

# Agency for Cultural Resource Management

Specialists in Archaeological Studies and Heritage Resource Management

PO Box 159 Riebeeck West 7306 Phone/Fax 022-461 2755  
E-mail: [acrm@wcaccess.co.za](mailto:acrm@wcaccess.co.za) Cellular: 082 321 0172

20 February, 2009

**Att:** Mr Izak Malherbe  
BKS (Pty) Ltd  
PO Box 112  
Bellville,  
7535

Dear Mr Malherbe,

## ARCHAEOLOGICAL ASSESSMENT OF PIPELINE ROUTE OPTIONS THROUGH KLAPMUTS WINELANDS DISTRICT WESTERN CAPE

The proposed project comprises a water pipeline alongside the R101 (Old Paarl Road) through the town of Klapmuts in the Western Cape (Figure 1). Two alternatives (namely KP1 and KP2) were assessed. KP1 is the preferred route. The length of the proposed pipeline is about 1.3 km. The working space requirements for the pipeline are about 30m.

A Notice of Intent to Develop (NID) checklist has been completed by the archaeologist, and submitted to Heritage Western Cape (Belcom) for comment.

### 2. Terms of reference

The Terms of Reference for the archaeological assessment were to:

- Identify and map any heritage resources in the proposed and proposed alternative pipeline;
- Determine the importance of heritage resources in the proposed and proposed alternative pipeline;
- Determine and assess the potential impacts of the proposed project on the heritage resources, and
- Recommend mitigation measures to minimise impacts associated with the proposed project

### 3. The study site

The town of Klapmuts is situated in the Winelands District of the Western Cape, about 15 kms north east of Stellenbosch, and about 13 kms south west of Paarl. Access to the town is via the R44. As indicated, the proposed pipeline (KP1) and proposed alternative pipeline (KP2) will be situated alongside the R101 (Figures 3-15).



KP1 will impact directly on Klapmuts Concrete and Dealcor 27 - a business which sells tractors and other equipment. Both these businesses occupy part of the road reserve of the R101, outside their property boundaries.

KP2 will impact on one private (modern) property, more or less opposite Klapmuts Concrete.

#### **4. Approach to the study**

Selected areas along the proposed two routes were searched for archaeological remains.

The site visit and assessment took place on 17<sup>th</sup> February, 2009.

#### **5. Findings**

No archaeological remains were found in the proposed pipeline route.

The receiving environment is in an already severely modified state.

#### **6. Impact statement**

The impact of the proposed project on important archaeological heritage remains is likely to be **low**.

#### **7. Recommendations**

The archaeological impact assessment of the proposed construction of the Klapmuts pipeline (KP1 and KP2) in Klapmuts has identified no significant impacts to pre-colonial archaeological material that will need to be mitigated, prior to proposed development activities.

Yours sincerely

A handwritten signature in black ink, appearing to be 'Jonathan Kaplan', written in a cursive style.

Jonathan Kaplan

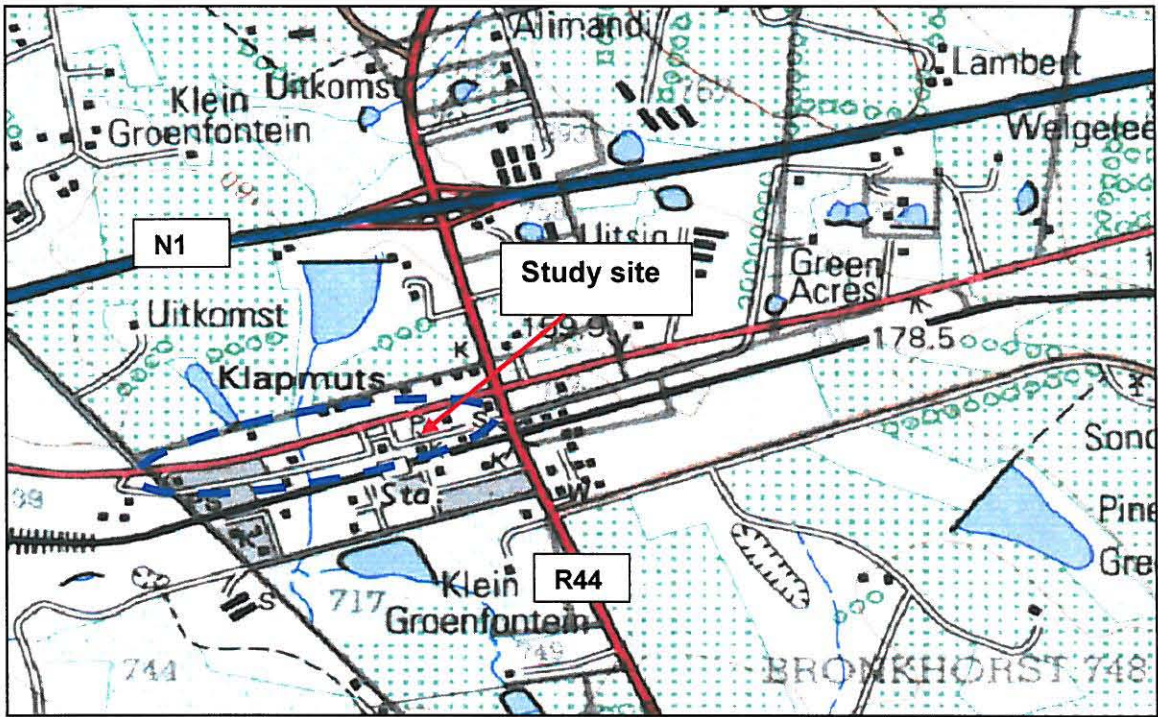


Figure 1. Locality Map (3318DD Stellenbosch)

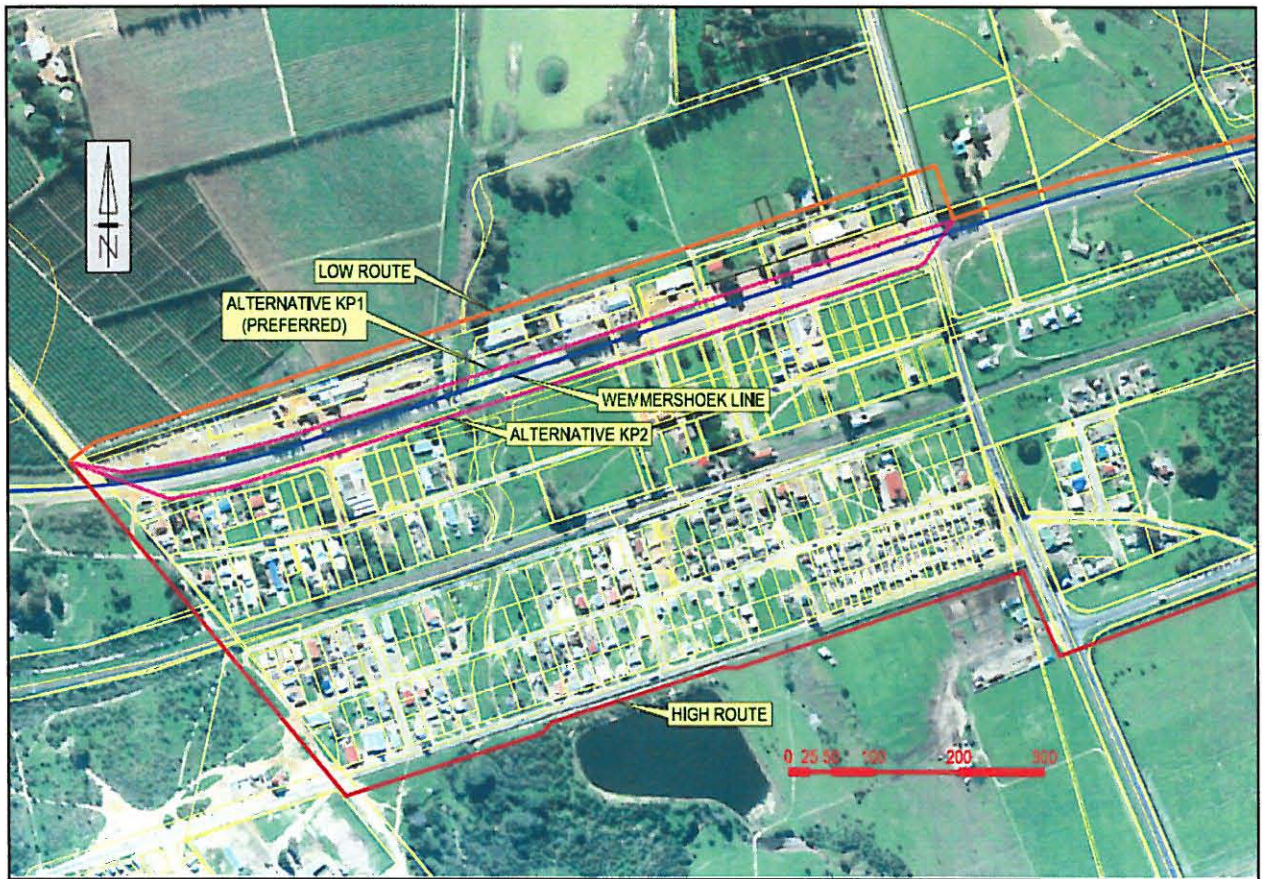


Figure 2. Aerial photograph indicating Alternative KP1 and Alternative KP2



**Fig. 3. KP1 view facing west**



**Fig. 7. KP1 view facing west**



**Fig. 4. KP1 view facing west**



**Fig. 8. KP1 view facing west**



**Fig. 5. KP1 view facing west**



**Fig. 9. KP2 view facing west**



**Fig. 6. KP1 view facing west**



**Fig. 10. KP2 view facing west**



**Fig. 11. KP2 view facing west**



**Fig. 14. KP2 view facing west**



**Fig. 12. KP2 view facing west**



**Fig. 15. KP2 view facing west**



**Fig. 13. KP2 view facing west**