

REPORT PREPARED FOR
SFP TOWNPLANNING (Pty) Ltd.
PRETORIA

MTN TOPO TRICOM CELLPHONE MAST
SCHOONPLAAS: PILGRIM'S REST

ADANSONIA HERITAGE CONSULTANTS
P.O. BOX 2189, THABAZIMBI, 0380

CONTENTS

EXECUTIVE SUMMARY	3
A. INTRODUCTION	4
B. AIMS OF REPORT	4
C. METHODOLOGY	4
D. LOCALITY	4
E. HISTORICAL BACKGROUND	4
F. SURVEY OF CULTURAL RESOURCES	5
G. SIGNIFICANCE OF CULTURAL RESOURCES IN STUDY AREA	5
H. CONCLUSION & RECOMMENDATIONS	6
I. SOURCES	8
J. APPENDIX 1: Cell Radio Installation Arial photo	9
K. APPENDIX 2: Cell Radio Installation Site plan	11
L. APPENDIX 3: Cell Radio Installation Elevation plan	13

EXECUTIVE SUMMARY

This study was done in the area known as Schoonplaas / New Town, Pilgrim's Rest. The area has been disturbed by landfill for the building of a soccer field, next to the Pilgrim's Primary School. The following heritage resources have been identified in the immediate vicinity:

- Historical features associated with mining technology dating from the last 100 years: Lattice steel power pylons;

The physical features found during the fieldwork, are supported by the research documents consulted in the Pilgrim's Rest Museum Archives.

Pilgrim's Rest Museum is currently in the process of working towards the declaration of the Central Reduction Works and associated features as a World Heritage site, and has already been placed on the tentative list. It is therefore imperative that none of the features are threatened by any proposed activity.

Activities planned in the study area may not negatively affect the survival of the heritage resources. The whole area is sensitive to development due to its cultural and historical value.

A. INTRODUCTION

Adansonia Heritage Consultants were appointed by SFP Townplanning (Pty) Ltd., to conduct a thorough study on heritage resources that might be affected in the area of development (Schoonplaas / Newtown, Pilgrim's Rest), for the inclusion into the heritage scoping assessment for the above mentioned project.

B. AIMS OF REPORT

The aim of this report is to source all relevant historic information and remains of cultural resources on the area as indicated by SFP Townplanning (Pty) Ltd., for the proposed MTN Topo Tricom cellphone mast. The area an indicated (Appendix 1 & 2), will not exceed 142m², and the container will be 7.2m² in extent.

The study area includes all features which fall within the demarcated area indicated by SFP Townplanning (Pty) Ltd., on topographical map 1:50 000, 2430 DD Graskop (Ponieskrantz 543 KT).

C. METHODOLOGY

The surface of the study area is smooth landfill next to a soccer field. On the perimeter of this area, are the heritage features, which will be discussed below. Visibility was excellent and no other features were identified in the direct vicinity.

The research was conducted by means of:

- Archival research, Pilgrim's Rest Museum Archives;
- A survey on foot of the entire study area;

Archival research:

Archival research was conducted in the Pilgrim's Rest Museum Archives.

Primary and secondary sources in the form of information files, reports and maps, were consulted.

Survey on foot:

The fieldwork was conducted on foot and visibility was excellent.

Personal information:

Discussions were held with the current Town Manager, Public Works, Mr. D. Chiloane.

D. LOCALITY

The study area includes all features which fall within or adjacent the demarcated area indicated by SFP Townplanning (Pty) Ltd., on topographical map 1:50 000, 2430 DD Graskop (Ponieskrantz 543 KT) (See Appendix 1).

E. HISTORICAL BACKGROUND

The village of Pilgrim's Rest had its origin in 1873, when gold was discovered in the area. Gold production was soon the primary source of income and when the diggers' era phased out, mining companies such as the Transvaal Gold Mining Estates, established itself.


The construction of the Central Reduction Works in 1896 demanded more electric power. Brown's Hill Power station was built in 1896. A second power station, Jubilee, was built north east of the present Schoonplaas / Newtown, drawing its water from the Blyde River. Remains of this are still visible. Pilgrim's Rest was the second town in South Africa to be lit by electricity.¹

In 1911, Belvedere hydro-electric Power Station was built in the Blyde River Canyon near the current Bourke's Luck. This power station was the largest hydro-electric scheme in the southern hemisphere. The power lines supplying electricity to Pilgrim's Rest were 30 km long and needed 317 **lattice steel towers/pylons**.² These are still visible next to the proposed development area, and are protected by the National Heritage Resources Act, no. 25 of 1999.³

With the closing of the mine in 1971,⁴ Pilgrim's Rest was developed as a heritage site. In 1986 the village was declared a National Monument.

Schoonplaas or New Town, is situated about 2km from the historic town. It consists of 252 two- and three-bedroomed houses.⁵ These houses were built in 1986/7 and are rented by the occupiers. The landowner of the entire farm is the Department of Public Works.

F. SURVEY OF CULTURAL RESOURCES IN THE STUDY AREA

<i>Heritage Feature in direct vicinity of planned development</i>	<i>Co-ordinates</i>	<i>Photograph</i>
Lattice power pylons	Elevation: 1220m S 24° 53' 27.7" E 30° 45' 18.7"	

G. SIGNIFICANCE OF CULTURAL RESOURCES IN STUDY AREA

All cultural heritage resources as specified in the Pilgrim's Rest Museum Archives are all of crucial value to the future planning of Pilgrim's Rest. The Central Reduction Works is currently on the tentative list for World Heritage status, and will hopefully be gazetted in 2008. Most of the features, for example the **lattice power pylons**, are associated features of the Central Reduction Works and therefore important to preserve without further damage to the integrity of the heritage site.

¹Pilgrim's Rest Museum Archives: 4/7/5/ Vol. 1(25), pp.3-4.

²*Ibid.*, pp.3-4.

³National Heritage Resources Act, No. 25 of 1999.

⁴Coston, A.P. *Die Ontwikkeling van Pilgrim's Rest as Museumdorp*. p. 15.

⁵Mpumalanga Provincial Government, *Pilgrim's Rest Status Quo Report*. p. 7.

Although there are several mining sites declared as World Heritage sites, there are no industrial sites that represent the reduction of gold. The Central Reduction Works at Pilgrim's Rest was the first gold related industrial plant in Africa. Pilgrim's Rest was not only the place of the first gold rush in Africa, but also established the critical role that gold plays as the basis for the entire economy of South Africa.



The lattice power pylons (above) are also indicated on the topographical map 2450 DD (GRASKOP) Ponieskrantz, 543 KT. Left of the tall tree at the top of the photo is the proposed development area.

The production of gold in Pilgrim's Rest initiated a major influx of foreigners and the establishment of an industrial economy in a remote area of South Africa. It opened the transport routes to Lorenzo Marques (current Maputo), stimulated the development of infrastructure such as the tram line, and was a world leader in the development of hydro-electricity.

The major importance is however that the Central Reduction Works are generally recognized as the most intact 19th century gold reduction plant together with its power source, Belvedere hydro-electric power station, in the world, and is as such of great value in the understanding of industrial processes of its period. Please note that the Reduction Works in Pilgrim's Rest and Belvedere at Bourke's Luck, are still connected by the visible **lattice power pylons**.

H. CONCLUSION AND RECOMMENDATION

Schoonplaas or Newtown, is situated two kilometers from the historic town of Pilgrim's, but cannot be seen in isolation. It forms an integral part of the history of Pilgrim's Rest, which is a valuable part of South Africa's National Estate.

Activities planned in the study area may not negatively affect the survival of the heritage resources. The whole area is sensitive to development due to its cultural and historical value, and for the future co-existence of the various stakeholders in the village of Pilgrim's Rest. The current Town Manager, Mr. David Chiloane is of the opinion that the proposed cellphone mast will add to essential services for the inhabitants and tourists alike.⁶

The area where the MTN mast is planned, is compromised with 252 modern buildings dated from 1986/7. A modern electric substation is *en-route*, next to the new cemetery. The mast will not be directly visible from the core of the village of Pilgrim's Rest.

⁶Personal Information: D. Chiloane, Pilgrim's Rest, 2008-02-21.

Recommendations:

It is recommended that the 30m Topo Tricom cellphone mast (see Appendix 1,2 & 3), may continue, under the following conditions:

- The existing **lattice power pylons** must be left undisturbed as part of the historic integrity of associated features of Pilgrim's Rest. As stated in the National Heritage Resources Act, no. 25 of 1999, the feature is defined as “material remains resulting from human activity which are in a state of disuse and are on land which is older than 100 years...”, and is therefore protected by national legislation.⁷
- Further an area of at least 10m must be kept undisturbed around the closest pylon.
- The mast should be painted in a dark green or dark brown colour to make it less conspicuous.
- Other legislation such as the National Environmental Management Act, 1998 (Act No. 107 of 1998) should be adhered to.

⁷ *National Heritage Resources Act, No. 25 of 1999.* p. 6.

I. SOURCES

ARCHIVAL SOURCES

1. UNPUBLISHED

Pilgrim's Rest Museum Archives

Information file 4/7/5 Belvedere Power Station. Vol 1 (25). Undated.

GOVERNMENT PUBLICATIONS

• National Legislation

Republic of South Africa, *National Heritage Resources Act*, (Act No. 25 of 1999).

• Mpumalanga Provincial Government

Pilgrim's Rest Status Quo Report, October 1997.

LITERATURE

COSTON, A.P., *Die Ontwikkeling van Pilgrim's Rest as Museumdorp*, Universiteit van Pretoria, 1995.

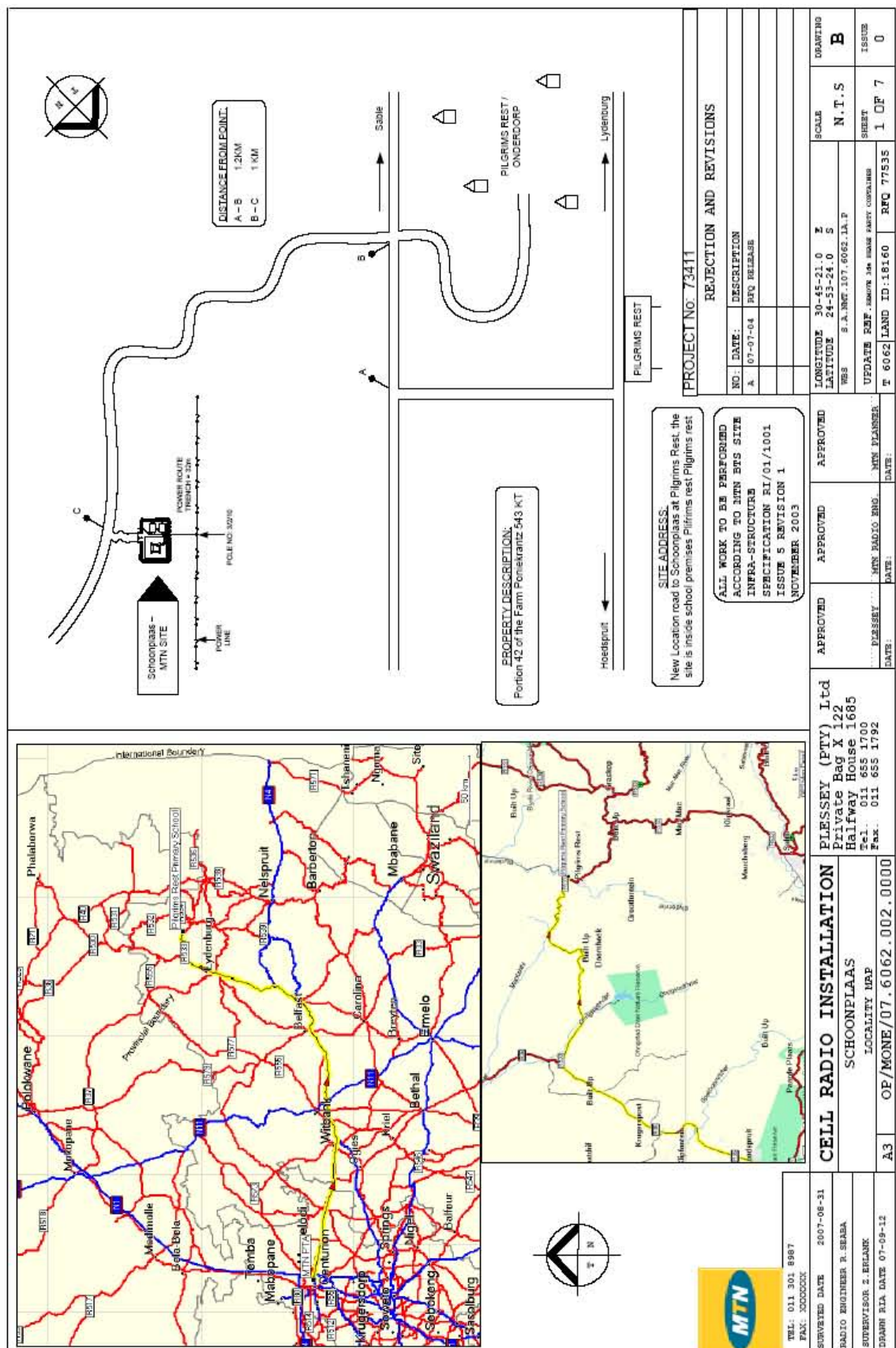
PERSONAL INFORMATION

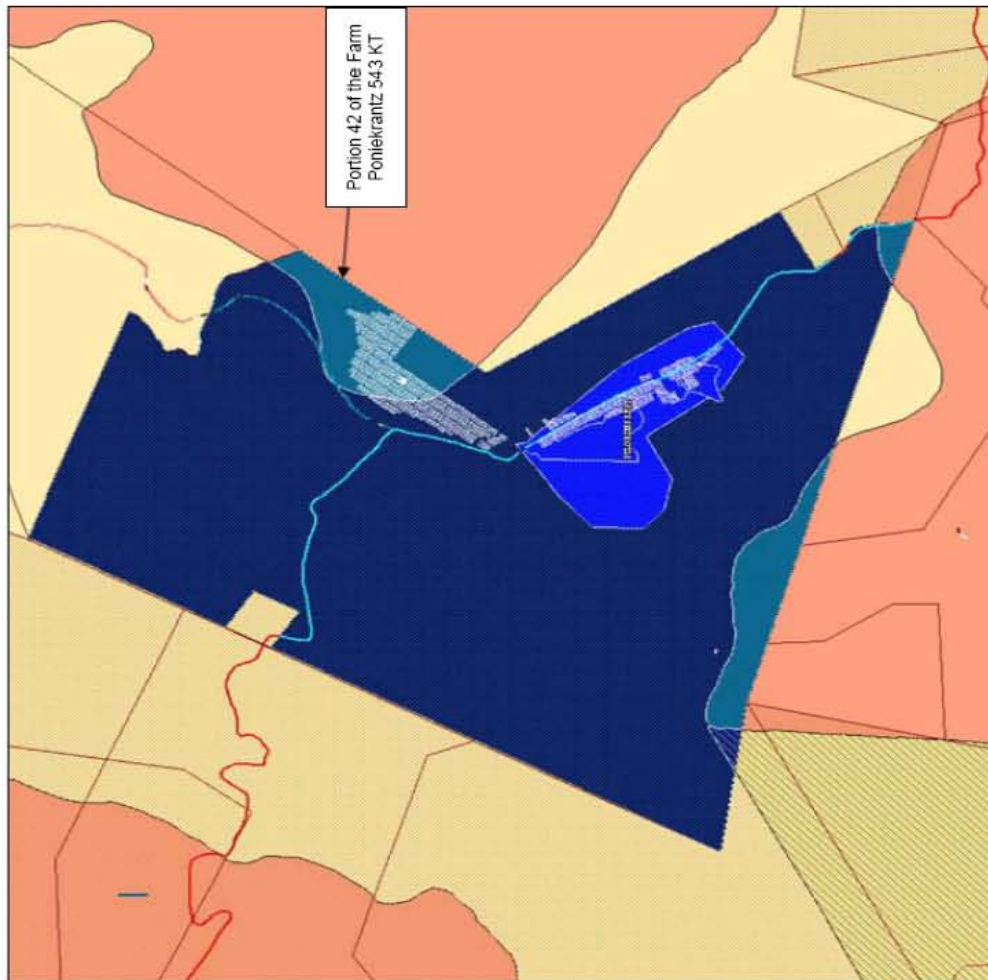
CHILOANE, Mr. D., Town Manager, Public Works, Main Street Reduction Works, Pilgrim's Rest. 2008-02-21.

J. APPENDIX 1: Cell Radio Installation Arial photo

K. APPENDIX 2: Cell Radio Installation Site plan

L. APPENDIX 3: Cell Radio Installation Elevation plan





Portion 42 of the Farm
Pontekrantz 543 KT

PROPERTY DESCRIPTION:
Portion 42 of the Farm Pontekrantz 543 KT

ALL WORK TO BE PERFORMED
ACCORDING TO MTN BVS SITE
INFRA-STRUCTURE
SPECIFICATION RI/01/1001
ISSUE 5 REVISION 1
NOVEMBER 2003

PROJECT NO: 73411

REJECTION AND REVISIONS

NO.	DATE:	DESCRIPTION
A	07-07-04	RFQ RELEASE

TEL: 011 301 8987

FAX: XXXXXXXX

SUBMITTED DATE 2007-08-31

RADIO ENGINEER B. SELBA

SUPERVISOR E. BELLAIR

DRAWN RIA DATE 07-08-12

CELL RADIO INSTALLATION

SCHOONPLAAS
AERIAL PHOTO

PLESSEY (PTY) Ltd
Private Bag X 122
Halfway House 1685
Tel. 011 655 1700
Fax. 011 655 1792

APPROVED	DATE
PLANNING	
RFQ RADIO ENG.	
RFQ PLANNING	

APPROVED	DATE
RFQ RADIO ENG.	
RFQ PLANNING	

LONGITUDE	30-45-21.0	E
LATITUDE	24-53-24.0	S
WGS	S.A. REF. 107.6062.1A.P	
UPDATE REF.	AMKOR 104.0000.0000	
T	6062	
LAND ID	18160	
RFQ	77535	

SCALE	N.T.S	DISCOUNT
		B
SHEET	2 OF 7 <th>ISSUE</th>	ISSUE
		0



ALL WORK TO BE PERFORMED
ACCORDING TO MTN BWS SITE
INFRA-STRUCTURE
SPECIFICATION RI/01/1001
ISSUE 5 REVISION 1
NOVEMBER 2003

PROPERTY DESCRIPTION:
Portion 42 of the Farm Ponekrantz 543 KT

APPROVED	APPROVED	APPROVED
DATE: _____ NAME: _____	DATE: _____ NAME: _____	DATE: _____ NAME: _____

CELL RADIO INSTALLATION

SCHOONPLAAS
ARIAL PHOTO2

A3 OP/MONE/07.6062.002.0000

PROJECT NO: 73411

REJECTION AND REVISIONS

NO.	DATE:	DESCRIPTION
A	07-07-04	RFQ RELEASE

LONGITUDE	30-45-21.0	E
LATITUDE	24-53-24.0	S
WGS	S.A.MET.107.6062.1A.P	
UPDATE REF.	REMOVE 104 FROM RAFT CHAINERS	
T	6062	LAND ID: 18160
RFQ	77535	

SCALE	N.T.S	DRAWING
SHEET	3 OF 7	ISSUE
0		0

TEL: 011 301 8987
FAX: XXXXXXX

SERVED DATE 2007-08-31

RADIO ENGINEER R. SEABA

SUPERVISOR Z. BLANK

ISSUE DATE 07-09-12

PLESSEY (PTY) Ltd
Private Bag X 122
Halfway House 1685
Tel: 011 655 1700
Fax: 011 655 1792



ALL WORK TO BE PERFORMED
ACCORDING TO MTN BTS SITE
INFRA-STRUCTURE
SPECIFICATION R1/01/1001
ISSUE 5 REVISION 1
NOVEMBER 2003

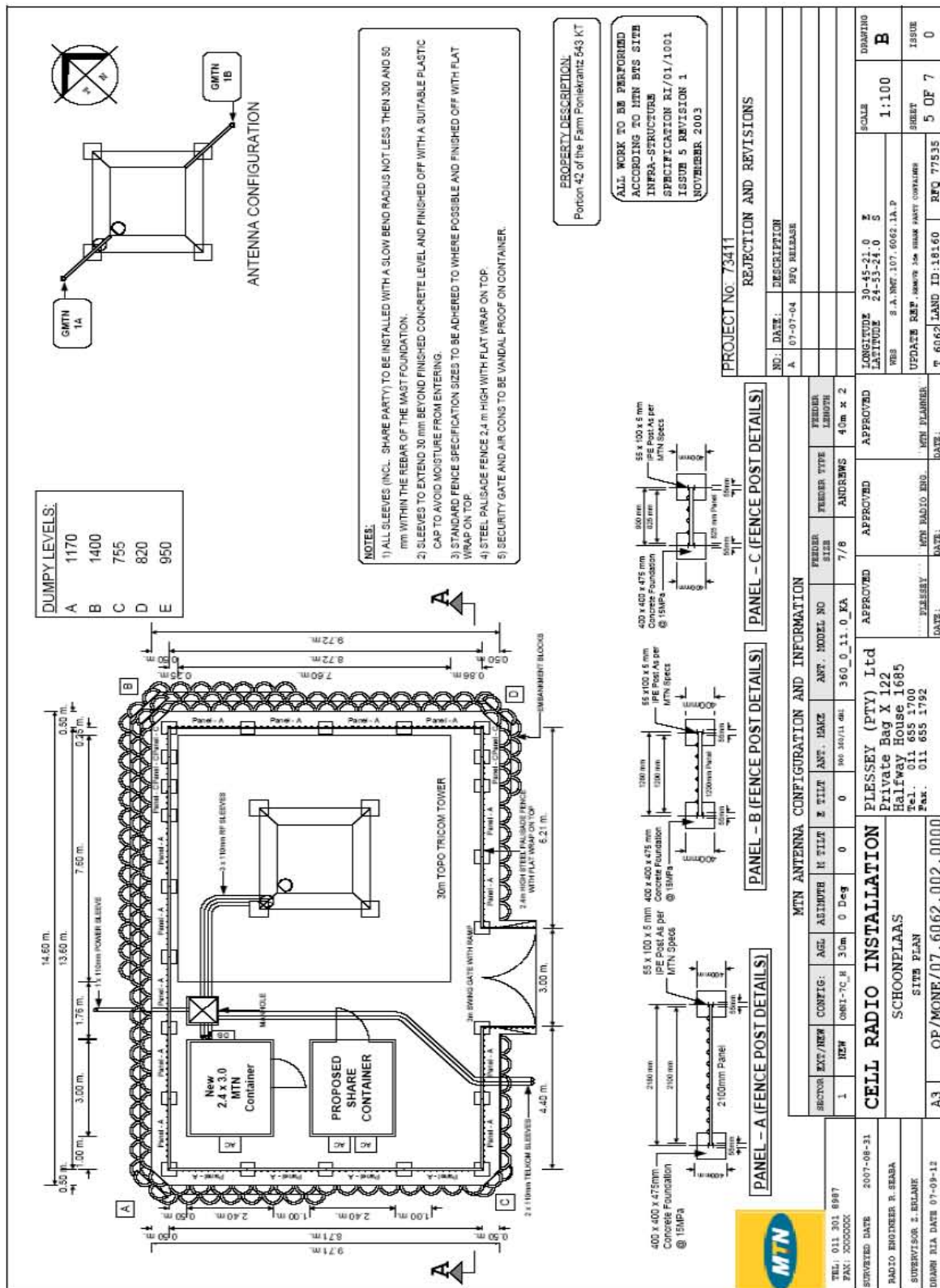
PROJECT No: 73411

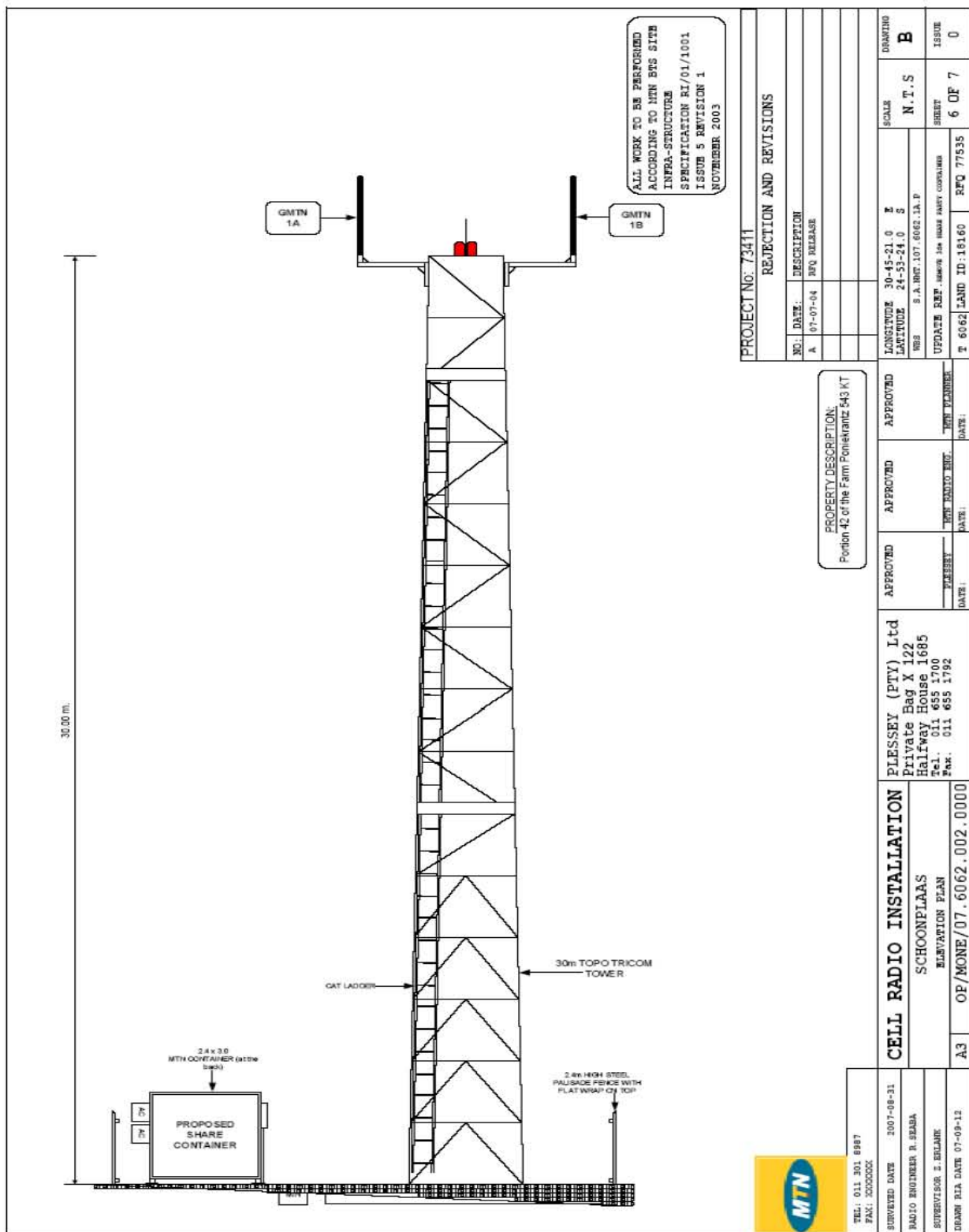
REJECTION AND REVISIONS

NO:	DATE:	DESCRIPTION
A	07-07-04	RFQ RELEASE

PROPERTY DESCRIPTION:
Portion 42 of the Farm Poniekranz 543 KT

<div> </div>	<div> TEL: 011 301 8987 FAX: XXXXXXXX </div>	<div> SERVED DATE 2007-08-31 RADIO ENGINEER R. SEABA SUPERVISOR S. EHLANK DRAWN BY DATE 07-09-12 </div>	<div> CELL RADIO INSTALLATION SCHOONPLAAS ARIAL PHOTO3 </div>	<div> PLESSEY (PTY) Ltd Private Bag X 122 Halfway House 1685 Tel. 011 655 1700 Fax. 011 655 1792 </div>	<div> APPROVED DATE: </div>	<div> APPROVED DATE: </div>	<div> APPROVED DATE: </div>	<div> APPROVED DATE: </div>	<div> LONGITUDE 30-45-21.0 LATITUDE 24-33-24.0 REF. S.A. REG. 107.6062.1A.P UPDATE 2007.09.04 T 6062 LAND ID:18160 RFQ 77535 </div>	<div> SCALE N.T.S SHEET 4 OF 7 ISSUE 0 </div>
	<div> A3 </div>	<div> OP/MONE/07.6062.002.0000 </div>	<div> CELL RADIO INSTALLATION SCHOONPLAAS ARIAL PHOTO3 </div>	<div> PLESSEY (PTY) Ltd Private Bag X 122 Halfway House 1685 Tel. 011 655 1700 Fax. 011 655 1792 </div>	<div> APPROVED DATE: </div>	<div> APPROVED DATE: </div>	<div> APPROVED DATE: </div>	<div> APPROVED DATE: </div>	<div> LONGITUDE 30-45-21.0 LATITUDE 24-33-24.0 REF. S.A. REG. 107.6062.1A.P UPDATE 2007.09.04 T 6062 LAND ID:18160 RFQ 77535 </div>	<div> SCALE N.T.S SHEET 4 OF 7 ISSUE 0 </div>







ALL WORK TO BE PERFORMED
ACCORDING TO MTN BTS SITE
INFRA-STRUCTURE
SPECIFICATION RI/01/1001
ISSUE 5 REVISION 1
NOVEMBER 2003

PROPERTY DESCRIPTION:
Portion 42 of the Farm Ponielantzi 543 KT

PROJECT NO: 73411

REJECTION AND REVISIONS

NO.	DATE	DESCRIPTION
A	07-07-04	RFQ RELEASE

LONGITUDE	30-45-21.0	E	SCALE	N.T.S	DRAWING
LATITUDE	24-53-24.0	S			
NBS	S.A. INT. 107.6062 I.A.P				
UPDATE REF.	ISSUE FOR HIRER PARTY CONFORMANCE				
T	6062	LAND ID: 18160	RFQ 77635	SHEET	7 OF 7
				ISSUE	0

APPROVED	APPROVED	APPROVED	APPROVED	APPROVED
DATE:	DATE:	DATE:	DATE:	DATE:

PLESSEY (PTY) Ltd
Private Bag X 122
Halfway House 1685
Tel. 011 655 1700
Fax. 011 655 1792

CELL RADIO INSTALLATION
SCHOONPLAAS
SITE PHOTO/ S
A3 OP/MONE/07.6062.002.0000

TEL: 011 301 6987	SUBMITTED DATE	2007-08-31
FAX: 011 301 6987	RADIO ENGINEER	B. BEABA
	SUPERVISOR	Z. EHLAK
	ISSUE DATE	07-09-12

