



COBUS DREYER

Pr. Archaeologist/Heritage Specialist

**P.O. Box 12910
BRANDHOF 9324
Bloemfontein
dreyerj@telkomsa.net**

**Tel: 051-444 1187
Fax: 051-444 4395
Cell: 083 357 7982**

6 OCTOBER 2011

FIRST PHASE ARCHAEOLOGICAL & HERITAGE INVESTIGATION OF THE PROPOSED CHICKEN EGG PRODUCTION DEVELOPEMENTS AT MOOIDOORNS 319, WELKOM, FREE STATE

EXECUTIVE SUMMARY

Chicken egg production developments are planned on the Remainder of the farm Mooidorings 319, in the Odendaalsrus district near Welkom, Free State.

The area is used as plough lands at present and contains no archaeological, cultural or historical material.

I recommend that the planning of the developments may continue.

INTRODUCTION AND DESCRIPTION

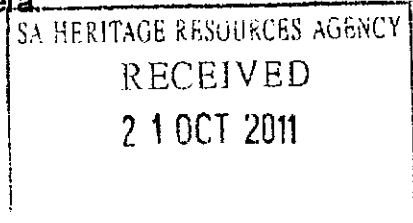
Scope and Limitations

The investigation provided an opportunity to examine the site proposed for chicken egg production developments. The land is used as plough lands for the production of maize. No limitations were experienced during site visit.

Methodology

Standard archaeological survey and recording methods were applied.

1. The site was inspected on foot.
2. Borders and features were plotted by handheld GPS and the surroundings were recorded on camera.



INVESTIGATION

The site proposed for chicken egg production at Mooidorings 319, Odendaalsrus, was visited on 3 October 2011. Hanlie Groenewald from H2ON Environmental Consultants, Bloemfontein, accompanied me to the site.

The study aims to locate and evaluate the significance of cultural heritage sites, archaeological material, manmade structures older than 60 years, and sites associated with oral histories and graves that might be affected by the proposed development.

The area was examined for possible archaeological and historical material and to establish the potential impact on any cultural material that might be found. The Heritage Impact Assessment (HIA) is done in terms of the National Heritage Resources Act (NHRA), (25 of 1999) and under the Environmental Conservation Act, (73 of 1989).

LOCALITY

The site for the proposed chicken egg production development lies adjacent to the R34 main road from Welkom to Kroonstad (Map 2) (Surveyor-General 1973). The farm Mooidorings 319 is in the district of Odendaalsrus. The area under application covers about 160ha.

The following GPS coordinates (Cape scale) were taken (2726BB).

A	27°52'52"S 026°48'19"E Altitude 1362m (Fig.).
B	27°53'10"S 026°48'39"E Altitude 1376m (Fig.).
C	27°53'08"S 026°48'11"E Altitude 1370m (Fig.).
D	27°52'53"S 026°47'58"E Altitude 1364m (Fig.8).

RESULTS

FINDS

No archaeological or cultural remains were found.

ASSESSMENT OF IMPACT

The area has already been disturbed by the farming activities for many years. The proposed developments will have no impact on any cultural or historical remains.

RECOMMENDATIONS

I recommend that the proposed developments at Mooidorings 319 near Welkom may proceed.

MITIGATION

No mitigation measures will be required at the site.

No obvious reasons could be found to delay the commencement of further planning and development of the site.

ACKNOWLEDGEMENTS

I thank Hanlie Groenewald from H2ON Environmental Consultants, Bloemfontein, for taking me to the site.

J. DREYER

SELECT BIBLIOGRAPHY:

DEACON, J. 1992. Archaeology for Planners, Developers and Local Authorities. Cape Town: National Monuments Council.

DREYER, J. 1996. Introduction to Free State Iron Age Archaeology. In: Guide to archaeological sites in the Free State and Lesotho. Southern African Association of Archaeologists (SA3), 14th Biennial Conference, Bloemfontein, Post-conference tour 5-8 July 1996. Bloemfontein: National Museum.

DREYER, J. 2000. Mountains and Rivers of the Free State - Manual for field research / Berge en Riviere van die Vrystaat – Handleiding vir veldnavorsing. Bloemfontein: University of the Free State, Department of Anthropology, Occasional Paper No. 2.

DREYER, J. 2004. First phase heritage / archaeological assessment of the proposed power line route at Phakisa Mine, Welkom. ESKOM, Bloemfontein.

DREYER, J. 2007. First phase archaeological and cultural heritage assessment of the proposed new MTN cell phone mast at Pumlanj Cemetery, Thabong, Welkom, Free State. Enviroworks Environmental Consultants, Bloemfontein.

DREYER, J. 2010. First phase archaeological and heritage assessment of the proposed installation of a 132KV inter-connecting power line at Thabong, Welkom, Free State. Enviroworks Environmental Consultants, Bloemfontein.

HUMPHREYS, A.J.B. 1986. Searching for the past. Cape Town: David Philip.

MAGGS, T.M. 1976. Iron Age Communities of the Southern Highveld. Pietermaritzburg: Natal Museum.

PISTORIUS, J.C.C. 1994. Eskom-Archaeological Site Identification Guide. Johannesburg: Eskom.

SURVEYOR-GENERAL O.F.S. 1973. Index of Orange Free State Farms. Bloemfontein.

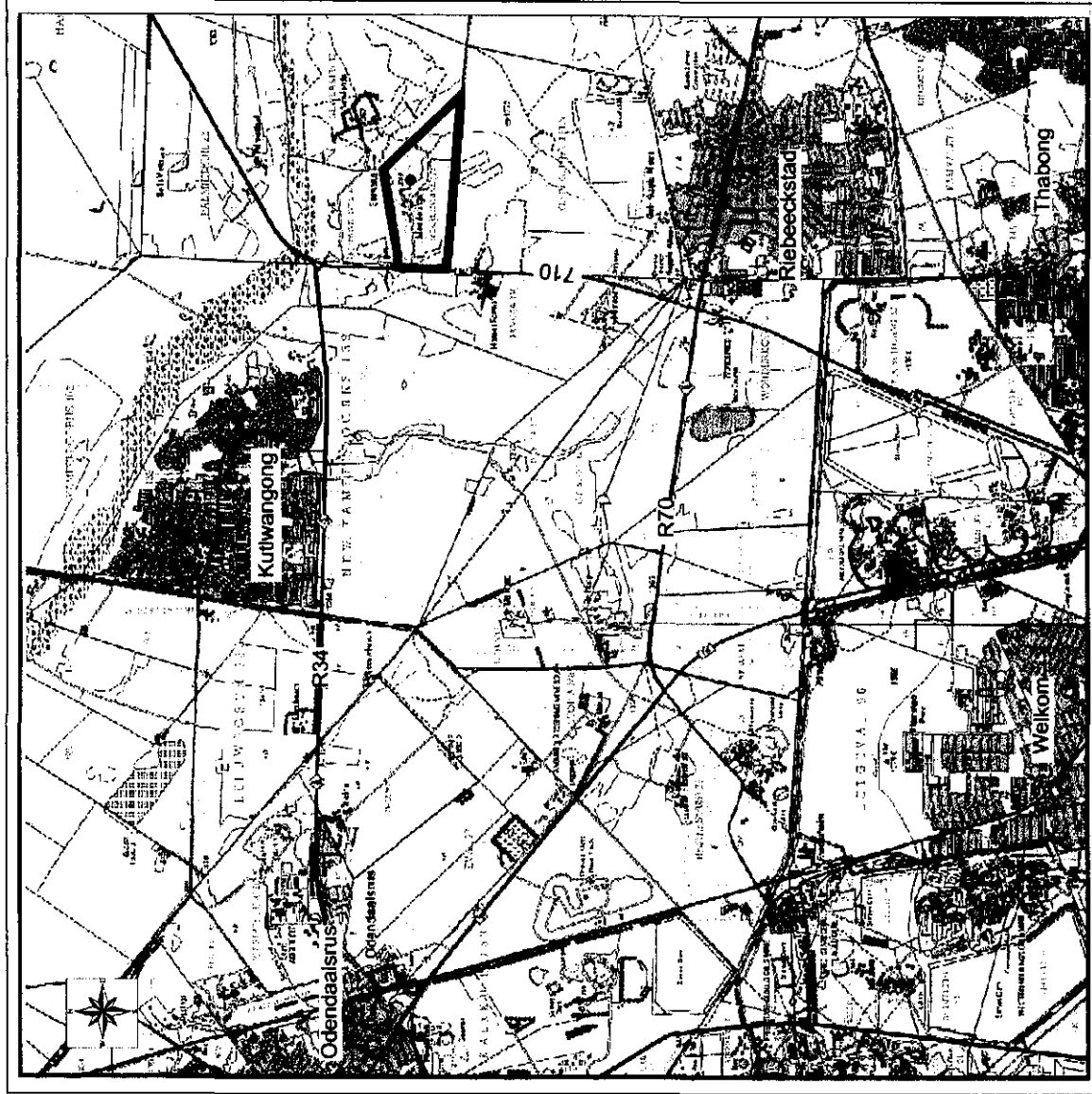
LIST OF ILLUSTRATIONS:



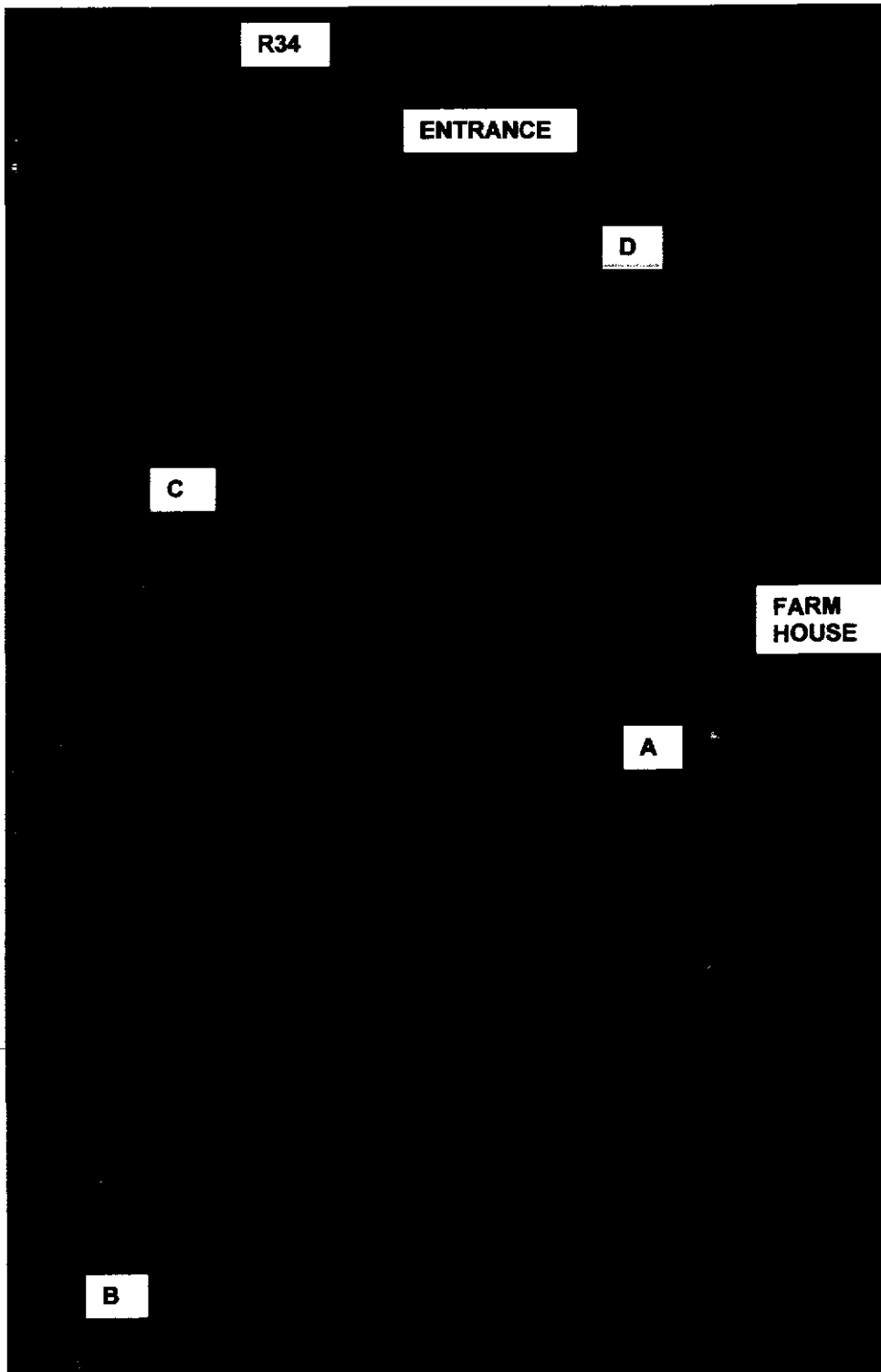
Map 1 Locality of Welkom in relation to Virginia, Odendaalsrus and Allanridge.



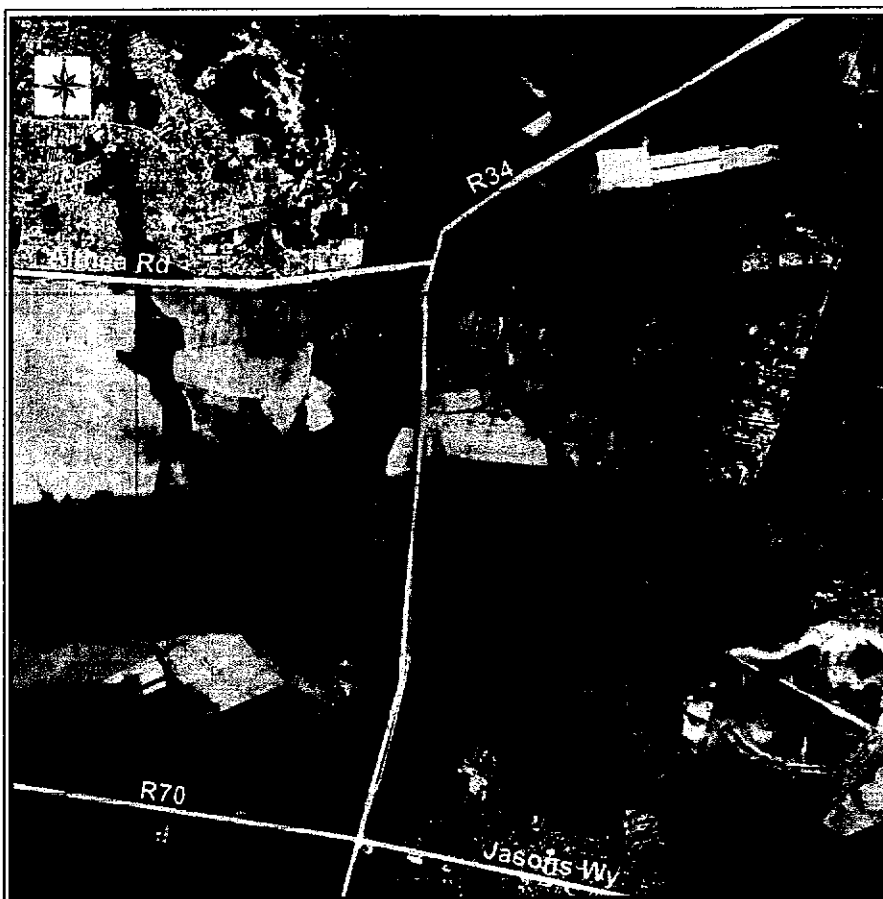
Fig.1 Point A near the farm house at Mooidorings 319 Welkom.



Map 2 Locality of Mooidooms 319 between Odendaalsrus and Welkom. (2726DD).



Map 3 The proposed development site at Mooidorings 319 Welkom (2726DD).
GPS Coordinate points are indicated.



Map 4 Google image of the locality of Mooidorings 319, Welkom.

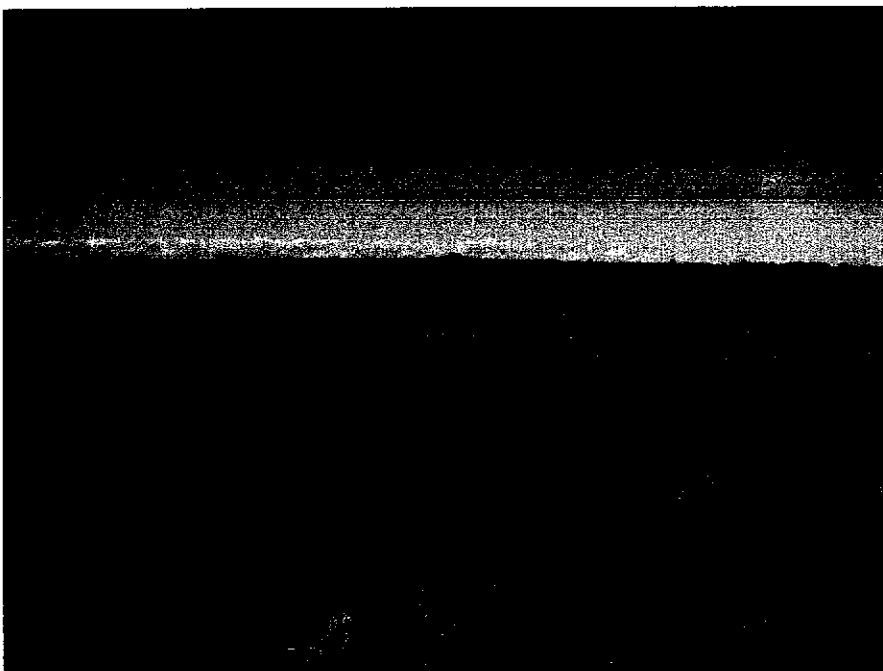


Fig.2 Point A near the farm house at Mooidorings 319 Welkom.

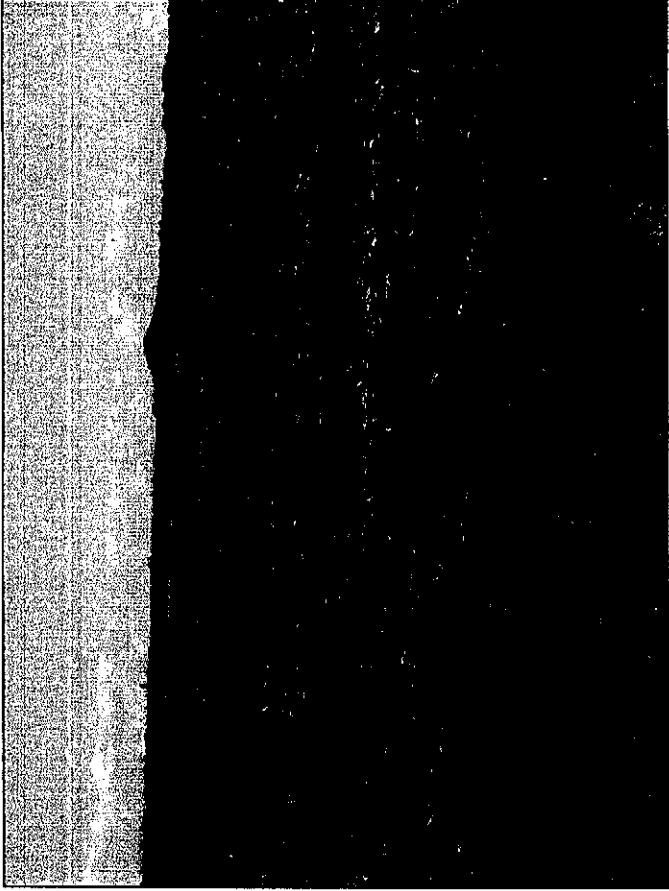


Fig.3 Point A near the farm house at Moidorings 319 Welkom.



Fig.4 Point B at Moidorings 319 Welkom.

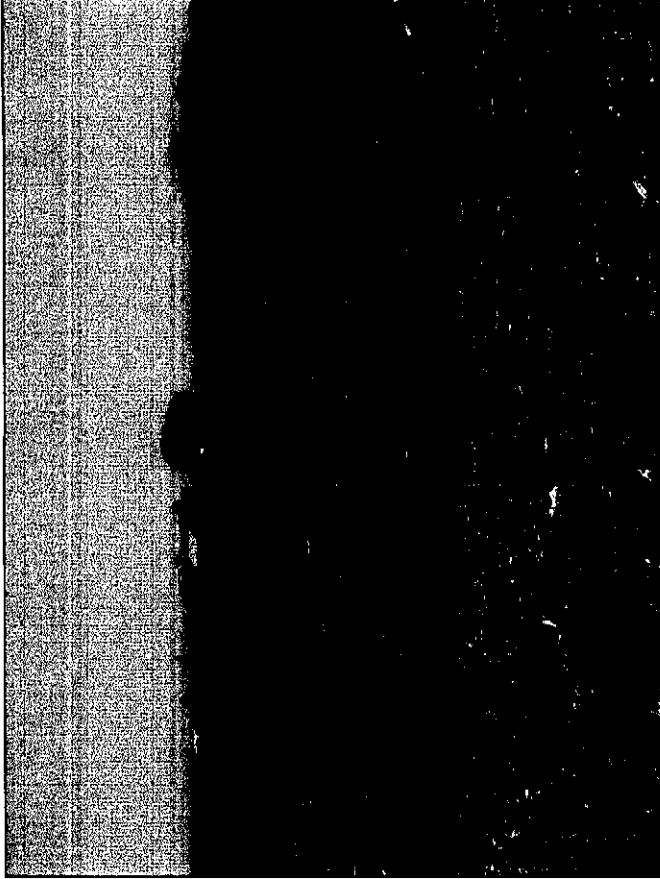


Fig.5 Point B at Moidorings 319 Welkom.



Fig.6 Point C at Moidorings 319 Welkom.



Fig.7 Point D at Mooidorings 319 Welkom.



Fig.8 Point D at Mooidorings 319 Welkom.