



COBUS DREYER

Pr. Archaeologist/Heritage Specialist

**P.O. Box 12910
BRANDHOF 9324
Bloemfontein
dreyerj@telkomsa.net**

**Tel: 051-444 1187
Fax: 051-444 4395
Cell: 083 357 7982**

24 AUGUST 2006

FIRST PHASE ARCHAEOLOGICAL AND CULTURAL HERITAGE ASSESSMENT OF THE PROPOSED BORROW PIT SITES ALONG THE N5 BETWEEN SENEKAL & WINBURG, FREE STATE

EXECUTIVE SUMMARY

Three possible borrow pit sites are proposed for excavation during the upgrading of the N5 main road between Senekal and Winburg, Free State.

BP 1 is located on the farm Kareebank 107, Senekal. The site contains an existing quarry, without any archaeological or cultural remains in the proposed area of development.

BP 2 is on the farm Gunst 1907, Winburg. There is an existing quarry with debris from previous road building operations. The site has a large dolerite outcrop and circular and rectangular stone-walled structures with a large associated ash heap, dating from a more recent era.

The proposed locality for BP3 is on the Winburg Town lands. There is a single stone structure on the hill, which could be the remains of a British look out post from the Anglo-Boer War (1899-1902).

I recommend that the proposed developments and planning on any of the sites may proceed, providing that the stone walled structures at BP2 and BP3 should be avoided.

INTRODUCTION AND DESCRIPTION

INVESTIGATION

Three possible sites for the removal of soil material for the upgrading of the N5 main road between Senekal and Winburg were visited on 17 August 2006. Dr

Johan du Preez of MDA Environmental Consultants accompanied me to the site, where Mr James van Jaarveld accompanied us.

The area was examined for possible archaeological and historical material and to establish the potential impact on any cultural material that might be found. The Heritage Impact Assessment (HIA) is done in terms of the National Heritage Resources Act (NHRA), (25 of 1999) and under the Environmental Conservation Act, (73 of 1989).

LOCALITY

BP 1 is located on the farm Kareebank 107, Senekal (Map 2) (Surveyor-General 1973). The site contains an existing quarry (Fig.1), with several test pits in the vicinity (Figs.2-3).

BP 2 is on the farm Gunst 1907, Winburg (Map 3) (Surveyor-General 1973). There is an existing borrow pit with debris from previous road building operations (Fig.4). The site has a large dolerite outcrop with an old stone quarry (Fig.5).

The proposed locality for **BP3** is on the Winburg Town lands (Map 4) (Surveyor-General 1973).

The following GPS coordinates (Cape scale) were taken:

BP1	28°19'25"S 027°38'41"E	Altitude 1450m (Fig.1).
BP2	28°19'19"S 027°38'32"E	Altitude 1463m (Fig.4).
BP3	28°19'24"S 027°38'30"E	Altitude 1464m (Fig.13).

RESULTS

BP 1 is located on the farm Kareebank 107, Senekal (Map 2) (Surveyor-General 1973). The site contains an existing quarry (Fig.1), with several test pits in the vicinity (Figs.2-3). No indication of any archaeological or historical material was found in the proposed development area.

BP 2 is on the farm Gunst 1907, Winburg (Map 3) (Surveyor-General 1973). There is an existing borrow pit with debris from previous road building operations (Fig.4). The site has a large dolerite outcrop with an old stone quarry (Fig.5). There are circular (Fig.6) and rectangular stone-walled structures (Fig.11) with a large associated ash heap (Fig.9), which have material from more recent times on the surface (Fig.10). An upper grinding stone (Fig.12) was found in

association with the stone-walls. The site also contains a cluster of about 21 graves (Fig.7). One specific grave is that of Isutshu Aprel Shedile *24/2/1920 †/9/1982 (Fig.8).

The proposed locality for **BP3** is on the Winburg Town lands (Map 4) (Surveyor-General 1973). There is a single stone structure on the hill (Fig.14), which could be the remains of a British look out post or block house from the Anglo-Boer War times (1899-1902).

IMPACT ASSESSMENT

The proposed opening of the borrow pits along the N5 main road from Senekal to Winburg will have an impact on the archaeological and cultural remains on sites 2 and 3.

RECOMMENDATIONS

In the case of site 1 there are no obvious reasons to delay the commencement of further planning and development of the site. In the case of site 2 and 3, however, I recommend that the areas where the stone structures occur should be avoided.

MITIGATION

Concerning the areas for the proposed developments, mitigation measures will be required in the cases of sites 2 and 3.

ACKNOWLEDGEMENTS

I thank Dr Johan du Preez from MDA Environmental Consultants, Bloemfontein, for taking me to the site.

SELECT BIBLIOGRAPHY:

DEACON, J. 1992. Archaeology for Planners, Developers and Local Authorities. Cape Town: National Monuments Council.

DREYER, J.J.B. 1992. The Iron Age Archaeology of Doornpoort, Winburg, Orange Free State. Navorsing van die Nasionale Museum, Bloemfontein, Vol.8(7):262-390.

DREYER, J. 1996. Introduction to Free State Iron Age Archaeology. In: Guide to archaeological sites in the Free State and Lesotho. Southern African Association of Archaeologists (SA3), 14th Biennial Conference, Bloemfontein, Post-conference tour 5-8 July 1996. Bloemfontein: National Museum.

DREYER, J. 2000. Mountains and Rivers of the Free State - Manual for field research / Berge en Riviere van die Vrystaat – Handleiding vir veldnavorsing. Bloemfontein: University of the Free State, Department of Anthropology, Occasional Paper No. 2.

HUMPHREYS, A.J.B. 1986. Searching for the past. Cape Town: David Philip.

MAGGS, T.M. 1976. Iron Age Communities of the Southern Highveld. Pietermaritzburg: Natal Museum.

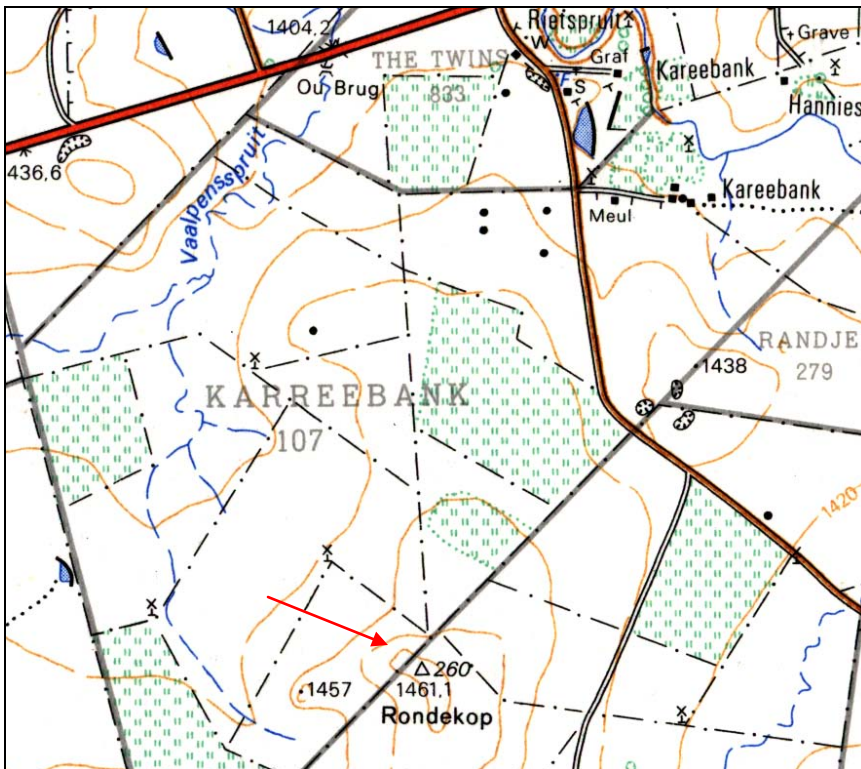
PISTORIUS, J.C.C. 1994. Eskom Archaeological Site Identification Guide. Johannesburg: Eskom.

SURVEYOR-GENERAL O.F.S. 1973. Index of Orange Free State Farms. Bloemfontein.

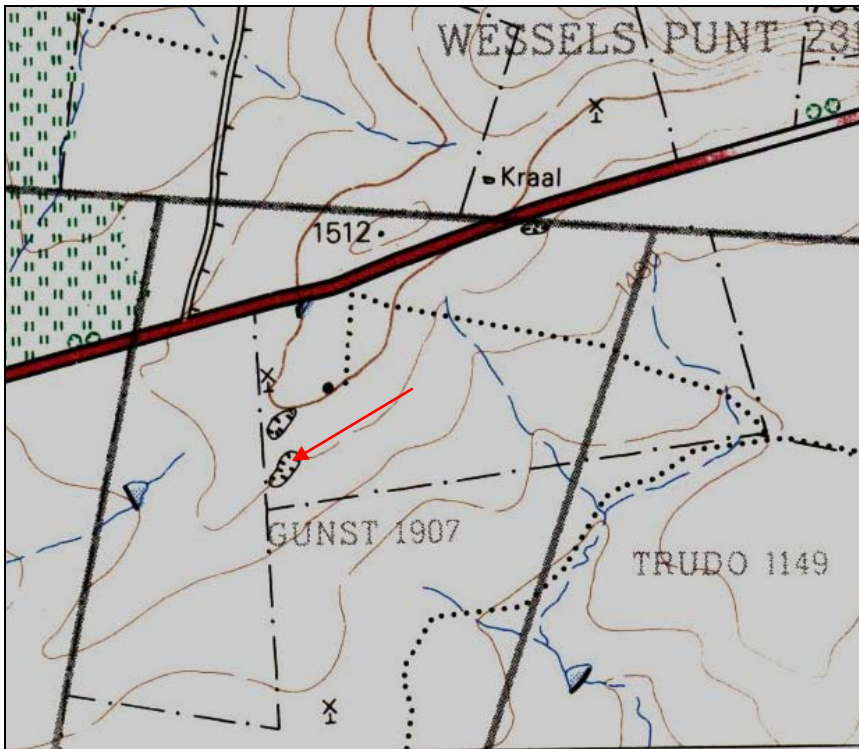
LIST OF ILLUSTRATIONS



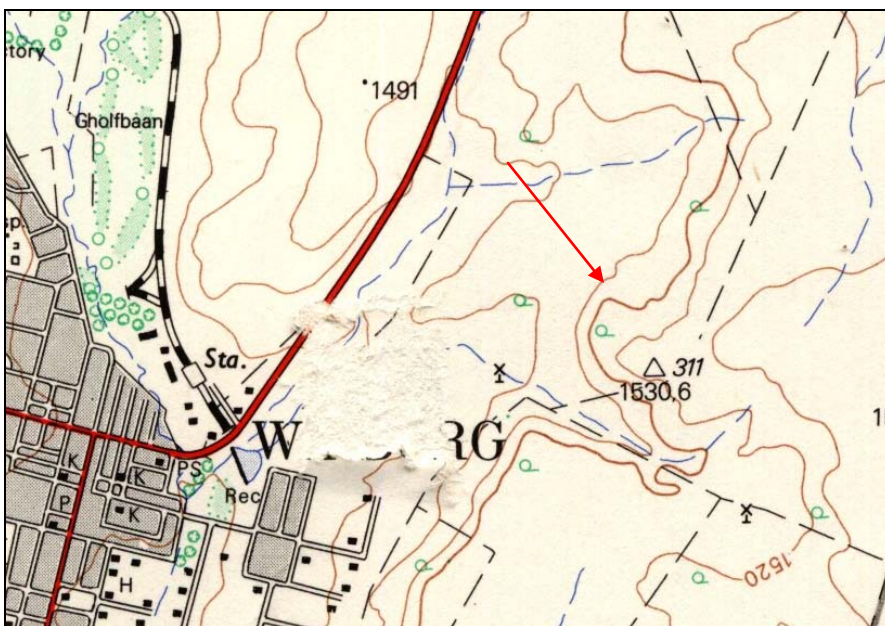
Map 1 Locality of the N5 main road between Senekal and Winburg.



Map 2 Locality of BP1 on the farm Kareebank 107, Senekal (2827AD).



Map 3 BP2 on the farm Gunst 1907, Winburg (2827AC).



Map 4 BP3 on the Winburg Townlands (2827CA).



Fig.1 BP1 Existing borrow pit on Kareebank 107, Senekal.



Fig.2 Test Pit 1 at Kareebank 107 (BP1).



Fig.3 Test Pit 2 at Kareebank 107 (BP1).



Fig.4 Existing borrow pit at Gunst 1907, Winburg.



Fig.5 Old Stone quarry at Gunst 1907, Winburg.



Fig.6 Circular stone-walled structure at Gunst 107, Winburg.



Fig.7 A cluster of about 21 graves at Gunst 1907, Winburg.



Fig.8 Grave of Isutshu Aprel Shedile *24/2/1920 †4/9/1982 at Gunst 1907, Winburg.



Fig.9 Large ash heap at Gunst 1907, Winburg.



Fig.10 Metal object on the ash heap at the farm Gunst 1907, Winburg



Fig.11 Rectangular labourer's houses at Gunst 1907, Winburg.



Fig.12 Upper grinding stone from the houses at Gunst 1907, Winburg.



Fig.13 General view of the proposed site at Winburg Townlands.



Fig.14 A stone structure on the Winburg Town lands site