



COBUS DREYER

Pr. Archaeologist/Heritage Specialist

**P.O. Box 12910
Brandhof
9324
dreyerj@telkomsa.net**

**Tel: 051-444 1187
Fax: 051-444 4395
Cell: 083 357 7982**

5 JULY 2007

**FIRST PHASE ARCHAEOLOGICAL AND CULTURAL HERITAGE
ASSESSMENT OF THE PROPOSED NEW PRISON AT PARYS,
FREE STATE**

EXECUTIVE SUMMARY

A new prison is planned at Parys, Free State.

The area proposed for development consists of a vegetable garden and grazing land.

No graves or other historical or cultural remains could be found at the site.

I recommend that the planning and development of the new prison may proceed.

INTRODUCTION AND DESCRIPTION

INVESTIGATION

A new prison is planned at Parys. The site was visited on 26 June 2007. The area was investigated on foot, GPS coordinates were taken on the peripheral points, and the features were recorded on camera.

The area was examined for possible archaeological and historical material and to establish the potential impact on any cultural material that might be found. The Heritage Impact Assessment (HIA) is done in terms of the National Heritage Resources Act (NHRA), (25 of 1999) and under the Environmental Conservation Act, (73 of 1989).

LOCALITY

The proposed new prison at Parys is planned behind the existing old prison on land used as a vegetable garden and a portion of the grazing fields. (Map 2) (Map 1). (Figs.12&13).

The numbering of points A - H is my own allocation.

The following GPS coordinates (Cape scale) were taken ():

A (Entrance)	30°46'57"S 027°59'27"E Altitude 1850m (Figs.1&2).
B (Midway)	30°46'52"S 027°59'23"E Altitude 1838m (Figs.3&4).
C (Flood line)	30°46'46"S 027°59'20"E Altitude 1830m (Figs.5&6).
D (East)	30°46'57"S 027°59'32"E Altitude 1850m (Figs.7-9).
E (South west)	30°47'05"S 027°59'18"E Altitude 1839m (Figs.10&11).

INVESTIGATION

The farm Kin Mel 109 (Lovedale) near Rhodes in the district of Barkly East, Eastern Cape, was visited on 20 June 2007. Mr Jambert Rheeders, the owner, accompanied us to the site at the farm.

The land along the road and above the river was investigated on foot and the outer limits of the planned development were plotted by GPS and recorded on camera.

The area was examined for possible archaeological and historical material and to establish the potential impact on any cultural material that might be found. The Heritage Impact Assessment (HIA) is done in terms of the National Heritage Resources Act (NHRA), (25 of 1999) and under the Environmental Conservation Act, (73 of 1989).

RESULTS

The investigation at Kin Mel 109 (Lovedale) near Rhodes, did not produce any archaeological material.

No graves or any other cultural or historical remains occurred on the surface.

IMPACT ASSESSMENT

The development of a residential area above the Bell River on the farm Kin Mel 109 (Lovedale) near Rhodes will have no impact on any cultural, archaeological or historical remains.

RECOMMENDATIONS

There are no obvious reasons to delay the commencement of further planning and development of the residential developments and I recommend that the work may proceed.

MITIGATION

Concerning the areas for the proposed extensions, no mitigation measures will be required.

ACKNOWLEDGEMENTS

I thank Erika van der Westhuizen from Spatial Solutions Incorporated Environmental Consultants, Bloemfontein, for taking me to Rhodes and Jambert Rheeders who showed us the site.

SELECT BIBLIOGRAPHY:

DEACON, J. 1992. Archaeology for Planners, Developers and Local Authorities. Cape Town: National Monuments Council.

HUMPHREYS, A.J.B. 1986. Searching for the past. Cape Town: David Philip.

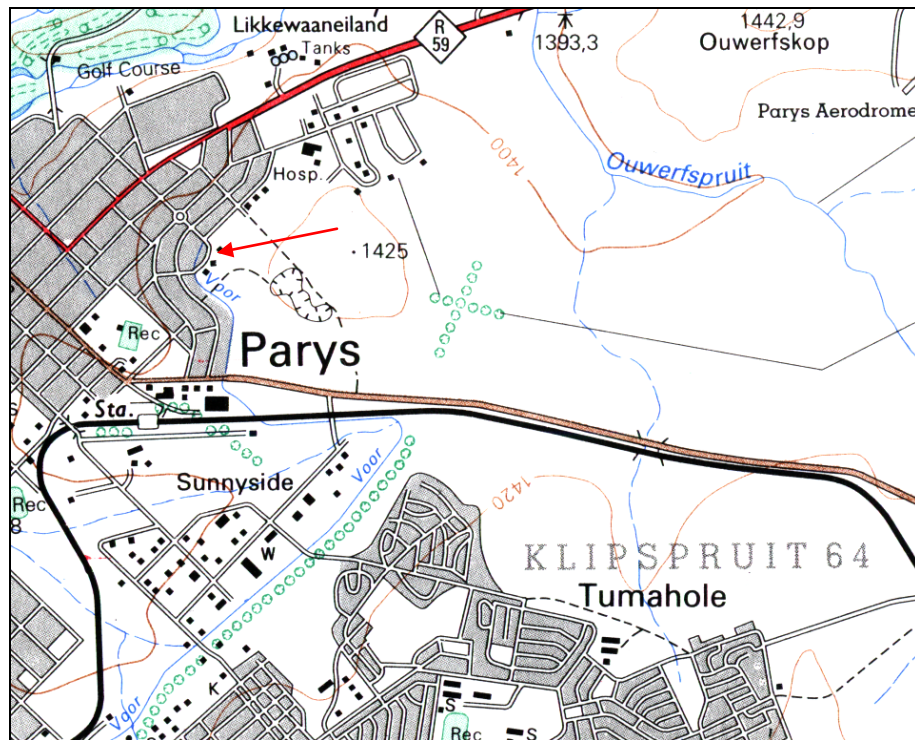
MAGGS, T.M. 1976. Iron Age Communities of the Southern Highveld. Pietermaritzburg: Natal Museum.

PISTORIUS, J.C.C. 1994. Eskom Archaeological Site Identification Guide. Johannesburg: Eskom.

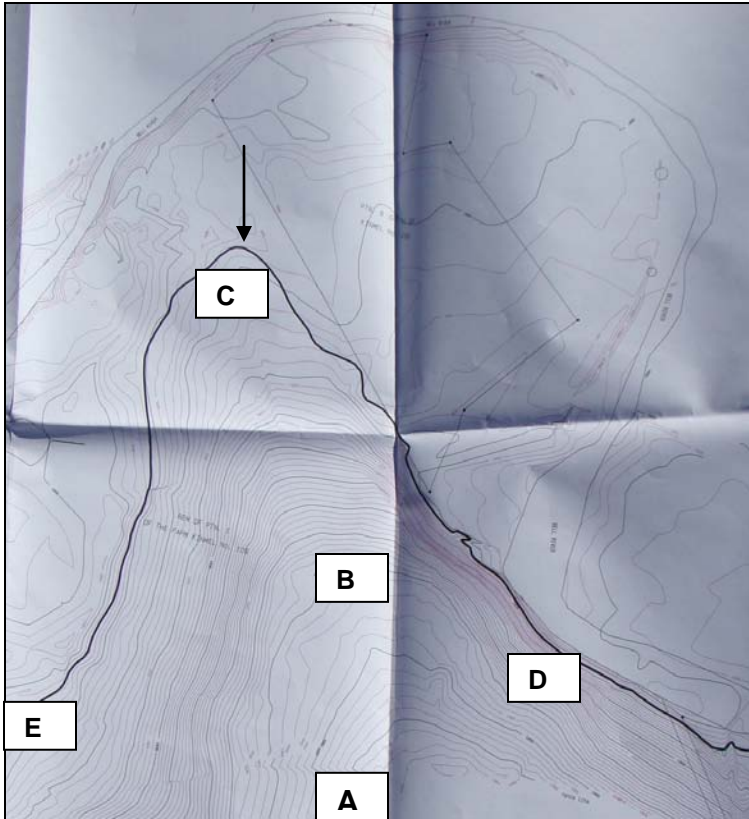
LIST OF ILLUSTRATIONS



Map 1 Locality of Parys in relation to other towns in the Vaal Triangle.



Map 2 Locality of the proposed new prison development at Parys.



Map 3 Placing of the proposed residential development at Kin Mell 109, Barkly East. Arrow indicates the 100 years flood line.

Fig.1 View from point A facing down across the proposed land towards the river.

Fig.2 View from Point A facing south.

Fig.3 A view along the high ground above the flood level.

Fig.4 View from Point B facing down slope towards the river beyond the trees.

Fig.5 Point C on the flood level.

Fig.6 View from Point C on the flood level.

Fig.7 Point D along the road facing south

Fig.8 View from Point D facing east.

Fig.9 View along the road from Point D facing east.

Fig.10 View from Point E facing north.

Fig.11 Point E facing downwards along the border fence.

Fig.12 View along the slope facing south.

Fig.13 View of the slope facing east.