

## Archaeological Impact Assessment

### **Title: Project JS Rabe Free Ranching Chicken Farm**

Proposal to develop 12 free-range chicken broiler houses with an estimated area of 7 ha inclusive of access roads and infrastructure on Colenso Farm No. 549 and portion of Kochra Farm No. 461, 5 km north of Darling, Malmesbury Magisterial District, Western Cape.

### **Author of this report:**

Prof H.J. Deacon Archaeologist, 49 Van Riebeeck Street, Stellenbosch 7600.

Tel/Fax 021 887 1540, Cell 082 682 7300, Email: [hjdeacon@iafrica.co.za](mailto:hjdeacon@iafrica.co.za)

### **Commissioned by Environmental Impact Assessor**

Mr N Hanekom, PO Box 70, Darling 7345. Tel: 022 492 3435, Fax: 022 492 3435, Cell: 076 963 6450. Email: [nhanekom@cles.co.za](mailto:nhanekom@cles.co.za)

### **Project Consultant**

Cape Lowlands Environmental Services. Contact person: Mr M Duckitt, PO Box 70, Darling 7345. Tel: 022 492 3435, Fax: 022 492 3435, Cell: 076 851 0476. Email:

[mduckitt@cles.co.za](mailto:mduckitt@cles.co.za)

### **Landowner**

Stephen Rabe Trust, Contact person: Mr S Rabe, PO Box 51, Darling 7345. Tel: 022 492 2842, Fax: 022 492 2842, Cell: 082 455 2054, Email: [jsrabe@megaserve.net](mailto:jsrabe@megaserve.net)

### **Municipal Jurisdiction**

Swartland 'B' and West Coast District 'C' Municipality. Contact person: Mr Alwyn Zaayman, PB X52, Malmesbury 7299. Tel: 022 487 9400, Fax: 022 487 9440, Email: [SwartlandMun@swartland.org.za](mailto:SwartlandMun@swartland.org.za)

**July 29, 2009**



**Fig.1. The Farm Colenso is north east of Darling and the planned development is immediately south of the Nooitgedacht farmhouse, 5 km north of Darling**

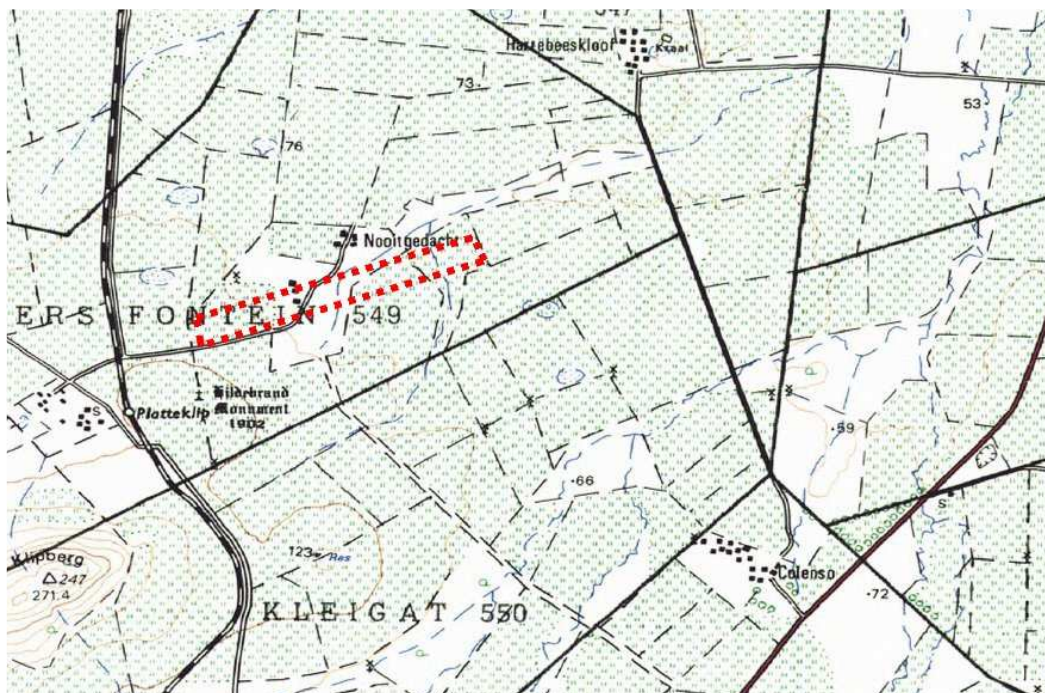
## Executive Summary

The proposed development will comprise the erection of sets of four chicken broiler houses on three separate sites with a total footprint inclusive of access roads and infrastructure of less than 7 ha. The setting is agricultural land. There are no structures. The survey revealed no palaeontological or archaeological remains. The Hildebrand Monument, Anglo-Boer War grave, is on an adjacent property. The recommendation is made that the visual impact of the development be screened by vegetation.

## Background Information

The proposal is to erect three sets of four chicken broiler houses, each 120 m by 15 m, on three separate sites, and using the existing farm roads (Fig.2). A possible alternative fourth was identified (No. 2 in Fig. 3) but deemed too close reasons of disease control. The total footprint of all associated infrastructure will be less than 7 ha.

This report is part of a Basic Assessment. Rezoning is not required



**Figure 2. Location of survey area immediately south of the Nootgedacht farmhouse, on 1:50 000 sheet 3318 AD.**

**Polygon of surveyed area:**

**NW: 33.314454 S; 18.378247 E.**

**SE: 33.313225 S; 18.395378 E.**

**NE: 33.311400 S; 18.394615 E.**

**SW: 33.318423 S; 18.376842 E.**



**Figure 3. Aerial view of the three proposed sites for broiler houses on agricultural land. The proximity to the Nootgedacht Farmhouse and the Hildebrand Monument is shown.**

### **Archaeological and Palaeontological Background**

There are no known major archaeological or palaeontological sites in the vicinity.

### **Description of the property**

The property and surrounds, designated as Agriculture 1, are ploughed farmland. There are no structures

### **Methodology**

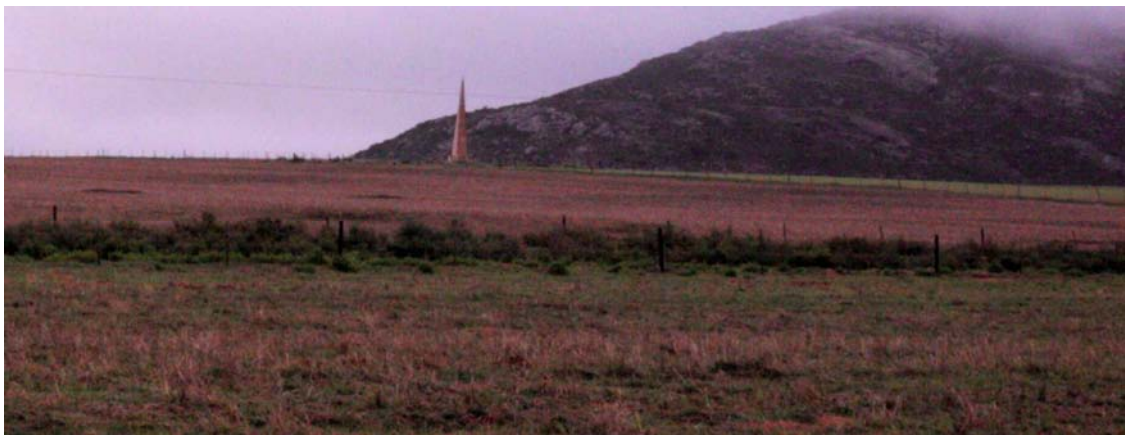
The area was traversed and surface disturbances were examined for archaeological and palaeontological materials.

### **Observations and Results**

No archaeological or palaeontological materials were observed on the property.

The Hildebrand Monument, which relates to the Anglo-Boer War 1899-1902, is on an adjacent property. It marks the grave of CP Hildebrand of Lichenburg, who as Field-cornet in the Commando of Maritz was killed in action on 12 November 1901. He was buried on the spot by the farm owner and months later the body was disinterred, placed in a coffin and reburied there. Later a marble headstone was erected. In 1939 the cornerstone of the present monument, a tall spire was laid. It is under the care of the

Dutch Reformed Church of Darling (<http://www.route27sa.com/hildebrand.html>). It is on private ground and locked gates limit access. The monument is not listed on the Heritage Western Cape register of Provincial Heritage Sites but in terms of the National Heritage Resources Act, No. 25, 1999, such public monuments and memorials must, without the need to publish a notice to this effect, be protected in the same manner as places which are entered in the heritage register. The monument is in an elevated position some 300 m from the nearest point of the proposed development and it is a similar distance from a public road and railway line to the west. The development will not directly impact on the monument but it will be visible from the monument. Mitigation of any visual impact of the development could be achieved by screening with vegetation.



**Figure 4. Hildebrand Monument as seen from site 1, Klipberg in the background**

### **Sources of Risk and Statement of Significance**

The risks are considered low.

The significance is rated as low.

### **Recommended Mitigations**

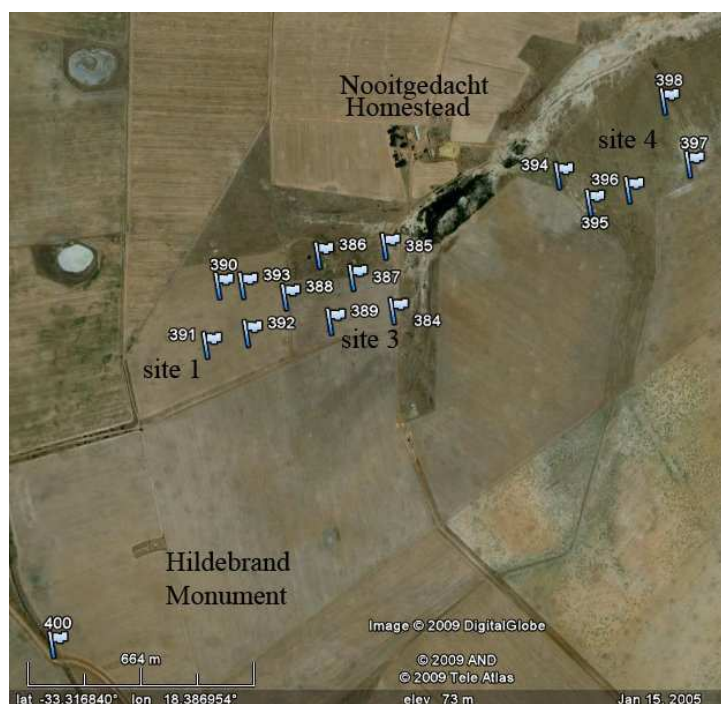
It is recommended that provision be made for screening the development on site 1 from the Hildebrand Monument with a line of vegetation.

It is recommended that should any excavations by chance uncover buried palaeontological or archaeological materials including human remains that Heritage Western Cape is notified (Mr N Wiltshire, Heritage Resource Management Services, HWC, Private Bag X9067, Cape Town 8000, Tel:021 483 9743, Fax:021 483 9842, [nwiltshire@pgwc.gov.za](mailto:nwiltshire@pgwc.gov.za)).



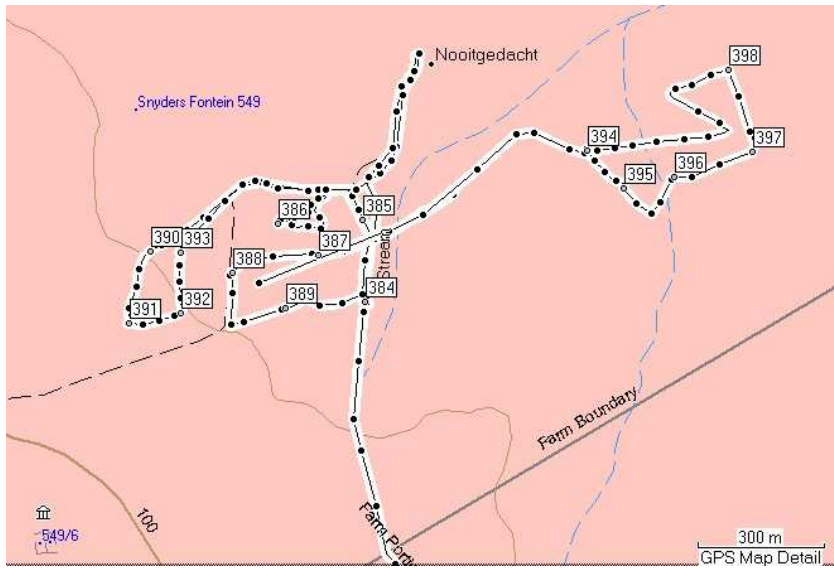


**Figure 5. Drainage ditch, site 4 WP 396, showing the depth of soil, bedrock not exposed.**



**Figure 5. Co-ordinates of selected waypoints**

**Sites 1&3. WP 384: 33.31676 S; 18.38507 E. WP 391: 33.31722 S; 18.37904 E.  
 WP 390: 33.31568 S; 18.37958 E. WP 385: 33.31403; 18.38520 E.  
 Site 4. WP 394: 33.31354 S; 18.39075 E. WP 395: 33.31435 S; 18.39167 E.  
 WP 396: 33.31410 S; 18.39295 E. WP 397: 33.31356 S; 18.39496 E.  
 WP 398: 33.31181 S; 18.39435 E.**



**Figure 6. Path of survey**