

**PHASE 1 HERITAGE IMPACT ASSESSMENT REPORT ON A
PLANNED EXTENSION OF THE ROSEDALE SETTLEMENT IN
UPINGTON, //KHARA HAIS MUNICIPALITY, NORTHERN CAPE
PROVINCE.**

Peter B Beaumont

c/o Archaeology Department
McGregor Museum
PO Box 316
8300 Kimberley
Tel 053 - 842 0986 or 053 - 839 2700
Fax 053 - 842 1433
e-mail se@museumsmnc.co.za

CONSULTANT

Ms Irmé van Zyl

Van Zyl Environmental Consultants

PO Box 567
8800 Upington
Tel 054 – 338 0722 or 072 222 6194
Fax 054 – 338 0722
e-mail ibvanzyl@telkomsa.net

24 August 2006

EXECUTIVE SUMMARY

The purpose of this study was to establish if any heritage sites were present in a planned extension of the Rosedal township in Upington, //Kharra Hais Municipality, Northern Cape (Figs 1 & 2). This ca. 10 ha property consisted of slightly sloping flat ground drained by a small shallow gully running to the south – east, on which Precambrian schist bedrock is overlain by schist and calcrete rubble in red sand matrix 0 – 60 cm deep. On it I found two quartzite artefacts that may be of ESA age, but nowhere were any sites, fossil bones or graves of any age. It is consequently considered that this ground has no significant heritage potential and that its development will have no impact on the archaeological resources of the Northern Cape.

BACKGROUND INFORMATION

Upington is a thriving city with a burgeoning population and a consequently huge demand for housing there. This study was requested by Irmé van Zyl of Van Zyl Environmental Consultants, acting in conjunction with Stabilis Development Planners based in Upington.

LOCAL ARCHAEOLOGY

Rather few sites are known in the near vicinity of Upington, with one of these being the recently - located Victoria West occurrence on the farm Droogehout 422, about 30 km WNW of it, on the N 10 to Nakop.

PROPERTY DESCRIPTION

This ca. 10 ha area, a portion of Erven 1, lies immediately south of a railway line and is at the northern end of the Rosedale township, some 4 km north – west of the Upington town centre (Figs 1 & 2). It comprises a slightly sloping flat piece of ground that is heavily overgrazed and transected by a shallow gully running south – eastwards. I spent about 45 minutes walking over its full extent, with eastern midpoint co-ordinates of 28° 26' 48" S, 21° 12' 26" E, and an elevation there of 824 m, on Wednesday 2 August 2006.

SUPERFICIAL GEOLOGY

The sediment sequence was seen to be bedrock of Precambrian schist on the surface or covered by schist and calcrete rubble in a gritty red sand matrix that is over 60 cm deep in places.

HERITAGE FINDINGS

Two fresh quartzite artefacts, a discoidal core and an irregular flake (Fig 3), were recovered during my foot survey, but there were certainly no sites, palaeontological bones or graves of any age.

CONCLUSIONS

The investigated terrain produced no significant heritage material and its use for housing will therefore have no impact on the archaeological resources of the Northern Cape.

NOTES

- A copy of the locality maps and other appended Figures must accompany this report to SAHRA.
- Applications to SAHRA are not processed unless accompanied by the payment of R150 per application. SAHRA banking details are: ABSA, Branch Code: 312109; Current Account no.: 360 680 606.

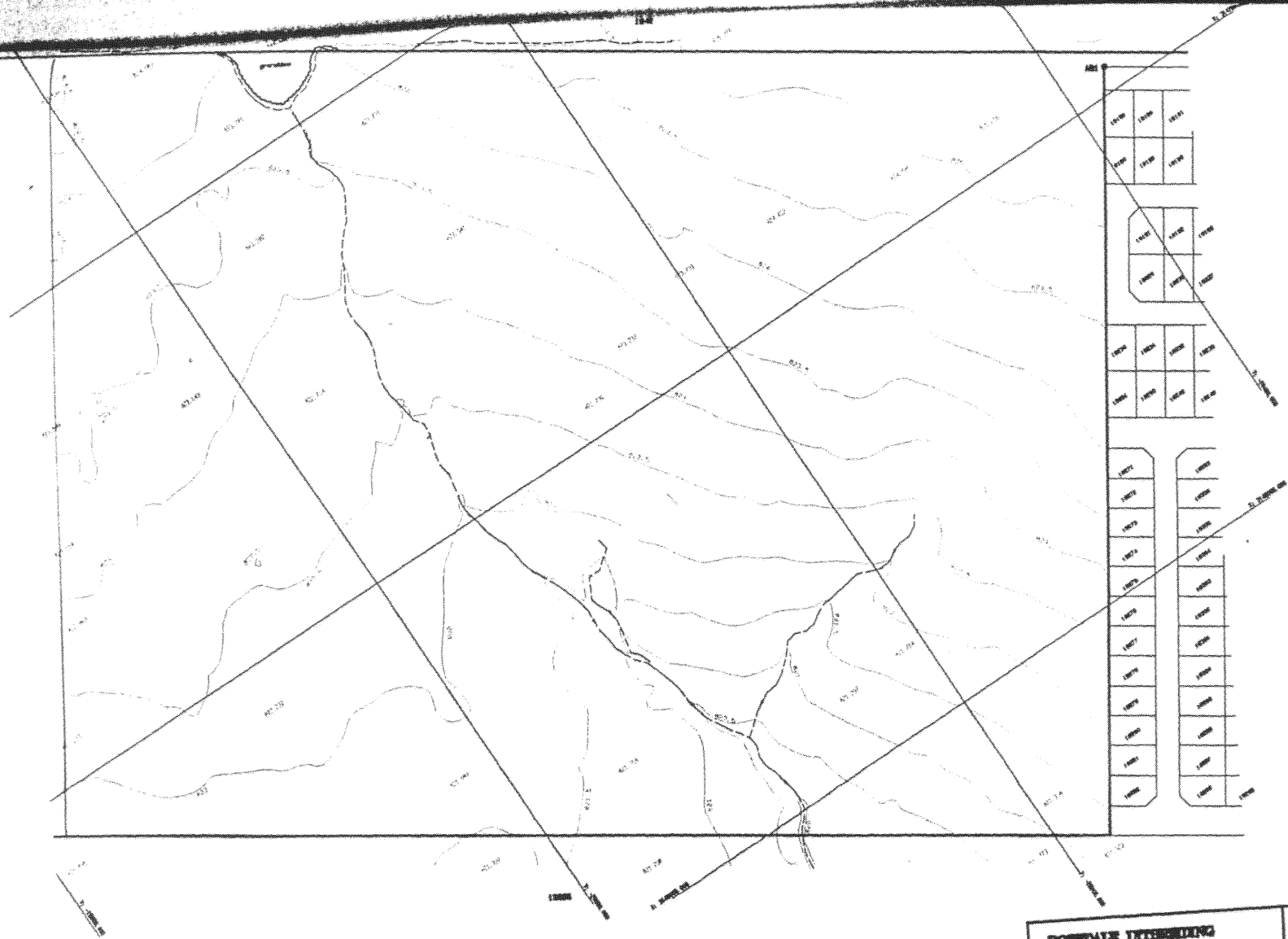


FIG. 1.
2821 AC UPINGTON.

Printed by the Government Printer, Private Bag X85, Pretoria
 Gedruk deur die Staatsdrukker, Privatebaas X85, Pretoria

If African Co-ordinate System are indicated in the
 title of this map, the African Co-ordinate System are indicated in the

FIG 2



VERTEKENDINGS NO. 1001
 101 - 20000.00 104770.12 1001.10

ROSEDALE UITERSBIDDING
INTEIL NEV KONTOR

SKAAL : 1:1000
TITEL : UNCEHL-TACHY
DATUM : Junie 2008

LUTZ & VAN ZYL
 Private Practice of Surveyors
 Tel: 081-234-0000 Fax: 081-2311100
 E-Mail: lutz@lutzvanzyl.co.za

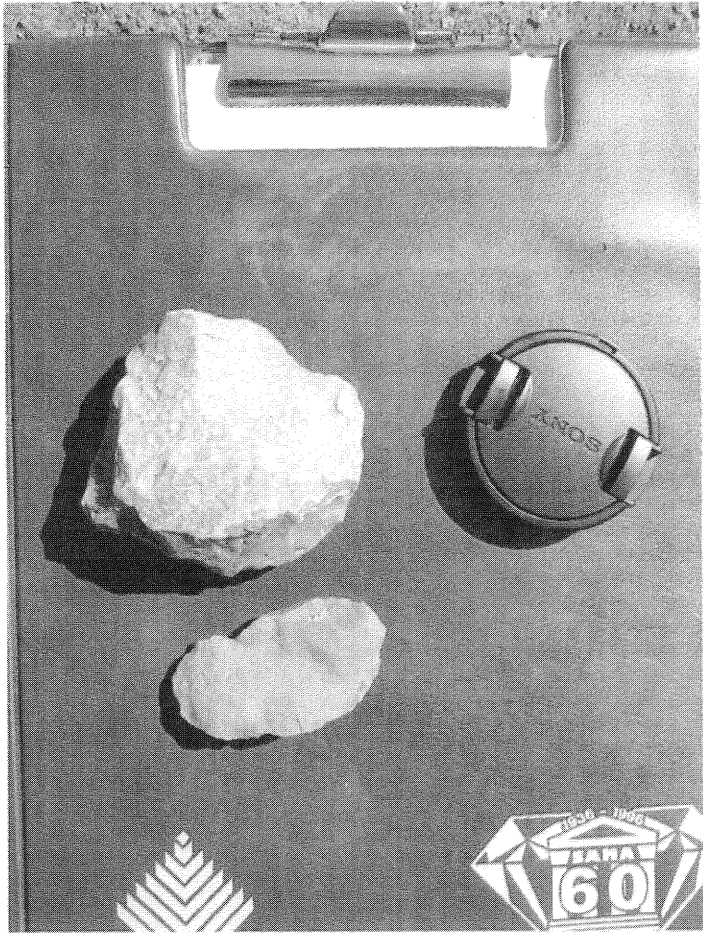


FIG 3. DISCOIDAL CORE + FLAKE, MOST POSSIBLY ESA