

62 Coetzer Avenue
Monument Park
0181

12 May 2009

Ms T Baker
ILISO Consulting
P O Box 68735
Highveld Park
0169

Dear Ms Baker

HERITAGE IMPACT ASSESSMENT: SNAKE VALLEY RAMP

As requested, we have investigated the site for the proposed onramp on the N1 in the Snake Valley area south of Pretoria. The site is located west of the N1 and north of the Snake Valley road. It centres around the following coordinates: S 25.82082, E 28.18127 (Fig. 1).

On arrival at the site it was found that the whole area have been disturbed by earth works for the proposed ramp, as well as for the Gautrain Rapid Rail Link. Nothing of the original environment remains (Fig. 2).


However, this area was previously subjected to two detailed surveys for the Gautrain Rapid Rail Link. From these, as well as personal experience, it was determined that there were no sites, features or objects of cultural heritage in this area that could be impacted on by the development of the proposed onramp.

Reference to previous surveys in the region are as follows:

- eThembeni Cultural Heritage 2006. *Heritage impact assessment of Gautrain route variants, Tshwane, Gauteng Province, South Africa*. Pietermaritzburg.
- Van Schalkwyk, J.A. 2006. *Addendum to the heritage impact assessment for the proposed Gautrain Rapid Rail Link, Gauteng Province, South Africa*, Unpublished report 2006/JvS/070. Pretoria.

Therefore, from a heritage point of view we recommend that the proposed development can continue. However, we request that if archaeological sites or graves are exposed during construction work, it should immediately be reported to a museum, preferably one at which an archaeologist is available, so that an investigation and evaluation of the finds can be made.

Yours sincerely



J van Schalkwyk (D Litt et Phil), Heritage Consultant
ASAPA Registration No.: 168
Principal Investigator: Iron Age, Colonial Period, Industrial Heritage

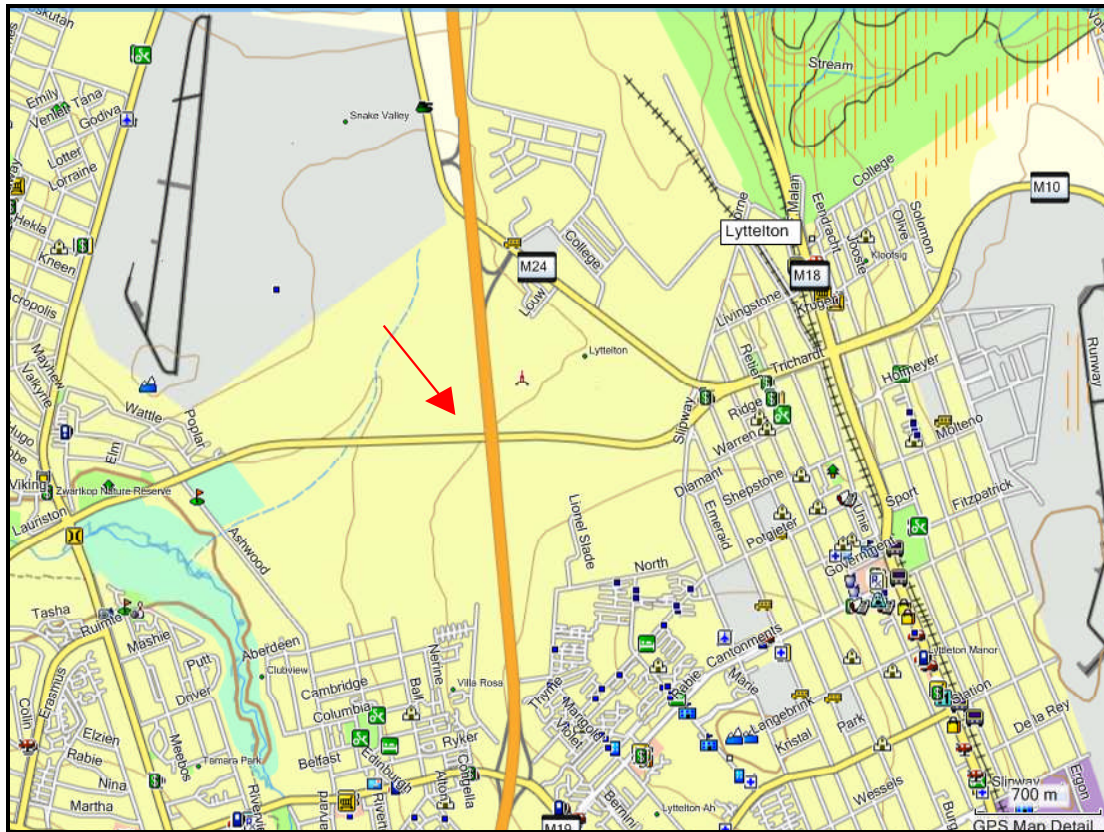


Fig. 1. Location of the study area as indicated by the red arrow.



Fig. 2. View of the study area.