



**COBUS DREYER**

**Pr. Archaeologist/Heritage Resource Specialist**

**P.O. Box 12910  
BRANDHOF 9324  
Bloemfontein  
dreyerj@telkomsa.net**

**Tel: 051-444 1187  
Fax: 051-444 4395  
Cell: 083 357 7982**

18 JUNE 2007

## **FIRST PHASE ARCHAEOLOGICAL AND CULTURAL HERITAGE ASSESSMENT OF THE PROPOSED DEVELOPMENTS OF A NEW CEMETERY AT STELLA, NORTH WEST PROVINCE**

### **EXECUTIVE SUMMARY**

A new cemetery is planned by the Naledi Local municipality, at Stella, North West Province. Three possible areas were identified and investigated.

The whole area covers old plough lands and grazing fields adjacent to an informal housing settlement.

No archaeological or cultural remains were found on any of the proposed areas of development.

I recommend that the development and planning of the site may proceed, depending on the outcome of the investigations by other specialists.

### **INTRODUCTION AND DESCRIPTION**

#### **INVESTIGATION**

Three possible sites for the development of a new cemetery at Stella were investigated. The site was visited on 25 May 2007. The Honourable Mayor and members of the Town Council of Stella accompanied us to the different sites. Manie van Wyk from Spatial Solutions, Environmental Consultants, Bloemfontein and Cedric Nelson from Bokamoso Environmental Consultants, Bloemfontein, accompanied me.

The area was examined for possible archaeological and historical material and to establish the potential impact on any cultural material that might be found. The

Heritage Impact Assessment (HIA) is done in terms of the National Heritage Resources Act (NHRA), (25 of 1999) and under the Environmental Conservation Act, (73 of 1989).

## **LOCALITY**

Three possible positions for the development of a new cemetery at Stella, North West Province (Map 1) were investigated. The town of Stella forms part of the bigger Naledi Local Municipality in the Vryburg area.

The proposed areas of development are located to the west, south and east of the informal township scheme outside the town (Map 2&3).

The region consists of an elaborate wind blown sand deposit, which was heavily disturbed earlier by agricultural activities, sports facilities (Fig.9) and by the settlement of an informal residential area nearby (Fig.10).

The following GPS coordinates (Cape scale) were taken (2624BC) (Map 2):

Point A                                    26°32'36"S. 024°51'07"E Altitude 1299m (Figs.1-3).

Point B                                    26°32'56"S. 024°50'58"E Altitude 1307m (Figs.4-6).

Point C                                    26°32'18"S. 024°50'59"E Altitude 1307m (Figs.7&8).

## **RESULTS**

The areas proposed for the development of a cemetery are placed to the west, south and east and adjacent to the existing informal township (Figs.4,6&7).

No indication of any archaeological, cultural or historical material was found in the proposed area.

## **IMPACT ASSESSMENT**

The proposed cemetery developments at Stella will have no impact on any archaeological or cultural remains at the site.

## **RECOMMENDATIONS**

There are no obvious reasons to delay the commencement of further planning and development of the site. I recommend that the proposed development of the cemetery at Stella should proceed.

## **MITIGATION**

Concerning the area for the proposed developments, no mitigation measures will be required.

## **ACKNOWLEDGEMENTS**

I thank Manie van Wyk of Spatial Solutions Incorporated Environmental Consultants, Bloemfontein, for involving me in the project.

## **SELECT BIBLIOGRAPHY:**

BERGH, J.S. (Red.). 1999. Geskiedenis Atlas van Suid-Afrika. Die vier Noordelike Provinsies. Pretoria: Van Schaik.

DEACON, J. 1992. Archaeology for Planners, Developers and Local Authorities. Cape Town: National Monuments Council.

HUMPHREYS, A.J.B. 1986. Searching for the past. Cape Town: David Philip.

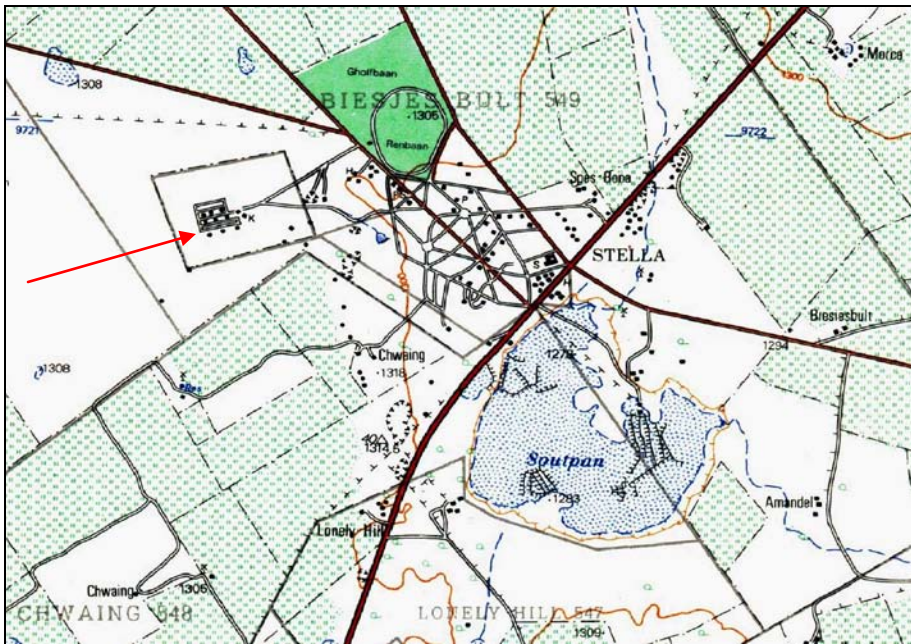
MAGGS, T.M. 1976. Iron Age Communities of the Southern Highveld. Pietermaritzburg: Natal Museum.

PISTORIUS, J.C.C. 1994. Eskom Archaeological Site Identification Guide. Johannesburg: Eskom.

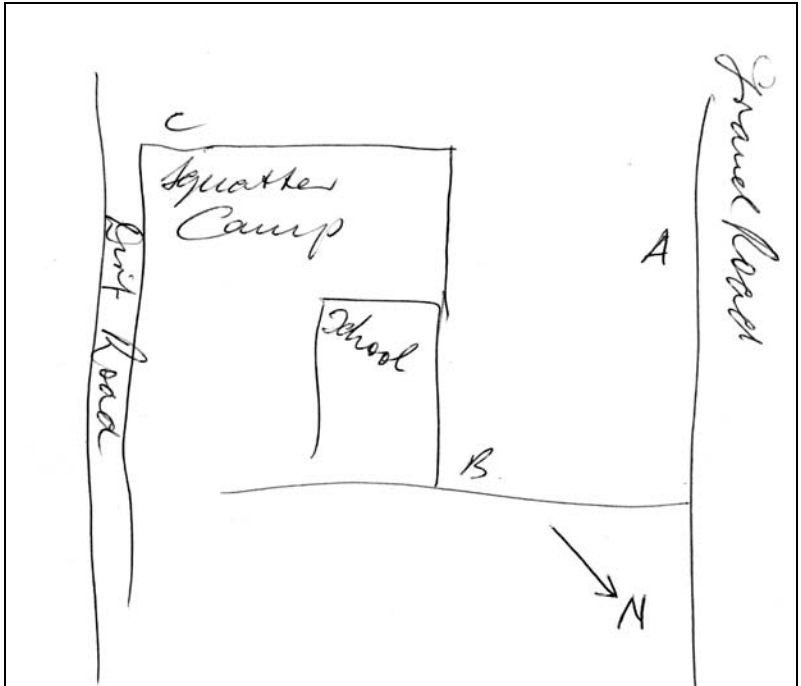
### LIST OF ILLUSTRATIONS



Map 1 Locality of Stella in relation to Vryburg and Delareyville along the N14, North West Province.



Map 2 Proposed area of development near the informal housing settlement at Stella Town lands (2624BC).



Map 3 Position of the three different cemetery developments at Stella.



Fig.1 View from Point A along the road towards the town of Stella facing north.



Fig.2 Point A facing towards the informal housing settlement west of Stella.



Fig.3 View from Point A facing east.



Fig.4 Point B facing south along the school fence.



Fig.5 Point B facing west.



Fig.6 Point B facing east along the school fence.



Fig.7 Point C facing west.





Fig.8 Point C facing south.



Fig.9 Sports facilities west of the informal township.



Fig.10 Part of the informal residential settlement at Stella.