

**HERITAGE SURVEY OF THE PROPOSED UGIE
ROAD UPGRAID AND BOOROW PIT, EASTERN CAPE**

FOR COASTAL ENVIRONMENTAL SERVICES

DATE: 13 MARCH 2012

By Gavin Anderson

**Umlando: Archaeological Tourism and Resource
Management**

PO Box 102532, Meerensee, 3901

Phone/fax: 035-7531785 Fax: 0865445631

Cell: 0836585362



TABLE OF CONTENT

INTRODUCTION	3
NATIONAL HERITAGE RESOURCES ACT OF 1999	9
METHOD	11
Defining significance.....	12
RESULTS	15
DESKTOP STUDY	15
FIELD SURVEY.....	20
MANAGEMENT PLAN	21
CONCLUSION.....	21
REFERENCES	21

TABLE OF FIGURES

FIG. 1 GENERAL LOCATION OF THE UGIEROAD UPGRADE	4
FIG. 2: AERIAL OVERVIEW OF THE UGIE ROAD UPGRADE.....	5
FIG. 3: AERIAL OVERVIEW OF THE BORROW PIT	6
FIG. 4: 1:50 000 TOPOGRAPHICAL MAP INDICATING THE AREA.....	7
FIG. 5: 1:50 000 TOPOGRAPHICAL MAP INDICATING THE BORROW PIT AREA	8
TABLE 1: SAHRA GRADINGS FOR HERITAGE SITES	14
FIG. 6: LOCATION OF THE PROPOSED ROAD UPGRADE AT UGI IN 1937	16
FIG. 7: LOCATION OF PROPOSED BORROW PIT IN 1937.....	17
FIG.8: LOCATION OF THE PROPOSED ROAD UPGRADE AT UGI IN 1982	18
FIG. 9: LOCATION OF THE PROPOSED BORROW PIT IN 1966	19
FIG. 10: NORTHERN VIEW OF THE PROPOSED BORROW PIT	20

INTRODUCTION

Umlando was contracted by Coastal Environmental Services to undertake the heritage survey of the Ugie town road upgrade, and on borrow pit. The road upgrade will occur in the town of Ugie, Eastern Cape. The borrow pit is located further northeast near Maclear, Eastern Cape. Figures 1 – 4 illustrate these areas.

The impacts will be:

- Quarries or Borrow pit
- Storage areas
- Site offices
- General road maintenance

We recommended that the Ugie roads be assessed at a desktop level as there was no new impact, while the borrow pit was to be surveyed.

No heritage sites were observed during the survey.

FIG. 1 GENERAL LOCATION OF THE UGIEROAD UPGRADE

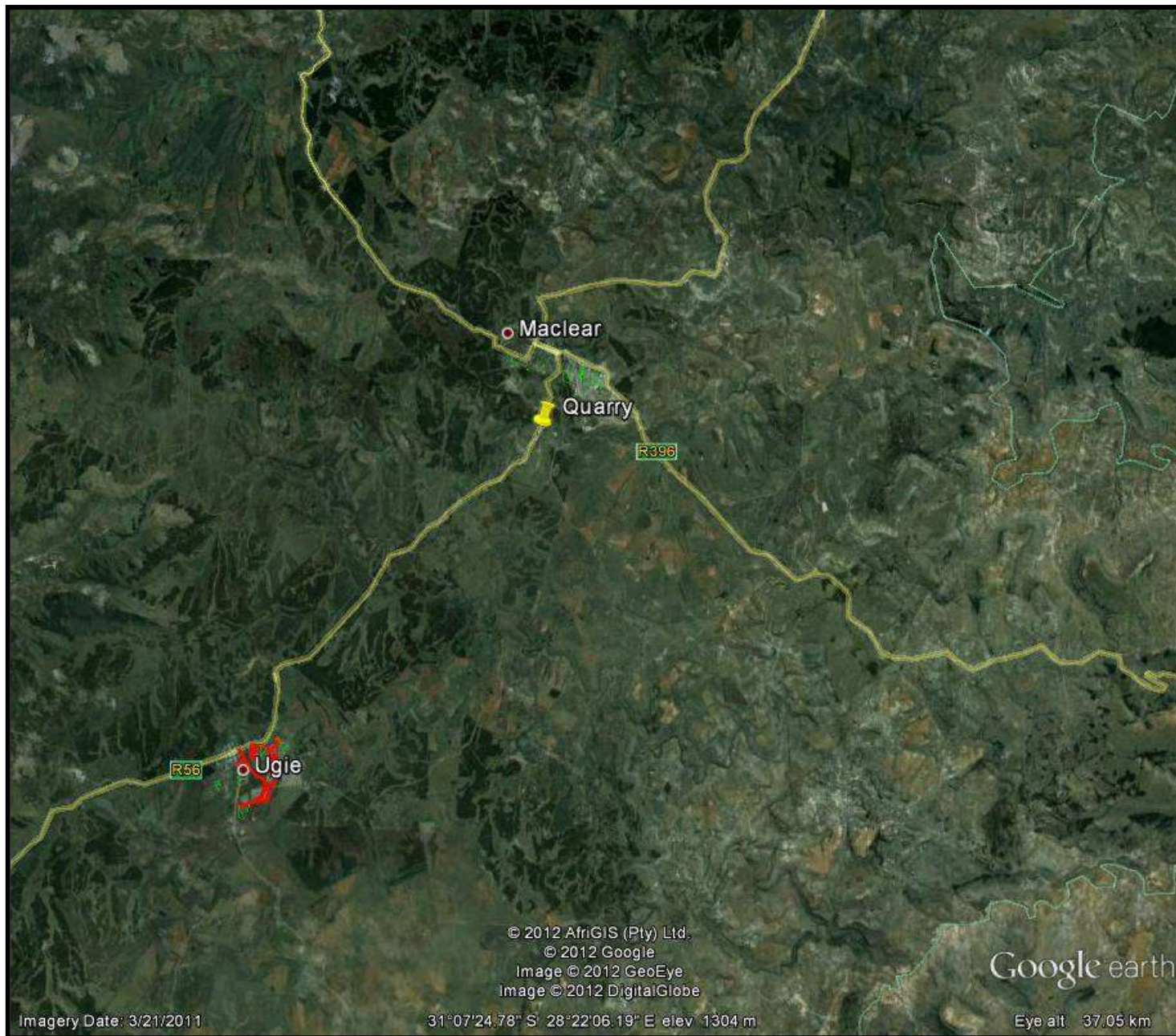


FIG. 2: AERIAL OVERVIEW OF THE UGIE ROAD UPGRADE



FIG. 3: AERIAL OVERVIEW OF THE BORROW PIT



FIG. 4: 1:50 000 TOPOGRAPHICAL MAP INDICATING THE AREA

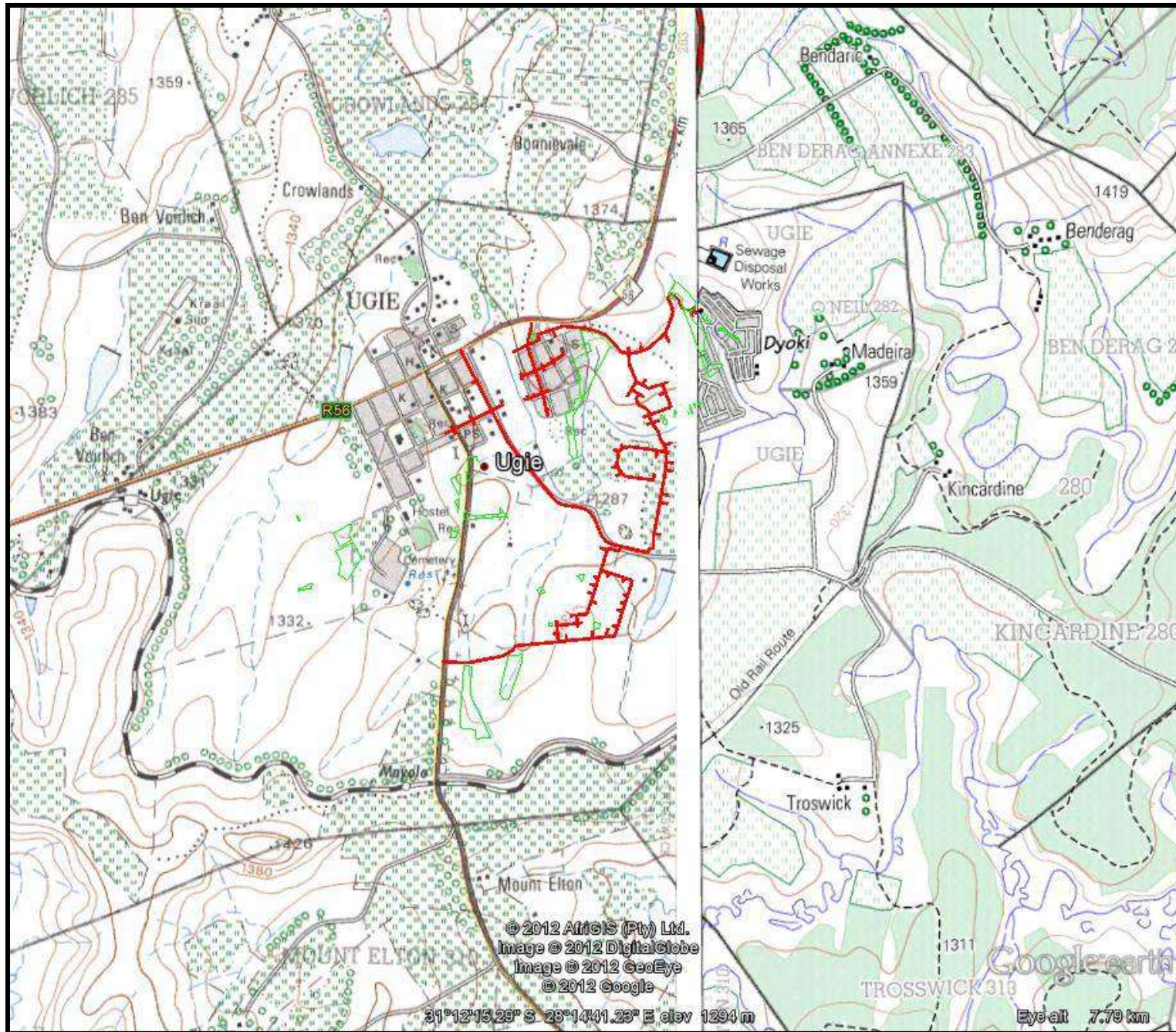
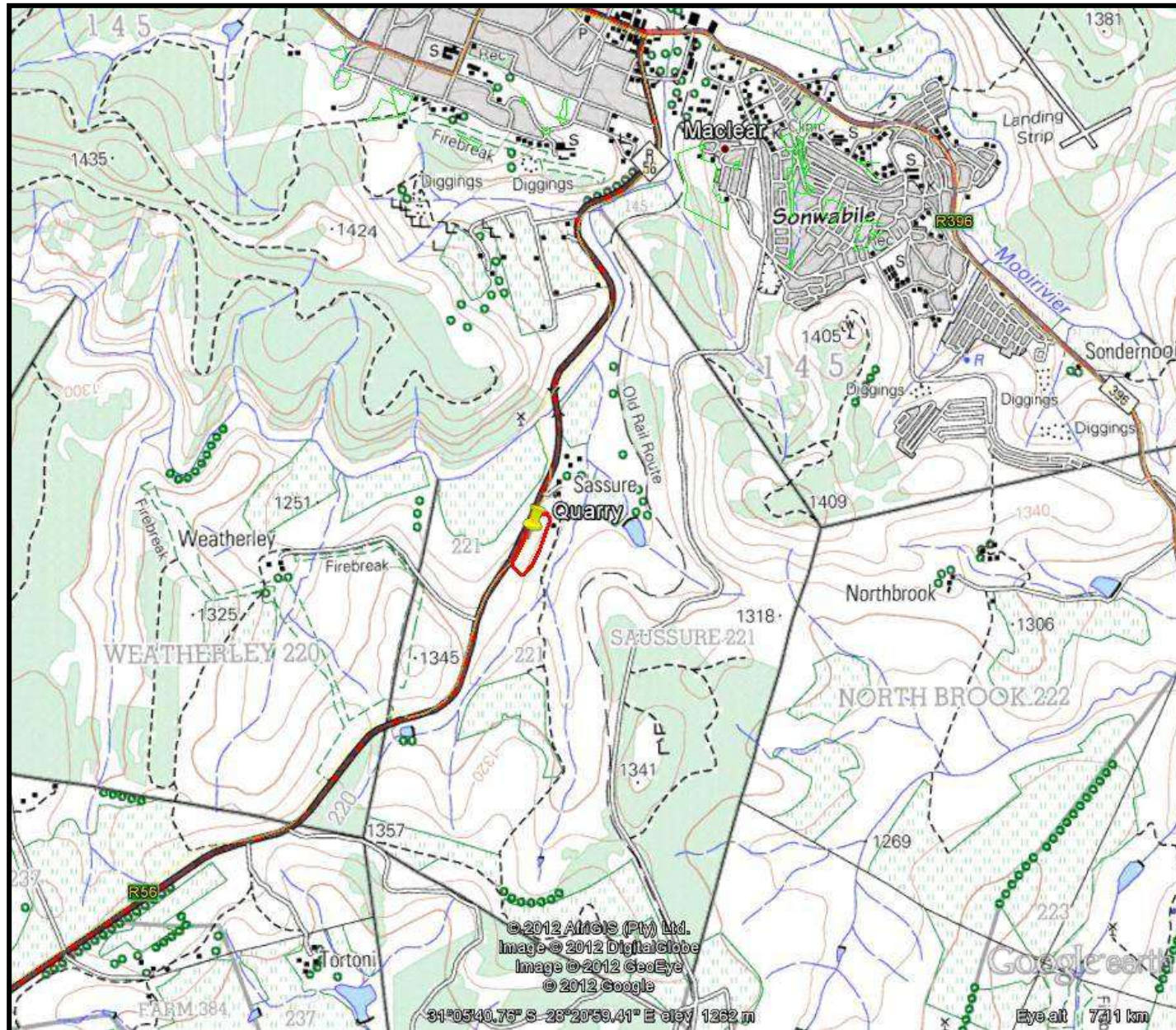


FIG. 5: 1:50 000 TOPOGRAPHICAL MAP INDICATING THE BORROW PIT AREA



NATIONAL HERITAGE RESOURCES ACT OF 1999

The National Heritage Resources Act of 1999 (pp 12-14) protects a variety of heritage resources. These resources are defined as follows:

1. “For the purposes of this Act, those heritage resources of South Africa which are of cultural significance or other special value for the present community and for future generations must be considered part of the national estate and fall within the sphere of operations of heritage resources authorities.
2. Without limiting the generality of subsection (1), the national estate may include—
 - 2.1. Places, buildings, structures and equipment of cultural significance;
 - 2.2. Places to which oral traditions are attached or which are associated with living heritage;
 - 2.3. Historical settlements and townscapes;
 - 2.4. Landscapes and natural features of cultural significance;
 - 2.5. Geological sites of scientific or cultural importance;
 - 2.6. Archaeological and palaeontological sites;
 - 2.7. Graves and burial grounds, including—
 - 2.7.1. Ancestral graves;
 - 2.7.2. Royal graves and graves of traditional leaders;
 - 2.7.3. Graves of victims of conflict;
 - 2.7.4. Graves of individuals designated by the Minister by notice in the Gazette;
 - 2.7.5. Historical graves and cemeteries; and
 - 2.7.6. Other human remains which are not covered in terms of the Human Tissue Act, 1983 (Act No. 65 of 1983);
3. Sites of significance relating to the history of slavery in South Africa;
 - 3.1. Movable objects, including—

4. Objects recovered from the soil or waters of South Africa, including archaeological and palaeontological objects and material, meteorites and rare geological specimens;
 - 4.1. Objects to which oral traditions are attached or which are associated with living heritage;
 - 4.2. Ethnographic art and objects;
 - 4.3. Military objects;
 - 4.4. objects of decorative or fine art;
 - 4.5. Objects of scientific or technological interest; and
 - 4.6. books, records, documents, photographic positives and negatives, graphic, film or video material or sound recordings, excluding those that are public records as defined in section 1(xiv) of the National Archives of South Africa Act, 1996 (Act No. 43 of 1996).
5. Without limiting the generality of subsections (1) and (2), a place or object is to be considered part of the national estate if it has cultural significance or other special value because of—
 - 5.1. Its importance in the community, or pattern of South Africa's history;
 - 5.2. Its possession of uncommon, rare or endangered aspects of South Africa's natural or cultural heritage;
 - 5.3. Its potential to yield information that will contribute to an understanding of South Africa's natural or cultural heritage;
 - 5.4. Its importance in demonstrating the principal characteristics of a particular class of South Africa's natural or cultural places or objects;
 - 5.5. Its importance in exhibiting particular aesthetic characteristics valued by a community or cultural group;
 - 5.6. Its importance in demonstrating a high degree of creative or technical achievement at a particular period;
 - 5.7. Its strong or special association with a particular community or cultural group for social, cultural or spiritual reasons;
 - 5.8. Its strong or special association with the life or work of a person, group or organisation of importance in the history of South Africa; and

5.9. sites of significance relating to the history of slavery in South Africa”

METHOD

The method for Heritage assessment consists of several steps.

The first step forms part of the desktop assessment. Here we would consult the database that has been collated by Umlando. This databases contains archaeological site locations and basic information from several provinces (information from Umlando surveys and some colleagues), most of the national and provincial monuments and battlefields in Southern Africa (<http://www.vuvuzela.com/googleearth/monuments.html>) and cemeteries in southern Africa (information supplied by the Genealogical Society of Southern Africa). We use 1st and 2nd edition 1:50 000 topographical and 1937 aerial photographs where available, to assist in general location and dating of buildings and/or graves. The database is in Google Earth format and thus used as a quick reference when undertaking desktop studies. Where required we would consult with a local data recording centre, however these tend to be fragmented between different institutions and areas and thus difficult to access at times. We also consult with an historical architect, palaeontologist, and an historian where necessary.

The survey results will define the significance of each recorded site, as well as a management plan.

All sites are grouped according to low, medium, and high significance for the purpose of this report. Sites of low significance have no diagnostic artefacts or features. Sites of medium significance have diagnostic artefacts or features and these sites tend to be sampled. Sampling includes the collection of artefacts for future analysis. All diagnostic pottery, such as rims, lips, and decorated sherds are sampled, while bone, stone, and shell are mostly noted. Sampling usually

occurs on most sites. Sites of high significance are excavated and/or extensively sampled. Those sites that are extensively sampled have high research potential, yet poor preservation of features.

Defining significance

Heritage sites vary according to significance and several different criteria relate to each type of site. However, there are several criteria that allow for a general significance rating of archaeological sites.

These criteria are:

1. State of preservation of:

- 1.1. Organic remains:
 - 1.1.1. Faunal
 - 1.1.2. Botanical
- 1.2. Rock art
- 1.3. Walling
- 1.4. Presence of a cultural deposit
- 1.5. Features:
 - 1.5.1. Ash Features
 - 1.5.2. Graves
 - 1.5.3. Middens
 - 1.5.4. Cattle byres
 - 1.5.5. Bedding and ash complexes

2. Spatial arrangements:

- 2.1. Internal housing arrangements
- 2.2. Intra-site settlement patterns
- 2.3. Inter-site settlement patterns

3. Features of the site:

- 3.1. Are there any unusual, unique or rare artefacts or images at the site?

3.2. Is it a type site?

3.3. Does the site have a very good example of a specific time period, feature, or artefact?

4. Research:

4.1. Providing information on current research projects

4.2. Salvaging information for potential future research projects

5. Inter- and intra-site variability

5.1. Can this particular site yield information regarding intra-site variability, i.e. spatial relationships between various features and artefacts?

5.2. Can this particular site yield information about a community's social relationships within itself, or between other communities?

6. Archaeological Experience:

6.1. The personal experience and expertise of the CRM practitioner should not be ignored. Experience can indicate sites that have potentially significant aspects, but need to be tested prior to any conclusions.

7. Educational:

7.1. Does the site have the potential to be used as an educational instrument?

7.2. Does the site have the potential to become a tourist attraction?

7.3. The educational value of a site can only be fully determined after initial test-pit excavations and/or full excavations.

8. Other Heritage Significance:

8.1. Palaeontological sites

8.2. Historical buildings

8.3. Battlefields and general Anglo-Zulu and Anglo-Boer sites

8.4. Graves and/or community cemeteries

8.5. Living Heritage Sites

8.6. Cultural Landscapes, that includes old trees, hills, mountains, rivers, etc related to cultural or historical experiences.

The more a site can fulfill the above criteria, the more significant it becomes. Test-pit excavations are used to test the full potential of an archaeological deposit. This occurs in Phase 2. These test-pit excavations may require further excavations if the site is of significance (Phase 3). Sites may also be mapped and/or have artefacts sampled as a form of mitigation. Sampling normally occurs when the artefacts may be good examples of their type, but are not in a primary archaeological context. Mapping records the spatial relationship between features and artefacts.

TABLE 1: SAHRA GRADINGS FOR HERITAGE SITES

SITE SIGNIFICANCE	FIELD RATING	GRADE	RECOMMENDED MITIGATION
High Significance	National Significance	Grade 1	Site conservation / Site development
High Significance	Provincial Significance	Grade 2	Site conservation / Site development
High Significance	Local Significance	Grade 3A / 3B	
High / Medium Significance	Generally Protected A		Site conservation or mitigation prior to development / destruction
Medium Significance	Generally Protected B		Site conservation or mitigation / test excavation / systematic sampling / monitoring prior to or during development / destruction
Low Significance	Generally Protected C		On-site sampling monitoring or no archaeological mitigation required prior to or during development / destruction

RESULTS

DESKTOP STUDY

The desktop study consisted of analysing various maps for evidence of prior habitation in the study area, as well as for previous archaeological surveys. There have been two surveys in the general study area (Van Schalkwyk & Wahl 2007, 2008). None of these surveys located and heritage sites, although one did note the aesthetic value of Ugie.

The 1937 aerial photograph (fig. 6) shows clearly that the current existing road has not changed its alignment by much up to 1987 (fig. 8). The road alignment will thus not affect potential heritage sites.

The 1937 aerial photograph does not show the borrow pit area very clearly, although the nearby farm buildings are visible (fig. 7). The 1966 topographical map for the borrow pit area indicates there are two settlements at the base of the borrow pit on the northeastern side (fig. 9). These settlements still exist in 2000; however, they are probably newer buildings.

FIG. 6: LOCATION OF THE PROPOSED ROAD UPGRADE AT UGIE IN 1937

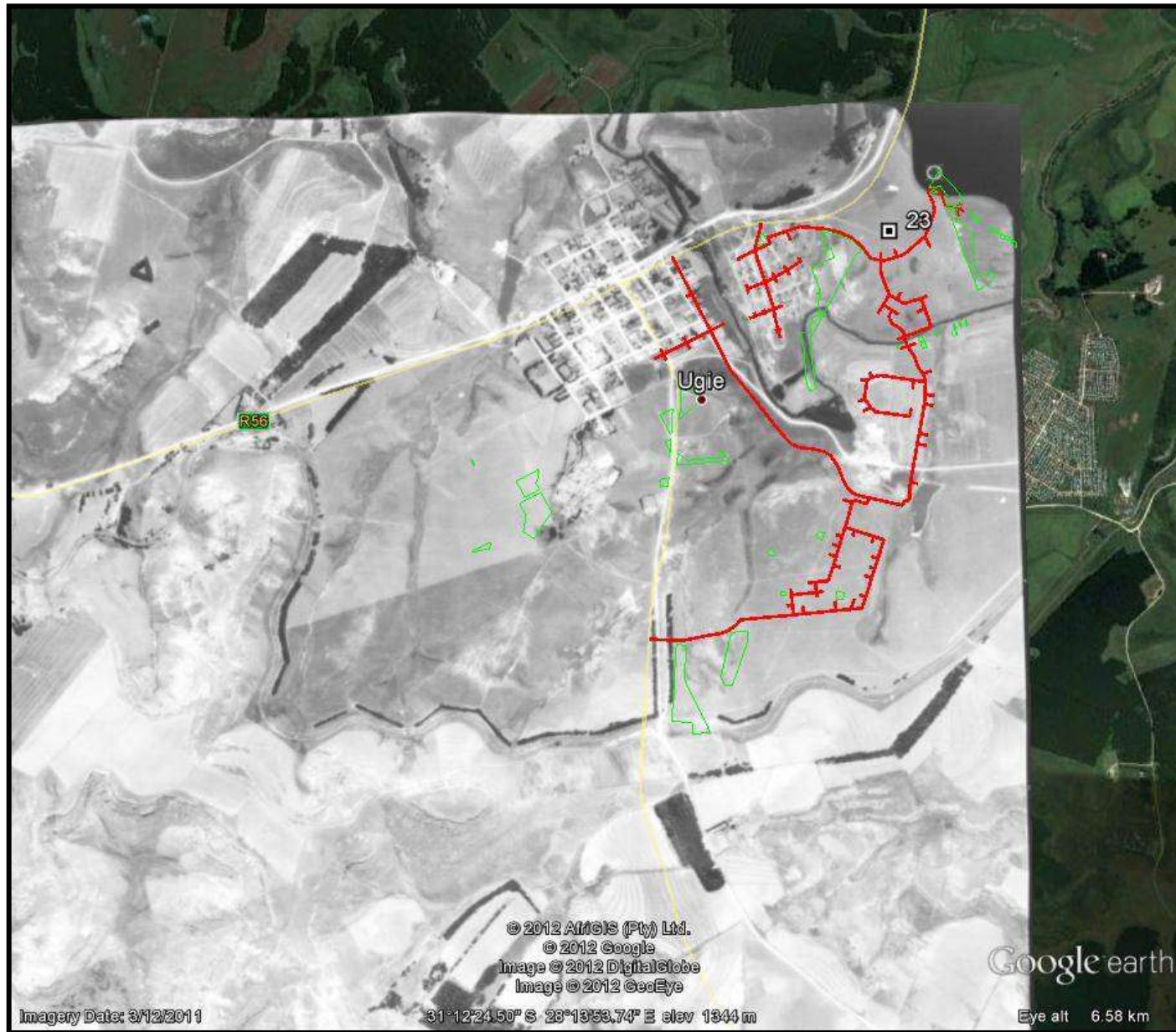


FIG. 7: LOCATION OF PROPOSED BORROW PIT IN 1937

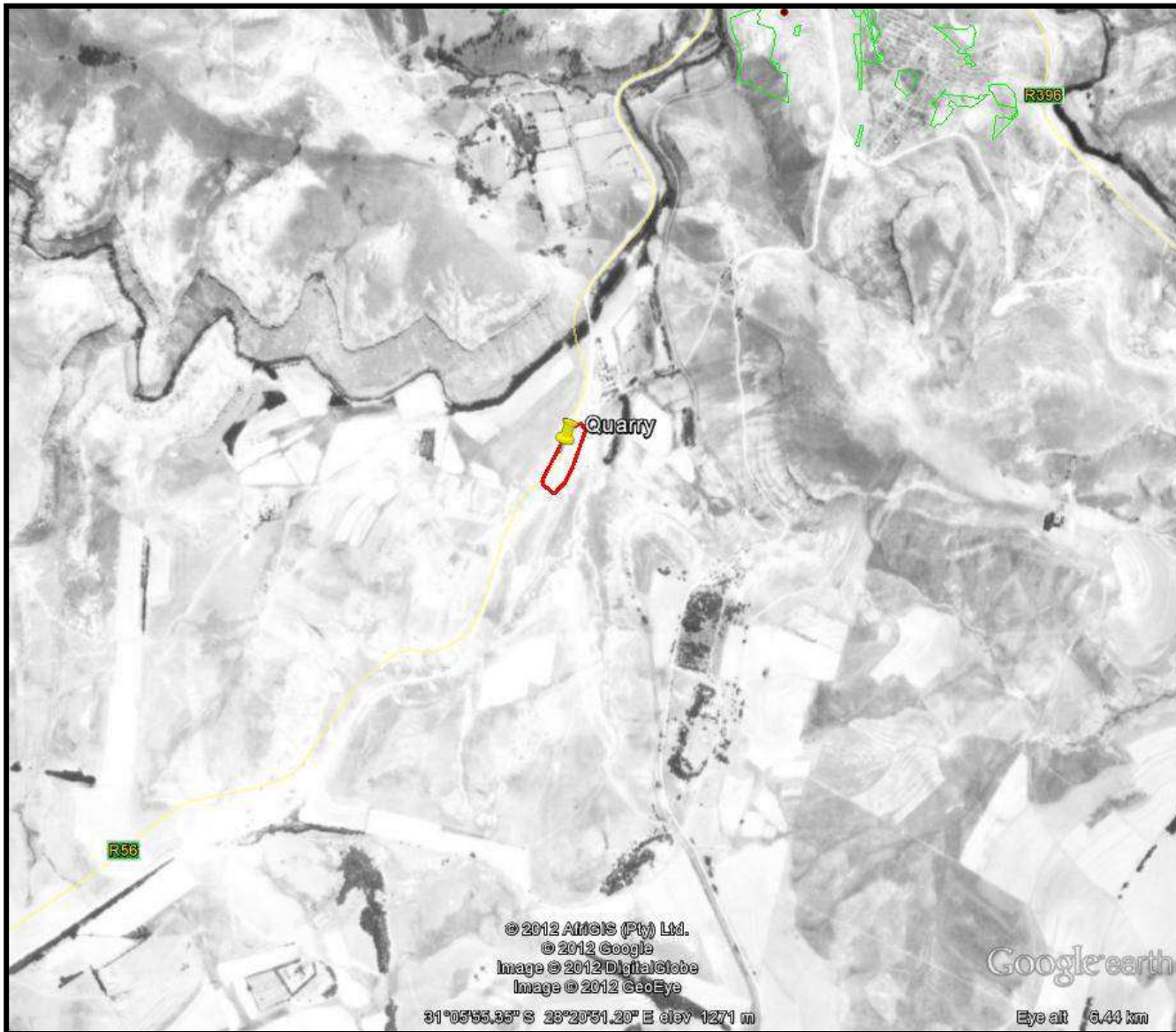
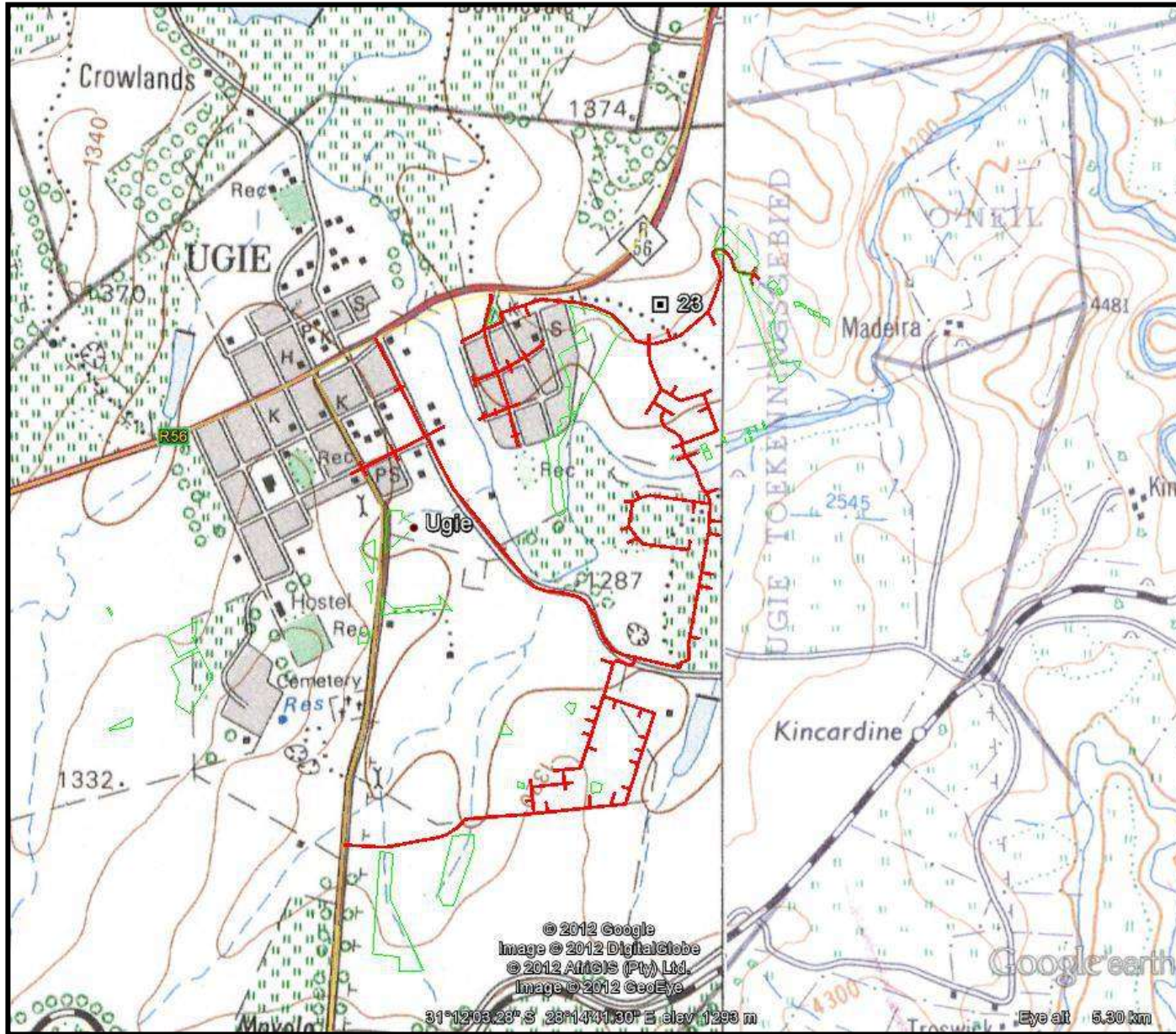


FIG.8: LOCATION OF THE PROPOSED ROAD UPGRADE AT UGIE IN 1982



FIELD SURVEY

Figure 10 shows the northern view of the proposed borrow pit from the side of the farm Sassure.

No artefacts or old structures were observed on the top of the hill, or the sides. The one side of the hill has been used as a borrow pit already, presumably for the existing road.

The road cutting exposes a very thick shale formation that will probably be palaeontologically sensitive.

FIG. 10: NORTHERN VIEW OF THE PROPOSED BORROW PIT



MANAGEMENT PLAN

No specific management plan is required as there are no obvious heritage sites.

A palaeontological survey will be required due to the high potential for fossil material.

CONCLUSION

A heritage survey was undertaken for the proposed Ugie town road upgrade and a single borrow pit. The town itself was only assessed from a desktop study, as the roads have been in use since 1937 and there will be no widening, or encroaching on unused areas, or buildings.

A borrow pit was surveyed at a desktop level and a field survey. No heritage sites were observed at the borrow pit.

REFERENCES

Van Schalkwyk, L.O. & Wahl, B. 2007. *Heritage Impact Assessment of Waste Water Treatment Works, Ugie, Eastern Cape Province, South Africa*. An unpublished report by eThembeni Cultural Heritage

Van Schalkwyk, L.O. & Wahl, B. 2008. *Heritage Impact Assessment of Shopping Centre, Ugie, Eastern Cape Province, South Africa*. An unpublished report by eThembeni Cultural Heritage