

Exemption of Phase 1 Archaeological and Palaeontological Impact Assessments for the construction of Chicken Broiler Units on 4 farm properties in the north-eastern Free State*.

The construction of chicken broiler units is proposed on 4 different farm properties in the north-eastern Free State (Table 1). The proposed structures will be erected on land formerly altered by modern farming activities (e.g. near kraals and farm outbuildings), and on existing agricultural land utilized for planting and pasture (see photographic record in figures 1 to 8 provided in Appendix 1). Potential archaeological impact at each of the proposed localities is therefore considered to be non-existent.

Underlying geology at Bovenuit consist of dolerite intrusions which is not palaeontologically significant. Bedrock at Tweeling Townlands, De Jagersrust and Pax are made of potentially fossil-bearing Beaufort Group strata, but the likelihood of palaeontological impact below the existing agricultural land is considered to be extremely low (Figures 9 and 10 provided in Appendix 1).

It is recommended that Phase 1 Archaeological and Palaeontological Impact Assessments not be required as a prerequisite for the planned developments.

Yours truly,



Dr Lloyd Rossouw
National Museum
PO Box 266
Bloemfontein 9300
Tel. 051 4479 609
Cell. 0842505992
lloyd@nasmus.co.za

***Report prepared for H2ON Environmental Consultants, 21 Dromedaris Street Dan Pienaar, Bloemfontein 9301**

Table 1. Locality information of the proposed chicken broiler units.

				Chicken Broiler		
	Farm	Farm number	Map number	Coord S	Coord E	District
1	Bovenuit	118/1	2728BC	27.4938	28.6019	Frankfort
2	Tweeling Townlands	1032/0	2728DA	27.5676	28.5141	Frankfort
3	De Jagersrust	547/0	2728CD	27.8296	28.471	Reitz
4	Pax	498/0	2728DC	27.8023	28.5775	Reitz

Appendix 1. Photographic record and geological maps of the affected areas.



Figure 1. Aerial view of the proposed chicken broiler locality at Bovenuit.

2012/01/31



Figure 2. The proposed chicken broiler site and overlying substrate at Bovenuit.



Figure 3. Aerial view of the proposed chicken broiler locality at Tweeling Townlands.



Figure 4. The proposed chicken broiler site and overlying substrate at Tweeling Townlands



Figure 5. Aerial view of the proposed chicken broiler locality at De Jagersrust.



Figure 6. The proposed chicken broiler site and overlying substrate at De Jagersrust



Figure 7. Aerial view of the proposed chicken broiler locality at Pax.

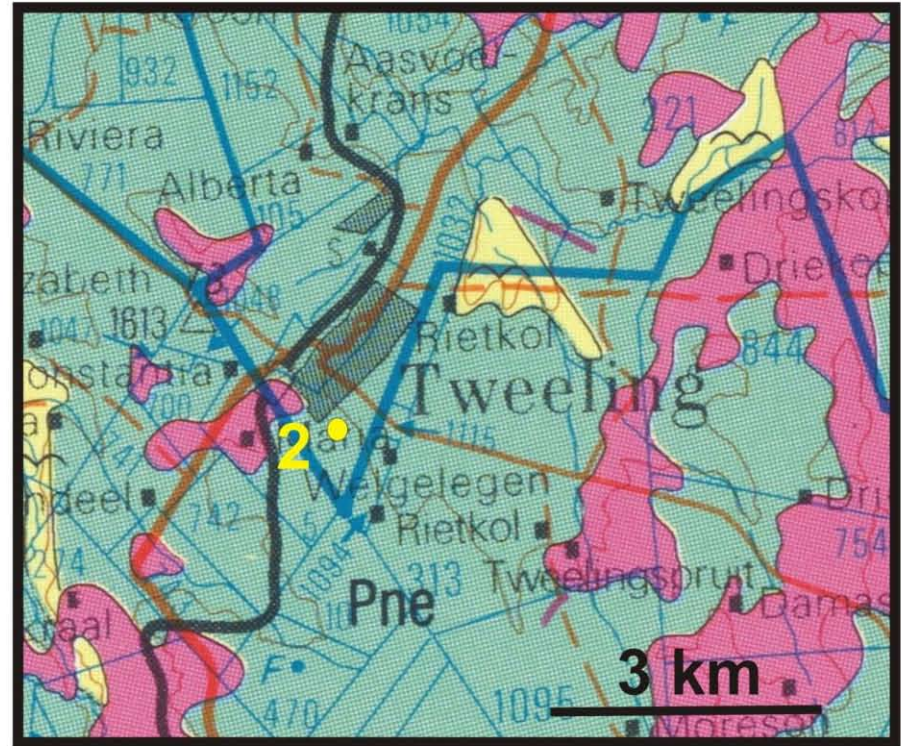
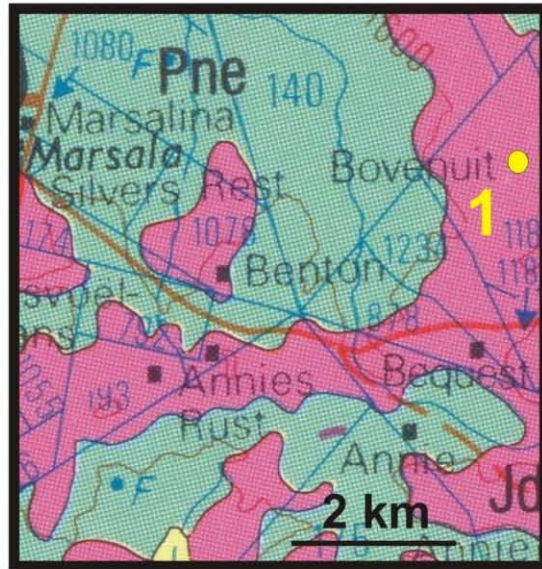


Figure 9. Portions of 250 000 scale geological map 2728 Frankfort (Geological Survey 1992). The underlying geology at Bovenruit (1) consist of Jurassic dolerite intrusions (*Jd*). The Tweeling Townlands (2) is located on mudstones, sandstones and shales of the Adelaide Subgroup (*Pne*, Normandien Fm., Estcourt Fm.).

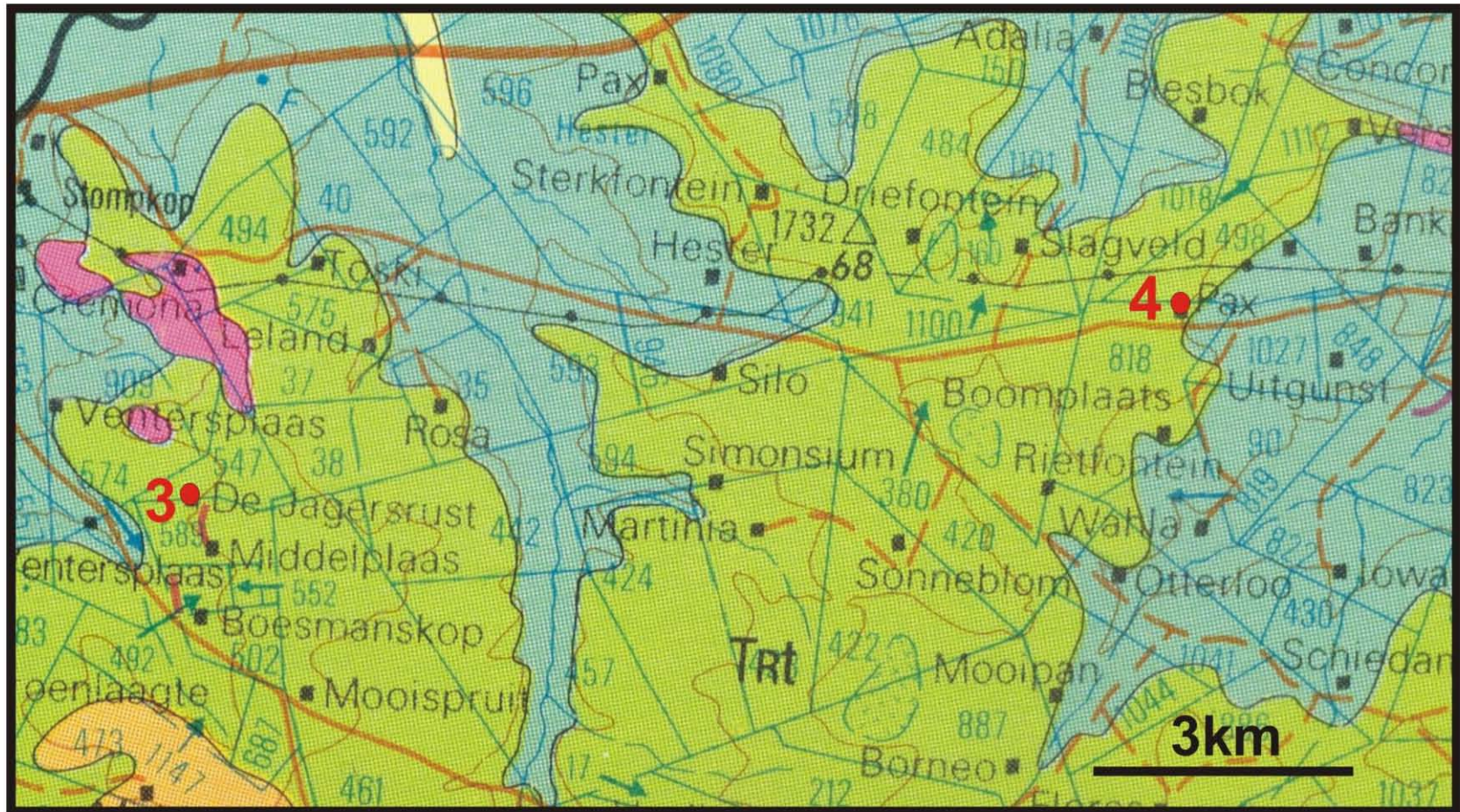


Figure 10. Portion of 250 000 scale geological map 2728 Frankfort (Geological Survey 1992). The bedrock geology at De Jagersrust (3) and Pax (4) is made up of mudstones, sandstones and siltstones of the Tarkastad Subgroup (*Trt*, Driekoppen Fm., Verkykerskop Fm.).