

# **AN ASSESSMENT OF IMPACTS ON ARCHAEOLOGICAL HERITAGE RESULTING FROM PROPOSED RESIDENTIAL DEVELOPMENT (LOW COST HOUSING) AT POFADDER, NORTHERN CAPE**

**Magisterial district: Pofadder  
Local Municipality: Khâi-Ma Municipality**

Assessment conducted in terms of  
Section 38 (8) of the National Heritage Resources Act (Act 25 of 1999)  
for inclusion in a basic assessment report

Prepared for

**Van Zyl Environmental Consultants cc**

On behalf of

**Khâi-Ma Municipality**

September 2010



Report by

**Dave Halkett**

**ACO Associates  
8 Jacobs Ladder  
St James  
7945**

Phone 0731418606  
Email: [acoassociates@gmail.com](mailto:acoassociates@gmail.com)

1. INTRODUCTION ..... 3

2. PURPOSE OF THE STUDY ..... 3

3. METHODOLOGY ..... 3

4. LIMITATIONS IN PERFORMING THE SURVEY ..... 4

5. THE RECEIVING ENVIRONMENT ..... 4

6. OBSERVATIONS ..... 4

    6.1 Pre-colonial material ..... 4

    6.2 Recent material ..... 4

7. CONCLUSIONS ..... 4

8. RECOMMENDATIONS ..... 4

9. PHOTOGRAPHS ..... 5

10. COMPANY PROFILE ..... 7

    Declaration ..... 8

## 1. INTRODUCTION

ACO Associates cc was requested to undertake an Archaeological Impact Assessment (AIA) of the proposed site for residential units (low cost housing) on the outskirts of Pofadder in the Northern Cape province. The location of the affected area is shown in Figure 1 in relation to key landmark features.

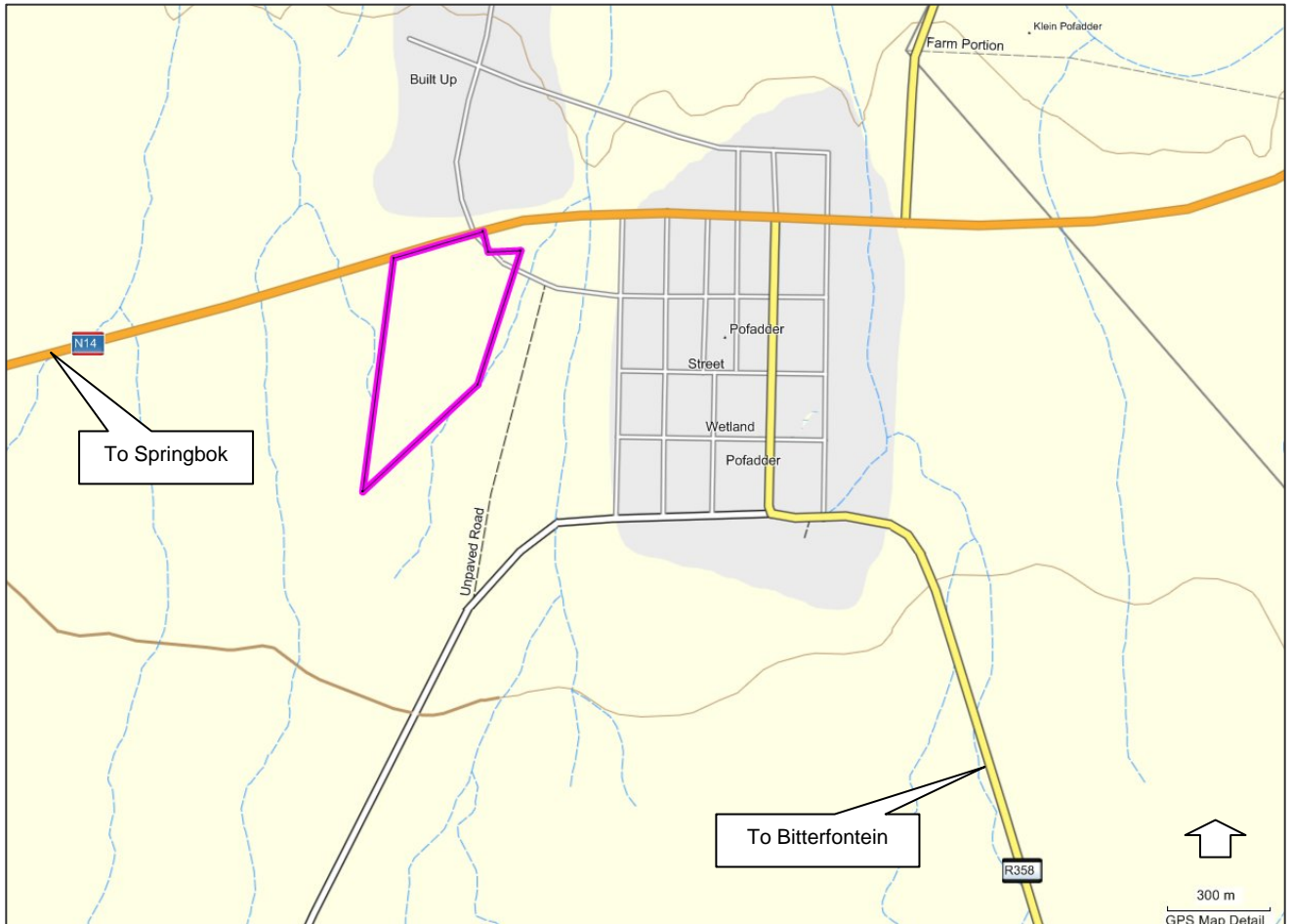


Figure 1: The location of the proposed low cost housing development in relation to the town of Pofadder

## 2. PURPOSE OF THE STUDY

To determine if any archaeological heritage would be disturbed by the proposed activities.

## 3. METHODOLOGY

Co-ordinates and maps of the proposed activities were provided by the Environmental Consultant. The boundary was loaded to a GPS unit and used to navigate while we were in the area. The site was examined on the 29<sup>th</sup> September 2010 using a 4x4 vehicle and conducting foot searches away from the vehicle in some instances. The entire site amounting to some 19 Ha was examined.

#### **4. LIMITATIONS IN PERFORMING THE SURVEY**

No limitations were experienced. Visibility in the arid landscape was excellent and numerous existing footpaths, tracks and roads criss-crossed the site providing easy access.

#### **5. THE RECEIVING ENVIRONMENT**

The site is relatively flat with sparse vegetation. A dry stream bed marks part of the southern boundary. Numerous tracks and roads have been created and dumping is noted in some places. Apart from roads, other disturbance was noted to the west where it appears a subterranean pipeline crosses the site and its length is marked by a low soil mound. There appears to have been some scraping or grading in some areas in the past. Bedrock protrudes through the surface in places.

#### **6. OBSERVATIONS**

##### **6.1 Pre-colonial material**

We noted a presence of archaeological material in the form of stone artefacts of very low density across most of the site. The material appears to be Middle Stone Age (more than 40 000 years old) much of which was made on quartz and occasional quartzite pieces. No organic residues (bone, ostrich eggshell etc) were associated with the stone. One scatter that appeared more concentrated was noted on the edge of the western boundary (PO1 - S29.13097° E19.38373°, see photographs), but this and the more general scatter is considered to be of very low significance.

##### **6.2 Recent material**

The foundations of 2 small (houses?) were observed at S29.12734° E19.38743° and S29.12868° E19.38750° (see photographs for PO2). These had stone foundations but cement had been used for mortar. Floor slabs were modern cement. These probably date to the mid 20<sup>th</sup> century. Items found around the ruin suggest residential use and ceramics, glass and metal (tin) fragments were observed (see photos).

#### **7. CONCLUSIONS**

The archaeological material is of low significance and while it will be impacted by the proposed activities, its context and lack of association with organic material means that there will not be a loss of valuable scientific information. The ruins are of relatively recent age and are not believed to have any heritage significance.

#### **8. RECOMMENDATIONS**

No mitigation of archaeological material is required.

## 9. PHOTOGRAPHS



(l&r) The receiving environment looking east towards Pofadder



(l) a possible pipeline runs n-s marked by a low soil mound (r) typical flat surfaces where artefacts are found - this is PO1



(l) Examples of artefacts, probably Middle Stone Age, quartz and quartzite from PO1 (r) The foundations of a small house - PO2



Ceramics and glass found near the ruin at PO2

## 10. COMPANY PROFILE

---

### ACO ASSOCIATES cc

<b>Registration number</b>	2008/234490/23
<b>Name</b>	ACO Associates
<b>Registration date</b>	06/11/2008
<b>Enterprise type</b>	Close corporation
<b>Principal business</b>	Archaeological/Heritage Impact Assessment
<b>Tax reference no</b>	989/8031/15/1
<b>Vat no</b>	Not registered
<b>Active members</b>	David John Halkett (5807235148080) Timothy James Graham Hart (6007295052087)
<b>Business address</b>	8 Jacobs Ladder, St James, 7945
<b>E-mail</b>	acoassociates@gmail.com

---

ACO Associates was established in late 2008 as an allied operation to the Archaeology Contracts Office at the University of Cape Town, which is also directed by David Halkett and Tim Hart. The cc enables us to take on a wider range of projects and to provide cost effective pricing for smaller projects. We are assisted by Dr Lita Webley, Mr Jayson Orton and Ms Liesbet Schietecatte.

Our principal business remains Archaeological and Heritage Impact Assessments arising from the requirements of the National Heritage Resources Act (Act 25 of 1999), frequently arising out of the requirements of Environmental Impact Assessments.

With 22 years of accumulated experience, and having completed over 800 projects, members of ACO Associates cc are equipped to handle assignments ranging from detailed, sensitive excavations, to large-scale field surveys and assessments of historic places. The team will work anywhere where their skills can be effectively used both in South Africa and abroad but most often working in the Northern Cape, Eastern Cape and Western Cape. We frequently function as part of multidisciplinary teams on EIA projects and understand the need to provide efficient service and meet deadlines.

Our areas of heritage expertise in terms of the National Heritage Resources Act are:

- Preparation of the NID (Notice of Intent to Develop) form for Heritage Western Cape;
- Assessment, excavation and/or management of pre-colonial sites such as shell middens, stone artefact scatters, rock art sites, cave deposits dating to the Early, Middle and Late Stone Ages as well as late Pleistocene fossil bone accumulations. We are also able to assess pre-colonial burials and assist with the recovery should it be necessary;
- Assessment, excavation and/or management of colonial sites, middens, exhumation of cemeteries, analysis of building sequences, industrial structures, historic landscapes and features;
- The analysis and curation of artefacts from both colonial and pre-colonial contexts. We can facilitate artefact conservation through outsourcing;
- The development of conservation and management plans for a variety of heritage sites.

**David Halkett** is a registered professional archaeologist (principal investigator level) with 22 years of working experience in heritage impact assessment, conservation and archaeological research. He has worked in a very wide variety of contexts having participated in over 800 heritage projects ranging from impact assessment to mitigation of archaeological sites in suburban, rural and industrial situations. David Halkett's experience has led to his participation as an advisor to the National Monuments Council before 2000, a member of Heritage Western Cape regulatory committees, SAQUA and recently a forensic consultant to the NPA. He regularly leads field projects on behalf of other research organisations. Having run the Archaeology Contracts Office at the University of Cape Town for 21 years, Dave Halkett is now also a director of the recently established ACO Associates cc. David is a long standing member of the Association of Professional Archaeologists (ASAPA) and an accredited Principal Investigator of its CRM (Cultural Resource Management) section.

### **Declaration**

David Halkett of ACO Associates cc is an independent specialist consultant who is in no way connected with the proponents, other than delivery of consulting services.

A handwritten signature in black ink, appearing to read 'D. Halkett', with a horizontal line underneath.