

PALAEONTOLOGICAL ADDENDUM

S24G APPLICATION:

BURLINGTON CITRUS DEVELOPMENT- NEAR COOKHOUSE, SARAH BAARTMAN DISTRICT MUNICIPALITY, EASTERN CAPE PROVINCE-

Attention: Mr Chris Bradfield

Isi-Xwba Consulting

Burlington Citrus Development: Historical unauthorised clearing of Vegetation

This Palaeontological Addendum is prepared for the Section 24G application for the rectification of unlawful commencement or continuation of activities (NEMA 1998), for the clearing of indigenous vegetation for agricultural purposes. These activities took place during the period of 2004-2009.

Locality

Burlington Citrus is located on Farm Doorndraai 144, near Cookhouse, Sarah Baartman District Municipality, Eastern Cape.



Project : Burlington Citrus Mapped Vegetation and Sensitivity

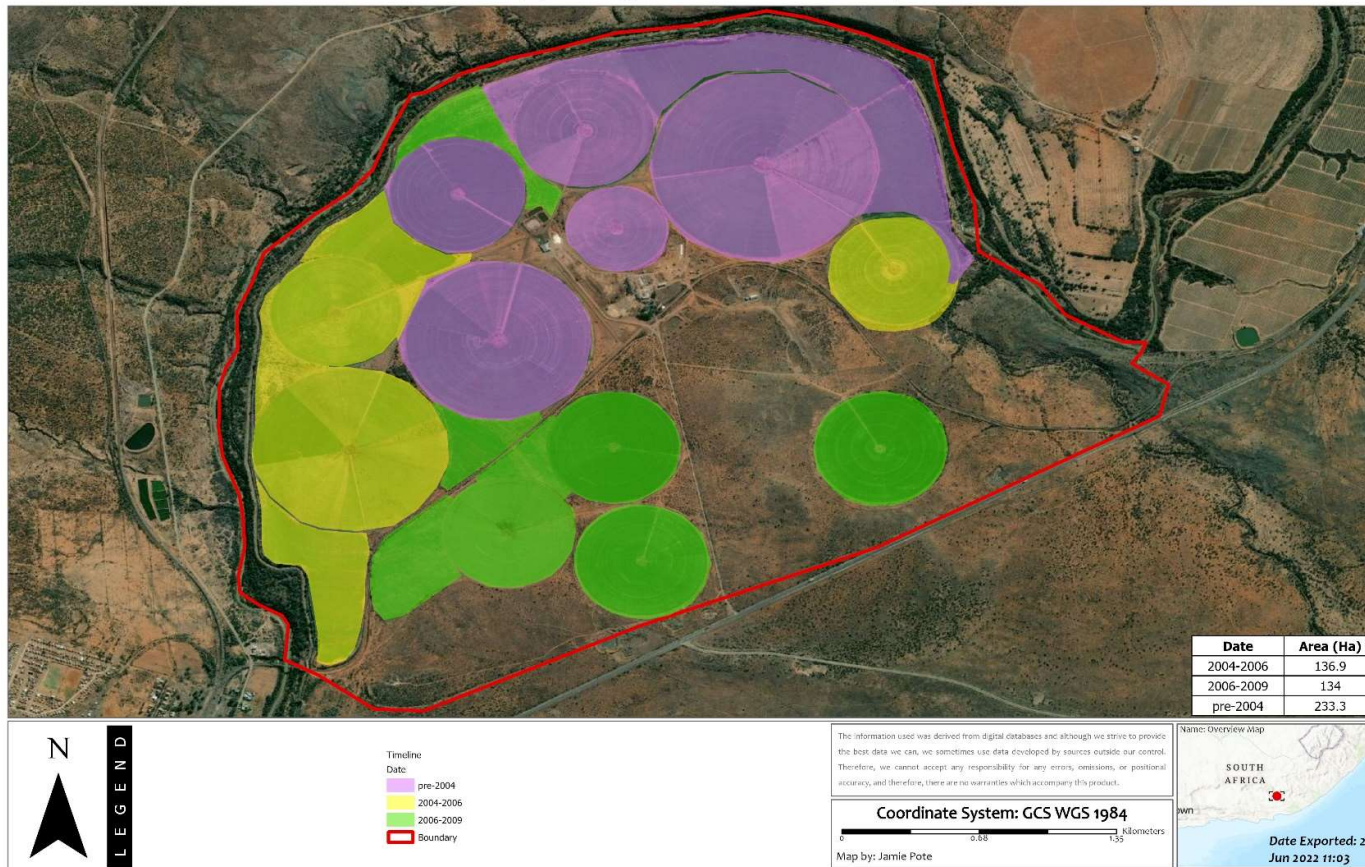


Figure 1: Timeline for Burlington vegetation clearing.



The author conducted a site investigation for an agricultural development on a portion of Burlington Citrus farm in 2020. This Palaeontological Impact Assessment was submitted to South African Heritage Resources Information System (SAHRA, CaseID 16533).

Butler, E., 2020. Palaeontological Field Assessment for the Proposed Burlington Citrus Farm Development, Eastern Cape.

The findings of the 2020 report are as follow:

“The development footprint is mainly underlain by Quaternary Superficial Deposits while a small portion is underlain by the Middleton Formation of the Adelaide Subgroup (Beaufort Group, Karoo Supergroup). According to the PalaeoMap of the South African Heritage Resources Information System (SAHRIS) the Palaeontological Sensitivity of the Quaternary Superficial Deposits is Low but locally High while that of the Adelaide Subgroup is Very high (Almond *et al*, 2013; SAHRIS website)”.

“A site-specific field survey of the development footprint was conducted on foot and by motor vehicle on 15 July 2020. Elsewhere in the Karoo Basin numerous fossils have been uncovered in these geological sediments but in the development footprint no fossiliferous outcrops were uncovered during the site visit. The scarcity of fossil heritage at the proposed development footprint indicates that the impact of the proposed development will be of a medium significance in palaeontological terms. It is consequently recommended that no further palaeontological heritage studies, ground truthing and/or specialist mitigation are required pending the discovery of newly discovered fossils”.

A Chance Find Protocol were included in the report.



Findings and Recommendations

As no Palaeontological Heritage were detected during the previous site investigation it is highly unlikely that the developments during 2004-2009 impacted on Palaeontological Heritage.

Kind Regards
Elize Butler

Palaeontologist
(Banzai Environmental (Pty) Ltd)