



BLACKWOOD SOLAR ENERGY FACILITY



VENTUSA
ENERGY

**Water Consumption Study,
January 2014**

Prepared for:
Mr Lakes Chakane
Technical Services Director
Tokologo Local Municipality

Contact Person:
David Peinke
Ventusa Energy
1st floor, Block A – 107
West Quay Building
7 West Quay Rd, Waterfront
Cape Town, 8001, South Africa
T: +27 21 446 7084; F: +27 21 446 7090
E: david.peinke@ventusaenergy.com


Date: 20 January 2014

DOCUMENT HISTORY

REVISION HISTORY

Revision No	Revision Date	Author
Rev 1.0	2014.01.20	David Peinke

APPROVAL FOR RELEASE

Name	Title	Signed
K. Kirby	Chief Executive Officer	

DISTRIBUTION

Name	Designation	Company	Date
Jacques Proust	Project Development Engineer	VentuSA Energy	2014.01.20
Patrick Hailot	Executive Chairman	VentuSA Energy	2014.01.20
João Sá	President	VentuSA Energy	2014.01.20
Keith Kirby	Chief Executive Officer	VentuSA Energy	2014.01.20
Anthony De Graaf	Administrative & Financial Manager	VentuSA Energy	2014.01.20
blackwood@ventusaenergy.com	Blackwood SEF Project Server	VentuSA Energy	2014.01.20

TABLE OF CONTENTS

DOCUMENT HISTORY	II
TABLE OF CONTENTS	III
LIST OF ACRONYMS	IV
1. PURPOSE AND SCOPE	1
2. LOCATION	1
3. BASIC DESCRIPTION OF THE FACILITIES	2
4. WATER NEEDS AND CONSUMPTIONS	2
4.1. INTRODUCTION	2
4.2. CONSTRUCTION PHASE	2
4.2.1. SANITATION WATER REQUIREMENTS	2
4.2.2. CONSTRUCTION PROCESS WATER REQUIREMENTS	3
4.3. OPERATIONAL PHASE.....	3
4.3.1. SANITATION WATER REQUIREMENTS	3
4.3.2. PLANT MAINTENANCE WATER REQUIREMENTS	3
4.4. WATER STORAGE REQUIREMENTS.....	4
4.5. SUMMARY OF WATER CONSUMPTIONS	4
5. GROUNDWATER AND RAINWATER	4
5.1. INTRODUCTION	4
5.2. GROUNDWATER.....	4
5.3. RAINWATER.....	5
5.4. FLOW ESTIMATE.....	7
6. LIST OF REFERENCES	7

LIST OF ACRONYMS

AC	Alternating Current
DC	Direct Current
kV	Kilovolt
MW	Megawatt
MWp	Megawatt Peak
PV	Photovoltaic
SEF	Solar Energy Facility
SWSA	Strategic Water Source Areas
UN	United Nations
Wp	Watt Peak
WUL	Water Use License

1. PURPOSE AND SCOPE

This document defines the scope of the study for the definition of water needs and consumption during the **Construction Phase** and in the **Operation Phase** for the Blackwood Solar Energy Facility (SEF) and substation in the Free State Province, South Africa.

2. LOCATION

The Blackwood SEF is proposed on the remainder of portion 1 of the farm Pandamsfontein 1593 that falls within the Tokologo Local Municipality, which is part of the Lejweleputswa District Municipality. The Project site is situated in the Free State Province approximately 25km south-east of Kimberley and 45km south-west of Boshof (see Figure 1). The proposed development is traversed by the Kimberley DS – Skietpan Switching Station 132kV power line. Access to the site is provided directly from the N8 national highway.

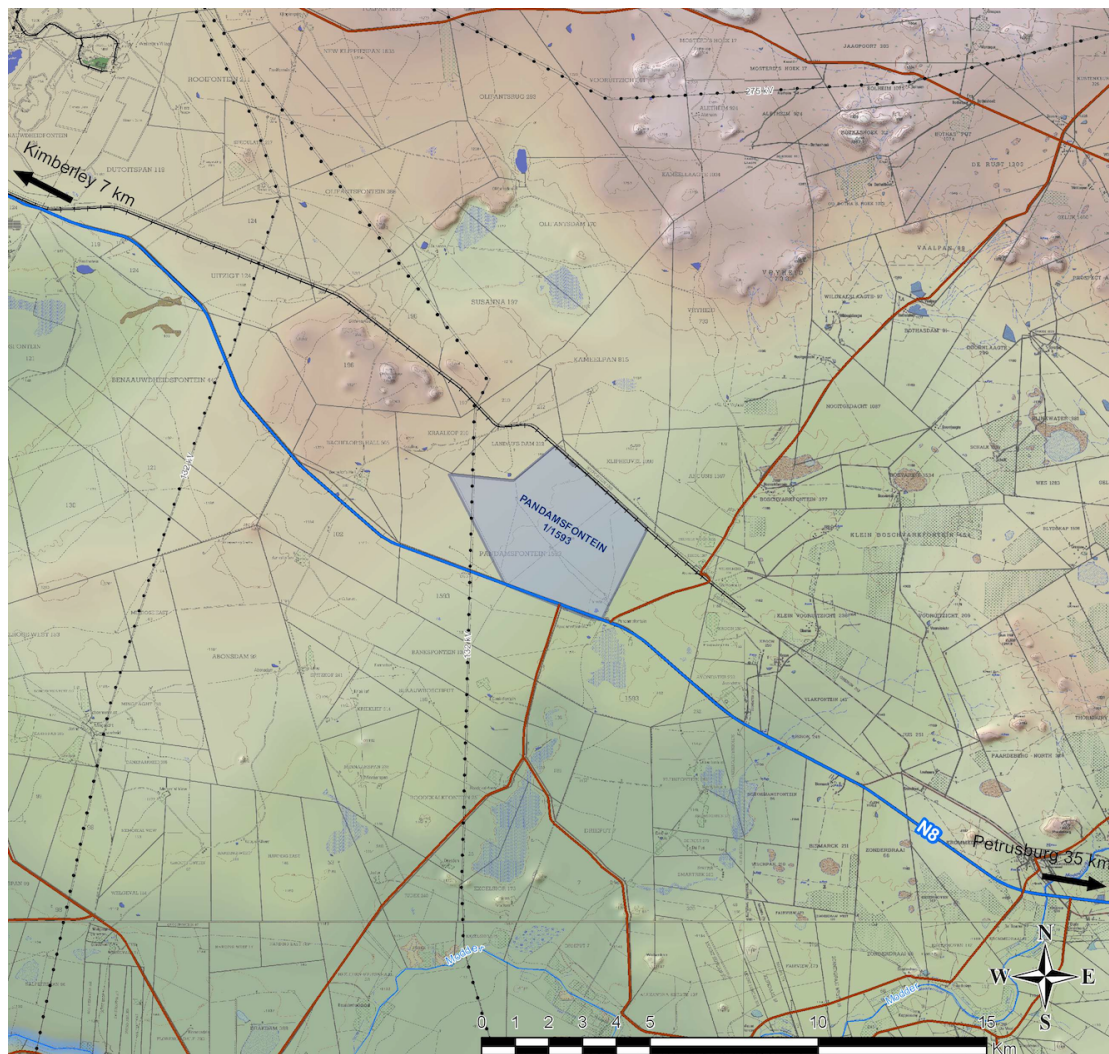


FIGURE 1: BLACKWOOD SEF LOCALITY MAP

3. BASIC DESCRIPTION OF THE FACILITIES

The solar photovoltaic (PV) plant will have a maximum installed capacity of 86.25 Megawatt (MW), with a net AC electrical generating capacity of 75 MW.

The main elements of the Blackwood SEF will be as follows:

- Modules (solar panels),
- Inverters,
- Transformers,
- Medium-voltage grid,
- Transformer Substation, and
- Internal and external roadways.

4. WATER NEEDS AND CONSUMPTIONS

4.1. INTRODUCTION

The estimates are based on two distinct phases, the first one being for the **construction** of the solar energy facility, and the second phase corresponding to the **operation & maintenance** of the installed energy-generating infrastructure.

4.2. CONSTRUCTION PHASE

The **Construction Phase** of the Blackwood SEF is broken down into two categories of requirements, **Sanitation** (drinking, cooking and cleaning) and **Construction Processes**. The construction duration of the SEF is estimated to be 18 months.

4.2.1. SANITATION WATER REQUIREMENTS

It is estimated that there will be approximately 500 workers on site at the peak of the construction period. The average number of construction workers on site per day is estimated to be approximately 250. The United Nations (UN) suggests that a person needs in the region of 20 - 50 Litres of water a day to ensure their basic needs for drinking, cooking and cleaning (UN-Water). The following calculations assume 50 Litres/worker/day with the assumption that **portable chemical toilets** will be used at the construction site.

TABLE 1: CONSTRUCTION SANITATION WATER REQUIREMENTS

Consumption (Litres/worker/day)	Construction Duration	Workers on site	Total Consumption (Litres)	Total Consumption (m ³)
50	540 days	250	6,750,000	6,750

4.2.2. CONSTRUCTION PROCESS WATER REQUIREMENTS

Water consumption during the construction process is associated primarily with the compaction of roads to meet minimum quality requirements. The requirement is estimated to be 50 Litres/m³. A further 250 m³ quantity has been allowed for other general uses such as concrete curing, road maintenance, terrain irrigation etc.

TABLE 2: CONSTRUCTION PROCESS WATER REQUIREMENTS

Construction Process	Consumption (Litres/m ³)	Construction Quantities	Total Consumption (Litres)	Total Consumption (m ³)
Compaction of roads	50 Litres/m ³	35,000 m ³ of granular material	1,750,000	1,750
Others	-	-	-	250
TOTAL				2,000

Note: Recycled water as opposed to potable water may be used for the above construction processes.

4.3. OPERATIONAL PHASE

The **Operational Phase** of the Blackwood SEF is broken down into two categories of requirements, **Sanitation** (drinking, cooking and cleaning) and **Plant Maintenance** (module cleaning and road maintenance & irrigation). The construction duration of the SEF is estimated to be 18 months.

4.3.1. SANITATION WATER REQUIREMENTS

Employment numbers at a solar energy facility depends largely on the extent to which operational processes are automated. For the purpose of these calculations, it is assumed that the Blackwood SEF will employ a maximum of 60 workers at any given point in time during the 20-year operational lifespan of the Plant. The United Nations (UN) suggests that a person needs in the region of 20 - 50 Litres of water a day to ensure their basic needs for drinking, cooking and cleaning (UN-Water). Assuming 50 Litres/worker/day, the total annual consumption during the operational phase of the facility is calculated to be **1,095 m³**.

4.3.2. PLANT MAINTENANCE WATER REQUIREMENTS

Module cleaning

For this purpose it is assumed that the solar PV modules will be cleaned twice per annum. The maximum allowable DC/AC ratio is 1.15. Therefore a plant with a net generating capacity of 75 MW corresponds to a total peak installed capacity of 86.25 MWp. Assuming a module size of 300 Wp, the facility will see 287,500 units installed. The estimated water consumption is calculated in the following table.

TABLE 3: PLANT MAINTENANCE WATER REQUIREMENTS

Quantity (modules)	Area (m ² per module)	Water Consumption (Litres/m ²)	Consumption per Clean (Litres)	Cleans/year	Total Consumption (m ³)
287,500	1.95	3	1,681,875	2	3,364

Road maintenance

It is assumed that 200 m³/year will be required for road maintenance and irrigation purposes.

4.4. WATER STORAGE REQUIREMENTS

It is assumed that potable water will be stored in small water tanks on site. A typical example of such would be a standard JoJo 5,000 Litre water tank measuring 1,820 mm in diameter and 2,100 mm in height.

Grey water and sewerage will be discharged to an approved watertight septic tank system, for collection by authorized agents.

4.5. SUMMARY OF WATER CONSUMPTIONS

The total water consumption estimated for the **Construction Phase** is **8,750 m³**, for the total **18-month construction period**.

The total water consumption estimated for the **Operational Phase** is **4,659 m³ per annum**, for the **20-year operational lifespan** of the SEF.

5. GROUNDWATER AND RAINWATER

5.1. INTRODUCTION

In order to reduce the demand placed on the municipality, the Project will look to use both rainwater and groundwater during the construction and operational phases.

5.2. GROUNDWATER

The proposed Blackwood SEF will be located near Kimberley in the Free State Province. According to Figure 2 below, the area may have a groundwater occurrence of between 0.5 and 2 Litres/second.

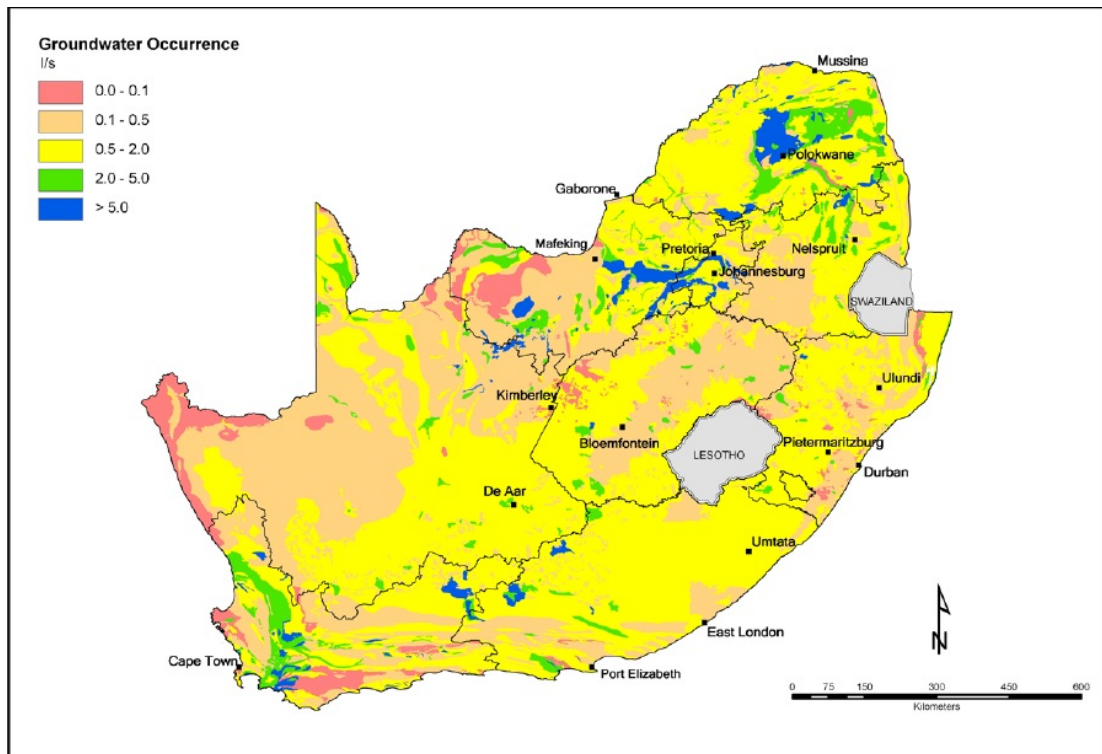


FIGURE 2: GROUNDWATER OCCURENCE IN SOUTH (DEPARTMENT OF WATER AFFAIRS)

The Developer will solicit the services of a consultant to undertake an assessment of groundwater resources that will include hydrocensus and yield test studies. Should borehole extraction prove to be a feasible water supply option for the proposed Blackwood SEF, then the formal processes will commence for registration of the necessary water use license (WUL) applications and the municipality notified accordingly.

5.3. RAINWATER

Figure 3 below (WORLD WEATHER ONLINE) depicts the monthly climate average for Kimberley. The average rainfall over a 12 month period is calculated to be 51 mm. Figure 4 below depicts a mean annual runoff map of South Africa (Biodiversity GIS, 2007) in which it is shown that Kimberley may experience anywhere between 0 – 60 mm/year runoff.

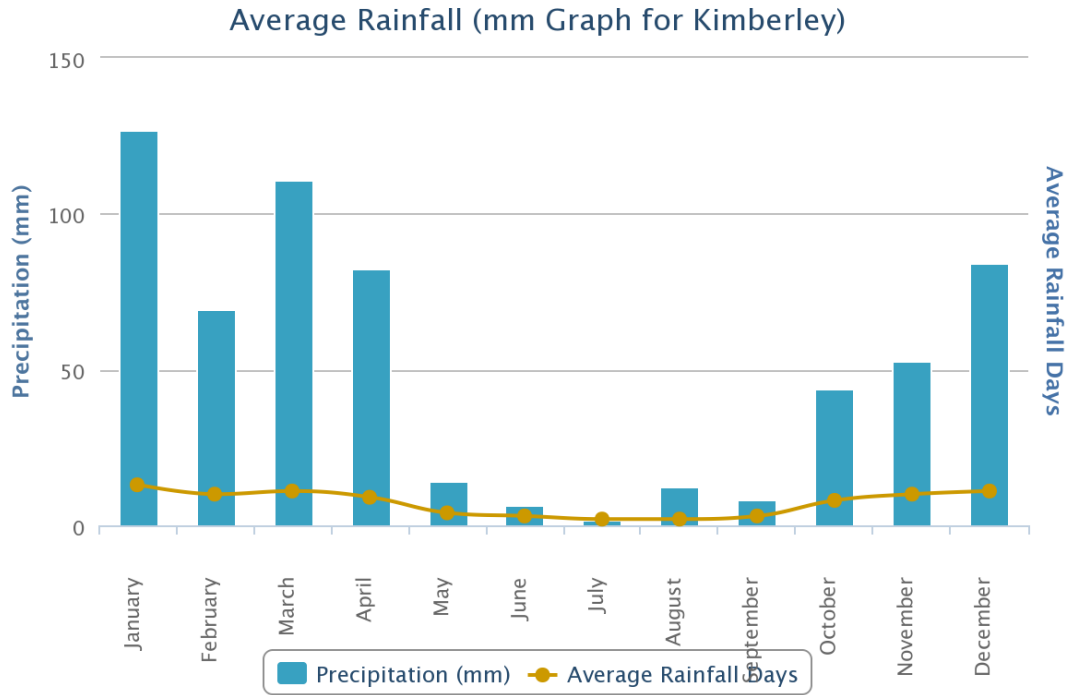


FIGURE 3: KIMBERLEY MONTHLY CLIMATE AVERAGE, SOUTH AFRICA (WORLD WEATHER ONLINE)

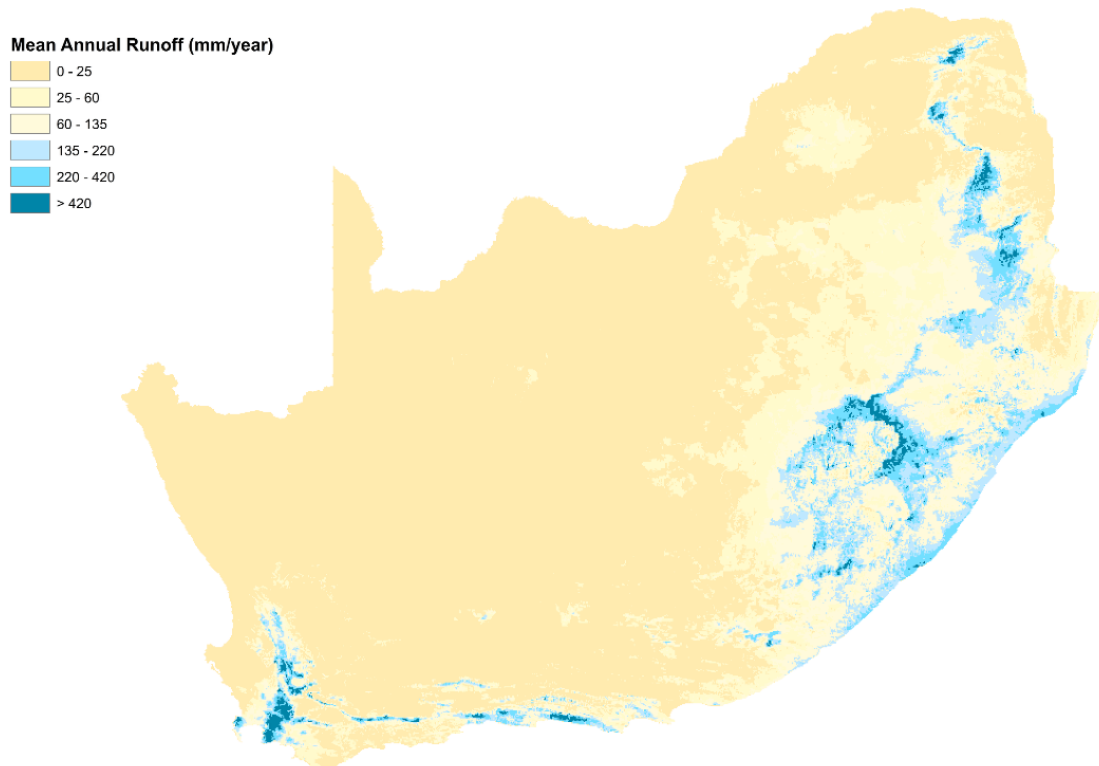


FIGURE 4: MEAN ANNUAL RUNOFF FOR SOUTH AFRICA (BIODIVERSITY GIS, 2007)

5.4. FLOW ESTIMATE

As a minimum it is intended to catch and store rainfall that falls on the roof of the substation building. These calculations are indicative, and are based on the monthly average rainfall of 51 mm.

The Rational Method is used to calculate the rain flow: $Q = C \times I \times A$

Where: **Q** is **Flowrate**
C is the **Coefficient of Runoff**
I is the **Intensity of the storm**, and
A is the **Catchment Area**

For the roof, the coefficient of runoff, **C**, is equal to **1**.

The Intensity of the storm, **I**, is equal to **0.071 mm/hr**.

The dimension of the roof is:

- $b = 33 \text{ m}$; $2a = 8.55 \text{ m}$; $d = 0.6 \text{ m}$, with a total area of $282,15 \text{ m}^2$.



FIGURE 5: WIND EFFECT FORMULA

Taking wind effect into consideration (see Figure 5), the rainfall catchment area, **A**, of the roof is reduced to **151 m²**.

The total flowrate, **Q**, is equal to **0,011 m³/hr**.

Therefore, for an average of 365 days it would be possible to accumulate 92.6 m^3 of rainfall, which meets only 8.5% of the annual sanitation water needs during operation of the solar energy facility, indicating that potable water will need to be trucked in to the facility.

6. LIST OF REFERENCES

UN-Water. (n.d.). *Statistics: Graphs and Maps*. Retrieved January 17, 2014 from UN-Water: http://www.unwater.org/statistics_san.html

Department of Water Affairs. *Groundwater Occurrence*. Eastern Cape Office.

WORLD WEATHER ONLINE. (n.d.). *Kimberley Monthly Climate Average, South Africa*. Retrieved January 20, 2014 from WORLD WEATHER ONLINE: <http://www.worldweatheronline.com/Kimberley-weather-averages/Northern-Cape/ZA.aspx>

Biodiversity GIS. (2007). *Strategic Water Source Areas (SWSA)*. Retrieved January 20, 2014 from Biodiversity GIS: <http://bgis.sanbi.org/NFEPA/SWSAmap.asp>