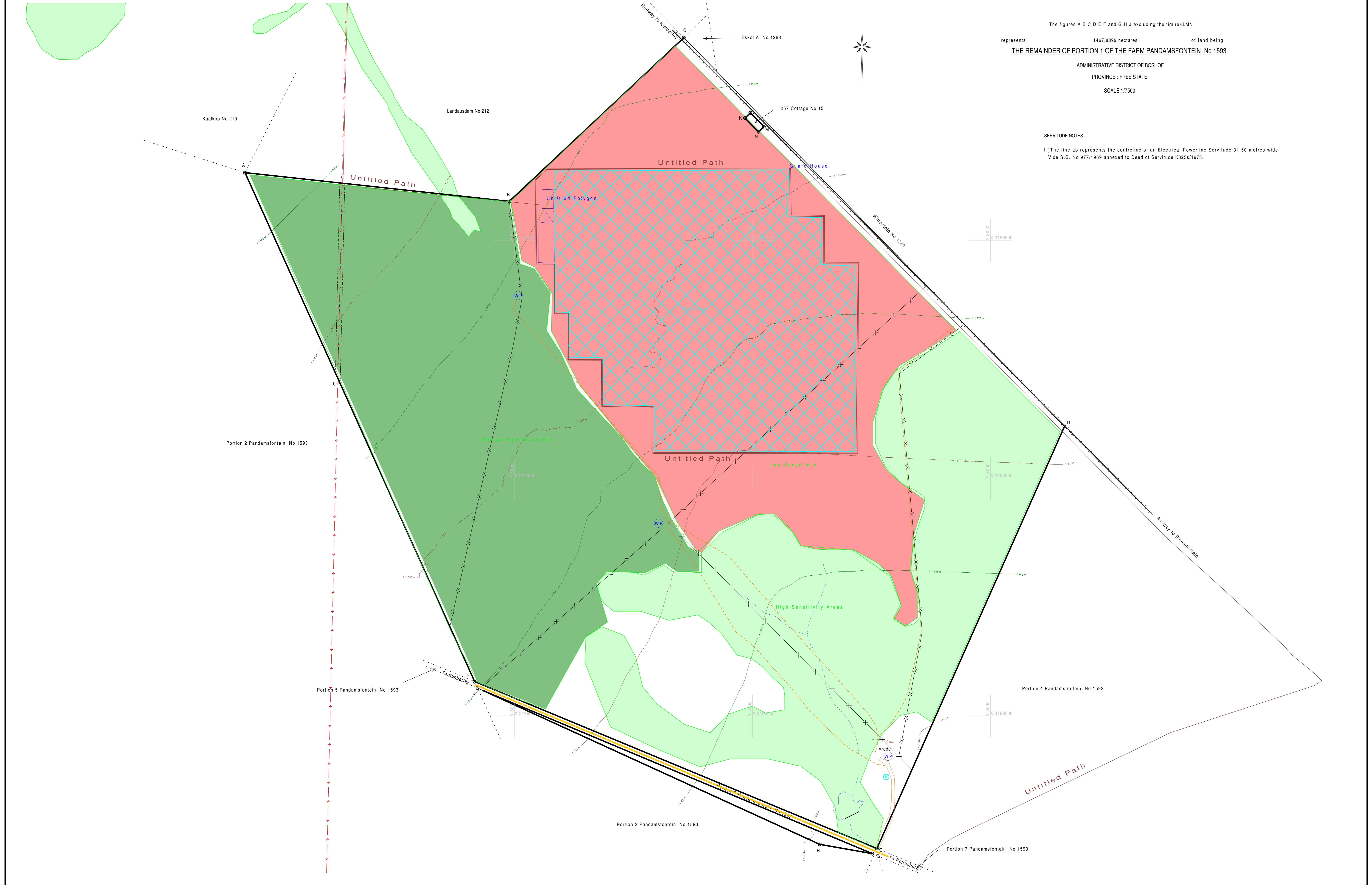


The figures A B C D E F and G H J excluding the figure KLMN  
 represents 1467,8899 hectares of land being  
**THE REMAINDER OF PORTION 1 OF THE FARM PANDAMSFONTEIN No 1593**  
 ADMINISTRATIVE DISTRICT OF BOSHOF  
 PROVINCE : FREE STATE  
 SCALE:1/7500

**SERVITUDE NOTES:**

1.)The line ab represents the centreline of an Electrical Powerline Servitude 31,50 metres wide Vide S.G. No 977/1969 annexed to Deed of Servitude K325s/1973.



No.	DATE	REVISIONS	NOTES	SURVEYOR	Land Surveyors	JOB DESCRIPTION	REFERENCE	PERENNIAL WATER	PLAN NO.
1.	31/03/2014	NO 1	1. Cadastral information supplied by Surveyor-General - Subject to survey. 2. Topographical information as supplied by Survey and Mapping Mowbray-Subject to survey. 3. Contours as supplied by Survey and Mapping Mowbray-Subject to survey. 4. For servitudes see servitude notes.	PJV	<b>VAN DYK LAND SURVEYORS</b>	REMAINDER FARM PANDAMSFONTEIN 1593	<ul style="list-style-type: none"> <li>POWERLINE AS PER ESCOM DATABASE</li> <li>DIRT TRACKS</li> <li>EXTEND OF SERVITUDES</li> <li>NON PERENNIAL RIVER</li> <li>NATIONAL FREEWAY N8</li> <li>FENCH LINE</li> <li>RAILWAY</li> <li>WINDPUMP</li> </ul>	<ul style="list-style-type: none"> <li>PERENNIAL WATER</li> <li>RESERVOIR</li> <li>MEDIUM - HIGH SENSITIVITY</li> <li>HIGH SENSITIVITY</li> <li>LOW SENSITIVITY</li> </ul>	FARM 1593 PORTION 1
				DATE MARCH 2014	E-mail: info@vandyksurvey.co.za Hermanus: Tel:028 313 0077 Fax:028 312 1351 Durbanville: Tel:021 975 5505 Fax:021 975 5505	ADMIN DISTRICT : BOSHOF			SCALE 1:7500
				DATUM WGS25°					
				HEIGHT SYSTEM MSL (MOWBRAY AERIAL)					