


FOLLOW-UP PHASE 1 HERITAGE IMPACT ASSESSMENT (HIA) FOR THE PROPOSED PARKDENE X 7 MIXED USE DEVELOPMENT ON PART OF THE REMAINING EXTENT OF THE FARM LEEUWPOORT IR, BOKSBURG, EKURHULENI METROPOLITAN MUNICIPALITY, GAUTENG PROVINCE

The above report is the result of a revisit of the site earmarked for development and re-evaluation of heritage sites previously identified in a report by: PGS Heritage and Grave Relocation Consultants. (2011). *Phase 1 Heritage Impact assessment for the proposed Leeuwpoot North Development on Remainder, Remainder of Portion 51 and 52 as well as Portion 2 of Portion 22 of the Farm Leeuwpoot 113-IR, Boksburg, Ekurhuleni, Metropolitan Municipality, Gauteng Province.* Unpublished Report.


Leonie Marais-Botes Heritage Practitioner
868 Endeman Street Wonderboom South Pretoria 0084 Mobile: 082 576 6253 E-mail: leoniembotes@gmail.com
<i>BA (Cultural History and Archaeology) (UP), BA (Hons) Cultural History (UP), Post Grad Dip Museology (UP), Cert Conservation of Traditional Buildings (Univ of Canberra) Post Grad Dip: Heritage (Wits)</i>
<i>Accredited member: SA Society for Cultural History (CH002)</i>

For:

**BOKAMOSO LANDSCAPE ARCHITECTS
& ENVIRONMENTAL CONSULTANTS
P.O. BOX 11375
MAROELANA
0161**

March 2017

© Copyright

Leonie Marais-Botes Heritage Practitioner.

The information contained in this report is the sole intellectual property of Leonie Marais-Botes Heritage Practitioner.

It may only be used for the purposes it was commissioned for by the client.

DISCLAIMER:

Although all possible care is taken to identify/find all sites of cultural importance during the initial survey of the study area, the nature of archaeological and historical sites are as such that it is always possible that hidden or sub-surface sites could be overlooked during the study. Leonie Marais-Botes Heritage Practitioner will not be held liable will not be held liable for such oversights or for the costs incurred as a result thereof.

DECLARATION OF INDEPENDENCE:

I, Leonie Marais-Botes declare that;

- I act as an independent specialist in this application.
- I will perform the work relating to the application in an objective matter, even if this results in views and findings that are not favourable to the applicant.
- There are no circumstances that may comprise my objectivity in performing such work.
- I have expertise in conducting the specialist report relevant to the application, including knowledge of the relevant Acts and Regulations.
- I have no, and will not engage in, conflicting interests in the undertaking of the activity.

A photograph of a handwritten signature in black ink on a light-colored background. The signature reads "Leonie Marais-Botes" in a cursive script.

ACKNOWLEDGEMENTS

Australia ICOMOS. *The Burra Charter*.

Bergh, J.S. Geskiedenis Atlas van Suid-Afrika. Die vier Noordelike Provinsies. Van Schaik Uitgewers, 1998.

Beyers C.J. (Editor-in-Chief). Dictionary of South African Biography (Vol I – V). Pretoria, 1987.

Boksburg and East Rand Historical Society. The Early History of Boksburg. www.theheritageportal.co.za/article/early-history-boksburg

Coertze, P.J. & Coertze, R.D. Verklarende vakwoordeboek vir Antropologie en Argeologie. Pretoria, 1996.

Huffman, T.N. A Handbook to the Iron Age: The Archaeology of Pre- Colonial Farming Societies in Southern Africa. University of KwaZulu-Natal Press, 2007

Human Tissues Act (Act 65 of 1983 as amended)

Government Printers. 1: 50 000

National Heritage Resources Act (Act 25 of 1999)

National Environmental Management Act (Act 107 of 1998)

Ordinance on Exhumations (no 12 of 1980)

PGS Heritage and Grave Relocation Consultants. *Phase 1 Heritage Impact assessment for the proposed Leeuwpoort North Development on Remainder, Remainder of Portion 51 and 52 as well as Portion 2 of Portion 22 of the Farm Leeuwpoort 113-IR, Boksburg, Ekurhuleni, Metropolitan Municipality, Gauteng Province*. Unpublished report. 2011.

Potgieter, D.J. (editor-in-chief) Standard Encyclopaedia of Southern Africa. London 1971.

Rosenthal E. (Editor) Encyclopaedia of Southern Africa, 1973

The National Archives of South Africa databases.

Contents page

<u>Contents</u>	<u>Page</u>
ABOUT THIS REPORT	5
DEFINITION OF TERMS	6
EXECUTIVE SUMMARY	9
1. INTRODUCTION	12
1.1 WHY A PHASE 1 HIA IS REQUIRED	12
1.1.1 METHOD	12
1.2 PROPERTY DECSRIPTION	12
1.3 HISTORY OF THE STUDY AREA	13
1.4 LOCATION AND PHOTOGRAPHICAL RECORD OF STUDY AREA	14
2. FINDINGS	17
2.1 Pre-Colonial Heritage Sites	17
2.2 Historical Period Heritage sites	18
2.3 Original Landscape	20
2.4 Intangible Heritage	20
3. CATEGORIES OF HERITAGE VALUE	21
3.1 HERITAGE VALUE WEIGHED AGAINST CULTURAL SIGNIFICANCE CATEGORIES	22
3.2 SPECIFIC CATEGORIES INVESTIGATED AS PER SECTION 3 (1) AND (2) OF THE NATIONAL HERITAGE LEGISLATION (ACT 25 OF 1999)	22
4. PHYSICAL LIMITATIONS	25
5. DISCUSSION	25
6. RECOMMENDATIONS	26
7. WAY FORWARD	27

ABOUT THIS REPORT

The heritage report must reflect that consideration has been given to the history and heritage significance of the study area and that the proposed activities is sensitive towards the heritage resources and does not significantly alter or destroy the heritage significance of the study area.

The heritage report must refer to the heritage resources currently in the study area.

The opinion of an independent heritage consultant is required to evaluate if the proposed work generally follows a good approach that will ensure the conservation of the heritage resources.

The National Heritage Resources Act (Act 25 of 1999), the National Environmental Management Act (Act 107 of 1998), Ordinance on Exhumations (no 12 of 1980) and the Human Tissues Act (Act 65 of 1983 as amended) are the guideline documents for a report of this nature.

Leonie Marais-Botes was appointed by Bokamoso Landscape Architects and Environmental Consultants to carry out a follow-up Phase 1 Heritage Impact Assessment (HIA) for the proposed Parkdene X 7 Mixed Use Development on a part of the Remaining Extent of the Farm Leeuwpoot 113 IR, Boksburg, Ekurhuleni Metropolitan Municipality, Gauteng Province. Site visits took place on 11 November 2016 and 30 March 2017.

The basis of the above study is the original Phase 1 Heritage Impact Assessment prepared by PGS Heritage and Grave Relocation Consultants. (2011). Phase 1 Heritage Impact assessment for the proposed Leeuwpoot North Development on Remainder, Remainder of Portion 51 and 52 as well as Portion 2 of Portion 22 of the Farm Leeuwpoot 113-IR, Boksburg, Ekurhuleni, Metropolitan Municipality, Gauteng Province. Unpublished Report.

DEFINITION OF TERMS:

“alter” means any action affecting the structure, appearance or physical properties of a place or object, whether by way of structural or other works, by painting, plastering or other decoration or any other means.

“archaeological” means—

(a) material remains resulting from human activity which are in a state of disuse and are in or on land and which are older than 100 years, including artefacts, human and hominid remains and artificial features and structures;

(b) rock art, being any form of painting, engraving or other graphic representation on a fixed rock surface or loose rock or stone, which was executed by human agency and which is older than 100 years, including any area within 10m of such representation;

(c) wrecks, being any vessel or aircraft, or any part thereof, which was wrecked in South Africa, whether on land, in the internal waters, the territorial waters or in the maritime culture zone of the Republic, as defined respectively in sections 3, 4 and 6 of the Maritime Zones Act, 1994 (Act No. 15 of 1994), and any cargo, debris or artefacts found or associated therewith, which is older than 60 years or which SAHRA considers to be worthy of conservation; and

(d) features, structures and artefacts associated with military history which are older than 75 years and the sites on which they are found.

“conservation”, in relation to heritage resources, includes protection, maintenance, preservation and sustainable use of places or objects so as to safeguard their cultural significance.

“cultural significance” means aesthetic, architectural, historical, scientific, social, spiritual, linguistic or technological value or significance.

“development” means any physical intervention, excavation, or action, other than those caused by natural forces, which may in the opinion of a heritage authority in any way result in a change to the nature, appearance or physical nature of a place, or influence its stability and future well-being, including—

(a) construction, alteration, demolition, removal or change of use of a place or a structure at a place;

(b) carrying out any works on or over or under a place;

(c) subdivision or consolidation of land comprising, a place, including the structures or airspace of a place;

(d) constructing or putting up for display signs or hoardings;

(e) any change to the natural or existing condition or topography of land; and

(f) any removal or destruction of trees, or removal of vegetation or topsoil; object that is specifically designated by that state as being of importance.

“grave” means a place of interment and includes the contents, headstone or other marker of such a place, and any other structure on or associated with such place.

“heritage resource” means any place or object of cultural significance.

“heritage resources authority” means the South African Heritage Resources Agency, or in respect of a province, a provincial heritage resources authority.

“heritage site” means a place declared to be a national heritage site by SAHRA or a place declared to be a provincial heritage site by a provincial heritage resources authority.

“improvement”, in relation to heritage resources, includes the repair, restoration and rehabilitation of a place protected in terms of Act 25 of 1999.

“living heritage” means the intangible aspects of inherited culture, and may include—

(a) cultural tradition;

- (b) oral history;
- (c) performance;
- (d) ritual;
- (e) popular memory;
- (f) skills and techniques;
- (g) indigenous knowledge systems; and
- (h) the holistic approach to nature, society and social relationships.

“local authority” means a municipality as defined in section 10B of the Local Government Transition Act, 1993 (Act No. 209 of 1993).

“management”, in relation to heritage resources, includes the conservation, presentation and improvement of a place protected in terms of Act 25 of 1999.

“meteorite” means any naturally-occurring object of extraterrestrial origin.

“object” means any movable property of cultural significance which may be protected in terms of any provisions of Act 25 of 1999, including—

- (a) any archaeological artefact;
- (b) palaeontological and rare geological specimens;
- (c) meteorites; and
- (d) other objects.

“palaeontological” means any fossilised remains or fossil trace of animals or plants which lived in the geological past, other than fossil fuels or fossiliferous rock intended for industrial use, and any site which contains such fossilised remains or trace.

“place” includes—

- (a) a site, area or region;
- (b) a building or other structure which may include equipment, furniture, fittings and articles associated with or connected with such building or other structure;
- (c) a group of buildings or other structures which may include equipment, furniture, fittings and articles associated with or connected with such group of buildings or other structures;
- (d) an open space, including a public square, street or park; and
- (e) in relation to the management of a place, includes the immediate surroundings of a place.

“presentation” includes—

- (a) the exhibition or display of;
- (b) the provision of access and guidance to;
- (c) the provision, publication or display of information in relation to; and
- (d) performances or oral presentations related to, heritage resources protected in terms of Act 25 of 1999.

“public monuments and memorials” means all monuments and memorials—

- (a) erected on land belonging to any branch of central, provincial or local government, or on land belonging to any organisation funded by or established in terms of the legislation of such a branch of government; or
- (b) which were paid for by public subscription, government funds, or a public-spirited or military organisation, and are on land belonging to any private individual.

“site” means any area of land, including land covered by water, and including any structures or objects thereon.

“structure” means any building, works, device or other facility made by people and which is fixed to land, and includes any fixtures, fittings and equipment associated therewith.

“victims of conflict” means—

- (a) certain persons who died in any area now included in the Republic as a direct result of any war or conflict as specified in the regulations, but excluding victims of conflict covered by the Commonwealth War Graves Act, 1992 (Act No. 8 of 1992);
- (b) members of the forces of Great Britain and the former British Empire who died in active service in any area now included in the Republic prior to 4 August 1914;
- (c) persons who, during the Anglo-Boer War (1899-1902) were removed as prisoners of war from any place now included in the Republic to any place outside South Africa and who died there; and
- (d) certain categories of persons who died in the “liberation struggle” as defined in the regulations, and in areas included in the Republic as well as outside the Republic.

EXECUTIVE SUMMARY

A previous report concerning the site earmarked for development was drafted in 2011 by PGS Heritage and Grave Relocation Consultants titled *Phase 1 Heritage Impact assessment for the proposed Leeuwpoot North Development on Remainder, Remainder of Portion 51 and 52 as well as Portion 2 of Portion 22 of the Farm Leeuwpoot 113-IR, Boksburg, Ekurhuleni, Metropolitan Municipality, Gauteng Province.*

In the above mentioned report the following heritage sites were identified in the immediate and greater study area:



Figure 1: Heritage sites identified in the immediate and greater study area

The sites are referred to as follow in the 2011 report:

Table 1: Heritage sites in the immediate and greater study area referral codes

Site No.	Coordinates	
LPT-1	26°13'57.60"S	28°14'45.29"E
LPT-2	26°13'53.77"S	28°14'44.21"E
LPT-3	26°14'7.09"S	28°14'46.46"E
LPT-4	26°13'36.17"S	28°14'40.07"E
LPT-5	26°13'29.77"S	28°14'46.20"E
LPT-6	26°13'26.16"S	28°13'37.88"E
LPT-7	26°13'31.89"S	28°13'37.86"E
LPT-8	26°13'39.22"S	28°14'18.23"E

- **Concentration Camp**
- **Oak Trees**
- **LPT 1 Cinderella Deep Compound**
- **LPT 2, 3, 6 and 7**
- **LPT 2 Hospital**
- **LPT 3 Old Mission**
- **LPT 4 Rubbish Dump 5m high and 20m wide (glass, metal, bone)**
- **LPT 5 Cinderella Goldmine Shaft**
- **LPT 6 House North of Central Compound**
- **LPT 7 Central Compound**
- **LPT 8 Sub Power Station and Dwelling (Victoria Falls Power Co)**

As the above mentioned unpublished report was prepared in 2011 and several years have passed Leonie Marais-Botes Heritage Practitioner was requested by Bokamoso Landscape Architects and Environmental Consultants to revisit the site and conduct a more recent Phase 1 Heritage Impact Assessment (HIA) for the proposed Parkdene X 7 Mixed Use Development on a part of the Remaining Extent of the Farm Leeuwpoort 113 IR, Boksburg, Ekurhuleni Metropolitan Municipality, Gauteng Province.

Please note LPT - 6 and 7 and the approx. location of the Black Concentration Camp site are excluded in this report as it will not form part of this development.

A field survey was conducted after which a survey of literature was undertaken.

Heritage sites are situated on/near the site earmarked for development.

It should be noted that the sub-surface archaeological and/or historical deposits and graves are always a possibility. Care should be taken during any work in the entire area and if any of the above is discovered, an archaeologist/heritage practitioner should be commissioned to investigate.

1. INTRODUCTION

The proposed project is for the establishment of a township to be known as Parkdene Extension 7, south and west of Rondebult Road, to serve as residential development, on part of the remaining extent of the Farm Leeuwpoot 113 IR, Boksburg, Gauteng by the Developer – Leeuwpoot Developments (Pty) Ltd, in collaboration with Ekurhuleni Metropolitan Municipality.

The proposed mixed-use development will comprise of the following land uses; Residential 3, Residential 4, Special for community facility, Industrial 2, Business 2, Community Facility, Public Services, Transportation, and Public Open Space.

1.1 WHY A PHASE 1 HERITAGE IMPACT ASSESSMENT IS REQUIRED?

This project may potentially impact on any types and ranges of heritage resources that are outlined in Section 3 of the National Heritage Resources Act (Act 25 of 1999). Subsequently a Phase 1 Heritage Impact Assessment (HIA) was commissioned by Bokamoso Landscape Architects and Environmental Consultants and conducted by Leonie Marais-Botes.

1.1.1 METHOD

The objective of this Phase 1 Heritage Impact Assessment (HIA) was to gain an overall understanding of the heritage sensitivities of the area and indicate how they may be impacted on through development activities. site surveys took place on 11 November 2016 and 30 March 2017.

In order to establish heritage significance the following method was followed:

- Investigation of primary resources (archival information)
- Investigation of secondary resources (literature and maps)
- Physical evidence (site investigation)
- Determining Heritage Significance.

1.2 PROPERTY DESCRIPTION

Part of the remaining extent of the Farm Leeuwpoot 113 IR, Boksburg, Ekurhuleni Metropolitan Municipality, Gauteng Province.

1.3 HISTORIY OF THE STUDY AREA

Boksburg (a town on the East Rand) was established in 1903 and named after the State Secretary of the “Zuid-Afrikaansche Republiek” (South African Republic), Dr W.E. Bok. Noted for its gold mines and for its lake, which is a popular pleasure resort¹.

Before 1860, the municipal area currently known as Boksburg and its immediate surroundings comprised mainly of the farms Leeuwpoot, Klippoortje, Klipfontein and Driefontein. Carl Ziervogel obtained the farm Leeuwpoot for £75 in 1875. In September 1886 Pieter Killian, a young prospector, discovered quartz reefs on Leeuwpoot and Vogelfontein, named after Adolf Vogel. Samples of the quartz were sent to Pretoria for assessment, which confirmed the presence of gold. The result was the proclamation, on the 10th March 1887, of the two farms as public diggings. Carl Ziervogel, who had been trying to sell Leeuwpoot, now opened the first gold mine on the East Rand, the Ziervogel Gold Mining Company.

It soon transpired that heavy expenditure was necessary for development, and as the Directors were unable to finance this, the mine closed down. Mr Abe Bailey of the Barnato Group, which owned the Johannesburg Consolidated Investment Company (JCI), bought the farm Leeuwpoot in 1894 for £100,000. The mynpacht was controlled by JCI. who established East Rand Proprietary Mines (E.R.P.M. Ltd)².

¹ E. Rosenthal (Editor), *Encyclopaedia of Southern Africa*, p.68.

²Boksburg and East Rand Historical Society, [The Early History of Boksburg @ www.theheritageportal.co.za/article/early-history-boksburg](http://www.theheritageportal.co.za/article/early-history-boksburg).

1.4 LOCATION AND PHOTOGRAPHIC RECORD OF STUDY AREA

The proposed development is situated 300m south of the Boksburg CBD and to the west of Parkdene and north of Farrar Park, and is bordered by Rondebult Road to the north and east. The Cinderella Dam borders the site to the south and a non-perennial stream runs past the site on the western boundary. On a regional scale the proposed development is situated approximately 8km east of Germiston, 1.8km north of N17 and 6.9km south of the N12 within the Boksburg Mining Belt.

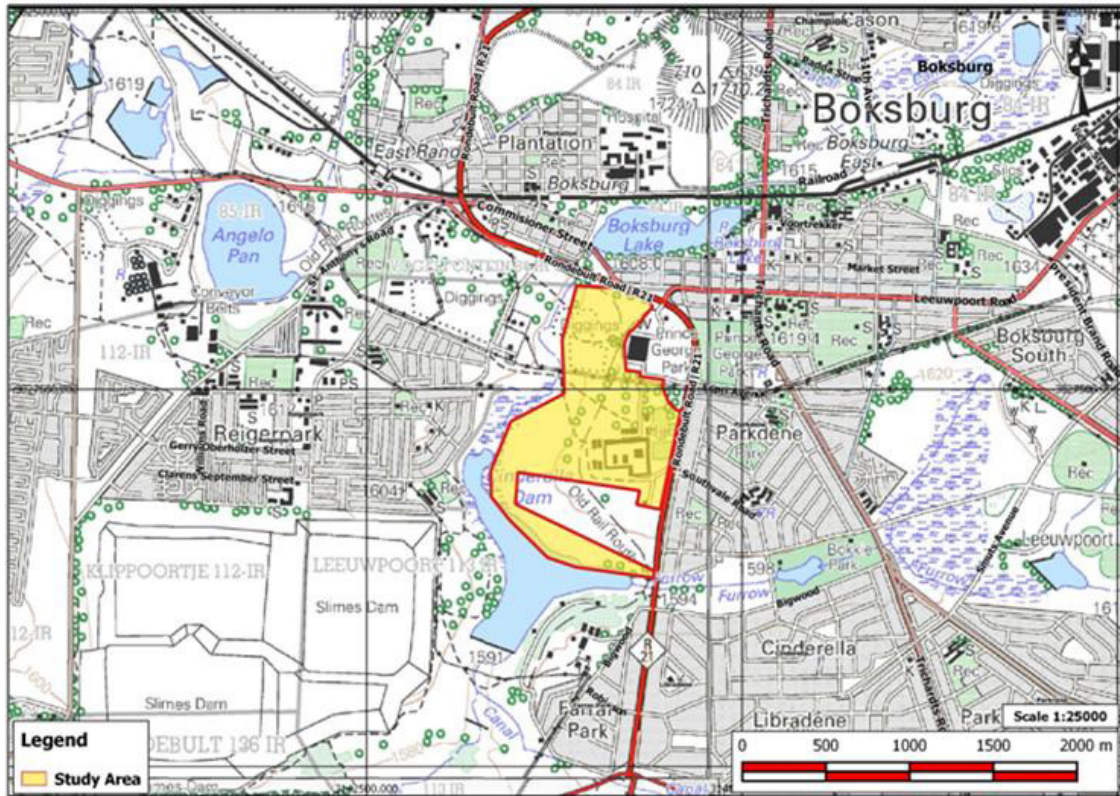


Figure 2: Locality map



Figure 3: Locality Map



Figure 4: Site earmarked for development: Photograph taken from Middel Road towards the south



Figure 5: Site earmarked for development: Photograph taken from Middel Road towards the north



Figure 6: Site earmarked for development: Photograph taken from Checkers Hyper to the west



Figure 7: Site earmarked for development. Photograph taken towards the north

2. FINDINGS

2.1 PRE-COLONIAL HERITAGE SITES

Possibilities: Greater study area taken into account.

Stone Age

The Stone Age is the period in human history when stone material was mainly used to produce tools³. In South Africa the Stone Age can be divided in three periods⁴;

- Early Stone Age 2 000 000 – 150 000 years ago
- Middle Stone Age 150 000 – 30 000 years ago
- Late Stone Age 40 000 years ago - +/- 1850 AD

Iron Age

The Iron Age is the period in human history when metal was mainly used to produce artefacts⁵. In South Africa the Iron Age can be divided in three periods;

- Early Iron Age 250-900 AD
- Middle Iron Age 900-1300 AD
- Late Iron Age 1300-1840 AD⁶

³ P. J. Coertze & R.D. Coertze, Verklarende vakwoordeboek vir Antropologie en Argeologie.

⁴ S.A. Korsman & A. Meyer, *Die Steentydperk en rotskuns* in J.S. Bergh (red) Geskiedenisatlas van Suid-Afrika. Die vier noordelike provinsies.

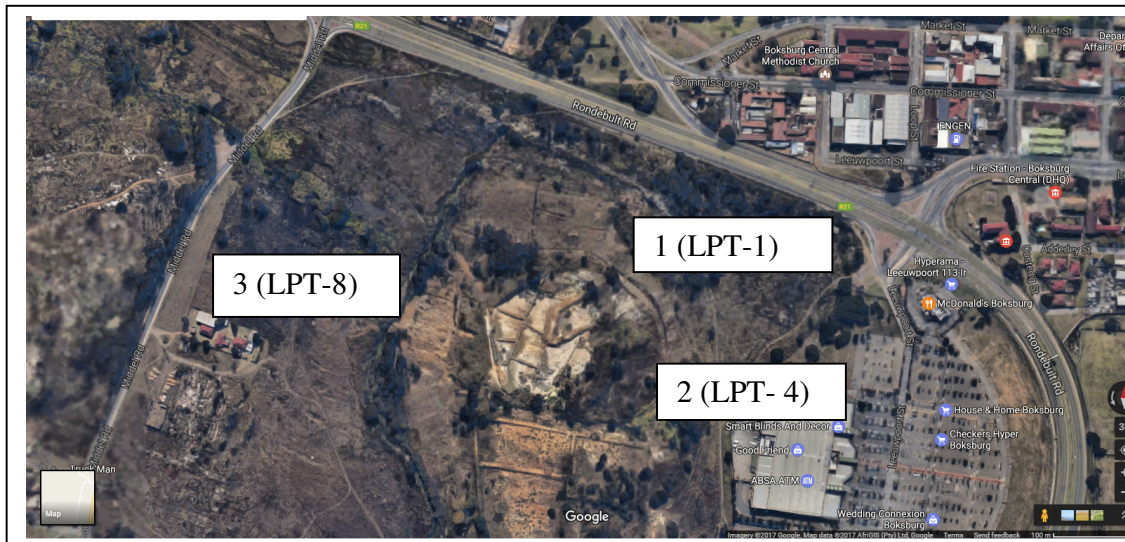
⁵ P.J. Coertze & R.D. Coertze, Verklarende vakwoordeboek vir Antropologie en Argeologie.

There are no pre-colonial heritage sites evident in the study area. This can be attributed to previous infrastructure development activities in the study area.

2.2 HISTORICAL PERIOD HERITAGE SITES

Possibilities: Greater study area taken into account.

- Pioneer sites;
 - Sites associated with early mining;
 - Sites associated with the South African War (1899-1902);
 - Structures older than 60 years;
 - Graves (Graves younger than 60 years, graves older than 60 years, but younger than 100 years, graves older than 100 years, graves of victims of conflict or of individuals of royal descent).
-
- *Structures older than 60 years are situated in the area earmarked for development.*
 - *A rubbish dump is situated in the area earmarked for development.*



**Figure 8: Heritage sites: Northern section: 1) Cinderella Gold Mine Shaft; 2) Rubbish Dump
3) Structures older than 60 years**

⁶ M.M. van der Ryst & A Meyer. *Die Ystertydperk* in J.S. Bergh (red) *Geskiedenisatlas van Suid-Afrika. Die vier noordelike provinsies* and T.N Huffman, *A Handbook to the Iron Age: The Archaeology of Pre-Colonial Farming Societies in Southern Africa*.

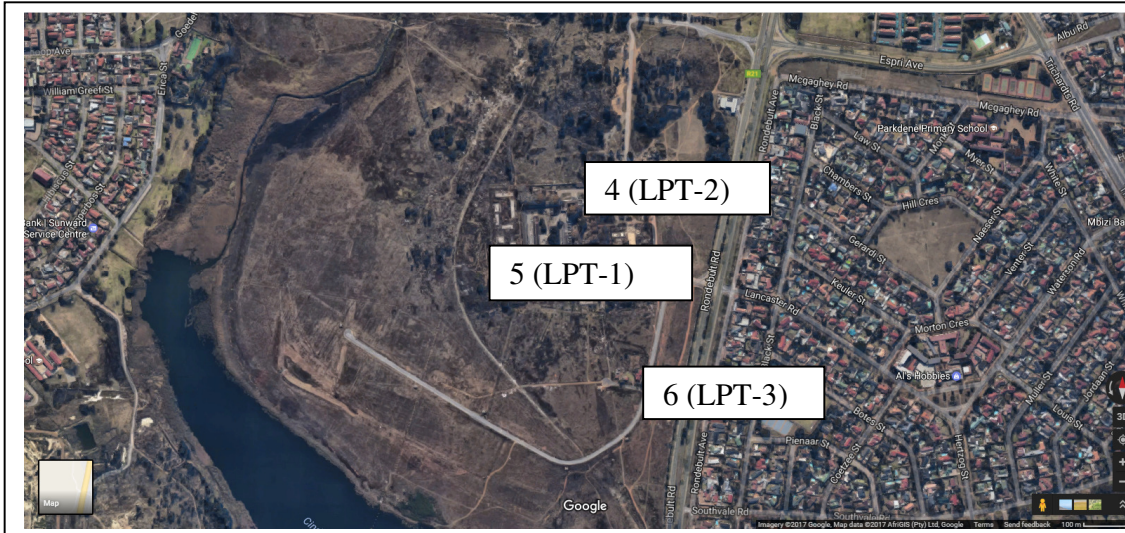


Figure 9: Heritage sites: Southern section: 4) Hospital; 5) Cinderella Deep Compound; 6) Mission



Figure 10: Location 3 (LPT-8): Structures older than 60 years



Figure 11: Location 4: Hospital site (LPT-2)



Figure 12: Location 6: Mission (LPT-3)

During the Public Participation Process (PPP) the possibility of the original Kv transmission pylons associated with the Brakpan and bantjies transmission line still existing was brought to the attention of the Environmental Assessment Practitioner (EAP).

2.3 ORIGINAL LANDSCAPE

Previous infrastructure development attempts have altered the original landscape in the study area.

2.4 INTANGIBLE HERITAGE

The intangible heritage of the greater study area can be found in the stories of past and present inhabitants.

3 CATEGORIES OF HERITAGE VALUE (ACT 25 OF 1999)

The National Heritage Resources Act (Act 25 of 1999) identifies the following categories of value under section 3(1) and (2) of the Act under the heading "National Estate":

- "3 (1) For the purpose of this Act, those heritage resources of South Africa which are of cultural significance or other special value for the present community and for future generations must be considered part of the national estate and fall within the sphere of operations of heritage resources authorities.
- (2) Without limiting the generality of subsection (1), the national estate may include-
- (a) places, buildings, structures and equipment of cultural significance;
 - (b) places which oral traditions are attached or which are associated with living heritage;
 - (c) historical settlements and townscapes;
 - (d) landscapes and natural features of cultural significance;
 - (e) geological sites of scientific or cultural importance;
 - (f) archaeological and palaeontological sites;
 - (g) graves and burial grounds, including-
 - (i) ancestral graves;
 - (ii) royal graves and graves of traditional leaders;
 - (iii) graves of victims of conflict;
 - (iv) graves of individuals designated by the Minister by notice in the Gazette
 - (v) historical graves and cemeteries; and
 - (vi) other human remains which are not covered in terms of the Human Tissue Act, 1983 (Act No. 65 of 1983);
 - (h) sites of significance relating to the history in South Africa;
 - (i) movable objects, including-
 - (i) objects recovered from the soil or waters of South Africa including archaeological and palaeontological objects and material, meteorites and rare geological specimens;
 - (ii) objects to which oral traditions are attached or which are associated with living heritage;
 - (iii) ethnographic art and objects;
 - (iv) military objects
 - (v) objects of decorative or fine art;
 - (vi) objects of scientific or technological interests; and
 - (vii) books, records, documents, photographic positives and negatives, graphic, film or video material or sound recordings, excluding those that are public records as defined in section I (xiv) of the National Archives of South Africa Act, 1996 (Act No. 43 of 1996).
- (3) Without limiting the generality of the subsections (1) and (2), a place or object is to be considered part of the national estate if it has cultural significance or other special value because of-
- (a) Its importance in the community, or pattern of South Africa's history;
 - (b) Its possession of uncommon, rare or endangered aspects of South Africa's natural or cultural heritage;
 - (c) Its potential to yield information that will contribute to an understanding of South Africa's natural or cultural heritage;
 - (d) Its importance in demonstrating the principal characteristics of a particular class of South Africa's natural or cultural objects;
 - (e) Its importance in exhibiting particular aesthetic characteristics valued by a community or cultural group;
 - (f) Its importance in demonstrating a high degree of creative or technical achievement at a particular period;

- (g) Its strong or special association with a particular community or cultural group for social, cultural or spiritual reasons;
- (h) Its strong or special association with the life and work of a person, group or organisation of importance in the history of South Africa; and
- (i) Sites of significance relating to the history of slavery in South Africa.”

3.1 HERITAGE VALUE OF WEIGHED AGAINST CULTURAL SIGNIFICANCE CATEGORIES

3.1.1 Spiritual value

During the site visit/field work no spiritual activity was observed in the study area.

3.1.2 Scientific value

The Cinderella Gold Mine Shaft can be regarded as of scientific significance.

3.1.3 Historical value

The site is associated with historical mining activities.

3.1.4 Aesthetic value

No heritage item with exceptional aesthetic (architectural) value was identified in the study area.

3.1.5 Social value

Social value is attributed to heritage sites that are used by the community for recreation and formal and informal meetings regarding matters that are important to the community. These sites include parks, community halls, sport fields etc. None of the said evident in the immediate study area.

3.2 SPECIFIC CATEGORIES INVESTIGATED AS PER SECTION 3 (1) AND (2) OF THE NATIONAL HERITAGE LEGISLATION (ACT 25 OF 1999)

3.2.1 Does the site/s provide the context for a wider number of places, buildings, structures and equipment of cultural significance?

The study area does provide context for a wider number of places, buildings, structures and equipment of cultural significance. The site earmarked for development is part of an historic mining area.

3.2.2 Does the site/s contain places to which oral traditions are attached or which are associated with living heritage?

Places to which oral traditions are attached or associated with living heritage are usually found in conjunction with traditional settlements and villages which still practise age old traditions. None of these are evident near or on the proposed site.

3.2.3 Does the site/s contain historical settlements?

No historical settlements are located on or near the proposed site.

3.2.4 Does the site/s contain landscapes and natural features of cultural significance?

Due to infra-structure development and farming activities the original character of the landscape has been altered significantly in the study area. The site does not contain natural features of cultural significance.

3.2.5 Does the site/s contain geological sites of cultural importance?

Geological sites of cultural importance include meteorite sites (Tswaing Crater and Vredefort Dome), fossil sites (Karoo and Krugersdorp area), important mountain ranges or ridges (Magaliesburg, Drakensberg etc.). The proposed site is not located in an area known for sites of this importance.

3.2.6 Does the site/s contain a wide range of archaeological sites?

The proposed site does not contain a wide range of surface archaeological deposits, a possible reason is previous infra-structure development in the greater study area.

The possibility of sub-surface findings always exists and should be taken into consideration in the Environmental Management Plan.

If sub-surface archaeological material is discovered work must stop and a heritage practitioner preferably an archaeologist contacted to assess the find and make recommendations.

3.2.7 Does the site/s contain any marked graves and burial grounds?

The site does not contain any marked graves or burial grounds.

The possibility of graves not visible to the human eye always exists and this should be taken into consideration in the Environmental Management Programme.

It is important to note that all graves and cemeteries are of high significance and are protected by various laws. Legislation with regard to graves includes the National Heritage Resources Act (Act 25 of 1999) whenever graves are 60 years and older. Other legislation with regard to graves includes those when graves are exhumed and relocated, namely the Ordinance on Exhumations (no 12 of 1980) and the Human Tissues Act (Act 65 of 1983 as amended).

If sub-surface graves are discovered work should stop and a professional preferably an archaeologist contacted to assess the age of the grave/graves and to advise on the way forward.

3.2.8 Does the site/s contain aspects that relate to the history of slavery?

This is not an area associated with the history of slavery like the Western Cape Province.

3.2.9 Can the place be considered as a place that is important to the community or in the pattern of South African history?

In primary and secondary sources the proposed site is described as important to the community or in the pattern of South African history.⁷ Comment in this regard was received during the Public Participation Process.

3.2.10 Does the site/s embody the quality of a place possessing uncommon or rare endangered aspects of South Africa's natural and cultural heritage?

The proposed site does not possess uncommon, rare or endangered aspects of South Africa's natural and cultural heritage. These sites are usually regarded as Grade 1 or World Heritage Sites.

3.2.11 Does the site/s demonstrate the principal characteristics of South Africa's natural or cultural places?

The proposed site does not demonstrate the principal characteristics of South Africa's natural or cultural places. These characteristics are usually associated with aesthetic significance.

3.2.12 Does the site/s exhibit particular aesthetic characteristics valued by the community or cultural groups?

This part of the greater study area does not exhibit particular aesthetic characteristics valued by the community or cultural groups.

3.2.13 Does the site/s contain elements, which are important in demonstrating a high degree of creative technical achievement?

The site does not contain elements which are important in demonstrating a high degree of creative technical achievement. Reason being none of the above are evident on site.

3.2.14 Does the site/s have strong and special associations with particular communities and cultural groups for social, cultural and spiritual reasons?

The proposed site does have a special association with the community for cultural reasons. Comment in this regard was received during the public participation period. See 5. of this report.

⁷ Standard Encyclopaedia of Southern Africa and the TAB database at the National Archives of South Africa;

J.S. Bergh (red), Geskiedenisatlas van Suid-Afrika. Die Vier Noordelike Provinsies.

3.2.15 Does the site/s have a strong and special association with the life or work of a person, group or organisation?

The site has a strong and special association with the East Rand Proprietary Mines (E.R.P.M.) Ltd group.

4. PHYSICAL LIMITATIONS

- *Dense vegetation in certain sections.*
- *Not secure.*

5. DISCUSSION

Five sites of cultural significance were identified on the site earmarked for development:

- Cinderella Compound (biggest section of the compound already demolished);
- Hospital;
- Mission Station;
- Historic Rubbish Dump (limited potential to yield new scientific information; and
- Cinderella Deep Mine Shaft (only foundations still visible)
- LPT-8 Structures older than 60 years (limited significance)

Table 2: issues and Impact – Cultural History

	Issue/Impact	Positive/negative/Neutral +/-	Mitigation Possible (Yes/No)
1)	Preservation and memorialisation of historic structures and trees identified on site	-	Yes
2)	Preservation of mining history associated with the Proposed Development Site	-	Yes

6. RECOMMENDATIONS

1) Preservation and Memorialisation of Historic Structures and Trees Identified on Site

- Hospital and Mission Station to be preserved and that a Heritage Management Plan be compiled for the study area;
- The Old Oak Trees associated with the Cinderella Compound be incorporated into the Proposed Development Layout; and
- Original 40Kv transmission pylons associated with the Brakpan and Bantjies transmission line be protected and memorialised.

Mitigation Measures to be included in the Environmental Management Programme (EMP)

Planning Phase

- Compile a Heritage Management Plan for the study area to preserve the site's mining history;
- Incorporate Old Oak Trees as part of the Proposed Development Layout; and
- Protect and memorialise any of the historic 40Kv transmission line pylons remaining.

Construction Phase

- Barricade all sites identified for preservation and memorialisation.

2) Preservation and Mining History Associated with the Site

Planning Phase

- Compile a Heritage Management Plan for the study area to preserve the site's mining history. In cases where the historical sites are associated with pollution (i.e. if there is some radioactivity or chemical pollution detected) it is advise to rather demolish such structures and cover the area with concrete. People and children tend to explore old structures and ruins on a site and in most cases they are not aware of any structural or pollution dangers associated with such structures. This is currently the case in the specific stud area.

7. WAY FORWARD

- ***Submit this report as a Section 38 Application in terms of Act 25 of 1999 (National Heritage Resources Act) to the Provincial Heritage Resources Authority of Gauteng (PHRAG).***