

FWJK

SIR LOWRY SQUARE

RESIDENTIAL

RETAIL

HOTEL

CAPE TOWN

DURBAN

JOHANNESBURG

EAST LONDON

LONDON UK

SLS

SIR LOWRY SQUARE

Sir Lowry Square is an energizing new mixed-use development to be built on the verge of Cape Town's CBD and the up and coming neighbourhood that is receiving a lot of attention and regeneration, Woodstock. Located at 130 Sir Lowry Road, the development will discover itself amid other renowned developments and public points of interest to boast centralization and everyday convenience.

Once complete, Sir Lowry Square will be a timeless architectural classic, ensuring an attractive and secure mixed-use development. It will provide an opportunity for investors to own apartments, hotel space, or retail shopping centre at cost price, without having to pay the premium of a conventional developer's profit.

This 20,000m² 8-storey building will consist of:

- 5,500 m² of prime convenient retail
- 203 key international-group hotel
- 195 residential units ranging from 26 m² trendy studio apartments to a spacious 170 m² 3-bedroom duplex penthouse

24/7 Manned security for residential, hotel and retail with secure access to the double basement parking levels to ensure peace of mind for all owners and tenants.

Sir Lowry Square is within easy walking distance to all public transport services, such as MyCiTi 'Cape Town Russel - 261' Bus route, the 'Woodstock' train station and dedicated taxi / Uber drop off parking embayments.

At ground and first level, the development will comprise of a lifestyle orientated retail shopping experience hosting restaurant, coffee shops and national anchor retailers to provide a convenient and socially-enhanced living.



ARCHITECTURAL DESCRIPTION

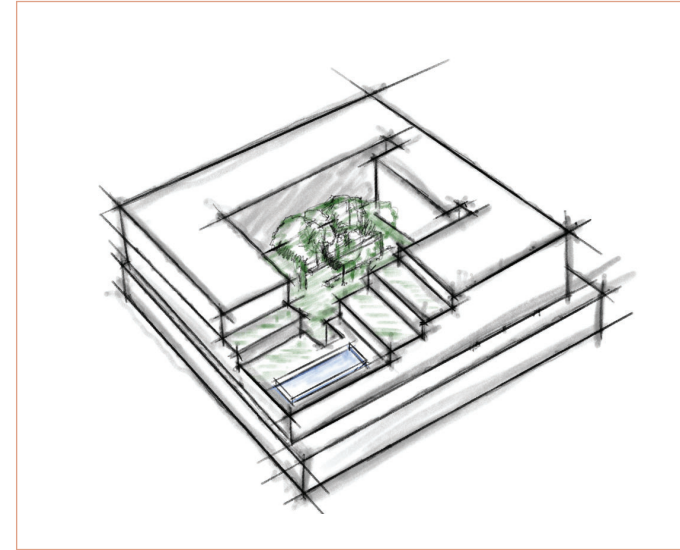
Sir Lowry Square is a key catalyst for sensitive mix-use development along Sir Lowry Road that will become pivotal for future developments on the outskirts of the city bowl towards Woodstock.

Located on Sir Lowry Road between Russel Street, Basket Lane and Francis Street, it will enjoy 360° views of Cape Town CBD, the harbour, Lions Head, Table Mountain and Devils Peak.

The conceptual massing of the architecture is broken down and articulated in response to the finer grain of the surrounding context. The main façade on Sir Lowry Road is setback from the street edge thus creating a large terraced platform which facilitates the flow of pedestrian movement and enhances the public street edge which forms part of the gateway corridor into the city. The North East corner has been reduced in height to allow sunlight to penetrate the inner courtyard, hotel rooms and residential apartments, whilst providing protection from the strong South Easterly winds. A void in the landscaped pet-friendly courtyard allows natural light to filter into the development retail space through a large double volume atrium. Articulation of the vertical form through step backs reduces the visual scale of the building and creates platforms for entertainment areas and rooftop terraces.

Sir Lowry Square not only prides itself on its unique location, but also takes advantage as a corner site, with a grand off-street retail entrance, restaurant and coffee shops along the front façade creating an interactive and engaging pedestrian street edge – all contributing towards forming a key node within the greater Woodstock Precinct.

The Development comprises of; two levels of Basement parking which provides sufficient parking bays for the retail, hotel and residential components of the scheme. The upper portion of the building consists of a split between Standard Residential Apartments and a Hotel component with separate entrances on opposite sides of the building. The residential component further benefits from a private Rooftop Pool and Braai Terrace area.





SIR LOWRY SQUARE









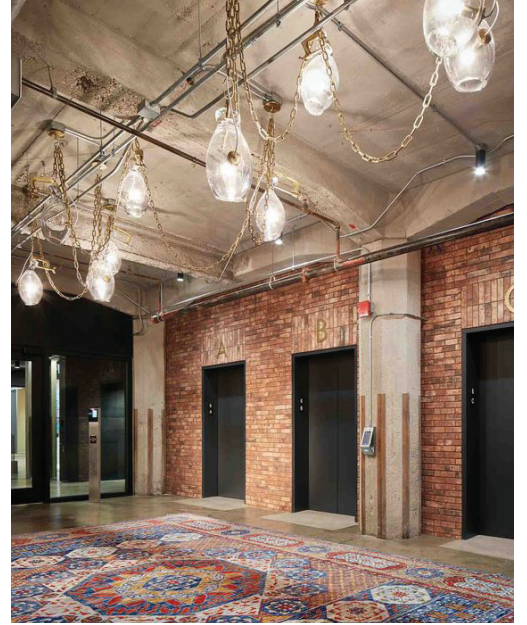
SKYLIGHT



PATTERNED FLOORING



PLANTERS & PUBLIC FURNITURE



FACEBRICK LIFT SHAFTS



BESPOKE SIGNAGE



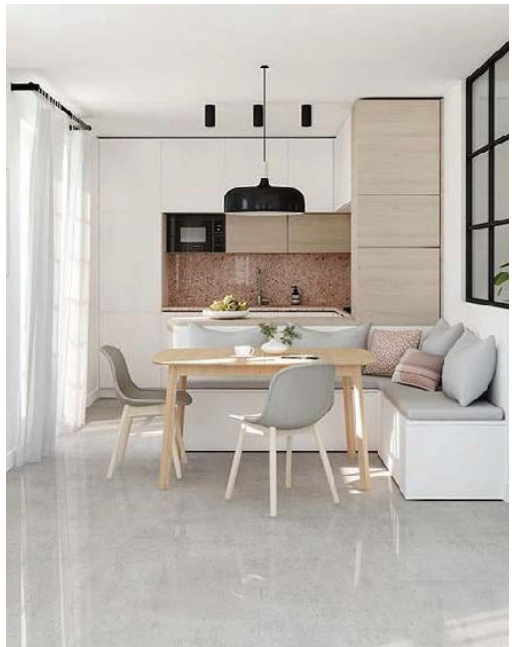
MINIMALIST BATHROOM DESIGN

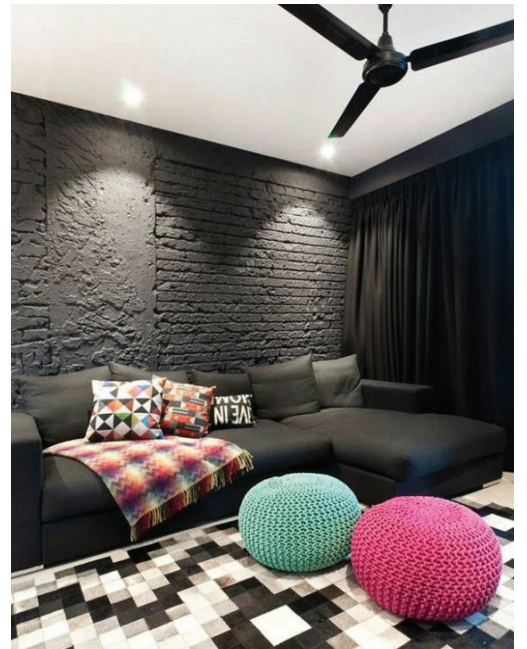
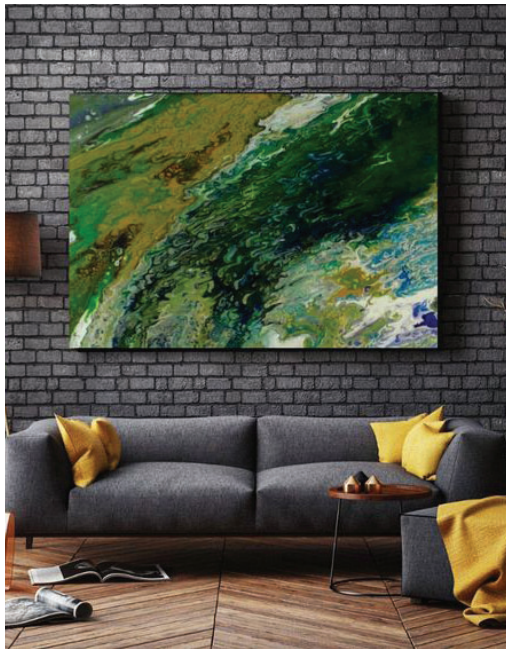
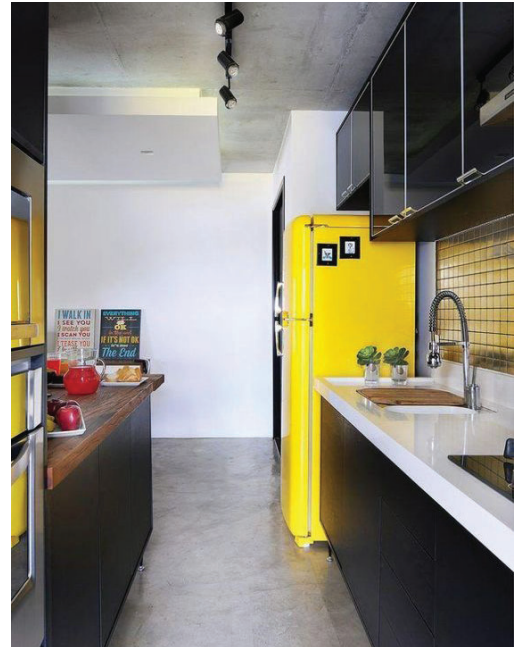
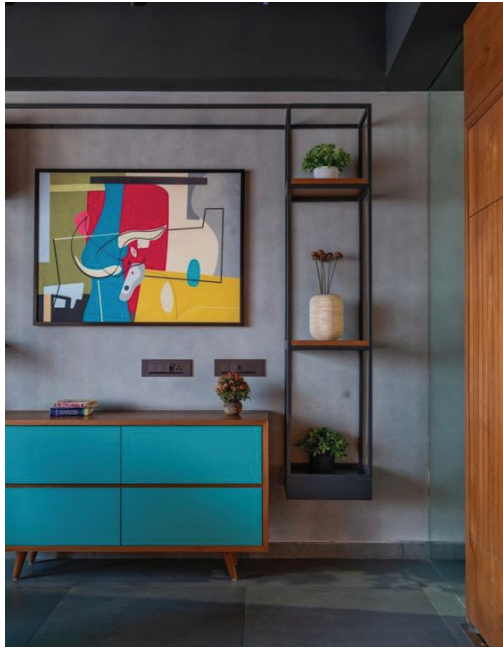


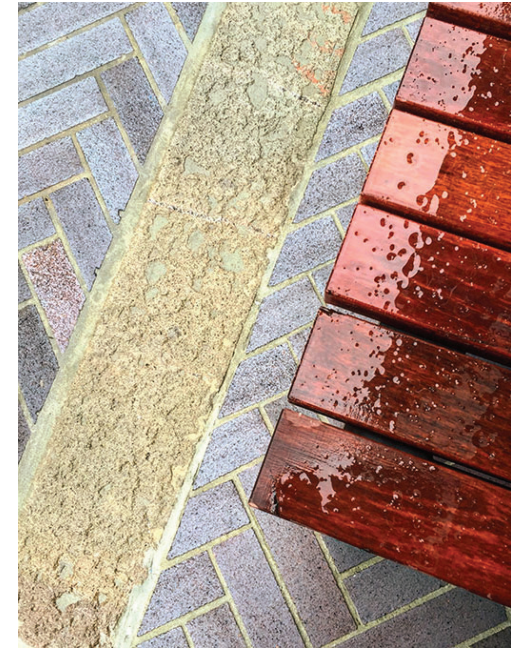
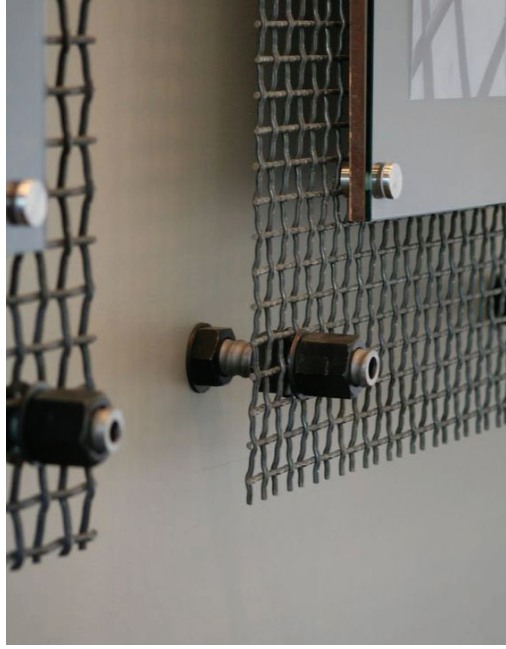
RESTAURANTS & BARS

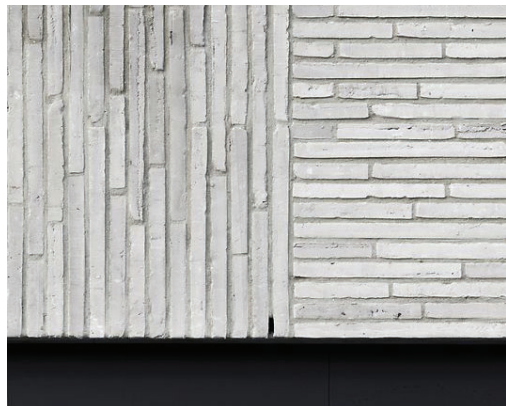


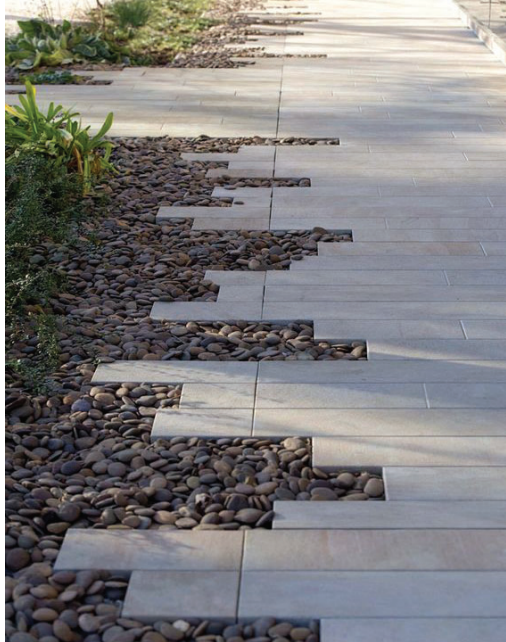
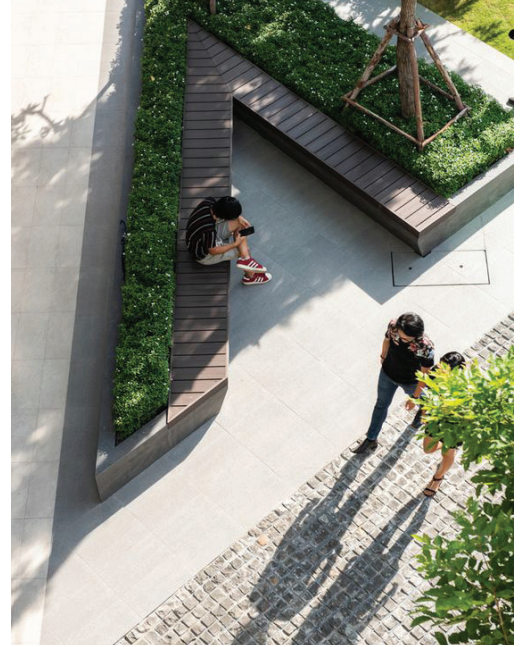
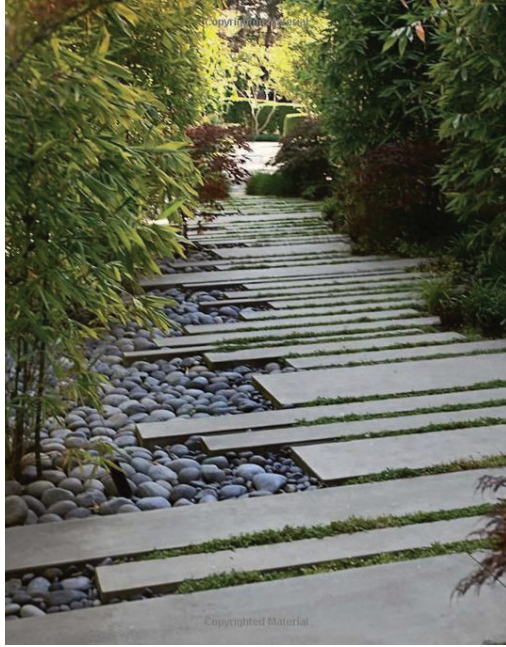
SIDEWALK RETAIL

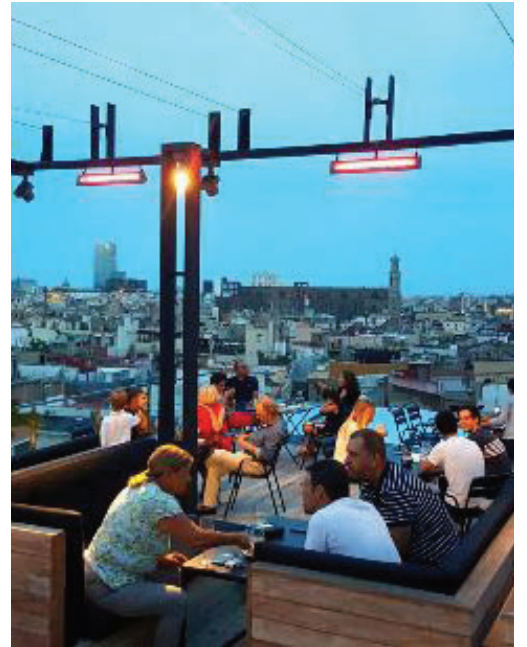
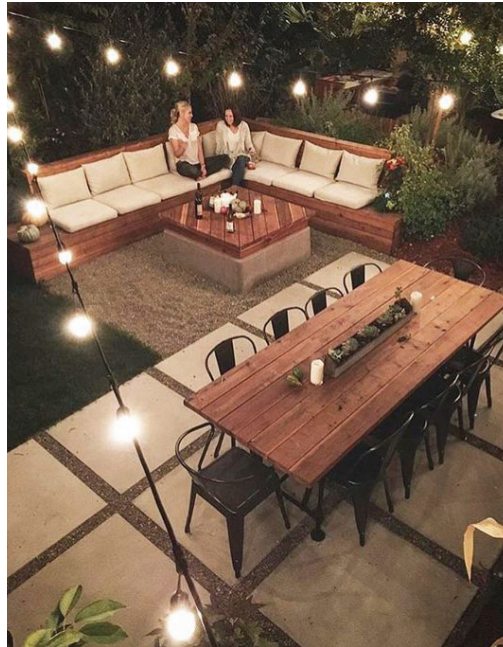














NORTH | SIR LOWRY ROAD



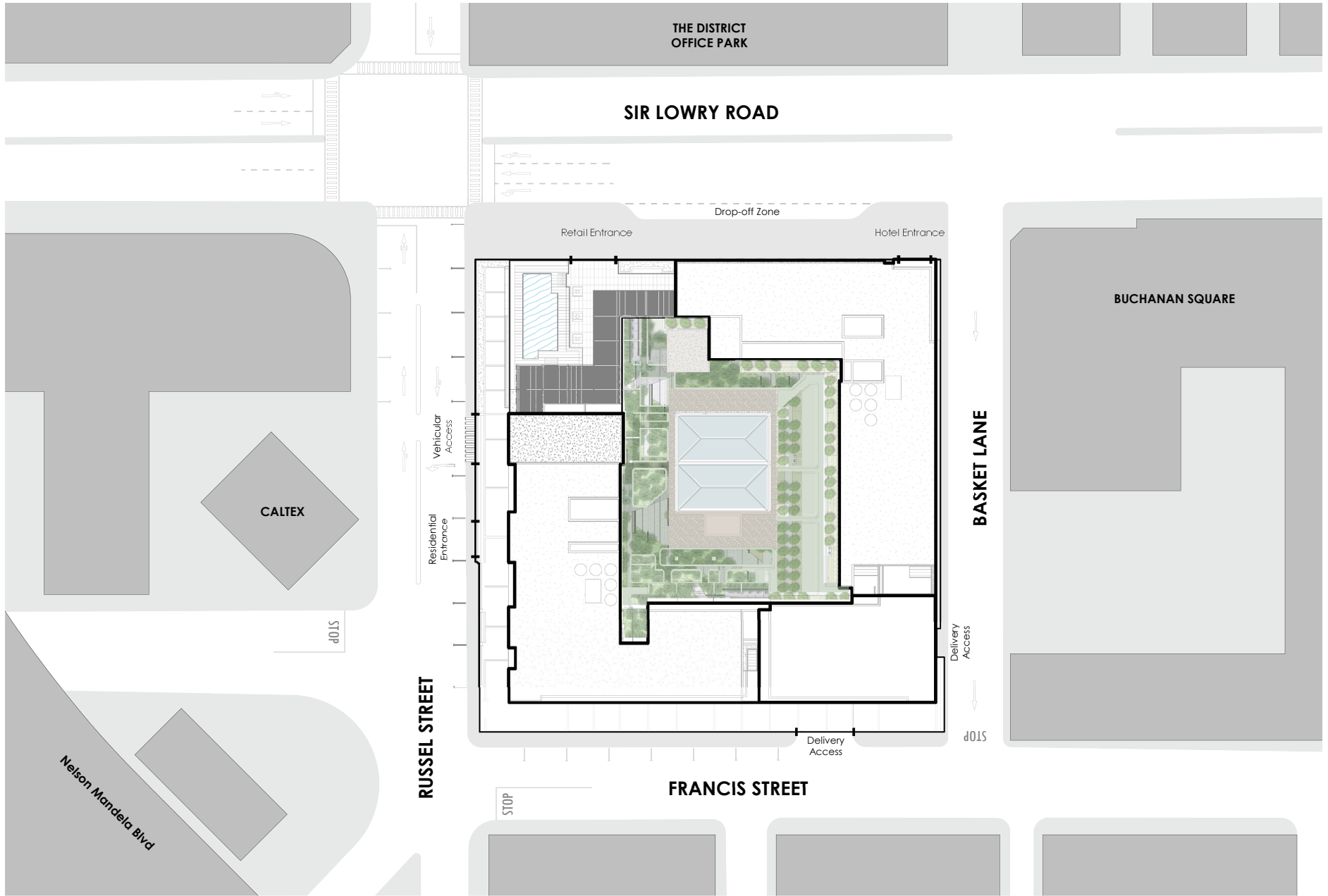
SOUTH | FRANCIS STREET



EAST | BASKET LANE



WEST | RUSSELL STREET



RUSSEL LANE

BASKET LANE

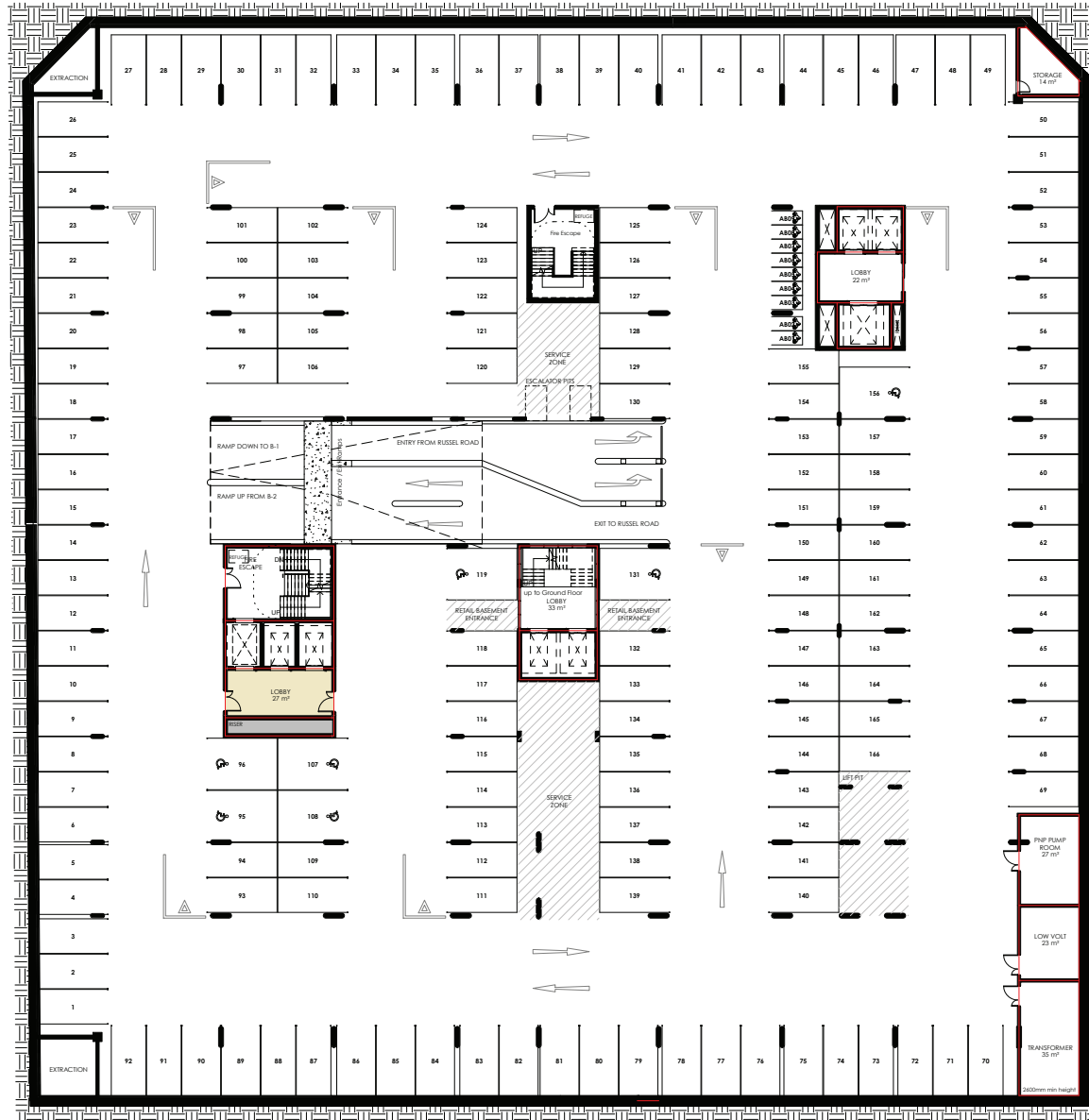


REFER TO DISCLAIMER

Level Key



SIR LOWRY ROAD



RUSSEL LANE

BASKET LANE

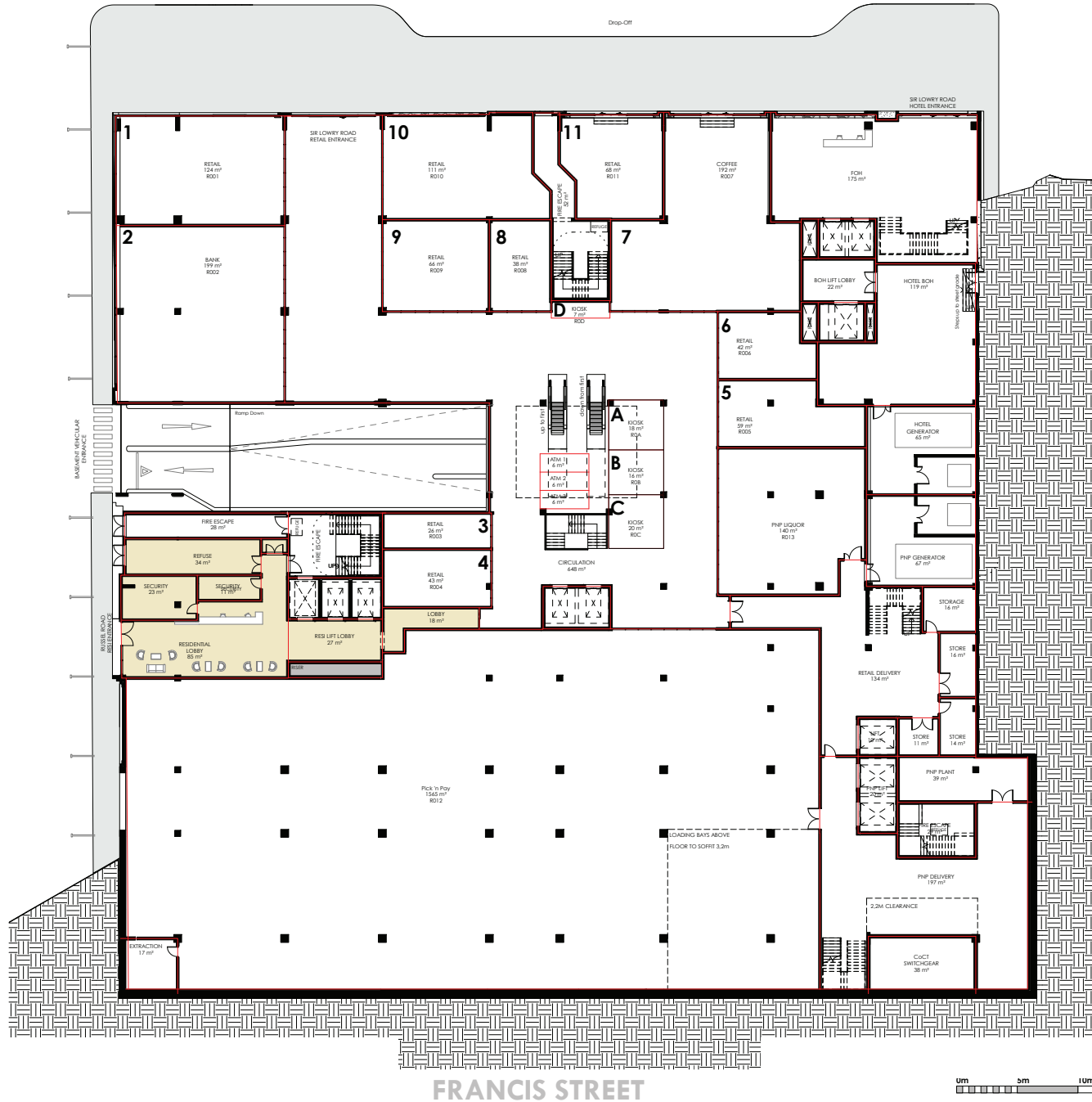
FRANCIS STREET

Level Key



REFER TO DISCLAIMER

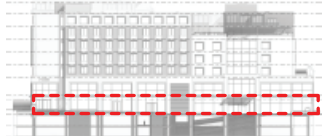
SIR LOWRY ROAD



RUSSE LANE

BASKET LANE

Level Key

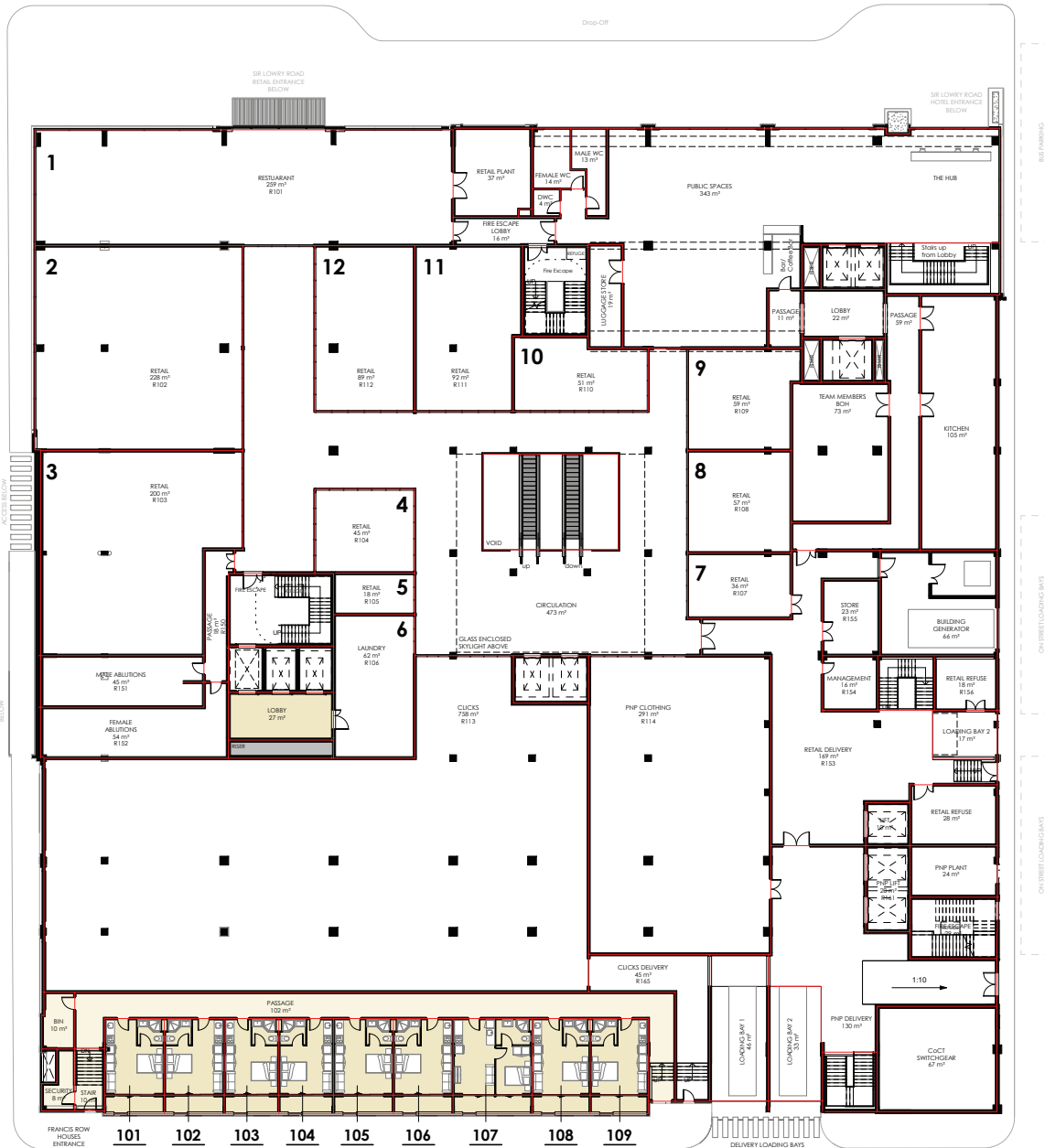


REFER TO DISCLAIMER

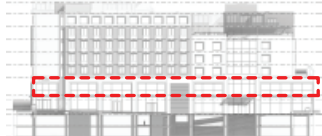
SIR LOWRY ROAD

RUSSEL LANE

BASKET LANE



Level Key



FRANCIS STREET

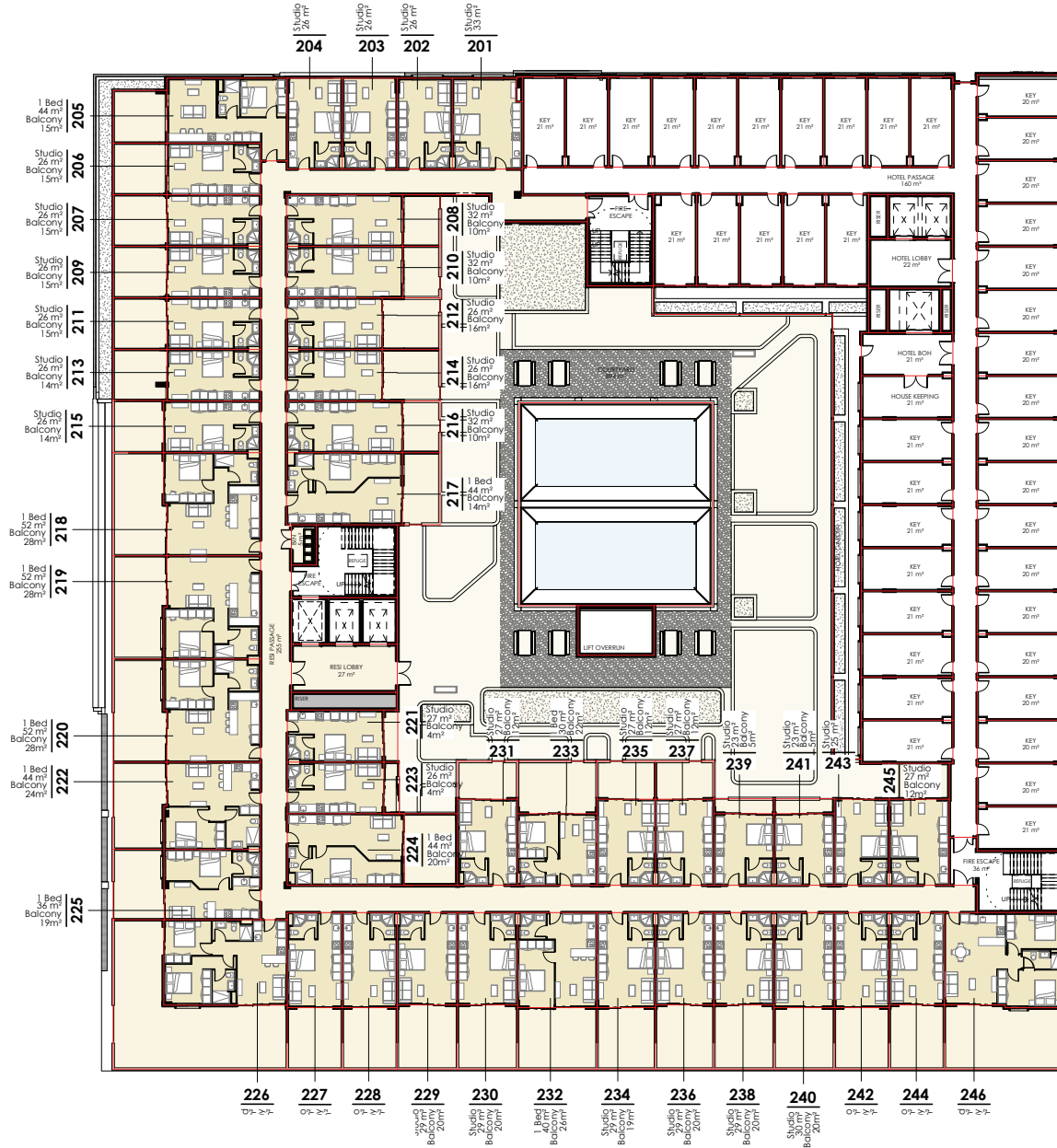


REFER TO DISCLAIMER

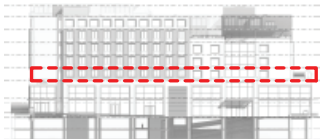
SIR LOWRY ROAD

RUSSEL LANE

BASKET LANE



Level Key



FRANCIS STREET

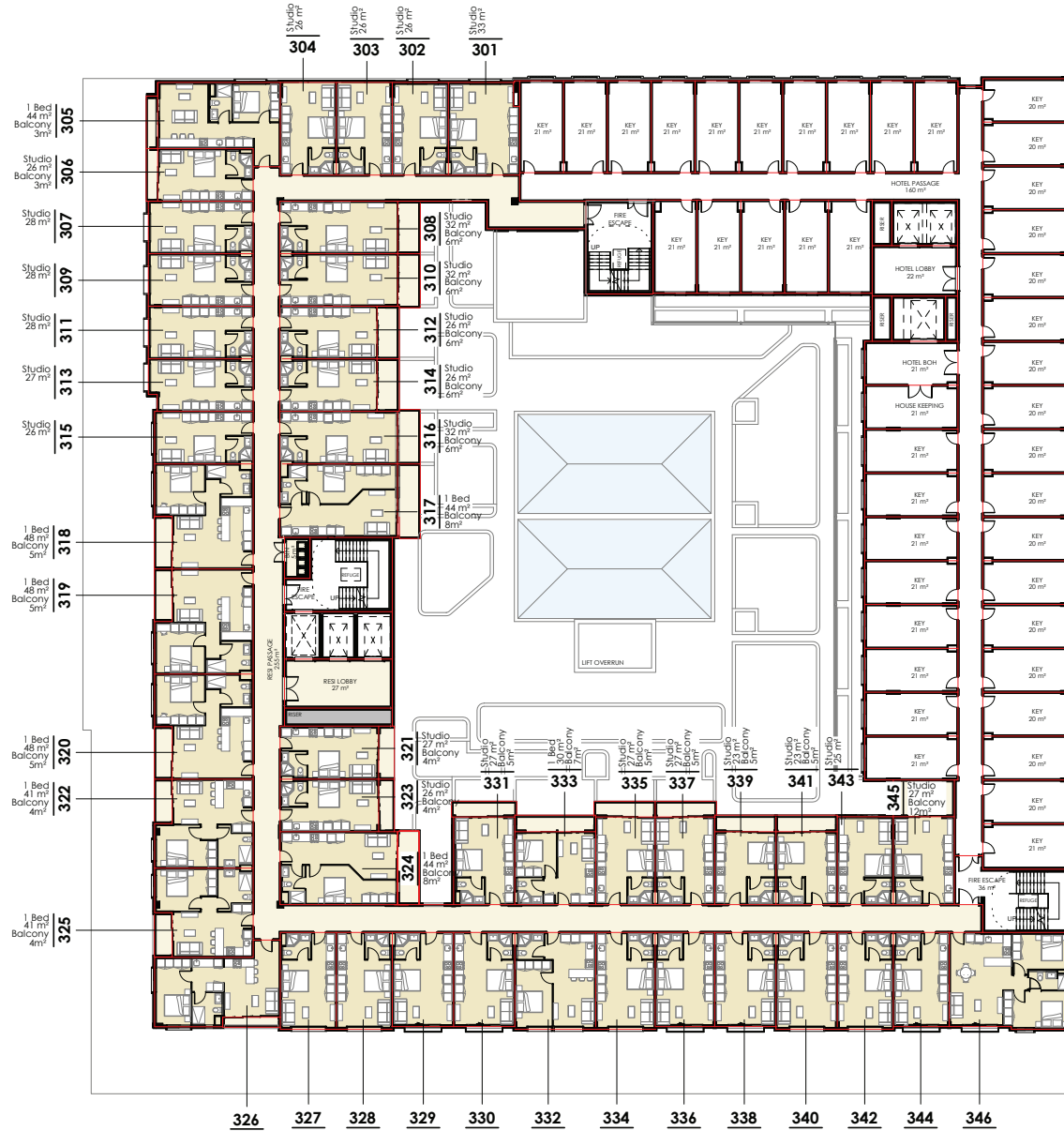


REFER TO DISCLAIMER

SIR LOWRY ROAD

RUSSEL LANE

BASKET LANE



Level Key



FRANCIS STREET

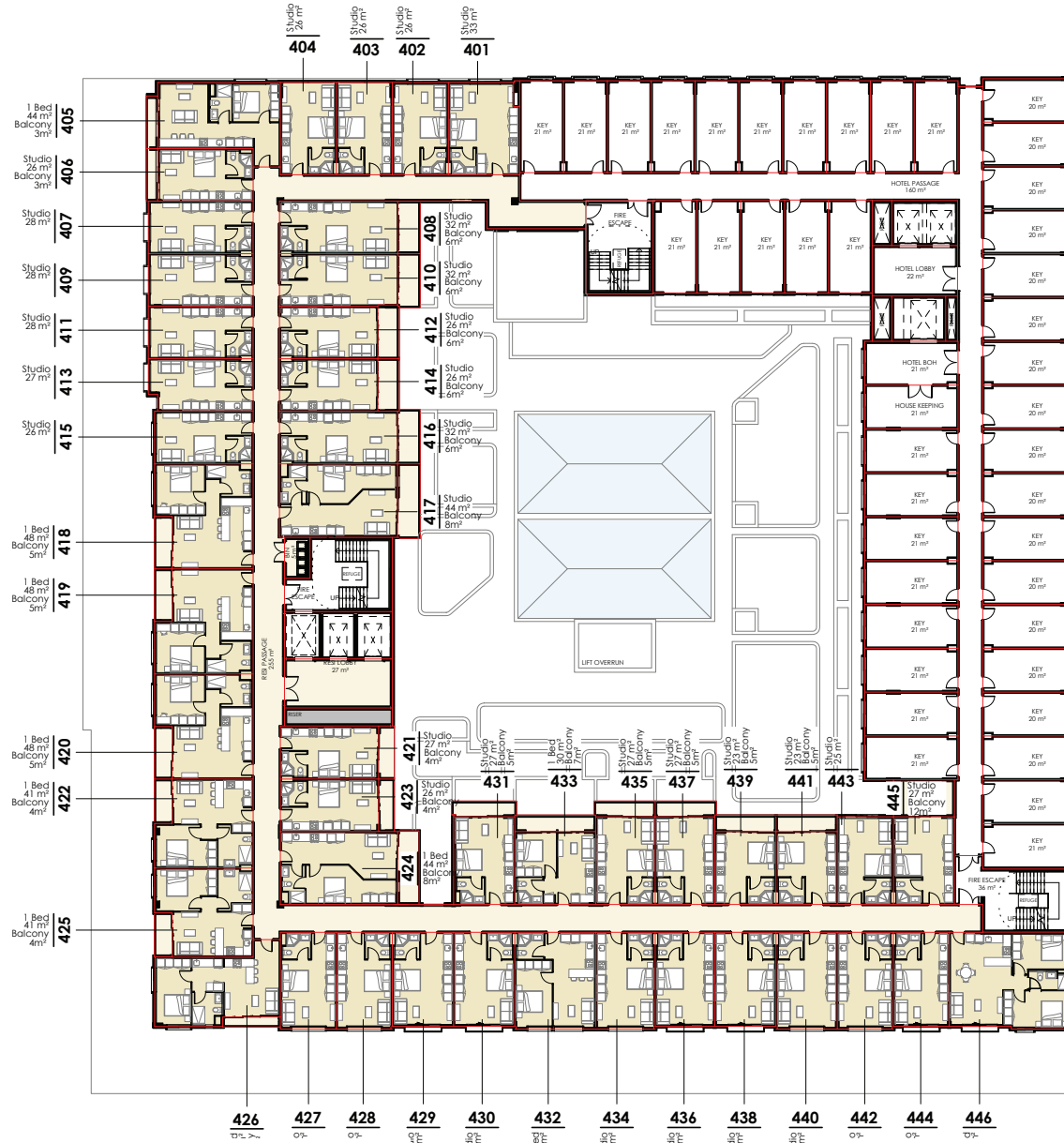


REFER TO DISCLAIMER

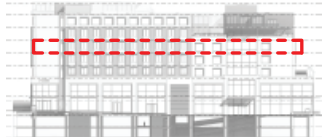
SIR LOWRY ROAD

RUSSEL LANE

BASKET LANE



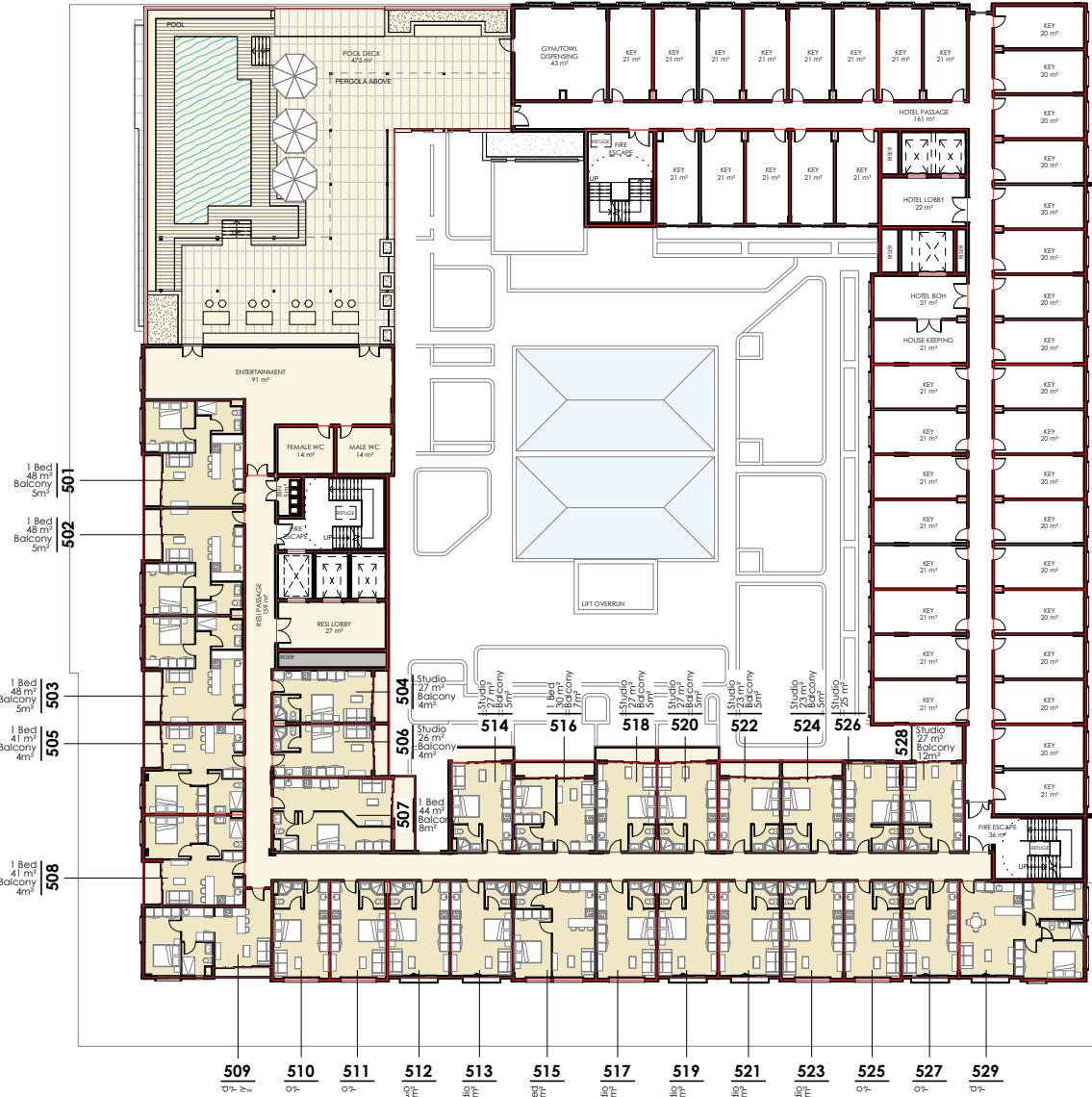
Level Key



FRANCIS STREET



REFER TO DISCLAIMER

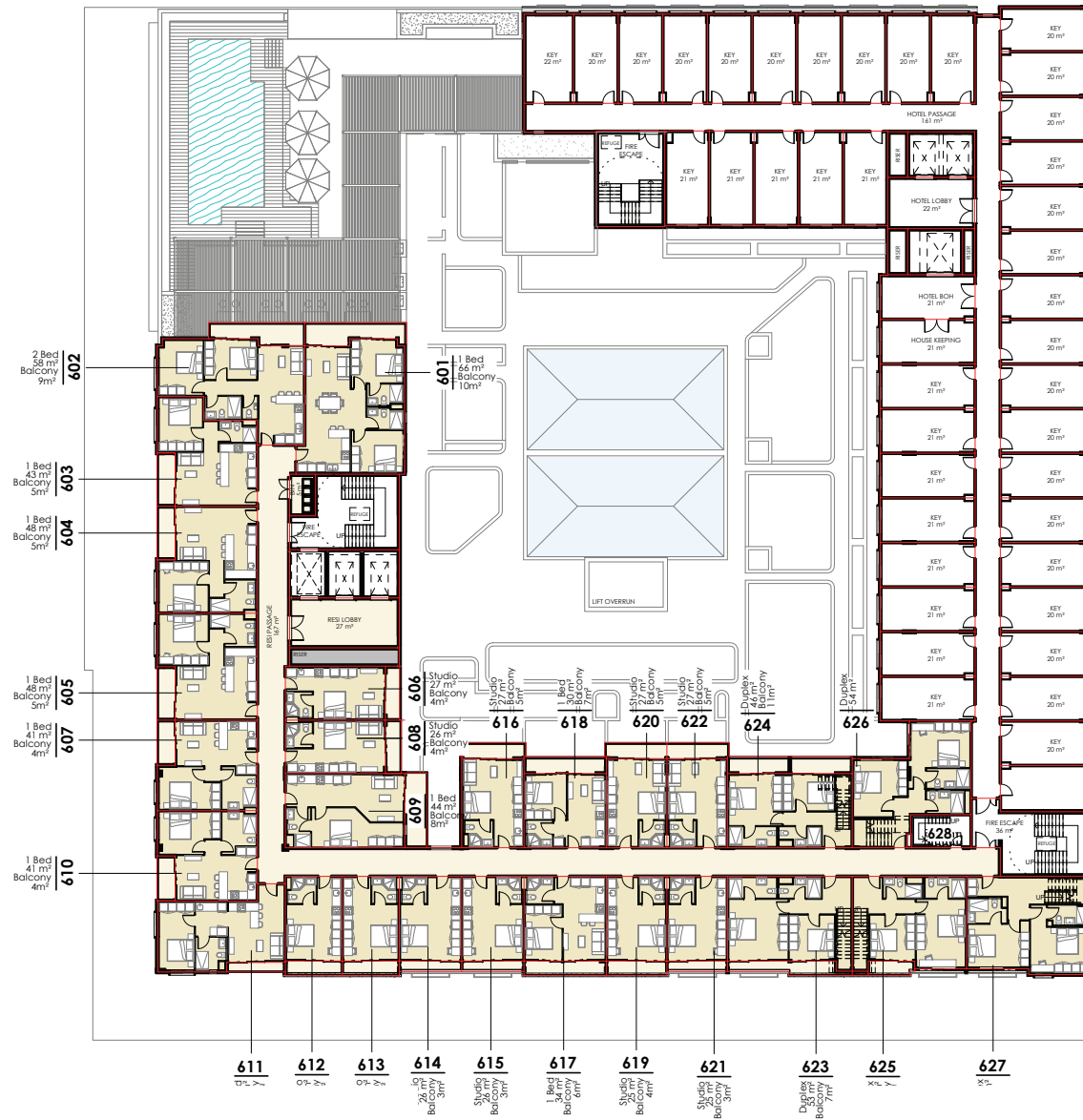


REFER TO DISCLAIMER

SIR LOWRY ROAD

RUSSEL LANE

BASKET LANE



Level Key



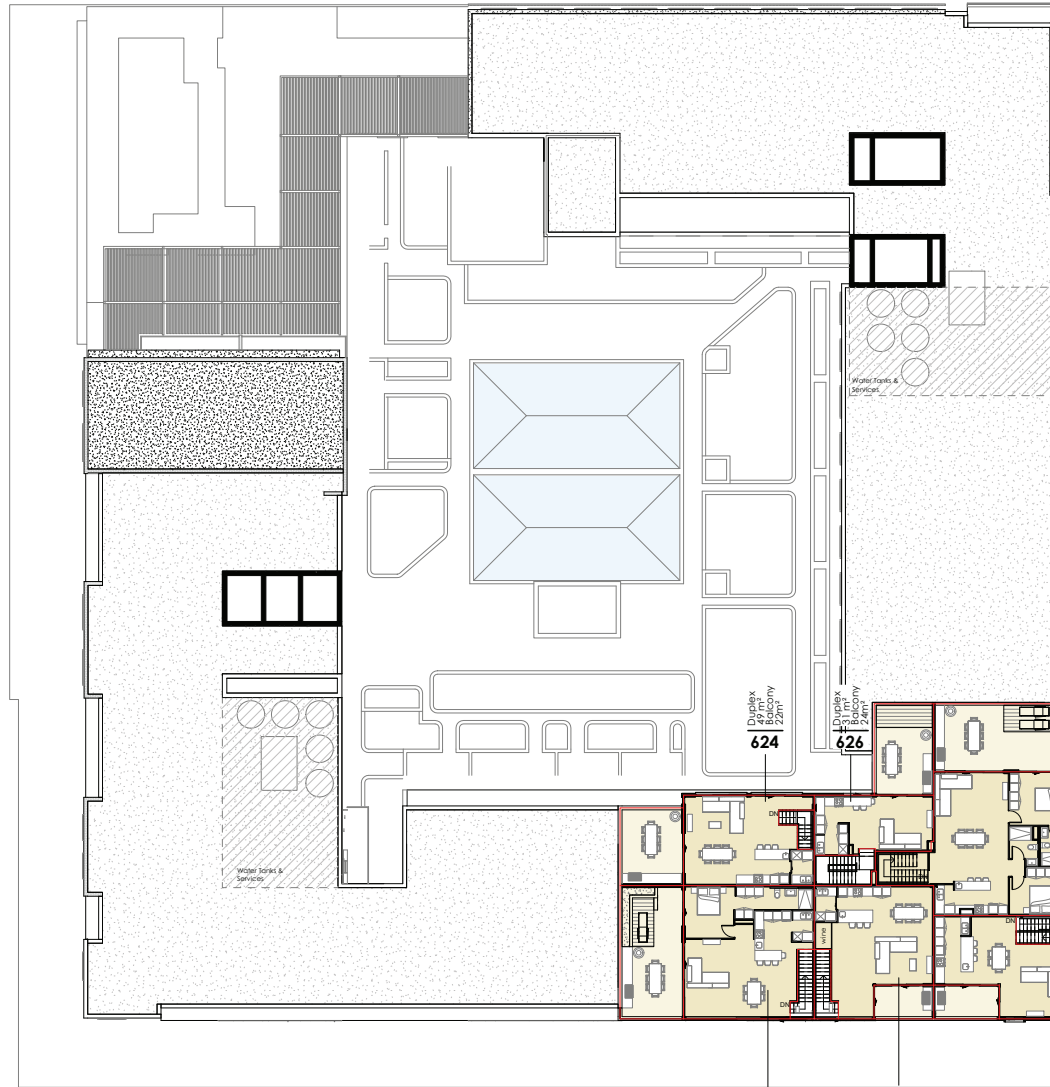
FRANCIS STREET



REFER TO DISCLAIMER

RUSSEL LANE

BASKET LANE



624 Duplex 84 m² Balcony 22m²

626 Duplex 51 m² Balcony 24m²

628 Duplex 94 m² Balcony 40m²

627 Duplex 45 m² Balcony 10m²

623 Duplex 77 m² Balcony 38m²

625 Duplex 77 m² Balcony 9m²

FRANCIS STREET



REFER TO DISCLAIMER



