

5 March 2013



Savannah Environmental (Pty) Ltd
PO Box 148
Sunnighill
2157

Attention: Katen Jodas

BIOMASS POWER PLANT NEAR MKHUZE, KWAZULU-NATAL – HERITAGE IMPACT ASSESSMENT - ADJUSTMENT OF FOOT PRINT AREA

PGS Heritage completed the Heritage Impact Assessment (HIA) for the planned Biomass Power Plant (PP) near Mkhuze, in July 2012.

1. ORIGINAL HIA FINDINGS

The HIA concluded that ...*“The overall impact of the development on possible heritage resources is seen as acceptably low and impacts can be mitigated to acceptable levels.”*

The HIA further recommended that general heritage management measures, as contained in the HIA, be included in the Environmental Management Plan (EMP) for this project.

2. CHANGE OF FOOTPRINT FOR NEW ROD

The original Basic Environmental Assessment (BAR) considered two alternatives (**Figure 1**). New developer requires the extent of the development footprint for the Biomass PP to be extended in order to accommodate the biomass plant (which is now a DoE selected project for construction). The subdivision has been done – the plotted coordinates of the subdivision application are shown in **Figure 2**. The facility footprint is now required to fit within this area (**Figure 3**).



Figure 1 - Original alternatives considered



Figure 2 - New proposed foot print area

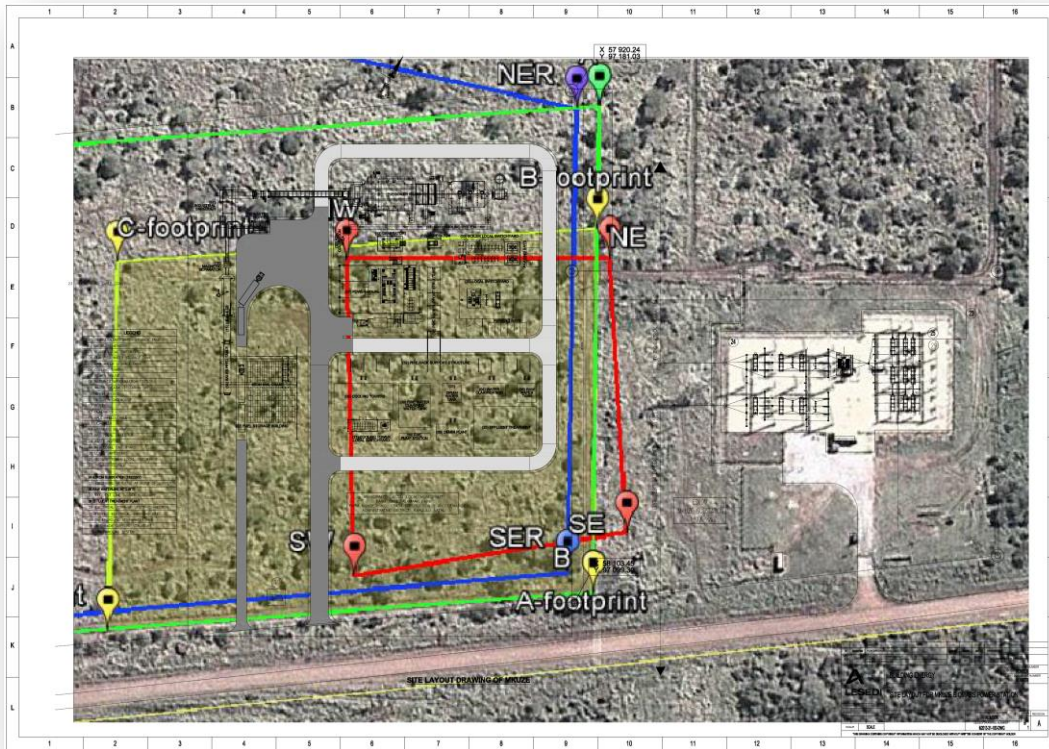


Figure 3 - New proposed foot layout (red line the original Alternative 2 foot print)

3. HERITAGE OPINION

During the original field work the archaeologist conducting the field work also traversed the new area (**Figure 4**) and found no heritage resources. It was found that the area was previously utilized for planting purposes and totally disturbed. Evaluating the new information and the field work data gathered during the original field work we are of the opinion that the impact on heritage resources will not differ from the original and is seen as acceptably LOW.

We recommend that the original management guidelines as contained in the 2012 HIA be implemented for the new site.

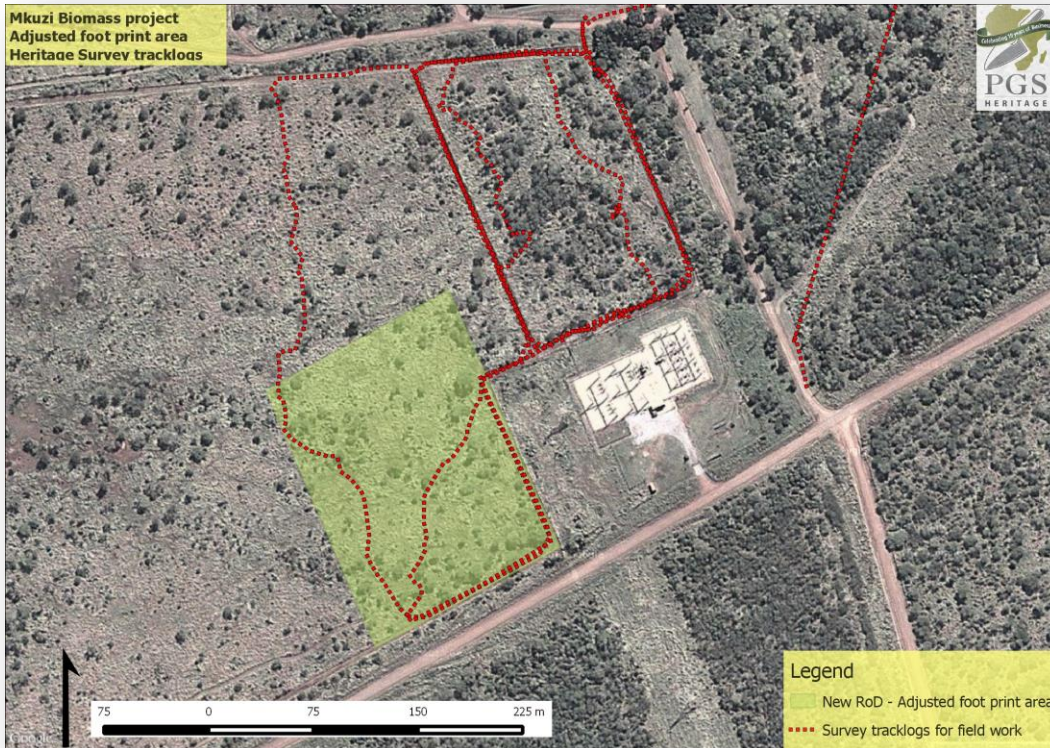


Figure 4 - New proposed foot area with tracklogs of survey in 2012

Any further enquiries can be lodged with Wouter Fourie at **tel:** 012 332 5305 or **email:** wouter@gravesolutions.co.za

Best wishes,

Wouter Fourie

Accredited Professional Heritage Practitioner (APHP), Accredited Professional Archaeologist (ASAPA)

Director

PGS Heritage