

Archaetnos



Culture & Cultural Resource Consultants

CC 1998 / 09854/23

☒ 55, GROENKLOOF, 0027

Tel: 083 459 3091

Fax: 086 520 4173

E-mail: antonv@archaetnos.co.za

30 May 2018

To whom it may concern

**LETTER FOR HIA EXEMPTION REQUEST: ADCOCK INGRAM SITE AT
CLAYVILLE X 59**

The above-mentioned project refers. The site is located in Clayville Industrial, Olifantsfontein (Longitude and Latitude 25° 58' 10.33" S and 28° 13' 24.30" E), just north of Olifantsfontein Road, on the opposite side of Olifantsfontein Road and north of the formalised informal settlement Tswelopele, Tembisa and 2-3 Km west of the R21 (Figure 1-2). The application is for the building of a warehouse on the property (Figure 3). The site will then be used for industrial purposes.

Site Location

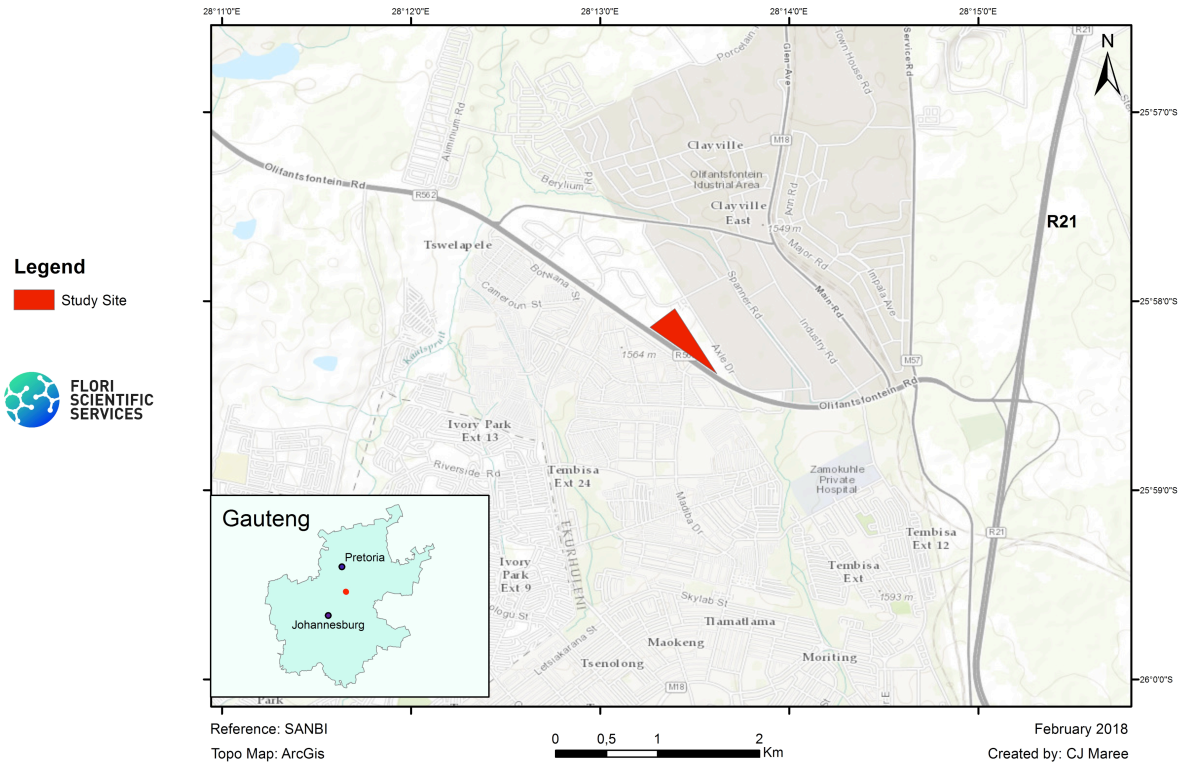


Figure 1: Site location.



Figure 2: Site detail.

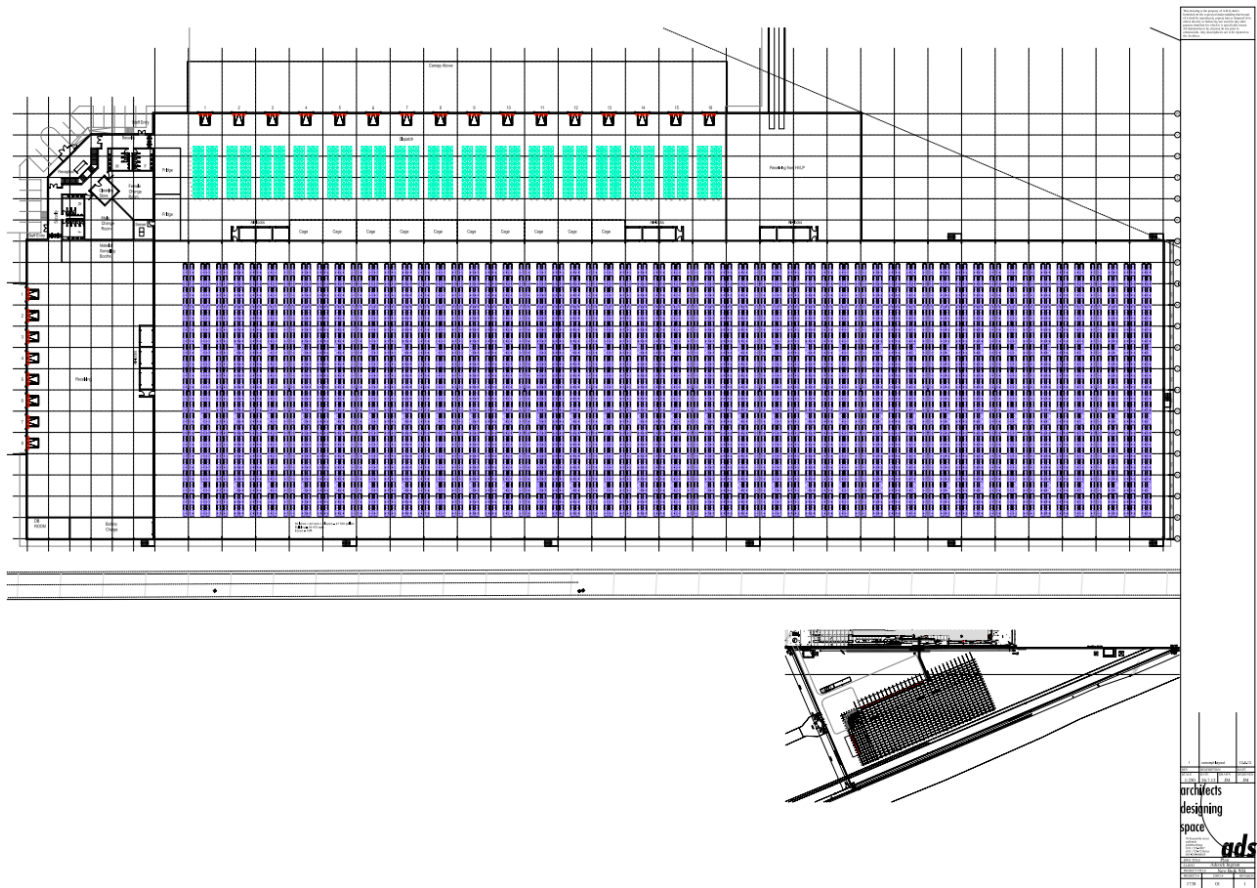


Figure 3: Development proposal.

The site is walled off with a 3 meter high brick wall with very little illegal dumping or activities. The site is shaped like a triangle and slopes quite steeply from a north to south direction and from east to west.

It is my opinion that the project may be exempted from doing a Heritage Impact Assessment (HIA). The following is applicable:

- The entire site is disturbed. It consists of grassland and pioneer plants such as weeds, a small rock outcrop and remains of wattle plantations (Figure 4-7).
- Other signs of disturbance include a berm and storm water channel (both earthen) running along the north-eastern boundary from the northern top corner to the eastern corner, three powerlines (Figure 8) which run from the northern top corner of the property to the bottom eastern corner of the property (parallel and next to the storm water channel as well as a pipeline along the southern boundary of the property).
- The pipeline is within the boundary with landscaped gardens, lawns and areas with rubble and buildings.
- None of the buildings on site are older than 60 years and therefore has no heritage significance.



Figure 4: General view of the site.



Figure 5: View of wattle plantations.



Figure 6: Another view of the site. Note the weeds and wall around the property.



Figure 7: Another view of the site.



Figure 8: Note the fence wall and power lines.

Due to the mentioned factors, the chances therefore of finding any heritage related features are indeed extremely slim. It is therefore believed that an additional Heritage Impact Assessment (HIA) is not needed for this project. This letter serves as an exemption request to the relevant heritage authority.

The developer should however note that due to the nature of archaeological material, such sites, objects or features, as well as graves and burials may be uncovered during construction activities on site. In such a case work should cease immediately and an archaeologist should be contacted as a matter of urgency to assess such occurrences.

Recommendation:

That the development be exempted from doing an HIA.

I trust that you will find this in order.

Yours faithfully

Prof AC van Vollenhoven: Director