

**APPENDIX  
PLASTER STRIPPING**

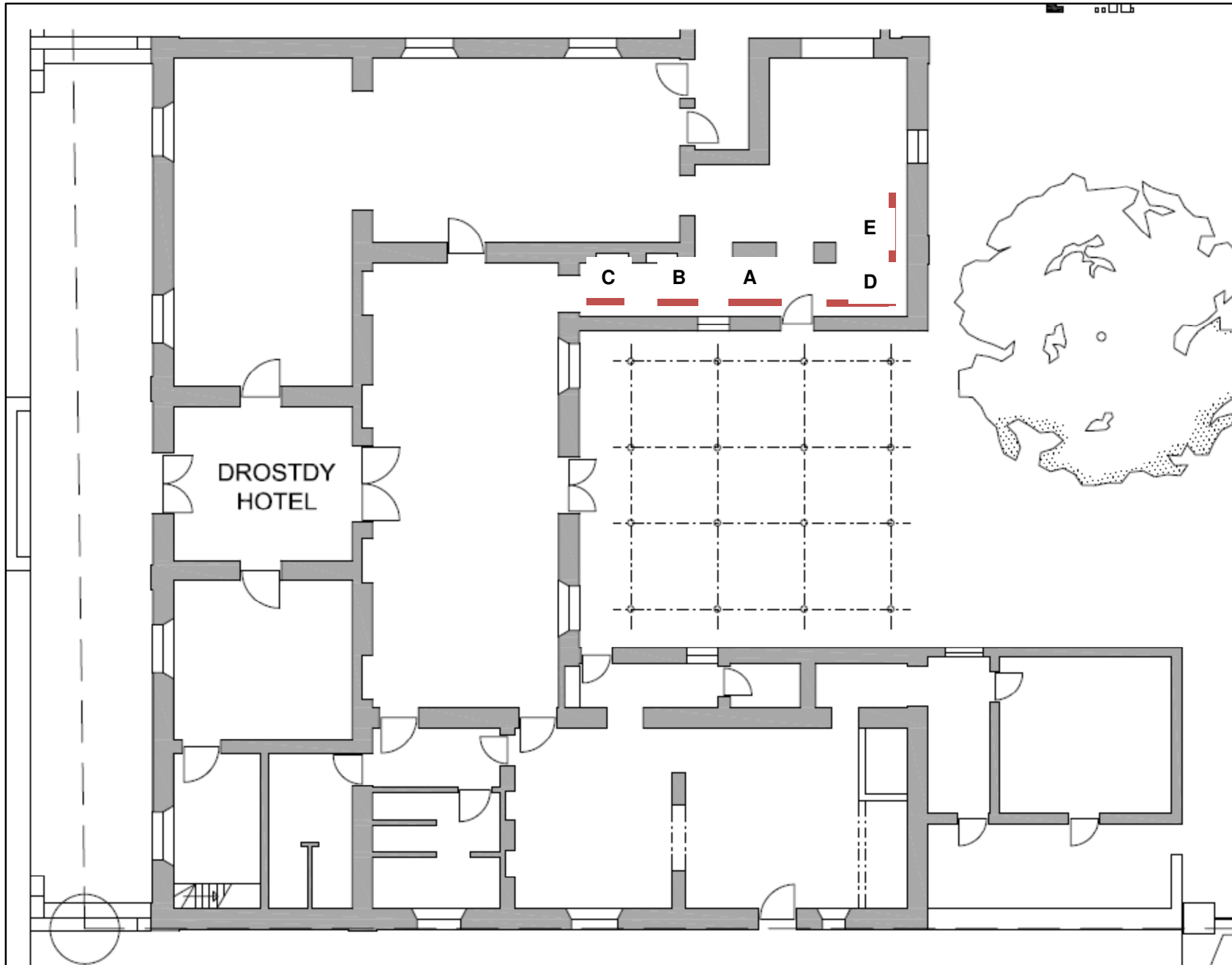


Figure 21: Location of plaster stripping at Drostdy Hotel.



Figure 22: Plaster Strip A between the window and the door on the north facing wall of the southern wing. Note the standard-shaped, fired bricks and grey cement work around the window and door, but the larger and softer red bricks and red clay mortar between them.

Figure 23: Plaster Strip B showing the fired red brick and grey cement mortar used to insert the window at a later date.





Figure 24: Plaster strip C shows the join of the internal courtyard wall with the original U-shaped building. The bricks are red with white flecks and bonded with grey cement mortar.

Figure 25: Right Plaster Strip D on the north facing wall of the southern wing, showing the soft red bricks and red clay mortar with recent insert of a pipe.







Figure 26 (Above): Showing the location of Plaster Strips D and E. Figure 27 (Below) shows the uneven join between the northern and eastern walls, indicating that a section of the eastern wall was added later.



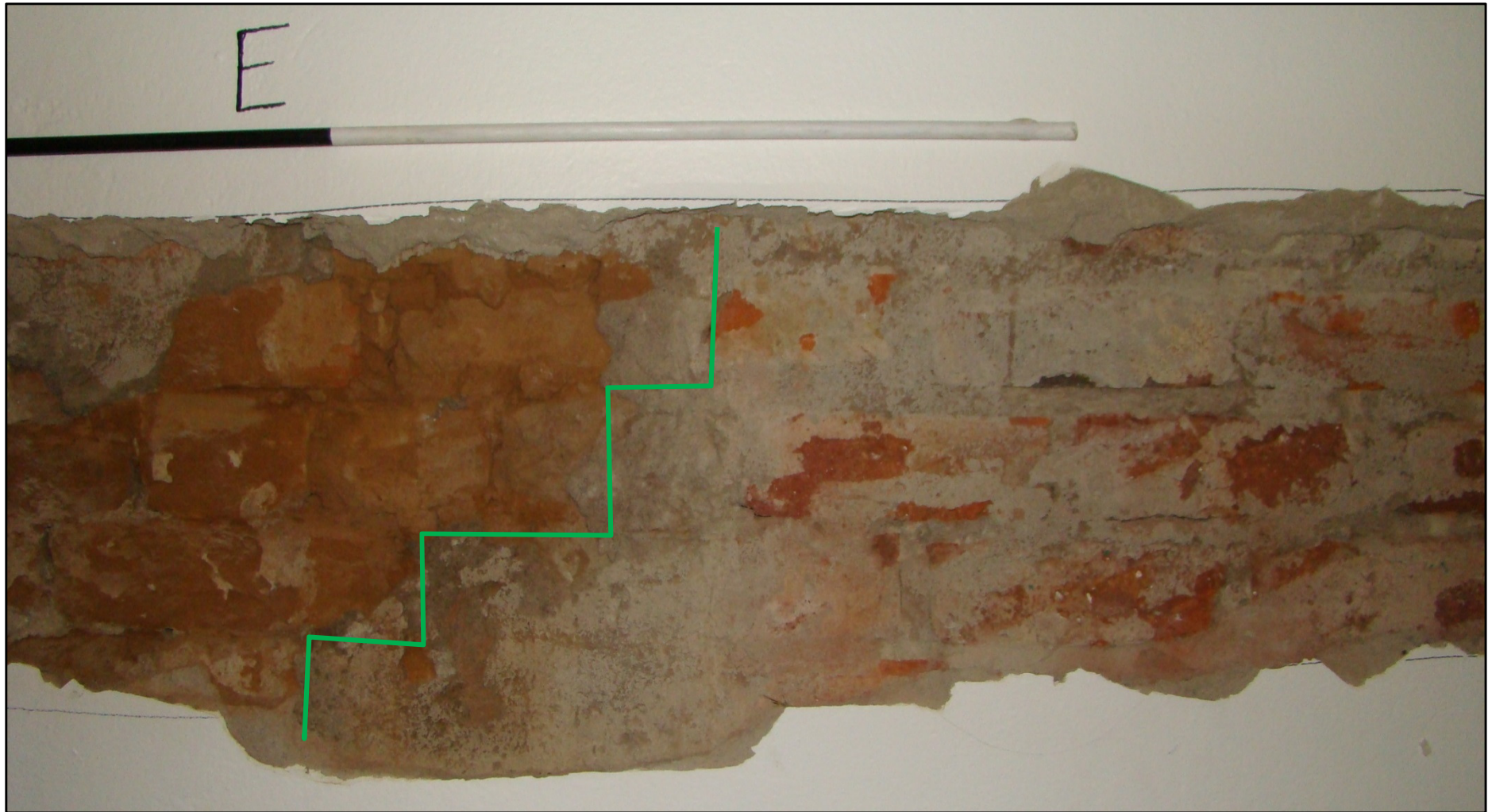


Figure 28: Plaster Strip E – the join between the red brick and grey cement mortar on the right, and the older and softer red mud brick and red clay mortar on the left.



Figure 29: Indicating the soft red brick with soft clay mortar.



Figure 30: There appears to be a thin layer of white lime wash or lime plaster adhering to the mud brick under the grey cement mortar.



# COTTAGE 3

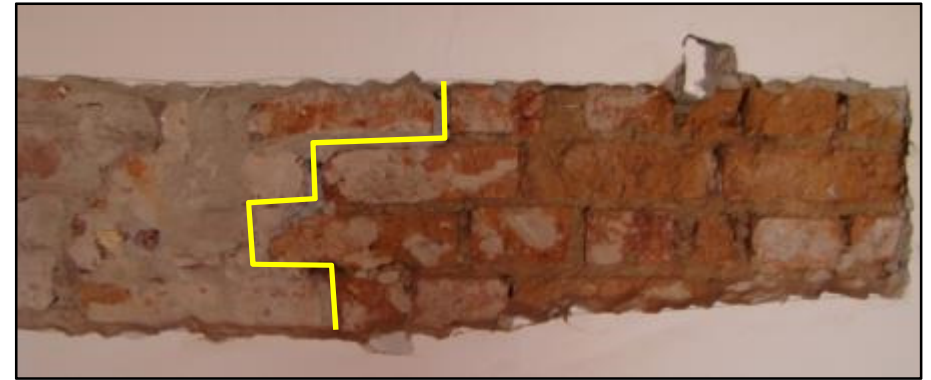
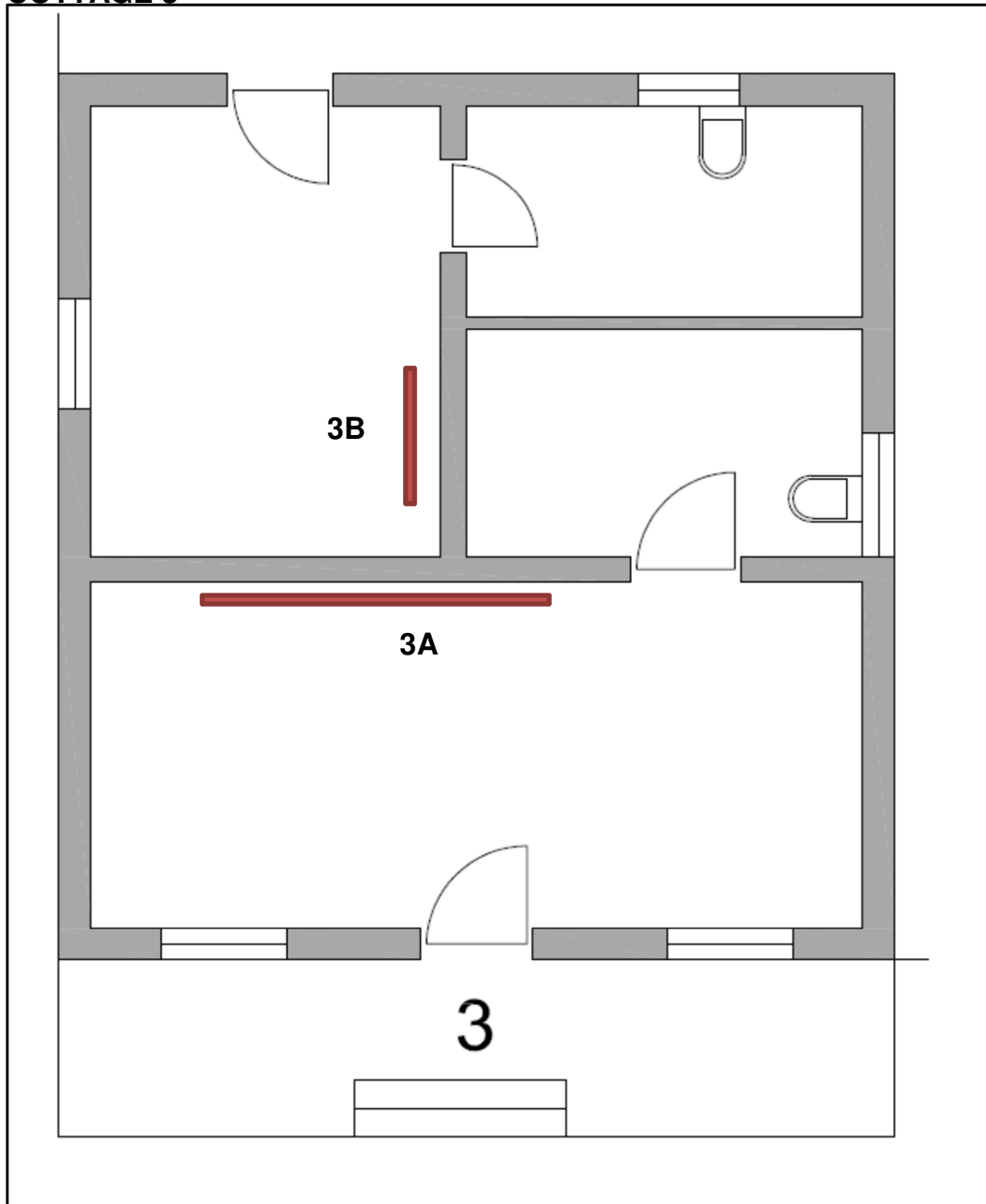


Figure 31: Plaster Strip 3A shows the older red mud bricks with mud mortar to the right of the yellow line and the clear break to the left with hard red brick and grey mortar.



Figure 32: Standard size red brick with grey mortar – English bond.



# COTTAGE 4

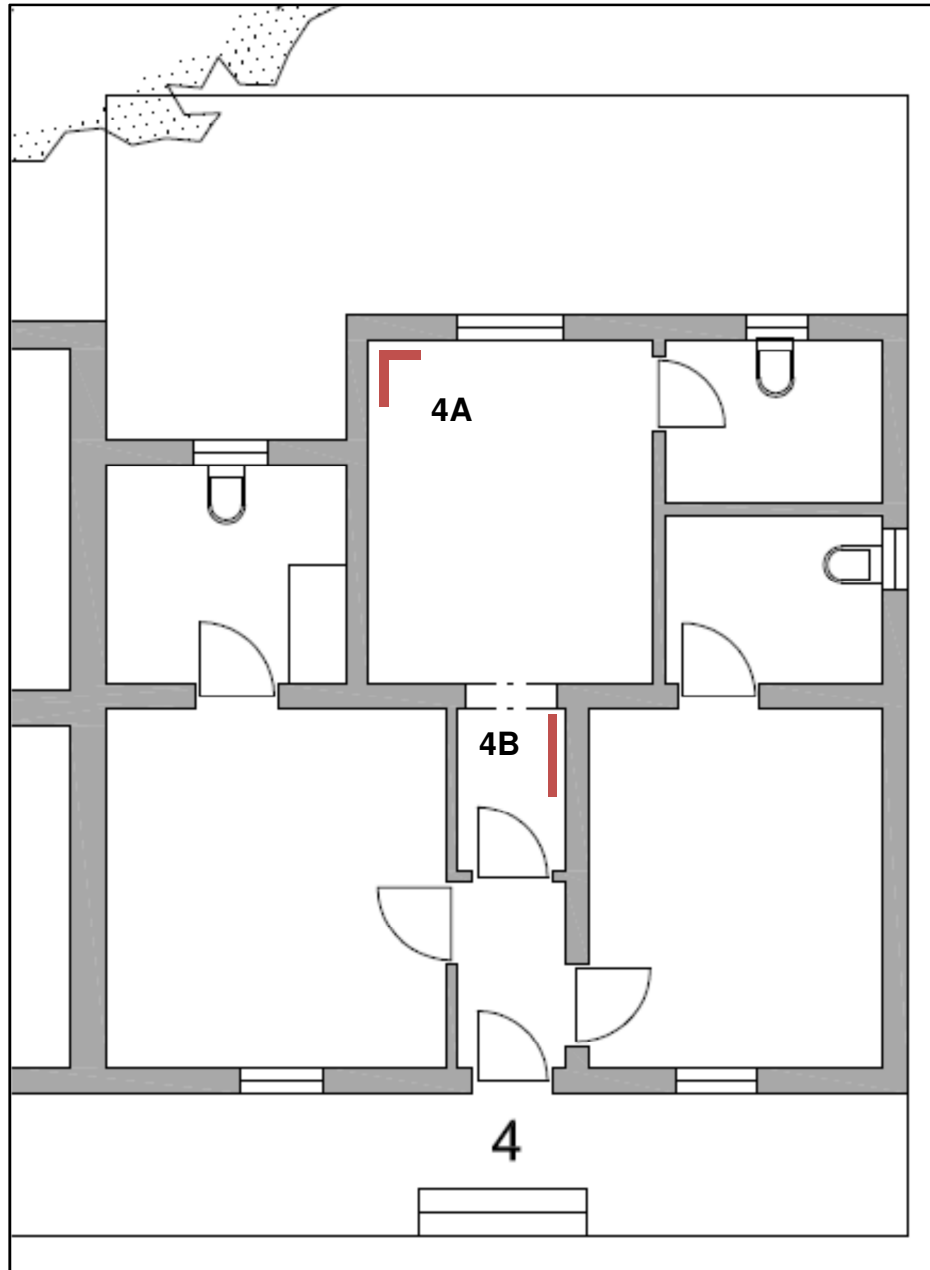


Figure 33: Plaster Strip 4A in corner of room.



Figure 34: Older red brick and red mortar to the right, recent alteration to left.

## COTTAGE 5

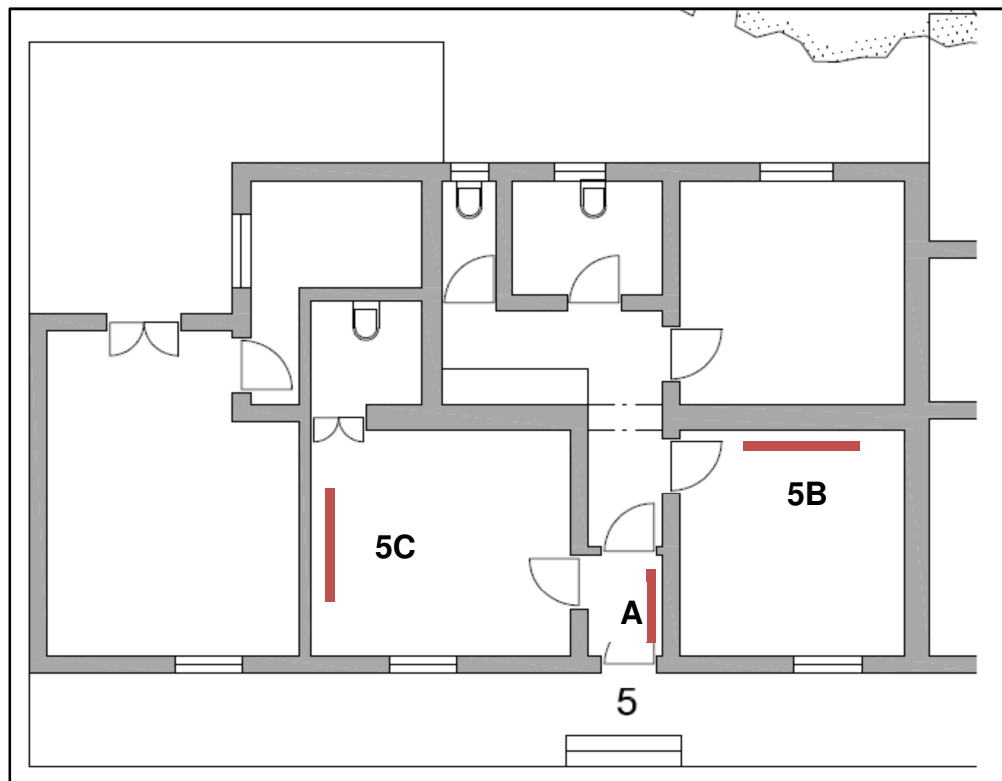


Figure 35: Strip 5A above shows sections of soft red brick and clay mortar to the right while the left consists of a harder red brick and grey cement mortar. Figure 36 below from Strip 5B shows mud brick walls and plaster which is held together with chicken wire.



Figure 37: Strip 5C to the left shows a fired red brick wall with grey cement mortar.

## COTTAGE 8

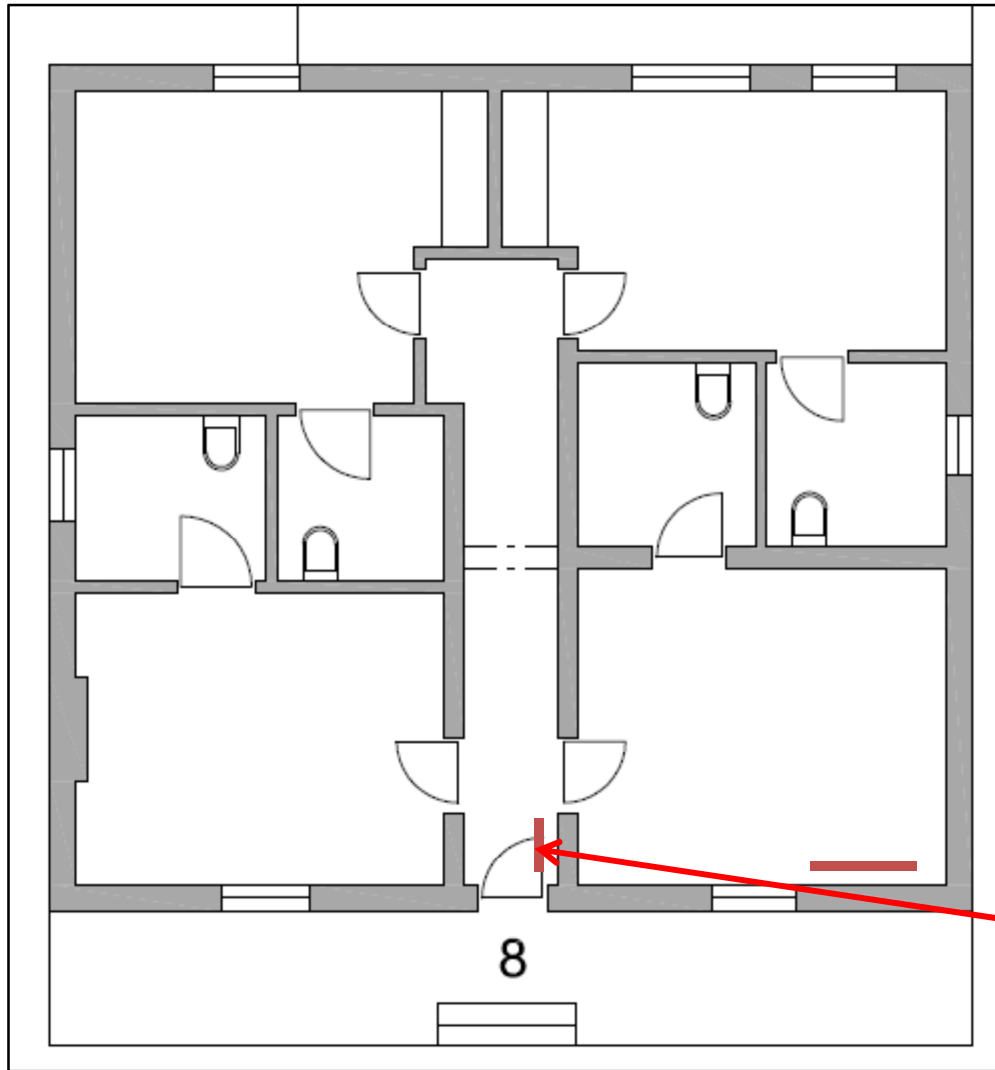


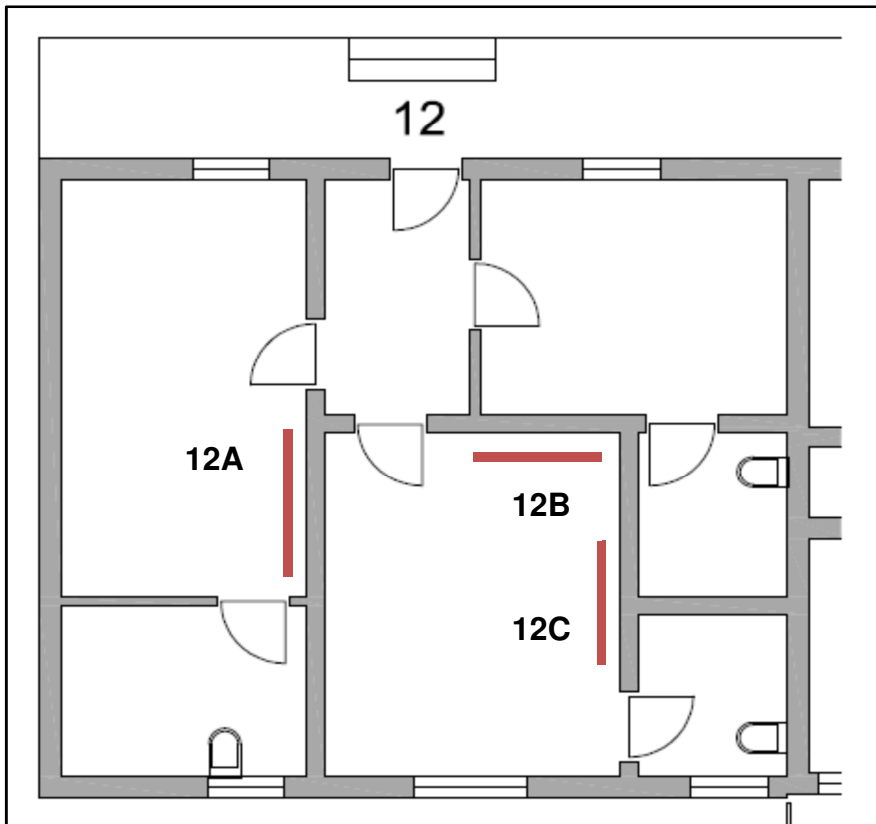
Figure 39: The mud bricks found in the entrance wall to the right are different from the external walls.

Figure 38: The floor beams are resting on a newly constructed wall in front of the original wall of the cottage. The enlargement shows red mud brick and red mud mortar.





COTTAGE 12



Figures 40: Plaster strips in Cottage 12. All reflect recently constructed walling.



## COTTAGE 14

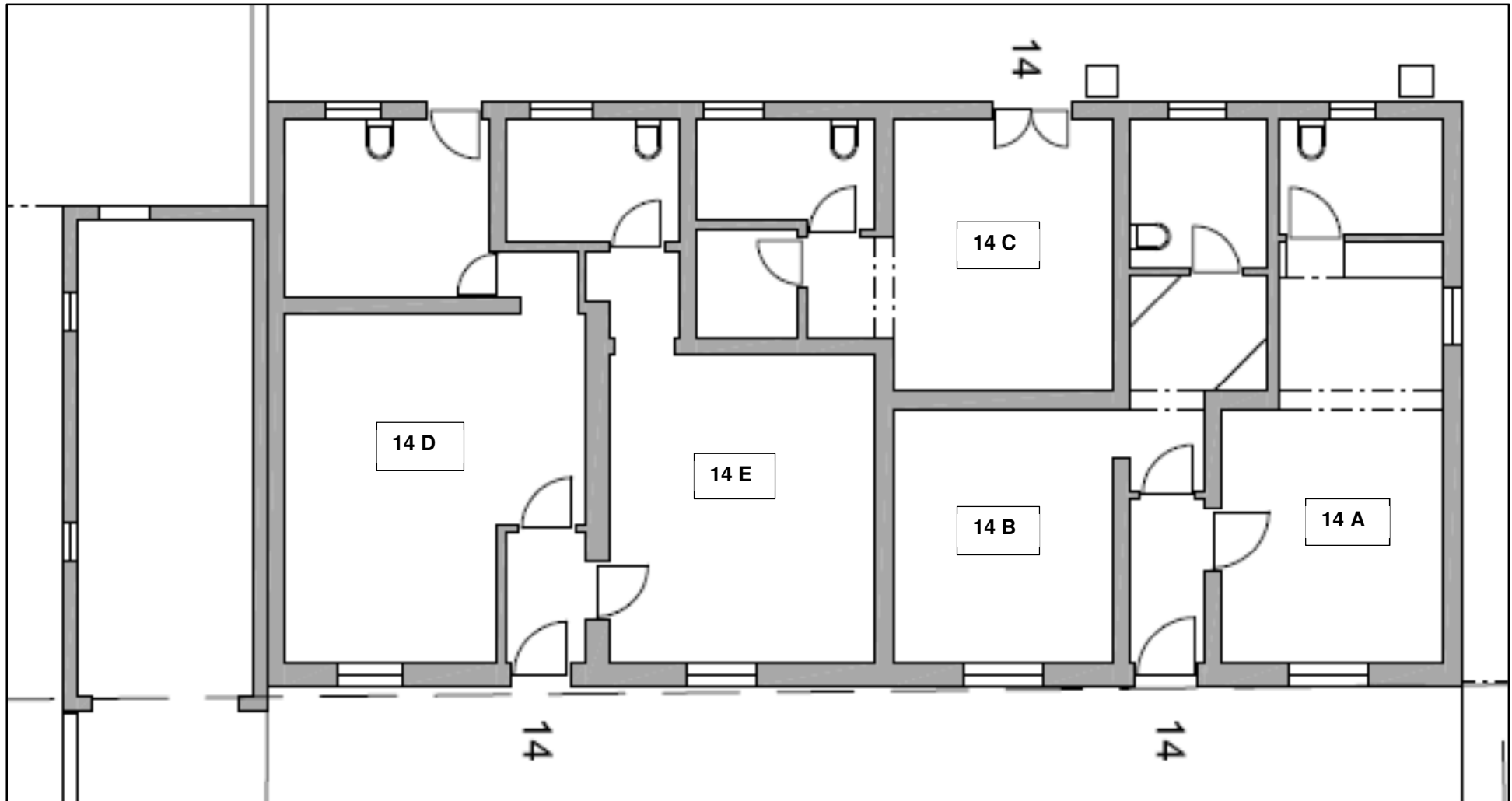


Figure 41: Existing Cottages 14 (A-E) prior to renovation, looking eastward from Bourke Street.

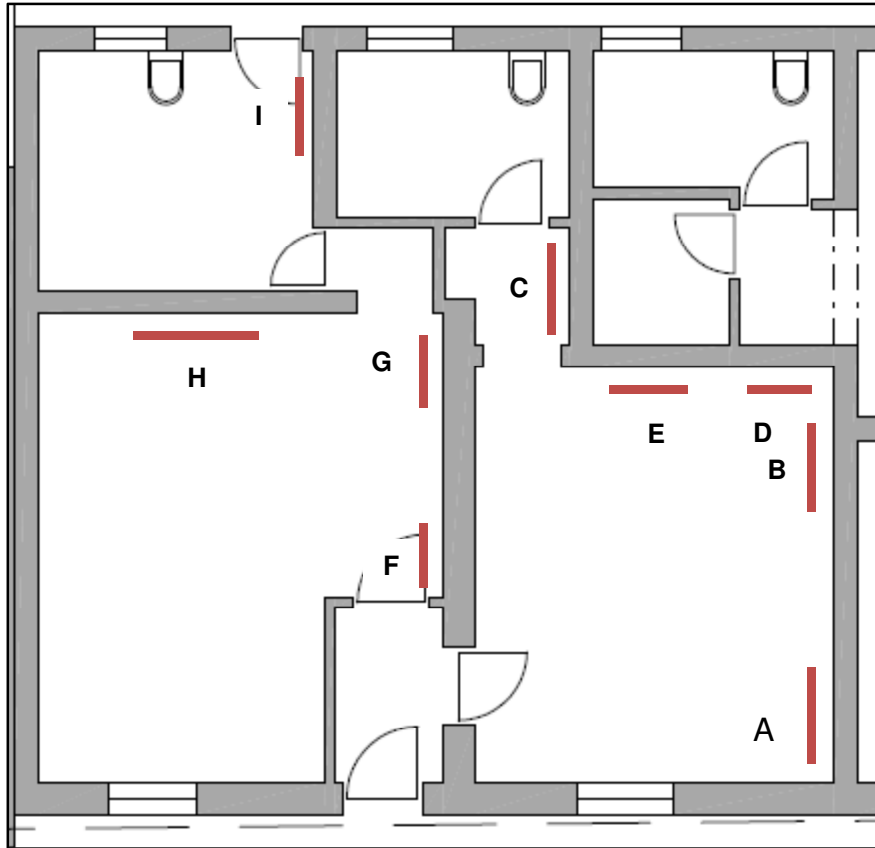


Figure 42: Location of plaster strips removed from interior walls.

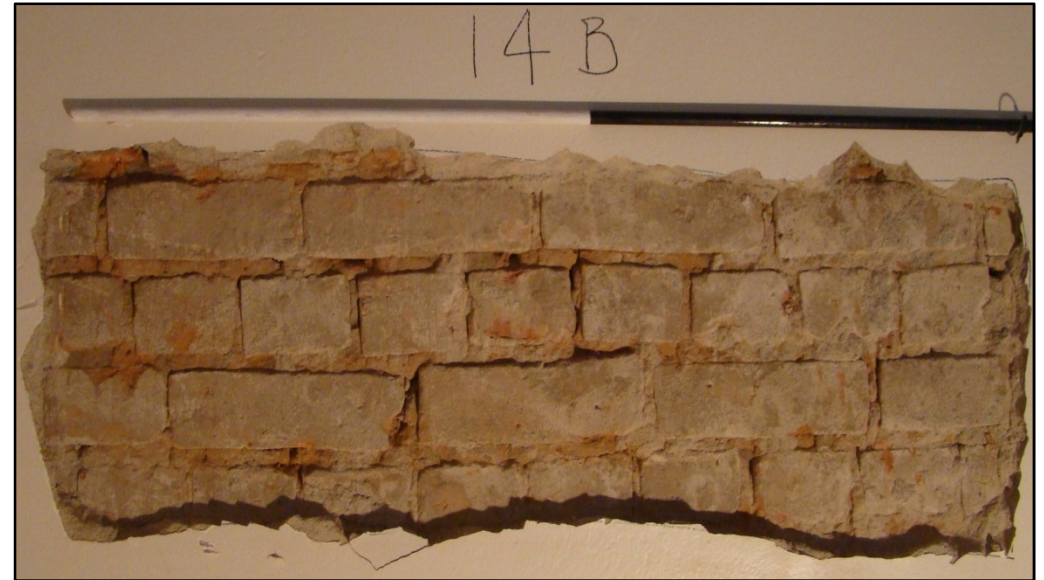


Figure 43: Fired regular red bricks with red mud mortar from plaster strip 14B (same as 14 A). The wall is built in English bond.



Figure 44: Plaster strip 14C showing fired red brick with grey cement mortar.

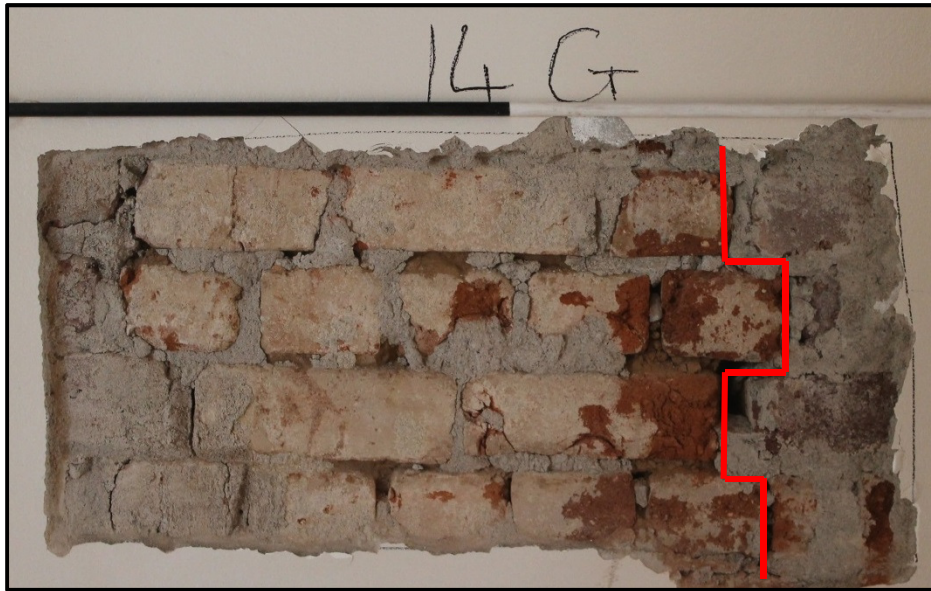


Figure 45: Location of plaster strips 14B, D and E



Figure 46: Plaster strip 14D (in the cupboard to the right), shows that an opening in the mud brick and mortar wall was filled with hard red brick and grey cement mortar. Plaster strip 14E (above) shows that the wall comprises a mixture of mainly headers, but also some stretchers and also some broken brick.





Figures 47: Plaster strips 14G and 14F indicating an aperture in the wall which has been filled with red brick and grey cement mortar. Figure 48 (below) shows the hard red brick and grey cement mortar exposed by plaster strip 14H. Strip 14I reveals a similar wall.





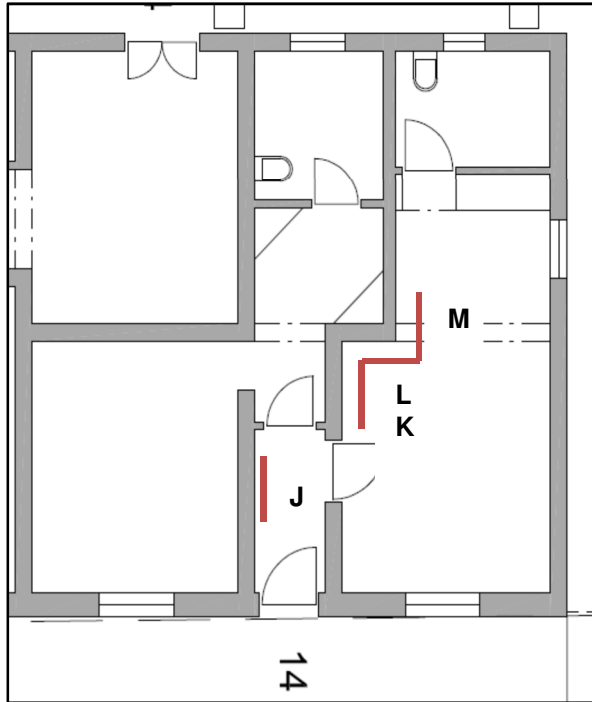


Figure 49: Plan left which shows the location of plaster stripping in Cottage 14 A & B. Figure 50: (below) the plaster strips 14 K, 14 L and 14 M.





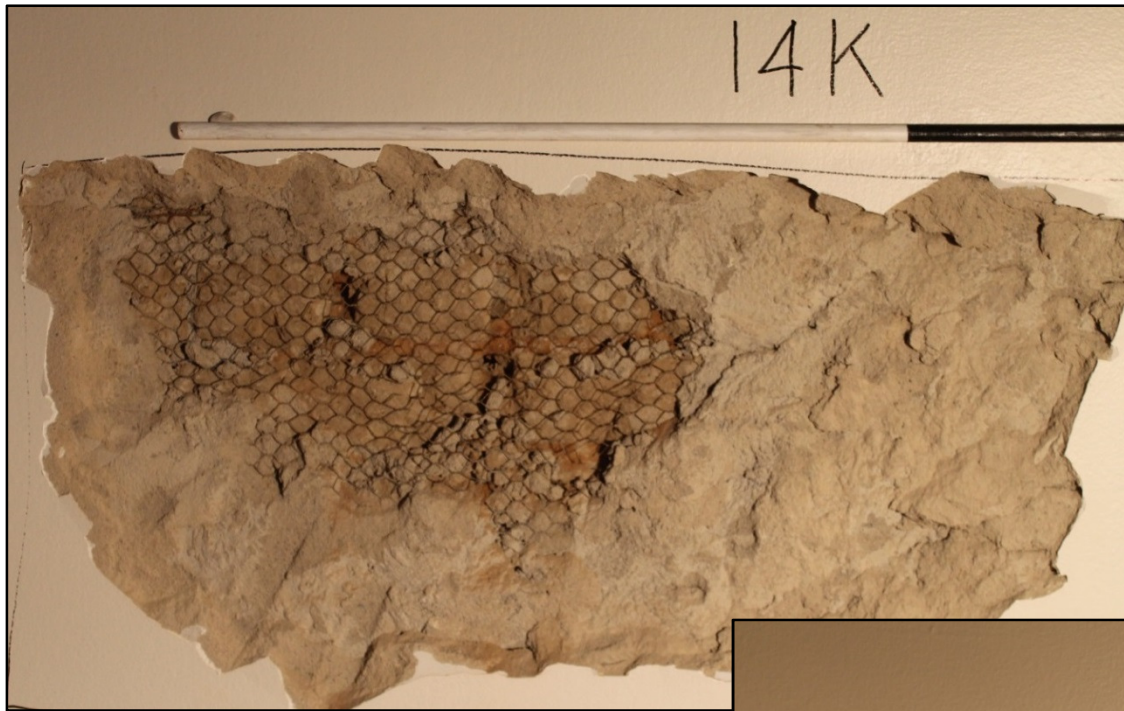
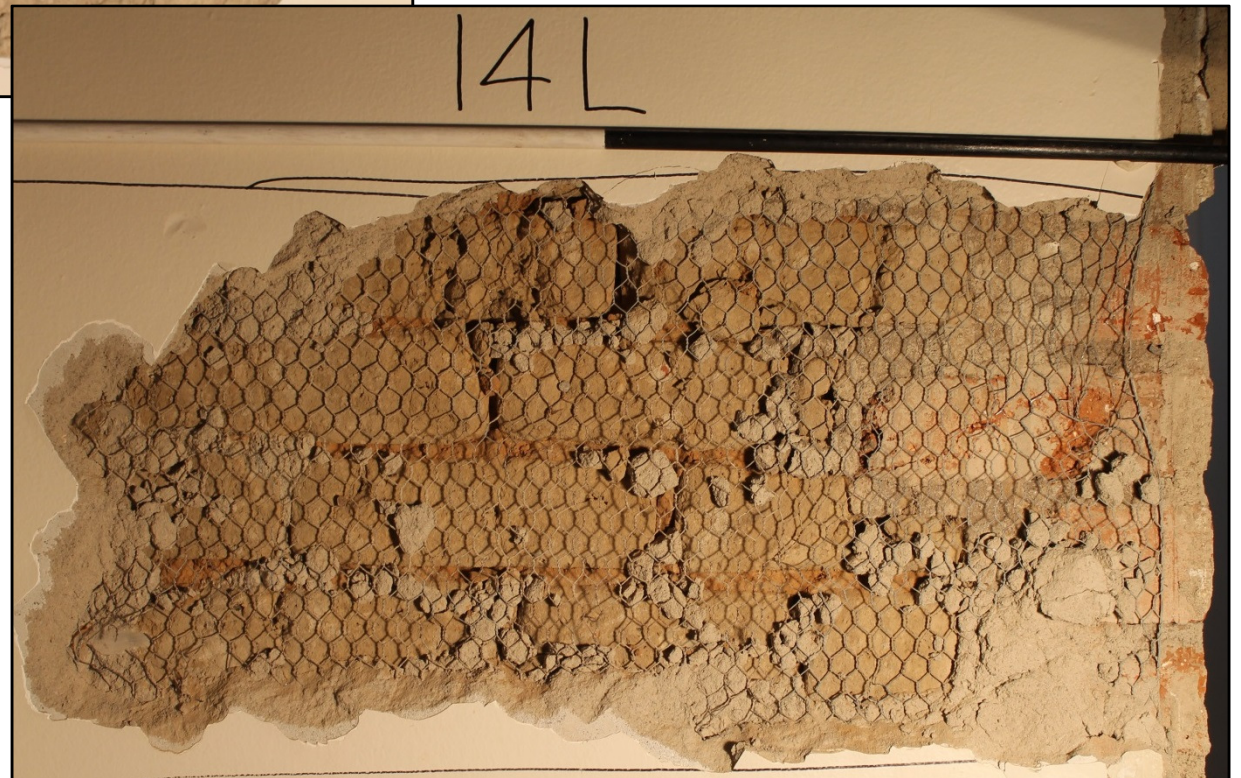


Figure 51: Thick plaster over chicken wire. The bricks are a pale olive brown bricks with red mud mortar.

Figure 52: Soft olive brown bricks with red mud mortar under chicken wire. The corner of the wall has been strengthened with a harder red brick.





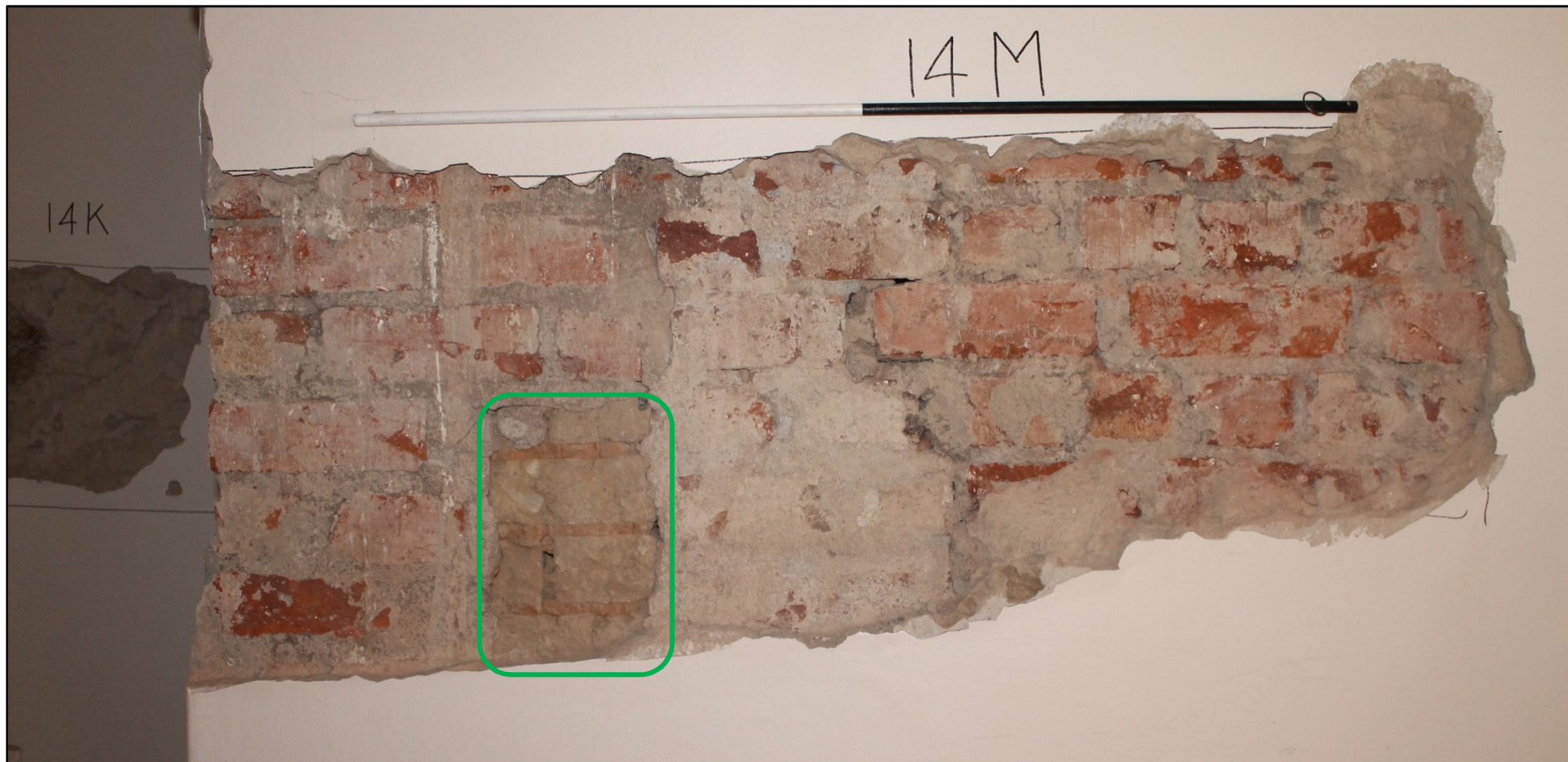


Figure 53: Strip 14M is comprised predominantly of fired red brick with white flecks and grey cement mortar, but there is evidence of a small section of olive brown bricks and red mud mortar inside the green rectangle.

# COTTAGE 15

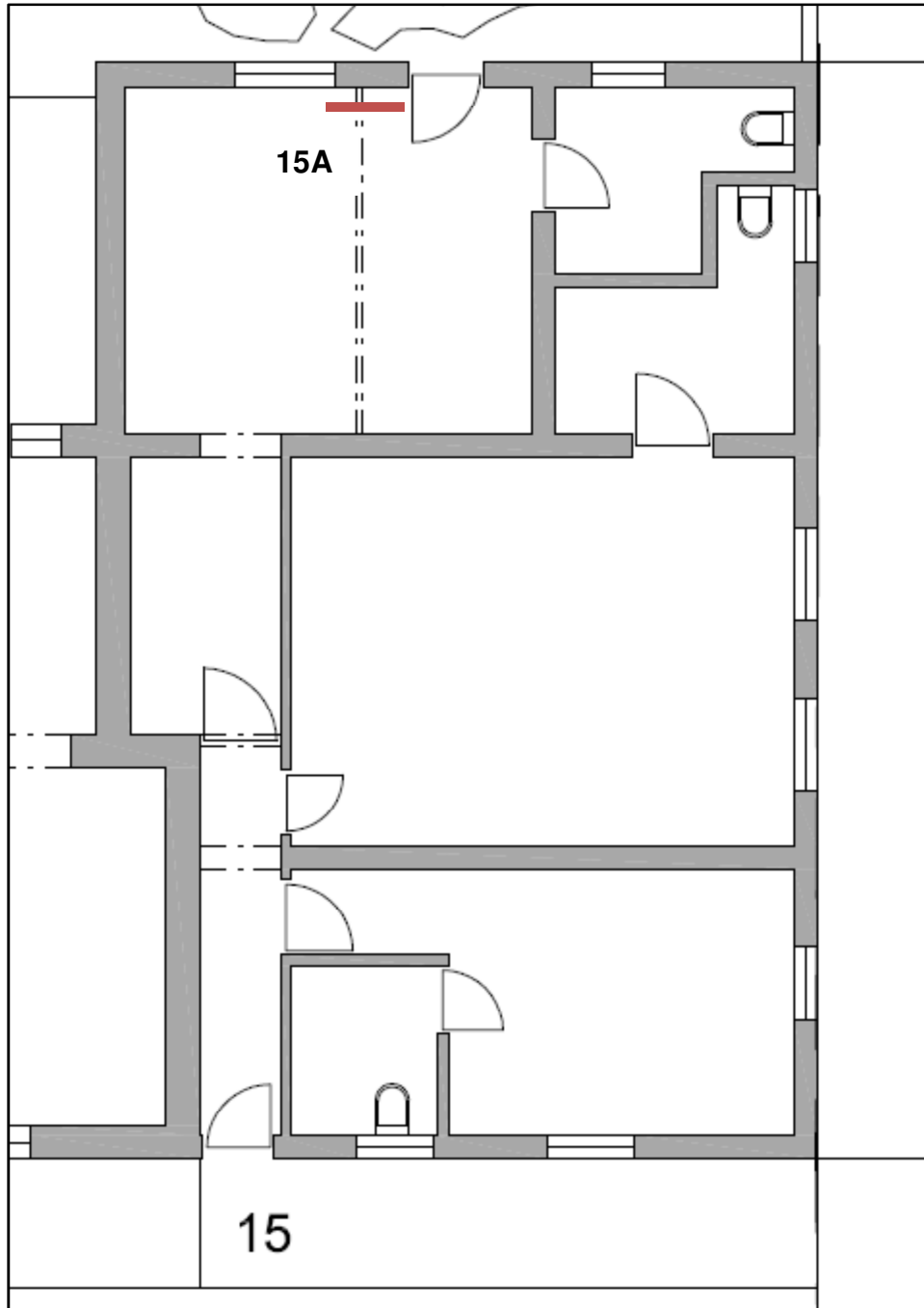


Figure 54: Section of walling between existing door and window shows the original wall of red brick and mud mortar and recent alterations to insert the window and door.