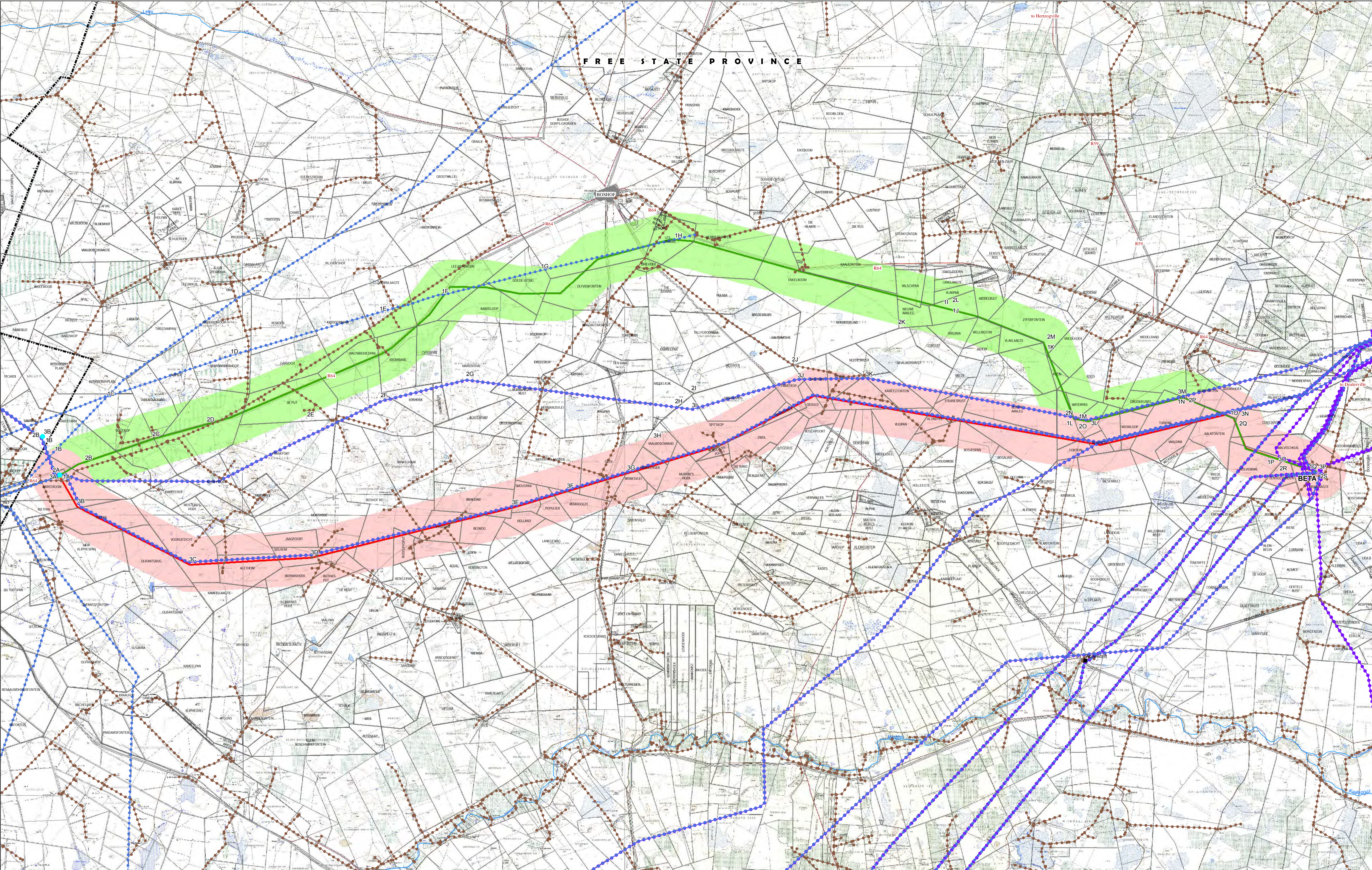


(400kV powerline from Beta to Boundary, including the upgrade of the existing Beta Tx Substation as well as the construction of a new Boundary Tx Substation adjacent to the existing Boundary Dx Substation)



■ Towns / Places	■ Dams	■ Protected areas	▲ Existing Beta Tx Substation – to be upgraded	— Alternative One Route	— Route One Corridor (Preferred)
--- HV Distribution power lines	--- Rivers	--- Provincial Borders	▲ New Boundary Tx Substation to be constructed adjacent to the existing Boundary Dx Substation	— Alternative Two Route	— Route Two Corridor (Alternative)
--- Distribution power lines	■ Major Towns			— Roads	
--- Transmission power lines	■ Farms				

0 1.25 2.5 5 7.5 10 12.5 Kilometers

© albert.froneman@gmail.com - 10 Augustus 2015 - Locality_maps.mxd
1:50 000 topographical maps:
2825DA, 2825DC, 2825CB, 2825CD, 2825CA, 2825CC, 2824DB, 2824DD, 2824BD, 2825AC, 2825AD, 2825BC