

APPENDIX B: GESTOPTEFONTEIN HILL ROCK ART



Figure 1. Surveying Slide Rock, a massive slab on the western slope of Gestoptefontein Hill. The area was divided into 1 m squares, each of which was searched for rock markings and then photographed.



Figure 2. Detail of rock art on Slide Rock. the rock has been smoothed. Note the grooves, which are a feature of Gestoptefontein Hill and other GDC sites.



Figure 3. Each occurrence of rock marking on Gestoptefontein Hill was numbered and labelled and then mapped.



Figure 4. Mapping the rock art on Gestoptefontein Hill using Wonderstone Limited GPS equipment.



Figure 5. Two important engraved slabs (SW14NE01 & SW14NE02) on the western slope of Gestoptefontein Hill.



Figure 6. Detail of SW14NE01, a possible depiction of a Rain animal



Figure 7. Detail of SW14NE02, an engraving of a bird (perhaps a bustard), Khoe-San ornaments, and designs.



Figure 8. Rock art removal from Slide Rock. No further details available as to who removed the rock art and when it was removed.



Figure 9. Characteristic scratch marks occur on all the GDC outcrops. Khoe-Dan visitors to the outcrops probably scratched the rock in order to get fine powdered wonderstone with which to decorate themselves.

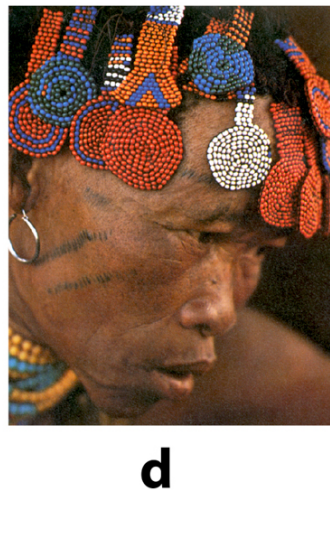
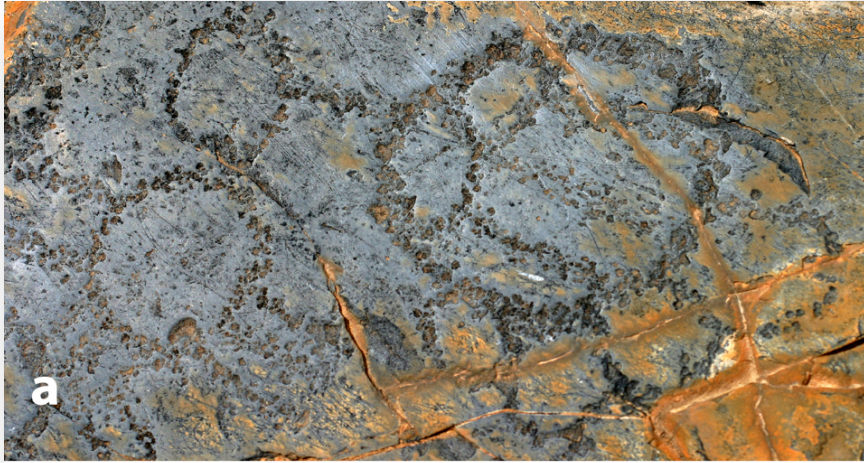


Figure 10. Pecked headdress motif similar to one worn by a Khoe-San woman.

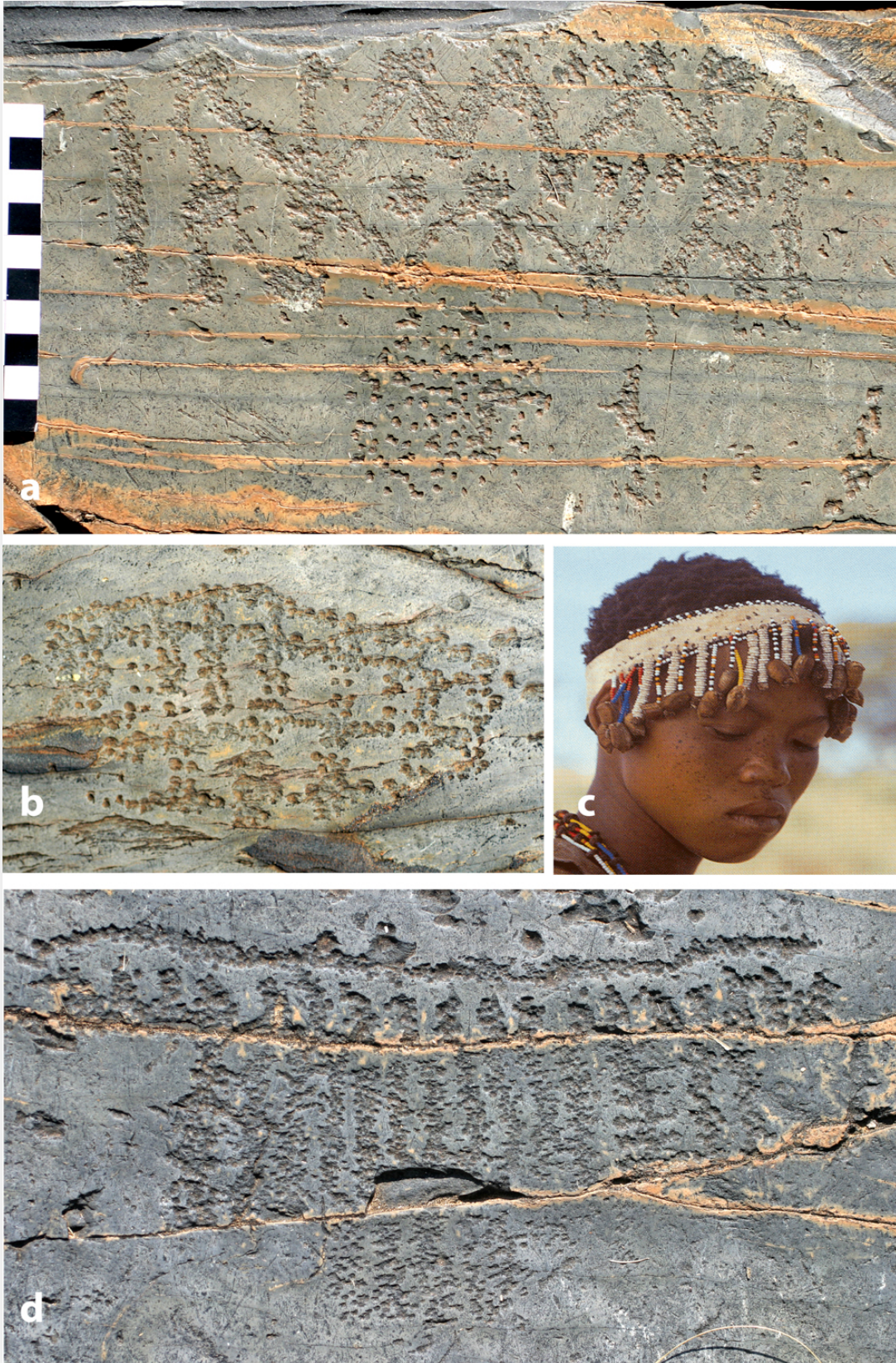


Figure 10. pecked headband (a,b & d) similar to tasselled headband of khoe-san women.

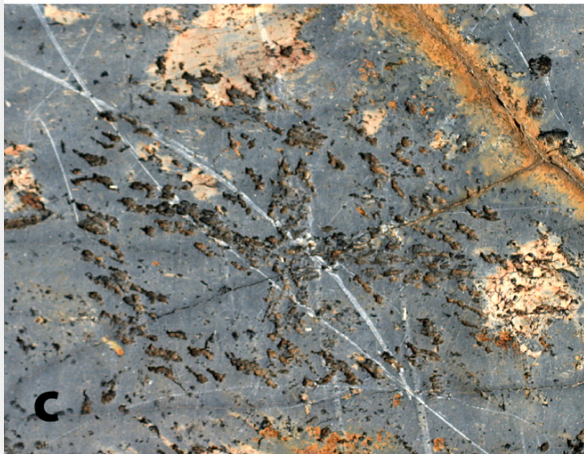


Figure 11. comparison of gdc motifs with khoe-san facial designs.

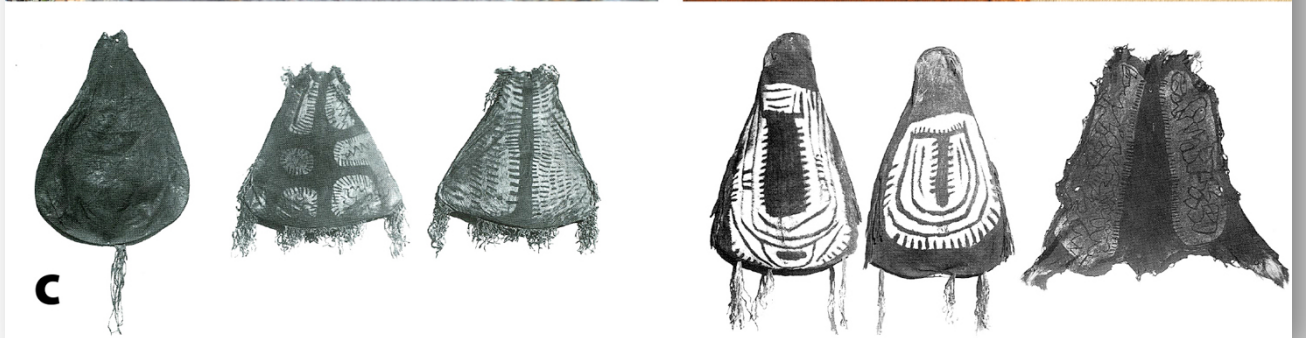


Figure 12. Pecked design resembles a design on a Khoe-San bag.

Figure 13

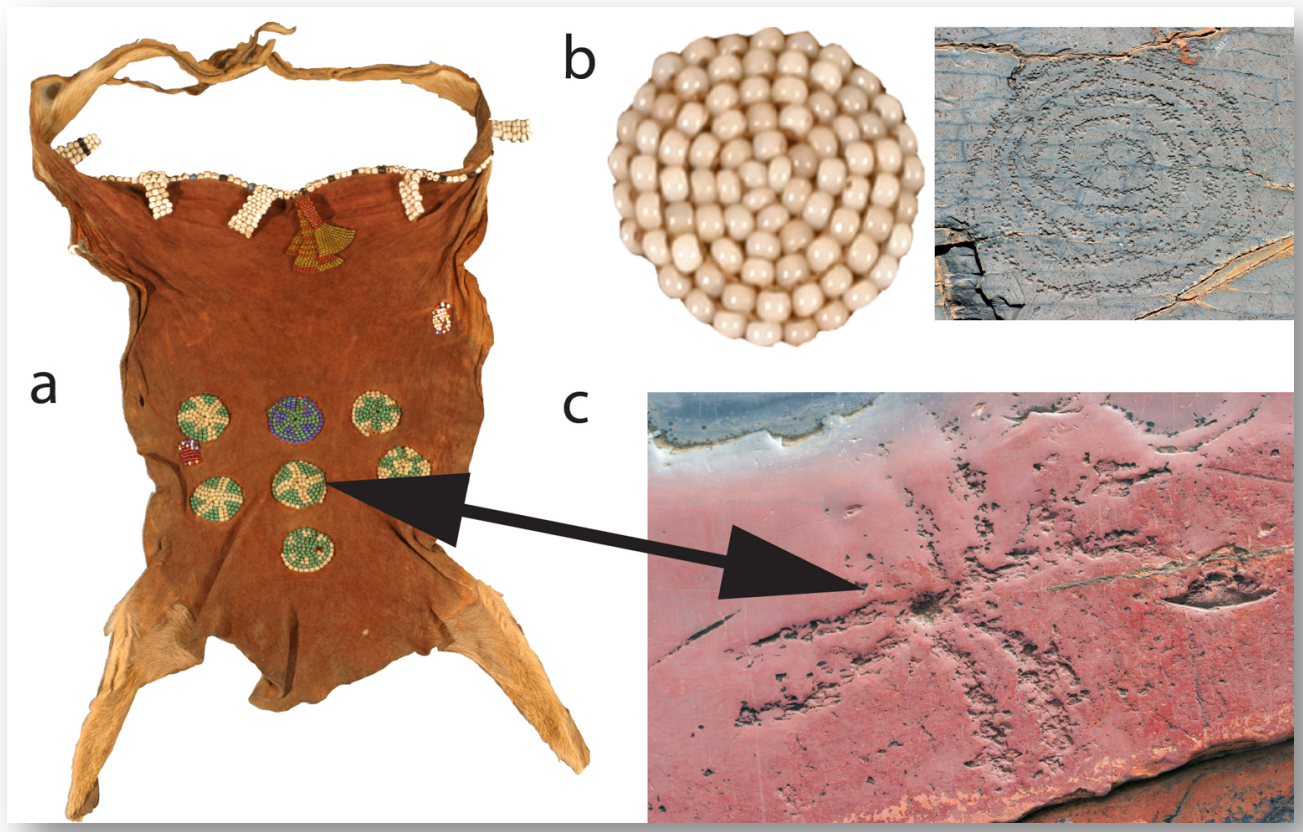


Figure 14. Some GDC motifs closely resemble beaded apron decorations.



FIGURE 7.14. Tasselled aprons in the ethnographic collection of the Iziko South African Museum.

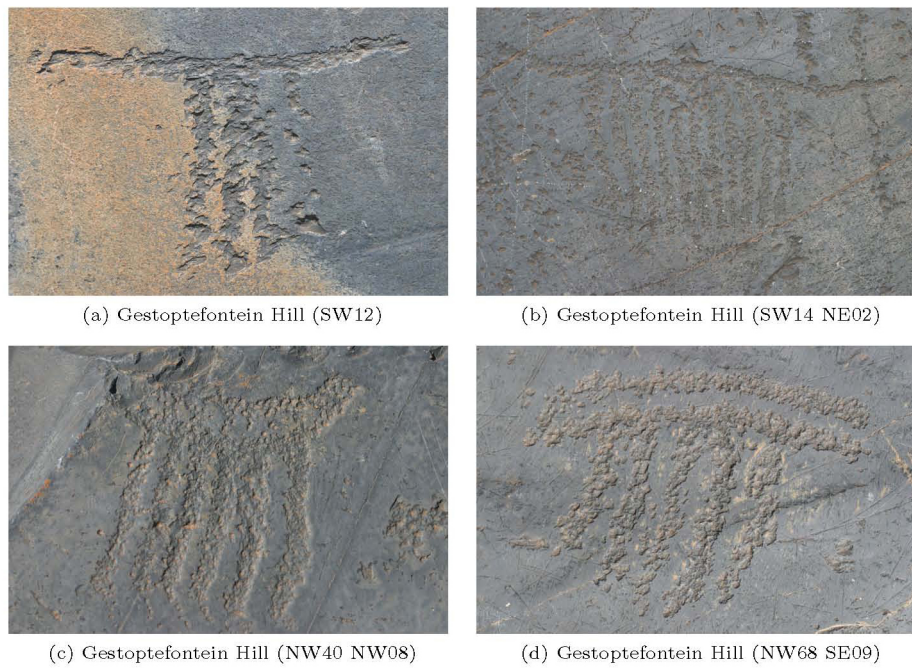


Figure 15. Comparison of tasselled aprons from a museum collection and engravings of tasselled aprons from Gestoptefontein Hill.