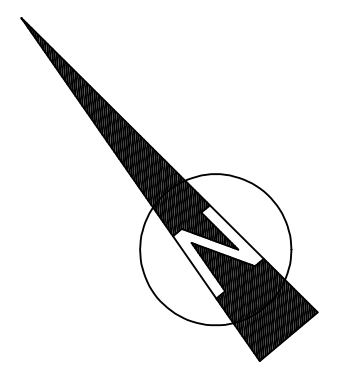


- TEST HOLE
- CAMELTHORN TREE
- WITGAT TREE



GENERAL

- THE CONTRACTOR IS RESPONSIBLE FOR ENSURING THAT ALL MATERIALS AND WORKMANSHIP CONFORM WITH THE DETAILS AND SPECIFICATIONS SHOWN ON THIS DRAWING, AND ALL RELEVANT SABS SPECIFICATIONS, IRRESPECTIVE OF WHETHER THE ENGINEER HAS INSPECTED THE WORKS ON SITE OR NOT.
- ALL DIMENSIONS AND LEVELS TO BE CHECKED ON SITE AND CORRELATED WITH THE ENGINEER'S DRAWINGS BEFORE CONSTRUCTION COMMENCES.
- NO SCALING WITH SCALE RULER FROM THE DRAWING IS PERMITTED. THE CONTRACTOR MUST ENSURE THAT HE GETS THE CORRECT DIMENSIONS FROM THE ENGINEER BEFORE CONSTRUCTION COMMENCES.

DRAWING NOT PRINTED TO SCALE
REDUCED FROM A1 TO A3.

CLIENT PLAN NUMBER			
REFERENCE DRAWINGS			
NUMBER	REVISION	DRAWING DESCRIPTION	
APPROVED BY COUNCIL / CLIENT			
CITY ENGINEER / CLIENT		REG. NO.	DATE
AMENDMENTS CODE			
A.B.C... / BEFORE TENDER	/A: BY CLIENT		
0 / TENDER DRAWING	/B: BY ARCHITECT		
1,2,3... / AFTER TENDER	/C: BY MECHANICAL OR ELECTRICAL		
Z / AS BUILT	/D: BY BVI		
	/E: BY OTHER ()		
DATE	INITIAL	No./CODE	REVISION DESCRIPTION

COPYRIGHT
THIS DRAWING IS THE PROPERTY OF BVI - CONSULTING ENGINEERS IS PRIVATE AND CONFIDENTIAL AND IS SUPPLIED ON THE EXPRESS UNDERSTANDING THAT IT IS NOT TO BE USED FOR ANY PURPOSE OR COPIED OR COMMUNICATED TO ANY PERSON WITHOUT THE WRITTEN PERMISSION OF THE PROPRIETORS.

OFFICES			
PROVINCE	OFFICE	PHONE	E-MAIL
Gauteng	Pretoria	(012) 346-0599	pt@bvi.co.za
Free State	Baobabfontein	(051) 447-1137	bf@bvi.co.za
	Walton	(057) 353-2459	wl@bvi.co.za
Northern Cape	Upington	(054) 337-6600	up@bvi.co.za
	Springbok	(027) 713-6990	sp@bvi.co.za
KwaZulu Natal	Durban	(031) 246-8361	dn@bvi.co.za
	Empangeni	(033) 788-0290	em@bvi.co.za
Eastern Cape	Port Elizabeth	(041) 373-4343	pe@bvi.co.za
Western Cape	Cape Town	(021) 627-7000	ct@bvi.co.za
Visit or contact us online at www.bvi.co.za			

ENGINEERING
PROCUREMENT
MANAGEMENT

BBBEE Level 2

Upington Office
Registration No. 15660/2008/07

CLIENT
PROJECT

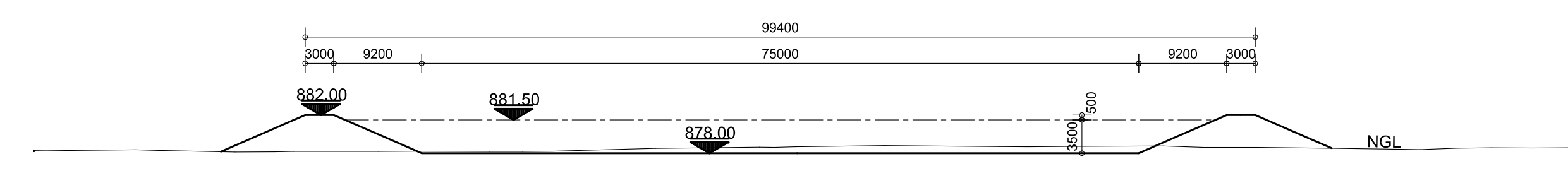
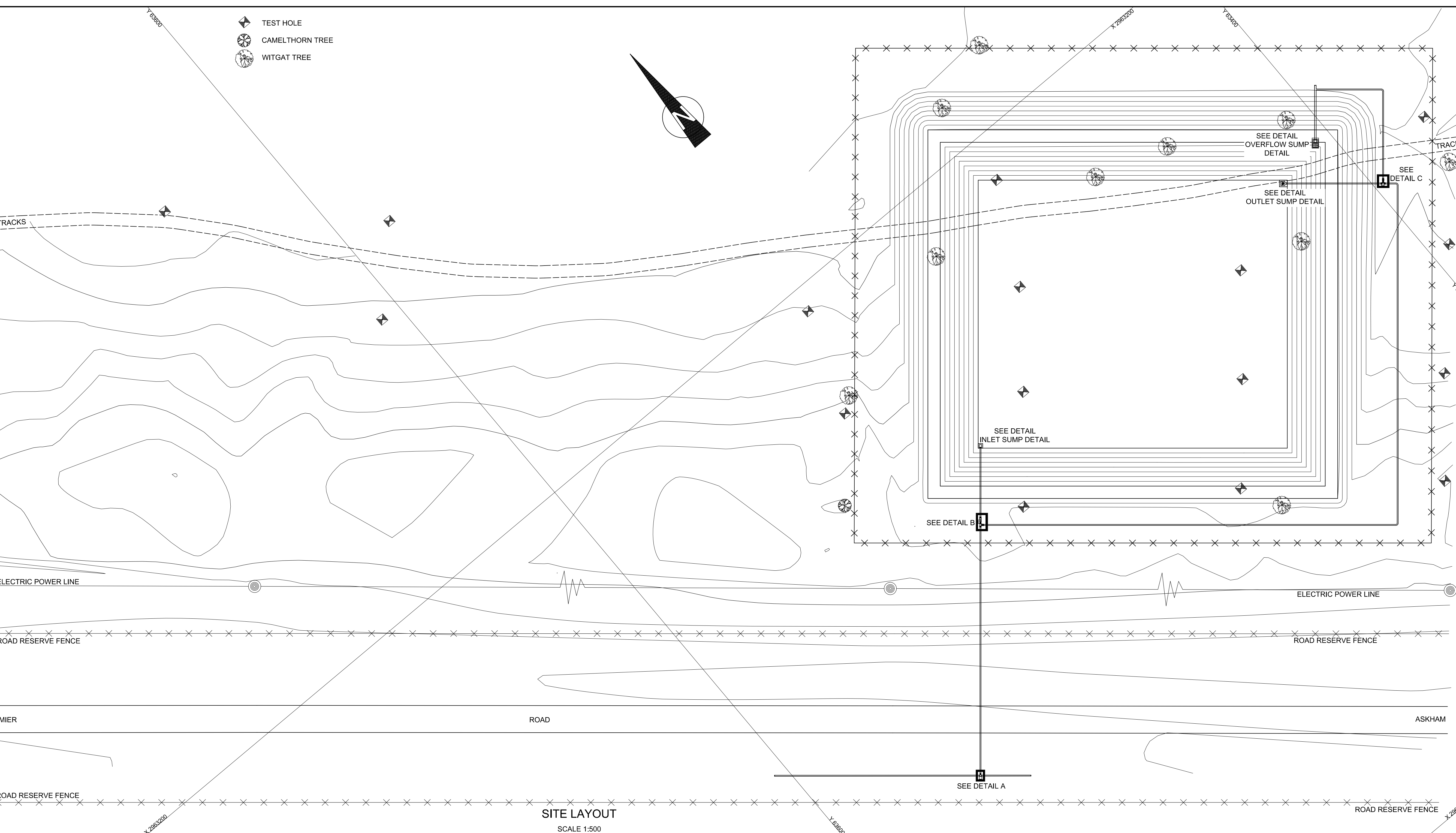
**KALAHARI-EAST
STORAGE DAM**

DRAWING TITLE

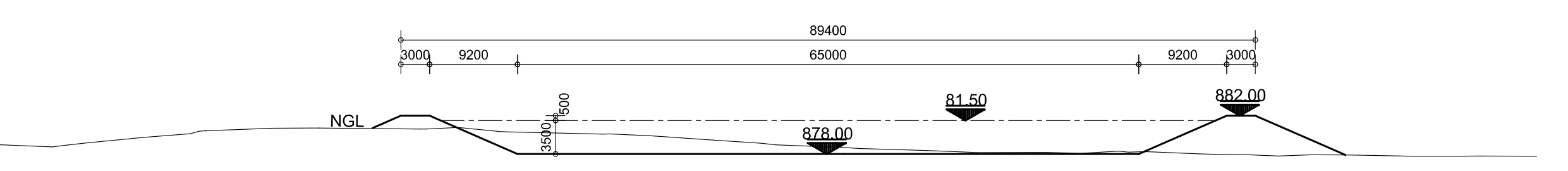
**SITE LAYOUT
& SECTIONS**

APPROVED BY BVI		
-----------------	--	--

ENGINEER/TECHNOLOGIST		REG. NO.	DATE
SCALE	AS SHOWN	DRAWN	J. Pretorius
DESIGNED	M. du Plessis	CHECKED	F.D. Maritz
PLAN NUMBER		REVISION NO.	DATE SAVED
U10424C-100-01		A	21 Aug 2014



LONG SECTION
SCALE 1:500



CROSS SECTION
SCALE 1:500

SLOPE OF STORAGE DAM WALLS (INSIDE & OUTSIDE) = 1 : 2.3
 STORAGE DAM FULL WATER-SURFACE LEVEL = 3.50m
 STORAGE DAM WALL LEVEL = 4.00m
 STORAGE DAM CAPACITY = 20700.77m³
 STORAGE DAM FLOOR MEASUREMENTS = 75.00m x 65.00m
 STORAGE DAM FULL WATER-SURFACE MEASUREMENTS = 91.10m x 81.10m
 STORAGE DAM TOP WALL MEASUREMENTS INSIDE = 93.40m x 83.40m
 STORAGE DAM TOP WALL MEASUREMENTS OUTSIDE = 99.40m x 89.40m
 STORAGE DAM LINER AREA = 9149.87m²
 STORAGE DAM FLOATING COVER AREA = 9149.87m²
 CUT VOLUME = 5176.99m³ FILL VOLUME = 11731.87m³