

Exemption of a Phase 1 Heritage Impact Assessment for proposed new 7 ha pivot site on the farm Eenboom 208, Colesberg, NC Province.

Site: Farm Eenboom 208

District: Colesberg

Map Ref.: 1: 50 000 topographic map 3125 AB Ysterberg

Site coordinates: S 31°00'55.9" E 25°27'03.5"

The footprint consists of a 7 ha area selected for a new pivot planned on the farm Eenboom 208 (**Fig 1 & 2**). The area consists of low relief, sandy terrain that has been degraded by prior farming activities (**Fig. 3**). Existing roads provide access to the site. Potential archaeological impact at each of the proposed site is considered to be non-existent.

Underlying geology at the site consist of potentially fossil-bearing Adelaide Subgroup (Beaufort Group, Karoo Supergroup), but outcrop is capped by by well-developed, superficial deposits of geologically recent (Quaternary) overburden. Given the nature of the proposed development (irrigation and agricultural use) the likelihood of palaeontological impact on bedrock sediments underneath the agricultural overburden is considered to be extremely low.

It is recommended that the proposed development is exempt from a Phase 1 Heritage Impact Assessment.

Yours truly,



Dr Lloyd Rossouw
National Museum Bloemfontein
Tel. 051 4479 609
Cell. 0842505992
lloyd@nasmus.co.za

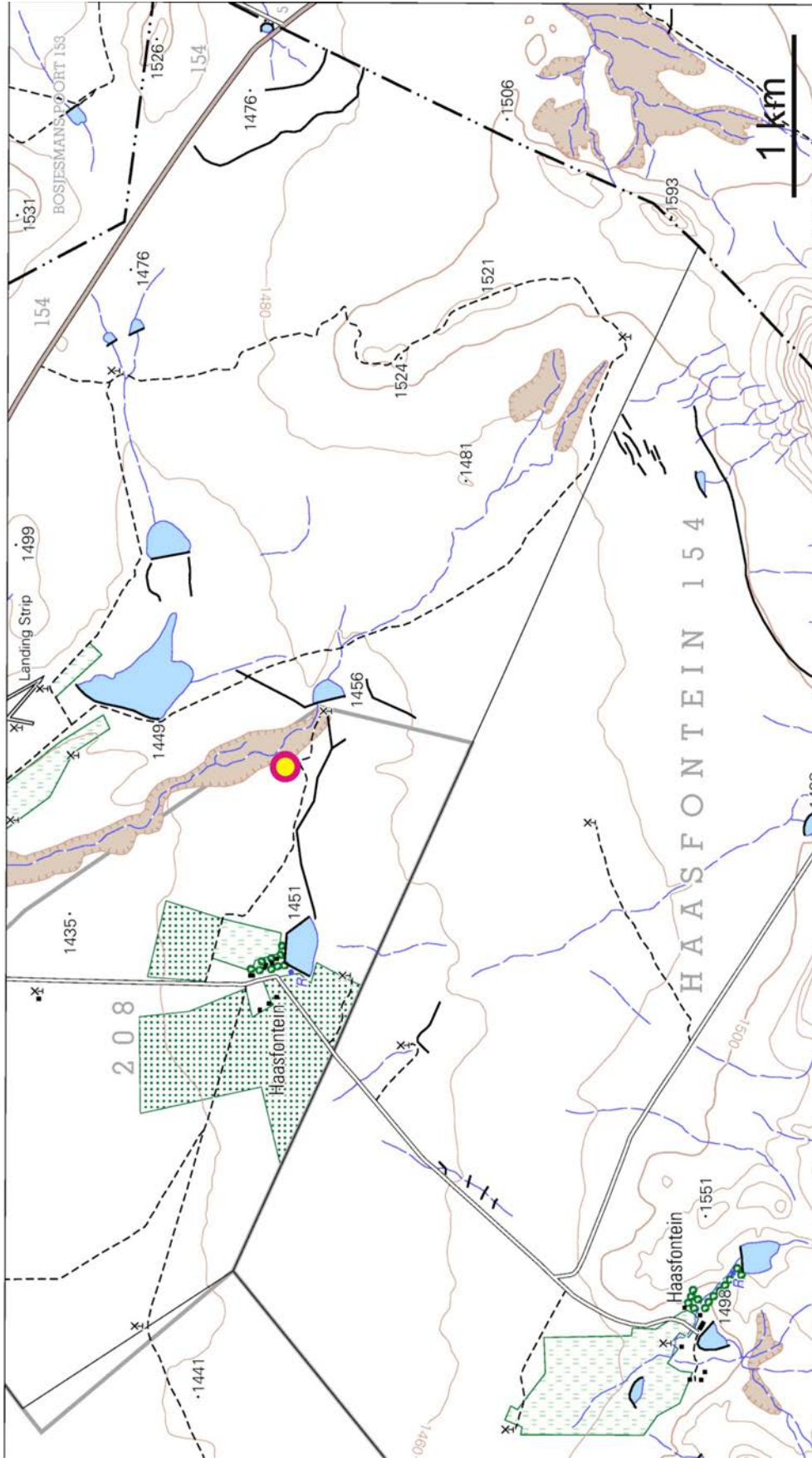


Figure 1. Map of the proposed pivot site on farm Haasfontein 154 (portion of 1:50 000 scale topographic map 3125 AB Ysterberg).



Figure 2. Aerial view of the proposed pivot locality.



Figure 3. General view of the pivot site, looking north.