

# Exemption of a Phase 1 Archaeological and Palaeontological Impact Assessment for the Remainder of Plot 10, Spitskop Smallholdings, Bloemfontein, Free State Province\*.

---

Site: Plot 10, Spitskop Smallholdings, Bloemfontein District

Map Ref.: 2926 AA Bloemfontein

Site Coordinates: 29° 5'25.62"S 26° 8'50.89"E (see **Fig. 2**)

The application relates to a proposed township development at Plot 10, Spitskop Smallholdings (**Fig. 1**). The ~4 ha site is situated in Waterberg Avenue in Langenhovenpark, Bloemfontein (**Fig. 2**). Historical maps of the area (c. 1948 and 1951, respectively) record no dwellings within the study area and a brief survey of the terrain indicates that, the site has been extensively disturbed by previous farming activities, with no evident traces of historically significant structures (**Fig. 3**). Potential archaeological impact at the site is considered to be non-existent. It is recommended that a full Phase 1 Archaeological Impact Assessment is not required as a prerequisite for the planned development.

The palaeontological footprint in the region is primarily represented by Permian Karoo fossils preserved within bedrock sedimentary strata, as well as late Quaternary mammalian fossils preserved within superficial alluvial deposits (e.g. river gravels and overbank sediments). The site is located within an outcrop area of moderately sensitive Eccia Group shales. A brief inspection of the site indicated that the underlying geology is capped by well-developed superficial deposits that are largely made up of (palaeontologically sterile) Quaternary wind-blown sands and residual soils (**Fig. 4**). Given the depth of the overburden, which is not considered to be palaeontologically sensitive, it is recommended that the planned development is exempt from a full Phase 1 Palaeontological Impact Assessment.

Yours truly,



Lloyd Rossouw

National Museum Bloemfontein

Tel. 051 4479 609

Cell. 0842505992

[lloyd@nasmus.co.za](mailto:lloyd@nasmus.co.za)

\* Report prepared for Qsite Quantity Surveyors, PO Box 38998, Langenhovenpark, Bloemfontein 9330



Figure 1. Aerial view of Plot 10, Spitskop Smallholdings.



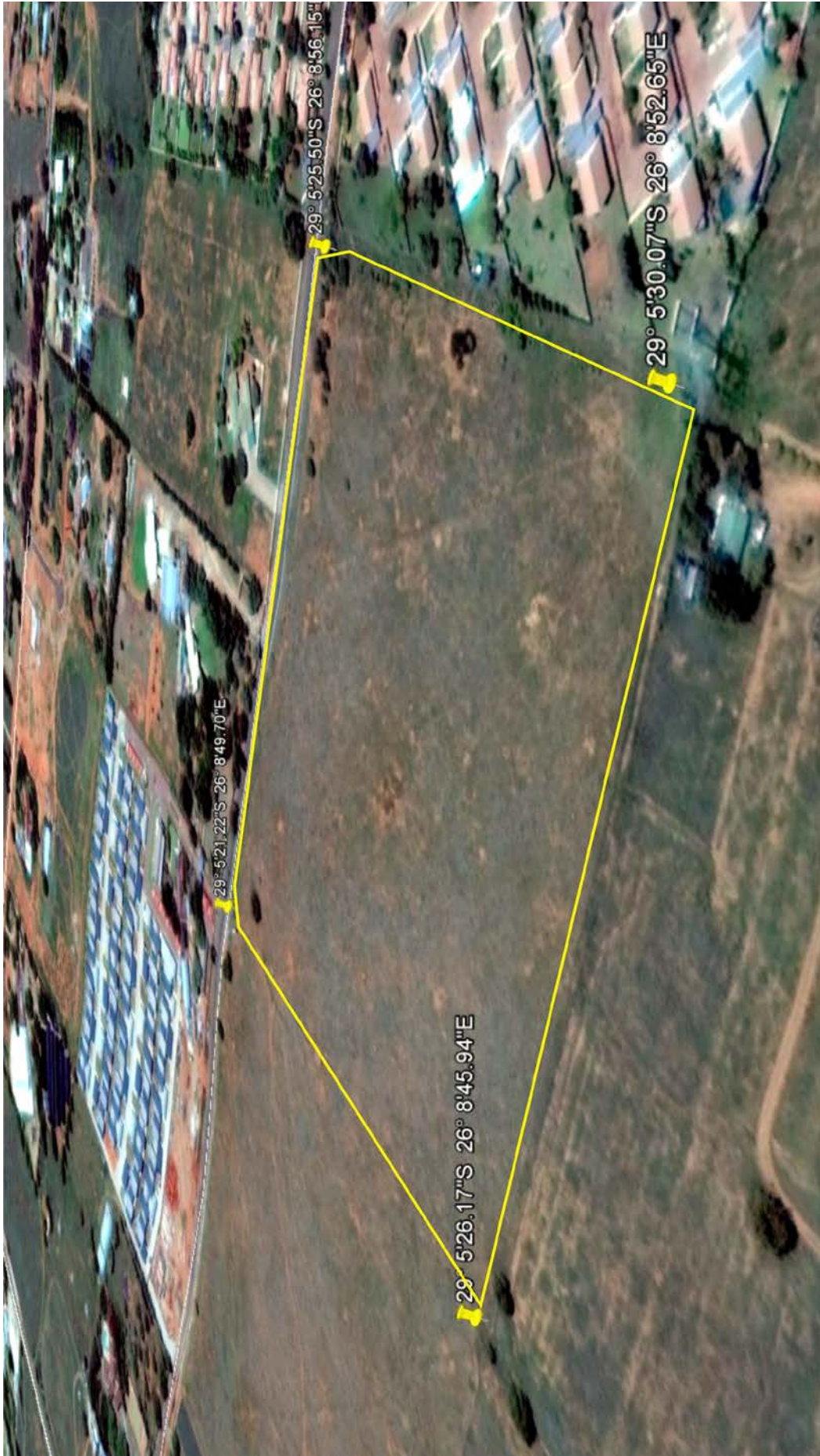


Figure 2. Aerial view of the terrain, looking north.



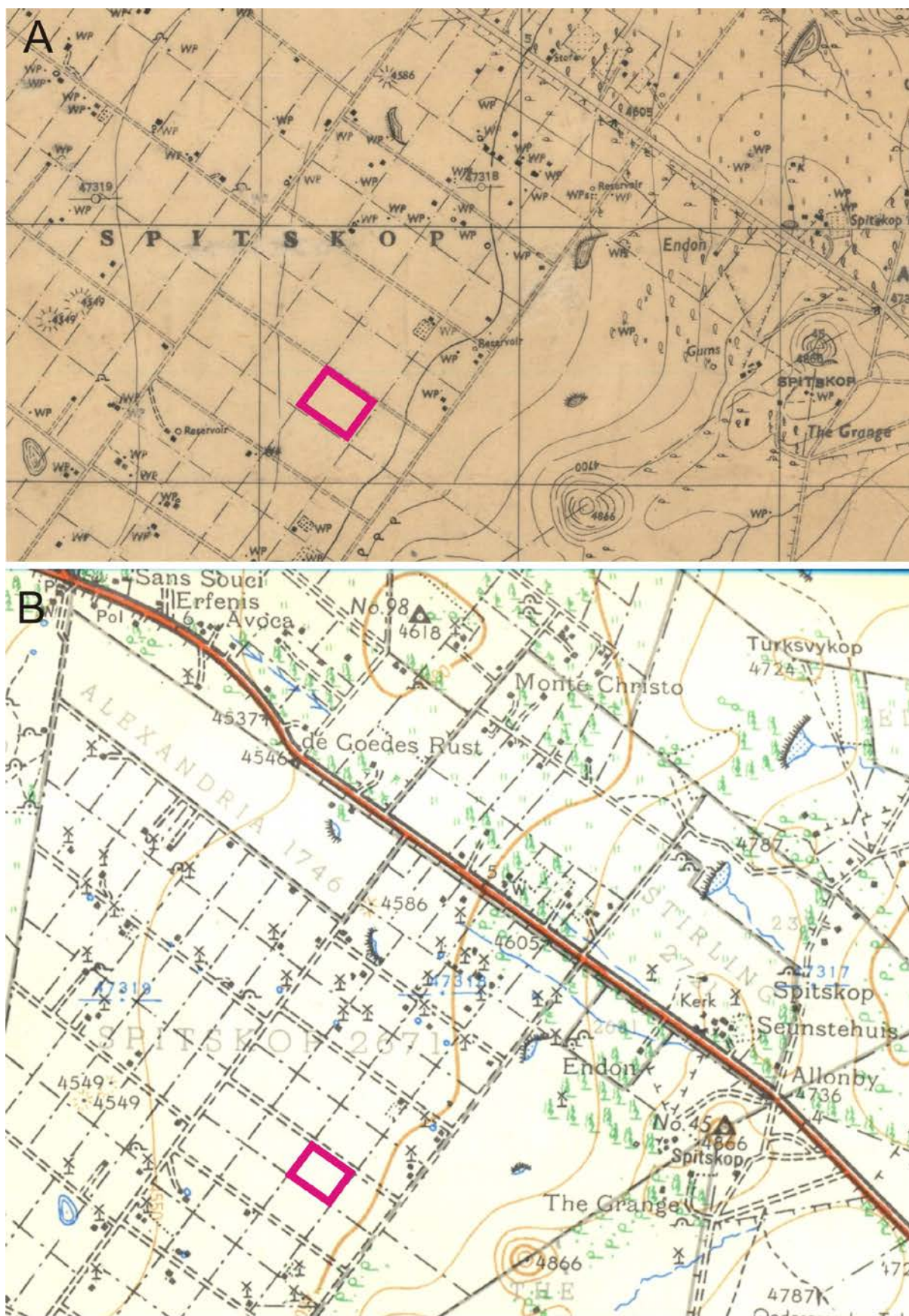


Figure 3. Remainder of Plot 10 marked on two different historical topographic maps, c. 1948 (A) and 1951 (B).





Figure 4. Panoramic view of the site, looking south-southeast.