

Exemption from Phase 1 Heritage Impact Assessment: Plot 6 Bloemspruit, Bloemfontein Free State Province.

Report prepared by
Paleo Field Services, PO Box 38806, Langenhovenpark, 9330

Site: Plot 6 Bloemspruit, Bloemfontein

District: Mangaung Metropolitan Municipality

Map Ref.: 2926AB Maselspoort

Site Coordinates: 29° 8'17.35"S 26°16'24.04"E

Proposed development calls for residential expansion on Plot 6, Bloemspruit in Bloemfontein (**Fig. 1**). The site is located in Thaba Nchu Road about 5 km southeast of the Bloemfontein CBD (**Fig. 2**). The Bloemspruit residential smallholdings were established more than sixty years ago (**Fig. 3**), but many of the original residential structures have been replaced by commercial developments and industrial properties (**Fig. 4**). The affected area is covers 4 ha of severely degraded land (**Fig. 5**). Building structures potentially older than 60 years of age is present at the site, but are not considered historically significant by the author (**Fig 6**. GPS coordinates 29° 8'18.42"S 26°16'27.00"E). Existing roads already provide access to the site. It is the opinion of this author that the building structures are assigned a site rating of *Generally Protected B (GP.B, recording before destruction)*. The rest of the study area is assigned a site rating of *Generally Protected C*. It is advised that for the building structures, the developer follow proper procedures as stipulated in Section 34(1) of the National Heritage Resources Act 25 of 1999 [*“No person may alter or demolish any structure or part of a structure which is older than 60 years without a permit issued by the relevant provincial heritage resources authority”*], by applying for a destruction permit from the Free State Heritage Resources Authority (heritagefreestate.co.za); and that the layout of the building structures are properly mapped and photographed before destruction takes place.

The proposed development will take place on land formerly altered by modern industrial / commercial activities. Potential archaeological impact at each of the proposed site is considered to be non-existent.

Underlying geology at the site consists of potentially fossil-bearing Karoo Supergroup strata (Beaufort Group, Adelaide Subgroup) while superficial sediments are made up of residual soils of varying depth that are not considered to be palaeontologically significant in this case. The likelihood of palaeontological impact on bedrock sediments underneath the degraded overburden is considered to be extremely low given the latter's overall depth and the low topography terrain.

It is advised that the proposed development is exempt from further Heritage Impact Assessments pending outcome of listed recommendations.

References

Johnson *et al.* 2006. Sedimentary rocks of the Karoo Supergroup. In: M.R. Johnson, *et al.* (eds). The Geology of South Africa. Geological Society of South Africa, pp. 461 – 499.

DECLARATION OF INDEPENDENCE

I, Lloyd Rossouw, declare that I act as an independent specialist consultant. I do not have or will not have any financial interest in the undertaking of the activity other than remuneration for work as stipulated in the terms of reference and have no interest in secondary or downstream developments as a result of the authorization of this project.

Yours truly,

A handwritten signature in dark ink, appearing to read 'L Rossouw', with a stylized, cursive script.

05 / 09 / 2020

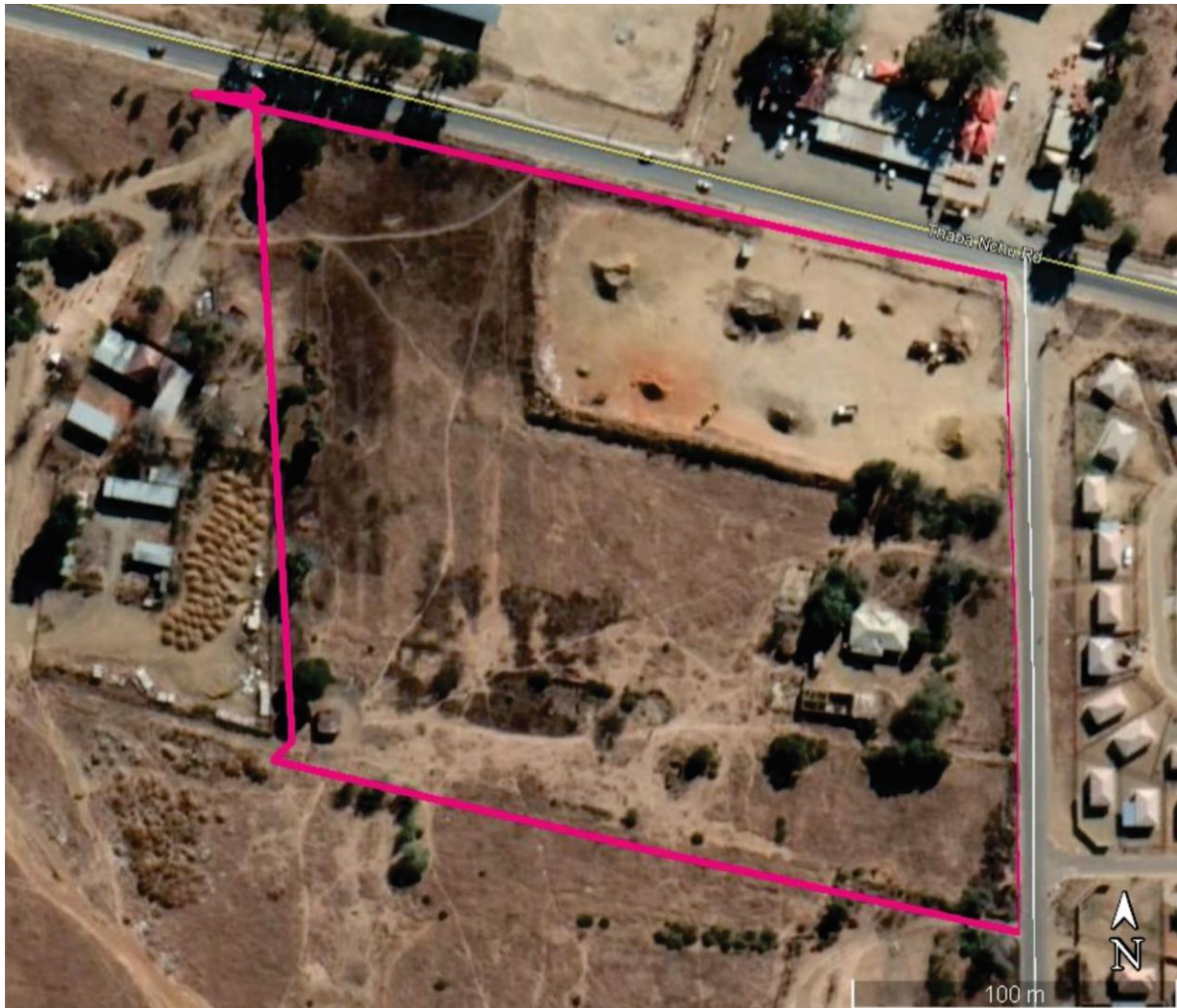


Figure 1. Aerial view of Plot 6, Bloemspruit.



Figure 2. Position of Plot 6 in relation to the Bloemfontein CBD.

Plot 6



Figure 3. Portion of 1:18000 scale topographic map 2926 C3 1-18000 Maselspoort compiled in 1952



Figure 4. General view of Plot 6, looking south from Thaba Nchu Road.



Figure 5. General view of the site, looking northwest (above) and east (below).

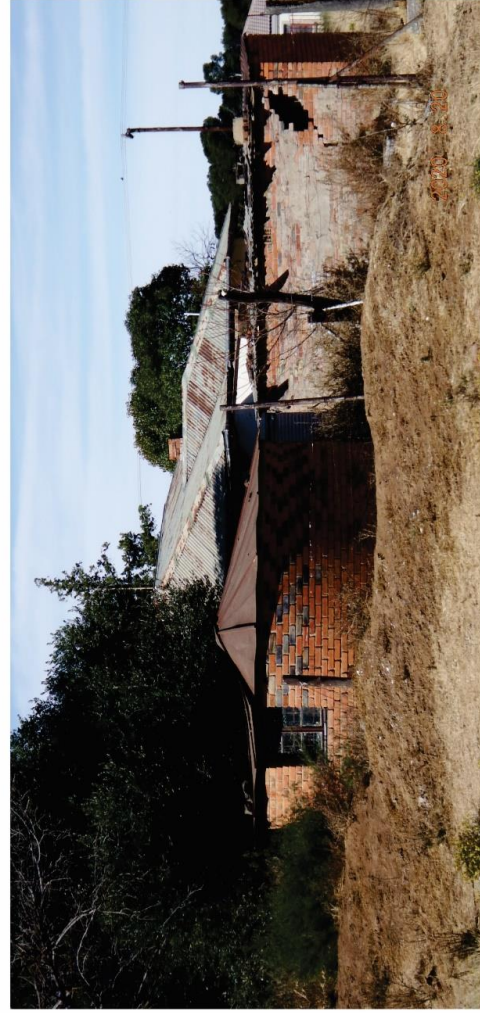


Figure 6. Building structures potentially older than 60 years of age at Plot 6, looking south (above) and east (below).