

# Exemption from a Phase 1 Heritage Impact Assessment for the Sterkwater Water Treatment Works facility, Bloemfontein, Free State Province\*.

---

Site: Sterkwater WTW, Bloemfontein.

Map Ref.: 2926 AB Maselspoort

Site Coordinates: 29°11'25.03"S 26°18'44.11"E

MDA Environmental Consultants requested a heritage impact assessment for Sterkwater WTW located south of Bloemfontein (**Fig. 1**). The site is partly underlain by palaeontologically insignificant Karoo dolerite bedrock and geologically recent superficial sediments made up of alluvium associated with the nearby Renosterspruit. Potential archaeological impact at the site is considered non-existent due to the disturbed nature of the area (**Fig. 2**). It is also considered to be of low palaeontological sensitivity (**Fig. 3**). The soil overburden is not palaeontologically vulnerable and the likelihood of palaeontological impact on *in situ* bedrock sediments is considered to be negligible.

It is recommended that the proposed development is exempted from a Phase 1 heritage impact assessment.

---

\* Report prepared for MDA Environmental Consultants PO Box 20298, Willows 9320 by L. Rossouw, National Museum Bloemfontein, c/o Aliwal and Charles Street, Bloemfontein 9300.

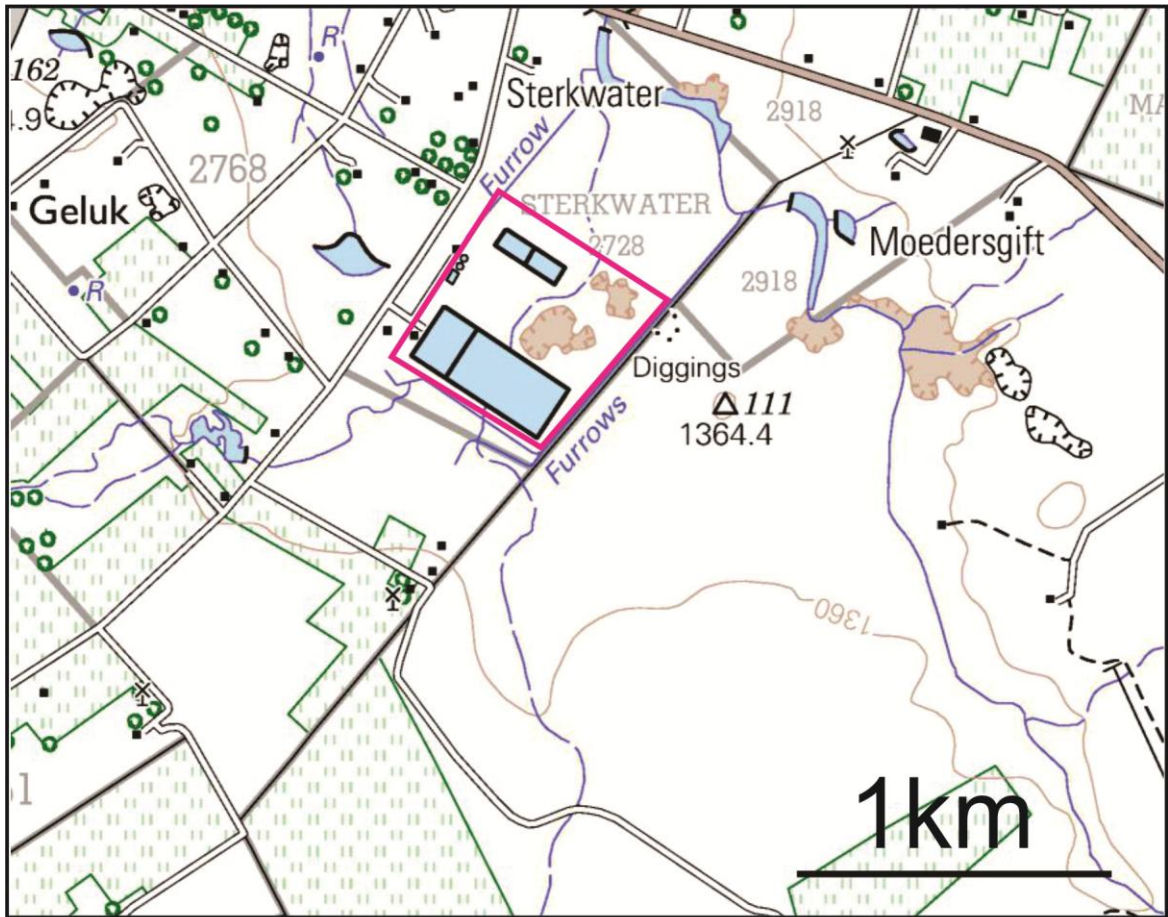


Figure 1. Site map (portion of 1:50 000 scale topographical map 2926 AB Maselspoort).



Figure 2. Aerial view of the site.



Figure 3. The site is located within an area considered to be of low palaeontological sensitivity (blue area, SAHRIS 2014).