



# PALAEONTOLOGICAL DESKTOP ASSESSMENT

LUCKHOFF SOLAR 2 PHOTOVOLTAIC  
SOLAR ENERGY FACILITY, NEAR  
LUCKHOFF, FREE STATE PROVINCE

2022

COMPILED FOR:

ENVIRONAMICS ENVIRONMENTAL CONSULTANTS



## Declaration of Independence

I, Elize Butler, declare that –

General declaration:

- I act as the independent palaeontological specialist in this application
- I will perform the work relating to the application in an objective manner, even if this results in views and findings that are not favorable to the applicant
- I declare that there are no circumstances that may compromise my objectivity in performing such work;
- I have expertise in conducting palaeontological impact assessments, including knowledge of the Act, Regulations and any guidelines that have relevance to the proposed activity;
- I will comply with the Act, Regulations, and all other applicable legislation;
- I will take into account, to the extent possible, the matters listed in section 38 of the NHRA when preparing the application and any report relating to the application;
- I have no, and will not engage in, conflicting interests in the undertaking of the activity;
- I undertake to disclose to the applicant and the competent authority all material information in my possession that reasonably has or may have the potential of influencing - any decision to be taken with respect to the application by the competent authority; and - the objectivity of any report, plan, or document to be prepared by myself for submission to the competent authority;
- I will ensure that information containing all relevant facts in respect of the application is distributed or made available to interested and affected parties and the public and that participation by interested and affected parties is facilitated in such a manner that all interested and affected parties will be provided with a reasonable opportunity to participate and to provide comments on documents that are produced to support the application;
- I will provide the competent authority with access to all information at my disposal regarding the application, whether such information is favorable to the applicant or not
- All the particulars furnished by me in this form are true and correct;
- I will perform all other obligations as expected a palaeontological specialist in terms of the Act and the constitutions of my affiliated professional bodies; and



- I realize that a false declaration is an offense in terms of regulation 71 of the Regulations and is punishable in terms of section 24F of the NEMA.

**Disclosure of Vested Interest**

I do not have and will not have any vested interest (either business, financial, personal, or other) in the proposed activity proceeding other than remuneration for work performed in terms of the Regulations.

**PALAEONTOLOGICAL CONSULTANT:**

Banzai Environmental (Pty) Ltd

**CONTACT PERSON:**

Elize Butler

Tel: +27 844478759

Email: info@banzai-group.com

**SIGNATURE:**



The heritage impact assessment report has been compiled considering the National Environmental Management Act 1998 (NEMA) and Environmental Impact Regulations 2014 as amended, requirements for specialist reports, Appendix 6, as indicated in the table below.

**Table 1: Checklist for Specialist studies in conformance with Appendix 6 of the EIA Regulations of 2014 (as amended).**

Requirements of Appendix 6 – GN R326 EIA Regulations of 7 April 2017	The relevant section in the report	Comment where not applicable.
1.1(1) (a) (i) Details of the specialist who prepared the report	Page ii and Section 3 of Report – Contact details and company and Appendix A	-
(ii) The expertise of that person to compile a specialist report including a curriculum vita	Section 3 – refer to <b>Appendix A</b>	-
(b) A declaration that the person is independent in a form as may be specified by the competent authority	Page ii of the report	-
(c) An indication of the scope of, and the purpose for which, the report was prepared	Section 5 – Objective	-
(cA) An indication of the quality and age of base data used for the specialist report	Section 6 – Geological and Palaeontological history	-
(cB) a description of existing impacts on the site, cumulative impacts of the proposed development and levels of acceptable change;	Section 10	-



**Table 1: Checklist for Specialist studies in conformance with Appendix 6 of the EIA Regulations of 2014 (as amended).**

Requirements of Appendix 6 – GN R326 EIA Regulations of 7 April 2017	The relevant section in the report	Comment where not applicable.
(d) The duration, date and season of the site investigation and the relevance of the season to the outcome of the assessment	Section 1; & 11	
(e) a description of the methodology adopted in preparing the report or carrying out the specialised process inclusive of equipment and modelling used	Section 8 Approach and Methodology	-
(f) details of an assessment of the specifically identified sensitivity of the site related to the proposed activity or activities and its associated structures and infrastructure, inclusive of a site plan identifying site alternatives;	Section 1 & 11	
(g) An identification of any areas to be avoided, including buffers	Section 1 & 11	
(h) A map superimposing the activity including the associated structures and infrastructure on the environmental sensitivities of the site including areas to be avoided, including buffers;	Section 6 – Geological and Palaeontological history	
(i) A description of any assumptions made and any uncertainties or gaps in knowledge;	Section 8.1 – Assumptions and Limitation	-
(j) A description of the findings and potential implications of such findings on the impact of the proposed activity, including identified alternatives, on the environment	Section 1 & 11	



**Table 1: Checklist for Specialist studies in conformance with Appendix 6 of the EIA Regulations of 2014 (as amended).**

Requirements of Appendix 6 – GN R326 EIA Regulations of 7 April 2017	The relevant section in the report	Comment where not applicable.
(k) Any mitigation measures for inclusion in the EMPr	Section 1 & 11	
(l) Any conditions for inclusion in the environmental authorisation	Section 1 & 11	
(m) Any monitoring requirements for inclusion in the EMPr or environmental authorisation	Section 1 & 11	
(n)(i) A reasoned opinion as to whether the proposed activity, activities or portions thereof should be authorised and	Section 1 & 11	
(n)(iA) A reasoned opinion regarding the acceptability of the proposed activity or activities; and		
(n)(ii) If the opinion is that the proposed activity, activities or portions thereof should be authorised, any avoidance, management and mitigation measures that should be included in the EMPr, and where applicable, the closure plan	Section 1 & 11	-
(o) A description of any consultation process that was undertaken during the course of carrying out the study	N/A	Not applicable. A public consultation process was handled as part of the Environmental Impact



**Table 1: Checklist for Specialist studies in conformance with Appendix 6 of the EIA Regulations of 2014 (as amended).**

Requirements of Appendix 6 – GN R326 EIA Regulations of 7 April 2017	The relevant section in the report	Comment where not applicable.
		Assessment (EIA) and Environmental Management Plan (EMP) process.
(p) A summary and copies of any comments that were received during any consultation process	N/A	Not applicable. To date, no comments regarding heritage resources that require input from a specialist have been raised.
(q) Any other information requested by the competent authority.	N/A	Not applicable.
(2) Where a government notice by the Minister provides for any protocol or minimum information requirement to be applied to a specialist report, the requirements as indicated in such notice will apply.	Section 4 compliance with SAHRA guidelines	



## EXECUTIVE SUMMARY

Banzai Environmental was appointed by **Environamics Environmental Consultants** to conduct the Palaeontological Desktop Assessment (PDA) to assess the Luckhoff Solar 2 Solar Energy Facility (SEF) and associated infrastructure near Luckhoff in the Free State. In accordance with the National Environmental Management Act 107 of 1998 (NEMA) and to comply with the National Heritage Resources Act (No 25 of 1999, section 38) (NHRA), this PDA is necessary to confirm if fossil material could potentially be present in the planned development footprint and to evaluate the potential impact of the proposed development on the Palaeontological Heritage of the area.

The proposed development is underlain by Quaternary aeolian sand, calcrete and a small portion of Jurassic Dolerite of the Karoo Igneous Province. The PalaeoMap of the South African Heritage Resources Information System (SAHRIS) indicates that the Palaeontological Sensitivity of the calcretes is High, Quaternary sands has a Moderate Palaeontological Sensitivity while that of the Jurassic dolerite is Zero as it is igneous in origin (Almond and Pether, 2009; Almond *et al.*, 2013). Update geology (Council for Geosciences, Pretoria) indicates that the proposed Luckhoff 2 Solar Energy Facility is underlain by calcrete, surface limestones and Hardpan as well as alluvium, colluvium, eluvium, gravel, scree, sand, soil and debris.

The Palaeontological Significance of the proposed Solar Energy Facility is considered to be Low and will not lead to detrimental impacts on the palaeontological resources of the area. The construction of the development may therefore be authorised as the development footprint is not considered sensitive in terms of palaeontological resources. **It is consequently recommended that no further palaeontological heritage studies, ground truthing and/or specialist mitigation are required pending the discovery of newly discovered fossils.**

If significant fossil remains are discovered during any phase of construction, either on the surface or uncovered by excavations, the ECO/site manager in charge of these developments must be notified immediately. These discoveries must be secured and the ECO/site manager must alert SAHRA so that appropriate mitigation (documented and collection) can be undertaken by a professional palaeontologist (Contact details: SAHRA, 111 Harrington Street, Cape Town. PO Box 4637, Cape Town 8000, South Africa. Tel: 021 462 4502. Fax: +27 (0)21 462 4509. Web: [www.sahra.org.za](http://www.sahra.org.za)). The specialist would need a collection permit from SAHRA. Fossil material must be curated in an approved collection (museum or university) and all fieldwork and reports must meet the minimum standards for palaeontological impact studies developed by SAHRA.



**Table 2: Impact Summary.**

<b>Environmental parameter</b>	<b>Issues</b>	<b>Rating prior to mitigation</b>	<b>Average</b>	<b>Rating post mitigation</b>	<b>Average</b>
Construction Stage SEF Loss of fossil heritage	Destroy or permanently seal-in fossils at or below the surface that are then no longer available for scientific study	30	Negative Medium impact	15	Negative Low impact
SEF Operational Phase	No Impact		No Impact		No Impact
SEF Decommissioning Phase	No Impact		No Impact		No Impact

It is therefore considered that the proposed Luckhoff Solar Energy Facility and associated infrastructure will not lead to detrimental impacts on the palaeontological reserves of the area. Thus, the construction of the development may be authorised in its whole extent.



## TABLE OF CONTENT

<b>1 INTRODUCTION</b> .....	<b>1</b>
1.1 Technical Details	2
1.2 Consideration of Alternatives	6
1.2.1 No-go alternative	6
1.2.2 Location alternatives	7
1.2.3 Battery storage facility	7
1.2.4 Design and layout alternatives	7
1.2.5 Technology alternatives	7
<b>2 LEGAL MANDATE</b> .....	<b>8</b>
2.1 Legal Mandate and Purpose of the Report	8
<b>3 QUALIFICATIONS AND EXPERIENCE OF THE AUTHOR</b> .....	<b>10</b>
<b>4 LEGISLATION</b> .....	<b>10</b>
4.1 National Heritage Resources Act (25 of 1999)	10
<b>5 OBJECTIVE</b> .....	<b>12</b>
<b>6 GEOLOGICAL AND PALAEOLOGICAL HISTORY</b> .....	<b>14</b>
<b>7 GEOGRAPHICAL LOCATION OF THE SITE</b> .....	<b>22</b>
<b>8 METHODS</b> .....	<b>22</b>
8.1 Assumptions and Limitations	22
<b>9 ADDITIONAL INFORMATION CONSULTED</b> .....	<b>22</b>
<b>10 ASSESSMENT METHODOLOGY</b> .....	<b>23</b>
10.1. Method of Environmental Assessment	23
10.2. Impact Rating System	23
<b>11 FINDINGS AND RECOMMENDATIONS</b> .....	<b>30</b>
<b>12 BIBLIOGRAPHY</b> .....	<b>31</b>



## LIST OF FIGURES

<b>Figure 1: Regional locality of the proposed Luckhoff Solar 2 Solar Energy Facility near Luckhoff in the Free State Province. ....</b>	<b>4</b>
<b>Figure 2: Close-up locality of the Luckhoff Solar 2 Solar Energy Facility study area. ....</b>	<b>5</b>
<b>Figure 3: Extract of the 1:250 000 Koffiefontein 2924 Geological map (1992) (Council of Geoscience, Pretoria) indicating the geology of the Luckhoff Solar 2 Solar Energy Facility in the Free State Province. The development is underlain by Caenozoic aeolian sand (Qs), calcrete (Qc, yellow) as well as a small portion of Jurassic dolerite (Jd, red).....</b>	<b>17</b>
<b>Figure 4: Palaeontological Sensitivity according to the SAHRIS PalaeoMap (Almond et al, 2013; SAHRIS website. ....</b>	<b>19</b>
<b>Figure 5: Updated Geology (Council of Geosciences, Pretoria) indicates that the proposed Luckhoff Solar 2 Solar Energy Facility in the Free State Province is underlain by underlain by calcrete, surface limestones and Hardpan as well as alluvium, colluvium, eluvium, gravel, scree, sand, soil and debris. ....</b>	<b>21</b>
<b>Figure 6: Cumulative Impact Map: Luckhoff Solar 2 Solar Energy Facility. ...</b>	<b>29</b>



## LIST OF TABLES

<b>Table 1: Checklist for Specialist studies in conformance with Appendix 6 of the EIA Regulations of 2014 (as amended).</b> .....	<b>iv</b>
<b>Table 2: Impact Summary.</b> .....	<b>ix</b>
<b>Table 3:General site information.</b> .....	<b>1</b>
<b>Table 4: Technical details for the proposed facility.</b> .....	<b>6</b>
<b>Table 5: Listed activities (SPPs).</b> .....	<b>8</b>
<b>Table 6: Legend of the 1:250 000 Koffiefontein 2924 Geological map (1992) Geological map (Council of Geoscience, Pretoria).</b> .....	<b>18</b>
<b>Table 7: Legend of the 1:250 000 Koffiefontein 2924 Geological map (1992) Geological map (Council of Geoscience, Pretoria).</b> .....	<b>18</b>
<b>Table 8:The rating system</b> .....	<b>24</b>
<b>Table 9: Summary of Impacts</b> .....	<b>28</b>
<b>Table 10: A summary of related facilities that may have a cumulative impact, in a 30 km radius of Luckhoff Solar.</b> .....	<b>30</b>

Appendix A: Curriculum Vitae



## 1 INTRODUCTION

Luckhoff Solar 2 (Pty) Ltd plans the development of Luckhoff Solar 2 Solar Energy Facility and associated infrastructure on the Farm Mooidoorns No. 1224, Registration Division Fauresmith, situated within the Letsemeng Local Municipality (**Figure 1-2**).

**Table 3:** General site information.

Description of affected farm portion	<u>Solar Power Plant</u> Mooidoorns No. 1224
Province	Free State
District Municipality	Xhariep District Municipality
Local Municipality	Letsemeng Local Municipality
Ward numbers	
Closest towns	The town of Luckhoff is located approximately 5km south.
21 Digit Surveyor General codes	<u>Solar Power Plant</u> Farm No. 1224- F0110000000122400000
Type of technology	Photovoltaic solar facility
Structure Height	Panels ~6m, buildings ~ 6m, and battery storage facility ~8m height
Battery storage	Within a 5-hectare area
Surface area to be covered (Development footprint)	Approximately 480 ha
Laydown area dimensions (EIA footprint)	Assessed 480 ha
Structure orientation	The panels will either be fixed to a single-axis horizontal tracking structure where the orientation of the panel varies according to the time of the day, as the sun moves from east to west or tilted at a fixed angle equivalent to the latitude at which the site is in order to capture the most sun.
Generation capacity	Up to 240MW
Expected production	N/A - this will be dependent on the chosen technology.



## 1.1 Technical Details

The term photovoltaic describes a solid-state electronic cell that produces direct current electrical energy from the radiant energy of the sun through a process known as the Photovoltaic Effect. This refers to light energy placing electrons into a higher state of energy to create electricity. Each PV cell is made of silicon (i.e., semiconductors), which is positively and negatively charged on either side, with electrical conductors attached to both sides to form a circuit. This circuit captures the released electrons in the form of an electric current (direct current). The key components of the proposed project are described below:

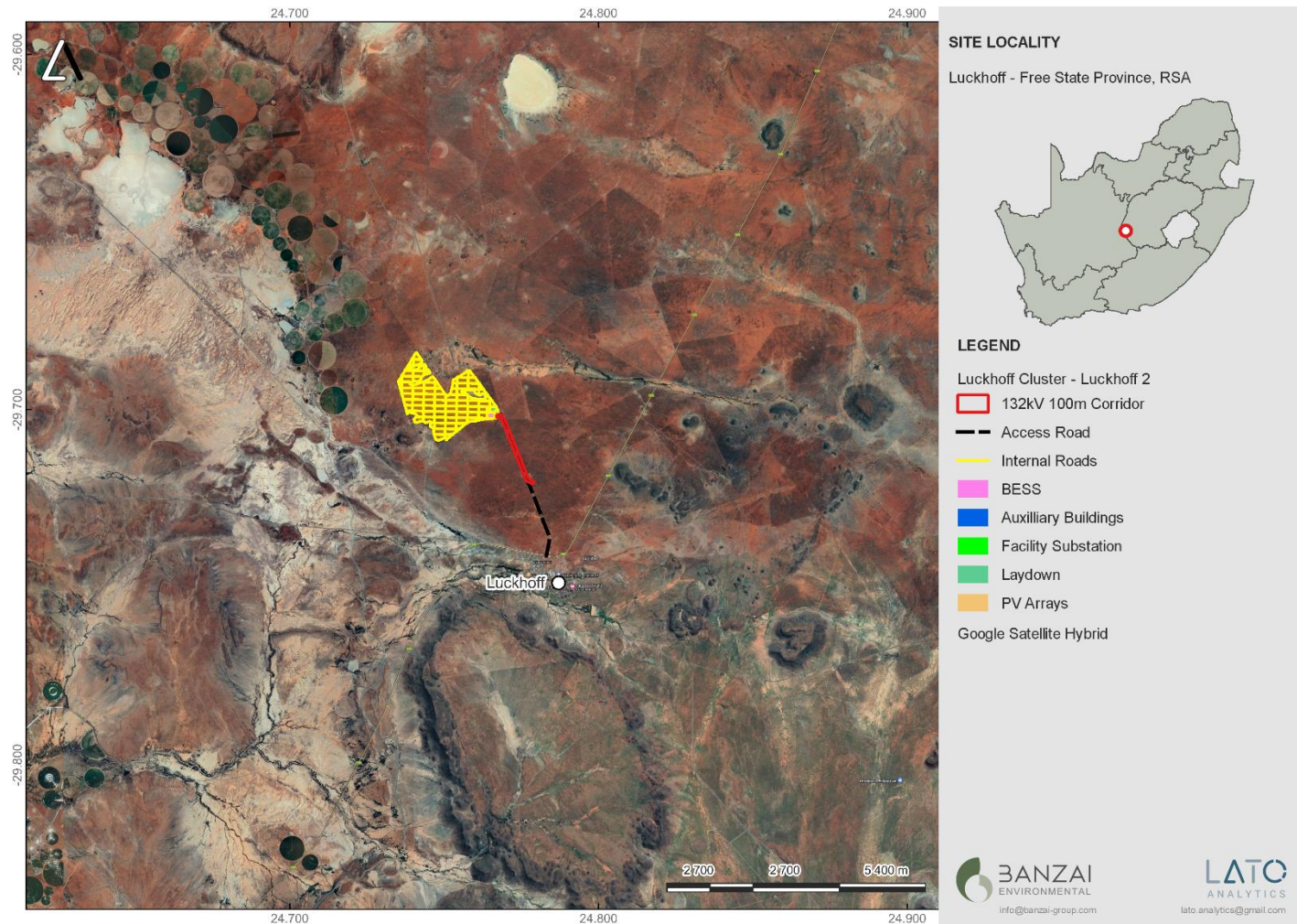
- PV Panel Array - To produce up to 240MW, the proposed facility will require numerous linked cells placed behind a protective glass sheet to form a panel. Multiple panels will be required to form the solar PV arrays which will comprise the PV facility. The PV panels will be tilted at a northern angle in order to capture the most sun or using one-axis tracker structures to follow the sun to increase the Yield
- Wiring to Inverters - Sections of the PV array will be wired to inverters. The inverter is a pulse width mode inverter that converts direct current (DC) electricity to alternating current (AC) electricity at grid frequency.

Connection to the grid - Connecting the array to the electrical grid requires transformation of the voltage from 480V to 33kV to 132kV. The normal components and dimensions of a distribution rated electrical substation will be required. Output voltage from the inverter is 480V and this is fed into step up transformers to 132kV. An onsite substation will be required to step the voltage up to 132kV, after which the power will be evacuated into the national grid. Whilst Luckhoff 1 Solar Power Plant has not yet received a cost estimate letter from Eskom, it is expected that generation from the facility will tie in with the proposed Luckhoff Grid Connection 132kV Overhead Power Line. The Project will inject up to 240MW into the National Grid. The installed capacity will be approximately 240MW.

In order to evacuate the energy generated by the facilities to the national grid, Luckhoff Solar 2 (Pty) Ltd is proposing to develop the activity entails the development of grid connection infrastructure which consists of the following Electrical Grid Infrastructure (EGI) 132kV single/double-circuit overhead power line (with the associated infrastructure) to enable the connection and evacuation of the generated electricity of the proposed Luckhoff Solar 1, 2, and 3 Photovoltaic Solar Energy Facilities, to the national grid network:



- A collector switching station (up to 132kV);
- A ~2.5 km 132 kV single/double circuit overhead powerline linking the collector switching station to the proposed Luckhoff Main Transmission Substation (MTS) (see below);
- A new 132 kV / 400 kV MTS; and
- Three 400kV Loop-in-Loop Out power lines from the existing Eskom powerlines (Hydra/Perseus 2, Hydra/Perseus 3 and Beta/Hydra 1) to the MTS.
- Electrical reticulation network – An internal electrical reticulation network will be required and will be laid ~2-4m underground as far as practically possible.
- Supporting Infrastructure – The following auxiliary buildings with basic services including water and electricity will be required on site:
  - A 33 kV switch room,
  - A gate house, ablutions, workshops, storage and warehousing areas, site offices and a control centre.
- Battery storage – A Battery Storage Facility with a maximum height of 8m and a maximum volume of 1,740 m<sup>3</sup> of batteries and associated operational, safety and control infrastructure.
- Roads - Access will be obtained via the S572 secondary road, off the R48 regional road, an existing gravel road located adjacent to the site. An internal site road network will also be required to provide access to the solar field and associated infrastructure.
- Fencing - For health, safety and security reasons, the facility will be required to be fenced off from the surrounding farm. Fencing with a height of 3.5 meters will be used.



**Figure 1:** Regional locality of the proposed Luckhoff Solar 2 Solar Energy Facility near Luckhoff in the Free State Province.



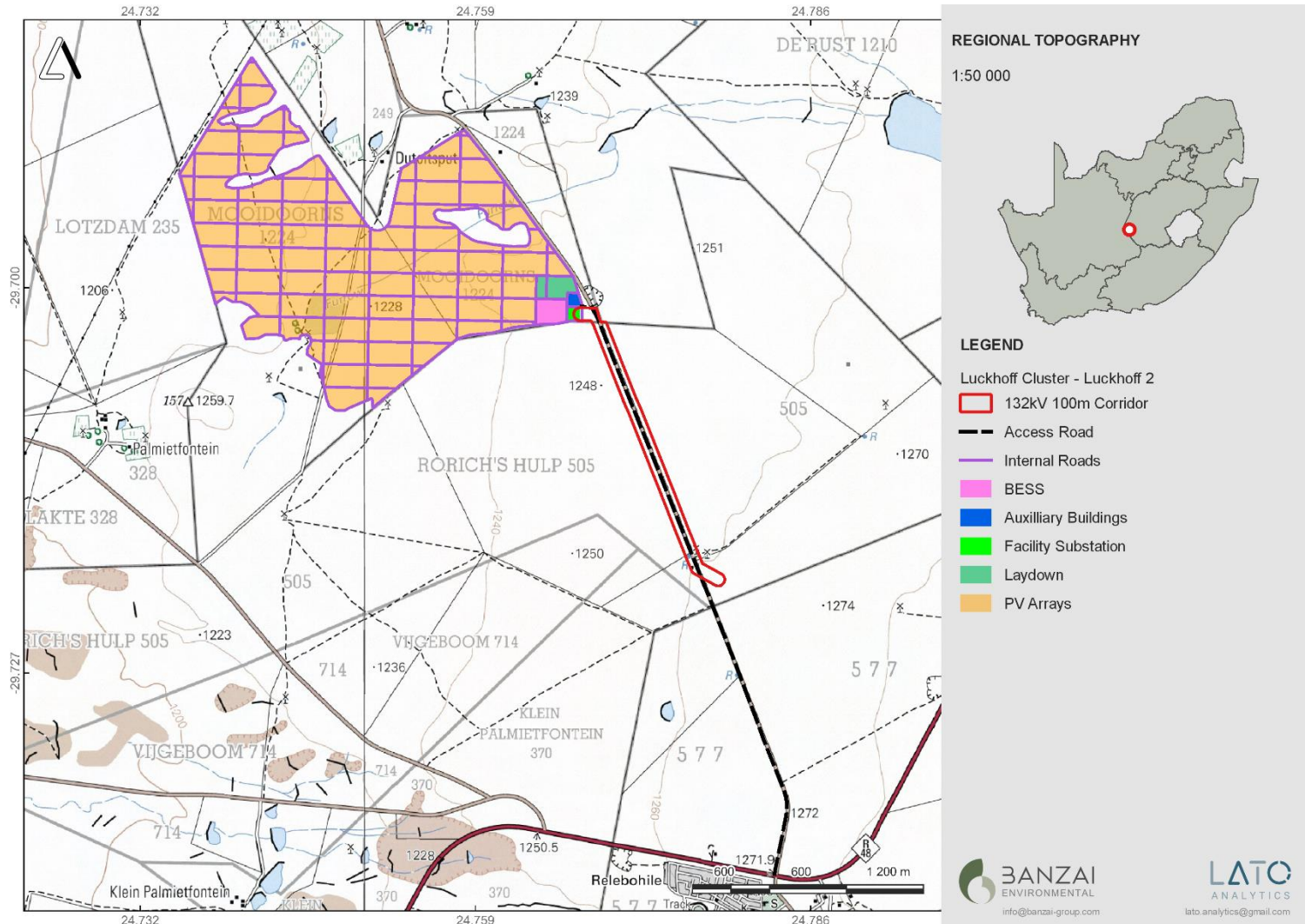


Figure 2: Close-up locality of the Luckhoff Solar 2 Solar Energy Facility study area.

**Table 4: Technical details for the proposed facility.**

<b>Component</b>	<b>Description / dimensions</b>
<b>Height of PV panels</b>	6 meters
<b>Area of PV Array</b>	480 Hectares (Development footprint)
<b>Area occupied by inverter / transformer stations / substations / BESS</b>	BESS: up to ± 5 ha Facility substation: up to 1 ha
<b>Capacity of on-site substation</b>	132kV
<b>Capacity of the power line</b>	132kV
<b>Area occupied by both permanent and construction laydown areas</b>	Permanent Laydown Area: 480 Hectares Construction Laydown Area: ~20 Hectares
<b>Area occupied by buildings</b>	A 33 kV switch room, a gate house, ablutions, workshops, storage and warehousing areas, site offices and a control centre: ~ 1Hectares
<b>Battery storage facility</b>	Maximum height: 8m Maximum volume: 1740 m <sup>3</sup>
<b>Length of internal roads</b>	Approximately 33 km

## 1.2 Consideration of Alternatives

The DEAT 2006 guidelines on ‘assessment of alternatives and impacts’ proposes the consideration of four types of alternatives namely, the no-go, location, activity, and design alternatives. It is however, important to note that the regulation and guidelines specifically state that only ‘feasible’ and ‘reasonable’ alternatives should be explored. It also recognizes that the consideration of alternatives is an iterative process of feedback between the developer and EAP, which in some instances culminates in a single preferred project proposal. An initial site assessment was conducted by the developer the affected properties and the farm portions were found favorable due to its proximity to grid connections, solar radiation, ecology and relative flat terrain. These factors were then taken into consideration and avoided as far as possible.

The following alternatives were considered in relation to the proposed activity and all specialists should also make mention of these:

### 1.2.1 No-go alternative

This alternative considers the option of ‘do nothing’ and maintaining the status quo. The site is currently zoned for agricultural uses. Should the proposed activity not proceed, the site will remain unchanged and will continue to be used for agricultural purposes. The potential opportunity costs in terms of alternative land use income through rental for energy facility and the supporting social and economic development in the area would be lost if the status quo persist.



### **1.2.2 Location alternatives**

No other possible sites were identified on Farm No. 1224. This site is referred to as the preferred site. Some limited sensitive features occur on the site. The size of the site makes provision for the exclusion of any sensitive environmental features that may arise

### **1.2.3 Battery storage facility**

It is proposed that a nominal up to 240 MW Battery Storage Facility for grid storage would be housed in stacked containers, or multi-storey building, with a maximum height of 8m and a maximum volume of 1,740m<sup>3</sup> of batteries and associated operational, safety and control infrastructure. Three types of battery technologies are being considered for the proposed project: Lithium-ion, Sodium-sulphur or Vanadium Redox flow battery. The preferred battery technology is Lithium-ion.

Battery storage offers a wide range of advantages to South Africa including renewable energy time shift, renewable capacity firming, electricity supply reliability and quality improvement, voltage regulation, electricity reserve capacity improvement, transmission congestion relief, load following and time of use energy cost management. In essence, this technology allows renewable energy to enter the base load and peak power generation market and therefore can compete directly with fossil fuel sources of power generation and offer a truly sustainable electricity supply option.

### **1.2.4 Design and layout alternatives**

Design alternatives will be considered throughout the planning and design phase and specialist studies are expected to inform the final layout of the proposed development.

### **1.2.5 Technology alternatives**

There are several types of semiconductor technologies currently available and in use for PV solar panels. Two, however, have become the most widely adopted, namely crystalline silicon (Mono-facial and Bi-facial) and thin film. The technology that (at this stage) proves more feasible and reasonable with respect to the proposed solar facility is crystalline silicon panels, due to it being non-reflective, more efficient, and with a higher durability. However, due to the rapid technological advances being made in the field of solar technology the exact type of technology to be used, such as bifacial panels, will only be confirmed at the onset of the project.



## 2 LEGAL MANDATE

### 2.1 Legal Mandate and Purpose of the Report

The National Environmental Management Act identifies listed activities (in terms of Section 24) which are likely to have an impact on the environment. These activities cannot commence without obtaining an EA from the relevant competent authority. Sufficient information is required by the competent authority to make an informed decision and the project is therefore subject to an environmental assessment process which can be either a Basic Assessment Process or a full Scoping and Environmental Impact Assessment process.

The EIA Regulations No. 324, 325, and 327 outline the activities that may be triggered and therefore require EA. The following listed activities with special reference to the proposed development is triggered:

**Table 5: Listed activities (SPPs).**

<b>Relevant notice:</b>	<b>Activity No (s)</b>	<b>Description of each listed activity as per project description:</b>
GNR. 327 (as amended in 2017)	Activity 11(i)	<ul style="list-style-type: none"> <li>• <i>“The development of facilities or infrastructure for the transmission and distribution of electricity (i) outside urban areas or industrial complexes with a capacity of more than 33 but less than 275 kilovolts.”</i></li> <li>• Activity 11(i) is triggered as the proposed photovoltaic solar facility will transmit and distribute electricity of 132 kilovolts outside an urban area.</li> </ul>
GNR. 327 (as amended in 2017)	Activity 28(ii)	<ul style="list-style-type: none"> <li>• <i>“Residential, mixed, retail, commercial, industrial or institutional developments where such land was used for agriculture or afforestation on or after 1998 and where such development (ii) will occur outside an urban area, where the total land to be developed is bigger than 1 hectare.”</i></li> <li>• Activity 28(ii) is triggered as portions of the affected farm has been previously used for grazing and the property will be re-zoned to “special” use.</li> </ul>
GNR. 327 (as amended in 2017)	Activity 24(ii)	<ul style="list-style-type: none"> <li>• <i>“The development of a road (ii) with reserve wider than 13,5 meters, or where no reserve exists where the road is wider than 8 meters;</i></li> <li>• Activity 24(ii) is triggered as the internal roads will vary between 6 and 12 meters in width.</li> </ul>



GNR. 327 (as amended in 2017)	Activity 56 (ii):	<ul style="list-style-type: none"><li>• <i>"The widening of a road by more than 6 metres, or the lengthening of a road by more than 1 kilometre (ii) where no reserve exists, where the existing road is wider than 8 metres..."</i></li><li>• Activity 56 (ii) is triggered as the existing access to the affected property does not have a reserve and will need to be widened by more than 6 metres.</li></ul>
GNR. 325 (as amended in 2017)	Activity 1	<ul style="list-style-type: none"><li>• <i>"The development of facilities or infrastructure for the generation of electricity from a renewable resource where the electricity output is 20 megawatts or more."</i></li><li>• Activity 1 is triggered since the proposed photovoltaic solar facility will generate up to 240 megawatts electricity through the use of a renewable resource.</li></ul>
GNR. 325 (as amended in 2017)	Activity 15	<ul style="list-style-type: none"><li>• <i>"The clearance of an area of 20 hectares or more of indigenous vegetation."</i></li><li>• More than 20 hectares of indigenous vegetation will be cleared.</li></ul>
GNR. 324 (as amended in 2017)	Activity 4 (b)(i)(ee)	<ul style="list-style-type: none"><li>• <i>The development of a road wider than 4 metres with a reserve less than 13,5 metres, (b) Free State, (i) outside urban area, (ee) within Critical biodiversity areas as identified in systematic biodiversity plans adopted by the competent authority.</i></li><li>• Activity 4(b)(i)(ee) is triggered as the internal roads will vary between 6 and 12 meters in width.</li></ul>
GNR. 324 (as amended in 2017)	Activity 10 (b)(i)(ee)	<ul style="list-style-type: none"><li>• <i>The development and related operation of facilities or infrastructure for the storage, or storage and handling of a dangerous good, where such storage occurs in containers with a combined capacity of 30 but not exceeding 80 cubic metres (b) Free State, (i) outside urban area, (ee) within Critical biodiversity areas as identified in systematic biodiversity plans adopted by the competent authority.</i></li><li>• Activity 10 (b)(i)(ee) will be triggered since more than 30 cubic metres of fuel will be stored on site.</li></ul>
GNR. 324 (as amended in 2017)	Activity 12 (b)(i)	<ul style="list-style-type: none"><li>• <i>The clearance of an area of 300 square metres or more of indigenous vegetation except where such clearance of indigenous vegetation in (b) Free State (i) within Critical biodiversity areas as identified in systematic biodiversity plans adopted by the competent authority.</i></li></ul>



		<ul style="list-style-type: none"> <li>Activity 12 (b)(i) is triggered since approximately 480 hectares of indigenous vegetation will be cleared.</li> </ul>
GNR. 324 (as amended in 2017)	Activity 18 (b)(i)(ee)	<ul style="list-style-type: none"> <li><i>The widening of a road by more than 4 metres, or the lengthening of a road by more than 1 kilometre in (b) Free Stat, (i) outside urban areas, within (ee) Critical biodiversity areas as identified in systematic biodiversity plans adopted by the competent authority</i></li> <li>Activity 18 (b)(i)(ee) is triggered as the existing access to the affected property does not have a reserve and will need to be widened by more than 6 metres.</li> </ul>

The activities triggered under Listing Notice 1, 2 and 3 (Regulation 327, 325 and 324) for the project implies that the development is considered as potentially having an impact on the environment and therefore require the implementation of appropriate mitigation measures.

### 3 QUALIFICATIONS AND EXPERIENCE OF THE AUTHOR

This study has been conducted by Mrs Elize Butler. She has conducted approximately 400 palaeontological impact assessments for developments in the Free State, KwaZulu-Natal, Eastern, Central, and Northern Cape, Northwest, Gauteng, Limpopo, and Mpumalanga. She has an MSc (*cum laude*) in Zoology (specializing in Palaeontology) from the University of the Free State, South Africa and has been working in Palaeontology for thirty years. She has experience in locating, collecting, and curating fossils. She has been a member of the Palaeontological Society of South Africa (PSSA) since 2006 and has been conducting PIAs since 2014.

### 4 LEGISLATION

#### 4.1 National Heritage Resources Act (25 of 1999)

Cultural Heritage in South Africa, includes all heritage resources, is protected by the National Heritage Resources Act (Act 25 of 1999) (NHRA). Heritage resources as defined in Section 3 of the Act include **“all objects recovered from the soil or waters of South Africa, including archaeological and palaeontological objects and material, meteorites and rare geological specimens”**.

The identification, evaluation and assessment of any cultural heritage site, artefact or finds in the South African context is required and governed by the following legislation:



- National Environmental Management Act (NEMA) Act 107 of 1998
- National Heritage Resources Act (NHRA) Act 25 of 1999
- Minerals and Petroleum Resources Development Act (MPRDA) Act 28 of 2002
- Notice 648 of the Government Gazette 45421- general requirements for undertaking an initial site sensitivity verification where no specific assessment protocol has been identified.

The next section in each Act is directly applicable to the identification, assessment, and evaluation of cultural heritage resources.

GNR 982 (Government Gazette 38282, 14 December 2014) promulgated under the National Environmental Management Act (NEMA) Act 107 of 1998

- Basic Assessment Report (BAR) – Regulations 19 and 23
- Environmental Impacts Assessment (EIA) – Regulation 23
- Environmental Scoping Report (ESR) – Regulation 21
- Environmental Management Programme (EMPr) – Regulations 19 and 23

National Heritage Resources Act (NHRA) Act 25 of 1999

- Protection of Heritage Resources – Sections 34 to 36
- Heritage Resources Management – Section 38

MPRDA Regulations of 2014

Environmental reports to be compiled for application of mining right – Regulation 48

- Contents of scoping report – Regulation 49
- Contents of environmental impact assessment report – Regulation 50
- Environmental management programme – Regulation 51
- Environmental management plan – Regulation 52

The NEMA (No 107 of 1998) states that an integrated EMP should (23:2 (b)) "*...identify, predict and evaluate the actual and potential impact on the environment, socio-economic conditions and cultural heritage*".

In agreement with legislative requirements, EIA rating standards as well as SAHRA policies the following comprehensive and legally compatible PIA report have been compiled.

Palaeontological heritage is exceptional and non-renewable and is protected by the NHRA. Palaeontological resources and may not be unearthed, broken moved, or destroyed by any development



without prior assessment and without a permit from the relevant heritage resources authority as per section 35 of the NHRA.

**This Palaeontological Impact assessment forms part of the Heritage Impact Assessment (HIA) and adhere to the conditions of the Act.** According to **Section 38 (1)**, an HIA is required to assess any potential impacts to palaeontological heritage within the development footprint where:

- the construction of a road, wall, power line, pipeline, canal or other similar form of linear development or barrier exceeding 300 m in length.
- the construction of a bridge or similar structure exceeding 50 m in length.
- any development or other activity which will change the character of a site—  
(Exceeding 5 000 m<sup>2</sup> in extent; or
- involving three or more existing erven or subdivisions thereof; or
- involving three or more erven or divisions thereof which have been consolidated within the past five years; or
- the costs of which will exceed a sum set in terms of regulations by SAHRA or a provincial heritage resources authority
- the re-zoning of a site exceeding 10 000 m<sup>2</sup> in extent.
- or any other category of development provided for in regulations by SAHRA or a Provincial heritage resources authority.

## 5 OBJECTIVE

The aim of a Palaeontological Impact Assessment (PIA) is to decrease the effect of the development on potential fossils at the development site.

According to the “SAHRA APM Guidelines: Minimum Standards for the Archaeological and Palaeontological Components of Impact Assessment Reports” the purpose of the PIA is: 1) to identify the palaeontological importance of the rock formations in the footprint; 2) to evaluate the palaeontological magnitude of the formations; 3) to clarify the **impact** on fossil heritage; and 4) to suggest how the developer might protect and lessen possible damage to fossil heritage.

The palaeontological status of each rock section is calculated as well as the possible impact of the development on fossil heritage by a) the palaeontological importance of the rocks, b) the type of development and c) the quantity of bedrock removed.





When the development footprint has a moderate to high palaeontological sensitivity a field-based assessment is necessary. The desktop and the field survey of the exposed rock determine the impact significance of the planned development and recommendations for further studies or mitigation are made. Destructive impacts on palaeontological heritage usually only occur during the construction phase while the excavations will change the current topography and destruct or permanently seal-in fossils at or below the ground surface. Fossil Heritage will then no longer be accessible for scientific research.

Mitigation usually precede construction or may occur during construction when potentially fossiliferous bedrock is exposed. Mitigation comprises the collection and recording of fossils. Preceding excavation of any fossils a permit from SAHRA must be obtained and the material will have to be housed in a permitted institution. When mitigation is applied correctly, a positive impact as possible because our knowledge of local palaeontological heritage may be increased.

The terms of reference of a PIA are as follows:

**General Requirements:**

- Adherence to the content requirements for specialist reports in accordance with Appendix 6 of the EIA Regulations 2014, as amended.
- Adherence to all applicable best practice recommendations, appropriate legislation, and authority requirements.
- Submit a comprehensive overview of all appropriate legislation, guidelines.
- Description of the proposed project and provide information regarding the developer and consultant who commissioned the study.
- Description and location of the proposed development and provide geological and topographical maps.
- Provide Palaeontological and geological history of the affected area.
- Identification sensitive areas to be avoided (providing shapefiles/kml's) in the proposed development.
- Evaluation of the significance of the planned development during the Pre-construction, Construction, Operation, Decommissioning Phases and Cumulative impacts. Potential impacts should be rated in terms of the direct, indirect, and cumulative:
  - a. **Direct impacts** are impacts that are caused directly by the activity and generally occur at the same time and at the place of the activity.
  - b. **Indirect impacts** of an activity are indirect or induced changes that may occur as a result of the activity.



c. **Cumulative impacts** result from the incremental impact of the proposed activity on a common resource when added to the impacts of other past, present or reasonably foreseeable future activities.

- Fair assessment of alternatives (infrastructure alternatives have been provided);
- Recommend mitigation measures to minimise the impact of the proposed development; and
- Implications of specialist findings for the proposed development (such as permits, licenses etc).

## 6 GEOLOGICAL AND PALAEOONTOLOGICAL HISTORY

The proposed Luckhoff Solar 2 Solar Energy Facility near Luckhoff in the Free State Province is depicted on the 1:250 000 Koffiefontein 2924 Geological map (1992) (Council of Geoscience, Pretoria) (**Figure 3; Table 6**) with a short sheet explanation by Zawada. The proposed development is underlain by Quaternary aeolian sand (Qs; yellow), calcrete (Qc; dark yellow) with a small portion of the Jurassic Dolerite of the Karoo Igneous Province (Jd, red). The PalaeoMap of the South African Heritage Resources Information System (SAHRIS) indicates that the Palaeontological Sensitivity of the calcretes is High, Quaternary sands has a Moderate Palaeontological Sensitivity while that of the Jurassic dolerite of the Karoo Igneous Province is Zero as it is igneous in origin (**Figure 4, Table 7**; Almond and Pether, 2009; Almond *et al.*, 2013). Update geology (Council for Geosciences, Pretoria) indicates that the proposed development is underlain by calcrete, surface limestones and Hardpan as well as alluvium, colluvium, eluvium, gravel, scree, sand, soil and debris (**Figure 5**).

Pleistocene mammal faunas are described from Cornelia, Florisbad, and Erfkroon (Free State Province) as well as elsewhere in the country (Wells & Cooke 1942, Cooke 1974, Skead 1980, Klein 1984, Brink, J.S. 1987, Bousman *et al.* 1988, Bender & Brink 1992, Brink *et al.* 1995, MacRae 1999, Meadows & Watkeys 1999, Churchill *et al.* 2000 Partridge & Scott 2000). Reworked Stone Age artifacts (Plio-Pleistocene) have been found in Quaternary alluvium. Fossils represent terrestrial plants and animals with a close resemblance to living forms. Fossil assemblages include bivalves, diatoms, gastropod shells, ostracods as well as bones, horn cores and mammalian teeth (Klein, 1984). Tortoise remains have also been uncovered as well as trace fossils which includes termite and insect's burrows and mammalian trackways. Amphibian and crocodile skeletons have been uncovered where the depositional settings in the past were wetter. The palaeontology of the Quaternary superficial deposits has been relatively neglected in the past.

The Quaternary superficial deposits are the youngest geological deposits formed during the most recent period of geological time (approximately 2.6 million years ago to present). Most of the superficial



deposits are unconsolidated sediments and consist of gravel, sand, silt, and clay, and they form relatively thin, often discontinuous patches of sediments or larger spreads.

The Quaternary deposits are of important due to the palaeoclimatic changes that are reflected in the different geological formations (Hunter et al., 2006). During the climate fluctuations in the Cenozoic Era most geomorphologic features in southern Africa where formed (Maud, 2012). Barnosky (2005) indicated that various warming and cooling events occurred in the Cenozoic but states that climatic changes during the Quaternary Period, specifically the last 1.8 Ma, were the most drastic climate changes relative to all climate variations in the past. Climate variations that occurred in the Quaternary Period were both drier and wetter than the present and resulted in changes in river flow patterns, sedimentation processes and vegetation variation (Tooth et al., 2004).

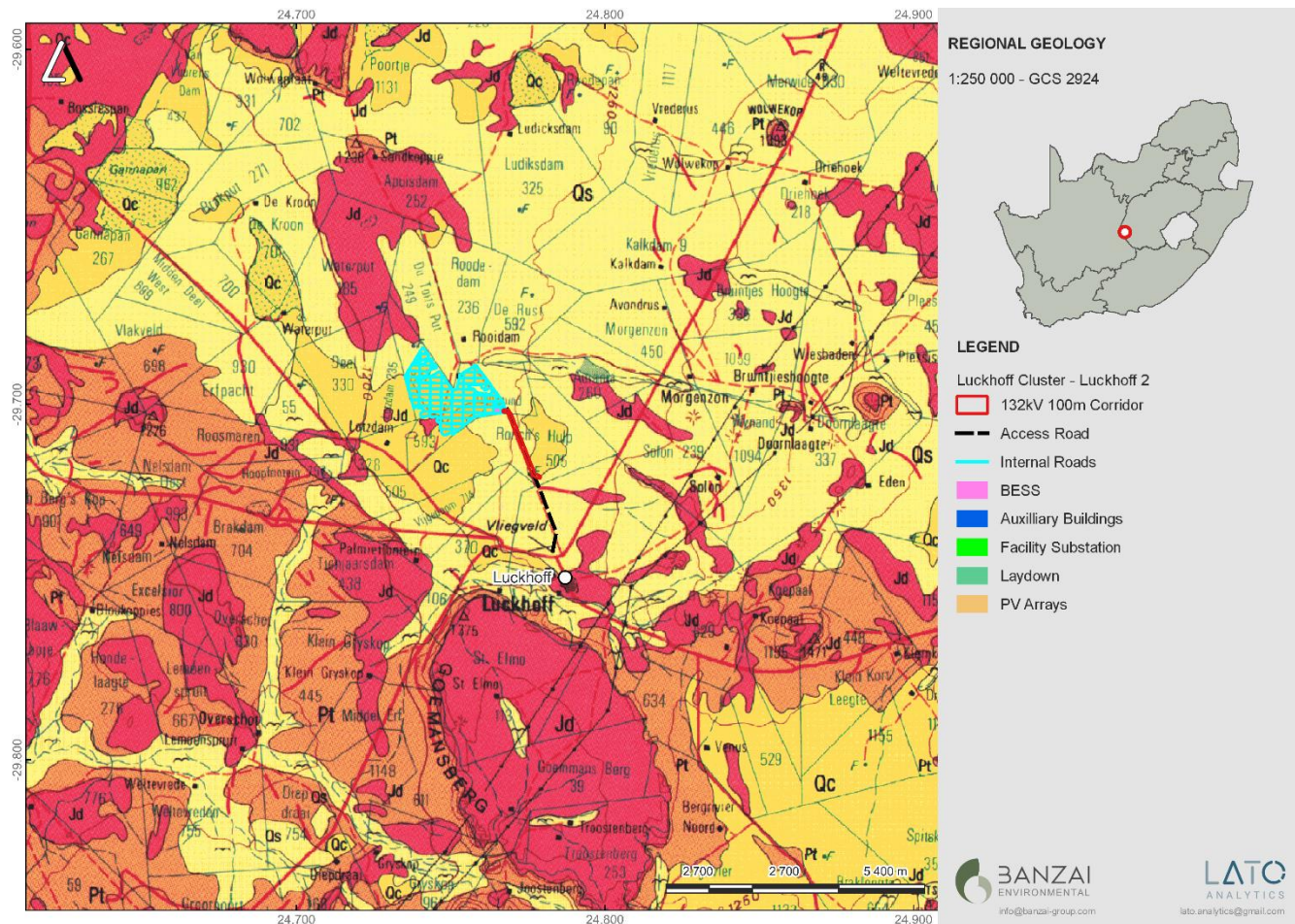
The pedogenic limestone deposits is up to 10 meters thick and may displace or replace near-surface bedrocks. Netterberg (1978, 1980) revived the South African calcretes and found that the calcretes comprise of glaebular calcrete (with separate nodules), hardpan calcrete that contain solid limestone and honeycomb calcrete (fusing with glaebules). These calcretes are locally conglomeratic with clasts of exotic pebbles and reworked calcretes. Some of these calcretes may be diamondiferous. The surface sediments most probably overlie the Tierberg Formation (Ecca Group, Karoo Supergroup) at depth.

The **Karoo igneous province** (Jd-red) is one of the world's classic continental basalt (CFB) provinces. This province consists of intrusive and extrusive rocks that occur over a large area (Duncan et al, 2006). Generally, the flood basalts do not contribute to prominent volcanic structures, but instead are formed by successive eruptions from a set of fissures that form sub-horizontal lava flows (sills and dykes) varying in thickness. This lava caps the landscape on which they erupted. As the Karoo is an old flood basalt province it is today preserved as erosional fragments of a more extensive lava cap that covered much of southern Africa in the geological past. It is estimated that the Karoo lava outcrop currently covered at least 140 000 km<sup>2</sup> while it was larger in the past [ $\sim 2\,000\,000\text{ km}^2$  (Cox 1970, 1972)].

The Karoo Igneous Province contains a large volume of flood basalts as well as silicic volcanic rocks. These units are comprised of rhyodacite and rhyolitic magma and crops out along the Lebombo monocline. Individual units span up to 60 km and sometimes show massive pyroclastic structures and are thus classified as rheoignimbrites. The basal lavas lie conformable on the Clarens Formation but in specific localities sandstone erosion occurred before the volcanic eruptions took place. Lock *et al* (1974) found evidence in the Eastern Cape that in the early stages of volcanism magma interacted with ground water to produce volcanoclastic deposits as well as phreatic and phreatomagmatic diatremes. Eales *et al* (1984) also found evidence of aqueous environments during early volcanism by the existence of pillow



lavas and associated hyaloclastite breccias and thin lenses of fluvial sandstones interbedded with the lowermost magmas.

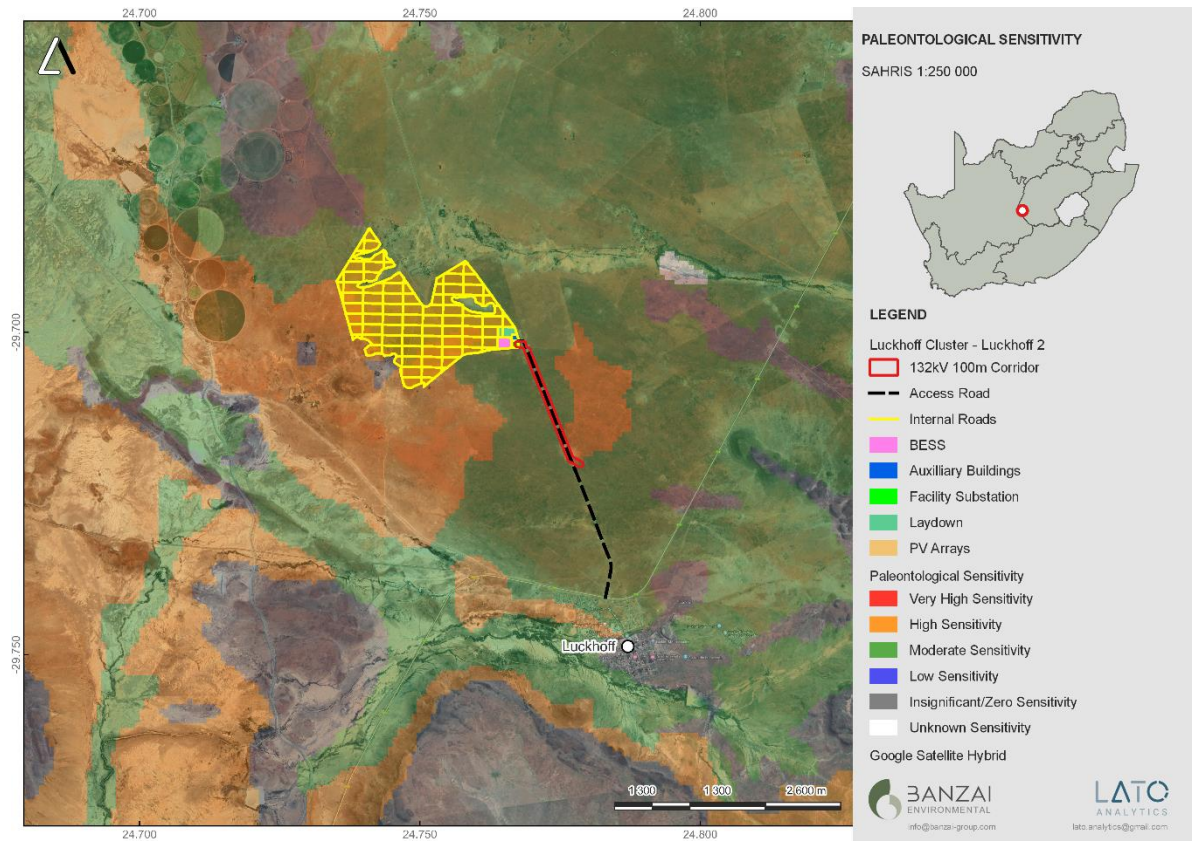


**Figure 3:** Extract of the 1:250 000 Koffiefontein 2924 Geological map (1992) (Council of Geoscience, Pretoria) indicating the geology of the Luckhoff Solar 2 Solar Energy Facility in the Free State Province. The development is underlain by Caenozoic aeolian sand (Qs), calcrete (Qc, yellow) as well as a small portion of Jurassic dolerite (Jd,



**Table 6:** Legend of the 1:250 000 Koffiefontein 2924 Geological map (1992) Geological map (Council of Geoscience, Pretoria).

GEOLOGIESE LEGENDE				GEOLOGICAL LEGEND		
SEDIMENTÊRE EN VULKANIESE GESTEENTES SEDIMENTARY AND VOLCANIC ROCKS				INTRUSIEWE GESTEENTES INTRUSIVE ROCKS		
	GROEP GROUP	SUBGROEP SUBGROUP	FORMASIE FORMATION			
KWATERNER QUATERNARY			~ ~ ~	~	Alluvium Alluvium	
			Qs	Qs	Eoliese sand Aeolian sand	
			Qc	Qc	Kalkreet Calcrete	
JURA JURASSIC			Jd	Jd	Doleriet Dolerite	
PERM PERMIAN	KAROO OPEENVOLGING/ SEQUENCE	BEAUFORT	Adelaide	Pa	Pa	Blougrys en persk Blue-grey and purple mudstone interbedded with yellow sandstone and siltstone
			Tierberg	Pt	Pt	Blougrys tot donkergrys skalie met karbonaatkonkresies; ondergeskikte sandsteen en slijksteen in boonste gedeelte Blue-grey to dark-grey shale with carbonate concretions; subordinate sandstone and siltstone in upper part
		ECCA	Whitehill en/and Prins Albert/Prince Albert	Ppw	Ppw	Donkergrys tot swart skalie met ondergeskikte slijksteen; ysterryke karbonaatkonkresies in basale gedeelte Dark-grey to black shale with subordinate siltstone; iron-rich carbonate concretions in basal part
			Dwyka	C-Pd	C-Pd	Diamiktiet en rolblokskalie, ondergeskikte sandsteen en warfskalie met kalksteenlense Diamictite and boulder shale, subordinate sandstone and varved shale with limestone lenses
		KARBOON CARBONIFEROUS				



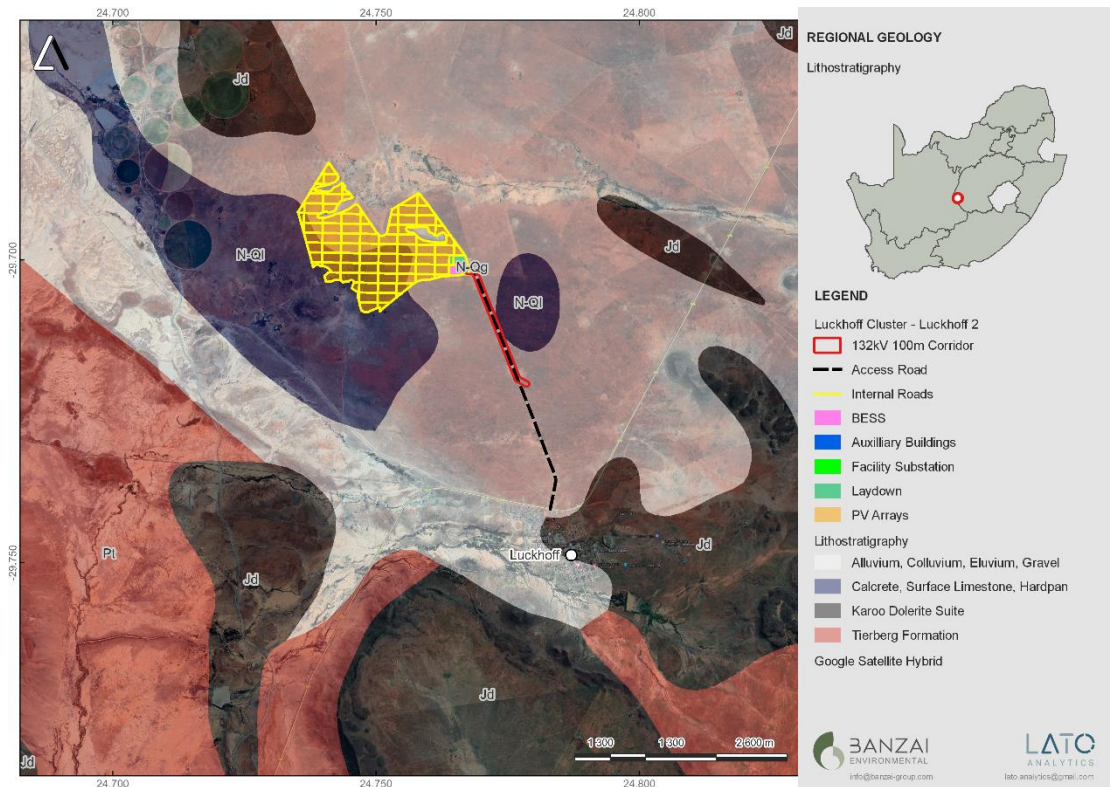
**Figure 4:** Palaeontological Sensitivity according to the SAHRIS PalaeoMap (Almond et al, 2013; SAHRIS website).



**Table 7: Palaeontological Sensitivity according to the SAHRIS PalaeoMap (Almond et al, 2013; SAHRIS website).**

Colour	Sensitivity	Required Action
RED	VERY HIGH	Field assessment and protocol for finds is required
<b>ORANGE/YELLOW</b>	<b>HIGH</b>	<b>Desktop study is required and based on the outcome of the desktop study; a field assessment is likely</b>
<b>GREEN</b>	<b>MODERATE</b>	<b>Desktop study is required</b>
BLUE	LOW	No palaeontological studies are required however a protocol for finds is required
GREY	INSIGNIFICANT/ZERO	No palaeontological studies are required
WHITE/CLEAR	UNKNOWN	These areas will require a minimum of a desktop study. As more information comes to light, SAHRA will continue to populate the map.





**Figure 5:** Updated Geology (Council of Geosciences, Pretoria) indicates that the proposed Luckhoff Solar 2 Solar Energy Facility in the Free State Province is underlain by underlain by calcrete, surface limestones and Hardpan as well as alluvium, colluvium, eluvium, gravel, scree, sand, soil and debris.



## 7 GEOGRAPHICAL LOCATION OF THE SITE

The proposed development is located about 5km north-west of the Luckhoff in the Free State Province.

## 8 METHODS

The aim of a desktop study is to evaluate the possible risk to palaeontological heritage in the proposed development. This includes all trace fossils as well as all fossils in the proposed footprint. All possible information is consulted to compile a desktop study, and this includes the following: all Palaeontological Impact Assessment reports in the same area; aerial photos and Google Earth images, topographical as well as geological maps.

### 8.1 Assumptions and Limitations

The focal point of geological maps is the geology of the area and the sheet explanations of the Geological Maps were not meant to focus on palaeontological heritage. Many inaccessible regions of South Africa have never been reviewed by palaeontologists and data is generally based on aerial photographs alone. Locality and geological information of museums and universities databases have not been kept up to date or data collected in the past have not always been accurately documented.

Areas with similar Assemblage Zones in other areas is also used to provide information on the existence of fossils in an area which has not documented in the past. When using similar Assemblage Zones and geological formations for Desktop studies it is generally **assumed** that exposed fossil heritage is present within the footprint. A field-assessment will thus improve the accuracy of the desktop assessment and thus this study has been commissioned.

## 9 ADDITIONAL INFORMATION CONSULTED

In compiling this report the following sources were consulted:

- Geological map 1:100 000, Geology of the Republic of South Africa (Visser 1984)
- A Google Earth map with polygons of the proposed development was obtained from Environamics Environmental Consulting.
- 1:250 000 Koffiefontein 2924 Geological map (1992) (Council of Geoscience, Pretoria)
- Updated Geology (Council of Geosciences, Pretoria).
- PIAs in the Luckhoff district include that of Almond 2016 (see references)



## 10 ASSESSMENT METHODOLOGY

### 10.1. Method of Environmental Assessment

The environmental assessment aims to identify the various possible environmental impacts that could result from the proposed activity. Different impacts need to be evaluated in terms of their significance and in doing so highlight the most critical issues to be addressed.

Significance is determined through a synthesis of impact characteristics which include context and intensity of an impact. Context refers to the geographical scale i.e., site, local, national, or global whereas intensity is defined by the severity of the impact e.g., the magnitude of deviation from background conditions, the size of the area affected, the duration of the impact and the overall probability of occurrence. Significance is calculated as shown in Table 4.1.

Significance is an indication of the importance of the impact in terms of both physical extent and time scale, and therefore indicates the level of mitigation required. The total number of points scored for each impact indicates the level of significance of the impact.

### 10.2. Impact Rating System

Impact assessment must take account of the nature, scale, and duration of impacts on the environment whether such impacts are positive or negative. Each impact is also assessed according to the project phases:

- planning
- construction
- operation
- decommissioning

Where necessary, the proposal for mitigation or optimisation of an impact should be detailed. A brief discussion of the impact and the rationale behind the assessment of its significance should also be included. The rating system is applied to the potential impacts on the receiving environment and includes an objective evaluation of the mitigation of the impact. In assessing the significance of each impact, the following criteria is used:



<b>Table 8: The rating system</b>		
<b>NATURE</b>		
Include a brief description of the impact of environmental parameter being assessed in the context of the project. This criterion includes a brief written statement of the environmental aspect being impacted upon by a particular action or activity.		
<b>GEOGRAPHICAL EXTENT</b>		
This is defined as the area over which the impact will be experienced.		
1	Site	The impact will only affect the site.
2	Local/district	Will affect the local area or district.
3	Province/region	Will affect the entire province or region.
4	International and National	Will affect the entire country.
<b>PROBABILITY</b>		
This describes the chance of occurrence of an impact.		
1	Unlikely	The chance of the impact occurring is extremely low (Less than a 25% chance of occurrence).
2	Possible	The impact may occur (Between a 25% to 50% chance of occurrence).
3	Probable	The impact will likely occur (Between a 50% to 75% chance of occurrence).
4	Definite	Impact will certainly occur (Greater than a 75% chance of occurrence).
<b>DURATION</b>		
This describes the duration of the impacts. Duration indicates the lifetime of the impact as a result of the proposed activity.		
1	Short term	The impact will either disappear with mitigation or will be mitigated through natural processes in a span shorter than the construction phase (0 – 1 years), or the impact will last for the period of a relatively short construction



		period and a limited recovery time after construction, thereafter it will be entirely negated (0 – 2 years).
2	Medium term	The impact will continue or last for some time after the construction phase but will be mitigated by direct human action or by natural processes thereafter (2 – 10 years).
3	Long term	The impact and its effects will continue or last for the entire operational life of the development, but will be mitigated by direct human action or by natural processes thereafter (10 – 30 years).
4	Permanent	The only class of impact that will be non-transitory. Mitigation either by man or natural process will not occur in such a way or such a time span that the impact can be considered indefinite.
<b>INTENSITY/ MAGNITUDE</b>		
Describes the severity of an impact.		
1	Low	Impact affects the quality, use and integrity of the system/component in a way that is barely perceptible.
2	Medium	Impact alters the quality, use and integrity of the system/component but system/component still continues to function in a moderately modified way and maintains general integrity (some impact on integrity).
3	High	Impact affects the continued viability of the system/component and the quality, use, integrity and functionality of the system or component is severely impaired and may temporarily cease. High costs of rehabilitation and remediation.
4	Very high	Impact affects the continued viability of the system/component and the quality, use, integrity and functionality of the system or component permanently ceases and is irreversibly impaired. Rehabilitation and remediation often impossible. If possible rehabilitation



		and remediation often unfeasible due to extremely high costs of rehabilitation and remediation.
<b>REVERSIBILITY</b>		
This describes the degree to which an impact can be successfully reversed upon completion of the proposed activity.		
1	Completely reversible	The impact is reversible with implementation of minor mitigation measures.
2	Partly reversible	The impact is partly reversible but more intense mitigation measures are required.
3	Barely reversible	The impact is unlikely to be reversed even with intense mitigation measures.
4	Irreversible	The impact is irreversible and no mitigation measures exist.
<b>IRREPLACEABLE LOSS OF RESOURCES</b>		
This describes the degree to which resources will be irreplaceably lost as a result of a proposed activity.		
1	No loss of resource	The impact will not result in the loss of any resources.
2	Marginal loss of resource	The impact will result in marginal loss of resources.
3	Significant loss of resources	The impact will result in significant loss of resources.
4	Complete loss of resources	The impact is result in a complete loss of all resources.
<b>CUMULATIVE EFFECT</b>		
This describes the cumulative effect of the impacts. A cumulative impact is an effect which in itself may not be significant but may become significant if added to other existing or potential impacts emanating from other similar or diverse activities as a result of the project activity in question.		
1	Negligible cumulative impact	The impact would result in negligible to no cumulative effects.
2	Low cumulative impact	The impact would result in insignificant cumulative effects.



3	Medium cumulative impact	The impact would result in minor cumulative effects.
4	High cumulative impact	The impact would result in significant cumulative effects
<b>SIGNIFICANCE</b>		
<p>Significance is determined through a synthesis of impact characteristics. Significance is an indication of the importance of the impact in terms of both physical extent and time scale, and therefore indicates the level of mitigation required. The calculation of the significance of an impact uses the following formula: (Extent + probability + reversibility + irreplaceability + duration + cumulative effect) x magnitude/intensity.</p> <p>The summation of the different criteria will produce a non-weighted value. By multiplying this value with the magnitude/intensity, the resultant value acquires a weighted characteristic which can be measured and assigned a significance rating.</p>		
Points	Impact significance rating	Description
6 to 28	Negative low impact	The anticipated impact will have negligible negative effects and will require little to no mitigation.
6 to 28	Positive low impact	The anticipated impact will have minor positive effects.
29 to 50	Negative medium impact	The anticipated impact will have moderate negative effects and will require moderate mitigation measures.
29 to 50	Positive medium impact	The anticipated impact will have moderate positive effects.
51 to 73	Negative high impact	The anticipated impact will have significant effects and will require significant mitigation measures to achieve an acceptable level of impact.
51 to 73	Positive high impact	The anticipated impact will have significant positive effects.
74 to 96	Negative very high impact	The anticipated impact will have highly significant effects and are unlikely to be able to be mitigated adequately. These impacts could be considered "fatal flaws".
74 to 96	Positive very high impact	The anticipated impact will have highly significant positive effects.



(Extent + probability + reversibility + irreplaceability + duration + cumulative effect) x magnitude/intensity

**Table 9: Summary of Impacts**

<b>Impacts</b>	<b>Extent</b>	<b>Duration</b>	<b>Magnitude</b>	<b>Reversibility</b>	<b>Irreplaceable loss</b>	<b>Cumulative effect</b>	<b>Impact</b>
<b>Pre-mitigation</b>	1	4	2	4	4	2	30
<b>Post mitigation</b>	1	4	1	4	4	2	15

### 10.3 Cumulative Impacts

The geographic area of evaluation is the spatial boundary in which the cumulative effects analysis was undertaken. The spatial boundary evaluated in this cumulative effects analysis generally includes an area of a 30km radius surrounding the proposed development – refer to below.



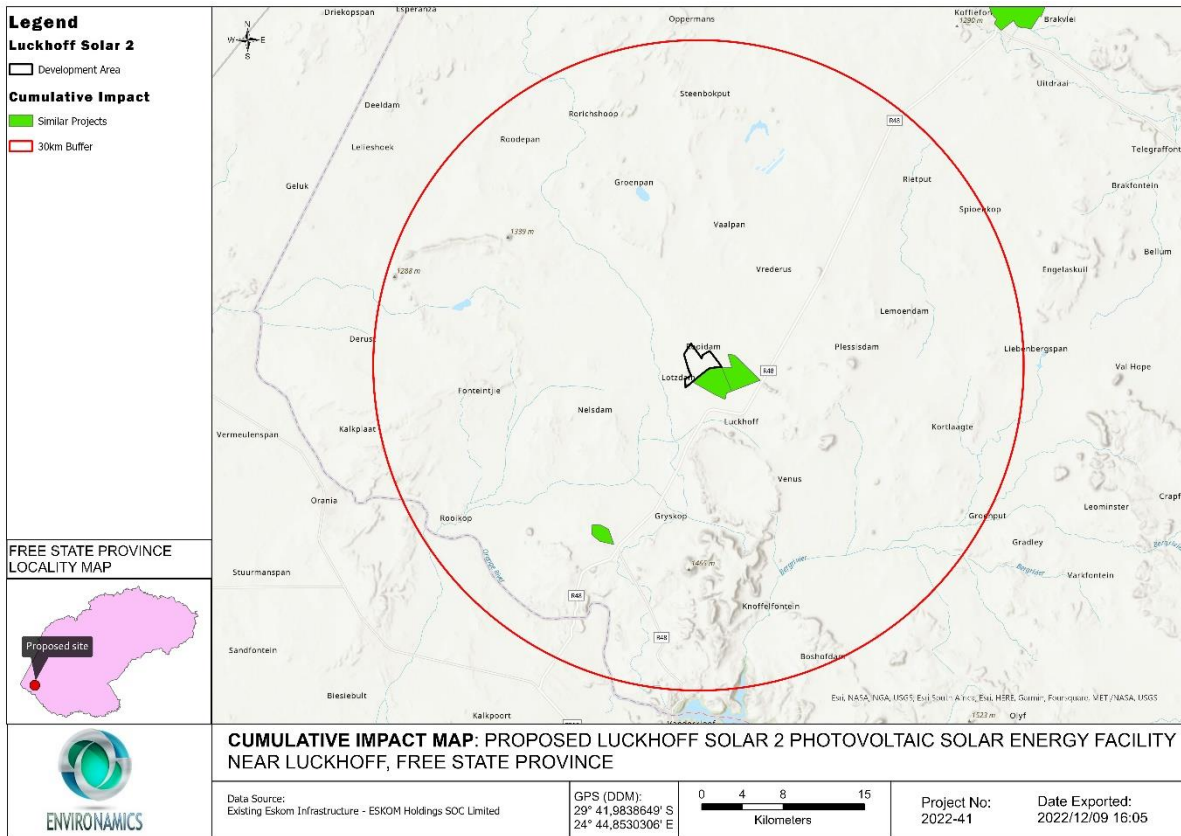


Figure 6: Cumulative Impact Map: Luckhoff Solar 2 Solar Energy Facility.

The geographic spread of PV solar projects, administrative boundaries and any environmental features (the nature of the landscape) were considered when determining the geographic area of investigation. It was argued that a radius of 30km would generally confine the potential for cumulative effects within this particular environmental landscape. The geographic area includes projects located within the Limpopo Province specific temporal or spatial impacts of a resource. For example, the socioeconomic cumulative analysis may include a larger area, as the construction workforce may draw from a much wider area. The geographic area of analysis is specified in the discussion of the cumulative impacts for that resource where it differs from the general area of evaluation described above.

A temporal boundary is the timeframe during which the cumulative effects are reasonably expected to occur. The temporal parameters for these cumulative effects analysis is the anticipated lifespan of the Proposed Project, beginning in 2022 and extending out at least 20 years, which is the minimum expected project life of the proposed project. Where appropriate, particular focus is on near-term cumulative impacts of overlapping construction schedules for proposed projects in the area of evaluation.

The general Palaeontological Sensitivity of the area is Low to High (see SAHRIS Palaeomap (Figure 4). However, it is important to note that the quality of preservation of these different sites will most probably vary and it is thus difficult to allocate a Cumulative Sensitivity to the projects. If all the mitigation



measures are carried out, a conservative estimate of the Cumulative impacts on fossil Heritage will vary between Low and Medium.

**Table 10:** A summary of related facilities that may have a cumulative impact, in a 30 km radius of Luckhoff Solar.

Site name	Distance from study area	Proposed generating capacity	DFFE reference	EIA process	Project status
Luckhoff Solar 1	0km	240MW	To be confirmed	S&EIA	In Process
Luckhoff Solar 3	0km	240MW	To be confirmed	S&EIA	In Process
Grootpoort PV	16km	100MW	14/12/16/3/3/2/835	S&EIA	Approved

It is unclear whether other projects not related to renewable energy is or has been constructed in this area, and whether other projects are proposed. In general, development activity in the area is focused on agriculture and mining. It is quite possible that future solar farm development may take place within the general area.

## 11 FINDINGS AND RECOMMENDATIONS

The proposed development is underlain by Quaternary aeolian sand, calcrete with a small portion underlain by Jurassic Dolerite of the Karoo Igneous Province. The PalaeoMap of the South African Heritage Resources Information System (SAHRIS) indicates that the Palaeontological Sensitivity of the calcretes is High, Quaternary sands has a Moderate Palaeontological Sensitivity while that of the Jurassic dolerite of the Karoo Igneous Province is Zero as it is igneous in origin (Almond and Pether, 2009; Almond *et al.*, 2013). Update geology (Council for Geosciences, Pretoria) indicates that the proposed Luckhoff 2 SPP is underlain by calcrete, surface limestones and Hardpan as well as alluvium, colluvium, eluvium, gravel, scree, sand, soil and debris.

It is considered that the proposed Luckhoff 2 Solar Energy Facility in the Free State will not lead to detrimental impacts on the palaeontological resources of the area. The construction of the development may therefore be authorised as the development footprint is not considered sensitive in terms of palaeontological resources. **It is consequently recommended that no further palaeontological heritage**



**studies, ground truthing and/or specialist mitigation are required pending the discovery of newly discovered fossils.**

If significant fossil remains are discovered during any phase of construction, either on the surface or uncovered by excavations, the ECO/site manager in charge of these developments must be notified immediately. These discoveries must be secured and the ECO/site manager must alert SAHRA so that appropriate mitigation (documented and collection) can be undertaken by a professional palaeontologist (Contact details: SAHRA, 111 Harrington Street, Cape Town. PO Box 4637, Cape Town 8000, South Africa. Tel: 021 462 4502. Fax: +27 (0)21 462 4509. Web: [www.sahra.org.za](http://www.sahra.org.za)). The specialist would need a collection permit from SAHRA. Fossil material must be curated in an approved collection (museum or university) and all fieldwork and reports must meet the minimum standards for palaeontological impact studies developed by SAHRA.

## **12 BIBLIOGRAPHY**

- Almond, J., and Pether, J. 2009. Palaeotechnical report: Palaeontological Heritage of the Northern Cape., Almond, J., Pether, J, And Groenewald, G. 2013. South African National Fossil Sensitivity Map. SAHRA and Council for Geosciences. Schweitzer *et al.* (1995) pp p288.
- Almond, J.E. 2016. Proposed Grootpoort Photovoltaic Solar Energy facility near Luckhoff, Free State Province.
- Barnosky, A.D. 2005. Effects of Quaternary Climatic Change on Speciation in Mammals. *Journal of Mammalian Evolution*. 12:247-264
- Bender, P.A. & Brink, J.S. 1992. A preliminary report on new large mammal fossil finds from the Cornelia-Uitzoek site. *South African Journal of Science* 88: 512-515.
- Bosch, P.J.A. 1993. Die geologie van die gebied Kimberley. Explanation to 1: 250 000 geology Sheet 2824 Kimberley, 60 pp. Council for Geoscience, Pretoria.
- Bousman, C.B. et al. 1988. Palaeoenvironmental implications of Late Pleistocene and Holocene valley fills in Blydefontein Basin, Noupoot, C.P., South Africa. *Palaeoecology of Africa* 19: 43-67.
- Braddy, S.J. & Briggs, D.E.G. 2002. New Lower Permian nonmarine arthropod trace fossils from New Mexico and South Africa. *Journal of Paleontology* 76: 546-557.
- Brink, J.S. 1987. The archaeozoology of Florisbad, Orange Free State. *Memoirs of the National Museum* 24: 1 – 151.
- Brink, J.S. 2012. The post-1.0 Ma evolution of large mammal endemism in southern Africa in relation to East Africa and subsequent biogeographic isolation of the Cape coastal region. *Quaternary International* vol. 279–280: 69.
- Brink, J.S. 2016. Faunal evidence for mid- and late Quaternary environmental change in southern Africa. In: Knight, J. and Grab, S.W. (eds) *Quaternary environmental change in southern Africa: physical and human dimensions*. Cambridge University Press, pp. 286-307



- Brink, J.S. et al. 1995. A new find of *Megalotragus priscus* (Alcephalini, Bovidae) from the Central Karoo, South Africa. *Palaeontologia africana* 32: 17-22.
- Brink, J.S., Berger, L.R., Churchill, S.E. 1999. Mammalian Fossils from Erosional Gullies (Dongas) In the Doring River Drainage, Central Free State Province, South Africa, pp. 79-90. In: Becker, C., Manhart, H., Peters, J., Schibler, J. (eds), *Historia Animalium ex Ossibus. Beiträge zur Paläoanatomie, Archäologie, Ägyptologie, Ethnologie und Geschichte der Tiermedizin: Festschrift für Angela Von Den Driesch zum 65. Geburtstag*. Rahden/Westf.: Verlag Marie Leidorf GmbH.
- Churchill, S.E. et al. 2000. Erfkroon: a new Florisian fossil locality from fluvial contexts in the western Free State, South Africa. *South African Journal of Science* 96: 161-163.
- Cole, D.I., Neveling, J., Hattingh, J., Chevallier, L.P., Reddering, J.S.V. & Bender, P.A. 2004. The geology of the Middelburg area. Explanation to 1: 250 000 geological sheet 3124 Middelburg, 43 pp. Council for Geoscience, Pretoria.
- Cooke, H.B.S. 1974. The fossil mammals of Cornelia, O.F.S., South Africa. In: Butzer, K.W., Clark, J.D. & Cooke, H.B.S. (Eds.) *The geology, archaeology and fossil mammals of the Cornelia Beds, O.F.S.* *Memoirs of the National Museum, Bloemfontein* 9: 63-84.
- Cramer, M.D., Innes, S.N. & Midgley, J.J. 2012. Hard evidence that *heuweltjie* earth mounds are relictual features produced by differential erosion, *Palaeogeography, Palaeoclimatology, Palaeoecology*. doi: 10.1016/j.palaeo.2012.06.030
- De Ruiter, Darryl J.; Brophy, Juliet K.; Lewis, Patrick J.; Kennedy, Alicia M.; Stidham, Thomas A.; Carlson, Keely B.; Hancox, P. John. 2010. *Preliminary investigation of the Matjhabeng, a Pliocene fossil locality in the Free State of South Africa*. <http://hdl.handle.net/10539/13821>
- De Wit, M.C.J., Marshall, T.R. & Partridge, T.C. 2000. Fluvial deposits and drainage evolution. In: Partridge, T.C. & Maud, R.R. (Eds.) *The Cenozoic of southern Africa*, pp.55-72. Oxford University Press, Oxford.
- Dingle, R.V., Siesser, W.G. & Newton, A.R. 1983. *Mesozoic and Tertiary geology of southern Africa*. viii + 375 pp. Balkema, Rotterdam.
- Duncan, R.A., Hooper, P.R., Rehacek, J., Marsh J.S., And Duncan A.R., 1997. The timing and duration of the Karoo igneous event, southern Gondwana. *Journal of Geophysical Research*, v. 102, p. 18127–18138, doi: 10.1029/97JB00972.
- Duncan, R.A., Hooper, P.R., Rehacek, J., Marsh J.S. and Duncan, A.R., 1997. The timing and duration of the Karoo igneous event, southern Gondwana. *Journal of Geophysical Research*, 102, 18127-18138.
- Eales, H.V., Marsh, J.S. and Cox, K.G. (1984). The Karoo Igneous Province: an introduction. In: Erlank, A.J. (Ed.), *Petrogenesis of the Volcanic Rocks of the Karoo Province*. *Spec. Publ. Geol. Soc. S. Afr.*, 13, 1–26
- Environamics (2022). Project Description Document: The Development of the Luckhoff Solar 2 Photovoltaic Solar Energy Facility, near Luckhoff, Free State Province.
- Groenewald G.H., et al., 2014. *Palaeontological Heritage of the Free state Province Palaeotechnical Report*, SAHRA.



- Haddon, I.G. 2000. Kalahari Group sediments. In: Partridge, T.C. & Maud, R.R. (Eds.) The Cenozoic of southern Africa, pp. 173-181. Oxford University Press, Oxford.
- Haddon, I.G. 2005. The sub-Kalahari geology and tectonic evolution of the Kalahari Basin, Southern Africa. Unpublished PhD thesis, University of Johannesburg, 343 pp.
- Hunter, D.R., Johnson, M.R., Anhaeusser, C. R. and Thomas, R.J. 2006. Introduction. (In: Johnson, M.R., Anhaeusser, C.R. and Thomas, R.J. (Eds), *The Geology of South Africa*. Geological Society of South Africa, Johannesburg/Council for Geoscience, Pretoria, 585-604.)
- Johnson, M.R., Van Vuuren, C.J., Visser, J.N.J., Cole, D.I., Wickens, H. De V., Christie, A.D.M., Roberts, D.L. & Brandl, G. 2006. Sedimentary rocks of the Karoo Supergroup. In: Johnson. M.R., Anhaeusser, C.R. & Thomas, R.J. (eds.) The geology of South Africa, pp. 461-499. Geological Society of South Africa, Johannesburg & the Council for Geoscience, Pretoria
- Kent, L. E., 1980. Part 1: Lithostratigraphy of the Republic of South Africa, South West Africa/Namibia and the Republics of Bophuthatswana, Transkei, and Venda. SACS, Council for Geosciences.
- Klein, C. & Beukes, N.J. 1989. Geochemistry and sedimentology of a facies transition from limestone to iron formation deposition in the early Proterozoic Transvaal Supergroup, South Africa. *Economic Geology* 84, 1733-1774.
- Klein, R.G. 1984. The large mammals of southern Africa: Late Pliocene to Recent. In: Klein, R.G. (Ed.) Southern African prehistory and paleoenvironments, pp 107-146. Balkema, Rotterdam.
- Lewis, Patrick J.; Brink, James S.; Kennedy, Alicia M.; Campbell, Timothy L. (2011). "Examination of the Florisbad microvertebrates". *South African Journal of Science*.107(7/8). MACRAE, C. 1999. Life etched in stone. Fossils of South Africa. 305 pp. The Geological Society of South Africa, Johannesburg.
- Mac Rae C. 1999. Life etched in stone: fossils of South Africa. The Geological Society of South Africa, Johannesburg, pp 305.
- Marchetti, L., Klein, H., Buchwitz, M., Ronchi, A., Smith, R.M.H., De Klerk, E., Sciscio, L. and Meiring, A.J.D. 1955. Fossil Proboscidean teeth and ulna from Virginia, OFS. *Navorsing van die Nasionale Museum*, Bloemfontein 1, 187–201.
- Maud, R. 2012. Macroscale Geomorphic Evolution. (In Holmes, P. and Meadows, M. Southern Africa Geomorphology, New trends and new directions. Bloemfontein: Sun Press. p. 7- 21)
- McCarthy, T. & Rubidge, B. 2005. The story of Earth and life: a southern African perspective on a 4.6-billion-year journey. 334pp. Struik, Cape Town.
- Partridge TC., Botha GA., & Haddon IG. 2006. Cenozoic deposits of the interior. In: Johnson MR, Anhaeusser and Thomas RJ (Eds). The Geology of South Africa. Geological Society of South Africa, Johannesburg/Council for Geoscience, Pretoria. pp. 585-604.
- Partridge, T.C. & Scott, L. 2000. Lakes and pans. In: Partridge, T.C. & Maud, R.R. (Eds.) The Cenozoic of southern Africa, pp.145 - 161. Oxford University Press, Oxford.



- S.A.C.S. (South African Committee for Stratigraphy), 1980. Stratigraphy of South Africa. Part 1. Lithostratigraphy of the Republic of South Africa, South West Africa/Namibia, and the Republics of Bophuthatswana, Transkei, and Venda. Handbook of the Geological Survey of South Africa, 8, 690pp SAHRA. 2013. Minimum standards: palaeontological component of heritage impact assessment reports. South African Heritage Resources Agency, Cape Town. pp15.
- Scott, L. & Rossouw, L. 2005 Reassessment of botanical evidence for palaeoenvironments at Florisbad, South Africa. *South African Archaeological Bulletin* 60: 96-102.
- Scott, L. & J.S. Brink. 1992. Quaternary palynology, palaeontology and palaeoenvironments in central South Africa. *South African Geographer* 19: 22-34.
- Scott, L. and Klein, R.G. 1981. A hyena-accumulated bone assemblage from Late Holocene deposits at Deelpan, Orange Free State. *Annals of the South African Museum* 86(6): 217 – 227.
- Thomas, D.S.G. & Shaw, P.A. 1991. The Kalahari environment, 284 pp. Cambridge University Press
- Visser, D.J.L. (ed) 1984. Geological Map of South Africa 1:100 000. South African Committee for Stratigraphy, Council for Geoscience, Pretoria.
- Visser, D.J.L. (ed) 1989. *Toeligting: Geologiese kaart (1:100 000). Die Geologie van die Republieke van Suid Afrika, Transkei, Bophuthatswana, Venda, Ciskei en die Koningkryke van Lesotho en Swaziland*. South African Committee for Stratigraphy. Council for Geoscience, Pretoria, Pp 494.



## APPENDIX A

### CURRICULUM VITAE

#### ELIZE BUTLER

PROFESSION: Palaeontologist

YEARS' EXPERIENCE: 30 years in Palaeontology

EDUCATION: B.Sc Botany and Zoology, 1988  
University of the Orange Free State

B. Sc (Hons) Zoology, 1991  
University of the Orange Free State

Management Course, 1991  
University of the Orange Free State

M. Sc. *Cum laude* (Zoology), 2009  
University of the Free State

Dissertation title: The postcranial skeleton of the Early Triassic non-mammalian Cynodont *Galesaurus planiceps*: implications for biology and lifestyle

#### MEMBERSHIP

Palaeontological Society of South Africa (PSSA) 2006-currently

#### EMPLOYMENT HISTORY

Part time Laboratory assistant	Department of Zoology & Entomology University of the Free State Zoology 1989-1992
Part time laboratory assistant	Department of Virology University of the Free State Zoology 1992
Research Assistant	National Museum, Bloemfontein 1993 – 1997
Principal Research Assistant and Collection Manager	National Museum, Bloemfontein 1998–2022



## TECHNICAL REPORTS

- Butler, E. 2014. Palaeontological Impact Assessment of the proposed development of private dwellings on portion 5 of farm 304 Matjesfontein Keurboomstrand, Knysna District, Western Cape Province. Bloemfontein.
- Butler, E. 2014. Palaeontological Impact Assessment for the proposed upgrade of existing water supply infrastructure at Noupoot, Northern Cape Province. 2014. Bloemfontein.
- Butler, E. 2015. Palaeontological impact assessment of the proposed consolidation, re-division, and development of 250 serviced erven in Nieu-Bethesda, Camdeboo local municipality, Eastern Cape. Bloemfontein.
- Butler, E. 2015. Palaeontological impact assessment of the proposed mixed land developments at Rooikraal 454, Vrede, Free State. Bloemfontein.
- Butler, E. 2015. Palaeontological exemption report of the proposed truck stop development at Palmiet 585, Vrede, Free State. Bloemfontein.
- Butler, E. 2015. Palaeontological impact assessment of the proposed Orange Grove 3500 residential development, Buffalo City Metropolitan Municipality East London, Eastern Cape. Bloemfontein.
- Butler, E. 2015. Palaeontological Impact Assessment of the proposed Gonubie residential development, Buffalo City Metropolitan Municipality East London, Eastern Cape Province. Bloemfontein.
- Butler, E. 2015. Palaeontological Impact Assessment of the proposed Ficksburg raw water pipeline. Bloemfontein.
- Butler, E. 2015. Palaeontological Heritage Impact Assessment report on the establishment of the 65 mw Majuba Solar Photovoltaic facility and associated infrastructure on portion 1, 2 and 6 of the farm Witkoppies 81 HS, Mpumalanga Province. Bloemfontein.
- Butler, E. 2015. Palaeontological Impact Assessment of the proposed township establishment on the remainder of portion 6 and 7 of the farm Sunnyside 2620, Bloemfontein, Mangaung metropolitan municipality, Free State, Bloemfontein.
- Butler, E. 2015. Palaeontological Impact Assessment of the proposed Woodhouse 1 photovoltaic solar energy facilities and associated infrastructure on the farm Woodhouse729, near Vryburg, North West Province. Bloemfontein.
- Butler, E. 2015. Palaeontological Impact Assessment of the proposed Woodhouse 2 photovoltaic solar energy facilities and associated infrastructure on the farm Woodhouse 729, near Vryburg, North West Province. Bloemfontein.
- Butler, E. 2015. Palaeontological Impact Assessment of the proposed Orkney solar energy farm and associated infrastructure on the remaining extent of Portions 7 and 21 of the farm Wolvehuis 114, near Orkney, North West Province. Bloemfontein.
- Butler, E. 2015. Palaeontological Impact Assessment of the proposed Spectra foods broiler houses and abattoir on the farm Maiden Manor 170 and Ashby Manor 171, Lukhanji Municipality, Queenstown, Eastern Cape Province. Bloemfontein.
- Butler, E. 2016. Palaeontological Impact Assessment of the proposed construction of the 150 MW Noupoot concentrated solar power facility and associated infrastructure on portion 1 and 4 of the farm Carolus Poort 167 and the remainder of Farm 207, near Noupoot, Northern Cape. Prepared for Savannah Environmental. Bloemfontein.
- Butler, E. 2016. Palaeontological Impact Assessment of the proposed Woodhouse 1 Photovoltaic Solar Energy facility and associated infrastructure on the farm Woodhouse 729, near Vryburg, North West Province. Bloemfontein.
- Butler, E. 2016. Palaeontological Impact Assessment of the proposed Woodhouse 2 Photovoltaic Solar Energy facility and associated infrastructure on the farm Woodhouse 729, near Vryburg, North West Province. Bloemfontein.
- Butler, E. 2016. Proposed 132kV overhead power line and switchyard station for the authorised Solis Power 1 CSP project near Upington, Northern Cape. Bloemfontein.
- Butler, E. 2016. Palaeontological Impact Assessment of the proposed Senqu Pedestrian Bridges in Ward 5 of Senqu Local Municipality, Eastern Cape Province. Bloemfontein.





- Butler, E. 2016. Recommendation from further Palaeontological Studies: Proposed Construction of the Modderfontein Filling Station on Erf 28 Portion 30, Founders Hill, City of Johannesburg, Gauteng Province. Bloemfontein.
- Butler, E. 2016. Recommendation from further Palaeontological Studies: Proposed Construction of the Modikwa Filling Station on a Portion of Portion 2 of Mooihoek 255 Kt, Greater Tubatse Local Municipality, Limpopo Province. Bloemfontein.
- Butler, E. 2016. Recommendation from further Palaeontological Studies: Proposed Construction of the Heidedal filling station on Erf 16603, Heidedal Extension 24, Mangaung Local Municipality, Bloemfontein, Free State Province. Bloemfontein.
- Butler, E. 2016. Recommended Exemption from further Palaeontological studies: Proposed Construction of the Gunstfontein Switching Station, 132kv Overhead Power Line (Single or Double Circuit) and ancillary infrastructure for the Gunstfontein Wind Farm Near Sutherland, Northern Cape Province. Savannah South Africa. Bloemfontein.
- Butler, E. 2016. Palaeontological Impact Assessment of the proposed Galla Hills Quarry on the remainder of the farm Roode Krantz 203, in the Lukhanji Municipality, division of Queenstown, Eastern Cape Province. Bloemfontein.
- Butler, E. 2016. Chris Hani District Municipality Cluster 9 water backlog project phases 3a and 3b: Palaeontology inspection at Tsomo WTW. Bloemfontein.
- Butler, E. 2016. Palaeontological Impact Assessment of the proposed construction of the 150 MW Noupoort concentrated solar power facility and associated infrastructure on portion 1 and 4 of the farm Carolus Poort 167 and the remainder of Farm 207, near Noupoort, Northern Cape. Savannah South Africa. Bloemfontein.
- Butler, E. 2016. Palaeontological Impact Assessment of the proposed upgrading of the main road MR450 (R335) from Motherwell to Addo within the Nelson Mandela Bay Municipality and Sunday's River valley Local Municipality, Eastern Cape Province. Bloemfontein.
- Butler, E. 2016. Palaeontological Impact Assessment construction of the proposed Metals Industrial Cluster and associated infrastructure near Kuruman, Northern Cape Province. Savannah South Africa. Bloemfontein.
- Butler, E. 2016. Palaeontological Impact Assessment for the proposed construction of up to a 132kv power line and associated infrastructure for the proposed Kalkaar Solar Thermal Power Plant near Kimberley, Free State and Northern Cape Provinces. PGS Heritage. Bloemfontein.
- Butler, E. 2016. Palaeontological Impact Assessment of the proposed development of two burrow pits (DR02625 and DR02614) in the Enoch Mgijima Municipality, Chris Hani District, Eastern Cape.
- Butler, E. 2016. Ezibeleni waste Buy-Back Centre (near Queenstown), Enoch Mgijima Local Municipality, Eastern Cape. Bloemfontein.
- Butler, E. 2016. Palaeontological Impact Assessment for the proposed construction of two 5 Mw Solar Photovoltaic Power Plants on Farm Wildebeestkuil 59 and Farm Leeuwbosch 44, Leeudoringstad, North West Province. Bloemfontein.
- Butler, E. 2016. Palaeontological Impact Assessment for the proposed development of four Leeuwberg Wind farms and basic assessments for the associated grid connection near Loeriesfontein, Northern Cape Province. Bloemfontein.
- Butler, E. 2016. Palaeontological impact assessment for the proposed Aggeneys south prospecting right project, Northern Cape Province. Bloemfontein.
- Butler, E. 2016. Palaeontological impact assessment of the proposed Motuoane Ladysmith Exploration right application, KwaZulu Natal. Bloemfontein.
- Butler, E. 2016. Palaeontological impact assessment for the proposed construction of two 5 MW solar photovoltaic power plants on farm Wildebeestkuil 59 and farm Leeuwbosch 44, Leeudoringstad, North West Province. Bloemfontein.
- Butler, E. 2016: Palaeontological desktop assessment of the establishment of the proposed residential and mixed-use development on the remainder of portion 7 and portion 898 of the farm Knopjeslaagte 385 Ir, located near Centurion within the Tshwane Metropolitan Municipality of Gauteng Province. Bloemfontein.
- Butler, E. 2017. Palaeontological impact assessment for the proposed development of a new cemetery, near Kathu, Gamagara local municipality and John Taolo Gaetsewe district municipality, Northern Cape. Bloemfontein.



Butler, E. 2017. Palaeontological Impact Assessment of The Proposed Development of The New Open Cast Mining Operations on The Remaining Portions Of 6, 7, 8 And 10 Of the Farm Kwaggafontein 8 In the Carolina Magisterial District, Mpumalanga Province. Bloemfontein.

Butler, E. 2017. Palaeontological Desktop Assessment for the Proposed Development of a Wastewater Treatment Works at Lanseria, Gauteng Province. Bloemfontein.

Butler, E. 2017. Palaeontological Scoping Report for the Proposed Construction of a Warehouse and Associated Infrastructure at Perseverance in Port Elizabeth, Eastern Cape Province.

Butler, E. 2017. Palaeontological Desktop Assessment for the Proposed Establishment of a Diesel Farm and a Haul Road for the Tshipi Borwa mine Near Hotazel, In the John Taolo Gaetsewe District Municipality in the Northern Cape Province. Bloemfontein.

Butler, E. 2017. Palaeontological Desktop Assessment for the Proposed Changes to Operations at the UMK Mine near Hotazel, In the John Taolo Gaetsewe District Municipality in the Northern Cape Province. Bloemfontein.

Butler, E. 2017. Palaeontological Impact Assessment for the Development of the Proposed Ventersburg Project-An Underground Mining Operation near Ventersburg and Henneman, Free State Province. Bloemfontein.

Butler, E. 2017. Palaeontological desktop assessment of the proposed development of a 3000 MW combined cycle gas turbine (CCGT) in Richards Bay, Kwazulu-Natal. Bloemfontein.

Butler, E. 2017. Palaeontological Impact Assessment for the Development of the Proposed Revalidation of the lapsed General Plans for Elliotdale, Mbashe Local Municipality. Bloemfontein.

Butler, E. 2017. Palaeontological assessment of the proposed development of a 3000 MW Combined Cycle Gas Turbine (CCGT) in Richards Bay, Kwazulu-Natal. Bloemfontein.

Butler, E. 2017. Palaeontological Impact Assessment of the proposed development of the new open cast mining operations on the remaining portions of 6, 7, 8 and 10 of the farm Kwaggafontein 8 10 in the Albert Luthuli Local Municipality, Gert Sibande District Municipality, Mpumalanga Province. Bloemfontein.

Butler, E. 2017. Palaeontological Impact Assessment of the proposed mining of the farm Zandvoort 10 in the Albert Luthuli Local Municipality, Gert Sibande District Municipality, Mpumalanga Province. Bloemfontein.

Butler, E. 2017. Palaeontological Desktop Assessment for the proposed Lanseria outfall sewer pipeline in Johannesburg, Gauteng Province. Bloemfontein.

Butler, E. 2017. Palaeontological Desktop Assessment of the proposed development of open pit mining at Pit 36W (New Pit) and 62E (Dishaba) Amandelbult Mine Complex, Thabazimbi, Limpopo Province. Bloemfontein.

Butler, E. 2017. Palaeontological impact assessment of the proposed development of the sport precinct and associated infrastructure at Merrifield Preparatory school and college, Amathole Municipality, East London. PGS Heritage. Bloemfontein.

Butler, E. 2017. Palaeontological impact assessment of the proposed construction of the Lehae training and fire station, Lenasia, Gauteng Province. Bloemfontein.

Butler, E. 2017. Palaeontological Desktop Assessment of the proposed development of the new open cast mining operations of the Impunzi mine in the Mpumalanga Province. Bloemfontein.

Butler, E. 2017. Palaeontological Desktop Assessment of the construction of the proposed Viljoenskroon Munic 132 KV line, Vierfontein substation and related projects. Bloemfontein.

Butler, E. 2017. Palaeontological Desktop Assessment of the proposed rehabilitation of 5 ownerless asbestos mines. Bloemfontein.

Butler, E. 2017. Palaeontological Desktop Assessment of the proposed development of the Lephalale coal and power project, Lephalale, Limpopo Province, Republic of South Africa. Bloemfontein.

Butler, E. 2017. Palaeontological Impact Assessment of the proposed construction of a 132KV powerline from the Tweespruit distribution substation (in the Mantsopa local municipality) to the Driedorp rural substation (within the Naledi local municipality), Free State province. Bloemfontein.

Butler, E. 2017. Palaeontological Desktop Assessment of the proposed development of the new coal-fired power plant and associated infrastructure near Makhado, Limpopo Province. Bloemfontein.

Butler, E. 2017. Palaeontological Impact Assessment of the proposed construction of a Photovoltaic Solar Power station near Collett substation, Middelburg, Eastern Cape. Bloemfontein.



- Butler, E. 2017. Palaeontological Impact Assessment for the proposed township establishment of 2000 residential sites with supporting amenities on a portion of farm 826 in Botshabelo West, Mangaung Metro, Free State Province. Bloemfontein.
- Butler, E. 2017. Palaeontological Desktop Assessment for the proposed prospecting right project without bulk sampling, in the Koa Valley, Northern Cape Province. Bloemfontein.
- Butler, E. 2017. Palaeontological Desktop Assessment for the proposed Aroams prospecting right project, without bulk sampling, near Aggeneys, Northern Cape Province. Bloemfontein.
- Butler, E. 2017. Palaeontological Impact Assessment of the proposed Belvior aggregate quarry II on portion 7 of the farm Maidenhead 169, Enoch Mgijima Municipality, division of Queenstown, Eastern Cape. Bloemfontein.
- Butler, E. 2017. PIA site visit and report of the proposed Galla Hills Quarry on the remainder of the farm Roode Krantz 203, in the Lukhanji Municipality, division of Queenstown, Eastern Cape Province. Bloemfontein.
- Butler, E. 2017. Palaeontological Impact Assessment of the proposed construction of Tina Falls Hydropower and associated power lines near Cumbu, Mthlontlo Local Municipality, Eastern Cape. Bloemfontein.
- Butler, E. 2017. Palaeontological Desktop Assessment of the proposed construction of the Mangaung Gariep Water Augmentation Project. Bloemfontein.
- Butler, E. 2017. Palaeontological Impact Assessment of the proposed Belvoir aggregate quarry II on portion 7 of the farm Maidenhead 169, Enoch Mgijima Municipality, division of Queenstown, Eastern Cape. Bloemfontein.
- Butler, E. 2017. Palaeontological Impact Assessment of the proposed construction of the Melkspruit-Rouxville 132KV Power line. Bloemfontein.
- Butler, E. 2017. Palaeontological Desktop Assessment of the proposed development of a railway siding on a Portion of portion 41 of the farm Rustfontein 109 is, Govan Mbeki local municipality, Gert Sibande district municipality, Mpumalanga Province. Bloemfontein.
- Butler, E. 2017. Palaeontological Impact Assessment of the proposed consolidation of the proposed Ilima Colliery in the Albert Luthuli local municipality, Gert Sibande District Municipality, Mpumalanga Province. Bloemfontein.
- Butler, E. 2017. Palaeontological Desktop Assessment of the proposed extension of the Kareerand Tailings Storage Facility, associated borrow pits as well as a storm water drainage channel in the Vaal River near Stilfontein, North West Province. Bloemfontein.
- Butler, E. 2017. Palaeontological Desktop Assessment of the proposed construction of a filling station and associated facilities on the Erf 6279, district municipality of John Taolo Gaetsewe District, Ga-Segonyana Local Municipality Northern Cape. Bloemfontein.
- Butler, E. 2017. Palaeontological Desktop Assessment of the proposed of the Lephallale Coal and Power Project, Lephallale, Limpopo Province, Republic of South Africa. Bloemfontein.
- Butler, E. 2017. Palaeontological Desktop Assessment of the proposed Overvaal Trust PV Facility, Buffelspoort, North West Province. Bloemfontein.
- Butler, E. 2017. Palaeontological Impact Assessment of the proposed development of the H<sub>2</sub> Energy Power Station and associated infrastructure on Portions 21; 22 And 23 of the farm Hartebeestspruit in the Thembisile Hani Local Municipality, Nkangala District near Kwamhlanga, Mpumalanga Province. Bloemfontein.
- Butler, E. 2017. Palaeontological Impact Assessment of the proposed upgrade of the Sandriver Canal and Klippan Pump station in Welkom, Free State Province. Bloemfontein.
- Butler, E. 2017. Palaeontological Impact Assessment of the proposed upgrade of the 132kv and 11kv power line into a dual circuit above ground power line feeding into the Urania substation in Welkom, Free State Province. Bloemfontein.
- Butler, E. 2017. Palaeontological Desktop Assessment of the proposed Swaziland-Mozambique border patrol road and Mozambique barrier structure. Bloemfontein.
- Butler, E. 2017. Palaeontological Impact Assessment of the proposed diamonds alluvial & diamonds general prospecting right application near Christiana on the remaining extent of portion 1 of the farm Kaffraria 314, registration division HO, North West Province. Bloemfontein.
- Butler, E. 2017. Palaeontological Desktop Assessment for the proposed development of Wastewater Treatment Works on Hartebeesfontein, near Panbult, Mpumalanga. Bloemfontein.



- Butler, E. 2017. Palaeontological Desktop Assessment for the proposed development of Wastewater Treatment Works on Rustplaas near Piet Retief, Mpumalanga. Bloemfontein.
- Butler, E. 2018. Palaeontological Impact Assessment for the Proposed Landfill Site in Luckhoff, Letsemeng Local Municipality, Xhariep District, Free State. Bloemfontein.
- Butler, E. 2018. Palaeontological Impact Assessment of the proposed development of the new Mutsho coal-fired power plant and associated infrastructure near Makhado, Limpopo Province. Bloemfontein.
- Butler, E. 2018. Palaeontological Impact Assessment of the authorisation and amendment processes for Manangu mine near Delmas, Victor Khanye local municipality, Mpumalanga. Bloemfontein.
- Butler, E. 2018. Palaeontological Desktop Assessment for the proposed Mashishing township establishment in Mashishing (Lydenburg), Mpumalanga Province. Bloemfontein.
- Butler, E. 2018. Palaeontological Desktop Assessment for the Proposed Mlonzi Estate Development near Lusikisiki, Ngquza Hill Local Municipality, Eastern Cape. Bloemfontein.
- Butler, E. 2018. Palaeontological Phase 1 Assessment of the proposed Swaziland-Mozambique border patrol road and Mozambique barrier structure. Bloemfontein.
- Butler, E. 2018. Palaeontological Desktop Assessment for the proposed electricity expansion project and Sekgame Switching Station at the Sishen Mine, Northern Cape Province. Bloemfontein.
- Butler, E. 2018. Palaeontological field assessment of the proposed construction of the Zonnebloem Switching Station (132/22kV) and two loop-in loop-out power lines (132kV) in the Mpumalanga Province. Bloemfontein.
- Butler, E. 2018. Palaeontological Field Assessment for the proposed re-alignment and de-commissioning of the Firham-Platrand 88kv Powerline, near Standerton, Lekwa Local Municipality, Mpumalanga province. Bloemfontein.
- Butler, E. 2018. Palaeontological Desktop Assessment of the proposed Villa Rosa development In the Buffalo City Metropolitan Municipality, East London. Bloemfontein.
- Butler, E. 2018. Palaeontological field Assessment of the proposed Villa Rosa development In the Buffalo City Metropolitan Municipality, East London. Bloemfontein.
- Butler, E. 2018. Palaeontological desktop assessment of the proposed Mookodi – Mahikeng 400kV line, North West Province. Bloemfontein.
- Butler, E. 2018. Palaeontological Desktop Assessment for the proposed Thornhill Housing Project, Ndlambe Municipality, Port Alfred, Eastern Cape Province. Bloemfontein.
- Butler, E. 2018. Palaeontological desktop assessment of the proposed housing development on portion 237 of farm Hartebeestpoort 328. Bloemfontein.
- Butler, E. 2018. Palaeontological desktop assessment of the proposed New Age Chicken layer facility located on holding 75 Endicott near Springs in Gauteng. Bloemfontein.
- Butler, E. 2018 Palaeontological Desktop Assessment for the development of the proposed Leslie 1 Mining Project near Leandra, Mpumalanga Province. Bloemfontein.
- Butler, E. 2018. Palaeontological field assessment of the proposed development of the Wildealskloof mixed use development near Bloemfontein, Free State Province. Bloemfontein.
- Butler, E. 2018. Palaeontological Field Assessment of the proposed Megamor Extension, East London. Bloemfontein
- Butler, E. 2018. Palaeontological Impact Assessment of the proposed diamonds Alluvial & Diamonds General Prospecting Right Application near Christiana on the Remaining Extent of Portion 1 of the Farm Kaffraria 314, Registration Division HO, North West Province. Bloemfontein.
- Butler, E. 2018. Palaeontological Impact Assessment of the proposed construction of a new 11kV (1.3km) Power Line to supply electricity to a cell tower on farm 215 near Delportshoop in the Northern Cape. Bloemfontein.
- Butler, E. 2018. Palaeontological Field Assessment of the proposed construction of a new 22 kV single wood pole structure power line to the proposed MTN tower, near Britstown, Northern Cape Province. Bloemfontein.
- Butler, E. 2018. Palaeontological Exemption Letter for the proposed reclamation and reprocessing of the City Deep Dumps in Johannesburg, Gauteng Province. Bloemfontein.
- Butler, E. 2018. Palaeontological Exemption letter for the proposed reclamation and reprocessing of the City Deep Dumps and Rooikraal Tailings Facility in Johannesburg, Gauteng Province. Bloemfontein.



- Butler, E. 2018. Proposed Kalabasfontein Mine Extension project, near Bethal, Govan Mbeki District Municipality, Mpumalanga. Bloemfontein.
- Butler, E. 2018. Palaeontological Desktop Assessment for the development of the proposed Leslie 1 Mining Project near Leandra, Mpumalanga Province. Bloemfontein.
- Butler, E. 2018. Palaeontological Desktop Assessment of the proposed Mookodi – Mahikeng 400kV Line, North West Province. Bloemfontein.
- Butler, E. 2018. Environmental Impact Assessment (EIA) for the Proposed 325mw Rondekop Wind Energy Facility between Matjiesfontein and Sutherland in the Northern Cape Province.
- Butler, E. 2018. Palaeontological Impact Assessment of the proposed construction of the Tooverberg Wind Energy Facility, and associated grid connection near Touws River in the Western Cape Province. Bloemfontein.
- Butler, E. 2018. Palaeontological impact assessment of the proposed Kalabasfontein Mining Right Application, near Bethal, Mpumalanga.
- Butler, E., 2019. Palaeontological Desktop Assessment of the proposed Westrand Strengthening Project Phase II.
- Butler, E., 2019. Palaeontological Field Assessment for the proposed Sirius 3 Photovoltaic Solar Energy Facility near Upington, Northern Cape Province
- Butler, E., 2019. Palaeontological Field Assessment for the proposed Sirius 4 Photovoltaic Solar Energy Facility near Upington, Northern Cape Province
- Butler, E., 2019. Palaeontological Field Assessment for Heuningspruit PV 1 Solar Energy Facility near Koppies, Ngwathe Local Municipality, Free State Province.
- Butler, E., 2019. Palaeontological Field Assessment for the Moeding Solar Grid Connection, North West Province.
- Butler, E., 2019. Recommended Exemption from further Palaeontological studies for the Proposed Agricultural Development on Farms 1763, 2372 And 2363, Kakamas South Settlement, Kai! Garib Municipality, Mgcawu District Municipality, Northern Cape Province.
- Butler, E., 2019. Recommended Exemption from further Palaeontological studies: of Proposed Agricultural Development, Plot 1178, Kakamas South Settlement, Kai! Garib Municipality
- Butler, E., 2019. Palaeontological Desktop Assessment for the Proposed Waste Rock Dump Project at Tshipi Borwa Mine, near Hotazel, Northern Cape Province:
- Butler, E., 2019. Palaeontological Exemption Letter for the proposed DMS Upgrade Project at the Sishen Mine, Gamagara Local Municipality, Northern Cape Province
- Butler, E., 2019. Palaeontological Desktop Assessment of the proposed Integrated Environmental Authorisation process for the proposed Der Brochen Amendment project, near Groblershoop, Limpopo
- Butler, E., 2019. Palaeontological Desktop Assessment of the proposed updated Environmental Management Programme (EMPr) for the Assmang (Pty) Ltd Black Rock Mining Operations, Hotazel, Northern Cape
- Butler, E., 2019. Palaeontological Desktop Assessment of the proposed Kriel Power Station Lime Plant Upgrade, Mpumalanga Province
- Butler, E., 2019. Palaeontological Impact Assessment for the proposed Kangala Extension Project Near Delmas, Mpumalanga Province.
- Butler, E., 2019. Palaeontological Desktop Assessment for the proposed construction of an iron/steel smelter at the Botshabelo Industrial area within the Mangaung Metropolitan Municipality, Free State Province.
- Butler, E., 2019. Recommended Exemption from further Palaeontological studies for the proposed agricultural development on farms 1763, 2372 and 2363, Kakamas South settlement, Kai! Garib Municipality, Mgcawu District Municipality, Northern Cape Province.
- Butler, E., 2019. Recommended Exemption from further Palaeontological Studies for Proposed formalisation of Gamakor and Noodkamp low-cost Housing Development, Keimoes, Gordon Rd, Kai !Garib Local Municipality, ZF Mgcawu District Municipality, Northern Cape Province.
- Butler, E., 2019. Recommended Exemption from further Palaeontological Studies for proposed formalisation of Blaauwskop Low-Cost Housing Development, Kenhardt Road, Kai !Garib Local Municipality, ZF Mgcawu District Municipality, Northern Cape Province.



- Butler, E., 2019. Palaeontological Desktop Assessment of the proposed mining permit application for the removal of diamonds alluvial and diamonds kimberlite near Windsorton on a certain portion of Farm Zoelen's Laagte 158, Registration Division: Barkly Wes, Northern Cape Province.
- Butler, E., 2019. Palaeontological Desktop Assessment of the proposed Vedanta Housing Development, Pella Mission 39, Khâi-Ma Local Municipality, Namakwa District Municipality, Northern Cape.
- Butler, E., 2019. Palaeontological Desktop Assessment for The Proposed 920 KWP Groenheuwel Solar Plant Near Augrabies, Northern Cape Province
- Butler, E., 2019. Palaeontological Desktop Assessment for the establishment of a Super Fines Storage Facility at Amandelbult Mine, Near Thabazimbi, Limpopo Province
- Butler, E., 2019. Palaeontological Impact Assessment for the proposed Sace Lifex Project, Near Emalahleni, Mpumalanga Province
- Butler, E., 2019. Palaeontological Desktop Assessment for the proposed Rehau Fort Jackson Warehouse Extension, East London
- Butler, E., 2019. Palaeontological Desktop Assessment for the proposed Environmental Authorisation Amendment for moving 3 Km of the Merensky-Kameni 132KV Powerline
- Butler, E., 2019. Palaeontological Impact Assessment for the proposed Umsobomvu Solar PV Energy Facilities, Northern and Eastern Cape
- Butler, E., 2019. Palaeontological Desktop Assessment for six proposed Black Mountain Mining Prospecting Right Applications, without Bulk Sampling, in the Northern Cape.
- Butler, E., 2019. Palaeontological field Assessment of the Filling Station (Rietvlei Extension 6) on the Remaining Portion of Portion 1 of the Farm Witkoppies 393JR east of the Rietvleidam Nature Reserve, City of Tshwane, Gauteng
- Butler, E., 2019. Palaeontological Desktop Assessment of The Proposed Upgrade of The Vaal Gamagara Regional Water Supply Scheme: Phase 2 And Groundwater Abstraction
- Butler, E., 2019. Palaeontological Desktop Assessment of The Expansion of The Jan Kempdorp Cemetery on Portion 43 Of Farm Guldenskat 36-Hn, Northern Cape Province
- Butler, E., 2019. Palaeontological Desktop Assessment of the Proposed Residential Development on Portion 42 Of Farm Geldunskat No 36 In Jan Kempdorp, Phokwane Local Municipality, Northern Cape Province
- Butler, E., 2019. Palaeontological Impact Assessment of the proposed new Township Development, Lethabo Park, on Remainder of Farm Roodepan No 70, Erf 17725 And Erf 15089, Roodepan Kimberley, Sol Plaatjies Local Municipality, Frances Baard District Municipality, Northern Cape
- Butler, E., 2019. Palaeontological Protocol for Finds for the proposed 16m WH Battery Storage System in Steinkopf, Northern Cape Province
- Butler, E., 2019. Palaeontological Exemption Letter of the proposed 4.5WH Battery Storage System near Midway-Pofadder, Northern Cape Province
- Butler, E., 2019. Palaeontological Exemption Letter of the proposed 2.5ml Process Water Reservoir at Gloria Mine, Black Rock, Hotazel, Northern Cape
- Butler, E., 2019. Palaeontological Desktop Assessment for the Establishment of a Super Fines Storage Facility at Gloria Mine, Black Rock Mine Operations, Hotazel, Northern Cape:
- Butler, E., 2019. Palaeontological Desktop Assessment for the Proposed New Railway Bridge, and Rail Line Between Hotazel and the Gloria Mine, Northern Cape Province
- Butler, E., 2019. Palaeontological Exemption Letter of The Proposed Mixed Use Commercial Development on Portion 17 of Farm Boegoeberg Settlement Number 48, !Kheis Local Municipality in The Northern Cape Province. Banzai Environmental (Pty) Ltd, Bloemfontein.
- Butler, E., 2019. Palaeontological Desktop Assessment of the Proposed Diamond Mining Permit Application Near Kimberley, Sol Plaatjies Municipality, Northern Cape Province. Banzai Environmental (Pty) Ltd, Bloemfontein.
- Butler, E., 2019. Palaeontological Desktop Assessment of the Proposed Diamonds (Alluvial, General & In Kimberlite) Prospecting Right Application near Postmasburg, Registration Division; Hay, Northern Cape Province. Banzai Environmental (Pty) Ltd, Bloemfontein.
- Butler, E., 2019. Palaeontological Desktop Assessment of the proposed diamonds (alluvial, general & in kimberlite) prospecting right application near Kimberley, Northern Cape Province. Banzai Environmental (Pty) Ltd, Bloemfontein.



- Butler, E., 2019. Palaeontological Phase 1 Impact Assessment of the proposed upgrade of the Vaal Gamagara regional water supply scheme: Phase 2 and groundwater abstraction. Banzai Environmental (Pty) Ltd, Bloemfontein.
- Butler, E., 2019. Palaeontological Desktop Assessment of the proposed seepage interception drains at Duvha Power Station, Emalahleni Municipality, Mpumalanga Province. Banzai Environmental (Pty) Ltd, Bloemfontein.
- Butler, E., 2019. Palaeontological Desktop Assessment letter for the Proposed PV Solar Facility at the Heineken Sedibeng Brewery, near Vereeniging, Gauteng. Banzai Environmental (Pty) Ltd, Bloemfontein.
- Butler, E., 2019. Palaeontological Phase 1 Assessment for the Proposed PV Solar Facility at the Heineken Sedibeng Brewery, near Vereeniging, Gauteng. Banzai Environmental (Pty) Ltd, Bloemfontein.
- Butler, E., 2019. Palaeontological field Assessment for the Proposed Upgrade of the Kolomela Mining Operations, Tsantsabane Local Municipality, Siyanda District Municipality, Northern Cape Province, Northern Cape. Banzai Environmental (Pty) Ltd, Bloemfontein.
- Butler, E., 2019. Palaeontological Desktop Assessment of the proposed feldspar prospecting rights and mining application on portion 4 and 5 of the farm Rozynen 104, Kakamas South, Kai! Garib Municipality, Zf Mgcawu District Municipality, Northern Cape. Banzai Environmental (Pty) Ltd, Bloemfontein.
- Butler, E., 2019. Palaeontological Phase 1 Field Assessment of the proposed Summerpride Residential Development and Associated Infrastructure on Erf 107, Buffalo City Municipality, East London. Banzai Environmental (Pty) Ltd, Bloemfontein.
- Butler, E., 2019. Palaeontological Desktop Impact Assessment for the proposed re-commission of the Old Balgay Colliery near Dundee, KwaZulu Natal.
- Butler, E., 2019. Palaeontological Phase 1 Impact Assessment for the Proposed Re-Commission of the Old Balgay Colliery near Dundee, KwaZulu Natal. Banzai Environmental (Pty) Ltd, Bloemfontein.
- Butler, E., 2019. Palaeontological Desktop Assessment for the Proposed Environmental Authorisation and Amendment Processes for Elandsfontein Colliery. Banzai Environmental (Pty) Ltd, Bloemfontein.
- Butler, E., 2019. Palaeontological Impact Assessment and Protocol for Finds of a Proposed New Quarry on Portion 9 (of 6) of the farm Mimosa Glen 885, Bloemfontein, Free State Province. Banzai Environmental (Pty) Ltd, Bloemfontein.
- Butler, E., 2019. Palaeontological Impact Assessment and Protocol for Finds of a proposed development on Portion 9 and 10 of the Farm Mimosa Glen 885, Bloemfontein, Free State Province. Banzai Environmental (Pty) Ltd, Bloemfontein.
- Butler, E., 2019. Palaeontological Exemption Letter for the proposed residential development on the Remainder of Portion 1 of the Farm Strathearn 2154 in the Magisterial District of Bloemfontein, Free State. Banzai Environmental (Pty) Ltd, Bloemfontein.
- Butler, E., 2019. Palaeontological Field Assessment for the Proposed Nigel Gas Transmission Pipeline Project in the Nigel Area of the Ekurhuleni Metropolitan Municipality, Gauteng Province. Banzai Environmental (Pty) Ltd, Bloemfontein.
- Butler, E., 2019. Palaeontological Desktop Assessment for five Proposed Black Mountain Mining Prospecting Right Applications, Without Bulk Sampling, in the Northern Cape. Banzai Environmental (Pty) Ltd, Bloemfontein.
- Butler, E. 2019. Palaeontological Desktop Assessment for the Proposed Environmental Authorisation and an Integrated Water Use Licence Application for the Reclamation of the Marievale Tailings Storage Facilities, Ekurhuleni Metropolitan Municipality - Gauteng Province. Banzai Environmental (Pty) Ltd, Bloemfontein.
- Butler, E., 2019. Palaeontological Impact Assessment for the Proposed Sace Lifex Project, near Emalahleni, Mpumalanga Province. Banzai Environmental (Pty) Ltd, Bloemfontein.
- Butler, E., 2019. Palaeontological Desktop Assessment for the proposed Golfview Colliery near Ermelo, Msukaligwa Local Municipality, Mpumalanga Province
- Butler, E., 2019. Palaeontological Desktop Assessment for the Proposed Kangra Maquasa Block C Mining development near Piet Retief, in the Mkhondo Local Municipality within the Gert Sibande District Municipality. Banzai Environmental (Pty) Ltd, Bloemfontein.



- Butler, E., 2019. Palaeontological Desktop Assessment for the Proposed Amendment of the Kusipongo Underground and Opencast Coal Mine in Support of an Environmental Authorization and Waste Management License Application. Banzai Environmental (Pty) Ltd, Bloemfontein.
- Butler, E., 2019. Palaeontological Exemption Letter of the Proposed Mamatwan Mine Section 24g Rectification Application, near Hotazel, Northern Cape Province. Banzai Environmental (Pty) Ltd, Bloemfontein.
- Butler, E., 2020. Palaeontological Field Assessment for the Proposed Environmental Authorisation and Amendment Processes for Elandsfontein Colliery. Banzai Environmental (Pty) Ltd, Bloemfontein.
- Butler, E., 2020. Palaeontological Desktop Assessment for the Proposed Extension of the South African Nuclear Energy Corporation (Necsa) Pipe Storage Facility, Madibeng Local Municipality, North West Province. Banzai Environmental (Pty) Ltd, Bloemfontein.
- Butler, E., 2020. Palaeontological Field Assessment for the Proposed Piggery on Portion 46 of the Farm Brakkefontien 416, Within the Nelson Mandela Bay Municipality, Eastern Cape. Banzai Environmental (Pty) Ltd, Bloemfontein.
- Butler, E., 2020. Palaeontological field Assessment for the proposed Rietfontein Housing Project as part of the Rapid Land Release Programme, Gauteng Province Department of Human Settlements, City of Johannesburg Metropolitan Municipality. Banzai Environmental (Pty) Ltd, Bloemfontein.
- Butler, E., 2020. Palaeontological Desktop Assessment for the Proposed Choje Wind Farm between Grahamstown and Somerset East, Eastern Cape. Banzai Environmental (Pty) Ltd, Bloemfontein.
- Butler, E., 2020. Palaeontological Desktop Assessment of the Proposed Prospecting Right Application for the Prospecting of Diamonds (Alluvial, General & In Kimberlite), Combined with A Waste License Application, Registration Division: Gordonia and Kenhardt, Northern Cape Province. Banzai Environmental (Pty) Ltd, Bloemfontein.
- Butler, E., 2020. Palaeontological Impact Assessment for the Proposed Clayville Truck Yard, Ablution Blocks and Wash Bay to be Situated on Portion 55 And 56 Of Erf 1015, Clayville X11, Ekurhuleni Metropolitan Municipality, Gauteng Province. Banzai Environmental (Pty) Ltd, Bloemfontein.
- Butler, E., 2020. Palaeontological Desktop Assessment for the Proposed Hartebeesthoek Residential Development. Banzai Environmental (Pty) Ltd, Bloemfontein.
- Butler, E., 2020. Palaeontological Desktop Assessment for the Proposed Mooiplaats Educational Facility, Gauteng Province. Banzai Environmental (Pty) Ltd, Bloemfontein.
- Butler, E., 2020. Palaeontological Impact Assessment for the Proposed Monument Park Student Housing Establishment. Banzai Environmental (Pty) Ltd, Bloemfontein.
- Butler, E., 2020. Palaeontological Field Assessment for the Proposed Standerton X10 Residential and Mixed-Use Developments, Lekwa Local Municipality Standerton, Mpumalanga Province. Banzai Environmental (Pty) Ltd, Bloemfontein.
- Butler, E., 2020. Palaeontological Field Assessment for the Rezoning and Subdivision of Portion 6 Of Farm 743, East London. Banzai Environmental (Pty) Ltd, Bloemfontein. Banzai Environmental (Pty) Ltd, Bloemfontein.
- Butler, E., 2020. Palaeontological Field Assessment for the Proposed Matla Power Station Reverse Osmosis Plant, Mpumalanga Province. Banzai Environmental (Pty) Ltd, Bloemfontein.
- Butler, E., 2020. Palaeontological Desktop Assessment of the Proposed Prospecting Right Application Without Bulk Sampling for the Prospecting of Diamonds Alluvial near Bloemhof on Portion 3 (Portion 1) of the Farm Boschpan 339, the Remaining Extent of Portion 8 (Portion 1), Portion 9 (Portion 1) and Portion 10 (Portion 1) and Portion 17 (Portion 1) of the Farm Panfontein 270, Registration Division: Ho, North West Province. Banzai Environmental (Pty) Ltd, Bloemfontein.
- Butler, E., 2020. Palaeontological Desktop Assessment of the Proposed Prospecting Right Application Combined with a Waste Licence Application for the Prospecting of Diamonds Alluvial, Diamonds General and Diamonds near Wolmaransstad on the Remaining Extent, Portion 7 and Portion 8 Of Farm Rooibult 152, Registration Division: HO, North West Province. Banzai Environmental (Pty) Ltd, Bloemfontein.
- Butler, E., 2020. Palaeontological Desktop Assessment of the Proposed Prospecting Right Application With Bulk Sampling combined with a Waste Licence Application for the Prospecting of Diamonds Alluvial (Da), Diamonds General (D), Diamonds (Dia) and Diamonds In Kimberlite (Dk) near Prieska On Portion 7, a certain Portion of the Remaining Extent of Portion 9 (Wouter), Portion 11 (De Hoek), Portion 14 (Stofdraai) (Portion of Portion 4), the Remaining Extent of Portion 16 (Portion Of Portion 9)





(Wouter) and the Remaining Extent of Portion 18 (Portion of Portion 10) of the Farm Lanyon Vale 376, Registration Division: Hay, Northern Cape. Banzai Environmental (Pty) Ltd, Bloemfontein.

Butler, E., 2020. Palaeontological Desktop Assessment of the Proposed Prospecting Right Area and Mining Permit Area near Ritchie on the Remaining Extent of Portion 3 (Anna's Hoop) of the Farm Zandheuvell 144, Registration Division: Kimberley, Northern Cape Province. Banzai Environmental (Pty) Ltd, Bloemfontein.

Butler, E., 2020. Palaeontological Desktop Assessment of the Proposed Okapi Diamonds (Pty) Ltd Mining Right of Diamonds Alluvial (Da) & Diamonds General (D) Combined with a Waste Licence Application on the Remaining Extent of Portion 9 (Wouter) of the Farm Lanyon Vale 376; Registration Division: Hay; Northern Cape Province. Banzai Environmental (Pty) Ltd, Bloemfontein.

Butler, E., 2020. Palaeontological Field Assessment of the Proposed Prospecting Right Application for the Prospecting of Diamonds (Alluvial & General) between Douglas and Prieska on Portion 12, Remaining Extent of Portion 29 (Portion of Portion 13) and Portion 31 (Portion of Portion 29) on the Farm Reads Drift 74, Registration Division; Herbert, Northern Cape Province. Banzai Environmental (Pty) Ltd, Bloemfontein.

Butler, E., 2020. Palaeontological Desktop Assessment for the Proposed Mining Permit Application Combined with a Waste License Application for the Mining of Diamonds (Alluvial) Near Schweitzer-Reneke on a certain Portion of Portion 12 (Ptn of Ptn 7) of the Farm Doornhoek 165, Registration Division: HO, North West Province. Banzai Environmental (Pty) Ltd, Bloemfontein.

Butler, E., 2020. Palaeontological Desktop Assessment for Black Mountain Koa South Prospecting Right Application, Without Bulk Sampling, in the Northern Cape. Banzai Environmental (Pty) Ltd, Bloemfontein.

Butler, E., 2020. Palaeontological Impact Assessment of the Proposed AA Bakery Expansion, Sedibeng District Municipality, Gauteng. Banzai Environmental (Pty) Ltd, Bloemfontein.

Butler, E., 2020. Palaeontological Desktop Assessment for the Proposed Boegoeberg Township Expansion, !Kheis Local Municipality, ZF Mgcawu District Municipality, Northern Cape Province. Banzai Environmental (Pty) Ltd, Bloemfontein.

Butler, E., 2020. Palaeontological Desktop Assessment for the Proposed Gariiep Township Expansion, !Kheis Local Municipality, ZF Mgcawu District Municipality, Northern Cape Province. Banzai Environmental (Pty) Ltd, Bloemfontein.

Butler, E., 2020. Palaeontological Desktop Assessment for the Proposed Groblershoop Township Expansion, !Kheis Local Municipality, Zf Mgcawu District Municipality, Northern Cape Province. Banzai Environmental (Pty) Ltd, Bloemfontein.

Butler, E., 2020. Palaeontological Desktop Assessment for the Proposed Grootdrink Township Expansion, !Kheis Local Municipality, ZF Mgcawu District Municipality, Northern Cape Province. Banzai Environmental (Pty) Ltd, Bloemfontein.

Butler, E., 2020. Palaeontological Exemption Letter for the Proposed Opwag Township Expansion, !Kheis Local Municipality, ZF Mgcawu District Municipality, Northern Cape Province. Banzai Environmental (Pty) Ltd, Bloemfontein.

Butler, E., 2020. Palaeontological Exemption Letter for the Proposed Topline Township Expansion, !Kheis Local Municipality, ZF Mgcawu District Municipality, Northern Cape Province. Banzai Environmental (Pty) Ltd, Bloemfontein.

Butler, E., 2020. Palaeontological Desktop Assessment for the Proposed Wegdraai Township Expansion, !Kheis Local Municipality, Zf Mgcawu District Municipality, Northern Cape Province. Banzai Environmental (Pty) Ltd, Bloemfontein.

Butler, E., 2020. Palaeontological field Assessment for the Proposed Establishment of an Emulsion Plant on Erf 1559, Hardustria, Harrismith, Free State. Banzai Environmental (Pty) Ltd, Bloemfontein.

Butler, 2020. Part 2 Environmental Authorisation (EA) Amendment Process for the Kudusberg Wind Energy Facility (WEF) near Sutherland, Western and Northern Cape Provinces- Palaeontological Impact Assessment. Banzai Environmental (Pty) Ltd, Bloemfontein.

Butler, E., 2020. Palaeontological Desktop Assessment Proposed for the Construction and Operation of the Battery Energy Storage System (BESS) and Associated Infrastructure and inclusion of Additional Listed Activities for the Authorised Droogfontein 3 Solar Photovoltaic (PV) Energy Facility Located near Kimberley in the Sol Plaatje Local Municipality, Francis Baard District Municipality, in the Northern Cape Province of South Africa. Banzai Environmental (Pty) Ltd, Bloemfontein.



- Butler, E., 2020. Palaeontological Impact Assessment for the Proposed Development of a Cluster of Renewable Energy Facilities between Somerset East and Grahamstown in the Eastern Cape. Banzai Environmental (Pty) Ltd, Bloemfontein.
- Butler, E., 2021. Palaeontological Desktop Assessment for the Proposed Amaoti Secondary School, Pinetown, eThekweni Metropolitan Municipality KwaZulu Natal. Banzai Environmental (Pty) Ltd, Bloemfontein.
- Butler, E., 2021. Palaeontological Impact Assessment for the Proposed an Inland Diesel Depot, Transportation Pipeline and Associated Infrastructure on Portion 5 of the Farm Franshoek No. 1861, Swinburne, Free State Province. Banzai Environmental (Pty) Ltd, Bloemfontein.
- Butler, E., 2021. Palaeontological Impact Assessment for the proposed erosion control gabion installation at Alpine Heath Resort on the farm Akkerman No 5679 in the Bergville district Kwazulu-Natal. Banzai Environmental (Pty) Ltd, Bloemfontein.
- Butler, E., 2021. Palaeontological Impact Assessment for the proposed Doornkloof Residential development on portion 712 of the farm Doornkloof 391 Jr, City of Tshwane Metropolitan Municipality in Gauteng, South Africa. Banzai Environmental (Pty) Ltd, Bloemfontein.
- Butler, E., 2021. Palaeontological Desktop Assessment for the Proposed Expansion of the Square *Kilometre* Array (SKA) Meerkat Project, on the Farms Mey's Dam RE/68, Brak Puts RE /66, Swartfontein RE /496 & Swartfontein 2/496, in the Kareeberg Local Municipality, Pixley Ka Seme District Municipality, and the Farms Los Berg 1/73 & Groot Paardekloof RE /74, in the Karoo Hoogland Local Municipality, Namakwa District Municipality, Northern Cape Province. Banzai Environmental (Pty) Ltd, Bloemfontein.
- Butler, E., 2021. Palaeontological Desktop Assessment for De Beers Consolidated Mines: Proposed Drilling on Portion 6 of Scholtzfontein 165 and Farm Arnotsdale 175, Herbert District in the Northern Cape. Banzai Environmental (Pty) Ltd, Bloemfontein.
- Butler, E., 2021. Palaeontological Desktop Assessment for De Beers Consolidated Mines: Proposed Drilling on the Remaining Extent of Biessie Laagte 96, and Portion 2 and 6 of Aasvogel Pan 141, Near Hopetown in the Northern Cape. Banzai Environmental (Pty) Ltd, Bloemfontein.
- Butler, E., 2021. Palaeontological Desktop Assessment for De Beers Consolidated Mines: Proposed Drilling in the North West Province: on Portions 7 (RE) (of Portion 3), 11, 12 (of Portion 3), 34 (of Portion 30), 35 (of Portion 7) of the Farm Holfontein 147 IO and Portions 1, 2 and the RE) of the Farm Kareeboschbult 76 Ip and Portions 1, 2, 4, 5, 6, (of Portion 3), 7 (of Portion 3), 13, 14, and the Re of the farm Oppaslaagte 100IP and portions 25 (of Portion 24) and 30 of the farm Slypsteen 102 IP. Banzai Environmental (Pty) Ltd, Bloemfontein.
- Butler, E., 2021. Palaeontological Desktop Assessment for the Proposed Expansion of the Cavalier Abattoir on farm Oog Van Boekenhoutskloof of Tweefontein 288 JR, near Cullinan, City of Tshwane Metropolitan Municipality, Gauteng. Banzai Environmental (Pty) Ltd, Bloemfontein.
- Butler, E., 2021. Palaeontological Impact Assessment for the Proposed Doornkloof Residential Development on Portion 712 of the Farm Doornkloof 391 JR, City of Tshwane Metropolitan Municipality in Gauteng, South Africa. Banzai Environmental (Pty) Ltd, Bloemfontein.
- Butler, E., 2021. Palaeontological Desktop Assessment for the proposed High Density Social Housing Development on part of the Remainder of Portion 171 and part of Portion 306 of the farm Derdepoort 326 JR, City of Tshwane. Banzai Environmental (Pty) Ltd, Bloemfontein.
- Butler, E., 2021. Palaeontological Desktop Assessment for the proposed Red Rock Mountain Farm activities on Portions 2, 3 and 11 of the Farm Buffelskloof 22, near Calitzdorp in the Western Cape. Banzai Environmental (Pty) Ltd, Bloemfontein.
- Butler, E., 2021. Palaeontological Desktop Assessment for the proposed Mixed-use Development on a Part of Remainder of Portion 171 and Portion 306 of the farm Derdepoort 326 JR, City of Tshwane. Banzai Environmental (Pty) Ltd, Bloemfontein.
- Butler, E., 2021. Palaeontological Impact Assessment for the Proposed Realignment of the D 2809 Provincial Road as well as the Mining Right Application for the Glisa and Paardeplaats Sections of the NBC Colliery (NBC) near Belfast (eMakhazeni), eMakhazeni Local Municipality, Nkangala District Municipality, Mpumalanga Province. Banzai Environmental (Pty) Ltd, Bloemfontein.
- Butler, E., 2021. Palaeontological Desktop Assessment for the proposed construction of Whittlesea Cemetery within Enoch Mjijima Local Municipality area, Eastern Cape. Banzai Environmental (Pty) Ltd, Bloemfontein.



- Butler, E., 2021. Palaeontological Impact Assessment for the establishment of a mixed-use development on Portion 0 the of Erf 700, Despatch, Nelson Mandela Bay Municipality, Eastern Cape. Banzai Environmental (Pty) Ltd, Bloemfontein.
- Butler, E., 2021. Palaeontological Desktop Assessment for the proposed East Orchards Poultry Farm, Delmas/Botleng Transitional Local Council, Mpumalanga. Banzai Environmental (Pty) Ltd, Bloemfontein.
- Butler, E., 2021. Palaeontological Impact Assessment for the proposed East Orchards Poultry Farm, Delmas/Botleng Transitional Local Council, Mpumalanga. Banzai Environmental (Pty) Ltd, Bloemfontein.
- Butler, E., 2021. Palaeontological Desktop Assessment to assess the proposed Gariep Road upgrade near Groblershoop, Northern Cape Province. Banzai Environmental (Pty) Ltd, Bloemfontein.
- Butler, E., 2021. Palaeontological Impact Assessment for the Ngwedi Solar Plant which forms part of the authorised Paleso Solar Powerplant near Viljoenskroon in the Free State. Banzai Environmental (Pty) Ltd, Bloemfontein.
- Butler, E., 2021. Palaeontological Impact Assessment for the Noko Solar Power Plant and power line which forms part of the authorised Paleso Solar Powerplant near Orkney in the North West. Banzai Environmental (Pty) Ltd, Bloemfontein.
- Butler, E., 2021. Palaeontological Impact Assessment for the Proposed Power Line as part of the Paleso Solar Power Plant near Viljoenskroon in the Free State. Banzai Environmental (Pty) Ltd, Bloemfontein.
- Butler, E., 2021. Palaeontological Impact Assessment for the Thakadu Solar Plant which forms part of the authorised Paleso Solar Powerplant near Viljoenskroon in the Free State. Banzai Environmental (Pty) Ltd, Bloemfontein.
- Butler, E., 2020. Palaeontological Desktop Assessment for the proposed Farming Expansions on Portions 50 of the Farm Rooipoort 555 JR, Portion 34 of the Farm Rooipoort 555 JR, Portions 20 and 49 of the Farm Rooipoort 555 JR and Portion 0(RE) of the Farm Oudou Boerdery 626 JR, Tshwane Metropolitan Municipality, Gauteng Province. Banzai Environmental (Pty) Ltd, Bloemfontein.
- Butler, E., 2020. Palaeontological Desktop Assessment for the proposed Saselamani CBD on the Remainder of Tshikundu's Location 262 MT, and the Remainder of Portion 1 of Tshikundu's Location 262 MT, Collins Chabane Local Municipality, Limpopo Province. Banzai Environmental (Pty) Ltd, Bloemfontein.
- Butler, E., 2021. Palaeontological Impact Assessment for the proposed expansions of the existing Molare Piggery infrastructure and related activities on Portion 0(Re) of the farm Arendsfontein 464 JS, Portion 0(Re) of the farm Wanhoop 443 JS, Portion 0(Re) of the farm Eikeboom 476 JS and Portions 2 & 7 of the farm Klipbank 467 JS within the jurisdiction of the Steve Tshwete Local Municipality, Mpumalanga Province. Banzai Environmental (Pty) Ltd, Bloemfontein.
- Butler, E., 2021. Palaeontological Desktop Assessment for the proposed Nchwaning Rail Balloon Turn Outs at Black Rock Mine Operations (BRMO) near Hotazel in the John Taolo Gaetsewe District Municipality in the Northern Cape. Banzai Environmental (Pty) Ltd, Bloemfontein.
- Butler, E., 2021. Palaeontological Desktop Assessment for the proposed Black Rock Mining Operations (BRMO) new rail loop and stacker reclaimers Project at Gloria Mine near Hotazel in the Northern Cape. Banzai Environmental (Pty) Ltd, Bloemfontein.
- Butler, E., 2020. Palaeontological Desktop Assessment for the proposed Nchwaning Rail Balloon Turn Outs at Black Rock Mine Operations (BRMO) near Hotazel in the John Taolo Gaetsewe District Municipality in the Northern Cape.
- Butler, E., 2021. Palaeontological Impact Assessment for the proposed utilization of one Borrow Pit for the planned Clarkebury DR08034 Road Upgrade, Engcobo Local Municipality, Eastern Cape. Banzai Environmental (Pty) Ltd, Bloemfontein.
- Butler, E., 2021. Palaeontological Desktop Assessment for the proposed Kappies Kareeboom Prospecting Project on Portion 1 and the Remainder of the farm Kappies Kareeboom 540, the Remainder of Farm 544, Portion 5 of farm 534 and Portion 1 of the farm Putsfontein 616, ZF Mgcawu District Municipality, Northern Cape Province. Banzai Environmental (Pty) Ltd, Bloemfontein.
- Butler, E., 2021. Palaeontological Desktop Assessment for the proposed Kameel Fontein Prospecting Project on the Remainder of the farm Kameel Fontein 490, a portion of the farm Strydfontein 614 and



the farm Soetfontein 606, ZF Mgcawu District Municipality, Northern Cape Province. Banzai Environmental (Pty) Ltd, Bloemfontein.

Butler, E., 2021. Palaeontological Desktop Assessment for the proposed Lewis Prospecting Project on Portions of the Farms Lewis 535, Spence 537, Wright 538, Symthe 566, Bredenkamp 567, Brooks 568, Beaumont 569 and Murray 570, John Taolo Gaetsewe District Municipality in the Northern Cape Province. Banzai Environmental (Pty) Ltd, Bloemfontein.

Butler, E., 2021. Palaeontological Desktop Assessment for the Construction of the Ganspan Pering 132kV Powerline, Phokwane Local Municipality, Frances Baard District Municipality in the Northern Cape. Banzai Environmental (Pty) Ltd, Bloemfontein.

Butler, E., 2021. Palaeontological Desktop Assessment for the Longlands Prospecting Project on a Portion of the farm Longlands 350, Frances Baard District Municipality, Northern Cape Province. Banzai Environmental (Pty) Ltd, Bloemfontein.

Butler, E., 2021. Palaeontological Impact Assessment for the proposed development of 177 new units in the northern section of Mpongo Park in the Eastern Cape. Banzai Environmental (Pty) Ltd, Bloemfontein.

Butler, E., 2021. Palaeontological Desktop Assessment for the proposed Qhumanco Irrigation Project, Chris Hani District Municipality Eastern Cape. Banzai Environmental (Pty) Ltd, Bloemfontein.

Butler, E., 2021. Palaeontological Desktop Assessment for the proposed Raphuti Settlement Project on Portions of the Farm Weikrans 539KQ in the Waterberg District Municipality of the Limpopo Province. Banzai Environmental (Pty) Ltd, Bloemfontein.

Butler, E., 2021. Palaeontological Impact Assessment for the Senqu Rural Project, Joe Gqabi District Municipality, Senqu Local Municipality, in the Eastern Cape Province. Banzai Environmental (Pty) Ltd, Bloemfontein.

Butler, E., 2021. Palaeontological Impact Assessment for the proposed new Township development on portion of the farm Klipfontein 716 and farm Ceres 626 in Bloemfontein, Mangaung Metropolitan Municipality, Free State. Banzai Environmental (Pty) Ltd, Bloemfontein.

Butler, E., 2021. Palaeontological Desktop Assessment for the ECDOT Borrow Pits and WULA near Sterkspruit, Joe Gqabi District Municipality in the Eastern Cape Province. Banzai Environmental (Pty) Ltd, Bloemfontein.

Butler, E., 2021. Palaeontological Desktop Assessment for the proposed SANRAL Stone Crescent Embankment Stabilisation Works along the N2 on the farm Zyfer Fonteyn 253 (Portion 0, 11 and 12RE) and Palmiet Rivier 305 (Portion 34, 36) near Grahamstown in the Eastern Cape. Banzai Environmental (Pty) Ltd, Bloemfontein.

Butler, E., 2021. Palaeontological Impact Assessment for the Klein Rooipoort Trust Citrus Development, in the Eastern Cape. Banzai Environmental (Pty) Ltd, Bloemfontein.

Butler, E., 2021. Palaeontological Impact Assessment for the proposed Victoria West water augmentation project in the Northern Cape. Banzai Environmental (Pty) Ltd, Bloemfontein.

Butler, E., 2021. Palaeontological Desktop Assessment for the proposed Campbell Sewer, Internal Reticulation, Outfall Sewer Line and Oxidation Ponds, located on ERF 1, Siyancuma Local Municipality in the Northern Cape. Banzai Environmental (Pty) Ltd, Bloemfontein.

Butler, E., 2021. Palaeontological Desktop Assessment for the proposed Development and Upgrades within the Great Fish River Nature Reserve, Eastern Cape Province. Banzai Environmental (Pty) Ltd, Bloemfontein.

Butler, E., 2021. Palaeontological Desktop Assessment for proposed Parsons Power Park a portion of Erf 1. within the Nelson Mandela Bay Municipality in the Eastern Cape. Banzai Environmental (Pty) Ltd, Bloemfontein.

Butler, E., 2021. Palaeontological Desktop Assessment for the proposed expansion of the farming operations on part of portions 7 and 8 of farm Boerboonkraal 353 in the Greater Tubatse Local Municipality of Sekhukhune District, Limpopo Province. Banzai Environmental (Pty) Ltd, Bloemfontein.

Butler, E., 2021. Palaeontological Desktop Assessment to assess the proposed low-level pedestrian bridge, in Heilbron, Free State. Banzai Environmental (Pty) Ltd, Bloemfontein.

Butler, E., 2021. Palaeontological Desktop Assessment to assess the proposed township developments in Hertzogville, Malebogo, in Heilbron, Free State. Banzai Environmental (Pty) Ltd, Bloemfontein.



- Butler, E., 2021. Palaeontological Impact Assessment for the proposed construction of Malangazana Bridge on Farm No.64 Nkwenkwana, Engcobo Local Municipality, Eastern Cape. Banzai Environmental (Pty) Ltd, Bloemfontein.
- Butler, E., 2021. Palaeontological Impact Assessment to assess the proposed Construction of Middelburg Integrated Transport Control Centre on Portion 14 of Farm 81 Division of Middelburg, Chris Hani District Municipality in the Eastern Cape. Banzai Environmental (Pty) Ltd, Bloemfontein.
- Butler, E., 2021. Palaeontological Desktop Assessment for the Witteberge Sand Mine on the remainder of farm Elandskrag Plaas 269 located in the Magisterial District of Laingsburg and Central Karoo District Municipality in the Western Cape. Banzai Environmental (Pty) Ltd, Bloemfontein.
- Butler, E., 2021. Palaeontological Impact Assessment (PIA) to assess the proposed Agrizone 2, Dube Trade Port in KwaZulu Natal Province. Banzai Environmental (Pty) Ltd, Bloemfontein.
- Butler, E., 2021. Palaeontological Desktop Assessment assessing the proposed Prospecting Right application without bulk sampling for the prospecting of Chrome ore and platinum group metals on the Remaining Extent of the farm Doornspruit 106, Registration Division: HO; North West Province. Banzai Environmental (Pty) Ltd, Bloemfontein.
- Butler, E., 2022. Palaeontological Desktop Assessment for the proposed Ennerdale Extension 2 Township Establishment on the Undeveloped Part of Portion 134 of the Farm Roodepoort 302IQ, City of Johannesburg Metropolitan Municipality, Gauteng Province. Banzai Environmental (Pty) Ltd, Bloemfontein.
- Butler, E., 2022. Palaeontological Desktop Assessment for the Construction of the Eskom Mesong 400kV Loop-In Loop-Out Project, Ekurhuleni Municipality, Gauteng Province. Banzai Environmental (Pty) Ltd, Bloemfontein.
- Butler, E., 2022. Palaeontological Desktop Assessment for the Proposed Vinci Prospecting Right Application on the Remainder of the Farm Vinci 580, ZF Mgcawu District Municipality, in the Northern Cape Province, Banzai Environmental (Pty) Ltd, Bloemfontein.
- Butler, E., 2022. Palaeontological Desktop Assessment for the proposed Farm 431 Mining Right Application (MRA), near Postmasburg, ZF Mgcawu District Municipality, in the Northern Cape Province. Banzai Environmental (Pty) Ltd, Bloemfontein.
- Butler, E., 2022. Palaeontological Impact Assessment for the Leeuw Braakfontein Colliery Expansion Project (LBC) in the Amajuba District Municipality, KwaZulu-Natal. Banzai Environmental (Pty) Ltd, Bloemfontein.
- Butler, E., 2022. Palaeontological Desktop Assessment for the proposed reclamation of the 5L23 TSF in Ekurhuleni, Gauteng Province. Banzai Environmental (Pty) Ltd, Bloemfontein.
- Butler, E., 2022. Palaeontological Desktop Assessment for the Proposed Mogalakwena Mine Infrastructure Expansion (near Mokopane in the Mogalakwena Local Municipality, Limpopo Province). Banzai Environmental (Pty) Ltd, Bloemfontein.
- Butler, E., 2022. Palaeontological Desktop Assessment for the proposed 10km Cuprum to Kronos Double Circuit 132kV Line and Associated Infrastructure in Copperton in the Northern Cape. Banzai Environmental (Pty) Ltd, Bloemfontein.
- Butler, E., 2022. Palaeontological Impact Assessment for the proposed Hoekplaas WEF near Victoria West in the Northern Cape. Banzai Environmental (Pty) Ltd, Bloemfontein.
- Butler, E., 2022. Palaeontological Desktop Assessment (PDA) assessing the proposed Prospecting Right Application without bulk sampling for the Prospecting of Diamonds Alluvial (DA), Diamonds General (D), Diamonds in Kimberlite (DK) & Diamonds (DIA) on the Remaining Extent of the Farm Goede Hoop 547, Remaining Extent of the Farm 548, Remaining Extent of Portion 2 and Portion 3 of the Farm Skeyfontein 536, Registration Division: Hay, Northern Cape Province. Banzai Environmental (Pty) Ltd, Bloemfontein.
- Butler, E., 2022. Palaeontological Impact Assessment for the proposed extension of Duine Weg Road between Pellsrus and Marina Martinique as well as a Water Use Authorisation (WUA) for the project. Banzai Environmental (Pty) Ltd, Bloemfontein.
- Butler, E., 2022. Proposed Mimosa Residential Development and Associated Infrastructure on Fairview Erven, in Gqeberha (Port Elizabeth), Nelson Mandela Bay Metropolitan Municipality, Eastern Cape Province. Banzai Environmental (Pty) Ltd, Bloemfontein.



- Butler, E., 2022. Palaeontological Impact Assessment for the Witteberge Sand Mine on the remainder of farm Elandskrag Plaas 269 located in the Magisterial District of Laingsburg and Central Karoo District Municipality in the Western Cape. Banzai Environmental (Pty) Ltd, Bloemfontein.
- Butler, E., 2022. Palaeontological Desktop Assessment to assess the Palaeontology for the Somkhele Anthracite Mine's Prospecting Right Application, on the Remainder of the Farm Reserve no 3 No 15822 within the uMkhanyakude District Municipality and the Mtubatuba Local Municipality, KwaZulu Natal. Banzai Environmental (Pty) Ltd, Bloemfontein.
- Butler, E. 2022. Palaeontological Desktop Assessment to assess the proposed Altina 120 MW Solar Photovoltaic (PV) Project near Orkney in the Free State
- Butler, E. 2022. Palaeontological Desktop Assessment to assess the proposed SERE Solar Photovoltaic Plant Phase 1A and associated infrastructure in the Western Cape Province.
- Butler, E. 2022. Palaeontological Impact Assessment for the proposed development of a 10 MW Solar Photovoltaic (PV) Plant and associated grid connection infrastructure on Portion 9 of the Farm Little Chelsea 10, Eastern Cape Province.
- Butler, E. 2022. Palaeontological Desktop Assessment to assess the proposed Dominion 1 Solar Park, located on the Remaining Extent of Portion 18 of Farm 425, near Klerksdorp within the North-West Province.
- Butler, E., 2022. Palaeontological Desktop Assessment to assess the proposed Dominion 2 Solar Park, located on the Remaining Extent of Portion 8 of Farm 425, near Klerksdorp within the North-West Province.
- Butler, E., 2022. Palaeontological Desktop Assessment to assess the proposed Dominion 3 Solar Park, located on the Remaining Extent of Portion 11 of Farm 425, and Remaining Extent of Portion 31 of Farm 425 near Klerksdorp within the North-West Province
- Butler, E., 2022. Palaeontological Impact Assessment to assess the Delta Solar Power Plant on the remaining extent of the farm Kareefontein No. 340, Dr Ruth Segomotsi Mompati District Municipality, Lekwa-Teemane Local Municipality near Bloemhof in the North West Province
- Butler, E., 2022. Palaeontological Impact Assessment to assess the Sonneblom Solar Power Plant (SPP) on Portion 1 of the farm Blydschap No. 504 within the Mangaung Metropolitan Municipality, southeast of Bloemfontein in the Free State.
- Butler, E., 2022. Palaeontological Impact Assessment for the proposed Naos Solar PV One Project near Viljoenskroon in the Free State.
- Butler, E., 2022. Palaeontological Impact Assessment for the proposed Naos Solar PV Two Project near Viljoenskroon in the Free State.
- Butler, E., 2022. Palaeontological Impact Assessment for the proposed Naos Solar PV Two Project near Viljoenskroon in the Free State
- Butler, E., 2022. Palaeontological Impact Assessment for the Ngwedi Solar Power near Viljoenskroon in the Free State.
- Butler, E., 2022. Palaeontological Impact Assessment for the Noko Solar Power Plant and power line near Orkney in the North West.
- Butler, E., 2022. Palaeontological Impact Assessment for the Proposed Power Line as part of the Paleso Solar Power Plant near Viljoenskroon in the Free State
- Butler, E., 2022. Palaeontological Impact Assessment for the Thakadu Solar Plant which near Viljoenskroon in the Free State
- Butler, E., 2022. Palaeontological Impact Assessment of the Kentani, Braklaagte, Klipfontein, Klipfontein 2, Leliehoek and Sonoblomo PV Facilities located near Dealsville in the Free State Province
- Butler, E., 2022. Palaeontological Impact Assessment for the proposed Harvard 1 Solar Photovoltaic (PV) facility on Portion 5 of Farm Spes Bona no 2355, Mangaung Metropolitan Municipality in the Free State.
- Butler, E., 2022. Palaeontological Impact Assessment for proposed Harvard 2 Solar Photovoltaic (PV) facility on Portion 8 of Farm Spes Bona No 2355, Mangaung Metropolitan Municipality in the Free State.
- Butler, E., 2022. Palaeontological Impact Assessment for the proposed Doornrivier Solar 1, southwest of Matjhabeng (formerly Virginia) in the Free State
- Butler, E., 2022. Palaeontological Desktop Assessment for the proposed Leeuwbosch PV solar photovoltaic (PV) plant and associated infrastructure on Portion 37 of the Farm Leeuwbosch No. 44



near Leeudoringstad within the Maquassi Hills Local Municipality in the Dr Kenneth Kaunda District Municipality in the North West Province.