



An EOH Company

**ESPERO PROPERTIES (PTY) LTD: PROPOSED LOTUS  
GARDENS X17 RETAIL CENTRE DEVELOPMENT, LOTUS  
GARDENS, CITY OF TSHWANE, GAUTENG PROVINCE**

**Archaeological Impact Assessment**

A 3D rendering of a globe with water splashing over it, set against a white background with a reflection below.

**Innovation in  
Sustainability**

The logo for EOH, consisting of the letters 'EOH' in a bold, white, sans-serif font with a small triangle above the 'O'.

**Prepared for: Espero Properties (Pty) Ltd**

**Prepared by: Exigo Sustainability**



An EOH Company

Email info@exigo3.com  
Tel +27 012 751 2160  
Fax +27 086 607 2406

The Village Office Park (Block E),  
309 Glenwood Road, Faerie Glen,  
Pretoria, 0043

Postnet Suite 74,  
Private Bag X07,  
Arcadia, 0007

Innovation in  
Sustainability

[www.exigo3.com](http://www.exigo3.com)

## **ARCHAEOLOGICAL IMPACT ASSESSMENT (AIA) ON A PORTION 539 OF THE FARM PRETORIA TOWN AND TOWNLANDS 351 JR , GAUTENG PROVINCE FOR THE PROPOSED LOTUS GARDENS X17 RETAIL CENTRE DEVELOPMENT, CITY OF TSHWANE, GAUTENG PROVINCE**

---

### **Conducted on behalf of:**

Espero Properties (Pty) Ltd  
Exigo Sustainability

### **Compiled by:**

Nelius Kruger (BA, BA Hons. Archaeology Pret.)

### **Reviewed by:**

Chantal Uys (BHCS Hons Archaeology)  
Michael Grobler (Pr.Sci.Nat)

### **Document History**

Document Version 1 (Draft) – 30 May 2016

Document Version 2 (Final) – 15 September 2016



An EOH Company

Email info@exigo3.com  
Tel +27 012 751 2160  
Fax +27 086 607 2406

The Village Office Park (Block E),  
309 Glenwood Road, Faerie Glen,  
Pretoria, 0043

Postnet Suite 74,  
Private Bag X07,  
Arcadia, 0007

Innovation in  
Sustainability

www.exigo3.com

Although Exigo Sustainability exercises due care and diligence in rendering services and preparing documents, Exigo Sustainability accepts no liability, and the client, by receiving this document, indemnifies Exigo Sustainability and its directors, managers, agents and employees against all actions, claims, demands, losses, liabilities, costs, damages and expenses arising from or in connection with services rendered, directly or indirectly by Exigo Sustainability and by the use of the information contained in this document.

This document contains confidential and proprietary information equally shared between Exigo Sustainability and Espero Properties (Pty) Ltd, and is protected by copyright in favour of these companies and may not be reproduced, or used without the written consent of these companies, which has been obtained beforehand. This document is prepared exclusively for Espero Properties (Pty) Ltd and is subject to all confidentiality, copyright and trade secrets, rules, intellectual property law and practices of South Africa.

Exigo Sustainability promotes the conservation of sensitive archaeological and heritage resources and therefore uncompromisingly adheres to relevant Heritage Legislation (National Heritage Resources Act no. 25 of 1999, Human Tissue Act 65 of 1983 as amended, Removal of Graves and Dead Bodies Ordinance no. 7 of 1925, Excavations Ordinance no. 12 of 1980). In order to ensure best practices and ethics in the examination, conservation and mitigation of archaeological and heritage resources, Exigo Sustainability follows the Minimum Standards: Archaeological and Palaeontological Components of Impact Assessment as set out by the South African Heritage Resources Agency (SAHRA) and the CRM section of the Association for South African Professional Archaeologists (ASAPA).

---

**DECLARATION**

---

I, Nelius Le Roux Kruger, declare that –

- I act as the independent specialist;
- I am conducting any work and activity relating to the proposed Lotus Gardens X17 Retail Centre Development in an objective manner, even if this results in views and findings that are not favourable to the client;
- I declare that there are no circumstances that may compromise my objectivity in performing such work;
- I have the required expertise in conducting the specialist report and I will comply with legislation, including the relevant Heritage Legislation (National Heritage Resources Act no. 25 of 1999, Human Tissue Act 65 of 1983 as amended, Removal of Graves and Dead Bodies Ordinance no. 7 of 1925, Excavations Ordinance no. 12 of 1980), the Minimum Standards: Archaeological and Palaeontological Components of Impact Assessment (SAHRA and the CRM section of ASAPA), regulations and any guidelines that have relevance to the proposed activity;
- I have not, and will not engage in, conflicting interests in the undertaking of the activity;
- I undertake to disclose to the applicant and the competent authority all material information in my possession that reasonably has or may have the potential of influencing - any decision to be taken with respect to the application by the competent authority; and - the objectivity of any report, plan or document to be prepared by myself for submission to the competent authority;
- All the particulars furnished by me in this declaration are true and correct.



---

Signature of specialist

**Company:** Exigo Sustainability

**Date:** 15 September 2016

## EXECUTIVE SUMMARY

---

This report details the results of an Archaeological Impact Assessment (AIA) study on Portion 539 of the farm Pretoria Town and Townlands 351 JR, subject to an Environmental Basic Assessment (BA) process for the proposed Lotus Gardens X17 Retail Centre Development in Lotus Gardens, City of Tshwane, Gauteng Province. The project entails the proposed development of a retail shopping centre making provision for fast food outlets over a surface area of approximately **2.3ha**. The report includes background information on the area's archaeology, its representation in Southern Africa, and the history of the larger area under investigation, survey methodology and results as well as heritage legislation and conservation policies. A copy of the report will be supplied to the South African Heritage Resources Agency (SAHRA) and recommendations contained in this document will be reviewed.

A large number of archaeological and historical studies have been conducted in Gauteng and around Pretoria, most of which infer a varied and rich heritage landscape. The literature shows evidence of an archaeological heritage that spans from the Early Stone Age, Middle Stone Age to the Later- Stone, as well as evidence of pastoralism and Iron Age farmers. Specifically, Pretoria holds a significant Farmer and Colonial horizon with remnants of several of the Batswana tribes tracing their origins back to the Highveld and Magaliesberg region during the 18<sup>th</sup> century and 19<sup>th</sup> century. In addition, Colonial conflict is richly represented in the larger Gauteng with the first South African War of Independence (1880-1881) and the Anglo-Boer War (1899-1902) having a significant historical influence on the town of Pretoria and its environs.

The proposed Lotus Gardens X17 Retail Centre Development area is situated in environments that have been transformed and degraded as a result of urbanisation as well as natural elements and as such, no archaeological objects or sites, or features of heritage potential were noted during the site survey of the development footprint. It might be assumed that these areas have largely been sterilized of heritage remains, especially those dating to prehistorical times. The following general recommendations are made based on general observations in the proposed Lotus Gardens X17 Retail Centre Development area:

- A Palaeontological Impact Assessment should be considered where bedrock is to be impacted on and, should fossil remains such as fossil fish, reptiles or vitrified wood be exposed during construction, these objects should be carefully safeguarded and the relevant heritage resources authority (SAHRA) should be notified immediately so that appropriate action can be taken by a professional palaeontologist. A general watching brief monitoring process is recommended whereby an informed ECO inspects the construction sites on a regular basis in order to monitor possible impacts on heritage resources. Should any subsurface archaeological or historical material or heritage resources be exposed during construction activities, all activities should be suspended and the archaeological specialist should be notified immediately

***No heritage resources have been documented in the proposed Lotus Gardens X17 Retail Centre Development footprint areas. It is the opinion of the author of this Archaeological Impact Assessment Report that the proposed Lotus Gardens X17 Retail Centre Development in Lotus Gardens will have no impact on archaeological resources, the built environment, the cultural landscape or human burials. The project should be allowed to proceed from a culture resources management perspective on the condition that the relevant Heritage Resources authority approves these findings and provided that no subsurface heritage remains are encountered during construction.***

It is essential that cognisance be taken of the larger archaeological landscape of the Gauteng Province and the Lotus Gardens region in order to avoid the destruction of previously undetected heritage sites. Should any previously undetected heritage resources be exposed or uncovered during construction phases of the proposed project, these should immediately be reported to SAHRA. Since the intrinsic heritage and social value of graves and cemeteries are highly significant, these resources require special management measures. Should human remains be discovered at any stage, these should be reported to the Heritage Specialist and relevant authorities (SAHRA) and development activities should be suspended until the site has been inspected by the Specialist. The Specialist will advise on further management actions and possible relocation of human remains in accordance with the Human Tissue Act (Act 65 of 1983 as amended), the Removal of Graves and Dead Bodies Ordinance (Ordinance no. 7 of 1925), the National Heritage Resources Act (Act no. 25 of 1999) and any local and regional provisions, laws and by-laws pertaining to human remains. A full social consultation process should occur in conjunction with the mitigation of cemeteries and burials.

This report details the methodology, limitations and recommendations relevant to these heritage areas, as well as areas of proposed development. It should be noted that recommendations and possible mitigation measures are valid for the duration of the development process, and mitigation measures might have to be implemented on additional features of heritage importance not detected during this Phase 1 assessment (e.g. uncovered during the construction process).

---

## NOTATIONS AND TERMS/TERMINOLOGY

---

**Absolute dating:**

Absolute dating provides specific dates or range of dates expressed in years.

**Archaeology:**

The study of the human past through its material remains.

**Archaeological record:**

The archaeological record minimally includes all the material remains documented by archaeologists. More comprehensive definitions also include the record of culture history and everything written about the past by archaeologists.

**Artefact:**

Entities whose characteristics result or partially result from human activity. The shape and other characteristics of the artefact are not altered by removal of the surroundings in which they are discovered. In the Southern African context examples of artefacts include potsherds, iron objects, stone tools, beads and hut remains.

**Assemblage:**

A group of artefacts recurring together at a particular time and place, and representing the sum of human activities.

**<sup>14</sup>C or radiocarbon dating:**

The <sup>14</sup>C method determines the absolute age of organic material by studying the radioactivity of carbon. It is reliable for objects not older than 70 000 years by means of isotopic enrichment. The method becomes increasingly inaccurate for samples younger than ±250 years.

**Ceramic Facies:**

In terms of the cultural representation of ceramics, a facies is denoted by a specific branch of a larger ceramic tradition. A number of ceramic facies thus constitute a ceramic tradition.

**Ceramic Tradition:**

In terms of the cultural representation of ceramics, a series of ceramic units constitutes as ceramic tradition.

**Context:**

An artefact's context usually consists of its immediate *matrix*, its *provenience* and its *association* with other artefacts. When found in *primary context*, the original artefact or structure was undisturbed by natural or human factors until excavation and if in *secondary context*, disturbance or displacement by later ecological action or human activities occurred.

**Culture:**

A contested term, "culture" could minimally be defined as the learned and shared things that people have, do and think.

**Cultural Heritage Resource:**

The broad generic term *Cultural Heritage Resources* refers to any physical and spiritual property associated with past and present human use or occupation of the environment, cultural activities and history. The term includes sites, structures, places, natural features and material of palaeontological, archaeological, historical, aesthetic, scientific, architectural, religious, symbolic or traditional importance to specific individuals or groups, traditional systems of cultural practice, belief or social interaction.

**Cultural landscape:**

A cultural landscape refers to a distinctive geographic area with cultural significance.

**Cultural Resource Management (CRM):**

A system of measures for safeguarding the archaeological heritage of a given area, generally applied within the framework of legislation designed to safeguard the past.

**Ecofact:**

Non artefactual material remains that has cultural relevance which provides information about past human activities. Examples would include remains or evidence of domesticated animals or plant species.

**Excavation:**

The principal method of data acquisition in archaeology, involving the systematic uncovering of archaeological remains through the removal of the deposits of soil and the other material covering and accompanying it.

**Feature:**

Non-portable artefacts, in other words artefacts that cannot be removed from their surroundings without destroying or altering their original form. Hearths, roads, and storage pits are examples of archaeological features

**GIS:**

Geographic Information Systems are computer software that allows layering of various types of data to produce complex maps; useful for predicting site location and for representing the analysis of collected data within sites and across regions.

**Historical archaeology:**

Primarily that aspect of archaeology which is complementary to history based on the study of written sources. In the South African context it concerns the recovery and interpretation of relics left in the ground in the course of Europe's discovery of South Africa, as well as the movements of the indigenous groups during, and after the "Great Scattering" of Bantu-speaking groups – known as the *mfecane* or *difaqane*.

**Impact:** A description of the effect of an aspect of the development on a specified component of the biophysical, social or economic environment within a defined time and space.

**Iron Age:**

Also known as "Farmer Period", the "Iron Age" is an archaeological term used to define a period associated with domesticated livestock and grains, metal working and ceramic manufacture.

**Lithic:**

Stone tools or waste from stone tool manufacturing found on archaeological sites.

**Management / Management Actions:**

Actions – including planning and design changes - that enhance benefits associated with a proposed development, or that avoids, mitigate, restore, rehabilitate or compensate for the negative impacts.

**Matrix:**

The material in which an artefact is situated (sediments such as sand, ashy soil, mud, water, etcetera). The matrix may be of natural origin or human-made.

**Megalith:**

A large stone, often found in association with others and forming an alignment or monument, such as large stone statues.

**Midden:**

Refuse that accumulates in a concentrated heap.

**Microlith:**

A small stone tool, typically knapped of flint or chert, usually about three centimetres long or less.

**Monolith:**

A geological feature such as a large rock, consisting of a single massive stone or rock, or a single piece of rock placed as, or within, a monument or site.

**Oral Histories:**

The historical narratives, stories and traditions passed from generation to generation by word of mouth.

**Phase 1 CRM Assessment:**

An Impact Assessment which identifies archaeological and heritage sites, assesses their significance and comments on the impact of a given development on the sites. Recommendations for site mitigation or conservation are also made during this phase.

**Phase 2 CRM Study:**

In-depth studies which could include major archaeological excavations, detailed site surveys and mapping / plans of sites, including historical / architectural structures and features. Alternatively, the sampling of sites by collecting material, small test pit excavations or auger sampling is required. Mitigation / Rescue involves planning the protection of significant sites or sampling through excavation or



collection (in terms of a permit) at sites that may be lost as a result of a given development.

**Phase 3 CRM Measure:**

A Heritage Site Management Plan (for heritage conservation), is required in rare cases where the site is so important that development will not be allowed and sometimes developers are encouraged to enhance the value of the sites retained on their properties with appropriate interpretive material or displays.

**Prehistoric archaeology:**

That aspect of archaeology which concerns itself with the development of humans and their culture before the invention of writing. In South Africa, prehistoric archaeology comprises the study of the Early Stone Age, the Middle Stone Age and the greater part of the Later Stone Age and the Iron Age.

**Probabilistic Sampling:**

A sampling strategy that is not biased by any person's judgment or opinion. Also known as statistical sampling, it includes systematic, random and stratified sampling strategies.

**Provenience**

Provenience is the three-dimensional (horizontal and vertical) position in which artefacts are found. Fundamental to ascertaining the provenience of an artefact is *association*, the co-occurrence of an artefact with other archaeological remains; and *superposition*, the principle whereby artefacts in lower levels of a matrix were deposited before the artefacts found in the layers above them, and are therefore older.

**Random Sampling:**

A probabilistic sampling strategy whereby randomly selected sample blocks in an area are surveyed. These are fixed by drawing coordinates of the sample blocks from a table of random numbers.

**Relative dating:**

The process whereby the relative antiquity of sites and objects are determined by putting them in sequential order but not assigning specific dates.

**Remote Sensing:**

The small or large-scale acquisition of information of an object or phenomenon, by the use of either recording or real-time sensing device(s) that is not in physical or intimate contact with the object (such as by way of aircraft, spacecraft or satellite). Here, ground-based geophysical methods such as Ground Penetrating Radar and Magnetometry are often used for archaeological imaging.

**Rock Art Research:**

Rock art can be "decoded" in order to inform about cultural attributes of prehistoric societies, such as dress-code, hunting and food gathering, social behaviour, religious practice, gender issues and political issues.

**Scoping Assessment:**

The process of determining the spatial and temporal boundaries (i.e. extent) and key issues to be addressed in an impact assessment. The main purpose is to focus the impact assessment on a manageable number of important questions on which decision making is expected to focus and to ensure that only key issues and reasonable alternatives are examined. The outcome of the scoping process is a Scoping Report that includes issues raised during the scoping process, appropriate responses and, where required, terms of reference for specialist involvement.

**Sensitive:**

Often refers to graves and burial sites although not necessarily a heritage place, as well as ideologically significant sites such as ritual / religious places. *Sensitive* may also refer to an entire landscape / area known for its significant heritage remains.

**Site (Archaeological):**

A distinct spatial clustering of artefacts, features, structures, and organic and environmental remains, as the residue of human activity. These include surface sites, caves and rock shelters, larger open-air sites, sealed sites (deposits) and river deposits. Common functions of archaeological sites include living or habitation sites, kill sites, ceremonial sites, burial sites, trading, quarry, and art sites,

**Slag:**

The material residue of smelting processes from metalworking.

**Stone Age:**

An archaeological term used to define a period of stone tool use and manufacture.

**Stratigraphy:**

This principle examines and describes the observable layers of sediments and the arrangement of strata in deposits

**Stratified Sampling:**

A probabilistic sampling strategy whereby a study area is divided into appropriate zones – often based on the probable location of archaeological areas, after which each zone is sampled at random.

**Systematic Sampling:**

A probabilistic sampling strategy whereby a grid of sample blocks is set up over the survey area and each of these blocks is equally spaced and searched.

**Tradition:**

Artefact types, assemblages of tools, architectural styles, economic practices or art styles that last longer than a phase and even a horizon are describe by the term *tradition*. A common example of this is the early Iron Age tradition of Southern Africa that originated ± 200 AD and came to an end at about 900 AD.

**Trigger:** A particular characteristic of either the receiving environment or the proposed project which indicates that there is likely to be an *issue* and/or potentially significant *impact* associated with that proposed development that may require specialist input. Legal requirements of existing and future legislation may also trigger the need for specialist involvement.

**Tuyère:**

A ceramic blow-tube used in the process of iron smelting / reduction.

**LIST OF ABBREVIATIONS**

<b>Abbreviation</b>	<b>Description</b>
ASAPA	Association for South African Professional Archaeologists
AIA	Archaeological Impact Assessment
BP	Before Present
BCE	Before Common Era
CRM	Culture Resources Management
EIA	Early Iron Age (also Early Farmer Period)
EIA	Environmental Impact Assessment
EFP	Early Farmer Period (also Early Iron Age)
ESA	Earlier Stone Age
GIS	Geographic Information Systems
HIA	Heritage Impact Assessment
ICOMOS	International Council on Monuments and Sites
K2/Map	K2/Mapungubwe Period
LFP	Later Farmer Period (also Later Iron Age)
LIA	Later Iron Age (also Later Farmer Period)
LSA	Later Stone Age
MIA	Middle Iron Age (also Early later Farmer Period)
MRA	Mining Right Area
MSA	Middle Stone Age
NHRA	National Heritage Resources Act No.25 of 1999, Section 35
PFS	Pre-Feasibility Study
PHRA	Provincial Heritage Resources Authorities
SAFA	Society for Africanist Archaeologists
SAHRA	South African Heritage Resources Association
YCE	Years before Common Era (Present)

**TABLE OF CONTENTS**

---

<b>EXECUTIVE SUMMARY .....</b>	<b>4</b>
<b>1 BACKGROUND.....</b>	<b>14</b>
1.1 SCOPE AND MOTIVATION .....	14
1.2 PROJECT DIRECTION .....	14
1.3 PROJECT BRIEF .....	14
1.4 TERMS OF REFERENCE .....	16
1.5 CRM: LEGISLATION, CONSERVATION AND HERITAGE MANAGEMENT.....	16
1.5.1 <i>Legislation regarding archaeology and heritage sites</i> .....	16
1.5.2 <i>Background to HIA and AIA Studies</i> .....	18
1.6 ASSESSING THE SIGNIFICANCE OF HERITAGE RESOURCES.....	19
- CATEGORIES OF SIGNIFICANCE .....	20
<b>2 REGIONAL CONTEXT.....</b>	<b>22</b>
2.1 AREA LOCATION .....	22
2.2 AREA DESCRIPTION: RECEIVING ENVIRONMENT.....	22
2.3 SITE DESCRIPTION.....	22
<b>3 METHOD OF ENQUIRY.....</b>	<b>25</b>
3.1 SOURCES OF INFORMATION .....	25
3.1.1 <i>Desktop Study</i> .....	25
3.1.2 <i>Aerial Representations and Survey</i> .....	25
3.1.3 <i>Field Survey</i> .....	25
3.2 LIMITATIONS.....	25
3.2.1 <i>Access</i> .....	25
3.2.2 <i>Visibility</i> .....	26
3.2.3 <i>Limitations and Constraints</i> .....	29
3.3 IMPACT ASSESSMENT .....	29
<b>4 ARCHAEO-HISTORICAL CONTEXT.....</b>	<b>29</b>
4.1 THE ARCHAEOLOGY OF SOUTHERN AFRICA.....	29
4.1.1 <i>The Stone Ages</i> .....	30
4.1.2 <i>The Iron Age Farmer Period</i> .....	32
4.1.3 <i>Pastoralism and the last 2000 years</i> .....	33
4.1.4 <i>Historical and Colonial Times and Recent History</i> .....	33
4.2 GREATER TSWANE: SPECIFIC THEMES.....	33
4.2.1 <i>The Earlier and Middle Stone Ages</i> .....	33
4.2.2 <i>The Iron Age / Farmer Period</i> .....	34
4.2.3 <i>Later History and Colonial Period</i> .....	34
4.2.4 <i>Burial Sites / Human Remains</i> .....	35
<b>5 RESULTS: ARCHAEOLOGICAL SURVEY .....</b>	<b>35</b>
5.1 THE STONE AGE .....	35
5.2 THE IRON AGE FARMER PERIOD .....	35
5.3 HISTORICAL / COLONIAL PERIOD AND RECENT TIMES.....	35
5.4 GRAVES .....	35
<b>6 RESULTS: STATEMENT OF SIGNIFICANCE AND IMPACT RATING .....</b>	<b>36</b>
6.1 POTENTIAL IMPACTS AND SIGNIFICANCE RATINGS .....	36
6.1.1 <i>General assessment of impacts on resources</i> .....	36
6.1.2 <i>Direct impact rating</i> .....	36

---

6.2	EVALUATION IMPACTS .....	36
6.2.1	<i>Archaeology</i> .....	37
6.2.2	<i>Built Environment</i> .....	37
6.2.3	<i>Cultural Landscape</i> .....	37
6.2.4	<i>Graves / Human Burials Sites</i> .....	37
6.3	MANAGEMENT ACTIONS .....	37
<b>7</b>	<b>RECOMMENDATIONS.....</b>	<b>39</b>
<b>8</b>	<b>GENERAL COMMENTS AND CONDITIONS .....</b>	<b>40</b>
<b>9</b>	<b>BIBLIOGRAPHY .....</b>	<b>41</b>
<b>10</b>	<b>ADDENDUM 1: CONVENTIONS USED TO ASSESS THE SIGNIFICANCE OF HERITAGE.....</b>	<b>43</b>
10.1	SITE SIGNIFICANCE MATRIX .....	43
10.2	IMPACT ASSESSMENT CRITERIA.....	43
10.3	DIRECT IMPACT ASSESSMENT CRITERIA .....	45
10.4	MANAGEMENT AND MITIGATION ACTIONS.....	46

---

**LIST OF FIGURES**

---

Figure 1-1: General site plan for the proposed Lotus Gardens X17 Retail Centre Development. ....	15
Figure 2-1: 1:50 00 Map representation of the location of the proposed Lotus Gardens X17 Retail Centre Development (sheet 2528CA).....	23
Figure 2-2: Aerial representation of the regional setting for the proposed Lotus Gardens X17 Retail Centre Development. ....	24
Figure 3-1: View of cleared surface cover along the northern periphery of the project area. ....	26
Figure 3-2: Dumping heaps with grass surface cover along the north-western border of the project area. ....	26
Figure 3-3: View of grass cover and shrubs in the project area. ....	27
Figure 3-4: General surroundings in the project area along Acridian Street to the west. ....	27
Figure 3-5: An overgrown dumping heap in the project area. ....	27
Figure 3-6: An ant hill with grass bottle fragments in the project area. ....	28
Figure 3-7: Heaps of building rubble towards eastern periphery of the project area. ....	28
Figure 3-8: A further view of the project area, looking south towards the N4 Magalies Freeway. ....	28

## **1 BACKGROUND**

---

### **1.1 Scope and Motivation**

Exigo Sustainability was commissioned by Espero Properties (Pty) Ltd for an Archaeological Impact Assessment (AIA) study on Portion 539 of the farm Pretoria Town And Townlands 351 JR, subject to an Environmental Basic Assessment (BA) process for the proposed Lotus Gardens X17 Retail Centre Development west of the Pretoria CBD in Tshwane. The rationale of this AIA is to determine the presence of heritage resources such as archaeological and historical sites and features, graves and places of religious and cultural significance in previously unstudied areas; to consider the impact of the proposed project on such heritage resources, and to submit appropriate recommendations with regard to the cultural resources management measures that may be required at affected sites / features.

### **1.2 Project Direction**

Exigo Sustainability's expertise ensures that all projects be conducted to the highest international ethical and professional standards. As archaeological specialist for Exigo Sustainability, Mr Neels Kruger acted as field director for the project; responsible for the assimilation of all information, the compilation of the final consolidated AIA report and recommendations in terms of heritage resources on the demarcated project areas. Mr Kruger is an accredited archaeologist and Culture Resources Management (CRM) practitioner with the Association of South African Professional Archaeologists (ASAPA), a member of the Society for Africanist Archaeologists (SAFA) and the Pan African Archaeological Association (PAA) as well as a Master's Degree candidate in archaeology at the University of Pretoria.

### **1.3 Project Brief**

The proposed Lotus Gardens X17 Retail Centre Development project will consist of construction, operation and maintenance of a retail shopping centre making provision for fast food outlets across a surface area of approximately 2.3ha. Provision will be made for services like water, sewerage, electricity, solid waste disposal and road construction to the proposed development.

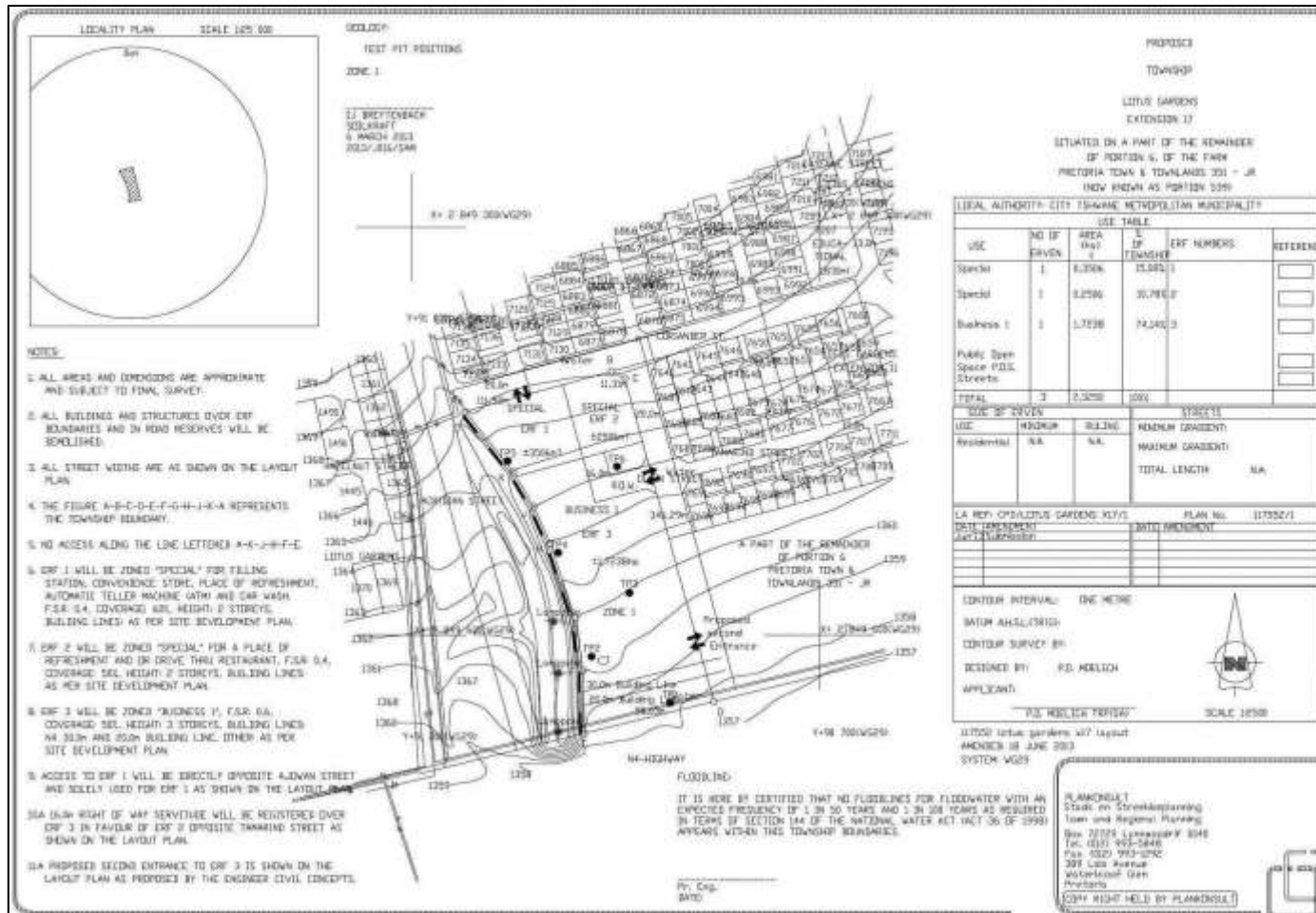


Figure 1-1: General site plan for the proposed Lotus Gardens X17 Retail Centre Development.



#### 1.4 Terms of Reference

Heritage specialist input into the Environmental Impact Assessment (EIA) process is essential to ensure that through the management of change, developments still conserve our heritage resources. Heritage specialist input in EIA processes can play a positive role in the development process by enriching an understanding of the past and its contribution to the present. It is also a legal requirement for certain development categories which may have an impact on heritage resources (Refer to Section 2.5.2).

Thus, EIAs should always include an assessment of Heritage Resources. The heritage component of the EIA is provided for in the **National Environmental Management Act, (Act 107 of 1998)** and endorsed by section 38 of the **National Heritage Resources Act (NHRA - Act 25 of 1999)**. In addition, the NHRA protects all structures and features older than 60 years, archaeological sites and material and graves as well as burial sites. The objective of this legislation is to ensure that developers implement measures to limit the potentially negative effects that the development could have on heritage resources. Based hereon, this project functioned according to the following **terms of reference for** heritage specialist input:

- *Provide detailed updated description of all additional archaeological artefacts, structures (including graves) and settlements which may be affected, if any.*
- *Assess the nature and degree of significance of such resources within the area.*
- *Establish heritage informants/constraints to guide the development process through establishing thresholds of impact significance.*
- *Assess any possible impact on the archaeological and historical remains within the area emanating from the proposed development activities.*
- *Propose possible heritage management measures provided that such action is necessitated by the development.*
- *Obtain a comment from the (Gauteng-PHRA).*

#### 1.5 CRM: Legislation, Conservation and Heritage Management

The broad generic term *Cultural Heritage Resources* refers to any physical and spiritual property associated with past and present human use or occupation of the environment, cultural activities and history. The term includes sites, structures, places, natural features and material of palaeontological, archaeological, historical, aesthetic, scientific, architectural, religious, symbolic or traditional importance to specific individuals or groups, traditional systems of cultural practice, belief or social interaction.

##### 1.5.1 Legislation regarding archaeology and heritage sites

The South African Heritage Resources Agency (SAHRA) and their provincial offices aim to conserve and control the management, research, alteration and destruction of cultural resources of South Africa. It is therefore vitally important to adhere to heritage resource legislation at all times.

###### a. National Heritage Resources Act No 25 of 1999, section 35

According to the National Heritage Resources Act of 1999 a historical site is any identifiable building or part thereof, marker, milestone, gravestone, landmark or tell older than 60 years. This clause is commonly known as the "60-years clause". Buildings are amongst the most enduring features of human occupation, and this definition therefore includes all buildings older than 60 years, modern architecture as well as ruins, fortifications and Iron Age settlements. "Tell" refers to the evidence of human existence which is no longer

above ground level, such as building foundations and buried remains of settlements (including artefacts).

The Act identifies heritage objects as:

- objects recovered from the soil or waters of South Africa including archaeological and palaeontological objects, meteorites and rare geological specimens
- visual art objects
- military objects
- numismatic objects
- objects of cultural and historical significance
- objects to which oral traditions are attached and which are associated with living heritage
- objects of scientific or technological interest
- any other prescribed category

With regards to activities and work on archaeological and heritage sites this Act states that:

*“No person may alter or demolish any structure or part of a structure which is older than 60 years without a permit by the relevant provincial heritage resources authority.” (34. [1] 1999:58)*

and

*“No person may, without a permit issued by the responsible heritage resources authority-*

- (a) destroy, damage, excavate, alter, deface or otherwise disturb any archaeological or palaeontological site or any meteorite;*
- (b) destroy, damage, excavate, remove from its original position, collect or own any archaeological or palaeontological material or object or any meteorite;*
- (c) trade in, sell for private gain, export or attempt to export from the Republic any category of archaeological or palaeontological material or object, or any meteorite; or*
- (d) bring onto or use at an archaeological or palaeontological site any excavation equipment or any equipment which assist in the detection or recovery of metals or archaeological and palaeontological material or objects, or use such equipment for the recovery of meteorites. (35. [4] 1999:58).”*

and

*“No person may, without a permit issued by SAHRA or a provincial heritage resources agency-*

- (a) destroy, damage, alter, exhume or remove from its original position or otherwise disturb the grave of a victim of conflict, or any burial ground or part thereof which contains such graves;*
- (b) destroy, damage, alter, exhume, remove from its original position or otherwise disturb any grave or burial ground older than 60 years which is situated outside a formal cemetery administered by a local authority;*

- (c) *bring onto or use at a burial ground or grave referred to in paragraph (a) or (b) and excavation equipment, or any equipment which assists in the detection or recovery of metals (36. [3] 1999:60)."*

**b. Human Tissue Act of 1983 and Ordinance on the Removal of Graves and Dead Bodies of 1925**

Graves 60 years or older are heritage resources and fall under the jurisdiction of both the National Heritage Resources Act and the Human Tissues Act of 1983. However, graves younger than 60 years are specifically protected by the Human Tissues Act (Act 65 of 1983) and the Ordinance on the Removal of Graves and Dead Bodies (Ordinance 7 of 1925) as well as any local and regional provisions, laws and by-laws. Such burial places also fall under the jurisdiction of the National Department of Health and the Provincial Health Departments. Approval for the exhumation and re-burial must be obtained from the relevant Provincial MEC as well as the relevant Local Authorities.

**1.5.2 Background to HIA and AIA Studies**

South Africa's unique and non-renewable archaeological and palaeontological heritage sites are 'generally' protected in terms of the National Heritage Resources Act (Act No 25 of 1999, section 35) and may not be disturbed at all without a permit from the relevant heritage resources authority. Heritage sites are frequently threatened by development projects and both the environmental and heritage legislation require impact assessments (HIAs & AIAs) that identify all heritage resources in areas to be developed. Particularly, these assessments are required to make recommendations for protection or mitigation of the impact of the sites. HIAs and AIAs should be done by qualified professionals with adequate knowledge to (a) identify all heritage resources including archaeological and palaeontological sites that might occur in areas of development and (b) make recommendations for protection or mitigation of the impact on the sites.

The National Heritage Resources Act (Act No. 25 of 1999, section 38) provides guidelines for Cultural Resources Management and prospective developments:

**"38. (1) Subject to the provisions of subsections (7), (8) and (9), any person who intends to undertake a development categorised as:**

- (a) the construction of a road, wall, powerline, pipeline, canal or other similar form of linear development or barrier exceeding 300m in length;*
- (b) the construction of a bridge or similar structure exceeding 50m in length;*
- (c) any development or other activity which will change the character of a site:*
  - (i) exceeding 5 000 m<sup>2</sup> in extent; or*
  - (ii) involving three or more existing erven or subdivisions thereof; or*
  - (iii) involving three or more erven or divisions thereof which have been consolidated within the past five years; or*
  - (iv) the costs of which will exceed a sum set in terms of regulations by SAHRA or a provincial heritage resources authority;*
- (d) the re-zoning of a site exceeding 10 000 m<sup>2</sup> in extent; or*
- (e) any other category of development provided for in regulations by SAHRA or a provincial heritage resources authority,*

*must at the very earliest stages of initiating such a development, notify the responsible heritage resources authority and furnish it with details regarding the location, nature and extent of the proposed development.”*

And:

*“The responsible heritage resources authority must specify the information to be provided in a report required in terms of subsection (2)(a): Provided that the following must be included:*

- (a) The identification and mapping of all heritage resources in the area affected;*
- (b) an assessment of the significance of such resources in terms of the heritage assessment criteria set out in section 6(2) or prescribed under section 7;*
- (c) an assessment of the impact of the development on such heritage resources;*
- (d) an evaluation of the impact of the development on heritage resources relative to the sustainable social and economic benefits to be derived from the development;*
- (e) the results of consultation with communities affected by the proposed development and other interested parties regarding the impact of the development on heritage resources;*
- (f) if heritage resources will be adversely affected by the proposed development, the consideration of alternatives; and*
- (g) plans for mitigation of any adverse effects during and after the completion of the proposed development (38. [3] 1999:64).”*

**Consequently, section 35 of the Act requires Heritage Impact Assessments (HIAs) or Archaeological Impact Assessments (AIAs) to be done for such developments in order for all heritage resources, that is, all places or objects of aesthetics, architectural, historic, scientific, social, spiritual, linguistic or technological value or significance to be protected. Thus any assessment should make provision for the protection of all these heritage components, including archaeology, shipwrecks, battlefields, graves, and structures older than 60 years, living heritage, historical settlements, landscapes, geological sites, palaeontological sites and objects.**

## **1.6 Heritage resources management and conservation**

### **1.6.1 Assessing the Significance of Heritage Resources**

Archaeological sites, as previously defined in the National Heritage Resources Act (Act 25 of 1999) are places in the landscape where people have lived in the past – generally more than 60 years ago – and have left traces of their presence behind. In South Africa, archaeological sites include hominid fossil sites, places where people of the Earlier, Middle and Later Stone Age lived in open sites, river gravels, rock shelters and caves, Iron Age sites, graves, and a variety of historical sites and structures in rural areas, towns and cities. Palaeontological sites are those with fossil remains of plants and animals where people were not involved in the accumulation of the deposits. The basic principle of cultural heritage conservation is that archaeological and other heritage sites are valuable, scarce and *non-renewable*. Many such sites are unfortunately lost on a daily basis through development for housing, roads and infrastructure and once archaeological sites are

damaged, they cannot be re-created as site integrity and authenticity is permanently lost. Archaeological sites have the potential to contribute to our understanding of the history of the region and of our country and continent. By preserving links with our past, we may not be able to revive lost cultural traditions, but it enables us to appreciate the role they have played in the history of our country.

#### - Categories of significance

Rating the significance of archaeological sites, and consequently grading the potential impact on the resources is linked to the significance of the site itself. The significance of an archaeological site is based on the amount of deposit, the integrity of the context, the kind of deposit and the potential to help answer present research questions. Historical structures are defined by Section 34 of the National Heritage Resources Act, 1999, while other historical and cultural significant sites, places and features, are generally determined by community preferences. The guidelines as provided by the NHRA (Act No. 25 of 1999) in Section 3, with special reference to subsection 3, are used when determining the cultural significance or other special value of archaeological or historical sites. In addition, ICOMOS (the Australian Committee of the International Council on Monuments and Sites) highlights four cultural attributes, which are valuable to any given culture:

##### - *Aesthetic value:*

Aesthetic value includes aspects of sensory perception for which criteria can and should be stated. Such criteria include consideration of the form, scale, colour, texture and material of the fabric, the general atmosphere associated with the place and its uses and also the aesthetic values commonly assessed in the analysis of landscapes and townscape.

##### - *Historic value:*

Historic value encompasses the history of aesthetics, science and society and therefore to a large extent underlies all of the attributes discussed here. Usually a place has historical value because of some kind of influence by an event, person, phase or activity.

##### - *Scientific value:*

The scientific or research value of a place will depend upon the importance of the data involved, on its rarity, quality and on the degree to which the place may contribute further substantial information.

##### - *Social value:*

Social value includes the qualities for which a place has become a focus of spiritual, political, national or other cultural sentiment to a certain group.

It is important for heritage specialist input in the EIA process to take into account the heritage management structure set up by the NHR Act. It makes provision for a 3-tier system of management including the South Africa Heritage Resources Agency (SAHRA) at a national level, Provincial Heritage Resources Authorities (PHRAs) at a provincial and the local authority. The Act makes provision for two types or forms of protection of heritage resources; i.e. formally protected and generally protected sites:

#### **Formally protected sites:**

- Grade 1 or national heritage sites, which are managed by SAHRA
- Grade 2 or provincial heritage sites, which are managed by the provincial HRA (Gauteng-PHRA).
- Grade 3 or local heritage sites.

**Generally protected sites:**

- Human burials older than 60 years.
- Archaeological and palaeontological sites.
- Shipwrecks and associated remains older than 70 years.
- Structures older than 60 years.

With reference to the evaluation of sites, the certainty of prediction is definite, unless stated otherwise and if the significance of the site is rated high, the significance of the impact will also result in a high rating. The same rule applies if the significance rating of the site is low. The significance of archaeological sites is generally ranked into the following categories.

Significance	Rating Action
No significance: sites that do not require mitigation.	None
Low significance: sites, which may require mitigation.	2a. Recording and documentation (Phase 1) of site; no further action required 2b. Controlled sampling (shovel test pits, augering), mapping and documentation (Phase 2 investigation); permit required for sampling and destruction
Medium significance: sites, which require mitigation.	3. Excavation of representative sample, C14 dating, mapping and documentation (Phase 2 investigation); permit required for sampling and destruction [including 2a & 2b]
High significance: sites, where disturbance should be avoided.	4a. Nomination for listing on Heritage Register (National, Provincial or Local) (Phase 2 & 3 investigation); site management plan; permit required if utilised for education or tourism
High significance: Graves and burial places	4b. Locate demonstrable descendants through social consulting; obtain permits from applicable legislation, ordinances and regional by-laws; exhumation and reinterment [including 2a, 2b & 3]

Furthermore, the significance of archaeological sites was based on six main criteria:

- Site integrity (i.e. primary vs. secondary context),
- Amount of deposit, range of features (e.g., stonewalling, stone tools and enclosures),
- Density of scatter (dispersed scatter),
- Social value,
- Uniqueness, and
- Potential to answer current and future research questions.

**A fundamental aspect in assessing the significance and protection status of a heritage resource is often whether or not the sustainable social and economic benefits of a proposed development outweigh the conservation issues at stake. When, for whatever reason the protection of a heritage site is not deemed necessary or practical, its research potential must be assessed and mitigated in order to gain data / information, which would otherwise be lost.**

## 2 REGIONAL CONTEXT

---

### 2.1 Area Location

The study area is located in the Lotus Gardens residential area on portion 539 of the farm Pretoria Town and Townlands 351 JR in the City of Tshwane Metropolitan Municipality area, generally at **S25.750863° E28.094474°**. It is located approximately 9.5km west of the Pretoria CBD directly north of the N4 Magalies Freeway at the Atteridgeville / Lotus Gardens off-ramp.

The study area appears on 1:50 000 Map Sheet 2528CA (see Figure 2-1).

### 2.2 Area Description: Receiving Environment

The development site lies within the Savanna biome which is the largest biome in Southern Africa. It is characterized by a grassy ground layer and a distinct upper layer of woody plants (trees and shrubs). The study area is characterised by one major landscape type namely slightly undulating to flat plains. The state of the vegetation of the proposed development site is in a highly degraded state. The Skinner Spruit is located to the south of the development site and is the only perennial river in the area. The study area is drained mainly by surface run-off (i.e. sheetwash) with surface water flowing into non-perennial streams of the study area. This water eventually drains into the Skinner Spruit that feeds the Apies River.

### 2.3 Site Description

The project footprint is located on portion 539 of the farm Pretoria Town and Townlands 351 JR. It is bordered to the south by the N4 and to the west by Acridian Street in Lotus Gardens. The surroundings are characterised by slightly undulating to flat plains but no characteristic landscape features are present. Since the site is currently open with no formal land-use, portions of the site have been transformed by digging, refuse dumping and the establishment of footpaths. As such, the site has generally been degraded and surface cover has been altered. Most of the study area is vacant land at present, although being used as a pass-through area by the local community with areas to the north and east used as refuse dumping grounds.

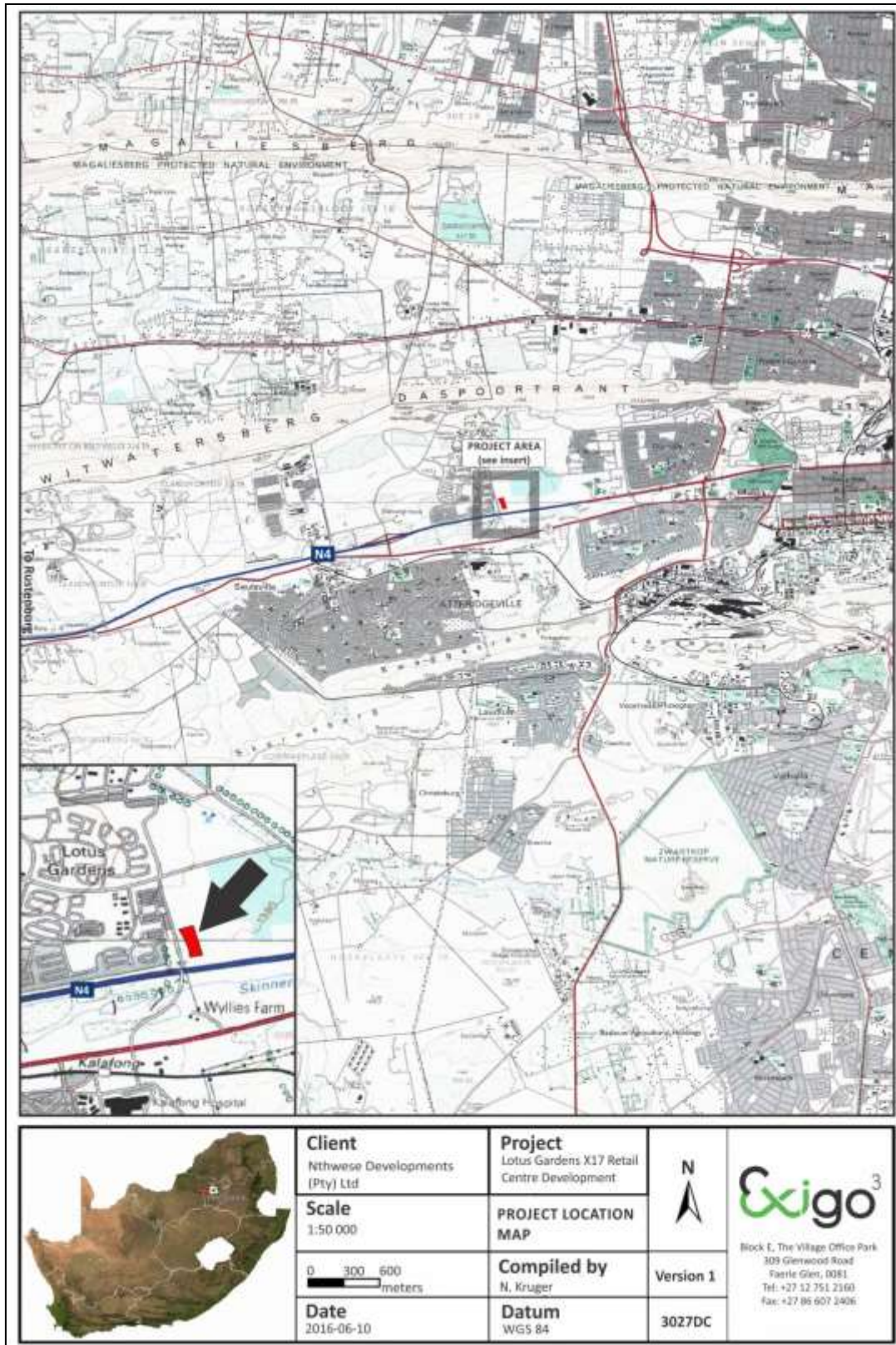


Figure 2-1: 1:50 00 Map representation of the location of the proposed Lotus Gardens X17 Retail Centre Development (sheet 2528CA).





Figure 2-2: Aerial representation of the regional setting for the proposed Lotus Gardens X17 Retail Centre Development.

### **3 METHOD OF ENQUIRY**

---

#### **3.1 Sources of Information**

Data from detailed desktop, aerial and field studies were employed in order to sample surface areas systematically and to ensure a high probability of heritage site recording.

##### **3.1.1 Desktop Study**

A desktop study was prepared in order to contextualize the proposed project within a larger historical milieu. The study focused on relevant previous studies, archaeological and archival sources, aerial photographs, historical maps and local histories, all pertaining to the greater Pretoria area and the larger landscape of this section of the Gauteng Province. The desktop study also examined a number of archaeological and historical impact assessments conducted in the Lotus Gardens surrounds.

##### **3.1.2 Aerial Representations and Survey**

Aerial photography is often employed to locate and study archaeological sites, particularly where larger scale area surveys are performed. This method was applied to assist the foot site survey where depressions, variation in vegetation, soil marks and landmarks were examined. Specific attention was given to shadow sites (shadows of walls or earthworks which are visible early or late in the day), crop mark sites (crop mark sites are visible because disturbances beneath crops cause variations in their height, vigour and type) and soil marks (e.g. differently coloured or textured soil (soil marks) might indicate ploughed-out burial mounds). Attention was also given to moisture differences, as prolonged dampening of soil as a result of precipitation frequently occurs over walls or embankments. By superimposing high frequency aerial photographs with images generated with Google Earth, potential sensitive areas were subsequently identified, geo-referenced and transferred to a handheld GPS device. These areas served as referenced points from where further vehicular and pedestrian surveys were carried out. From the aerial survey it is evident that some surface areas subject to the Lotus Gardens X17 Retail Centre Development have been subjected to historical and more recent degradation and impacts as a result of natural agents as well as urbanisation (see Figure 1-2).

##### **3.1.3 Field Survey**

Archaeological survey implies the systematic procedure of the identification of archaeological sites. An archaeological survey of the footprint area proposed for the Lotus Gardens X17 Retail Centre Development was conducted in May 2016. The process encompassed a systematic field survey in accordance with standard archaeological practice by which heritage resources are observed and documented. In order to sample surface areas systematically and to ensure a high probability of site recording, the footprint was systematically surveyed on foot by means of a transect survey. GPS reference points identified during the aerial survey were also visited and random spot checks were made (see detail in previous section). Using a Garmin E-trex Legend GPS objects and structures of archaeological / heritage value were recorded and photographed with a Canon 450D Digital camera. Real time aerial orientation, by means of a mobile Google Earth application was also employed to investigate possible disturbed areas during the survey.

#### **3.2 Limitations**

##### **3.2.1 Access**

The project site for the Lotus Gardens X17 Retail Centre Development is accessed directly via Acridian Street connecting to the N4 Magalies freeway. Access control is not applied to the area and no restrictions were encountered during the site visit.

### 3.2.2 Visibility

The surrounding vegetation in the study area is mostly comprised out of mixed grasslands and scattered trees as well as pioneering species in disturbed and transformed areas. The general visibility at the time of the AIA survey (May 2016) was moderate to high due to surface vegetation and obstruction (see Figures 3-1 to 3-8). In single cases during the survey sub-surface inspection was possible. Where applied, this revealed no archaeological deposits.



Figure 3-1: View of cleared surface cover along the northern periphery of the project area.



Figure 3-2: Dumping heaps with grass surface cover along the north-westers border of the project area.



Figure 3-3: View of grass cover and shrubs in the project area.



Figure 3-4: General surroundings in the project area along Acridian Street to the west.



Figure 3-5: An overgrown dumping heap in the project area



Figure 3-6: An ant hill with grass bottle fragments in the project area.



Figure 3-7: Heaps of building rubble towards eastern periphery of the project area.



Figure 3-8: A further view of the project area, looking south towards the N4 Magalies Freeway.

### 3.2.3 Limitations and Constraints

The pedestrian site survey for the Lotus Gardens X17 Retail Centre Development Project AIA primarily focused around areas tentatively identified as sensitive and of high heritage probability (i.e. those noted during the aerial survey) as well as areas of high human settlement catchment. The following constraints were encountered:

- **Visibility:** Visibility proved to be somewhat of a constraint in areas with denser surface cover, as well as portions where vegetation is more pristine.

Thus, even though it might be assumed that survey findings are representative of the heritage landscape of the project area for the Lotus Gardens X17 Retail Centre Development, it should be stated that the possibility exists that individual sites could be missed due to the localised nature of some heritage remains as well as the possible presence of sub-surface archaeology. Therefore, maintaining due cognisance of the integrity and accuracy of the archaeological survey, it should be stated that the heritage resources identified during the study do not necessarily represent all the heritage resources present in the project area. The subterranean nature of some archaeological sites, dense vegetation cover and visibility constraints sometimes distort heritage representations and any additional heritage resources located during consequent development phases must be reported to the Heritage Resources Authority or an archaeological specialist.

### 3.3 Impact Assessment

For consistency among specialists, impact assessment ratings by Exigo Specialist are generally done using the Plomp<sup>1</sup> impact assessment matrix scale supplied by Exigo. According to this matrix scale, each heritage receptor in the study area is given an impact assessment. A cumulative assessment for the proposed project is also included.

## 4 ARCHAEO-HISTORICAL CONTEXT

### 4.1 The archaeology of Southern Africa

Archaeology in Southern Africa is typically divided into two main fields of study, the **Stone Age** and the **Iron Age** or **Farmer Period**. The following table provides a concise outline of the chronological sequence of periods, events, cultural groups and material expressions in Southern African pre-history and history.

Table 1 Chronological Periods across Southern Africa

Period	Epoch	Associated cultural groups	Typical Material Expressions
Early Stone Age 2.5m – 250 000 YCE	Pleistocene	Early Hominins: <i>Australopithecines</i> <i>Homo habilis</i> <i>Homo erectus</i>	Typically large stone tools such as hand axes, choppers and cleavers.
Middle Stone Age 250 000 – 25 000 YCE	Pleistocene	First <i>Homo sapiens</i> species	Typically smaller stone tools such as scrapers, blades and points.
Late Stone Age 20 000 BC – present	Pleistocene / Holocene	<i>Homo sapiens sapiens</i> including San people	Typically small to minute stone tools such as arrow heads, points and bladelets.
Early Iron Age / Early Farmer	Holocene	First Bantu-speaking	Typically distinct ceramics, bead ware, iron

<sup>1</sup> Plomp, H.,2004

Period 300 – 900 AD		groups	objects, grinding stones.
Middle Iron Age (Mapungubwe / K2) / early Later Farmer Period 900 – 1350 AD	Holocene	Bantu-speaking groups, ancestors of present-day groups	Typically distinct ceramics, bead ware and iron / gold / copper objects, trade goods and grinding stones.
Late Iron Age / Later Farmer Period 1400 AD -1850 AD	Holocene	Various Bantu-speaking groups including Venda, Thonga, Sotho-Tswana and Zulu	Distinct ceramics, grinding stones, iron objects, trade objects, remains of iron smelting activities including iron smelting furnace, iron slag and residue as well as iron ore.
Historical / Colonial Period ±1850 AD – present	Holocene	Various Bantu-speaking groups as well as European farmers, settlers and explorers	Remains of historical structures e.g. homesteads, missionary schools etc. as well as, glass, porcelain, metal and ceramics.

**4.1.1 The Stone Ages**

**- The Earlier Stone Age (ESA)**

The Earlier Stone Age from between 1.5 million and 250 000 years ago refers to the earliest that *Homo sapiens sapiens* predecessors began making stone tools. The earliest stone tool industry was referred to as the Olduvai Industry originating from stone artefacts recorded at Olduvai Gorge, Tanzania. The Acheulian Industry, the predominant Southern African Early Stone Age Industry, replaced the Olduvai Industry approximately 1.5 million years ago, is attested to in diverse environments and over wide geographical areas. The hallmark of the Acheulian Industry is its large cutting tools (LCTs or bifaces), primarily handaxes and cleavers. Bifaces emerged in East Africa more than 1.5 million years ago but have been reported from a wide range of areas, from South Africa to northern Europe and from India to the Iberian coast. Earlier Stone Age deposits typically occur on the flood-plains of perennial rivers. These ESA open sites sometimes contain stone tool scatters and manufacturing debris ranging from pebble tool choppers to core tools such as handaxes and cleavers. These groups seldom actively hunted and relied heavily on the opportunistic scavenging of meat from carnivore fill sites. The most well-known Early Stone Age site in Southern Africa is Amanzi Springs, situated about 10km north-east of Uitenhage, near Port Elizabeth (Deacon 1970). In a series of spring deposits a large number of stone tools were found in situ to a depth of 3-4m. Wood and seed material preserved remarkably very well within the spring deposits, and possibly date to between 800 000 to 250 000 years old.

**- The Middle Stone Age (MSA)**

The Middle Stone Age (MSA) spans a period from 250 000-30 000 years ago and focuses on the emergence of modern humans through the change in technology, behaviour, physical appearance, art and symbolism. Various stone artefact industries occur during this time period, although less is known about the time prior to 120 000 years ago, extensive systemic archaeological research is being conducted on sites across Southern Africa dating within the last 120 000 years (Thompson & Marean 2008). The large handaxes and cleavers were replaced by smaller stone artefacts called the MSA flake and blade industries. Surface scatters of these flake and blade industries occur widespread across Southern Africa although rarely with any associated botanical and faunal remains. It is also common for these stone artefacts to be found between the surface and approximately 50-80cm below ground. Fossil bone may in rare cases be associated with MSA occurrences (Gess 1969). These stone artefacts, like the Earlier Stone Age handaxes are usually observed in secondary context with no other associated archaeological material. The MSA is distinguished from the ESA by the smaller-sized and distinctly different stone artefacts and chaine operative (method) used in manufacture, the introduction of other types of artefacts and evidence of

symbolic behaviour. The prepared core technique was used for the manufacture of the stone artefacts which display a characteristic faceted striking platform and includes mainly unifacial and bifacial flake blades and points. The Howiesons Poort Industry (80 000-55 000 years ago) is distinguished from the other MSA stone artefacts: the size of tools are generally smaller, the range of raw materials include finer-grained rocks such as silcrete, chalcedony, chert and hornfels, and include segments, backed blades and trapezoids in the stone toolkit which were sometimes hafted (set or glued) onto handles. In addition to stone artefacts, bone was worked into points, possibly hafted, and used as tools for hunting (Deacon & Deacon 1999). Other types of artefacts that have been encountered in archaeological excavations include tick shell beads, the rim pieces of ostrich eggshell (OES) water flasks, ochre-stained pieces of ostrich eggshell and engraved and scratched ochre pieces, as well as the collection of materials for purely aesthetic reasons. The majority of MSA sites occur on flood plains and sometimes in caves and rock shelters. Sites usually consist of large concentrations of knapped stone flakes such as scrapers, points and blades and associated manufacturing debris. Tools may have been hafted but organic materials, such as those used in hafting, seldom remain preserved in the archaeological record. Limited drive-hunting activities are associated with the MSA.

#### - **The Later Stone Age (LSA)**

The Later Stone Age (LSA) spans the period from about 20 000 years ago until the colonial era, although some communities continue making stone tools today. The period between 30 000 and 20 000 years ago is referred to as the transition from the MSA to LSA; although there is a lack of crucial sites and evidence that represent this change. By the time of the Later Stone Age the genus *Homo*, in southern Africa, had developed into *Homo sapiens sapiens*, and in Europe, had already replaced *Homo neanderthalensis*. The LSA is marked by a series of technological innovations, new tools and artefacts, the development of economic, political and social systems, and core symbolic beliefs and rituals. The stone toolkits changed over time according to time-specific needs and raw material availability, from smaller microlithic Robberg, Wilton Industries and in between, the larger Albany/Oakhurst and the Kabeljous Industries. Bored stones used as part of digging sticks, grooved stones for sharpening and grinding and stone tools fixed to handles with mastic also become more common. Fishing equipment such as hooks, gorges and sinkers also appear within archaeological excavations. Polished bone tools such as eyed needles, awls, linkshafts and arrowheads also become a more common occurrence. Most importantly bows and arrows revolutionized the hunting economy. It was only within the last 2000 years that earthenware pottery was introduced, before then tortoiseshell bowls were used for cooking and ostrich eggshell (OES) flasks were used for storing water. Decorative items like ostrich eggshell and marine/fresh water shell beads and pendants were made. Hunting and gathering made up the economic way of life of these communities; therefore, they are normally referred to as hunter-gatherers. Hunter-gatherers hunted both small and large game and gathered edible plant foods from the veld. For those that lived at or close the coast, marine shellfish and seals and other edible marine resources were available for the gathering. The political system was mainly egalitarian, and socially, hunter-gatherers lived in bands of up to twenty people during the scarce resource availability dispersal seasons and aggregated according to kinship relations during the abundant resource availability seasons. Symbolic beliefs and rituals are evidenced by the deliberate burial of the dead and in the rock art paintings and engravings scattered across the Southern African landscape. Sites dating to the LSA are better preserved in rock shelters, although open sites with scatters of mainly stone tools can occur. Well-protected deposits in shelters allow for stable conditions that result in the preservation of organic materials such as wood, bone, hearths, ostrich eggshell beads and even bedding material. By using San (Bushman) ethnographic data a better understanding of this period is possible. South African rock art is also associated with the LSA.



#### 4.1.2 The Iron Age Farmer Period

##### - Early Iron Age (Early Farming Communities)

The Early Iron Age (also Early Farmer Period) marks the movement of Bantu speaking farming communities into South Africa at around 200 A.D. These groups were agro-pastoralists that settled in the vicinity of water in order to provide subsistence for their cattle and crops. Artefact evidence from Early Farmer Period sites is mostly found in the form of ceramic assemblages and the origins and archaeological identities of this period are largely based upon ceramic typologies and sequences, where diagnostic pottery assemblages can be used to infer group identities and to trace movements across the landscape. Early Farmer Period ceramic traditions are classified by some scholars into different “streams” or trends in pot types and decoration that, over time emerged in Southern Africa. These “streams” are identified as the Kwale Branch (east), the Nkope Branch (central) and the Kalundu Branch (west). More specifically, in the northern regions of South Africa at least three settlement phases have been distinguished for prehistoric Bantu-speaking agro-pastoralists. The first phase of the Early Iron Age, known as Happy Rest (named after the site where the ceramics were first identified), is representative of the Western Stream of migrations, and dates to AD 400 - AD 600. The second phase of Diamant is dated to AD 600 - AD 900 and was first recognized at the eponymous site of Diamant in the western Waterberg. The third phase, characterised by herringbone-decorated pottery of the Eiland tradition, is regarded as the final expression of the Early Iron Age (EIA) and occurs over large parts of the North West Province, Northern Province, Gauteng and Mpumalanga. This phase has been dated to about AD 900 - AD 1200. Early Farmer Period ceramics typically display features such as large and prominent inverted rims, large neck areas and fine elaborate decorations. The Early Iron Age continued up to the end of the first millennium AD.

##### - Middle Iron Age / K2 Mapungubwe Period (early Later Farming Communities)

The onset of the middle Iron Age dates back to ±900 AD, a period more commonly known as the Mapungubwe / K2 phase. These names refer to the well-known archaeological sites that are today the pinnacle of South Africa’s Iron Age heritage. The inhabitants of K2 and Mapungubwe, situated on the banks of the Limpopo, were agriculturalists and pastoralists and were engaged in extensive trade activities with local and foreign traders. Although the identity of this Bantu-speaking group remains a point of contestation, the Mapungubwe people were the first state-organized society Southern Africa has known. A considerable amount of golden objects, ivory, beads (glass and gold), trade goods and clay figurines as well as large amounts of potsherds were found at these sites and also appear in sites dating back to this phase of the Iron Age. Ceramics of this tradition take the form of beakers with upright sides and decorations around the base (K2) and shallow-shouldered bowls with decorations as well as globular pots with long necks. (Mapungubwe). The site of Mapungubwe was deserted at around 1250 AD and this also marks the relative conclusion of this phase of the Iron Age.

##### - Later Iron Age (Later Farming Communities)

The late Iron Age of Southern Africa marks the grouping of Bantu speaking groups into different cultural units. It also signals one of the most influential events of the second millennium AD in Southern Africa, the difaqane. The difaqane (also known as “the scattering”) brought about a dramatic and sudden ending to centuries of stable society in Southern Africa. Reasons for this change was essentially the first penetration of the Southern African interior by Portuguese traders, military conquests by various Bantu speaking groups primarily the ambitious Zulu King Shaka and the beginning of industrial developments in South Africa. Different cultural groups were scattered over large areas of the interior. These groups conveyed with them their customs that in the archaeological record manifest in ceramics, beads and other artefacts. This means that distinct pottery typologies can be found in the different late Iron Age groups of South Africa.

#### - **Bantu Speaking Groups in the South African interior**

*It should be noted that terms such as "Nguni", "Sotho", "Venda" and others refer to broad and comprehensive language groups that demonstrated similarities in their origins and language. It does not imply that these Nguni / Sotho groups were homogeneous and static; they rather moved through the landscape and influenced each other in continuous processes marked by cultural fluidity.*

Ethnographers generally divide major Bantu-speaking groups of Southern Africa into two broad linguistic groups, the Nguni and the Sotho with smaller subdivisions under these two main groups. Nguni groups were found in the eastern parts of the interior of South Africa and can be divided into the northern Nguni and the southern Nguni. The various Zulu and Swazi groups were generally associated with the northern Nguni whereas the southern Nguni comprised the Xhosa, Mpondo, Thembu and Mpondomise groups. The same geographically based divisions exist among Sotho groups where, under the western Sotho (or Tswana), groups such as the Rolong, Hurutshe, Kwena, Fokeng and Kgatla are found. The northern Sotho included the Pedi and amalgamation of smaller groups united to become the southern Sotho group or the Basutho. Other smaller language groups such as the Venda, Lemba and Tshonga Shangana transpired outside these major entities but as time progressed they were, however to lesser or greater extent influenced and absorbed by neighbouring groups.

#### **4.1.3 Pastoralism and the last 2000 years**

Until 2000 years ago, hunter-gatherer communities traded, exchanged goods, encountered and interacted with other hunter-gatherer communities. From about 2000 years ago the social dynamics of the Southern African landscape started changing with the immigration of two 'other' groups of people, different in physique, political, economic and social systems, beliefs and rituals. One of these groups, the Khoekhoe pastoralists or herders entered Southern Africa with domestic animals, namely fat-tailed sheep and goats, travelling through the south towards the coast. They also introduced thin-walled pottery common in the interior and along the coastal regions of Southern Africa. Their economic systems were directed by the accumulation of wealth in domestic stock numbers and their political make-up was more hierarchical than that of the hunter-gatherers.

#### **4.1.4 Historical and Colonial Times and Recent History**

The Historical period in Southern Africa encompass the course of Europe's discovery of South Africa and the spreading of European settlements along the East Coast and subsequently into the interior. In addition, the formation stages of this period are marked by the large scale movements of various Bantu-speaking groups in the interior of South Africa, which profoundly influenced the course of European settlement. Finally, the final retreat of the San and Khoekhoen groups into their present-day living areas also occurred in the Historical period in Southern Africa.

#### **4.2 Greater Tshwane: Specific Themes.**

The cultural landscape of the Gauteng area encompasses a period of time that spans millions of years, covering human cultural development from the Stone Ages up to recent times. It depicts the interaction between the first humans and their adaptation and utilization to the environment, the migration of people, technological advances, warfare and contact and conflict. Contained in its archaeology are traces of conquests by Bantu-speakers, Europeans and British imperialism encompassing the struggle for land, resources and political power.

##### **4.2.1 The Earlier and Middle Stone Ages**

The Highveld areas of Gauteng were inhabited by humans since the Earlier Stone Age (ESA) times and stone tools dating to this period, typically found in the vicinity of watercourses, are abundantly scattered in

the landscape. A significant ESA site has been documented on the farm Kaalfontein (366JR) near the Willem Prinsloo Agricultural Museum where an Earlier Stone Age habitation site occurs about 1m sub-surface. The site yielded some of the oldest and largest Stone Age implements found in South Africa. The Middle Stone Age (MSA) marked the occupation of formerly unoccupied areas on the Highveld near water sources and tools belonging to this period mostly occur in the open or in erosion dongas. Later Stone Age (LSA) people displayed advanced technologies and therefore occupied larger and more diverse environments. Most LSA sites are found in association with rock shelters and caves with material found across the Magaliesberg, to the north and east and scattered throughout Pretoria's surroundings.

#### **4.2.2 The Iron Age / Farmer Period**

The beginnings of the Iron Age (Farmer Period) in Southern Africa are associated with the arrival of a new Bantu speaking population group at around the third century AD. These newcomers introduced a new way of life into areas that were occupied by Later Stone Age hunter-gatherers and Khoekhoe herders. Distinctive features of the Iron Age are a settled village life, food production (agriculture and animal husbandry), metallurgy (the mining, smelting and working of iron, copper and gold) and the manufacture of pottery. Iron Age people moved into Southern Africa by c. AD 200, entering the area either by moving down the coastal plains, or by using a more central route. From the coast they followed the various rivers inland. Being cultivators, they preferred rich alluvial soils. Iron Age occupation of the larger Highveld area seems to have taken place on a significant scale.

Because of their specific technology and economy, Iron Age people preferred to settle on the alluvial soils near rivers for agricultural purposes and other resources. Remains of Early Iron Age occupation on the Highveld is scarce, with isolated sites occurring in the Magaliesberg, e.g. at Broederstroom. Large scale occupation of the larger Gauteng area by Bantu speaking farming communities occurred only in the second millennium AD. The 16<sup>th</sup> century was marked by a warmer and wetter climate, providing conditions favourable for Later Iron Age (LIA) farmer occupation in areas in the Witwatersrand, the Free State and the Mpumalanga escarpment. This, in turn resulted in increased food production with expanding populations on the central Highveld by the 19<sup>th</sup> century. Due to ever expanding territories and resulting conflict situations these Later Iron Age farmers preferred protective mountain slopes close to areas fit for cattle grazing. A number of Later Iron Age stone-walled archaeological sites, conventionally associated with Tswana and Ndebele speakers occur around Pretoria.

#### **4.2.3 Later History and Colonial Period**

Pretoria was founded in 1855 by Marthinus Pretorius, leader of the Voortrekkers, who named it after his father Andries Pretorius. The elder Pretorius had become a national hero of the Voortrekkers after his victory over the Zulus in the Battle of Blood River. It became the capital of the South African Republic (ZAR) on 1 May 1860. The founding of Pretoria as the capital of the South African Republic can be seen as marking the end of the Boers' settlement movements of the Great Trek. For centuries the area east of Pretoria proved to be ideal farmland because of its water richness and the first white settlers trekked into this area during the early part of the 19th century. Specifically Lucas Bronkhorst and the Erasmus brothers occupied stretches of land surrounding the area that was later to become Pretoria. The first farms in the areas were registered at around 1850 and from the onset farmers practiced mixed farming. Most farmers in the region had at least two farms: a Highveld (summer) and a Bushveld (winter) farm. The farmers would move their cattle and other animals between winter and summer grazing; a practise that later manifested in place names in the area such as Rust de Winter and Winterfelt.

#### 4.2.4 Burial Sites / Human Remains

Human remains and burials are commonly found close to archaeological sites; they may be found in "lost" graveyards, or occur sporadically anywhere as a result of prehistoric activity, victims of conflict or crime. It is often difficult to detect the presence of archaeological human remains on the landscape as these burials, in most cases, are not marked at the surface. Human remains are usually observed when they are exposed through erosion. In some instances packed stones or rocks may indicate the presence of informal pre-colonial burials. If any human bones are found during the course of construction work then they should be reported to an archaeologist and work in the immediate vicinity should cease until the appropriate actions have been carried out by the archaeologist. Where human remains are part of a burial they would need to be exhumed under a permit from either SAHRA (for pre-colonial burials as well as burials later than about AD 1500).

### 5 RESULTS: ARCHAEOLOGICAL SURVEY

---

The history and archaeology of the greater Tshwane area is well known and the landscape around Pretoria is rich in archaeology of the Stone Ages, Iron Age Farmer Period, Historical Period as well as legacies of warfare. However, the proposed Lotus Gardens X17 Retail Centre Development area is situated in environments that have been transformed and degraded as a result of urbanisation as well as natural elements. No archaeological objects or sites, or features of heritage potential were noted during the site survey of the development footprint and it might be assumed that these areas have largely been sterilized of heritage remains, especially those dating to prehistorical times.

#### 5.1 The Stone Age

In this area, Stone Age material generally occurs along drainage lines and exposed surfaces in the landscape. No Stone Age material was documented along the proposed Lotus Gardens X17 Retail Centre Development Project footprint during the site survey.

#### 5.2 The Iron Age Farmer Period

A frontier zone between the north and the south, the Tshwane landscape is rich in precolonial Iron Age Farmer Period remnants. No Farmer Period occurrences were noted in the proposed Lotus Gardens X17 Retail Centre Development Project footprint area.

#### 5.3 Historical / Colonial Period and recent times

In Colonial times, Gauteng was a conflict region between local and Imperial forces and traces of Colonial developments and warfare occur across the landscape. However, the site inspection produced no Colonial period remnants. In terms of the built environment, the area has no significance, as there are no old buildings, structures, or features, old equipment, public memorial or monuments in the footprint areas.

#### 5.4 Graves

In the rural areas of the Gauteng Province graves and cemeteries often occur within settlements or around homesteads but they are also randomly scattered around archaeological and historical settlements. The probability of additional and informal human burials encountered during development should thus not be excluded. Should any unmarked human burials/remains be found during the course of construction, work in the immediate vicinity should cease and the find must immediately be reported to the archaeologist, or the South African Heritage Resources Agency (SAHRA). Under no circumstances may burials be disturbed or removed until such time as necessary statutory procedures required for grave relocation have been met.

## 6 RESULTS: STATEMENT OF SIGNIFICANCE AND IMPACT RATING

---

### 6.1 Potential Impacts and Significance Ratings<sup>2</sup>

The following section provides a background to the identification and assessment of possible impacts and alternatives, as well as a range of risk situations and scenarios commonly associated with heritage resources management. A guideline for the rating of impacts and recommendation of management actions for areas of heritage potential within the study area is supplied in Section 10.2 of the Addendum.

#### 6.1.1 General assessment of impacts on resources

Generally, the value and significance of archaeological and other heritage sites might be impacted on by any activity that would result immediately or in the future in the destruction, damage, excavation, alteration, removal or collection from its original position, any archaeological material or object (as indicated in the National Heritage Resources Act (No 25 of 1999)). Thus, the destructive impacts that are possible in terms of heritage resources would tend to be direct, once-off events occurring during the initial construction period. However, in the long run, the proximity of operations in any given area could result in secondary indirect impacts. The EIA process therefore specifies impact assessment criteria which can be utilised from the perspective of a heritage specialist study which elucidates the overall extent of impacts.

#### 6.1.2 Direct impact rating

**Direct or primary effects** on heritage resources occur at the same time and in the same space as the activity, e.g. loss of historical fabric through demolition work. **Indirect effects or secondary effects** on heritage resources occur later in time or at a different place from the causal activity, or as a result of a complex pathway, e.g. restriction of access to a heritage resource resulting in the gradual erosion of its significance, which is dependent on ritual patterns of access (refer to Section 10.3 in the Addendum for an outline of the relationship between the significance of a heritage context, the intensity of development and the significance of heritage impacts to be expected).

No heritage receptors were found in the project area as a result of the general degraded state of the site and no potential impact to heritage resources is foreseen.

### 6.2 Evaluation Impacts

Previous studies conducted in the greater Tshwane region suggest a rich and diverse archaeological landscape but the surroundings of the proposed for the Lotus Gardens X17 Retail Centre Development Project have been transformed by urbanisation. Cognisance should nonetheless be taken of previously undetected archaeological material that might be present in sub-surface deposits.

***No heritage resources have been documented in the proposed Lotus Gardens X17 Retail Centre Development footprint areas. It is the opinion of the author of this Archaeological Impact Assessment Report that the proposed Lotus Gardens X17 Retail Centre Development in Lotus Gardens will have no impact on archaeological resources, the built environment, the cultural landscape or human burials. The project should be allowed to proceed from a culture resources management perspective on the condition that that the relevant Heritage Resources authority approve these findings and provided that no subsurface heritage remains are encountered during construction.***

---

<sup>2</sup> Based on: Winter, S. & Baumann, N. 2005. *Guideline for involving heritage specialists in EIA processes: Edition 1.*

### 6.2.1 Archaeology

No archaeological objects or sites were noted in the proposed project footprint area. No impact on archaeological material is anticipated.

### 6.2.2 Built Environment

The study has not identified any buildings or structures which will be impacted by the proposed project. For the rest of the project area, the general landscape has limited significance in terms of the built environment as the area comprises newly established residences and townlands. No apparent old buildings, structures, or features, old equipment, public memorials or monuments are present in the direct surroundings. No impact on built environment sites is therefore anticipated.

### 6.2.3 Cultural Landscape

Even though the larger Pretoria area comprises a rich cultural landscape, the proposed project area has been transformed and degraded by urbanisation and development. Further away from the project area, the landscape is typical of the urban and suburban zones of Gauteng with the Magaliesberg Mountain Range to the north and undulating hills to the south with flatter built-up plains in-between. This landscape stretches over many kilometres and the proposed project is unlikely to result in a significant impact on the landscape.

### 6.2.4 Graves / Human Burials Sites

No visible human burial sites or possible burial sites were noted in the study area. In the rural areas of Gauteng graves and informal cemeteries sometime occur within settlements or around farmsteads but they are also randomly scattered around archaeological and historical settlements. The probability of additional and informal human burials encountered during development should thus not be excluded. In addition, human remains and burials are commonly found close to archaeological sites; they may be found in "lost" graveyards, or occur sporadically anywhere as a result of prehistoric activity, victims of conflict or crime. It is often difficult to detect the presence of archaeological human remains on the landscape as these burials, in most cases, are not marked at the surface. Human remains are usually observed when they are exposed through erosion. In some instances packed stones or rocks may indicate the presence of informal pre-colonial burials. If any human bones are found during the course of construction work then they should be reported to an archaeologist and work in the immediate vicinity should cease until the appropriate actions have been carried out by the archaeologist. Where human remains are part of a burial they would need to be exhumed under a permit from either SAHRA (for pre-colonial burials as well as burials later than about AD 1500). Should any unmarked human burials/remains be found during the course of construction, work in the immediate vicinity should cease and the find must immediately be reported to the archaeologist, or the South African Heritage Resources Agency (SAHRA). Under no circumstances may burials be disturbed or removed until such time as necessary statutory procedures required for grave relocation have been met.

### 6.3 Management actions

Recommendations for relevant heritage resources management actions are vital to the conservation of heritage resources. A general guideline for recommended management actions is included in Section 10.4 of the Addendum. The following management measures would be required during implementation of the proposed Lotus Gardens X17 Retail Centre Development.

**OBJECTIVE:** prevent unnecessary disturbance and/or destruction of previously undetected heritage receptors.

*No specific action in terms of heritage site mitigation is required for the proposed Lotus Gardens X17 Retail Centre Development. However, the following general procedure is required for the project area:*

<b>PROJECT COMPONENT/S</b>	All phases of construction and operation.		
<b>POTENTIAL IMPACT</b>	Damage/destruction of sites.		
<b>ACTIVITY RISK/SOURCE</b>	Digging foundations and trenches into sensitive deposits that are not visible at the surface.		
<b>MITIGATION: TARGET/OBJECTIVE</b>	To locate previously undetected heritage remains / graves as soon as possible after disturbance so as to maximize the chances of successful rescue/mitigation work.		
<b>MITIGATION: ACTION/CONTROL</b>	<b>RESPONSIBILITY</b>	<b>TIMEFRAME</b>	
Fixed Mitigation Procedure ( <b>required</b> )			
<b>Site Monitoring:</b> Regular examination of trenches and excavations.	ECO	Monitor as frequently as practically possible.	
<b>PERFORMANCE INDICATOR</b>	Archaeological sites are discovered and mitigated with the minimum amount of unnecessary disturbance.		
<b>MONITORING</b>	Successful location of sites by person/s monitoring.		

## 7 RECOMMENDATIONS

---

The history and archaeology of the greater Tshwane area is well known and the landscape around Pretoria is rich in archaeology of the Stone Ages, Iron Age Farmer Period, Historical Period as well as legacies of warfare. However, the proposed Lotus Gardens X17 Retail Centre Development area is situated in environments that have been transformed and degraded as a result of urbanisation as well as natural elements. No archaeological objects or sites, or features of heritage potential were noted during the site survey of the development footprint and it might be assumed that these areas have largely been sterilized of heritage remains, especially those dating to prehistorical times. The following general recommendations are made based on general observations in the proposed Lotus Gardens X17 Retail Centre Development area:

- A Palaeontological Impact Assessment should be considered where bedrock is to be impacted and, should fossil remains such as fossil fish, reptiles or petrified wood be exposed during construction, these objects should carefully safeguarded and the relevant heritage resources authority (SAHRA) should be notified immediately so that the appropriate action can be taken by a professional palaeontologist.
- Considering the localised nature of heritage remains, the general monitoring of the development progress by an ECO or by the heritage specialist is recommended for all stages of the project. Should any subsurface palaeontological, archaeological or historical material, or burials be exposed during construction activities, all activities should be suspended and the archaeological specialist should be notified immediately
- It is essential that cognisance be taken of the larger archaeological landscape of the area in order to avoid the destruction of previously undetected heritage sites. It should be stated that it is likely that further undetected archaeological remains might occur elsewhere in the Study Area along water sources and drainage lines, fountains and pans would often have attracted human activity in the past. Also, since Stone Age material seems to originate from below present soil surfaces in eroded areas, the larger landscape should be regarded as potentially sensitive in terms of possible subsurface deposits. Burials and historically significant structures dating to the Colonial Period occur on farms in the area and these resources should be avoided during all phases of construction and development, including the operational phases of the development.



## 8 GENERAL COMMENTS AND CONDITIONS

---

This AIA report serves to confirm the extent and significance of the heritage landscape of the proposed Lotus Gardens X17 Retail Centre Development area. The larger heritage horizon encompasses rich and diverse archaeological landscapes and cognisance should be taken of heritage resources and archaeological material that might be present in surface and sub-surface deposits. If, during construction, any possible archaeological material culture discoveries are made, the operations must be stopped and a qualified archaeologist be contacted for an assessment of the find. Such material culture might include:

- Formal Earlier Stone Age stone tools.
- Formal MSA stone tools.
- Formal LSA stone tools.
- Potsherds
- Iron objects.
- Beads made from ostrich eggshell and glass.
- Ash middens and cattle dung deposits and accumulations.
- Faunal remains.
- Human remains/graves.
- Stone walling or any sub-surface structures.
- Historical glass, tin or ceramics.
- Fossils.

If such site(s) were to be encountered or impacted by any proposed developments, recommendations contained in this report, as well as endorsement of mitigation measures as set out by SAHRA, the National Resources Act and the CRM section of ASAPA will be required.

It must be emphasised that the conclusions and recommendations expressed in this archaeological heritage sensitivity investigation are based on the visibility of archaeological sites/features and may not therefore, represent the area's complete archaeological legacy. Many sites/features may be covered by soil and vegetation and might only be located during sub-surface investigations. If subsurface archaeological deposits, artefacts or skeletal material were to be recovered in the area during construction activities, all activities should be suspended and the archaeological specialist should be notified immediately (**cf. NHRA (Act No. 25 of 1999), Section 36 (6)**). It must also be clear that this Archaeological Specialist Reports will be assessed by the relevant heritage resources authority (SAHRA).

## 9 BIBLIOGRAPHY

---

- Acocks, J.P.H. 1988. Veld types of South Africa (3<sup>rd</sup> edition). *Memoirs of the Botanical Survey of South Africa* 57: 1-146
- Aitken, D. W. 1999. The British defence of the Pretoria - Delagoa Bay railway. *Military History Journal*. Vol 11 No 3/4 - October
- Bergh, J.S. 1999. *Geskiedenisatlas van Suid-Afrika: die vier noordelike provinsies*. Pretoria: J.L. van Schaik.
- Breul, H. 1948. The Earlier Stone Age or Old Palaeolithic Industries in the Vaal River Basin. *Archaeological Survey*. *Archaeological Series No. VI:8-18*.
- Deacon, H.J. 1970. The Acheulian Occupation at Amanzi Springs Uitenhage District, Cape Province. Cape provincial museums at the Albany Museum
- Deacon, J. 1996. *Archaeology for Planners, Developers and Local Authorities*. National Monuments Council. Publication no. P021E.
- Deacon, J. 1997. Report: Workshop on Standards for the Assessment of Significance and Research Priorities for Contract Archaeology. In: Newsletter No 49, Sept 1998. Association for Southern African Archaeologists.
- Deacon, H.J. & Deacon, J. 1999. *Human Beginnings in South Africa*. Cape Town: David Philip.
- Esterhuysen, A., 2007. The Earlier Stone Age. In Bonner, P., Esterhuysen, A., Jenkins, T. (eds.): *A Search for Origins: Science, History and South Africa's 'Cradle of Humankind'*. Johannesburg: Wits University Press. Pg 110 -121.
- Evers, T.M. 1988. The recognition of Groups in the Iron Age of Southern Africa. PhD thesis. Johannesburg: University of the Witwatersrand.
- Gess, W.H.R. 1969. Excavations of a Pleistocene bone deposit at Aloes near Port Elizabeth. *South African Archaeological Bulletin* 24:31-32.
- Hall, M. 1987. *The Changing Past: Farmers, Kings & Traders in Southern Africa 200 – 1860* Cape Town, Johannesburg: David Philip
- Hamilton, C. (Ed.) 1995. *The Mfecane Aftermath*. Johannesburg: Wits U.P.
- Huffman, T.N. 2007. *Handbook to the Iron Age*. Pietermaritzburg: University of Kwazulu-Natal Press
- Human Tissue Act and Ordinance 7 of 1925, Government Gazette, Cape Town*

Maggs, T.M.O. 1976. Iron Age Communities of the Southern Highveld. Pietermaritzburg: University of Natal Press.

Mason, R.J. 1962. The Prehistory of the Transvaal. Johannesburg: University of the Witwatersrand Press.

Mitchell, P. 2002. The Archaeology of Southern Africa. Cambridge Africa Collection. Cambridge: Cambridge University Press.

*National Resource Act No.25 of 1999, Government Gazette, Cape Town*

*SAHRA, 2005. Minimum Standards for the Archaeological and the Palaeontological Components of Impact Assessment Reports, Draft version 1.4.*

Raper, P.E. 2004. South African place names. Johannesburg: Jonathan Ball Publishers

Swanepoel, N. et al (Eds.) 2008. Five hundred years rediscovered. Johannesburg: Wits University Press

Thompson, E. & Marean, C. W. 2008. The Mossel Bay lithic variant: 120 years of Middle Stone Age Research from Cape St. Blaize Cave to Pinnacle Point. South Africa Archaeological Society Goodwin Series, Vol. 10: 90-104

Van Vollenhoven, A. & Van Den Bos, J. 1997. 'n Kultuurhulpbronstudie van die Britse blokhuisstelsel van die Tweede Anglo-Boere-oorlog (1899-1902) in die voormalige Transvaal (ZAR). Pretoria: Raad vir Geesteswetenskaplike Navorsing.

Van Warmelo, N.J. 1935. A Preliminary Survey of the Bantu Tribes of South Africa. Ethnographic Publications No. 5. Pretoria: Government Printer.

<http://csg.dla.gov.za/index.html> Accessed 2015-05-26

**10 ADDENDUM 1: CONVENTIONS USED TO ASSESS THE SIGNIFICANCE OF HERITAGE**

**10.1 Site Significance Matrix**

According to the NHRA, Section 2(vi) the **significance** of heritage sites and artefacts is determined by its aesthetic, architectural, historical, scientific, social, spiritual, linguistic or technical value in relation to the uniqueness, condition of preservation and research potential. It must be kept in mind that the various aspects are not mutually exclusive, and that the evaluation of any site is done with reference to any number of these. The following matrix is used for assessing the significance of each identified site/feature.

2. SITE EVALUATION			
2.1 Heritage Value (NHRA, section 2 [3])	High	Medium	Low
It has importance to the community or pattern of South Africa’s history or pre-colonial history.			
It possesses unique, uncommon, rare or endangered aspects of South Africa’s natural or cultural heritage.			
It has potential to yield information that will contribute to an understanding of South Africa’s natural and cultural heritage.			
It is of importance in demonstrating the principle characteristics of a particular class of South Africa’s natural or cultural places or objects.			
It has importance in exhibiting particular aesthetic characteristics valued by a particular community or cultural group.			
It has importance in demonstrating a high degree of creative or technical achievement at a particular period.			
It has marked or special association with a particular community or cultural group for social, cultural or spiritual reasons (sense of place).			
It has strong or special association with the life or work of a person, group or organisation of importance in the history of South Africa.			
It has significance through contributing towards the promotion of a local sociocultural identity and can be developed as a tourist destination.			
It has significance relating to the history of slavery in South Africa.			
It has importance to the wider understanding of temporal changes within cultural landscapes, settlement patterns and human occupation.			
2.2 Field Register Rating			
National/Grade 1 [should be registered, retained]			
Provincial/Grade 2 [should be registered, retained]			
Local/Grade 3A [should be registered, mitigation not advised]			
Local/Grade 3B [High significance; mitigation, partly retained]			
Generally Protected A [High/Medium significance, mitigation]			
Generally protected B [Medium significance, to be recorded]			
Generally Protected C [Low significance, no further action]			
2.3 Sphere of Significance	High	Medium	Low
International			
National			
Provincial			
Local			
Specific community			

**10.2 Impact Assessment Criteria**

The following table provides a guideline for the rating of impacts and recommendation of management actions for sites of heritage potential.

**Significance of the heritage resource**

This is a statement of the nature and degree of significance of the heritage resource being affected by the activity. From a heritage management perspective it is useful to distinguish between whether the significance is embedded in the physical fabric or in associations with events or persons or in the experience of a place; i.e. its visual and non-visual qualities. This statement is a primary informant to the nature and degree of significance of an impact and thus needs to be thoroughly considered. Consideration needs to be given to the significance of a heritage resource at different scales (i.e. sitespecific, local, regional, national or international) and the relationship between the heritage resource, its setting and its associations.

**Nature of the impact**

This is an assessment of the nature of the impact of the activity on a heritage resource, with some indication of its positive and/or negative effect/s. It is strongly informed by the statement of resource significance. In other words, the nature of the impact may be historical, aesthetic, social, scientific, linguistic or architectural, intrinsic, associational or contextual (visual or non-visual). In many cases, the nature of the impact will include more than one value.

**Extent**

Here it should be indicated whether the impact will be experienced:

- On a site scale, i.e. extend only as far as the activity;
- Within the immediate context of a heritage resource;
- On a local scale, e.g. town or suburb
- On a metropolitan or regional scale; or
- On a national/international scale.

**Duration**

Here it should be indicated whether the lifespan of the impact will be:

- Short term, (needs to be defined in context)
- Medium term, (needs to be defined in context)
- Long term where the impact will persist indefinitely, possibly beyond the operational life of the activity, either because of natural processes or by human intervention; or
- Permanent where mitigation either by natural process or by human intervention will not occur in such a way or in such a time span that the impact can be considered transient.

Of relevance to the duration of an impact are the following considerations:

- Reversibility of the impact; and
- Renewability of the heritage resource.

**Intensity**

Here it should be established whether the impact should be indicated as:

- Low, where the impact affects the resource in such a way that its heritage value is not affected;
- Medium, where the affected resource is altered but its heritage value continues to exist albeit in a modified way; and
- High, where heritage value is altered to the extent that it will temporarily or permanently be damaged or destroyed.

**Probability**

This should describe the likelihood of the impact actually occurring indicated as:

- Improbable, where the possibility of the impact to materialize is very low either because of design or historic experience;
- Probable, where there is a distinct possibility that the impact will occur;
- Highly probable, where it is most likely that the impact will occur; or
- Definite, where the impact will definitely occur regardless of any mitigation measures

**Confidence**

This should relate to the level of confidence that the specialist has in establishing the nature and degree of impacts. It relates to the level and reliability of information, the nature and degree of consultation with I&AP's and the dynamic of the broader socio-political context.

- High, where the information is comprehensive and accurate, where there has been a high degree of consultation and the socio-political context is relatively stable.

- Medium, where the information is sufficient but is based mainly on secondary sources, where there has been a limited targeted consultation and socio-political context is fluid.
- Low, where the information is poor, a high degree of contestation is evident and there is a state of socio-political flux.

**Impact Significance**

The significance of impacts can be determined through a synthesis of the aspects produced in terms of the nature and degree of heritage significance and the nature, duration, intensity, extent, probability and confidence of impacts and can be described as:

- Low, where it would have a negligible effect on heritage and on the decision
- Medium, where it would have a moderate effect on heritage and should influence the decision.
- High, where it would have, or there would be a high risk of, a big effect on heritage. Impacts of high significance should have a major influence on the decision;
- Very high, where it would have, or there would be high risk of, an irreversible and possibly irreplaceable negative impact on heritage. Impacts of very high significance should be a central factor in decision-making.

**10.3 Direct Impact Assessment Criteria**

The following table provides an outline of the relationship between the significance of a heritage context, the intensity of development and the significance of heritage impacts to be expected

HERITAGE CONTEXT	TYPE OF DEVELOPMENT			
	CATEGORY A	CATEGORY B	CATEGORY C	CATEGORY D
<b>CONTEXT 1</b> High heritage Value	Moderate heritage impact expected	High heritage impact expected	Very high heritage impact expected	Very high heritage impact expected
<b>CONTEXT 2</b> Medium to high heritage value	Minimal heritage impact expected	Moderate heritage impact expected	High heritage impact expected	Very high heritage impact expected
<b>CONTEXT 3</b> Medium to low heritage value	Little or no heritage impact expected	Minimal heritage impact expected	Moderate heritage impact expected	High heritage impact expected
<b>CONTEXT 4</b> Low to no heritage value	Little or no heritage impact expected	Little or no heritage impact expected	Minimal heritage value expected	Moderate heritage impact expected

**NOTE: A DEFAULT "LITTLE OR NO HERITAGE IMPACT EXPECTED" VALUE APPLIES WHERE A HERITAGE RESOURCE OCCURS OUTSIDE THE IMPACT ZONE OF THE DEVELOPMENT.**

HERITAGE CONTEXTS	CATEGORIES OF DEVELOPMENT
<p><b>Context 1:</b> Of high intrinsic, associational and contextual heritage value within a national, provincial and local context, i.e. formally declared or potential Grade 1, 2 or 3A heritage resources</p> <p><b>Context 2:</b> Of moderate to high intrinsic, associational and contextual value within a local context, i.e. potential Grade 3B heritage resources.</p> <p><b>Context 3:</b> Of medium to low intrinsic, associational or contextual heritage value within a national, provincial and local context, i.e. potential Grade 3C heritage resources</p> <p><b>Context 4:</b> Of little or no intrinsic, associational or contextual heritage value due to disturbed, degraded conditions or extent of irreversible damage.</p>	<p><b>Category A: Minimal intensity development</b></p> <ul style="list-style-type: none"> <li>- No rezoning involved; within existing use rights.</li> <li>- No subdivision involved.</li> <li>- Upgrading of existing infrastructure within existing envelopes</li> <li>- Minor internal changes to existing structures</li> <li>- New building footprints limited to less than 1000m2.</li> </ul> <p><b>Category B: Low-key intensity development</b></p> <ul style="list-style-type: none"> <li>- Spot rezoning with no change to overall zoning of a site.</li> <li>- Linear development less than 100m</li> <li>- Building footprints between 1000m2-2000m2</li> <li>- Minor changes to external envelop of existing structures (less than 25%)</li> <li>- Minor changes in relation to bulk and height of immediately adjacent structures (less than 25%).</li> </ul> <p><b>Category C: Moderate intensity development</b></p> <ul style="list-style-type: none"> <li>- Rezoning of a site between 5000m2-10 000m2.</li> </ul>

	<ul style="list-style-type: none"> <li>- Linear development between 100m and 300m.</li> <li>- Building footprints between 2000m2 and 5000m2</li> <li>- Substantial changes to external envelop of existing structures (more than 50%)</li> <li>- Substantial increase in bulk and height in relation to immediately adjacent buildings (more than 50%)</li> </ul> <p><b>Category D: High intensity development</b></p> <ul style="list-style-type: none"> <li>- Rezoning of a site in excess of 10 000m2</li> <li>- Linear development in excess of 300m.</li> <li>- Any development changing the character of a site exceeding 5000m2 or involving the subdivision of a site into three or more erven.</li> <li>- Substantial increase in bulk and height in relation to immediately adjacent buildings (more than 100%)</li> </ul>
--	--

### 10.4 Management and Mitigation Actions

The following table provides a guideline of relevant heritage resources management actions is vital to the conservation of heritage resources.

<p><b>No further action / Monitoring</b></p> <p>Where no heritage resources have been documented, heritage resources occur well outside the impact zone of any development or the primary context of the surroundings at a development footprint has been largely destroyed or altered, no further immediate action is required. Site monitoring during development, by an ECO or the heritage specialist are often added to this recommendation in order to ensure that no undetected heritage\ remains are destroyed.</p> <p><b>Avoidance</b></p> <p>This is appropriate where any type of development occurs within a formally protected or significant or sensitive heritage context and is likely to have a high negative impact. Mitigation is not acceptable or not possible. This measure often includes the change / alteration of development planning and therefore impact zones in order not to impact on resources.</p> <p><b>Mitigation</b></p> <p>This is appropriate where development occurs in a context of heritage significance and where the impact is such that it can be mitigated to a degree of medium to low significance, e.g. the high to medium impact of a development on an archaeological site could be mitigated through sampling/excavation of the remains. Not all negative impacts can be mitigated.</p> <p><b>Compensation</b></p> <p>Compensation is generally not an appropriate heritage management action. The main function of management actions should be to conserve the resource for the benefit of future generations. Once lost it cannot be renewed. The circumstances around the potential public or heritage benefits would need to be exceptional to warrant this type of action, especially in the case of where the impact was high.</p> <p><b>Rehabilitation</b></p> <p>Rehabilitation is considered in heritage management terms as a intervention typically involving the adding of a new heritage layer to enable a new sustainable use. It is not appropriate when the process necessitates the removal of previous historical layers, i.e. restoration of a building or place to the previous state/period. It is an appropriate heritage management action in the following cases:</p> <ul style="list-style-type: none"> <li>- The heritage resource is degraded or in the process of degradation and would benefit from rehabilitation.</li> <li>- Where rehabilitation implies appropriate conservation interventions, i.e. adaptive reuse, repair and maintenance, consolidation and minimal loss of historical fabric.</li> <li>- Where the rehabilitation process will not result in a negative impact on the intrinsic value of the resource.</li> </ul> <p><b>Enhancement</b></p> <p>Enhancement is appropriate where the overall heritage significance and its public appreciation value are improved. It does not imply creation of a condition that might never have occurred during the evolution of a place, e.g. the tendency to sanitize the past. This management action might result from the removal of previous layers where these layers are culturally of low significance and detract from the significance of the resource. It would be appropriate in a range of heritage contexts and applicable to a range of resources. In the case of formally protected or significant resources, appropriate enhancement action should be encouraged. Care should, however, be taken to ensure that the process does not have a negative impact on the character and context of the resource. It would thus have to be carefully monitored</p>
---