

**SCREENING REPORT FOR AN ENVIRONMENTAL AUTHORIZATION AS
REQUIRED BY THE 2014 EIA REGULATIONS – PROPOSED SITE
ENVIRONMENTAL SENSITIVITY**

EIA Reference number: To be obtained.

Project name: Avec Le Terre

Project title: Portion 11 of Farm 1426, Paarl

Date screening report generated: 26/05/2022 11:28:34

Applicant: To confirm.

Compiler: Doug Jeffery Environmental Consultants

Compiler signature:


.....

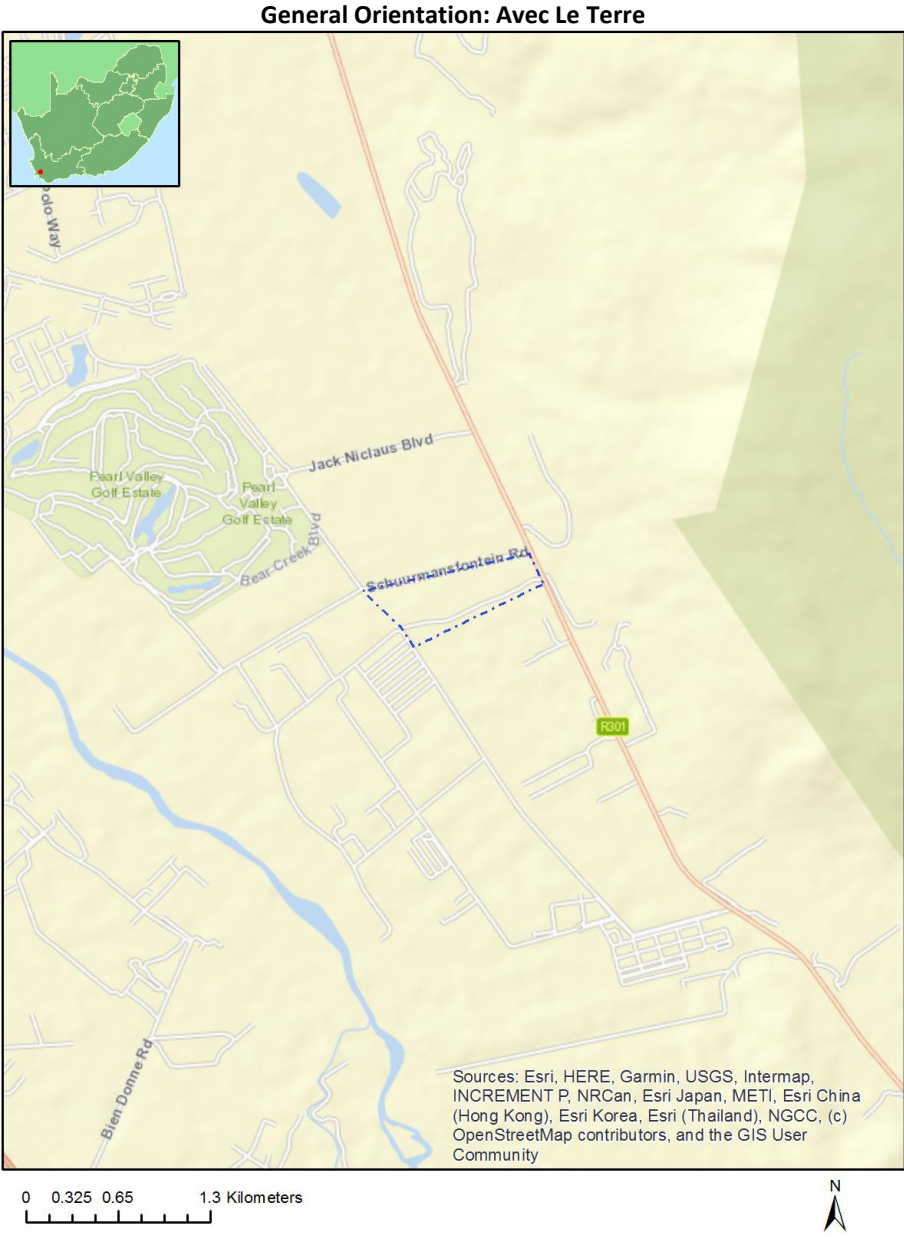
Application Category: Transformation of land | Indigenous vegetation

Table of Contents

Proposed Project Location	3
Orientation map 1: General location	3
Map of proposed site and relevant area(s)	4
Cadastral details of the proposed site	4
Wind and Solar developments with an approved Environmental Authorisation or applications under consideration within 30 km of the proposed area	4
Environmental Management Frameworks relevant to the application	4
Environmental screening results and assessment outcomes	5
Relevant development incentives, restrictions, exclusions or prohibitions	5
Map indicating proposed development footprint within applicable development incentive, restriction, exclusion or prohibition zones	6
Proposed Development Area Environmental Sensitivity	6
Specialist assessments identified	7
Results of the environmental sensitivity of the proposed area	9
MAP OF RELATIVE AGRICULTURE THEME SENSITIVITY	9
MAP OF RELATIVE ANIMAL SPECIES THEME SENSITIVITY	10
MAP OF RELATIVE AQUATIC BIODIVERSITY THEME SENSITIVITY	11
MAP OF RELATIVE ARCHAEOLOGICAL AND CULTURAL HERITAGE THEME SENSITIVITY	12
MAP OF RELATIVE CIVIL AVIATION THEME SENSITIVITY	13
MAP OF RELATIVE DEFENCE THEME SENSITIVITY	14
MAP OF RELATIVE PALEONTOLOGY THEME SENSITIVITY	15
MAP OF RELATIVE PLANT SPECIES THEME SENSITIVITY	16
MAP OF RELATIVE TERRESTRIAL BIODIVERSITY THEME SENSITIVITY	19

Proposed Project Location

Orientation map 1: General location



Map of proposed site and relevant area(s)



Cadastral details of the proposed site

Property details:

No	Farm Name	Farm/ Erf No	Portion	Latitude	Longitude	Property Type
1		1426	0	33°50'2.11S	19°0'40.06E	Farm
2		1426	11	33°49'36.95S	18°59'57.35E	Farm Portion

Development footprint¹ vertices:
No development footprint(s) specified.

Wind and Solar developments with an approved Environmental Authorisation or applications under consideration within 30 km of the proposed area

No nearby wind or solar developments found.

Environmental Management Frameworks relevant to the application

No intersections with EMF areas found.

¹ “development footprint”, means the area within the site on which the development will take place and includes all ancillary developments for example roads, power lines, boundary walls, paving etc. which require vegetation clearance or which will be disturbed and for which the application has been submitted.

Environmental screening results and assessment outcomes

The following sections contain a summary of any development incentives, restrictions, exclusions or prohibitions that apply to the proposed development site as well as the most environmental sensitive features on the site based on the site sensitivity screening results for the application classification that was selected. The application classification selected for this report is:

Transformation of land | Indigenous vegetation.

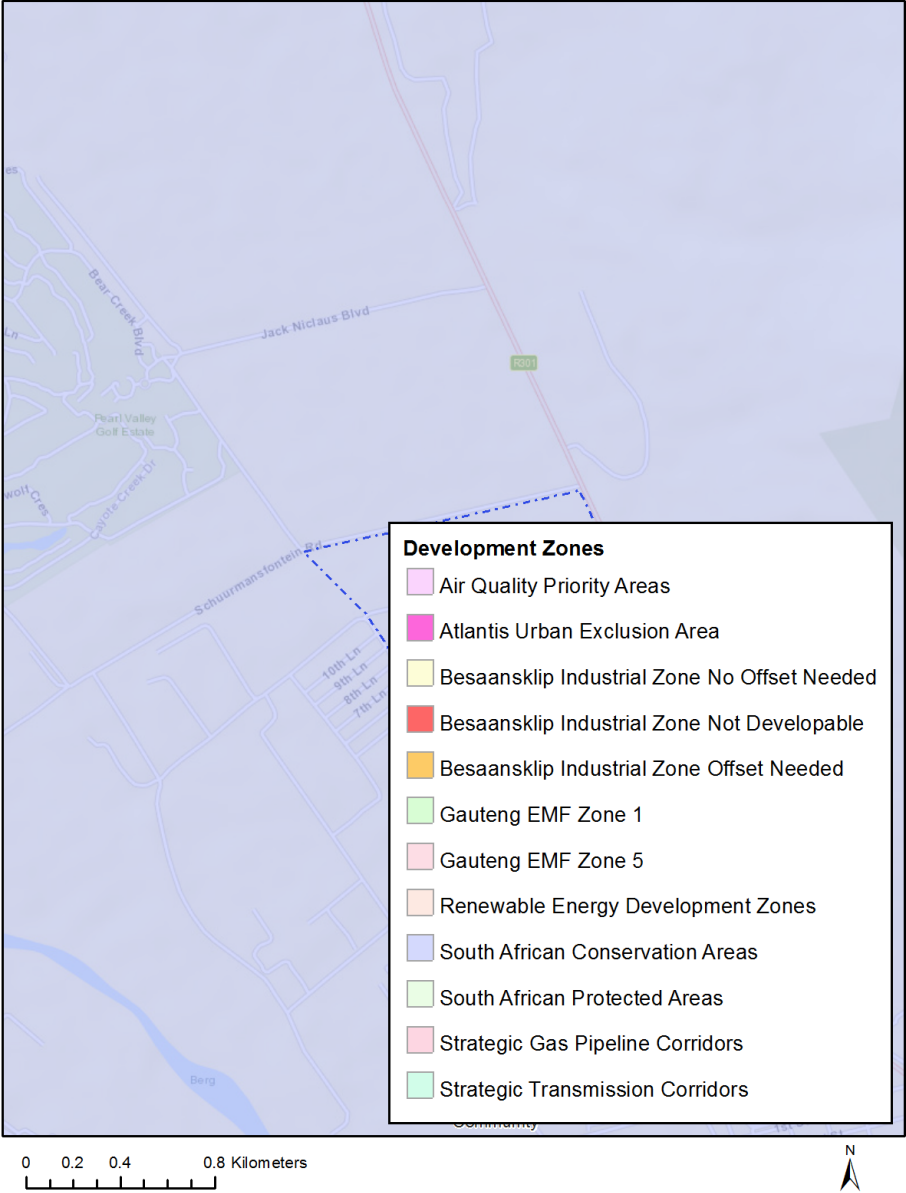
Relevant development incentives, restrictions, exclusions or prohibitions

The following development incentives, restrictions, exclusions or prohibitions and their implications that apply to this site are indicated below.

Incentive, restriction or prohibition	Implication
Strategic Transmission Corridor-Central corridor	https://screening.environment.gov.za/ScreeningDownloads/DevelopmentZones/Combined_EGI.pdf
Strategic Gas Pipeline Corridors -Phase 1a & 1b: Saldanha to Ankerlig and Saldanha to Mossel Bay	https://screening.environment.gov.za/ScreeningDownloads/DevelopmentZones/Combined_GAS.pdf
South African Conservation Areas	https://screening.environment.gov.za/ScreeningDownloads/DevelopmentZones/SACAD_OR_2021_Q4_Metadata.pdf

Map indicating proposed development footprint within applicable development incentive, restriction, exclusion or prohibition zones

Project Location: Avec Le Terre



Proposed Development Area Environmental Sensitivity

The following summary of the development site environmental sensitivities is identified. Only the highest environmental sensitivity is indicated. The footprint environmental sensitivities for the proposed development footprint as identified, are indicative only and must be verified on site by a suitably qualified person before the specialist assessments identified below can be confirmed.

Theme	Very High sensitivity	High sensitivity	Medium sensitivity	Low sensitivity
Agriculture Theme	X			
Animal Species Theme		X		

Aquatic Biodiversity Theme	X			
Archaeological and Cultural Heritage Theme	X			
Civil Aviation Theme		X		
Defence Theme				X
Paleontology Theme		X		
Plant Species Theme		X		
Terrestrial Biodiversity Theme	X			

Specialist assessments identified

Based on the selected classification, and the environmental sensitivities of the proposed development footprint, the following list of specialist assessments have been identified for inclusion in the assessment report. It is the responsibility of the EAP to confirm this list and to motivate in the assessment report, the reason for not including any of the identified specialist study including the provision of photographic evidence of the site situation.

N o	Specialist assessment	Assessment Protocol
1	Landscape/Visual Impact Assessment	https://screening.environment.gov.za/ScreeningDownloads/AssessmentProtocols/Gazetted_General_Requirement_Assessment_Protocols.pdf
2	Archaeological and Cultural Heritage Impact Assessment	https://screening.environment.gov.za/ScreeningDownloads/AssessmentProtocols/Gazetted_General_Requirement_Assessment_Protocols.pdf
3	Palaeontology Impact Assessment	https://screening.environment.gov.za/ScreeningDownloads/AssessmentProtocols/Gazetted_General_Requirement_Assessment_Protocols.pdf
4	Terrestrial Biodiversity Impact Assessment	https://screening.environment.gov.za/ScreeningDownloads/AssessmentProtocols/Gazetted_Terrestrial_Biodiversity_Assessment_Protocols.pdf
5	Aquatic Biodiversity Impact Assessment	https://screening.environment.gov.za/ScreeningDownloads/AssessmentProtocols/Gazetted_Aquatic_Biodiversity_Assessment_Protocols.pdf
6	Socio-Economic Assessment	https://screening.environment.gov.za/ScreeningDownloads/AssessmentProtocols/Gazetted_General_Requirement_Assessment_Protocols.pdf
7	Plant Species	https://screening.environment.gov.za/ScreeningDownloads/AssessmentProtocols/Gazetted_General_Requirement_Assessment_Protocols.pdf

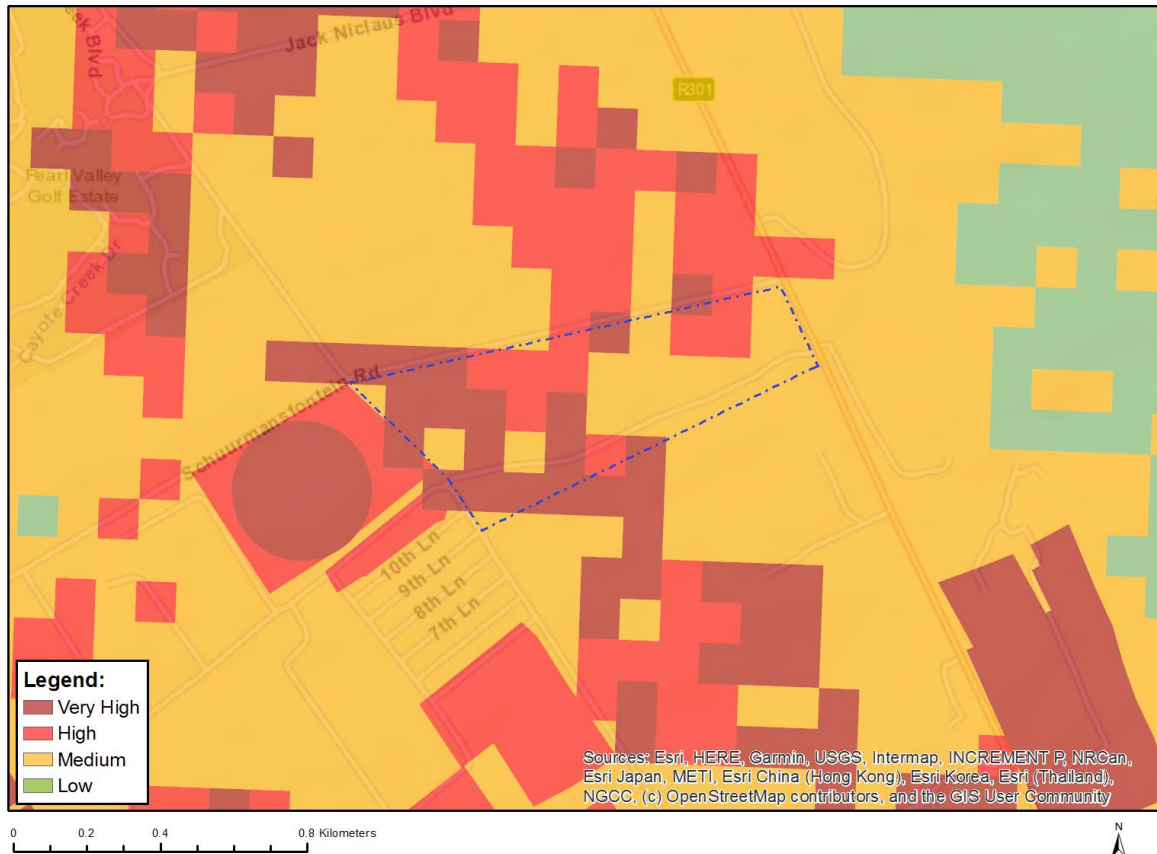
	Assessment	/Gazetted Plant Species Assessment Protocols.pdf
8	Animal Species Assessment	https://screening.environment.gov.za/ScreeningDownloads/AssessmentProtocols/Gazetted Animal Species Assessment Protocols.pdf

OFFICIAL

Results of the environmental sensitivity of the proposed area.

The following section represents the results of the screening for environmental sensitivity of the proposed site for relevant environmental themes associated with the project classification. It is the duty of the EAP to ensure that the environmental themes provided by the screening tool are comprehensive and complete for the project. Refer to the disclaimer.

MAP OF RELATIVE AGRICULTURE THEME SENSITIVITY

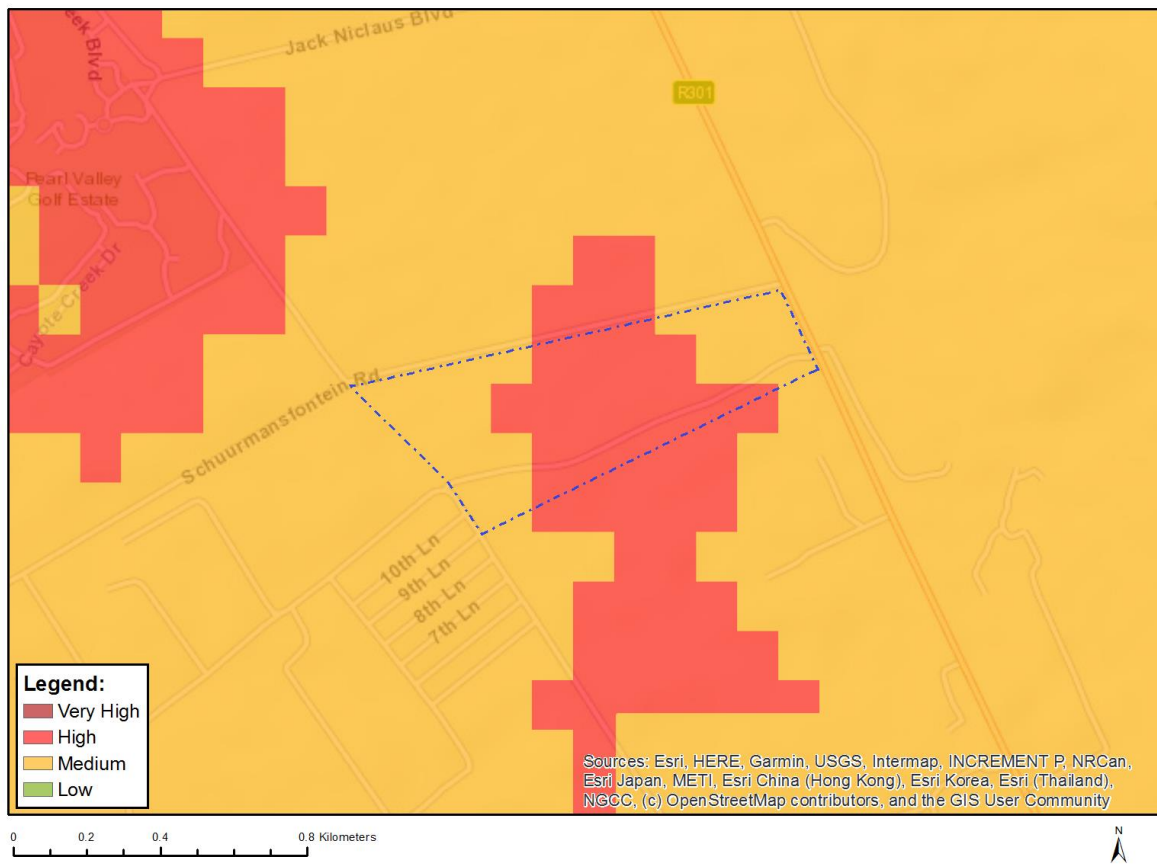


Very High sensitivity	High sensitivity	Medium sensitivity	Low sensitivity
X			

Sensitivity Features:

Sensitivity	Feature(s)
High	Land capability;09. Moderate-High/10. Moderate-High
Medium	Land capability;06. Low-Moderate/07. Low-Moderate/08. Moderate
Very High	Land capability;11. High/12. High-Very high/13. High-Very high/14. Very high/15. Very high

MAP OF RELATIVE ANIMAL SPECIES THEME SENSITIVITY



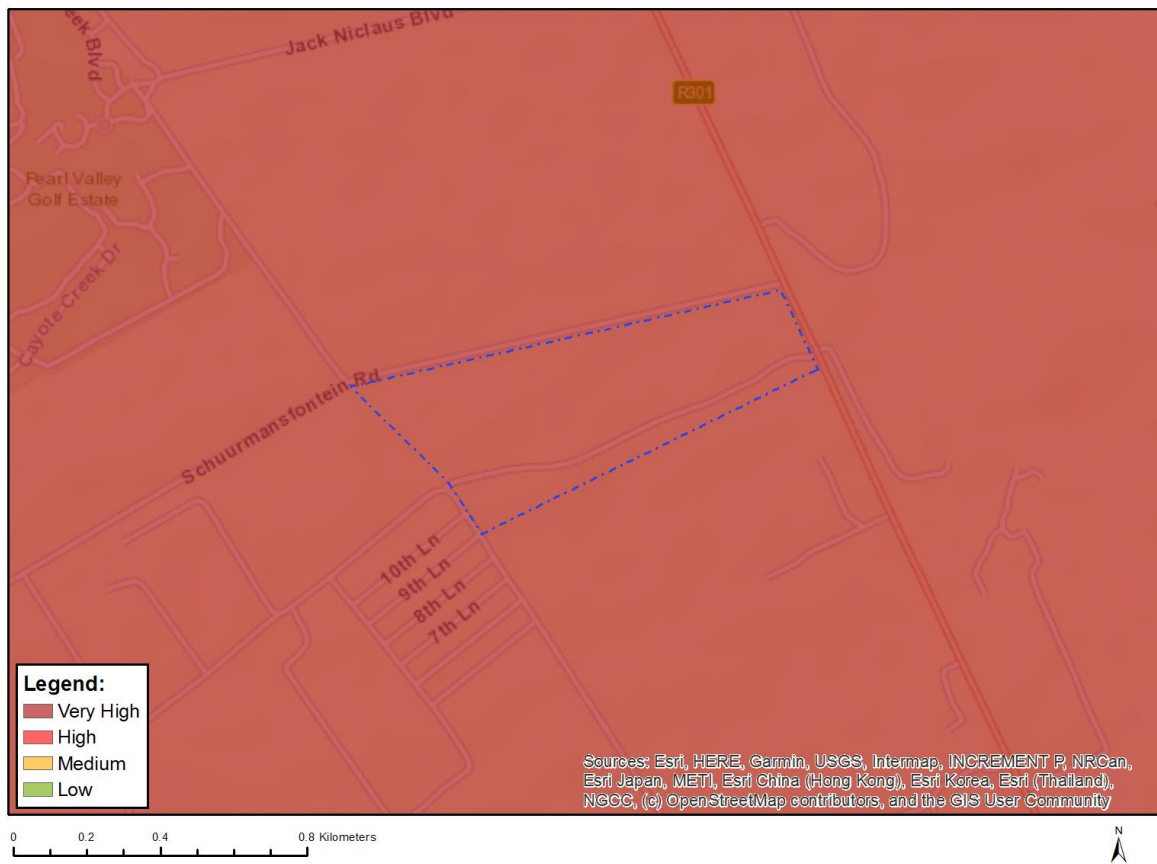
Where only a sensitive plant unique number or sensitive animal unique number is provided in the screening report and an assessment is required, the environmental assessment practitioner (EAP) or specialist is required to email SANBI at eiadatarequests@sanbi.org.za listing all sensitive species with their unique identifiers for which information is required. The name has been withheld as the species may be prone to illegal harvesting and must be protected. SANBI will release the actual species name after the details of the EAP or specialist have been documented.

Very High sensitivity	High sensitivity	Medium sensitivity	Low sensitivity
	X		

Sensitivity Features:

Sensitivity	Feature(s)
High	Aves-Pelecanus onocrotalus
Medium	Aves-Hydroprogne caspia
Medium	Invertebrate-Conocephalus peringueyi
Medium	Invertebrate-Aneuryphymus montanus

MAP OF RELATIVE AQUATIC BIODIVERSITY THEME SENSITIVITY

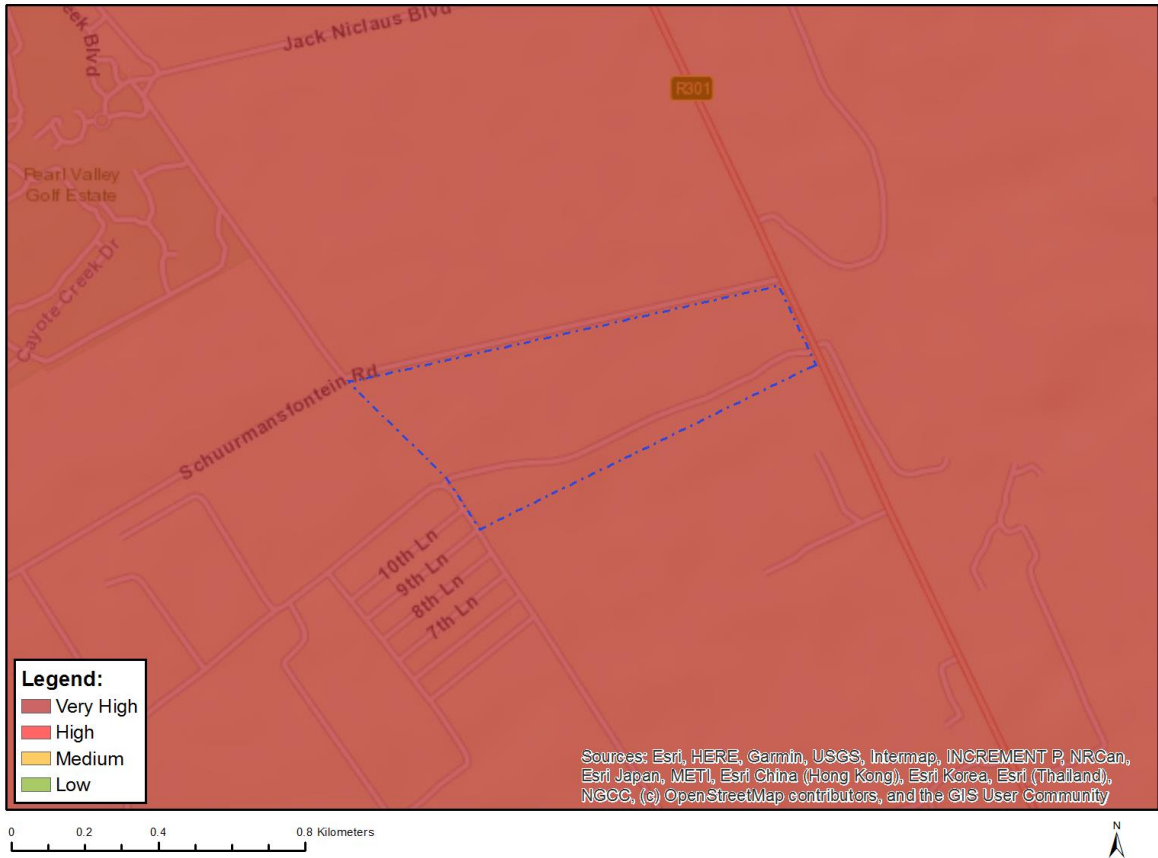


Very High sensitivity	High sensitivity	Medium sensitivity	Low sensitivity
X			

Sensitivity Features:

Sensitivity	Feature(s)
Very High	Aquatic CBAs
Very High	Strategic water source area

MAP OF RELATIVE ARCHAEOLOGICAL AND CULTURAL HERITAGE THEME SENSITIVITY

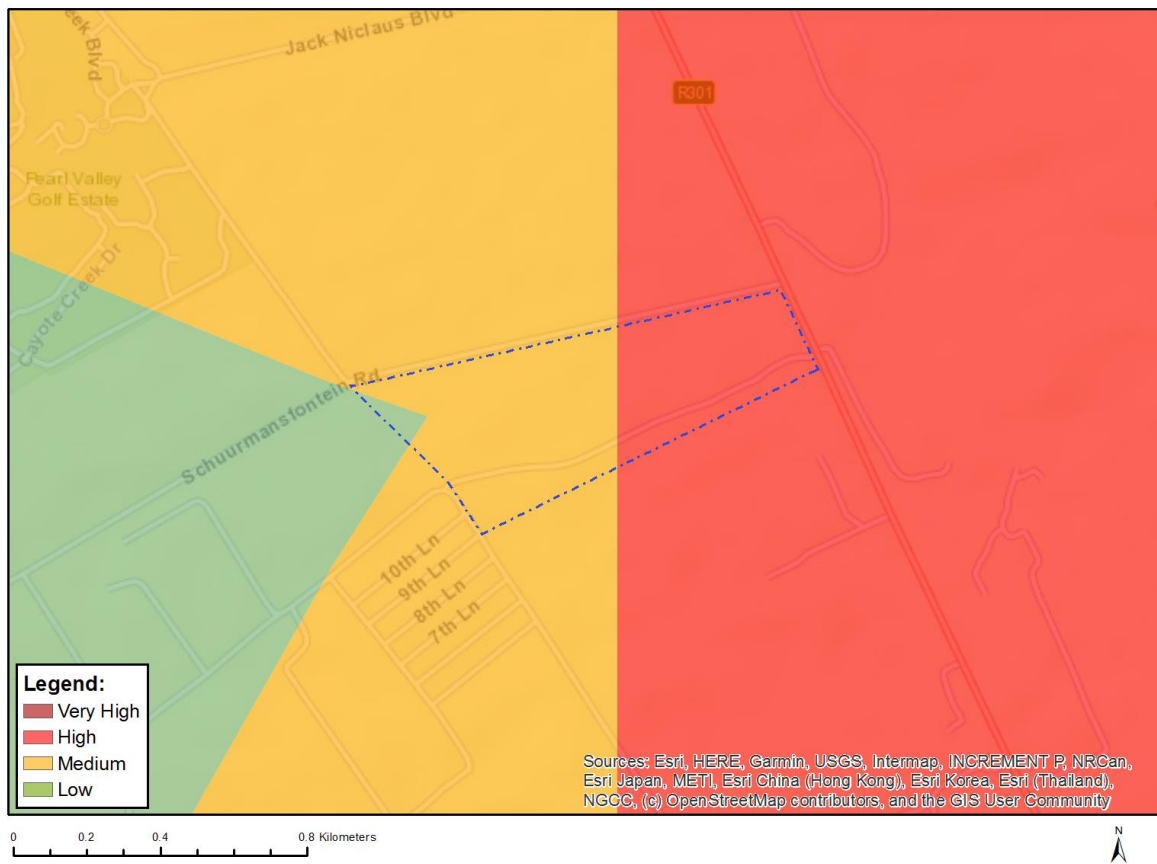


Very High sensitivity	High sensitivity	Medium sensitivity	Low sensitivity
X			

Sensitivity Features:

Sensitivity	Feature(s)
Very High	Within 5km of a Grade I Heritage site

MAP OF RELATIVE CIVIL AVIATION THEME SENSITIVITY



Very High sensitivity	High sensitivity	Medium sensitivity	Low sensitivity
	X		

Sensitivity Features:

Sensitivity	Feature(s)
High	Dangerous and restricted airspace as demarcated
Low	Low sensitivity
Medium	Between 8 and 15 km of other civil aviation aerodrome

MAP OF RELATIVE DEFENCE THEME SENSITIVITY



Very High sensitivity	High sensitivity	Medium sensitivity	Low sensitivity
			X

Sensitivity Features:

Sensitivity	Feature(s)
Low	Low Sensitivity

MAP OF RELATIVE PALEONTOLOGY THEME SENSITIVITY

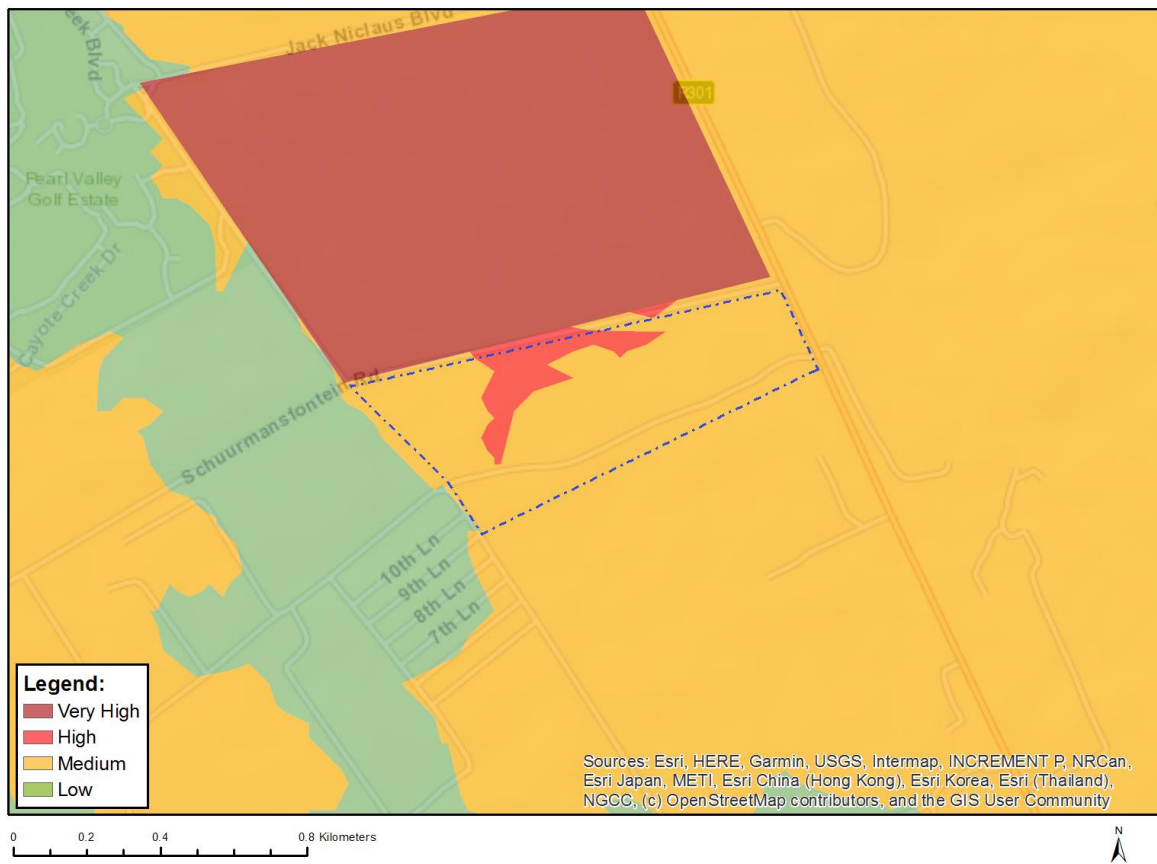


Very High sensitivity	High sensitivity	Medium sensitivity	Low sensitivity
	X		

Sensitivity Features:

Sensitivity	Feature(s)
High	Features with a High paleontological sensitivity
Low	Features with a Low paleontological sensitivity

MAP OF RELATIVE PLANT SPECIES THEME SENSITIVITY



Where only a sensitive plant unique number or sensitive animal unique number is provided in the screening report and an assessment is required, the environmental assessment practitioner (EAP) or specialist is required to email SANBI at eiadatarequests@sanbi.org.za listing all sensitive species with their unique identifiers for which information is required. The name has been withheld as the species may be prone to illegal harvesting and must be protected. SANBI will release the actual species name after the details of the EAP or specialist have been documented.

Very High sensitivity	High sensitivity	Medium sensitivity	Low sensitivity
	X		

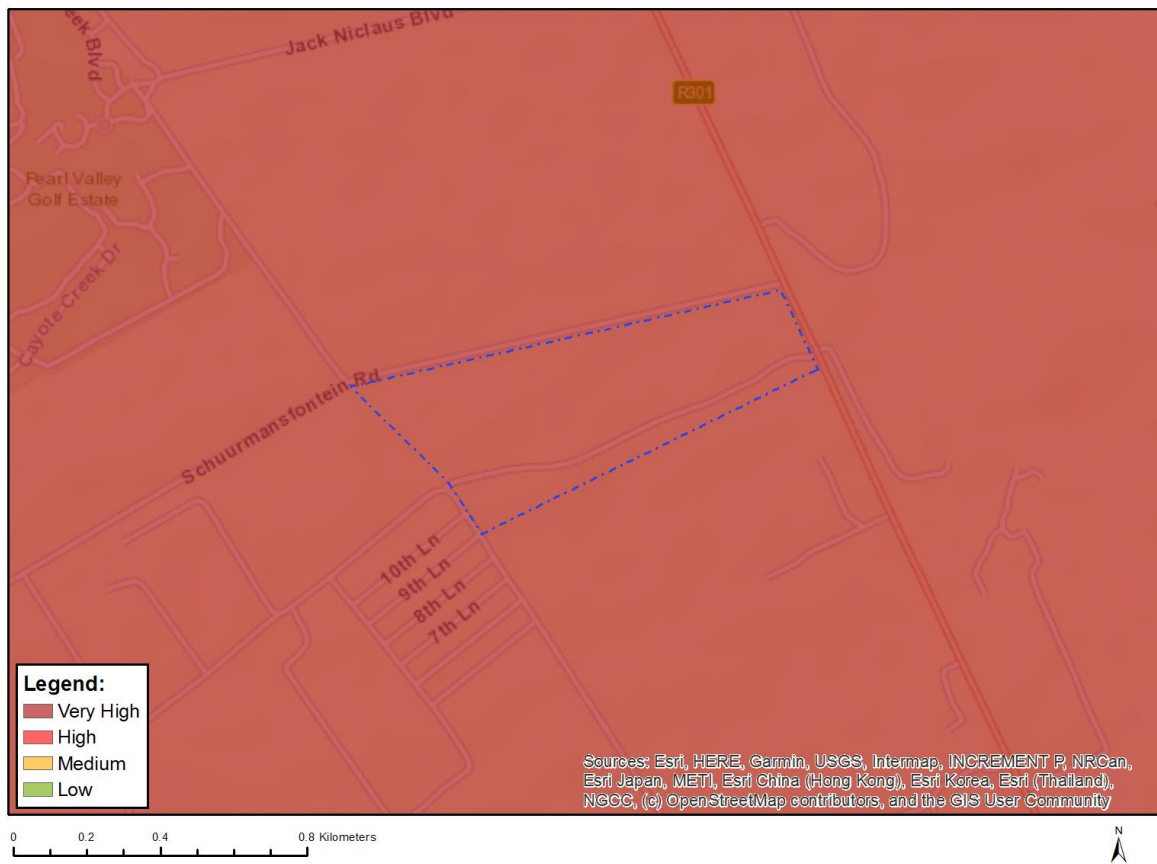
Sensitivity Features:

Sensitivity	Feature(s)
High	Skiatophytum skiatophytoides
Low	Low Sensitivity
Medium	Lampranthus aureus
Medium	Lampranthus dilutus
Medium	Lampranthus filicaulis
Medium	Lampranthus leptaleon
Medium	Lampranthus peacockiae
Medium	Lampranthus scaber
Medium	Lampranthus sociorum
Medium	Lampranthus spiniformis
Medium	Antimima aristulata
Medium	Erepsia patula
Medium	Erepsia ramosa

Medium	<i>Ruschia diversifolia</i>
Medium	<i>Drosanthemum hispidifolium</i>
Medium	<i>Xiphotheca lanceolata</i>
Medium	<i>Indigofera psoraloides</i>
Medium	<i>Aspalathus aculeata</i>
Medium	<i>Aspalathus araneosa</i>
Medium	<i>Aspalathus attenuata</i>
Medium	<i>Aspalathus muraltioides</i>
Medium	<i>Rafnia lancea</i>
Medium	<i>Leucadendron corymbosum</i>
Medium	<i>Leucadendron daphnoides</i>
Medium	<i>Leucadendron lanigerum</i> var. <i>lanigerum</i>
Medium	<i>Leucospermum hypophyllocarpodendron</i> subsp. <i>canaliculatum</i>
Medium	<i>Leucospermum hypophyllocarpodendron</i> subsp. <i>hypophyllocarpodendron</i>
Medium	<i>Protea burchellii</i>
Medium	<i>Protea scorzonerifolia</i>
Medium	<i>Spatalla propinqua</i>
Medium	<i>Diastella buekii</i>
Medium	<i>Serruria pinnata</i>
Medium	<i>Merciera tetraloba</i>
Medium	Sensitive species 794
Medium	<i>Pentameris bachmannii</i>
Medium	<i>Anthospermum ericifolium</i>
Medium	<i>Lobostemon capitatus</i>
Medium	<i>Echiostachys incanus</i>
Medium	<i>Tritoniopsis elongata</i>
Medium	<i>Hesperantha spicata</i> subsp. <i>spicata</i>
Medium	Sensitive species 631
Medium	Sensitive species 533
Medium	Sensitive species 1134
Medium	<i>Geissorhiza brehmii</i>
Medium	<i>Geissorhiza cataractarum</i>
Medium	<i>Geissorhiza humilis</i>
Medium	<i>Geissorhiza setacea</i>
Medium	<i>Sparaxis grandiflora</i> subsp. <i>grandiflora</i>
Medium	<i>Ixia rouxii</i>
Medium	<i>Ixia sarmentosa</i>
Medium	Sensitive species 1253
Medium	Sensitive species 1
Medium	Sensitive species 830
Medium	Sensitive species 298
Medium	Sensitive species 567
Medium	Sensitive species 863
Medium	<i>Pauridia alba</i>
Medium	<i>Pauridia canaliculata</i>
Medium	<i>Pauridia pygmaea</i>
Medium	<i>Hermannia rugosa</i>
Medium	Sensitive species 769
Medium	Sensitive species 222
Medium	Sensitive species 444
Medium	Sensitive species 478
Medium	Sensitive species 756
Medium	<i>Adenogramma rigida</i>
Medium	<i>Wachendorfia brachyandra</i>
Medium	<i>Hessea cinnamomea</i>
Medium	Sensitive species 847
Medium	<i>Isoetes capensis</i>
Medium	Sensitive species 133
Medium	<i>Isolepis leucoloma</i>
Medium	<i>Cannomois arenicola</i>

Medium	<i>Hypodiscus rugosus</i>
Medium	<i>Restio duthieae</i>
Medium	<i>Restio pratensis</i>
Medium	Sensitive species 120
Medium	Sensitive species 682
Medium	<i>Evotella rubiginosa</i>
Medium	<i>Gnidia spicata</i>
Medium	<i>Lachnaea uniflora</i>
Medium	<i>Metalasia capitata</i>
Medium	<i>Athanasia capitata</i>
Medium	<i>Athanasia crenata</i>
Medium	<i>Arctotis angustifolia</i>
Medium	Sensitive species 1042
Medium	<i>Cliffortia ericifolia</i>
Medium	<i>Muraltia decipiens</i>
Medium	<i>Muraltia macropetala</i>
Medium	Sensitive species 158
Medium	Sensitive species 1265
Medium	<i>Wurmbea inusta</i>
Medium	<i>Phylica strigulosa</i>
Medium	<i>Codonorhiza azurea</i>
Medium	<i>Skiatophytum skiatophytoides</i>
Medium	<i>Lampranthus debilis</i>
Medium	<i>Lampranthus glaucus</i>
Medium	<i>Xiphotheca reflexa</i>
Medium	<i>Psoralea alata</i>
Medium	<i>Aspalathus lebeckioides</i>
Medium	<i>Aspalathus recurva</i>
Medium	Sensitive species 593
Medium	Sensitive species 335
Medium	Sensitive species 599
Medium	<i>Restio paludosus</i>
Medium	<i>Restio rigoratus</i>
Medium	<i>Pachites bodkinii</i>
Medium	<i>Lachnaea capitata</i>
Medium	<i>Lachnaea grandiflora</i>
Medium	<i>Cotula pusilla</i>
Medium	Sensitive species 1225

MAP OF RELATIVE TERRESTRIAL BIODIVERSITY THEME SENSITIVITY



Very High sensitivity	High sensitivity	Medium sensitivity	Low sensitivity
X			

Sensitivity Features:

Sensitivity	Feature(s)
Very High	Critical biodiversity area 1
Very High	Critical biodiversity area 2
Very High	Ecological support area 2
Very High	Strategic Water Source Areas
Very High	Critically endangered ecosystem
Very High	Vulnerable ecosystem