



Amafa aKwazulu-Natali
195 Jabu Ndlovu Street Pietermaritzburg 3200 August
Telephone 033 3946 543
bernadetp@amafapmb.co.za

23 January 2016

Attention Bernadet Pawandiwa

Dear Ms Pawandiwa

Application for Exemption from a Phase 1 Heritage Impact Assessment

**Proposed Poultry Project
Kevin Lawrie Family Trust, Portion A of the Farm Pasina 17671, Riverview
Mtubatuba LM, Umkhanyakude District DM, KwaZulu-Natal.**

Project Area and Project description¹

The Kevin Lawrie Family Trust is planning to establish a poultry production farm (egg laying) on a 2.2 Ha property near Riverview within the Mtubatuba Local Municipality (Figure 1).

The proposed development will entail the revamping of an existing storage facility into chicken houses, the construction of an additional shed where chickens will be placed and the construction of a small abattoir for the processing and packing of chickens that have become unproductive. A total of 25 000 chickens will be stocked on site during Phase 1 of the proposed development; and an additional 25,000 chickens will be stocked on the farm during Phase 2 of the proposed development. At peak production the poultry operation will be able to accommodate 50,000 chickens.

Environmental Impact Assessment Regulations require a Basic Assessment to be undertaken in terms of NEMA, Act No. 107 of 1998, as amended.

Observations

Sugar cane cultivation has been conducted along the lower Mfolosi flood plain since 1913. These activities were expanded between 1925 and 1930 with the re-siting of the Umfolozi Mill to its current position and the inception of draining and canalizing the river floodplain to make silt laden lands available for planting². Consequently, Pasina Farm lies on reclaimed swamp land and has been under cultivation for longer than 80 years (Figure 2).

The buildings currently within the farmstead precinct are both utilitarian and modern and are to be up-cycled for incorporation as chicken houses and the abattoir.

¹ EXIGENT EAP's: Background Information Document - Proposed Establishment of a Poultry Farm near Mtubatuba, Umkhanyakude District Municipality, KwaZulu-Natal.

² <http://www.umfolozisugarmill.co.za/page.aspx?ID=5855>

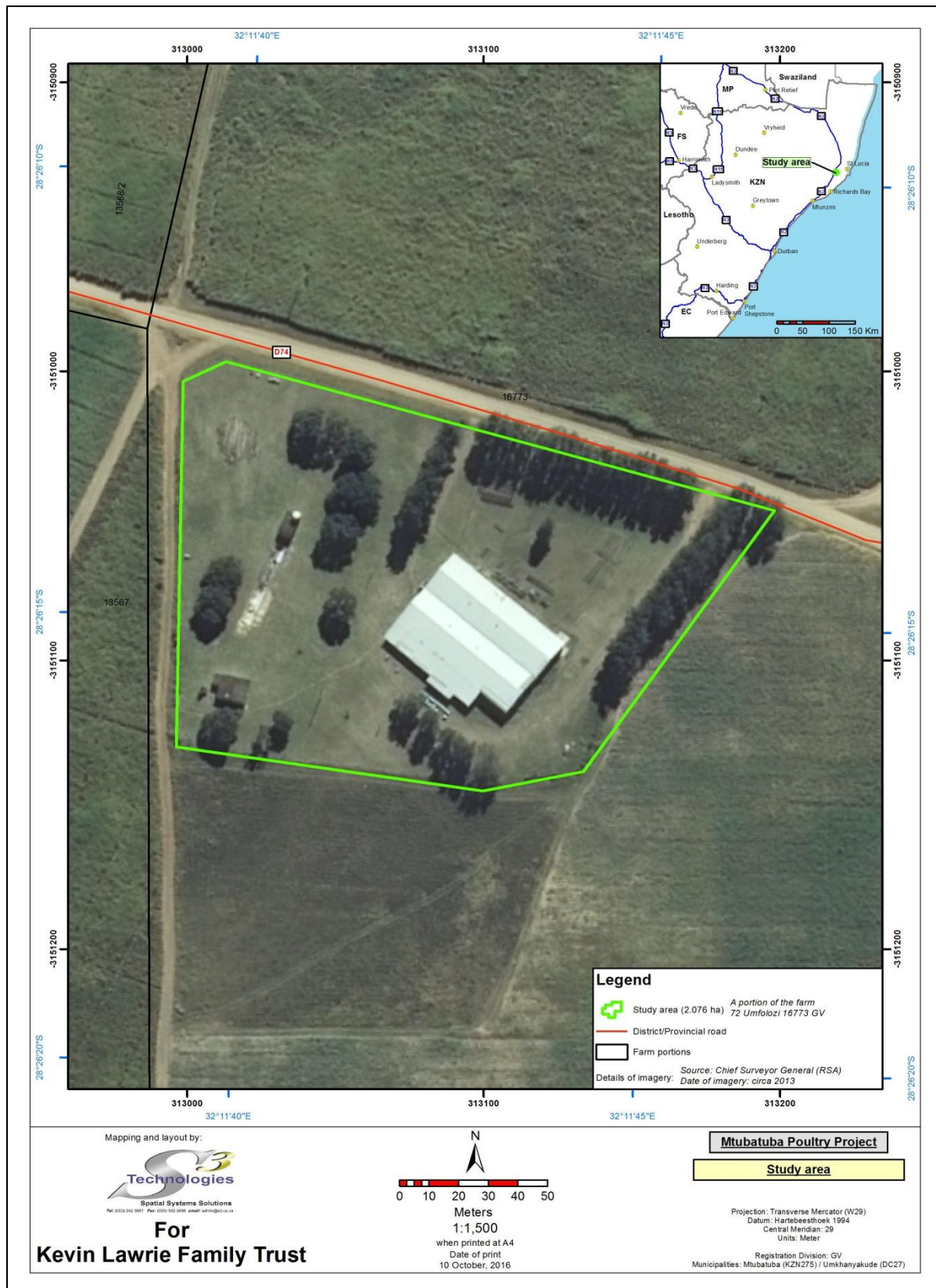


Figure 1 Locality map of the proposed development

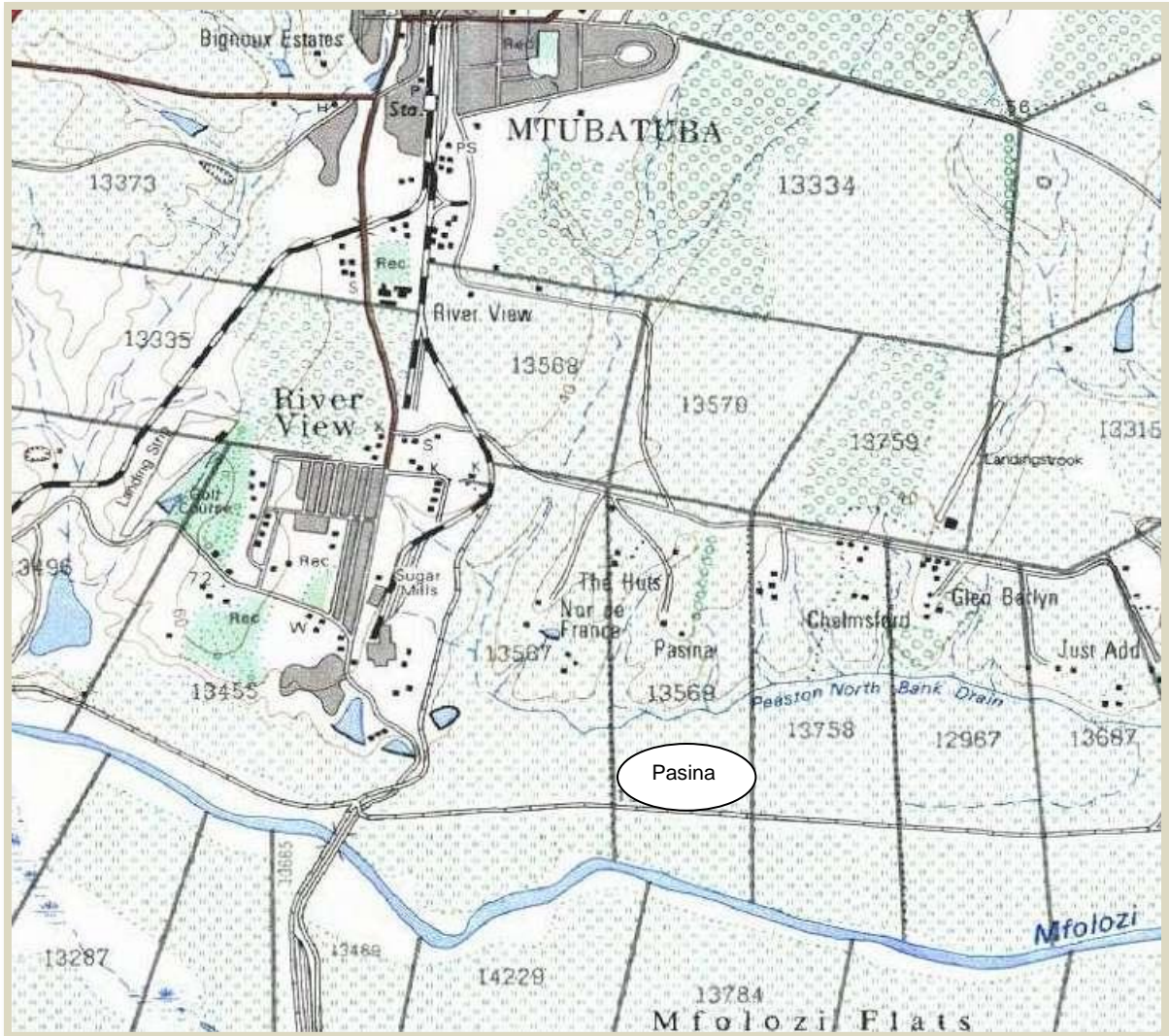


Figure 2 2832 AC – Mtubatuba: Location of Pasina Farm and poultry project, Riverview.



Figure 3 **Farm Precinct**



Figure 4 **Farm Buildings**

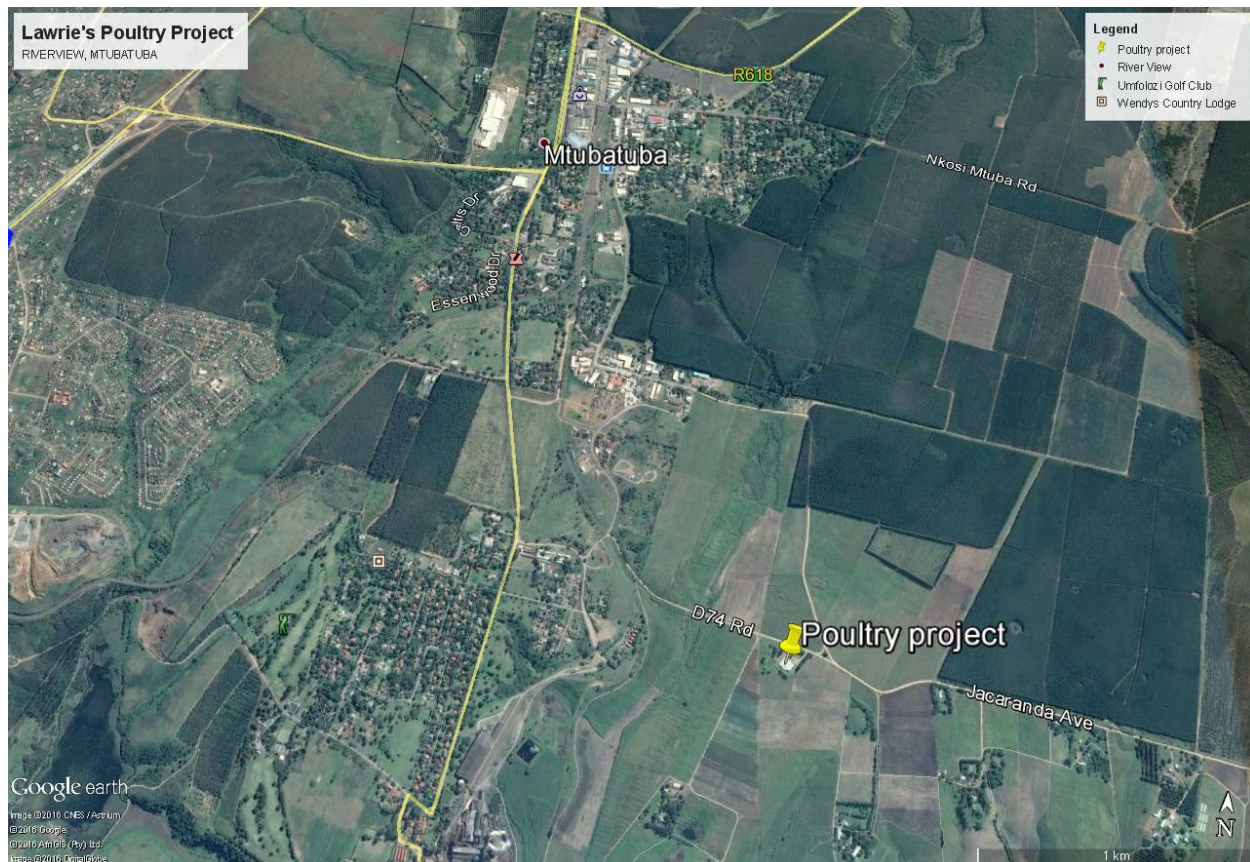


Figure 5 Current land use in the vicinity of the proposed poultry project

The SAHRIS Palaeontology sensitivity map indicates the area to be of low sensitivity (blue). Consequently no further palaeontology assessment or monitoring is recommended.

No heritage resources of any significance are anticipated in (1) reclaimed swampland and, (2) an area of active commercial agriculture for over 80 years.

Recommendations

Accordingly, we request that Amafa grant an exemption from an HIA for the proposed expansion of the borrow pit, allowing the enterprise to proceed with no further heritage resource mitigation.

In this regard, please can you notify us timeously via the loaded SAHRIS case file as to the decision of Amafa.

Yours sincerely

Len van Schalkwyk

Len van Schalkwyk
Principle Investigator.