



Amafa aKwazulu-Natali
195 Jabu Ndlovu Street Pietermaritzburg 3200 August
Telephone 033 3946 543
bernadetp@amafapmb.co.za

16 January 2016

Attention Bernadet Pawandiwa

Dear Ms Pawandiwa

Application for Exemption from a Phase 1 Heritage Impact Assessment

**Proposed cultivation of 18.4 ha of fallow land for sugarcane production
On Sub 2 & 3 of Farm No. 850 Maybole, Baynesfield
Mgungundlovu DM, KwaZulu-Natal.**

Project Area and Project description¹

The She Creative House cc (TSCH) is proposing to cultivate 18.4 hectares of land for sugarcane production on the remainder of the 116.26 ha Farm 850 Maybole at Baynesfield, near Richmond. TSCH is located on Sub 2 and 3 of the farm, 18km from Pietermaritzburg (see Figure 1.). The current land-use of Maybole Farm is agriculture, with current production consisting of 20 hectares of vegetable and 2.7 hectares of pomegranate. The proposed sugar cane production area is on previously cultivated land.

TSCH is an agricultural business whose objective is to sustainably and passionately produce high quality vegetables, playing an important role in food security and socio-economic upliftment. The business consists of 3 members and a team of approximately 20 semi-skilled and unskilled staff in different divisions of the business. The proposed sugarcane development would enable the business to extend its agricultural footprint and ultimately sustain the business.

Observations

Today the Baynesfield area comprises mostly intensive commercial forestry, sugar cane and other mixed farming production with associated infrastructure and services. The proposed sugar cane expansion to the current cultivation and production is in keeping with the current agrarian landscape and associated activities.

¹ CSIR Background Information Document - Proposed cultivation of 18.4 ha of fallow land for sugarcane production on Sub 2 & 3 of Farm No. 850 Maybole, Baynesfield, Mgungundlovu DM, KwaZulu-Natal.
(CSIR Ref. CSIR/02100/EMS/IR/2016/0001/A).

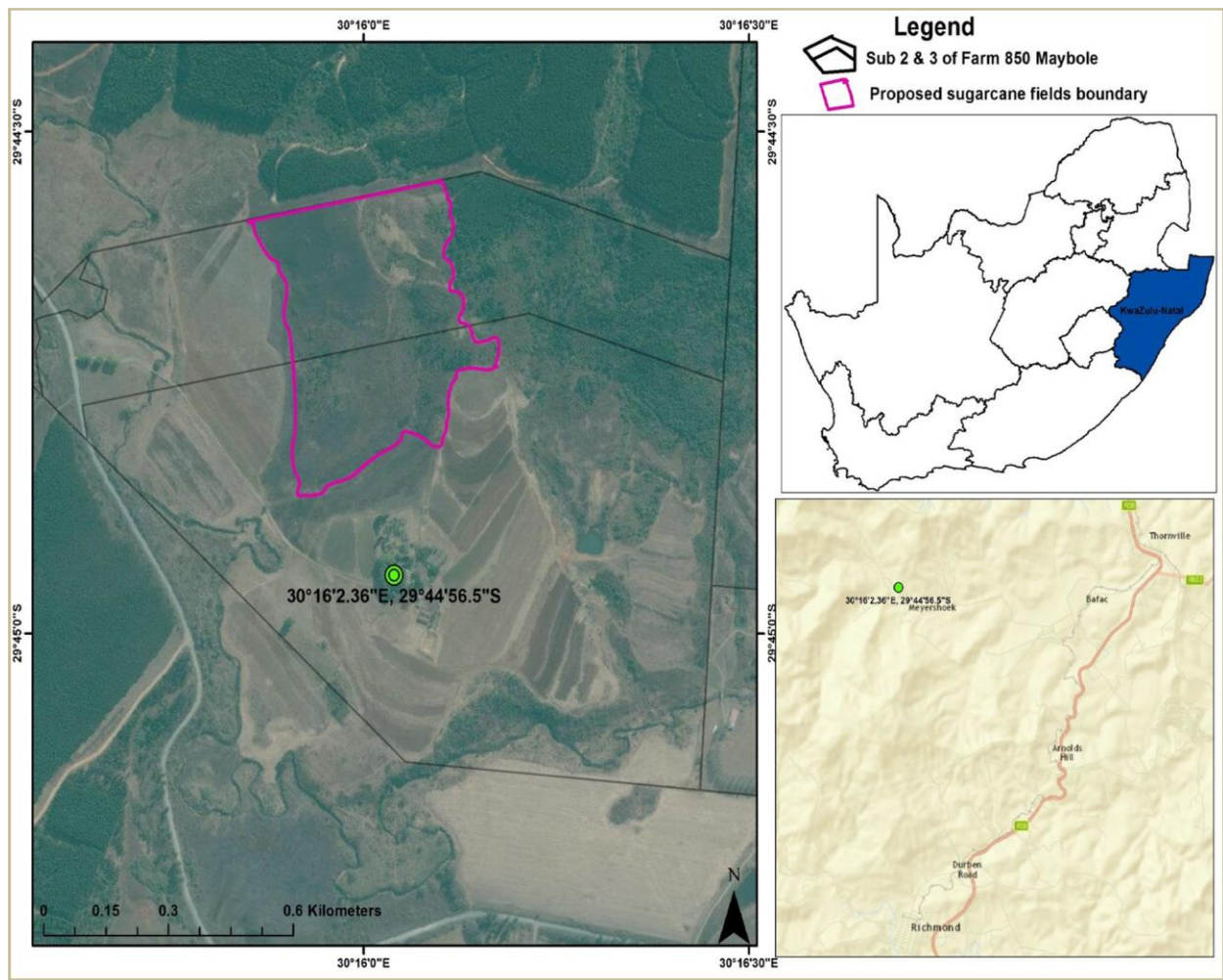


FIGURE 1 LAYOUT PLAN OF STUDY AREA



FIGURE 2. Sub 2 & 3 of Farm No. 850 Maybole

The archaeological footprint of these historically sourveld “Ngongoni” mist-belt grasslands is understood to be low (KZN Museum Archaeology Data Base). The long history of land cultivation on the farm will have resulted in any surface scatters of cultural residues being moved out of primary context and incorporated into the plough zone. No significant archaeological remains are expected.

No historical graves are reported by the project proponents who are residents of the adjacent local communities.

The SAHRIS Palaeontology sensitivity map indicates the area to be of moderate potential. Maybole lies on an Eccca Group basement (comprising Pietermaritzburg Formation shales) with intrusive dolerite sills². Weathering of the basement has produced relatively deep soils and the underlying lithology is unlikely to be impacted by the proposed agricultural activities. Consequently no further palaeontology assessment or monitoring is recommended.

² Groenewald, G. 2012. Palaeontological Technical Report for KwaZulu-Natal. Unpublished. Amafa aKwaZulu-Natali.

Recommendations

Accordingly, we request that Amafa grant an exemption from an HIA for the proposed sugar cane expansion and local community upliftment project, allowing the enterprise to proceed with no further heritage resource mitigation.

In this regard, please can you notify us timeously via the loaded SAHRIS case file as to the decision of Amafa.

Yours sincerely

A handwritten signature in black ink, appearing to read 'Len van Schalkwyk'.

Len van Schalkwyk
Principle Investigator.