



COBUS DREYER

Pr. Archaeologist/Heritage Specialist

**P.O. Box 12910
BRANDHOF 9324
Bloemfontein
dreyerj@telkomsa.net**

**Tel: 051-444 1187
Fax: 051-444 4395
Cell: 083 357 7982**

12 April 2012

FIRST PHASE ARCHAEOLOGICAL AND HISTORICAL INVESTIGATION OF THE PROPOSED COMMERCIAL DEVELOPMENTS ON PORTION 10, BERGENDAL 1706 & ERF 26360, BLOEMFONTEIN

EXECUTIVE SUMMARY

Commercial developments are planned on the farm Bergendal 1706 and at Erf 26360, along the N1 main road outside Bloemfontein.

The land already contains a substantial truck stop and filling station facilities and several living houses. The land was severely disturbed by road building as well as the installation of underground water pipes and cable connections.

A single circular stone walled structure of about 3m diameter and about 1,5m high, which could have been a well, occurs in the area.

No other cultural, archaeological or heritage remains were found on the surface during the present survey.

I recommend that further planning and development of the commercial developments may continue.

INTRODUCTION AND DESCRIPTION

Scope and Limitations

The investigation provided an opportunity to examine the site proposed for commercial developments. No limitations were experienced during site visit.

Methodology

1. The site was inspected on foot.
2. GPS points were taken and the surrounding area and features were recorded on camera.

INVESTIGATION

The site for the commercial developments at Bergendal 1706 and Erf 26360, outside Bloemfontein, was inspected on 1 February 2012. Marguerite Cronjé and Darius van Rensburg from MDA Environmental Consultants, Bloemfontein, took me to the site.

The Iron Age archaeology of the Free State had been described by Maggs (1976) and was summarised by Dreyer (1996). Iron Age stone-walled sites are normally restricted to higher ground or hilly parts and are not found in the low-lying open areas around Bloemfontein.

Stone tools could well occur in these areas and is usually restricted to the Middle and Later Stone Age lithic material.

From a series of Environmental Impact Assessments (EIA) done in this region previously, we know that the northern and north-eastern outskirts of Bloemfontein and the Tempe area is characterised by remnants of Anglo-Boer War activities. Fired cartridge shells and metal food containers displaying heavily soldered seams, are some of the most common finds.

The area was examined for possible archaeological and historical material and to establish the potential impact on any cultural material that might be found. The Heritage Impact Assessment (HIA) is done in terms of the National Heritage Resources Act (NHRA), (25 of 1999) and under the Environmental Conservation Act, (73 of 1989).

The study aims to locate and evaluate the significance of cultural heritage sites, archaeological material, manmade structures older than 60 years, and sites associated with oral histories and graves that might be affected by the proposed developments.

LOCALITY

The farm Bergendal 1706 and Erf 26360 are located north of Bloemfontein, at the crossing between the R700 to Bultfontein and the N1 by-pass (Map 1) (Surveyor-General 1973).

The area consists of a deep deposit of sterile clay soil (Fig.9).

The locality of the proposed development area is indicated on Map 1.

The following GPS coordinates (Cape scale) were taken (2926AA) (Map 2).

A	29°02'37"S 026°13'13"E Altitude 1383m (Figs.1&2).
B	29°02'30"S 026°13'03"E Altitude 1397m (Figs.3&4).
C	29°02'31"S 026°13'15"E Altitude 1373m (Figs.5-7).
D	29°02'27"S 026°13'32"E Altitude 1374m (Figs.8&9).
E	29°02'43"S 026°13'31"E Altitude 1388m (Figs.10&11).

RESULTS

FINDS

The possibility of Anglo-Boer War relics are ruled out in this region.

No other cultural or historical material was found during the investigation, nor were there any stone tool material visible.

A single circular stone walled structure of about 3m diameter and about 1,5m high, occur in the area near Point C (Fig.12).

The origin of this stone feature could not be determined.

ASSESSMENT OF IMPACT

There are a significant truck stop and filling station facilities (Fig.8) and several domestic houses at the site (Figs.4&6). The land was further severely disturbed by road building, the installation of underground water pipes and cable connections (Figs.8&9).

No cultural, historical or archaeological material was found during the present survey.

There will be no impact on any archaeological or historical heritage of the area.

RECOMMENDATIONS

I recommend that the planning of the proposed commercial developments at Bergendal 1706, outside Bloemfontein, may proceed.

MITIGATION

No mitigation measures will be needed in this area of development.

ACKNOWLEDGEMENTS

I thank Marguerite Cronjé and Darius van Rensburg from MDA Environmental Consultants, Bloemfontein, for taking me to the site.

SELECT BIBLIOGRAPHY:

DEACON, J. 1992. Archaeology for Planners, Developers and Local Authorities. Cape Town: National Monuments Council.

DREYER, J. 1996. Introduction to Free State Iron Age Archaeology. In: Guide to archaeological sites in the Free State and Lesotho. Southern African Association of Archaeologists (SA3), 14th Biennial Conference, Bloemfontein, Post-conference tour 5-8 July 1996. Bloemfontein: National Museum.

DREYER, J. 2004. Archaeological and historical investigation of the proposed Shellyvale residential developments, at Lilyvale 2913, Bloemfontein. . EIA Report for CEBO Environmental Consultants, Bloemfontein.

DREYER, J. 2004. Archaeological and historical investigation of the proposed developments at the remainder of Rayton 28, portion 1 of Rayton 28 & portion 2 of Rayton 431, Bloemfontein. EIA Report for CEBO Environmental Consultants, Bloemfontein.

DREYER, J. 2004. Archaeological and historical investigation of the proposed Rayton Estate Township, on Subdivision 29 of the farm Lilyvale 2913, Bloemfontein. EIA Report for Spatial Solutions Incorporated Environmental Consultants, Bloemfontein.

DREYER, J. 2004. Archaeological and historical investigation of the proposed developments at Subdivisions 20 & 24 of the farm Lilyvale 2313, Bloemfontein. EIA Report for CEBO Environmental Consultants, Bloemfontein.

DREYER, J. 2004. First phase heritage / archaeological assessment of the proposed residential development at Hillandale, Bloemfontein. EIA Report for CEBO Environmental Consultants, Bloemfontein.

DREYER, J. 2006. First phase heritage / archaeological assessment of the proposed residential development at Hillandale, Bloemfontein. EIA Report for CEBO Environmental Consultants, Bloemfontein.

DREYER, J. 2006. First phase archaeological and cultural heritage assessment of the Phase II residential developments of Woodland Hills Wildlife Estate, Hillandale 2960 (249), Bloemfontein. EIA Report for CEBO Environmental Consultants, Bloemfontein.

DREYER, C. 2007. First phase archaeological and cultural heritage investigation of the proposed residential developments on the Annex of Wildealskloof 2607, Bloemfontein. AIA Report for MDA Environmental Consultants, Bloemfontein.

DREYER, J. 2009. First phase archaeological and historical investigation of the proposed poultry facilities on Portions 2 & 3 Wildealskloof 1205, Bloemfontein. EIA Report for MDA Environmental Consultants, Bloemfontein.

DREYER, J. 2009. Archaeological and historical investigation of the proposed residential developments on Portion 4 of the farm Bayswater 2865, Bloemfontein. EIA Report for MDA Environmental Consultants, Bloemfontein.

DREYER, J. 2009. First phase archaeological and cultural heritage investigation of the proposed residential establishment on Portions 24 – 26 of the Remainder of the farm Roodam 2312, Bloemfontein. EIA Report for MDA Environmental Consultants, Bloemfontein.

DREYER, J. 2009. First phase archaeological and historical investigation of the proposed poultry facilities on Portions 2 & 3 Wildealskloof 1205, Bloemfontein. EIA Report for MDA Environmental Consultants, Bloemfontein.

DREYER, J. 2009. First phase archaeological and cultural heritage investigation of the proposed commercial & family centre developments on Portion 6 of Wildealskloof 2607, Bloemfontein. EIA Report for MDA Environmental Consultants, Bloemfontein.

DREYER, J. 2010. First phase archaeological and historical investigation of the proposed cattle feedlot facilities on Portion 2, Wildealskloof 1205, Bloemfontein. EIA Report for MDA Environmental Consultants, Bloemfontein.

DREYER, J. 2011. First phase archaeological & heritage investigation of the proposed township developments on Subdivision 2 (Kiepersol) of the farm Strathearn 2154, Bloemfontein. EIA Report for MDA Environmental Consultants, Bloemfontein.

DREYER, J. 2012. Letter of recommendation for the exemption from a first phase archaeological & heritage investigation of the proposed establishment of a Photo Voltaic solar power system on the farm Mara 2571, Woodland Hills Wildlife Estate, Bloemfontein. EIA Report for Jean Beater Environmental Consultants, Port Elizabeth.

HUMPHREYS, A.J.B. 1986. Searching for the past. Cape Town: David Philip.

MAGGS, T.M. 1976. Iron Age Communities of the Southern Highveld. Pietermaritzburg: Natal Museum.

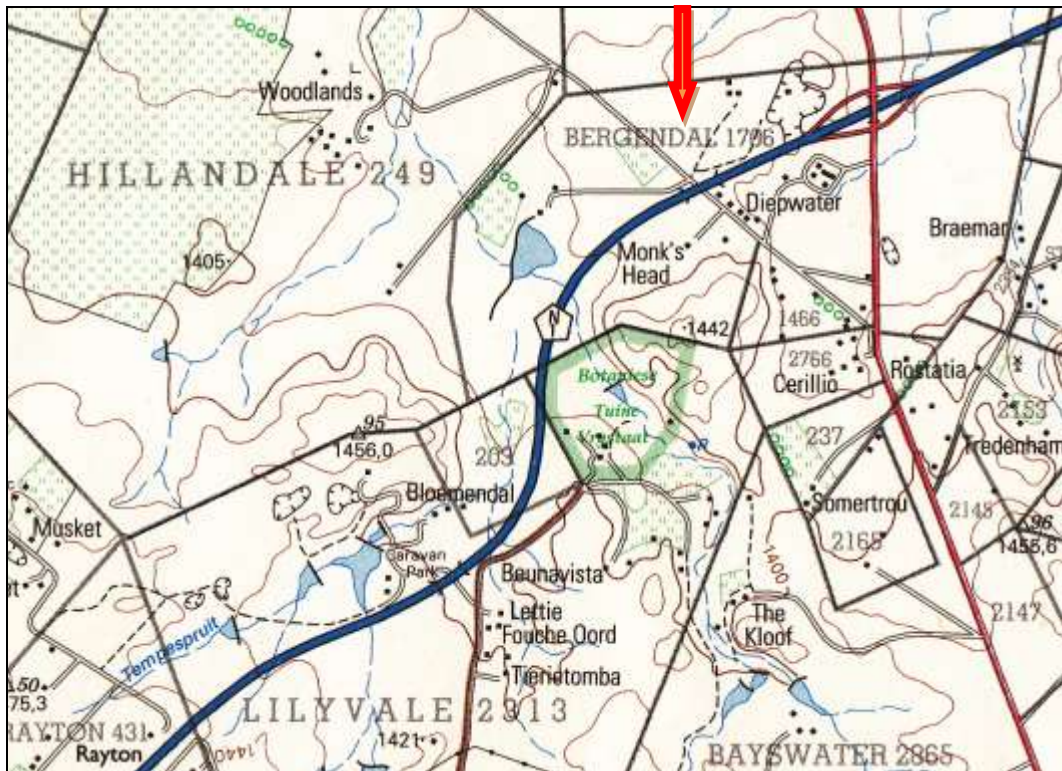
PAKENHAM, T. 1997. The Boer War. Johannesburg: Jonathan Ball.

PISTORIUS, J.C.C. 1994. Eskom Archaeological Site Identification Guide. Johannesburg: Eskom.

SCHOEMAN, K. 1980. Bloemfontein – die ontstaan van 'n stad. Kaapstad: Human & Rousseau.

SURVEYOR-GENERAL O.F.S. 1973. Index of Orange Free State Farms. Bloemfontein.

LIST OF ILLUSTRATIONS



Map 1 Locality of the farm Bergendal 1706, Bloemfontein (2926AA).



Fig.1 Point A facing north towards Shell Ultra City.



Map 2 Placing of the new developments at Bergendal 1706, Bloemfontein.



Fig.2 Point A at Bergendal 1706, Bloemfontein.



Fig.3 Point B at Bergendal 1706, Bloemfontein.



Fig.4 Residential house near Point B at Bergendal 1706, Bloemfontein.



Fig.5 Point C at Bergendal 1706, Bloemfontein. Shell Ultra City in the centre.



Fig.6 Point C at Bergendal 1706, Bloemfontein facing east.



Fig.7 Point C at Bergendal 1706, Bloemfontein.



Fig.8 Point D at Bergendal 1706, Bloemfontein facing the Ultra City.



Fig.9 Point D at Bergendal 1706, Bloemfontein facing the R700.



Fig.10 Point E at Bergendal 1706, Bloemfontein.



Fig.11 Point E at Bergendal 1706, Bloemfontein.



Fig.12 Circular stone structure near Point C at Bergendal 1706, Bloemfontein.