



COBUS DREYER

Pr. Archaeologist/Heritage Specialist

**P.O. Box 12910
BRANDHOF 9324
Bloemfontein
dreyerj@telkomsa.net**

**Tel: 051-444 1187
Fax: 051-444 4395
Cell: 083 357 7982**

4 SEPTEMBER 2012

FIRST PHASE ARCHAEOLOGICAL AND HERITAGE ASSESSMENT OF THE SOLID WASTE DISPOSAL SITE AT KEIMOES NEAR UPINGTON, NORTHERN CAPE

EXECUTIVE SUMMARY

The Kai! Garib Municipality proposes to upgrade and formalise the existing solid waste disposal site at Keimoes near Upington in the Northern Cape.

No archaeological or historical material was found at the proposed site.

Mitigation measures will not be required during the developments and I recommend that the planning of the site may proceed.

INTRODUCTION AND DESCRIPTION

Scope and Limitations

The archaeological investigation forms part of the Environmental Impact Assessment (EIA) undertaken by MDA Environmental Consultants, Bloemfontein on behalf of the Kai! Garib Municipality, as the developer.

Infrastructure for the handling of household debris will include: an access road, palisade type fencing with access gate, guardhouse and storeroom, a roof covered area with bins for recycling of material, external storm water diversion channels with a run-off collection and a water retention system, parking and waste inspection area.

The investigation provided the opportunity to examine the proposed solid waste disposal site.

No limitations or obstacles were experienced during site visit.

Methodology

Standard archaeological survey and recording methods were used.

1. The site was inspected on foot.
2. GPS points were taken and the surrounding area and features were recorded on camera.

INVESTIGATION

The proposed site at Keimoes was visited on 17 May 2012. Neil Devenish and Marguerite Cronjé from MDA Environmental Consultants, Bloemfontein, took me to the site.

The area is littered by unofficial refuse disposal.

The site was examined for any possible traces of cultural and historical remains to establish the potential impact of the developments on any archaeological and cultural historical material. The Heritage Impact Assessment (HIA) is done in terms of the National Heritage Resources Act (NHRA), (25 of 1999) and under the Environmental Conservation Act, (73 of 1989).

The report aims to locate and evaluate the significance of cultural heritage sites, archaeological material, manmade structures older than 60 years, and sites associated with oral histories and graves that might be affected by the proposed developments.

I have done a considerable number of Environmental and Heritage Impact assessments in the Northern Cape and along the upper part of the West Coast and along the Orange River towards the Richtersveld over the past number of years. I consider myself as familiar with the archaeology and cultural heritage of the area and competent to do the investigation.

LOCALITY

The proposed waste disposal site will cover about 3,459 ha and is located on Erf 3051, Keimoes, approximately 2 km north of the the town. The N14 main road from Upington and Kakamas to the Augrabies Falls National Park (Map 1), Northern Cape (Map 2) runs nearby.

The soil surface had been severely disturbed during the excavation and soil works (Figs.3&4). The proposed site lies near the local township inevitable additional impact on the environment by people and farm animals.

The following GPS coordinates (Cape scale) were taken:

- A** 28°41'11"S 020°58'24"E Altitude 772m (Figs.1-3).
B 28°41'03"S 020°58'26"E Altitude 766m (Figs.4-6).

RESULTS

FINDS

No archaeological material was found at the site, nor were there any engravings or other relics or historical material discovered.

ASSESSMENT OF IMPACT

The proposed developments will have no impact on any cultural and historical remains of the area.

RECOMMENDATIONS

I recommend that the planning of the proposed waste disposal site may proceed.

MITIGATION

Concerning the area for the proposed developments, no mitigation measures will be required.

ACKNOWLEDGEMENTS

I thank Neil Devenish and Marguerite Cronjé from MDA Environmental Consultants, Bloemfontein, for taking me to the site.

SELECT BIBLIOGRAPHY:

BEAUMONT, P.B. & VOGEL, J.C. 1989. Patterns in the age and context of rock art in the Northern Cape. *South African Archaeological Bulletin* 44(150):73-81.

BEAUMONT, P.B., SMITH, A.B. & VOGEL, J.C. 1995. Before the Einiqua: the archaeology of the frontier zone. In Smith, A.B. (Ed.). *Einiqualand: Studies of the Orange River Frontier*. Cape Town: University of Cape Town Press.

DEACON, J. 1992. *Archaeology for Planners, Developers and Local Authorities*. Cape Town: National Monuments Council.

DEACON, H. J. & DEACON, J. 1999. *Human Beginnings in South Africa – Uncovering the secrets of the Stone Age*. Cape town: David Phillip.

DREYER, J. 2002. Archaeological assessment of the proposed upgrading of the road (DR2955) between Springbok and Komaggas, Northern Cape. EIA Report for CEBO Environmental Consultants, Bloemfontein.

DREYER, J. 2003. First phase heritage / archaeological assessment of the NEC Klipkop-Wessels feeder project at Askham, Northern Cape. EIA Report for ESKOM, Kimberley.

DREYER, J. 2005. Archaeological assessment of the proposed upgrading of the gravel road between Alexander Bay and Khubus, Richtersveld, Northern Cape. EIA Report for Cebo Environmental Consultants, Bloemfontein.

DREYER, J. 2006. First phase archaeological and cultural heritage assessment of the proposed concentrated solar thermal plant (CSP) at the farms Olyvenhouts Drift, Upington, Bokpoort 390 and Tampansrus 294/295, Groblershoop, Northern Cape. EIA Report for MDA Environmental Consultants, Bloemfontein.

DREYER, J. 2007. First phase archaeological and cultural heritage assessment of borrow pit R along the proposed R87 road between Rietfontein & Groot Mier, Gordonia district, Northern Cape

DREYER, J. 2008. First phase archaeological and cultural heritage assessment of the proposed water flow measuring weir site on the Orange River near Sendelingsdrif, Northern Cape. EIA Report for Enviroworks Environmental Consultants, Bloemfontein and the Department of Water Affairs, Kimberley.

DREYER, J. 2008. First phase archaeological and cultural heritage assessment of the proposed water flow measuring weir site in the Orange River at Blouputs, Northern Cape. EIA Report for Enviroworks Environmental Consultants, Bloemfontein.

DREYER, J. 2008. First phase archaeological and cultural heritage assessment of the proposed upgrading of the R358 road and borrow pit sites between Pofadder & Onseepkans, Northern Cape. EIA Report for Spatial Solutions Incorporated, Environmental Consultants, Bloemfontein.

DREYER, J. 2008. First phase archaeological and cultural heritage assessment of the proposed water flow measuring weir site on the Orange River near Sendelingsdrif, Northern Cape. EIA Report for Enviroworks Environmental Consultants, Bloemfontein.

DREYER, J. 2010. First phase archaeological and heritage assessment of the proposed water flow measuring weir site in the Orange River at Blouputs, Northern Cape. EIA Report for Enviroworks Environmental Consultants, Bloemfontein and the Department of Water Affairs, Kimberley.

DREYER, J. 2010. First phase archaeological & heritage assessment of the residential developments at Pabalello, Upington, Northern Cape. EIA Report for Stabilis Developments, Kimberley.

DREYER, J. 2010. First phase archaeological & heritage assessment of the proposed development of three borrow pit sites between Nababeep & Concordia, Northern Cape. EIA Report for Spatial Solutions Incorporated, Environmental Consultants, Bloemfontein.

DREYER, J. 2010. First phase archaeological and heritage assessment of the borrow pits for the proposed upgrading of the road from the Mission Gate to Riemvasmaak, Northern Cape. EIA Report for Spatial Solutions Incorporated, Environmental Consultants, Bloemfontein.

DREYER, J. 2011. First phase archaeological & heritage assessment of four bridges on the N14 road between Kakamas & Keimoes, Northern Cape. EIA Report for MDA Environmental Consultants, Bloemfontein.

DREYER, J. 2011. First phase archaeological & heritage assessment of the proposed diamond mining developments at Predikantvlei 190, near Kleinsee, Namaqualand district. EIA Report for Milnex Consultants, Schweizer-Reneke.

DREYER, J. 2011. First phase archaeological & heritage assessment of the proposed diamond mining developments at Brazil 329, Kleinsee, Namaqualand district. EIA Report for Geo-Rock International Consultants, Kimberley.

DREYER, J. 2011. Archaeological & heritage investigation of the proposed MTN cell phone mast at Brekkierie near Kenhardt, Northern Cape. EIA Report for Spatial Solutions Incorporated Environmental Consultants, Bloemfontein.

DREYER, J. 2012. First phase archaeological & heritage assessment of the proposed diamond mining developments at Portions 3 & 4 and the Remainder of Grootderm 10, near Alexander Bay, Namaqualand district. EIA Report for Rock Runner Environmental Consultants, Kimberley.

DREYER, J. 2012. First phase archaeological and heritage assessment of the solid waste transfer station site at Augrabies, Northern Cape. EIA Report for MDA Environmental Consultants, Bloemfontein.

DREYER, J. 2012. First phase archaeological and heritage assessment of the solid waste disposal site at Curries Camp near Upington, Northern Cape. EIA Report for MDA Environmental Consultants, Bloemfontein.

ERASMUS, P.A., SEREKOANE, M.J. & SAULS, G. 2003. Life Histories of the People of the Riemvasmaak Community in the Northern Cape. Department of Anthropology, University of the Free State, Bloemfontein. Report for The Sol Plaatje Educational Trust, 32 Angel Street, Kimberley, 8301, South Africa.

HUMPHREYS, A.J.B. 1986. Searching for the past. Cape Town: David Philip.

MORRIS, D. 1988. Engraved in place and time: a review of variability in the rock art of the Northern Cape and Karoo. South African Archaeological Bulletin 43(148):109-121.

MORRIS, D. 1990a. 'Etchings' and 'Intaglios' in the Upper Karoo: Part 1: The engravings at Springbok Oog. In Beaumont, P.B. & Morris, D. Guide to archaeological sites in the Northern Cape. Kimberley: McGregor Museum.

MORRIS, D. 1990b. 'Etchings' and 'Intaglios' in the Upper Karoo: Part 2: Engravings on Jagtpan and adjacent farms. In Beaumont, P.B. & Morris, D. Guide to archaeological sites in the Northern Cape. Kimberley: McGregor Museum.

PISTORIUS, J.C.C. 1994. Eskom Archaeological Site Identification Guide. Johannesburg: Eskom.

ROSENTHAL, E. (n.d.). The River of Diamonds. Cape Town: Howard Timmins.

SMITH, A.B. (Ed.). 1995. Einiqualand: Studies of the Orange River Frontier. Cape Town: UCT Press.

SOHNGE, P.G. VISSER, D.J.L. AND VAN RIET LOWE, C. 1937. The geology and archaeology of the Vaal River Basin. Pretoria: Government Printer.

WEBLEY, L. 2012. Desktop Heritage Impact Assessment: Proposed 1,5ha extension of gravel mine, Portion 2 of the farm Aroams 57, near Aggeneys, Northern Cape Province. HIA report for Greenmined Environmental, Somerset West.

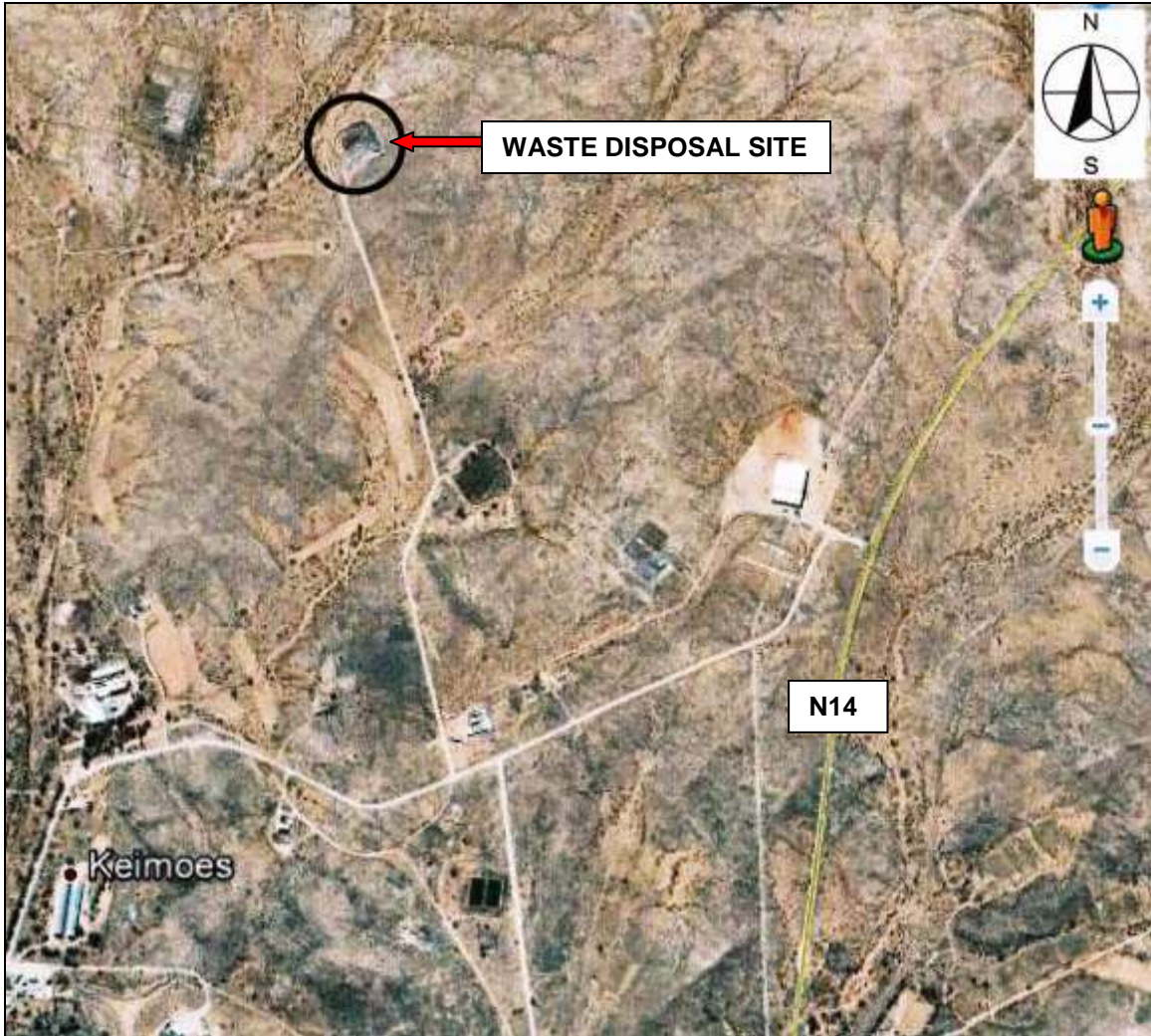
LIST OF ILLUSTRATIONS



Map 1 N14 main road between Kakamas and Upington past Keimoes, Northern Cape.



Fig.1 Guardhouse at existing waste disposal site at Keimoes, Northern Cape.



Map 2 Locality of waste disposal site at Curries Camp near Keimoes, Northern Cape (2820).



Fig.2 Existing waste disposal site at Keimoes.



Fig.3 Soil works at existing waste disposal site at Keimoes, Northern Cape.



Fig.4 Point B at existing waste disposal site at Keimoes.



Fig.5 Point B at the existing waste disposal site, Keimoes, Northern Cape.



Fig.6 Point B at the existing waste disposal site, Keimoes, Northern Cape.