

Appendix D-4: Archaeological & Cultural Heritage



EASTERN CAPE

HERITAGE CONSULTANTS CC

REG. NO: 2006/088345/23

P.O.BOX 689 ♦ JEFFREYS BAY ♦ 6330 ♦ FAX: 042 296 0399 ♦ CELL: 072 800 6322
E-MAIL: kobusreichert@yahoo.com

*Encephalartos
longifolius*

2 November 2022

CEN Integrated Environmental Management Unit
140 Kruger Gardens
Admiralty Way
Summerstrand
Gqeberha (Port Elizabeth)
6001

For attention: Ms. Lucille Behrens

INITIAL ARCHAEOLOGICAL SITE VERIFICATION AND REPORT FOR THE PROPOSED DEVELOPMENT OF THE GREENBUSHES FARM SOLAR PV FACILITY ON PORTION 8 (PORTION OF PORTION 3) OF THE FARM KUYGA NO. 8, AS WELL AS ELECTRICAL TRANSMISSION LINES IN WARD 40 IN GREENBUSHES, GQEBERHA (PORT ELIZABETH), NELSON MANDELA BAY MUNICIPALITY, EASTERN CAPE PROVINCE.

CEN Integrated Environmental Management appointed Eastern Cape Heritage Consultants cc to do an initial site verification for the above project.

The site has been classified as having a low archaeological/cultural sensitivity by the Department of Forestry, Fisheries & Environment (DFFE) on-line screening tool. No specific protocol has been developed for archaeology, and the "General Requirements" protocol applies. In summary, the protocol indicates that the following must be done:

1. Step 1: initial site verification – confirm sensitivity rating (or indicate otherwise)
2. Step 2:
 - a. If site verification confirms high sensitivity, do specialist study and comply with Appendix 6 of the EIA Regulations (i.e. requirements for specialist studies)
 - b. If site verification shows that the site is not high sensitivity, compile an **Archaeological/Cultural Heritage Compliance Statement**

A site visit was conducted by an archaeologist on 19 October 2022 and it has been concluded that the site is of **low cultural sensitivity** - See attached Letter of Recommendation (with conditions).

Archaeological/Cultural Heritage Compliance Statement

Should any archaeological remains be exposed during the development all work must cease in the immediate area and it must be reported to the Albany Museum (Tel: 046 622 2312) or to the Eastern Cape Provincial Heritage Resources Authority (Tel: 043 492 1940/1/2), so that a systematic and professional investigation can be undertaken.

Best Regards

Kobus Reichert

A LETTER OF RECOMMENDATION (WITH CONDITIONS) FOR THE EXEMPTION OF A FULL PHASE 1 ARCHAEOLOGICAL IMPACT ASSESSMENT FOR THE PROPOSED DEVELOPMENT OF THE GREENBUSHES FARM SOLAR PV FACILITY ON PORTION 8 (PORTION OF PORTION 3) OF THE FARM KUYGA NO. 8, AS WELL AS ELECTRICAL TRANSMISSION LINES IN WARD 40 IN GREENBUSHES, GQEBERHA (PORT ELIZABETH), NELSON MANDELA BAY MUNICIPALITY, EASTERN CAPE PROVINCE



Prepared for: CEN Integrated Environmental Management Unit
140 Kruger Gardens
Admiralty Way
Summerstrand
Gqeberha (Port Elizabeth)
6001
Cell: 082 922 1645
Contact person: Ms. Lucille Behrens
Email: lucille@environmentcen.co.za

Compiled by: Mr. Kobus Reichert

On behalf of: Eastern Cape Heritage Consultants cc
Reg. no: 2006/088345/23
P.O. Box 689
Jeffreys Bay
6330
Cell: 072 800 6322
Email: kobusreichert@yahoo.com

Date: November 2022

PROJECT INFORMATION

Eastern Cape Heritage Consultants cc has been appointed by CEN Integrated Environmental Management Unit to conduct a Phase 1 Archaeological Impact Assessment (AIA) for the proposed development of the Greenbushes Solar PV Facility on the Remainder of Portion 8 (Portion of Portion 3) of the Farm Kuyga No. 8, as well as electrical transmission lines in Ward 40 in Greenbushes, Gqeberha (Port Elizabeth), Nelson Mandela Bay Municipality, Eastern Cape Province.

The proposed project entails the development of a Solar PV Facility to generate approximately 15MW and associated infrastructure for Battery Storage and transmission of electricity to substations (Greenbushes Substation and/or Greenbushes Industrial Substation). The extent for the Solar PV Facility and associated infrastructure is approximately 18 hectares.

Applicant

Greenbushes RE Project SPV (Pty) Ltd.

Consultant

CEN Integrated Environmental Management Unit
140 Kruger Gardens
Admiralty Way
Summerstrand
Gqeberha (Port Elizabeth)
6001
Cell: 082 922 1645
Contact person: Ms. Lucille Behrens
Email: lucille@environmentcen.co.za

Purpose of the study

The purpose of the study was to conduct a Phase 1 Archaeological Impact Assessment (AIA) for the proposed project and the associated activities, to describe and evaluate:

- the importance of possible archaeological sites, features and materials,
- the potential impact of the development on these resources and,
- to propose recommendations to minimize possible damage to these resources.

Site and Location

The proposed development area is located within the 1:50 000 topographic reference map 3325CD & 3425BA Uitenhage (Map 1). The Remainder of Portion 8 (Portion of Portion 3) of the Farm Kuyga No. 8 is located approximately 18 kilometres from the Gqeberha (Port Elizabeth CBD (Map 2). The site can be accessed via a private road that turns off from the R102 road in Greenacres as well as the Rooikrans Way gravel road that is located adjacent to the eastern boundary of the property. The proposed area for the Greenbushes Solar PV Facility consist of a relatively flat area that is covered mostly with dense grass, trees and other vegetation (Figure 1) . There is evidence of wood collecting as well as the illegal dumping of waste on certain areas of the property. The electrical transmission lines traverse a number of erven and falls mainly within the road reserve of Cape Road (R102). The electrical transmission line to Greenbushes Substation (located in Seaview Road) and/or Greenbushes Industrial Substation (Located at the Greenbushes Business Park) falls in Ward 40, in the Nelson Mandela Bay Municipality (Fig. 2).

General GPS readings were taken at: 33.55.427S, 25. 24.823E (proposed Greenbushes Solar PV Facility), 33.55.690S, 25.25.297E (Greenbushes Substation) and 33.55.753S, 25.26.048 (Greenbushes Business Park).

The following properties will be affected by the proposed alignment of the electrical transmission lines:

Portion 8 of the Farm Kuyga No. 8	Erf 56 Greenbushes
Portion 3 of the Farm Kuyga No. 8	Erf 160 Greenbushes
Portion 17 of the Farm Kuyga No. 8	Erf 123 Greenbushes
Portion 156 of the Farm Kuyga No.8	

Relevant Archaeological Impact Assessments

- Binneman, J. 2014. A phase 1 archaeological impact assessment for the proposed integrated residential development and associated infrastructure in the Hunters Retreat area, Port Elizabeth, Nelson Mandela Bay Municipality, Eastern Cape Province. Prepared for CEN Integrated Environmental Management Unit. Port Elizabeth. Eastern Cape Heritage Consultants cc. Jeffreys Bay.
- Binneman, J. 2011. A phase 1 archaeological heritage impact assessment for the proposed residential development on the remainder of Erf 982, Parsonsvei , Port Elizabeth, Nelson Mandela Bay Municipality, Eastern Cape Province. Prepared for CEN Integrated Environmental Management Unit. Port Elizabeth. Eastern Cape Heritage Consultants cc. Jeffreys Bay.
- Binneman, J. 2010. A letter of recommendation (with conditions) for the exemption of a full phase 1 archaeological heritage impact assessment for the proposed hard rock (quartzite) quarry on Erf 1, Parsonsvei, Port Elizabeth, Nelson Mandela Bay Municipality, Eastern Cape Province. Prepared for Stellenryck Environmental Solutions. Port Elizabeth. Eastern Cape Heritage Consultants cc. Jeffreys Bay.
- Binneman, J. and Reichert, K. 2021. A letter of recommendation (with conditions) for the exemption of a full phase 1 archaeological heritage impact assessment for the proposed development of a Solar Photovoltaic (PV) facility on a portion of Erf 1, Parsonsvei, Gqeberha within the Nelson Mandela Bay Municipality, Eastern Cape. Prepared for: JG Afrika. Greenacres. Eastern Cape Heritage Consultants cc. Jeffreys Bay.
- Reichert, K. 2022a. A letter of recommendation (with conditions) for the exemption of a full phase 1 archaeological heritage impact assessment for the proposed development of Erven 984 and 1134, Parsonsvei, Nelson Mandela Bay Municipality, Eastern Cape Province. Prepared for Engineering Advice & Services (Pty) Ltd. Humewood. Eastern Cape Heritage Consultants cc. Jeffreys Bay.
- Reichert, K. 2022b. A letter of recommendation (with conditions) for the exemption of a full phase 1 archaeological impact assessment for the proposed expansion of the existing Port Elizabeth Rifle and Pistol Club on Portions 0 and 5 of Erf No. 8 in Greenbushes, Gqeberha (Port Elizabeth), Nelson Mandela Bay Municipality, Eastern Cape. Prepared for BlueLeaf Environmental Consulting (Pty) Ltd. Sunridge Park. Eastern Cape Heritage Consultants cc. Jeffreys Bay.
- Reichert, K. 2022c. A letter of recommendation (with conditions) for the exemption of a full phase 1 archaeological impact assessment for the proposed development of a Solar Photovoltaic (PV) Facility on Erf 77 in Greenbushes, Gqeberha (Port Elizabeth), Nelson Mandela Bay Municipality, Eastern Cape Province. Prepared for Habitat Link Consulting. Mount Croix. Eastern Cape Heritage Consultants cc. Jeffreys Bay.
- Van Ryneveld, K. 2007. Phase 1 archaeological impact assessment. The Hopewell Conservation Project, Greenbushes, Port Elizabeth, South Africa. Prepared for SRK Consulting. Port Elizabeth. Archaeomaps Archaeological Consultancy. Danhof.

ARCHAEOLOGICAL INVESTIGATION

Methodology and results

Google aerial images as well as previous heritage reports related to the study area were studied prior to the investigation. The investigation was conducted on foot and by vehicle by an archaeologist. GPS readings were taken with a Garmin and all important features were digitally recorded. The archaeological visibility was poor due to the dense grass and other vegetation and no archaeological sites/materials were observed within the proposed development area for the Solar PV Facility. Footpaths were followed where possible and open areas were inspected. Molehills that occur on the property were also checked for the presence of possible subsurface archaeological material. The proposed alignment for the electrical transmission lines falls mostly within the road reserve of Cape Road (R102) in an area that has been disturbed in the past by other activities. In general, the area for the proposed development appears to be of low archaeological sensitivity and it is unlikely that any archaeological remains of any significance will be found *in situ* or exposed during the development. There are no known graves or buildings / structures older than 60 years on the property or along the proposed alignment for the electrical transmission lines.



Figure 1. General views of the proposed development area for the Greenbushes Farm Solar PV facility on Portion 8 (Portion of Portion 3) of the Farm Kuyga No. 8 in Greenbushes, Gqeberha (Port Elizabeth), Nelson Mandela Bay Municipality, Eastern Cape Province.



Figure 2. General views of the proposed alignment of the electrical transmission lines that traverses several erven in Ward 40, Greenbushes, Gqeberha (Port Elizabeth). The proposed transmission line alignment (top and middle left image) that will link with the Greenbushes Substation (middle right image), and the transmission line alignment (bottom left image) that will link with the Greenbushes Industrial Substation located at the Greenbushes Business Park (bottom right image)

DISCUSSION AND CONDITIONS

No archaeological sites/materials were observed during the investigation of the proposed study area. Although it is unlikely that archaeological remains will be found *in situ*, there is always a possibility that human remains and/or other archaeological and historical material may be uncovered during the development.

The main impact on possible archaeological sites/remains will be the physical disturbance of the material and its context. Should such material be exposed then work must cease in the immediate area and it must be reported to the archaeologist at the Albany Museum in Makhanda (Grahamstown) (Tel: 046 622 2312) or to the Eastern Cape Provincial Heritage Resources Authority (Tel.: 043 492 1940/1/2), so that a systematic and professional investigation can be undertaken. Sufficient time should be allowed to remove/collect such material (See Appendix B for a list of possible archaeological sites that maybe found in the area). The applicant must finance the costs should additional investigations be required.

LETTER OF RECOMMENDATION

It is recommended that the proposed development of the Greenbushes Solar PV Facility on the Remainder of Portion 8 (Portion of Portion 3) of the Farm Kuyga No. 8, as well as electrical transmission lines in Ward 40 in Greenbushes, Gqeberha (Port Elizabeth), Nelson Mandela Bay Municipality, Eastern Cape Province, is exempted from a full Phase 1 Archaeological Heritage Impact Assessment. The proposed development area appears to be of **low archaeological sensitivity**, and it is therefore unlikely that any significant archaeological remains will be found on the property. The proposed development may therefore proceed as planned.

Note: This letter of recommendation only exempts the proposed development from a full Phase 1 Archaeological Heritage Impact Assessment, but not for other heritage impact assessments. It must also be clear that this letter will be assessed by the relevant heritage resources authority. The final decision rests with the heritage resources authority, which should give a permit or a formal letter of permission for the destruction of any cultural sites.

Section 35 of the National Heritage Resources Act, No. 25 of 1999 (see Appendix A) requires a full Heritage Impact Assessment (HIA) in order that all heritage resources, that is, all places or objects of aesthetics, architectural, historic, scientific, social, spiritual linguistic or technological value or significance are protected. Thus, any assessment should make provision for the protection of all these heritage components, including archaeology, shipwrecks, battlefields, graves, and structures older than 60 years, living heritage, historical settlements, landscapes, geological sites, palaeontological sites and objects.

GENERAL REMARKS AND CONDITIONS

It must be emphasized that this letter of recommendation for the exemption of a full Phase 1 archaeological heritage impact assessment is based on the visibility of archaeological sites/material and may not therefore, reflect the true state of affairs. Sites and material may be covered by soil and vegetation and will only be located once this has been removed. In the unlikely event of such finds being uncovered, (during any phase of the mining activities), it must be reported to the archaeologist at the Albany Museum in Makhanda (Grahamstown) (Tel: 046 622 2312) or to the Eastern Cape Provincial Heritage Resources Authority (Tel.: 043 492 1940/1/2) immediately. The developer must finance the costs should additional studies be required as outlined above. The consultant is responsible to forward this report to the relevant Heritage Authority for assessment, unless alternative arrangements have been made with the specialist to submit the report.

APPENDIX A: brief legislative requirements

Parts of sections 34, 35(4), 36(3) and 38(1) (8) of the National Heritage Resources Act, No. 25 of 1999 apply:

Structures

34 (1) No person may alter or demolish any structure or part of a structure which is older than 60 years without a permit issued by the relevant provincial heritage resources authority.

Archaeology, palaeontology and meteorites

35 (4) No person may, without a permit issued by the responsible heritage resources authority—

- (a) destroy, damage, excavate, alter, deface or otherwise disturb any archaeological or palaeontological site or any meteorite;*
- (b) destroy, damage, excavate, remove from its original position, collect or own any archaeological or palaeontological material or object or any meteorite;*
- (d) bring onto or use at an archaeological or palaeontological site any excavation equipment or any equipment which assist in the detection or recovery of metals or archaeological and palaeontological material or objects, or use such equipment for the recovery of meteorites.*

Burial grounds and graves

36. (3) (a) No person may, without a permit issued by SAHRA or a provincial heritage resources authority—

- (a) destroy, damage, alter, exhume or remove from its original position or otherwise disturb the grave of a victim of conflict, or any burial ground or part thereof which contains such graves;*
- (b) destroy, damage, alter, exhume, remove from its original position or otherwise disturb any grave or burial ground older than 60 years which is situated outside a formal cemetery administered by a local authority; or*
- (c) bring onto or use at a burial ground or grave referred to in paragraph (a) or (b) any excavation equipment, or any equipment which assists in the detection or recovery of metals.*

Heritage resources management

38. (1) Subject to the provisions of subsections (7), (8) and (9), any person who intends to undertake a development categorized as –

- (a) the construction of a road, wall, powerline, pipeline, canal or other similar form of linear development or barrier exceeding 300m in length;*
- (b) the construction of a bridge or similar structure exceeding 50m in length;*
- (c) any development or other activity which will change the character of the site –*
 - (i) exceeding 5000m² in extent, or*
 - (ii) involving three or more erven or subdivisions thereof; or*
 - (iii) involving three or more erven or divisions thereof which have been consolidated within the past five years; or*
 - (iv) the costs of which will exceed a sum set in terms of regulations by SAHRA, or a provincial resources authority;*

- (d) the re-zoning of a site exceeding 10 000m² in extent; or*
- (e) any other category of development provided for in regulations by SAHRA or a provincial heritage resources authority, must as the very earliest stages of initiating such a development, notify the responsible heritage resources authority and furnish it with details regarding the location, nature and extent of the proposed development.*

APPENDIX B: IDENTIFICATION OF ARCHAEOLOGICAL FEATURES AND MATERIAL FROM INLAND AREAS: guidelines and procedures for developers

Human Skeletal material

Human remains, whether the complete remains of an individual buried during the past, or scattered human remains resulting from disturbance of the grave, should be reported. In general, the remains are buried in a flexed position on their sides but are also found buried in a sitting position with a flat stone capping or in ceramic pots. Developers are requested to be on the alert for these features and remains.

Freshwater mussel shell middens

Freshwater mussels are found in the muddy banks of rivers and streams and were collected by people in the past as a food resource. Freshwater mussel shell middens are accumulations of mussel shell and are usually found close to rivers and streams. These shell middens frequently contain stone tools, pottery, bone, and occasionally human remains. Shell middens may be of various sizes and depths, but an accumulation which exceeds 1 m² in extent, should be reported to an archaeologist.

Fossil bone

All concentrations of bones, whether fossilized or not, should be reported.

Stone artefacts

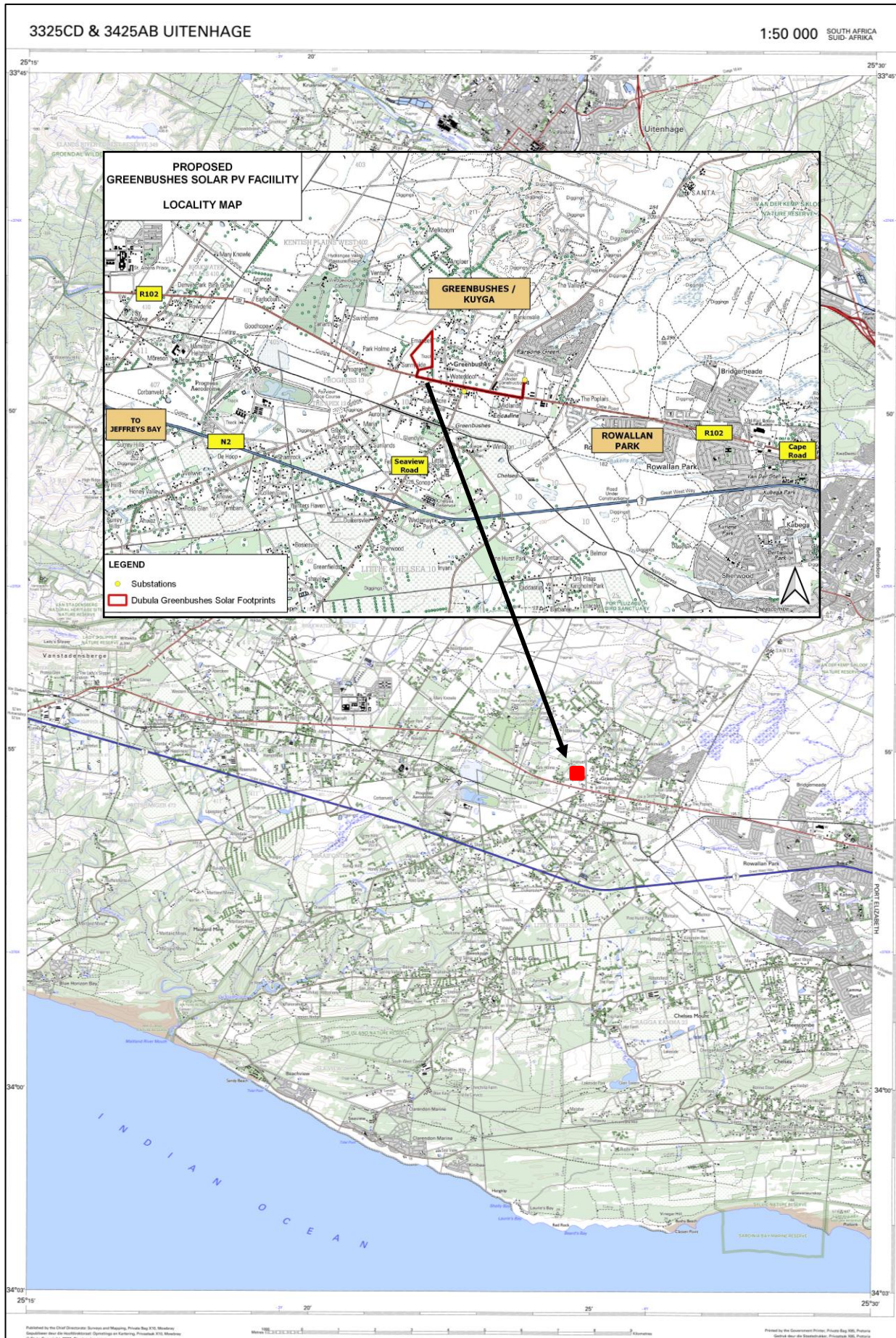
These are difficult for the layman to identify. However, large accumulations of flaked stones which do not appear to have been distributed naturally should be reported. If the stone tools are associated with bone remains, development should be stopped immediately, and archaeologists notified.

Stone features and platforms

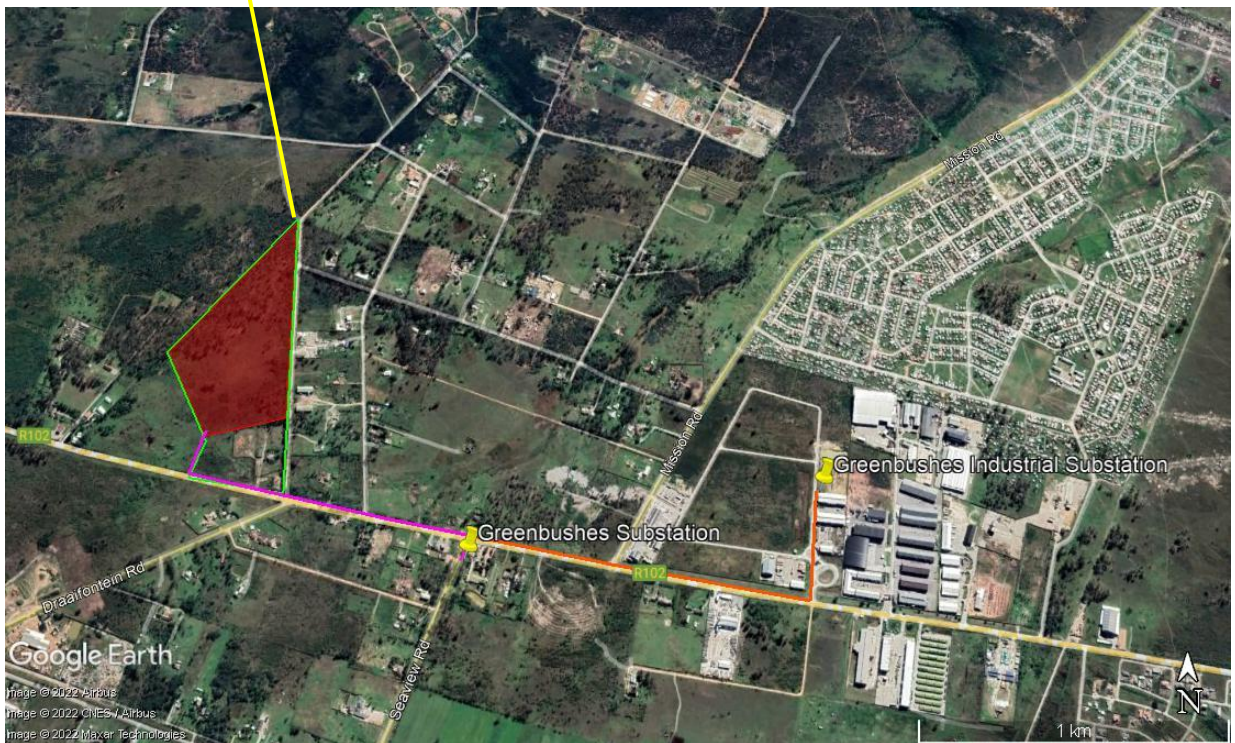
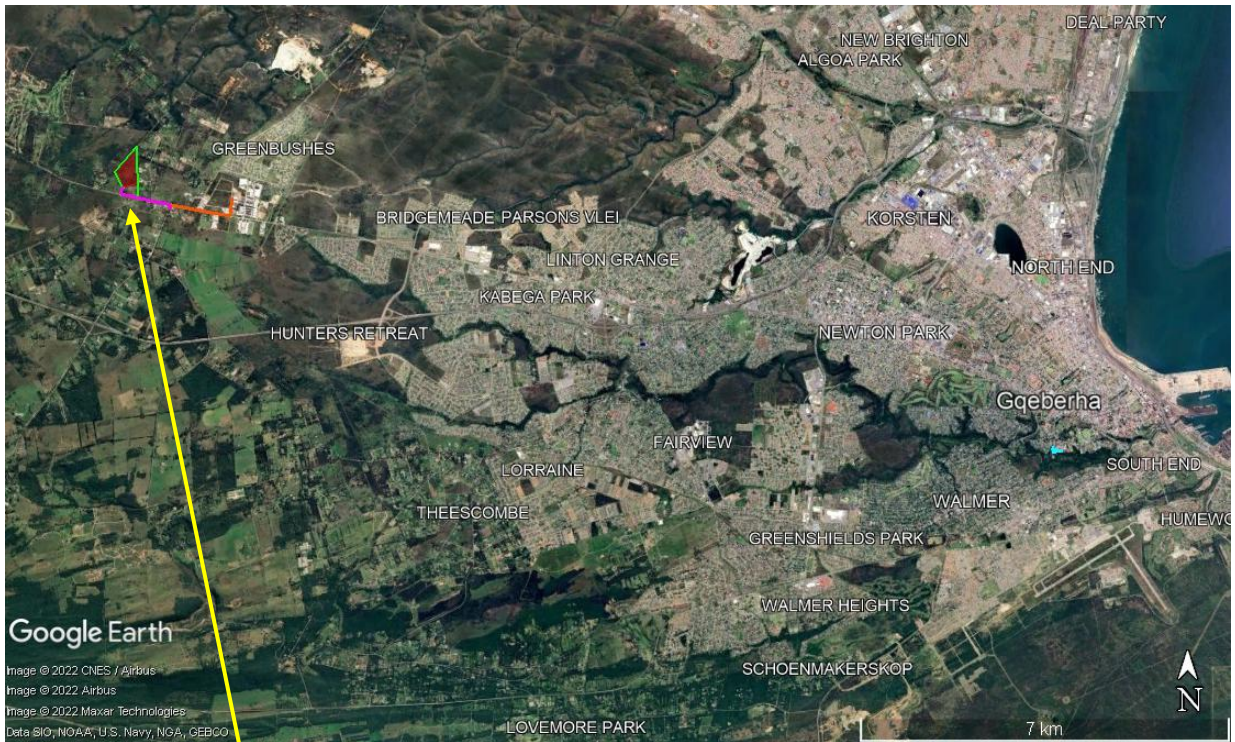
These occur in different forms and sizes, but easily identifiable. The most common are an accumulation of roughly circular fire cracked stones tightly spaced and filled in with charcoal. They are usually 1-2 metres in diameter and may represent cooking platforms. Others may resemble circular single row cobble stone markers. These occur in different sizes and may be the remains of wind breaks or cooking shelters.

Historical artefacts or features

These are easy to identify and include foundations of buildings or other construction features and items from domestic and military activities.



Map 1. 1:50 000 Topographic maps indicating the approximate location of the proposed development area. The proposed area for the Solar PV Facility and the alignment of the electricity transmission lines are indicated in red.



Map 2. Aerial views of the general location of the proposed area for the development of the Greenbushes Farm Solar PV Facility on Portion 8 (Portion of Portion 3) of the Farm Kuyga No. 8 (indicated in red, the property boundary is outlined in green). The alignment of the proposed electricity transmission line that will link with the Greenbushes Substation is indicated with the light purple line and the proposed electricity transmission line that will link with the Greenbushes Industrial Substation with the orange line.

DETAILS OF SPECIALIST AND DECLARATION OF INTEREST IN TERMS OF REGULATIONS 12 AND 13 OF THE AMENDMENTS TO THE ENVIRONMENTAL IMPACT ASSESSMENT REGULATIONS, 2014 AS AMENDED.

	(For official use only)
File Reference Number:	
NEAS Reference Number:	
Date Received:	

Application for environmental authorization in terms of the National Environmental Management Act, 1998 (Act No. 107 of 1998), as amended and the Amendments to the Environmental Impact Assessment Regulations, 2014. This form is valid as of 6 January 2021.

PROJECT TITLE

PROPOSED GREENBUSHES SOLAR PV FACILITY, NELSON MANDELA BAY MUNICIPALITY, EASTERN CAPE

SPECIALIST ¹	Eastern Cape Heritage Consultants cc		
Contact person:	Mr. Kobus Reichert		
Postal address:	P.O Box 689, Jeffreys Bay		
Postal code:	6330	Cell:	072 800 6322
Telephone:	n/a	Fax:	n/a
E-mail:	kobusreichert@yahoo.com		
Professional affiliation(s) (if any)	Society for Africanist Archaeologists (SAfA)		

Project Consultant:	CEN IEM UNIT		
Contact person:	Lucille Behrens		
Postal address:	140 Kruger Gardens, 62 Admiralty Way, Summerstrand		
Postal code:	6001	Cell:	082 922 1645
Telephone:	082 320 3111	Fax:	0865042549
E-mail:	lucille@environmentcen.co.za		

4.2 The SPECIALIST

I, **Kobus Reichert**, declare that –

General declaration:

- I act as the independent Specialist in this application
- I will perform the work relating to the application in an objective manner, even if this results in views and findings that are not favourable to the applicant
- I declare that there are no circumstances that may compromise my objectivity in performing such work;
- I have expertise in conducting environmental impact assessments, including knowledge of the Act, regulations and any guidelines that have relevance to the proposed activity;
- I will comply with the Act, regulations and all other applicable legislation;
- I will take into account, to the extent possible, the matters listed in regulation 8 of the regulations when preparing the application and any report relating to the application;
- I have no, and will not engage in, conflicting interests in the undertaking of the activity;
- I undertake to disclose to the applicant and the competent authority all material information in my possession that reasonably has or may have the potential of influencing - any decision to be taken with respect to the application by the competent authority; and - the objectivity of any report, plan or document to be prepared by myself for submission to the competent authority;
- I will ensure that information containing all relevant facts in respect of the application is distributed or made available to interested and affected parties and the public and that participation by interested and affected parties is facilitated in such a manner that all interested and affected parties will be provided with a reasonable opportunity to participate and to provide comments on documents that are produced to support the application; N/A
- I will ensure that the comments of all interested and affected parties are considered and recorded in reports that are submitted to the competent authority in respect of the application, provided that comments that are made by interested and affected parties in respect of a final report that will be submitted to the competent authority may be attached to the report without further amendment to the report; N/A
- I will keep a register of all interested and affected parties that participated in a public participation process N/A; and
- I will provide the competent authority with access to all information at my disposal regarding the application, whether such information is favourable to the applicant or not
- all the particulars furnished by me in this form are true and correct;

- will perform all other obligations as expected from an environmental assessment practitioner in terms of the Regulations; and
- I realise that a false declaration is an offence and is punishable in terms of section 24F of the Act.

Disclosure of Vested Interest (delete whichever is not applicable)

- I do not have and will not have any vested interest (either business, financial, personal or other) in the proposed activity proceeding other than remuneration for work performed in terms of the Amendments to Environmental Impact Assessment Regulations, 2014 as amended.
- ~~I have a vested interest in the proposed activity proceeding, such vested interest being:~~

J. lew...

Signature of the environmental assessment practitioner:

Eastern Cape Heritage Consultants cc

Name of company:

25 November 2022

Date:

Signature of the Commissioner of Oaths:

7228082-4
 D HOUGH *DH*

2022-11-25

Date:

CONSTABLE

Designation:

¹ Curriculum Vitae (CV) attached

Official stamp (below).



Annexure 1

CV

CV ATTACHED

Abbreviated Curriculum Vitae 2021

NAME : Kobus Reichert

DATE OF BIRTH : 16 September 1967

ID NUMBER : 6709165176082

NATIONALITY : South African

AGE : 54

BUSINESS ADDRESS : Eastern Cape Heritage Consultants cc
Reg. no: 2006/088345/23
6 Graceland Villas
Waratah street, Wavecrest
Jeffreys Bay
6330

POSTAL ADDRESS : P.O Box 689
Jeffreys Bay
6330

TELEPHONE NO. : 042 - 2960 399

CELLPHONE NO. : 072 800 6322

E-MAIL : kobusreichert@yahoo.com

HOME LANGUAGE : Afrikaans

OTHER LANGUAGES : English

DRIVING LICENCE : CODE EB

EDUCATIONAL QUALIFICATIONS

SCHOOL : Hoër Volksskool - Potchefstroom

STANDARD PASSED : Matric with full exemption - 1985

TERTIARY QUALIFICATIONS

UNIVERSITY : Potchefstroom University (1991)

DEGREE : B. Proc

UNIVERSITY : UNISA (2015)

DEGREE : BA Honours (Archaeology)

PREVIOUS POSITIONS

NAME OF EMPLOYER : Department of Correctional Services

POSITION : Provincial Head: Legal Services (Eastern Cape)

Resigned from the Department in 1998

NAME OF EMPLOYER : Eastern Cape Heritage Consultants cc (Owner)

POSITION : Heritage Consultant

Obtained BA (Honours) degree in Archaeology in 2015.

CURRENT POSITION

OCCUPATION : Archaeologist (2015 to present)
Owner: Eastern Cape Heritage Consultants cc
- Reg no. 2006/088345/23)

EXPERIENCE: Eastern Cape Heritage Consultants cc was established in 2006. Dr. Johan Binneman provided specialist archaeological services to the company and I assisted him with fieldwork and the conducting of Phase 1 Archaeological Impact Assessments (AIA's) from 2006 -2014. After I obtained my Honours degree in Archaeology in 2015 I became the co-author of more than 150 Phase 1 AIA and other archaeological reports until present. Dr. Binneman has got 40 years' research experience of the archaeology of the eastern and southern Cape. This includes the fields of Earlier, Middle and Later Stone Age, Iron Age, Rock Art and Historical Archaeology. I have been in the privileged position to have him as a mentor over a period of 16 years and the experience gained during this period equipped me with the necessary skills and knowledge to conduct Phase1 Archaeological Impact Assesments and other archaeological work.

SELECTED PREVIOUS PROJECTS

- : Heritage Impact Assessment for the Baviaanskloof Mega Reserve: 2006
- : Phase 1 AIA: Kouga Development Agency Project, Jeffreys Bay, Kouga Municipality: 2007
- : Phase 1 AIA: Sarah Baartman Project, Hankey: 2008
- : Heritage Impact Assessment for the Coega Industrial Development Zone: 2010
- : Phase 1 AIA: Oyster Bay Wind Energy Facility: 2011
- : Phase 1 AIA: Deep River Wind Energy Facility, Kouga Municipality: 2011
- : Phase 1 AIA: Jeffreys Bay Wind Farm , Kouga Municipality: 2012
- : Phase 1 AIA: Cookhouse South Wind Farm, Blue Crane Route Municipality: 2013
- : Archaeological Walkthrough: Msenge Emoyeni Wind Energy Facility, Bedford: 2014
- : Archaeological Walkthrough: 132 KV power line from the Melkhout to Diep Rivier substations, Kouga Municipality: 2015
- : Phase 1 AIA: 132 KV power line for the Golden Valley Wind Farm near Cookhouse, Blue Crane Route Municipality: 2016
- : Archaeological desktop study: Impofu Wind Energy Facility, Kouga Municipality: 2017
- : Archaeological Walkthrough: Expansion of agricultural activities on the Farm Langebos, Sundays River Valley Municipality: 2018
- : Archaeological inspection: Access roads and test pits for the aquaculture and gas to power project in Zone 10 of the Coega Development Corporation (CDC), Nelson Mandela Bay Municipality: 2019
- : Archaeological monitoring: vegetation clearing and construction activities for the APLI project in Zone 1 of the CDC, Nelson Mandela Bay Municipality: 2020
- : Phase 1 AIA: Infrastructure development and upgrades within the Great Fish River Nature Reserve, Makana, Raymond Mhlaba and Ngqushwa Municipalities: 2021

AWARDS:

The Eastern Cape Premier’s Award for Heritage Conservation (2007)

The Eastern Cape MEC for Sport, Recreation, Arts & Culture’s Award for Museum and Heritage (2016)

MEMBERSHIP OF PROFESSIONAL BODIES:

Society of Africanist Archaeologists (SAfA) - 2012 to present.

INTERNATIONAL CONFERENCES ATTENDED:

2008 Association of South African Professional Archaeologists (ASAPA), 25 - 29 March, Cape Town.

2012 Society of Africanist Archaeologists (SAfA), 25 - 29 June, University of Toronto, Canada (co-author of a paper presented by Dr. Binneman)

CONSULTANT PROJECTS - Clients include:

Wilderness Foundation

Coega Development Corporation

Eskom

CSIR

Eastern Cape Parks & Tourism Agency (ECPTA)

WBHO

Wind Energy Developers in the Eastern Cape