

**To whom it may concern**

**LETTER FOR HIA EXEMPTION REQUEST: PROPOSED DEVELOPEMNT OF A SHOPPING CENTRE AT HA-RAVELE, LIMPOPO PROVINCE**

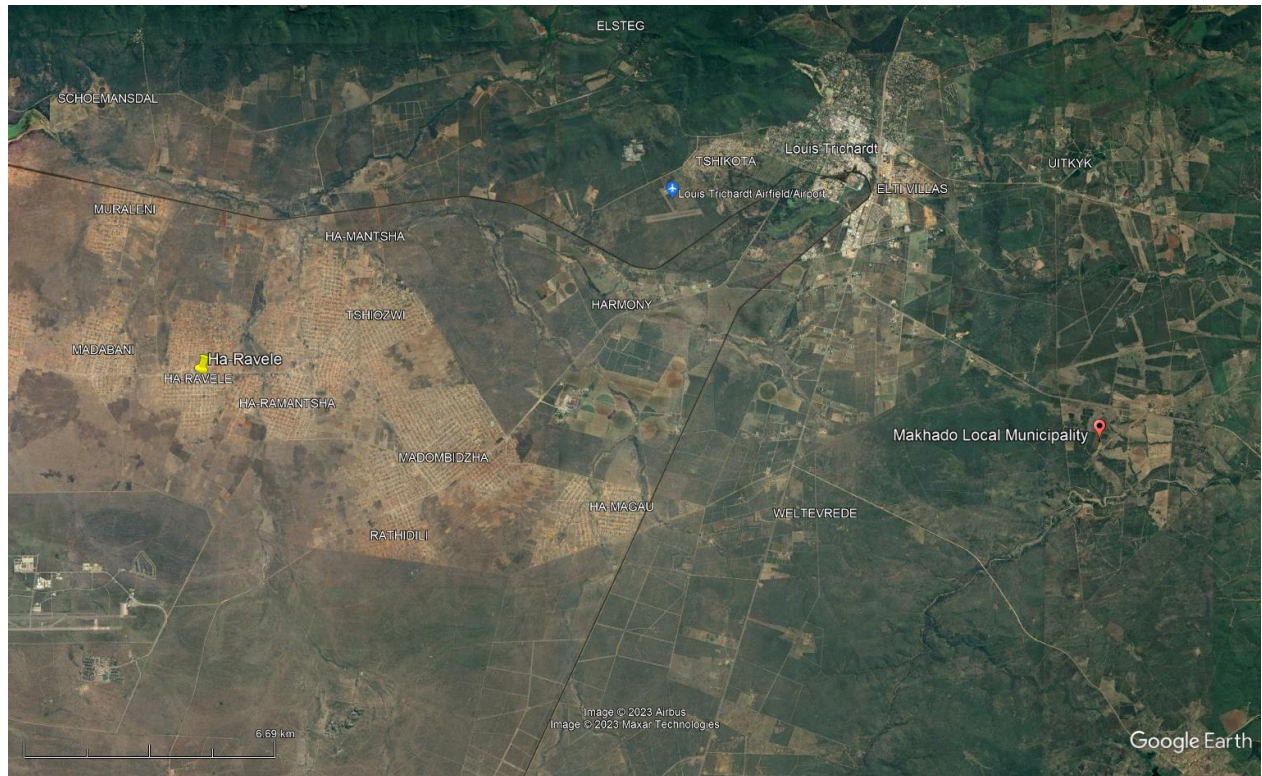
The above-mentioned project refers. Archaeos CC was contracted by Optimprop to write a motivation for an exemption for doing a Heritage Impact Assessment (HIA) on the property. The project site is located at Ha-Ravele, which lies approximately 25 km west of Makhado (Louis Trichardt) in the Limpopo Province (Figure 1-4).

The project site is on Erf 958, Hapitella Village, Ha-Ravele. The project consists of the development of a shopping centre (Figure 5).

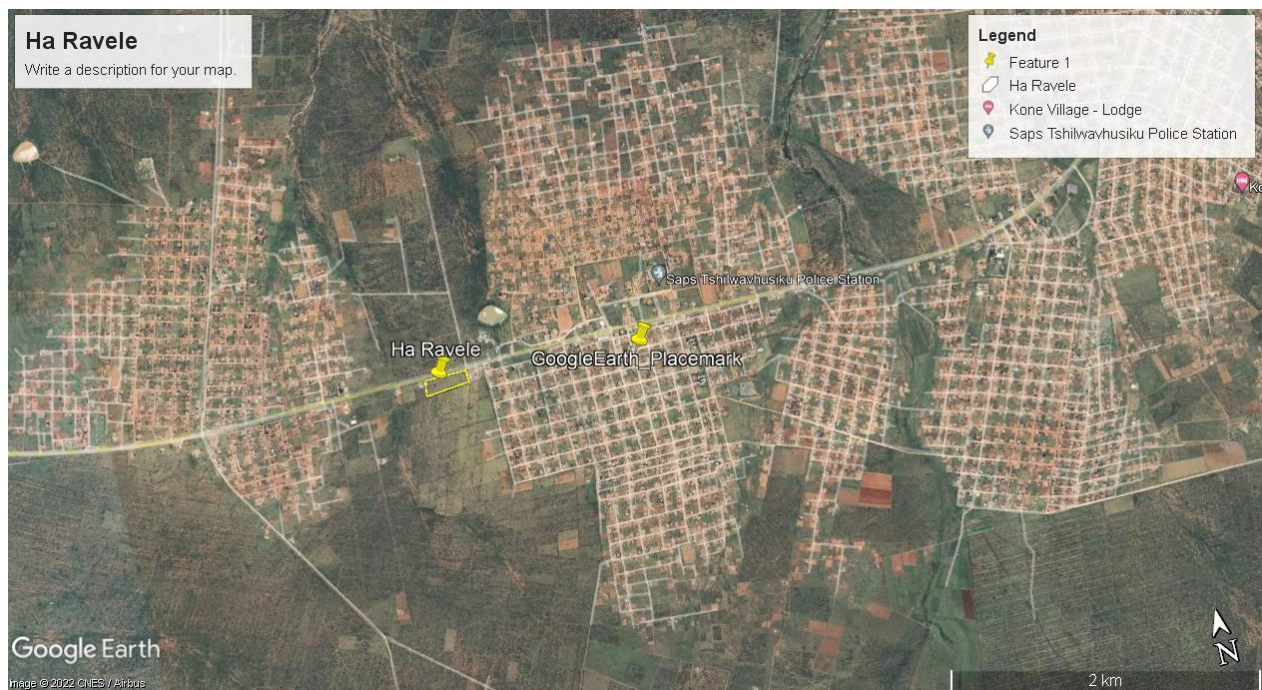


**Figure 1: Location of Makhado in the Limpopo Province.**





**Figure 2: Location of the site in relation to Makhado.**



**Figure 3: Location of the site in Ha-Ravele.**

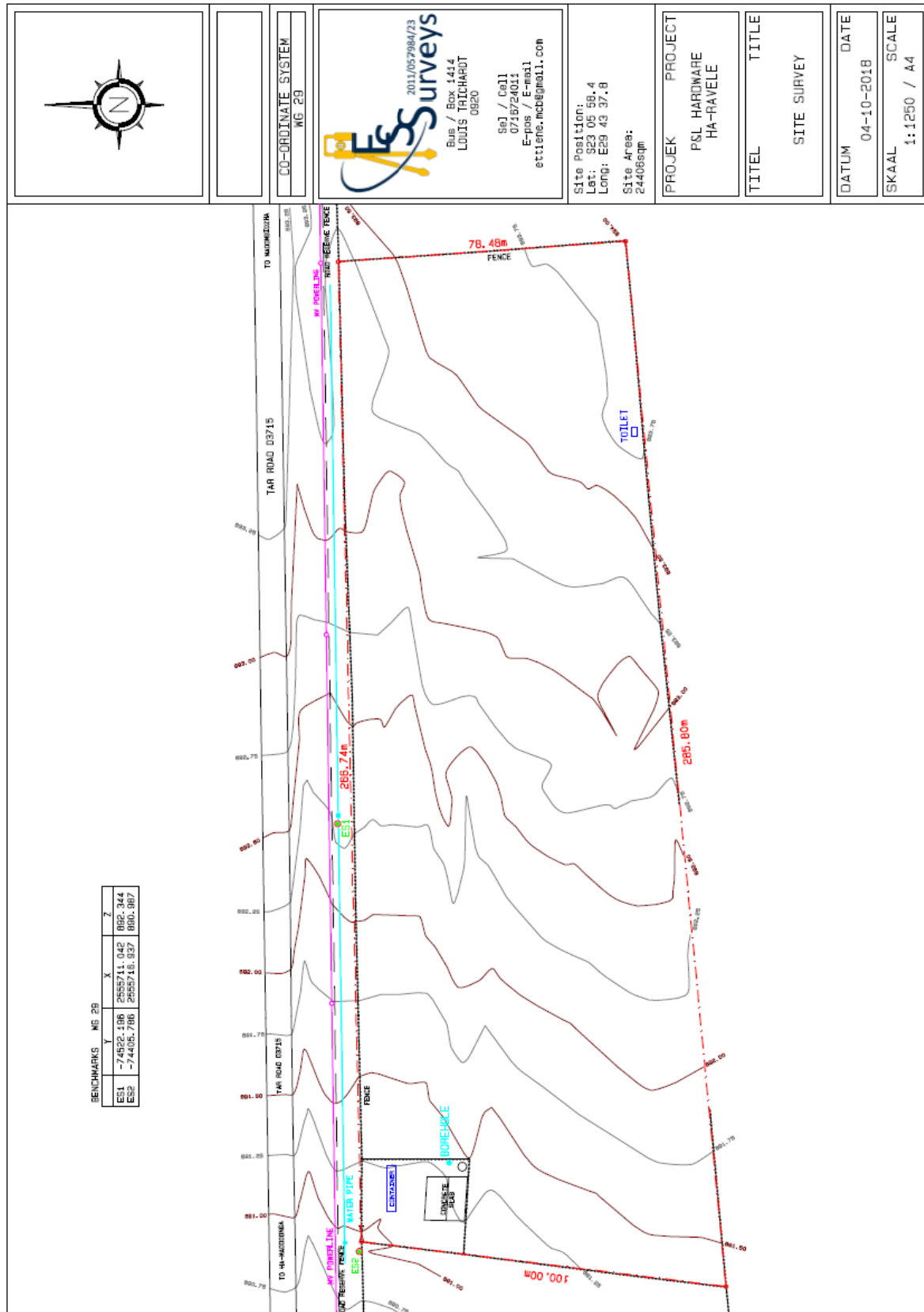


Figure 4: Current site plan (ES Surveys).



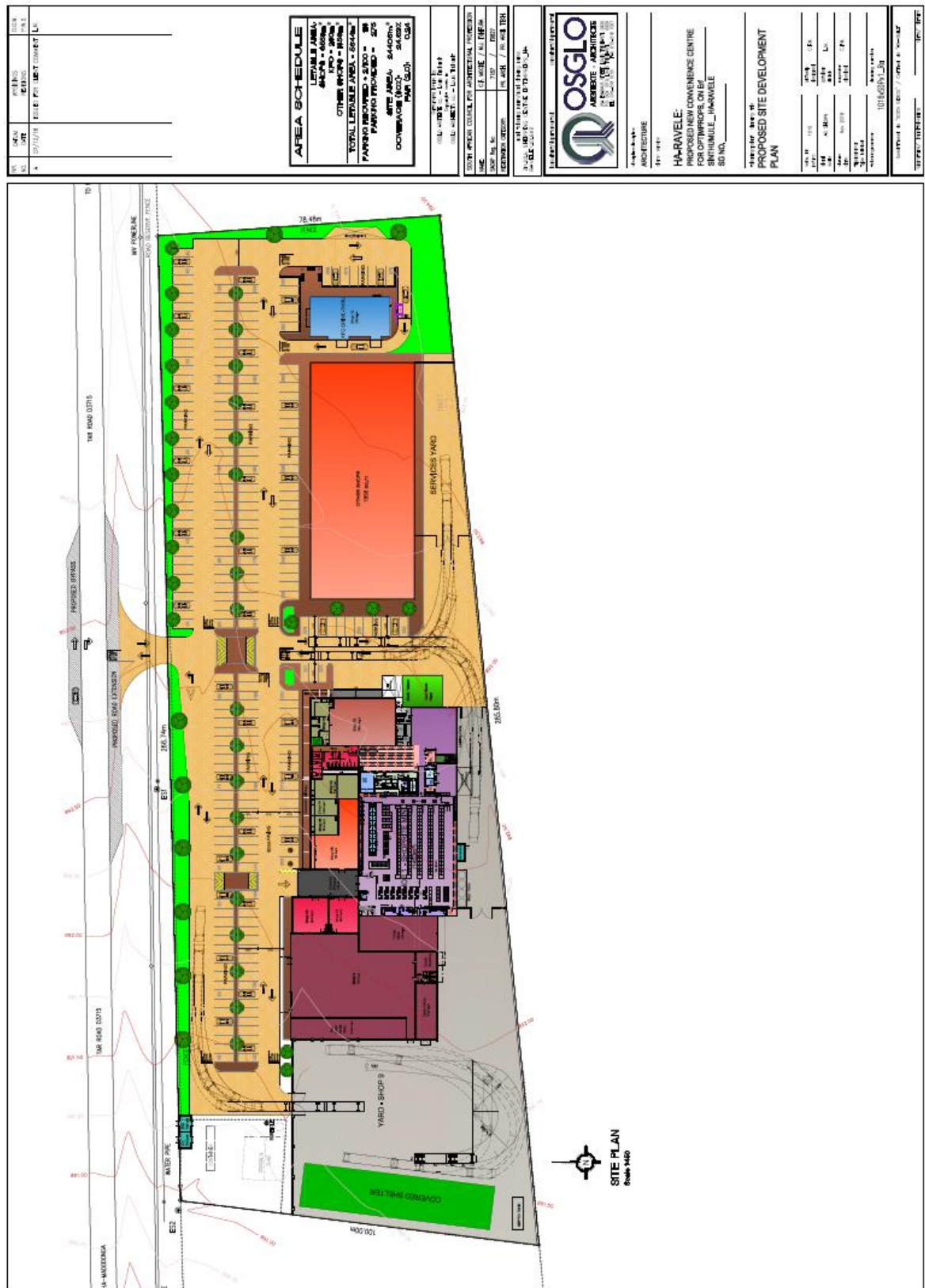


Figure 5: Site Development Plan.

An HIA must be done under the following circumstances:

- a. The construction of a linear development (road, wall, power line, canal etc.) exceeding 300m in length.
- b. The construction of a bridge or similar structure exceeding 50m in length
- c. **Any development or other activity that will change the character of a site and exceed 5 000m<sup>2</sup> or involve three or more existing erven or subdivisions thereof.**
- d. Re-zoning of a site exceeding 10 000 m<sup>2</sup>.
- e. Any other category provided for in the regulations of SAHRA or a provincial heritage authority.

The site was studied via Google Earth images (Figure 6) and photographs provided by the client. It is my opinion that the project may be exempted from doing a Heritage Impact Assessment (HIA). The following is applicable:

- The site has been entirely disturbed by recent activities.
- No natural vegetation is left on site since it was used for agricultural purposes.
- Vegetation on site consist of pioneer species such as grasses and a few bushes.
- Structures on site include a cement slab and a borehole none of which are older than 60 years of age.



**Figure 6: Google Earth image of the site indicating the disturbance and lack of natural vegetation in the area.**

In light of these factors, the chances of finding any heritage related features are indeed extremely slim, if any. This letter serves as an exemption request to the relevant heritage authority.

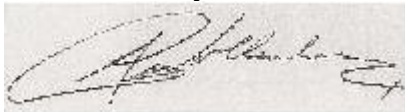
The developer should however note that due to the nature of archaeological material, such sites, objects or features, as well as graves and burials may be uncovered during construction activities on site. In such a case work should cease immediately and an archaeologist should be contacted as a matter of urgency to assess such occurrences.

**Recommendation:**

**That the development be exempted from doing an HIA.**

I trust that you will find this in order.

Yours faithfully

A handwritten signature in black ink, appearing to read 'Prof AC van Vollenhoven', is written over a light-colored, textured background.

Prof AC van Vollenhoven: Director

**Appendix - Site photographs**



**Cement slab in the surveyed area.**





**Pioneer vegetation in the surveyed area.**



**Another view of vegetation in the area.**



**Fence on one side of the property.**