



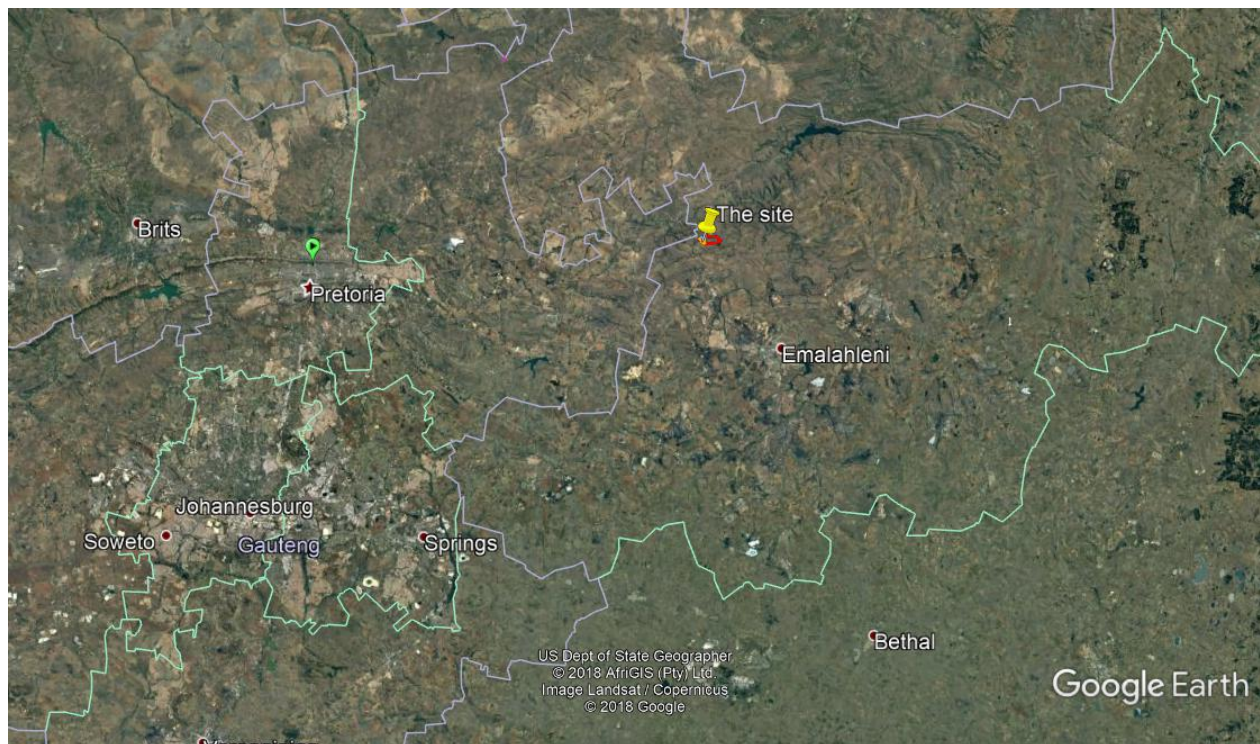
15 February 2018

---

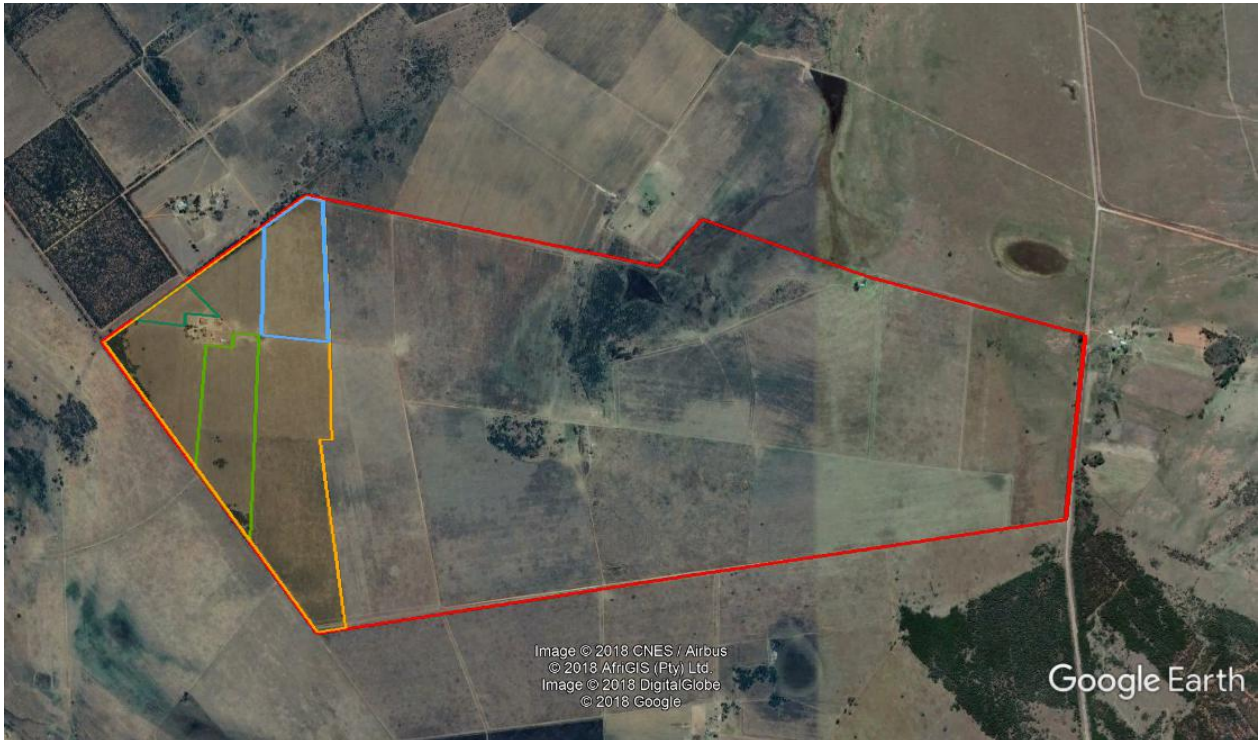
**To whom it may concern**

**LETTER FOR HIA EXEMPTION REQUEST: KRANSPOORT FEEDLOT, EMALAHLENI, MPUMALANGA PROVINCE**

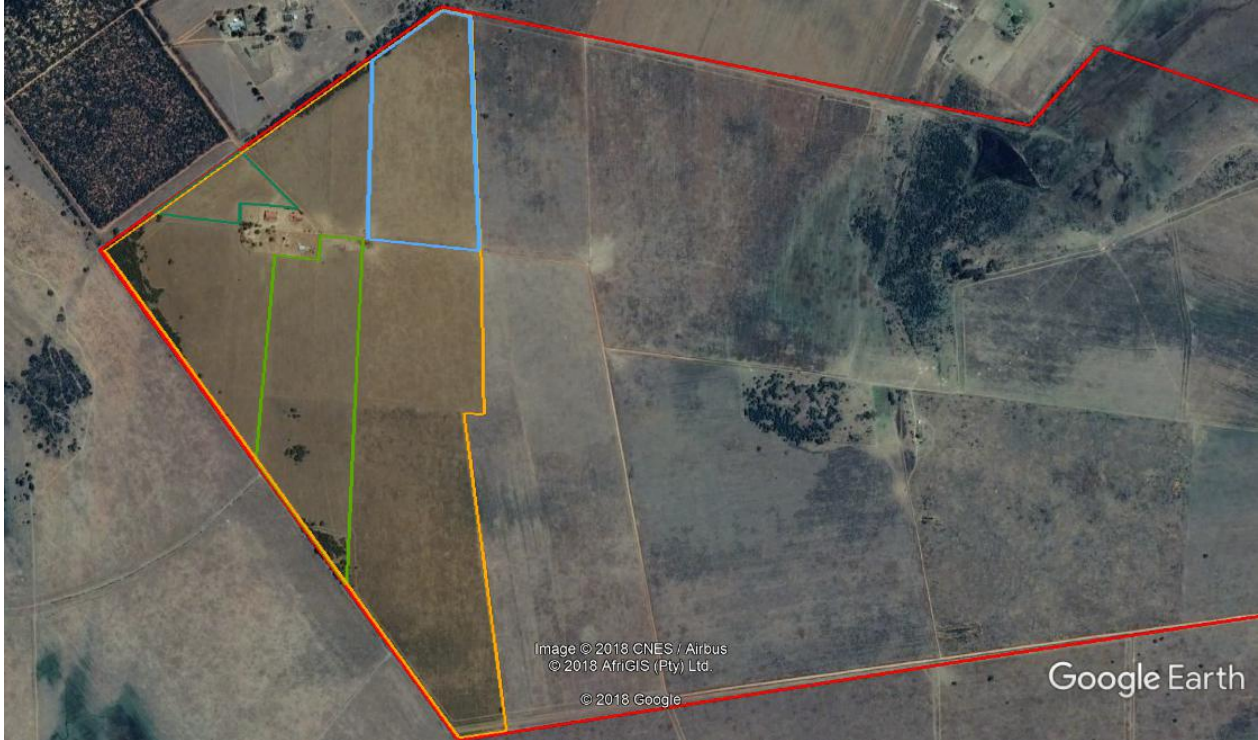
The above-mentioned project refers. The project is located in the north-western direction from Emalahleni (Witbank), and is approximately 30 kilometres from the town. The site is known as the farm Kranspoort 255 JS Blackwood camp, portion 7. The entire farm calculates to a total of 644 hectares, but the feedlot will only be on a small section thereof. Different areas within the farm are considered for this development (Figure 1-3).



**Figure 1: Location of eMalahleni and the site in the Mpumalanga Province.**



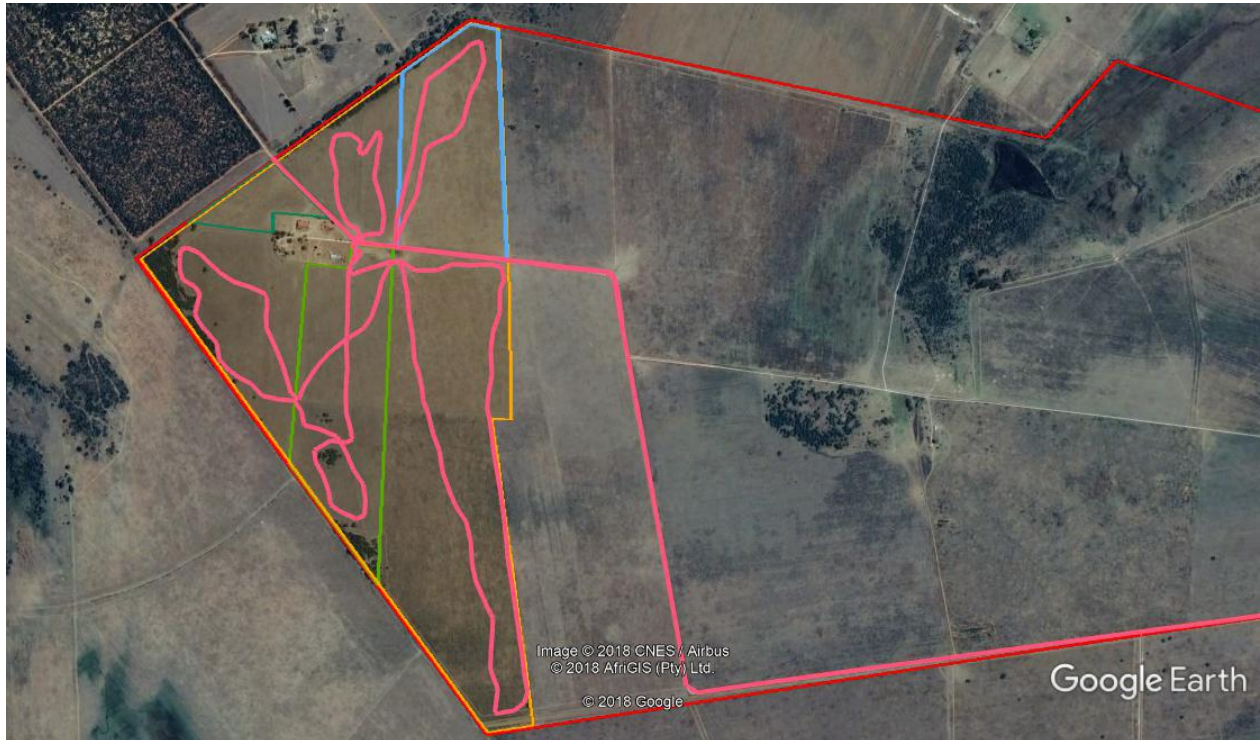
**Figure 2: The farm Kranspoort (red border) and possible areas to be developed (other colours).**



**Figure 3: Detail of proposed areas considered for the development.**

It is my opinion that the project may be exempted from doing a Heritage Impact Assessment (HIA). The following is applicable:

The site was visited on 14 February 2018 (Figure 4). It was noted that all the areas considered for the development, have already been disturbed (Figure 5-11). This mainly include it being used for agricultural purposes, resulting in old fields. Currently the farm mostly is used for grazing purposes.



**Figure 4: Track route of the survey.**

Certain sections consist of open areas and others of weeds and grass, a clear indication of the disturbance. Only disturbed natural vegetation is present on the site – impacted because of agricultural activities e.g. grazing, etc. A few trees in the area also are foreign species (e.g. black wattle) another indication of disturbance.

Vegetation cover is reasonably open, with certain areas consisting of dense, medium high grass. However, these also are in disturbed areas. The chances therefore of finding any heritage related features are indeed extremely slim. Accordingly, nothing of heritage significance was found during the site visit. The few buildings on site are fairly recently built, consisting of a farm house and outbuildings.

It is therefore believed that an additional Heritage Impact Assessment (HIA) is not needed for this project. This letter serves as an exemption request to the relevant heritage authority.

The developer should however note that due to the nature of archaeological material, such sites, objects or features, as well as graves and burials may be uncovered during construction activities on site. In such a case work should cease immediately and an archaeologist should be contacted as a matter of urgency to assess such occurrences.



**Figure 5: General view of the surveyed area.**



**Figure 6: View of short grass in the area.**



**Figure 7: View of old agricultural field at the site.**



**Figure 8: Chopped wattle trees in the surveyed area.**



**Figure 9: Wattle bush at the edge of the area.**



**Figure 10: Grass and weeds covering sections of the area.**



**Figure 11: Short grass in the area.**

**Recommendation:**

**That the development be exempted from doing an HIA.**

I trust that you will find this in order.

Yours faithfully

Prof AC van Vollenhoven: Director