

**BASIC ASSESSMENT AND ENVIRONMENTAL
MANAGEMENT PROGRAMME FOR THE**

**PROPOSED CONSTRUCTION OF A NEW 132KV
POWER LINE FROM THE EXISTING LYDENBURG
SUBSTATION TO THE EXISTING MERENSKY
SUBSTATION, LIMPOPO AND MPUMALANGA
PROVINCE.**

BRIEFING PAPER


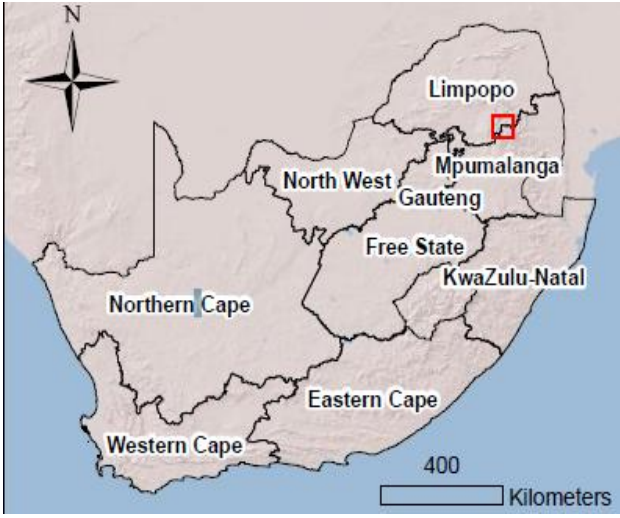



Figure 1: Maps of the Study Area

WHAT DOES THIS DOCUMENT TELL YOU?

Basic Assessment and Environmental Management Programme for the construction of a new 132KV power line from the existing Lydenburg substation to the existing Merensky Substation, Limpopo and Mpumalanga Province.

This document aims to provide you, as an Interested and Affected Party (I&AP), with background information regarding the proposed construction of a new 132KV power line from the existing Lydenburg substation to the existing Merensky Substation, Limpopo and Mpumalanga Province.

The document also provides information regarding the Basic Assessment (BA) Process to be undertaken for the project. Furthermore, the document advises how you can become involved in the project, receive information and/or raise issues, which may concern and/or be of interest to you. The sharing of information forms the basis of the public participation process and offers you the opportunity to become actively involved in the project from the outset. Public participation plays an important role in informing the basic assessment process as input from I&APs ensures that all potential issues are considered within the study.

WHAT DOES THE PROJECT ENTAIL?

Eskom Distribution proposes to construct the following:

- A new 132 kV power line from the existing Lydenburg to the existing Merensky Substation;
- Construct a new 1X132 kV Feeder bay at Merensky MTS
- Construct 46km 132 kV Bersfort line from Merensky MTS to Lydenburg Substation
- Construct 1X132 kV Feeder bay at Lydenburg Substation

WHAT ARE THE POTENTIAL ENVIRONMENTAL IMPACTS ASSOCIATED WITH THE PROPOSED PROJECT?

The potential environmental impacts associated with the project have been identified. As part of the Basic Assessment, these potential impacts will be assessed through the following specialist studies:

Specialist Study	Organisation
Heritage Assessment	Johnny van Schalkwyk
Biodiversity Assessment	Clayton Cook
Wetland Assessment	Paul da Cruz
Avi- Fauna Assessment	Paul da Cruz

WHY ARE ENVIRONMENTAL STUDIES NEEDED?

In terms of the Environmental Impact Assessment (EIA) Regulations Government Notice R543 to No. R. 544 of 2010 published in terms of Section 24(5) read with Section 44 of the National Environmental Management Act (NEMA), 1998 (Act No 107 of 1998), Eskom requires authorization from the Department of Environmental Affairs for undertaking the proposed project. Activities listed under Government Notice R544 (also referred to as Listing Notice 1) may have a detrimental effect on the environment, hence a BA process, as prescribed in the EIA Regulations (2010) will have to be undertaken.

A Basic Assessment is an effective planning and decision-making tool, which allows for the identification of potential environmental consequences associated with a proposed project, and its management through the planning process.

Eskom has appointed Royal HaskoningDHV as the independent Environmental Assessment Practitioner

(EAP), to undertake environmental studies to identify and assess all potential environmental impacts associated with the proposed project. As part of these environmental studies, Interested and Affected Parties are required to be consulted with through a public participation process.

PUBLIC PARTICIPATION PROCESS

It is important that relevant I&APs are identified and involved in the public participation process (see **Figure2**) from the outset of the project. To ensure effective public participation, the process includes the following steps:

- STEP 1:** Advertise the BA Process (local press)
- STEP 2:** Register I&APs and key stakeholders on the database (on-going)
- STEP 3:** Consultation with, and transfer of information to I&APs through focus group meetings and public meetings
- STEP 4:** Invite I&AP’s to comment and provide input on the BAR (40-day comment period)
- STEP 5:** Record all comments, issues and concerns raised by I&APs within a Comments and Responses Report, which will form an integral part of the final BAR.

COMMENTS AND QUERIES

Direct all comments, queries or responses to:
Royal HaskoningDHV (Pty) Ltd.
Hope Mokolane
 PO Box 867 Gallo Manor, 2052
 Phone: (011) 798 6434
 Fax: (011) 798 6005
 Email: Hope. Mokolane @rhdhv.com

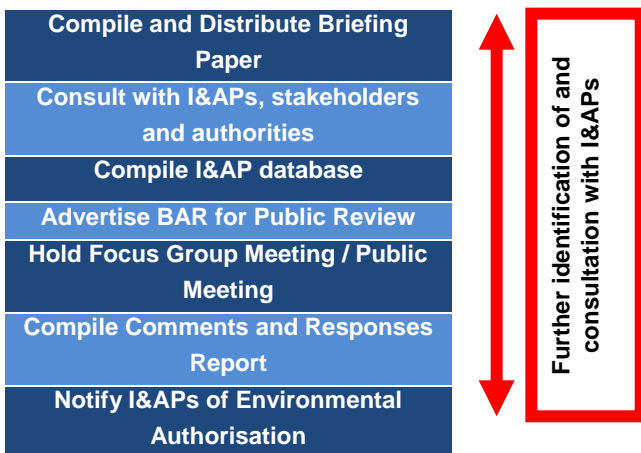
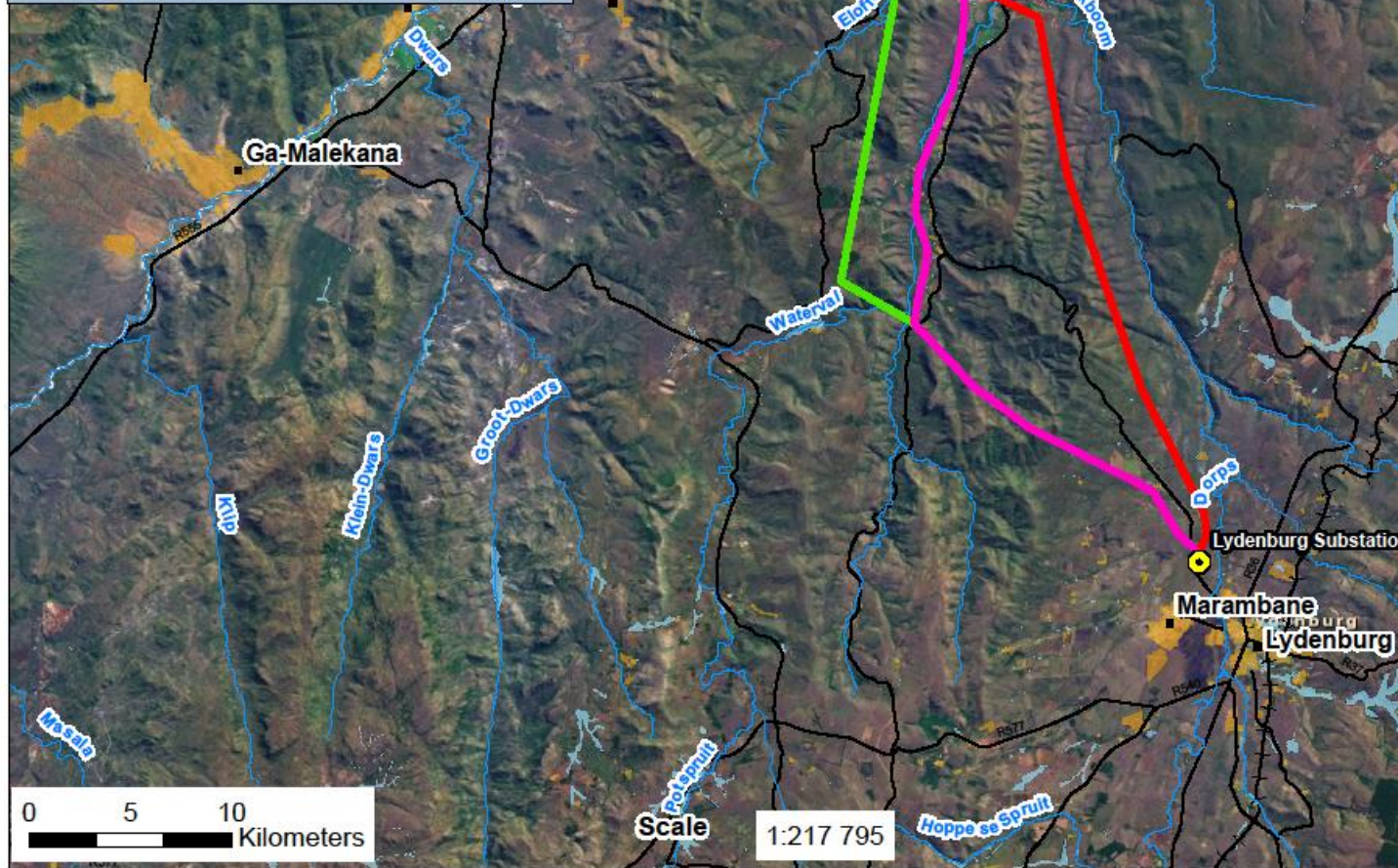
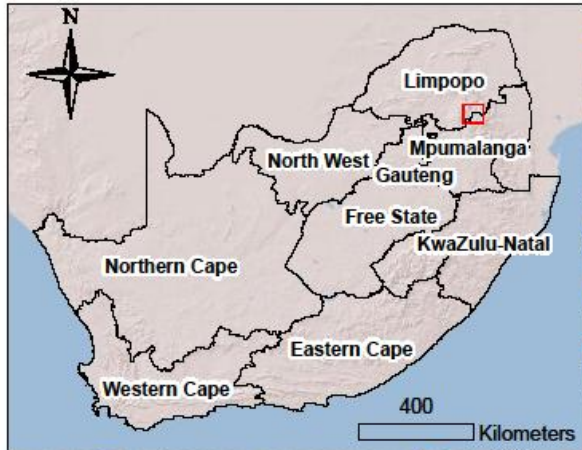


Figure 2: Public Participation Process



132 KV DISTRIBUTION LINE FROM THE LYDENBURG SUBSTATION TO THE MERENSKY SUBSTATION: LOCALITY MAP

Legend

- Rivers
- Roads
- Railways
- Wetland Areas
- Settlement (2009)

Substations

- Lydenburg Substation
- Merensky Substation

Route Alternatives

- Alternative 1
- Alternative 2
- Alternative 3