

**Jaco van der Walt**

BA (Pret) BA (Hons) (Archaeology) [Wits], MA  
(Archaeology [Wits])

Cell: 082 373 8491.

E-mail: [jaco@heritageconsultants.co.za](mailto:jaco@heritageconsultants.co.za)

Website: [www.heritageconsultants.co.za](http://www.heritageconsultants.co.za)



**Beyond Heritage (Pty) Ltd**

Registration number:

2021/598485/07

VAT no. 4660218696

Private Bag X1049

Suite 34

Modimolle

7 December 2021

Attention: Mr Andrew Solomon

SAHRA Case Officer Gauteng

South African Heritage Resources Agency (SAHRA)

Dear Mr Solomon

**Application for exemption from a Heritage Impact Assessment for a service station on farm 751-IQ Baragwanath Extension 5, Gauteng**

**Introduction**

ERM was appointed by Shell as the Environmental Assessment Practitioner to manage the Environmental Impact Assessment process for a new retail service station located on the corner of Aerodrome and Chris Hani Roads, Baragwanath, Gauteng (Figure 1.1 to 1.3). As part of the process Beyond Heritage was appointed to provide an assessment of the possible impacts on heritage resources. The assessment consists of a desktop study as well a site visit to the study area.

Jaco van der Walt

BA (Pret) BA (Hons) (Archaeology) [Wits], MA  
(Archaeology [Wits])

Cell: 082 373 8491.

E-mail: [jaco@heritageconsultants.co.za](mailto:jaco@heritageconsultants.co.za)

Website: [www.heritageconsultants.co.za](http://www.heritageconsultants.co.za)



Beyond Heritage (Pty) Ltd

Registration number:

2021/598485/07

VAT no. 4660218696

Private Bag X1049

Suite 34

Modimolle

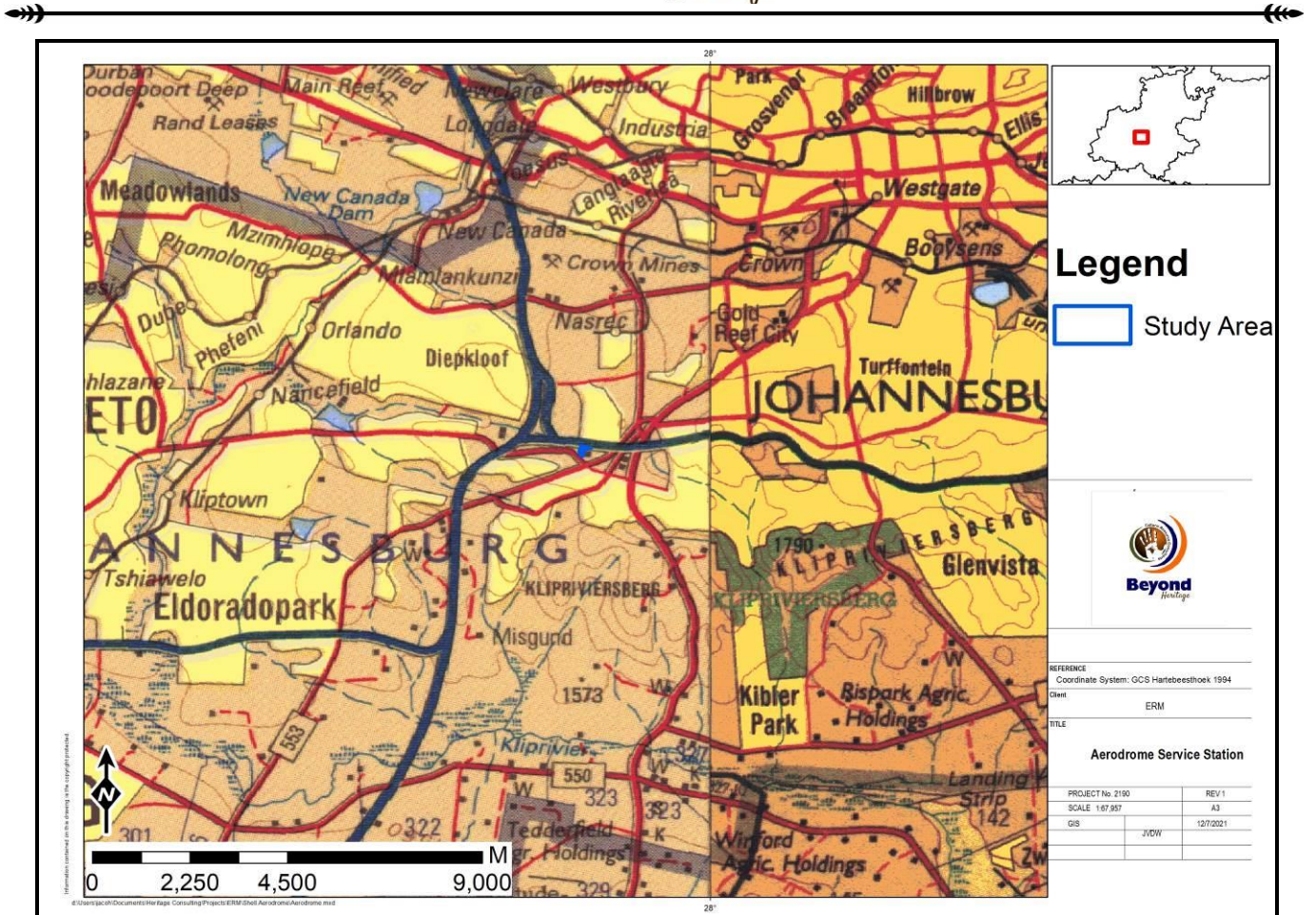


Figure 0.1. Regional setting of the project (1: 250 000 topographical map).

Jaco van der Walt  
 BA (Pret) BA (Hons) (Archaeology) [Wits], MA  
 (Archaeology [Wits])  
 Cell: 082 373 8491.  
 E-mail: jaco@heritageconsultants.co.za  
 Website: www.heritageconsultants.co.za



Beyond Heritage (Pty) Ltd  
 Registration number:  
 2021/598485/07  
 VAT no. 4660218696  
 Private Bag X1049  
 Suite 34  
 Modimolle

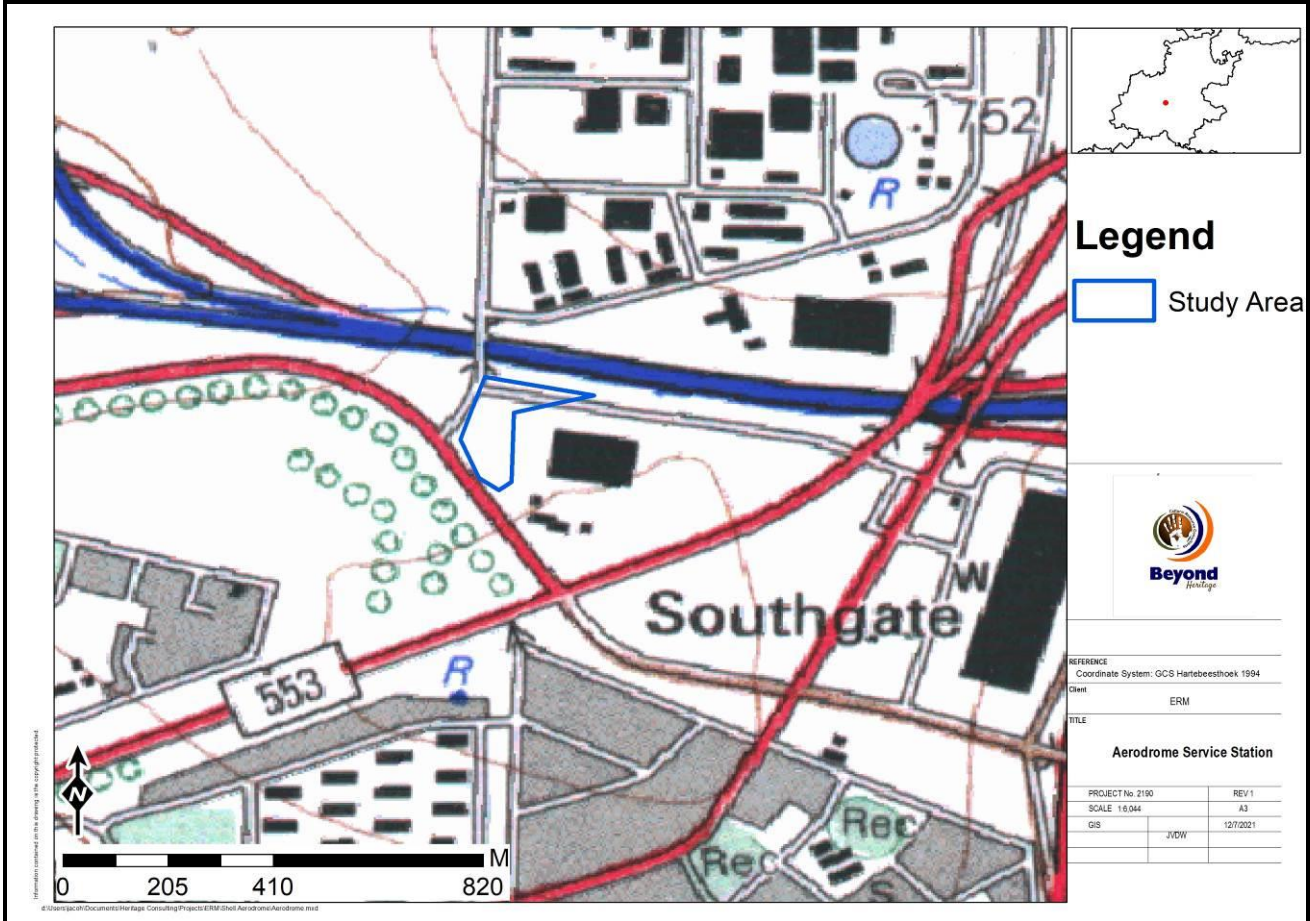


Figure 0.2. Local setting of the project (1: 50 000 topographical map).

Jaco van der Walt  
 BA (Pret) BA (Hons) (Archaeology) [Wits], MA  
 (Archaeology [Wits])

Cell: 082 373 8491.  
 E-mail: jaco@heritageconsultants.co.za  
 Website: www.heritageconsultants.co.za



Beyond Heritage (Pty) Ltd  
 Registration number:  
 2021/598485/07  
 VAT no. 4660218696  
 Private Bag X1049  
 Suite 34  
 Modimolle

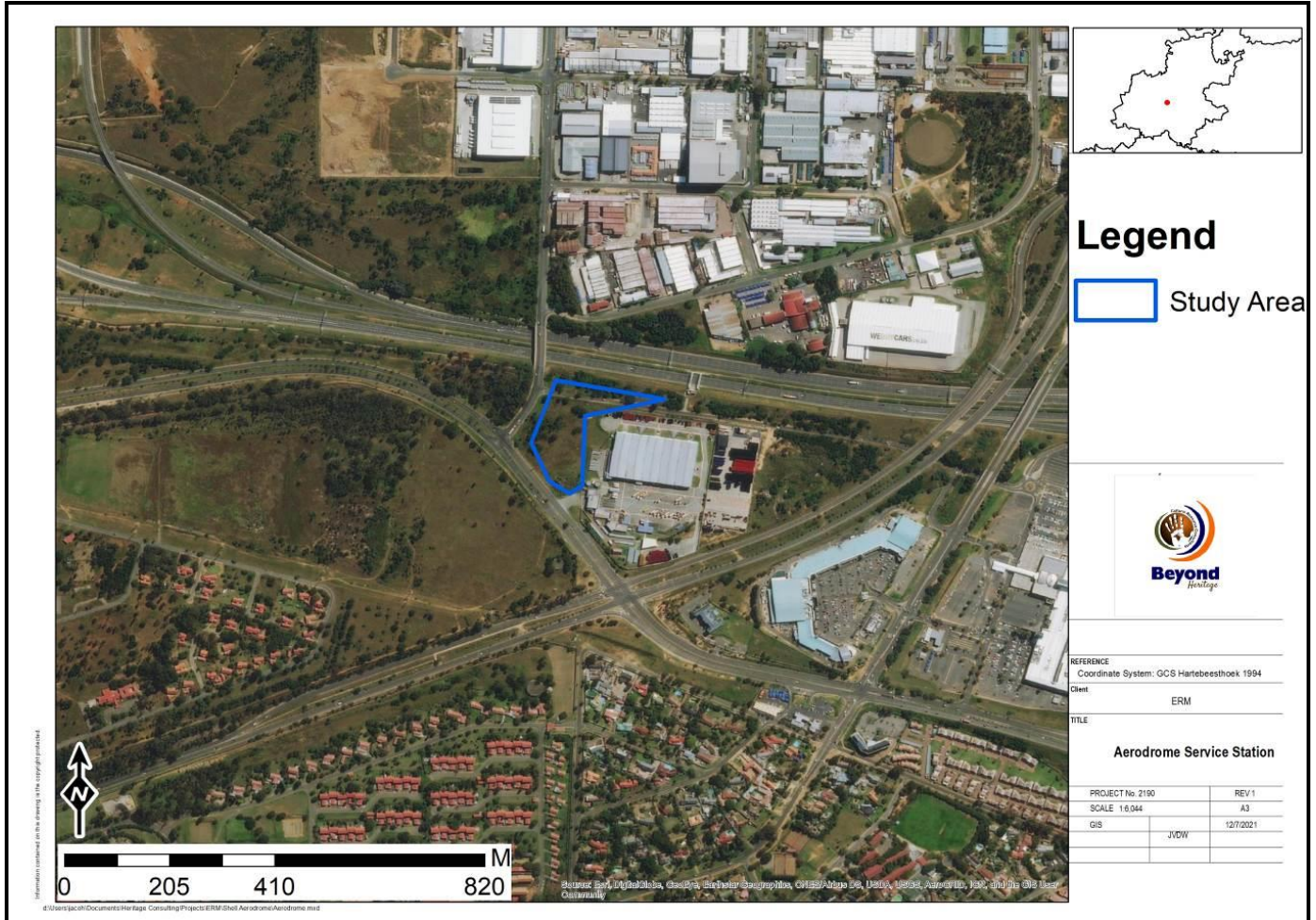


Figure 0.3. Aerial image of the study area.

## 1. The Heritage Character of the Study area

### 2.1. Literature review

A brief survey of available literature was conducted to extract data and information on the area in question to provide general heritage context into which the development would be set. This literature search included published material, unpublished commercial reports and online material, including reports sourced from the South African Heritage Resources Information System (SAHRIS).

## Jaco van der Walt

BA (Pret) BA (Hons) (Archaeology) [Wits], MA  
(Archaeology [Wits])

Cell: 082 373 8491.

E-mail: [jaco@heritageconsultants.co.za](mailto:jaco@heritageconsultants.co.za)

Website: [www.heritageconsultants.co.za](http://www.heritageconsultants.co.za)



## Beyond Heritage (Pty) Ltd

Registration number:

2021/598485/07

VAT no. 4660218696

Private Bag X1049

Suite 34

Modimolle

## 2.2. Background to the general area

South Africa has a long and complex Stone Age sequence of more than 2 million years. The broad sequence includes the Later Stone Age, the Middle Stone Age and the Earlier Stone Age. Each of these phases contain sub-phases or industrial complexes, and within these we can expect regional variation regarding characteristics and time ranges. The three main phases can be divided as follows;

- \* Later Stone Age; associated with Khoi and San societies and their immediate predecessors. Recently to ~30 thousand years ago
- \* Middle Stone Age; associated with Homo sapiens and archaic modern humans. 30-300 thousand years ago.
- \* Earlier Stone Age (ESA); associated with early Homo groups such as Homo habilis and Homo erectus. 400 000- > 2 million years ago.

Although there are no well-known Stone Age sites located on or around the study area there is evidence of the use of the larger area by Stone Age communities for example along the Kliprivier where ESA and MSA tools were recorded. LSA material is recorded along ridges to the south of the current study area (Huffman 2008). Petroglyphs occur at Redan as well as along the Vaal River (Berg 1999).

### *The Iron Age*

The Iron Age as a whole represents the spread of Bantu speaking people and includes both the pre-Historic and Historic periods. It can be divided into three distinct periods:

- The Early Iron Age: Most of the first millennium AD.
- The Middle Iron Age: 10th to 13th centuries AD
- The Late Iron Age: 14th century to colonial period.

Extensive Stone walled sites are recorded at Klipriviersberg Nature reserve belonging to the Late Iron Age period. A large body of research is available on this area. These sites (Taylor's Type N, Mason's Class 2 & 5) are now collectively referred to as Klipriviersberg (Huffman 2007). These settlements are complex in that aggregated settlements are common, the outer wall sometimes includes scallops to mark back courtyards, there are more small stock kraals, and straight walls separate households in the residential zone. These sites date to the 18th and 19th centuries and was built by people in the Fokeng cluster. In this area the Klipriviersberg walling would have ended at about AD 1823, when Mzilikazi entered the area (Rasmussen 1978). This settlement type may have lasted longer in other areas because of the positive interaction between Fokeng and Mzilikazi.

The Difaqane (Sotho), or Mfekane ("the crushing" in Nguni) was a time of bloody upheavals in Natal and on the Highveld, which occurred around the early 1820's until the late 1830's (Bergh 1999: 10). It came about in response to heightened competition for land and trade, and caused population groups like gun-carrying Griquas and Shaka's Zulus to attack other tribes (Bergh 1999: 14; 116-119). It seems that, in 1827, Mzilikazi's Ndebele started moving through the area where Johannesburg is located today. This group went on raids to various other areas in order to expand their area of influence (Bergh 1999: 11).

**Jaco van der Walt**

BA (Pret) BA (Hons) (Archaeology) [Wits], MA  
(Archaeology [Wits])

Cell: 082 373 8491.

E-mail: [jaco@heritageconsultants.co.za](mailto:jaco@heritageconsultants.co.za)

Website: [www.heritageconsultants.co.za](http://www.heritageconsultants.co.za)

**Beyond Heritage (Pty) Ltd**

Registration number:

2021/598485/07

VAT no. 4660218696

Private Bag X1049

Suite 34

Modimolle

**2.2.1. CRM reports**

The following CRM reports were conducted in the vicinity of the study area and consulted for this study:

| Author                           | Year | Project name   | Findings  |
|----------------------------------|------|--|---|
| Mathoho, E & Magoma, M           | 2010 | Archaeological investigation of a proposed substation at SOWETO, Gauteng Province.   | No sites.   |
| Fourie, W.                       | 2007 | Proposed development on Portion 12 of the farm Misgund 322 IQ Johannesburg, Gauteng Province   | No sites  |
| Huffman, T. N & Calabrese, J. A. | 1997 | Archaeological survey of the Baralink Node Development.  | Two intangible heritage sites and one site that might date to the Boer War. |
| Coetzee, F. P.                   | 2015 | Cultural Heritage Assessment for the Proposed Construction of the Additional Meredale Reservoir (210 MI) (Eikenhof System), City of Johannesburg District Municipality, City of Johannesburg Metropolitan Municipality, Gauteng. | Modern Built features and an Iron Age Site away from the study area.        |
| Van Schalkwyk, J.                | 2003 | A survey of cultural resources for the proposed Aeroton Cemetery, Johannesburg   | No Sites  |

Google Earth and 1:50 000 maps of the area were utilised to identify possible places where archaeological and historical sites might be located. LIA sites can be expected along foothills and dolerite dykes.

**2.1.3. Society and Google Earth Monuments**

No known grave sites are indicated close to the study area.

**2.3. Cultural Landscape**

The landscape setting in which the project is located is urban in character but used to be rural with road infrastructure from the 1940's onwards. The surrounding area is now densely developed (Figure 2.1 – 2.4) and characterised by the intensive residential developments.

Jaco van der Walt  
 BA (Pret) BA (Hons) (Archaeology) [Wits], MA  
 (Archaeology [Wits])  
 Cell: 082 373 8491.  
 E-mail: jaco@heritageconsultants.co.za  
 Website: www.heritageconsultants.co.za



Beyond Heritage (Pty) Ltd  
 Registration number:  
 2021/598485/07  
 VAT no. 4660218696  
 Private Bag X1049  
 Suite 34  
 Modimolle

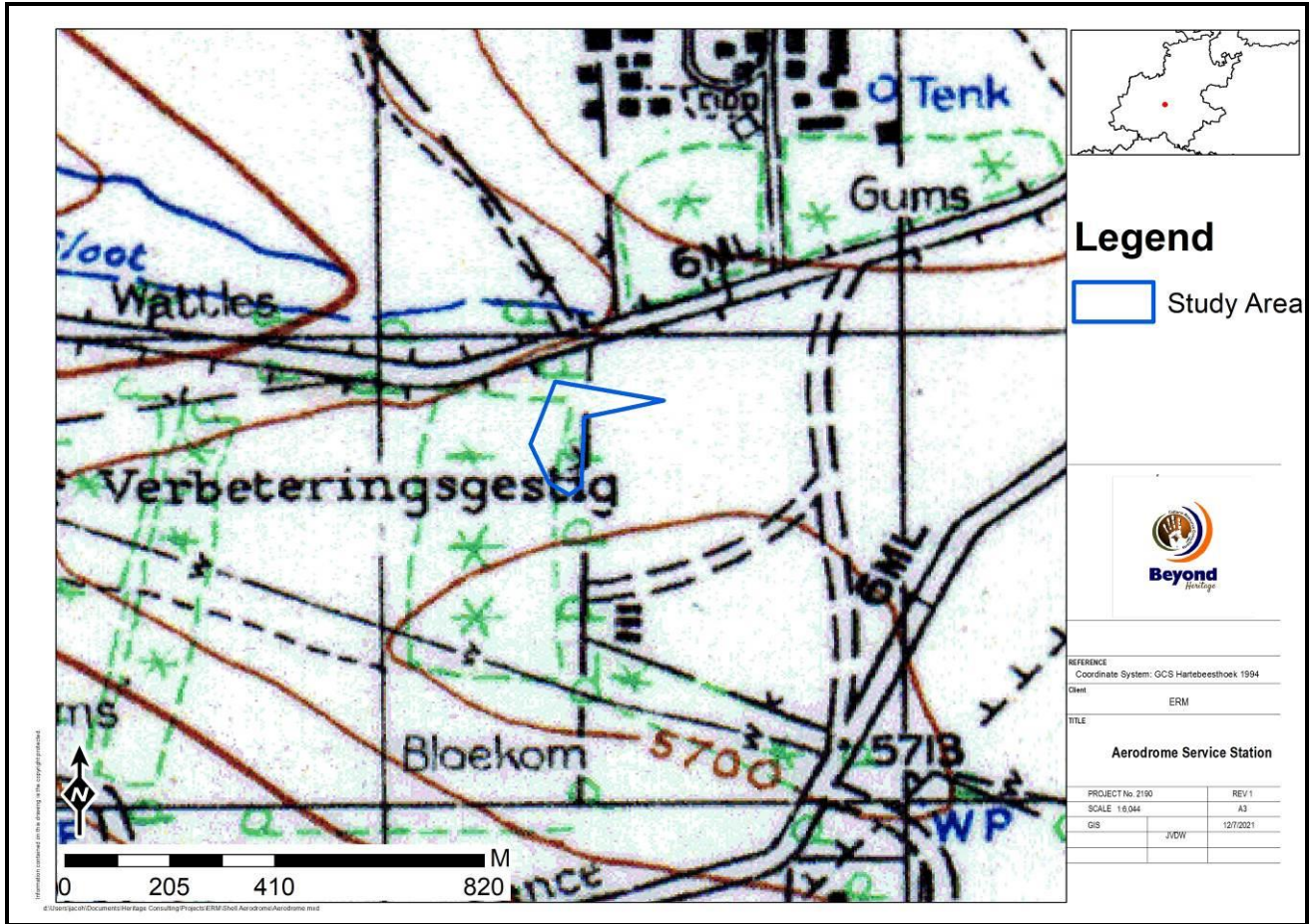


Figure 1.1. 1944 Topographical map of the project area and surrounds showing limited development.

Jaco van der Walt  
 BA (Pret) BA (Hons) (Archaeology) [Wits], MA  
 (Archaeology [Wits])  
 Cell: 082 373 8491.  
 E-mail: jaco@heritageconsultants.co.za  
 Website: www.heritageconsultants.co.za



Beyond Heritage (Pty) Ltd  
 Registration number:  
 2021/598485/07  
 VAT no. 4660218696  
 Private Bag X1049  
 Suite 34  
 Modimolle



Figure 1.2. 1956 Topographical map of the impact area indicating the development of the project area surrounded by road developments with water bodies/reservoirs in the study area.



Jaco van der Walt  
 BA (Pret) BA (Hons) (Archaeology) [Wits], MA  
 (Archaeology [Wits])  
 Cell: 082 373 8491.  
 E-mail: jaco@heritageconsultants.co.za  
 Website: www.heritageconsultants.co.za



Beyond Heritage (Pty) Ltd  
 Registration number:  
 2021/598485/07  
 VAT no. 4660218696  
 Private Bag X1049  
 Suite 34  
 Modimolle

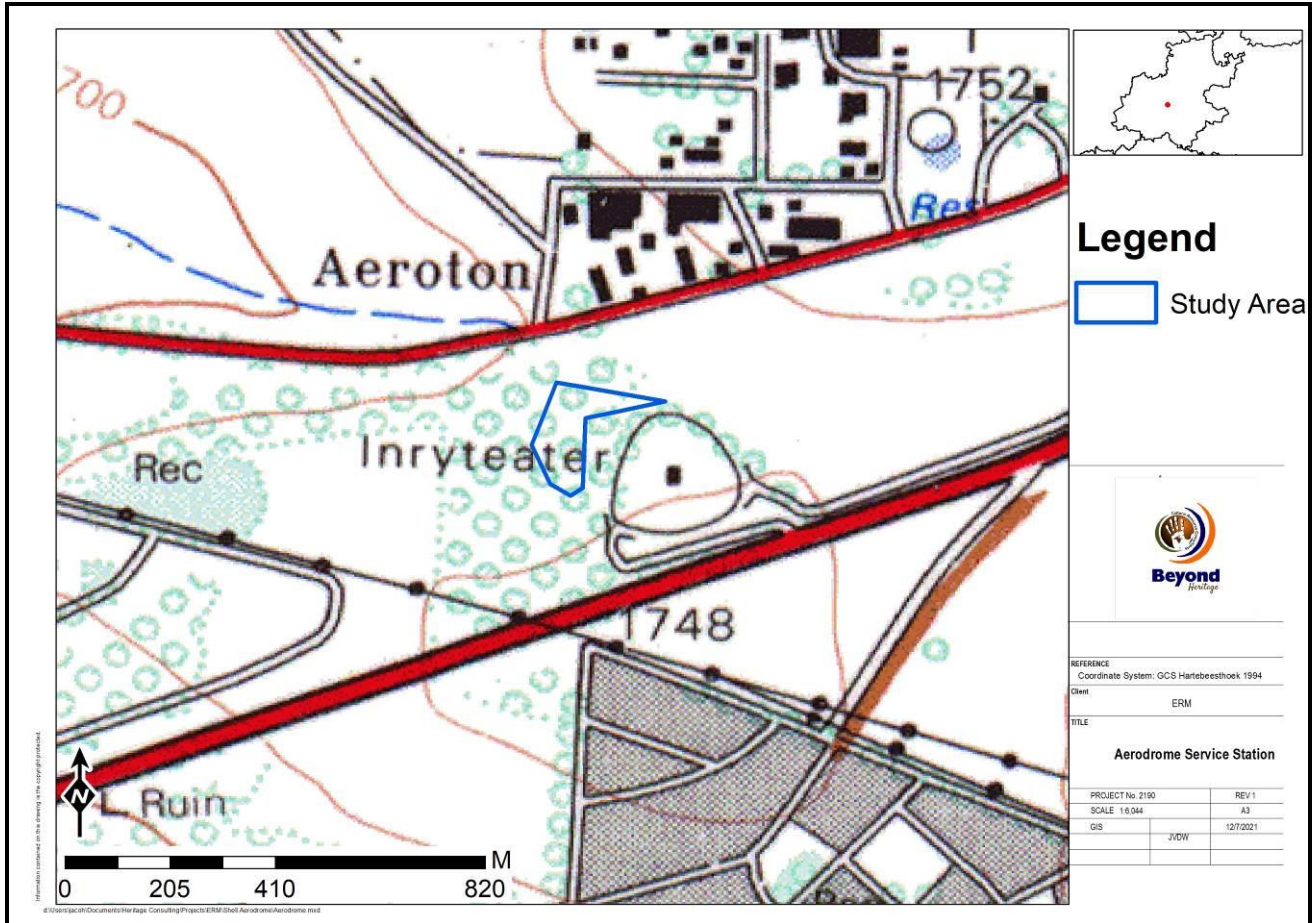


Figure 1.3. 1976 map of the study area indicating a drive-in theatre close by with the study area sitl being undeveloped.

Jaco van der Walt  
BA (Pret) BA (Hons) (Archaeology) [Wits], MA  
(Archaeology [Wits])

Cell: 082 373 8491.  
E-mail: jaco@heritageconsultants.co.za  
Website: www.heritageconsultants.co.za



Beyond Heritage (Pty) Ltd  
Registration number:  
2021/598485/07  
VAT no. 4660218696  
Private Bag X1049  
Suite 34  
Modimolle

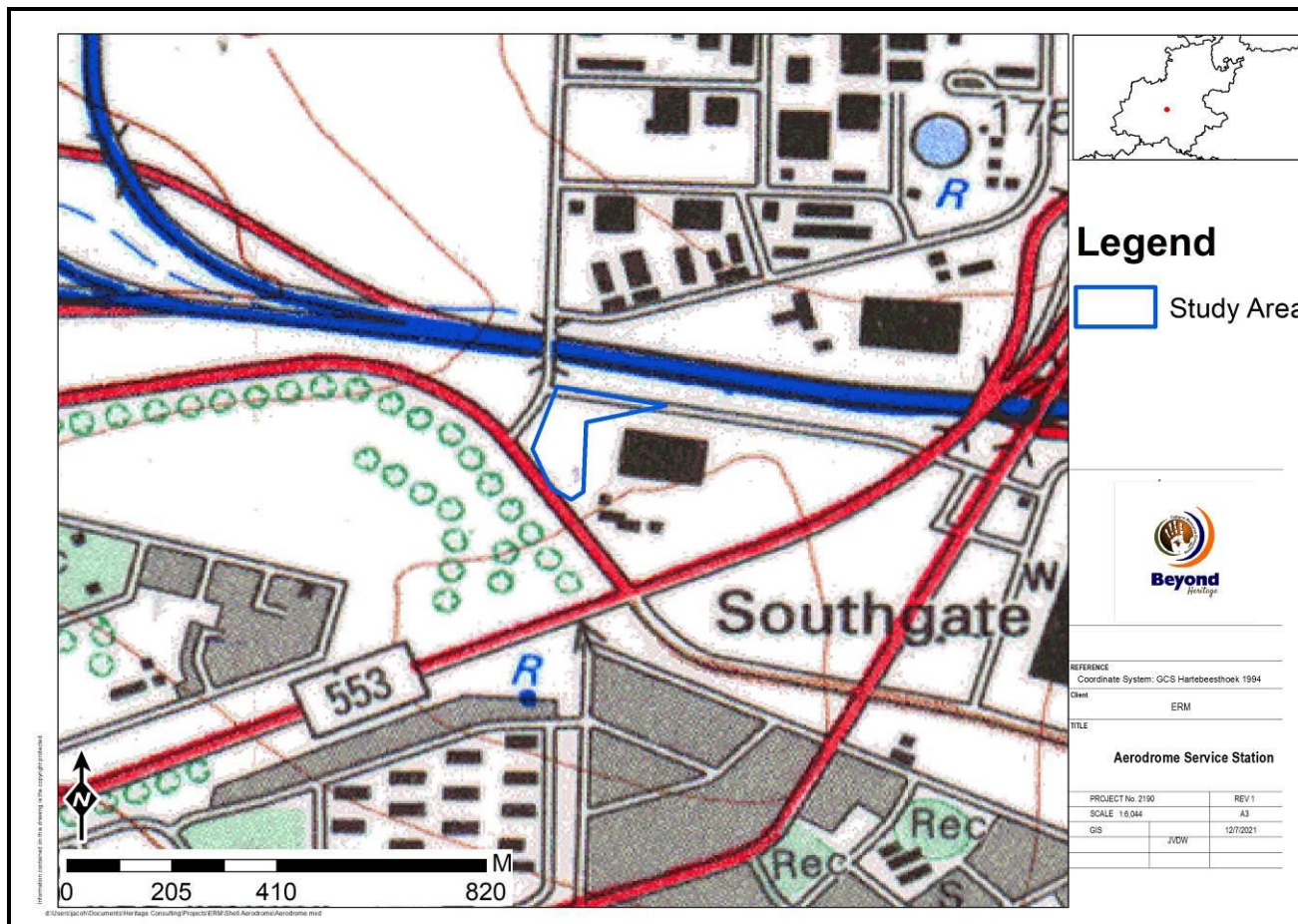


Figure 1.4. 1995 Topographic map indicating development of the surrounding area.

### 3. Findings

The project area was visited on the 9<sup>th</sup> of September and was sufficiently covered to understand the heritage character of the area (Figure 3.1). The project footprint measures approximately 2 hectares and is located adjacent to Aerodrome and Chris Hani Roads. The surrounding areas have been developed between the 1970's and 1990's and these developments would have impacted on surface indicators of heritage resources if any were present in the area. This was evident during the site visit that showed the study area to be disturbed from a heritage point of view (Figure 3.2 to 3.5). The study area is considered to be of low heritage potential and no structures, historical sites or archaeological artefacts were noted during the site visit.

Jaco van der Walt  
 BA (Pret) BA (Hons) (Archaeology) [Wits], MA  
 (Archaeology [Wits])  
 Cell: 082 373 8491.  
 E-mail: jaco@heritageconsultants.co.za  
 Website: www.heritageconsultants.co.za



Beyond Heritage (Pty) Ltd  
 Registration number:  
 2021/598485/07  
 VAT no. 4660218696  
 Private Bag X1049  
 Suite 34  
 Modimolle

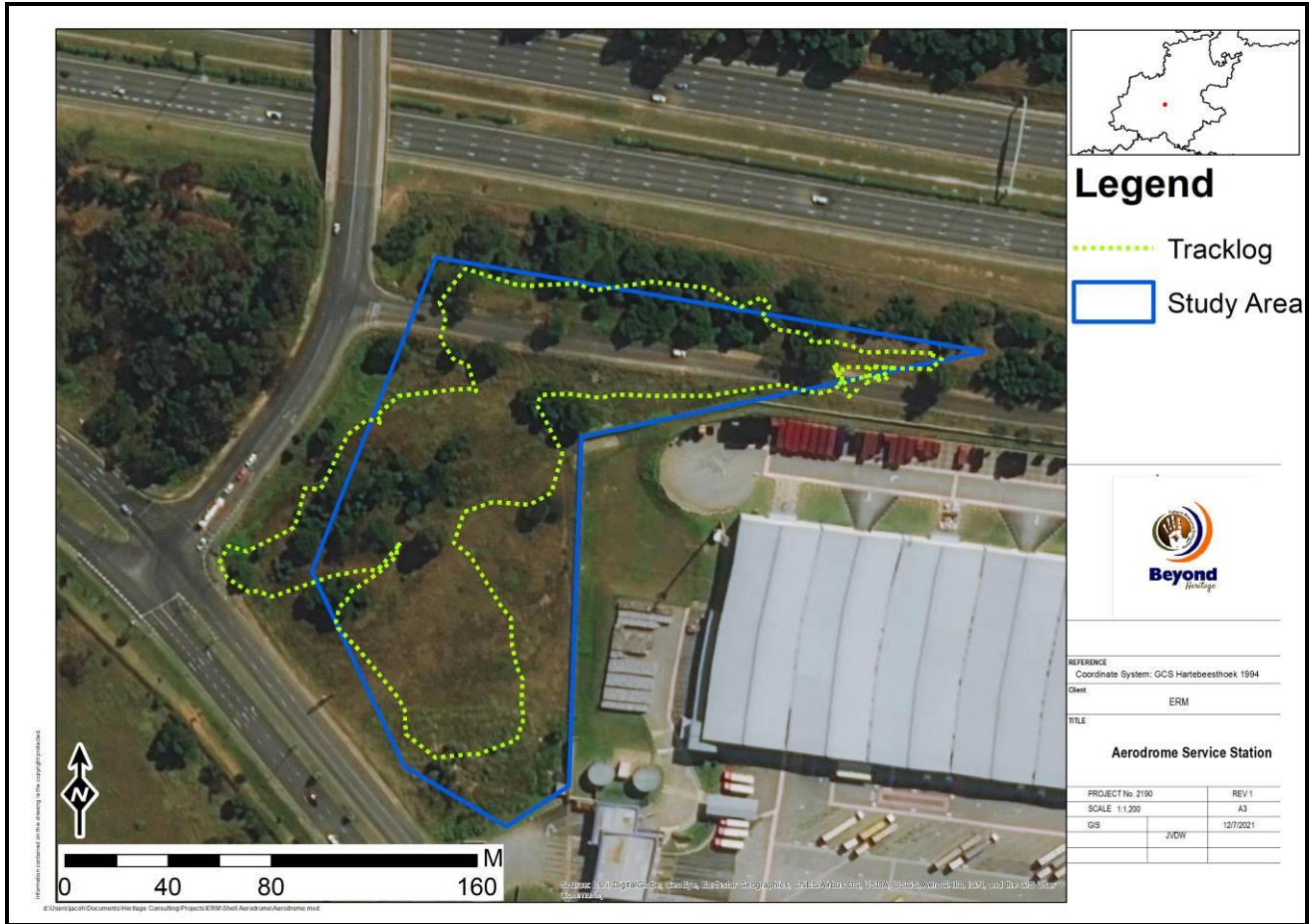


Figure 3.1. Track logs of the site visit.

Jaco van der Walt

BA (Pret) BA (Hons) (Archaeology) [Wits], MA  
(Archaeology [Wits])

Cell: 082 373 8491.

E-mail: [jaco@heritageconsultants.co.za](mailto:jaco@heritageconsultants.co.za)

Website: [www.heritageconsultants.co.za](http://www.heritageconsultants.co.za)



Beyond Heritage (Pty) Ltd

Registration number:

2021/598485/07

VAT no. 4660218696

Private Bag X1049

Suite 34

Modimolle



Figure 3.2. General site conditions.



Figure 3.3. General site conditions.



Figure 3.4. General site conditions.



Figure 3.5. General site conditions.

Jaco van der Walt

BA (Pret) BA (Hons) (Archaeology) [Wits], MA  
(Archaeology [Wits])

Cell: 082 373 8491.

E-mail: jaco@heritageconsultants.co.za

Website: www.heritageconsultants.co.za



Beyond Heritage (Pty) Ltd

Registration number:

2021/598485/07

VAT no. 4660218696

Private Bag X1049

Suite 34

Modimolle

### 3.1. Paleontology

Based on the SAHRA paleontological map the study area is of low sensitivity (Figure 3.6) and no further studies are required for this aspect.



Figure 3.6. Paleontological sensitivity of the approximate study area (yellow polygon) as indicated on the SAHRA Paleontological Map (Key below)

| Colour        | Sensitivity        | Required Action   |
|---------------|--------------------|---|
| RED           | VERY HIGH          | Field assessment and protocol for finds is required   |
| ORANGE/YELLOW | HIGH               | Desktop study is required and based on the outcome of the desktop study, a field assessment is likely                               |
| GREEN         | MODERATE           | Desktop study is required   |
| BLUE          | LOW                | No palaeontological studies are required however a protocol for finds is required   |
| GREY          | INSIGNIFICANT/ZERO | No palaeontological studies are required  |
| WHITE/CLEAR   | UNKNOWN            | These areas will require a minimum of a desktop study. As more information comes to light, SAHRA will continue to populate the map. |

**Jaco van der Walt**

BA (Pret) BA (Hons) (Archaeology) [Wits], MA  
(Archaeology) [Wits]

Cell: 082 373 8491.

E-mail: [jaco@heritageconsultants.co.za](mailto:jaco@heritageconsultants.co.za)

Website: [www.heritageconsultants.co.za](http://www.heritageconsultants.co.za)



**Beyond Heritage (Pty) Ltd**

Registration number:

2021/598485/07

VAT no. 4660218696

Private Bag X1049

Suite 34

Modimolle

**4. Conclusion**

The study area has been impacted upon by the extensive development of the surrounding areas and the area is considered to be of low heritage potential. The impact of clearing, levelling and construction activities from surrounding developments would have obliterated any indicators of heritage resources if any ever occurred in the study area. This was confirmed during a site visit to the project area where no archaeological sites or standing structures were recorded, and it is unlikely that the project would impact on significant heritage resources. Therefore, an application for exemption from further heritage studies is supported.

Any further queries can be forwarded to Jaco van der Walt on Cell: +27 82 373 8491 or to [jaco@heritageconsultants.co.za](mailto:jaco@heritageconsultants.co.za).

**Jaco van der Walt**  
BA (Pret) BA (Hons) (Archaeology) [Wits],  
MA (Archaeology) [Wits]

Cell: 082 373 8491  
E-mail: [jaco@heritageconsultants.co.za](mailto:jaco@heritageconsultants.co.za)  
Website: [www.beyondheritage.com](http://www.beyondheritage.com)

**Beyond**  
*Heritage*

Beyond Heritage (Pty) Ltd Registration number: 2021/598485/07 VAT no. 4660218696

**Jaco van der Walt**

BA (Pret) BA (Hons) (Archaeology) [Wits], MA  
(Archaeology [Wits])

Cell: 082 373 8491.

E-mail: [jaco@heritageconsultants.co.za](mailto:jaco@heritageconsultants.co.za)

Website: [www.heritageconsultants.co.za](http://www.heritageconsultants.co.za)



**Beyond Heritage (Pty) Ltd**

Registration number:

2021/598485/07

VAT no. 4660218696

Private Bag X1049

Suite 34

Modimolle

---

**5. References**

Archaeological Database Wits University Referenced 2009

Bergh, J.S., (ed.) *Geskiedenisatlas van Suid-Afrika. Die vier noordelike provinsies*. Pretoria: J. L. van Schaik Uitgewers. 1999.

Huffman, T.N. 2007. *Handbook to the Iron Age: The Archaeology of Pre-Colonial Farming Societies in Southern Africa*. University of KwaZulu-Natal Press, Scottsville.

Rasmussen, R.K. 1978 *Migrant kingdom: Mzilikaqzi's Ndebele in South Africa*. London: Rex Collings

Ross, R. *A concise history of South Africa*. Cambridge University Press. Cambridge. 1999.

SAHRA Report Mapping Project Version 1.0, 2009

SAHRIS (Cited 7 Dec 2021)