

**A LETTER OF EXEMPTION FOR BLUEWAVE PIGGERY
EXTENSION**

**FOR PHANDO ENVIRONMENTAL CONSULTING
(PTY) LTD**

DATE: 12 MARCH 2021

By Gavin Anderson

**Umlando: Archaeological Surveys and Heritage
Management**

PO Box 10153, Meerensee, 3901

Phone: 035-7531785 Cell: 0836585362

umlando@gmail.com



Abbreviations

HP	Historical Period
IIA	Indeterminate Iron Age
LIA	Late Iron Age
EIA	Early Iron Age
ISA	Indeterminate Stone Age
ESA	Early Stone Age
MSA	Middle Stone Age
LSA	Late Stone Age
HIA	Heritage Impact Assessment
PIA	Palaeontological Impact Assessment

INTRODUCTION

The Farm Nooitgedacht is located 3.5km west of Gelukstadt and the R34. Vryheid occurs 28km to the northwest. The current site is an agricultural farm with crops, cattle, chicken and pigs. Grasslands occur in the non-agricultural fields.

The landowner of Farm Nooitgedacht intends to expand his piggery from 150 units to close to 3000 pigs units. Funding from the Department of Agriculture was obtained for the development of this project. The landowner intends to modernise the piggery and extend it.

Umlando was requested to assist in the HIA and suggested that it be exempt from further HIA. Figures 1 – 4 show the location of the site.

FIG. 1 GENERAL LOCATION OF THE STUDY AREA

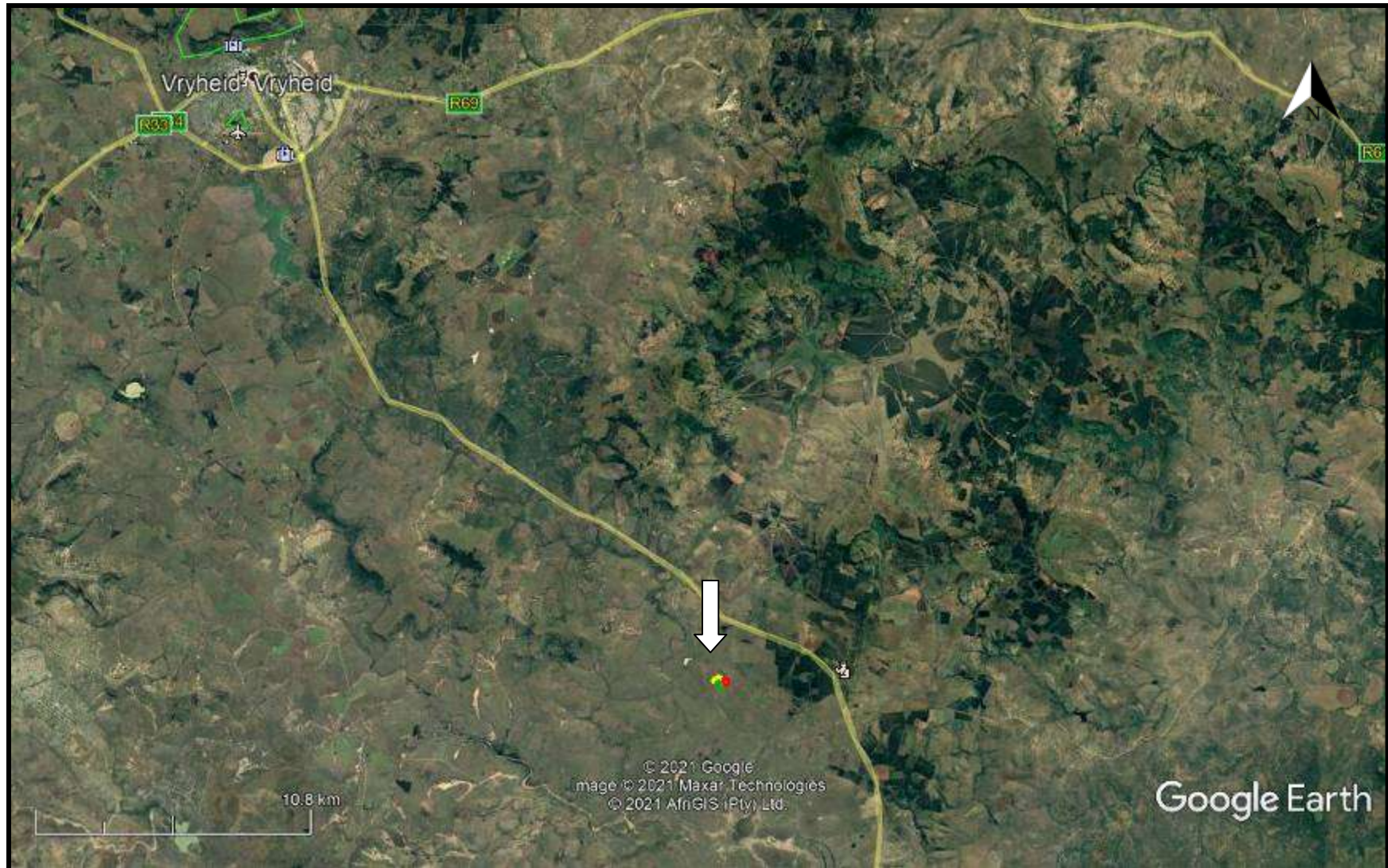


FIG. 2: AERIAL OVERVIEW OF THE STUDY AREA



FIG. 3: TOPOGRAPHICAL OVERVIEW OF THE STUDY AREA (1996)

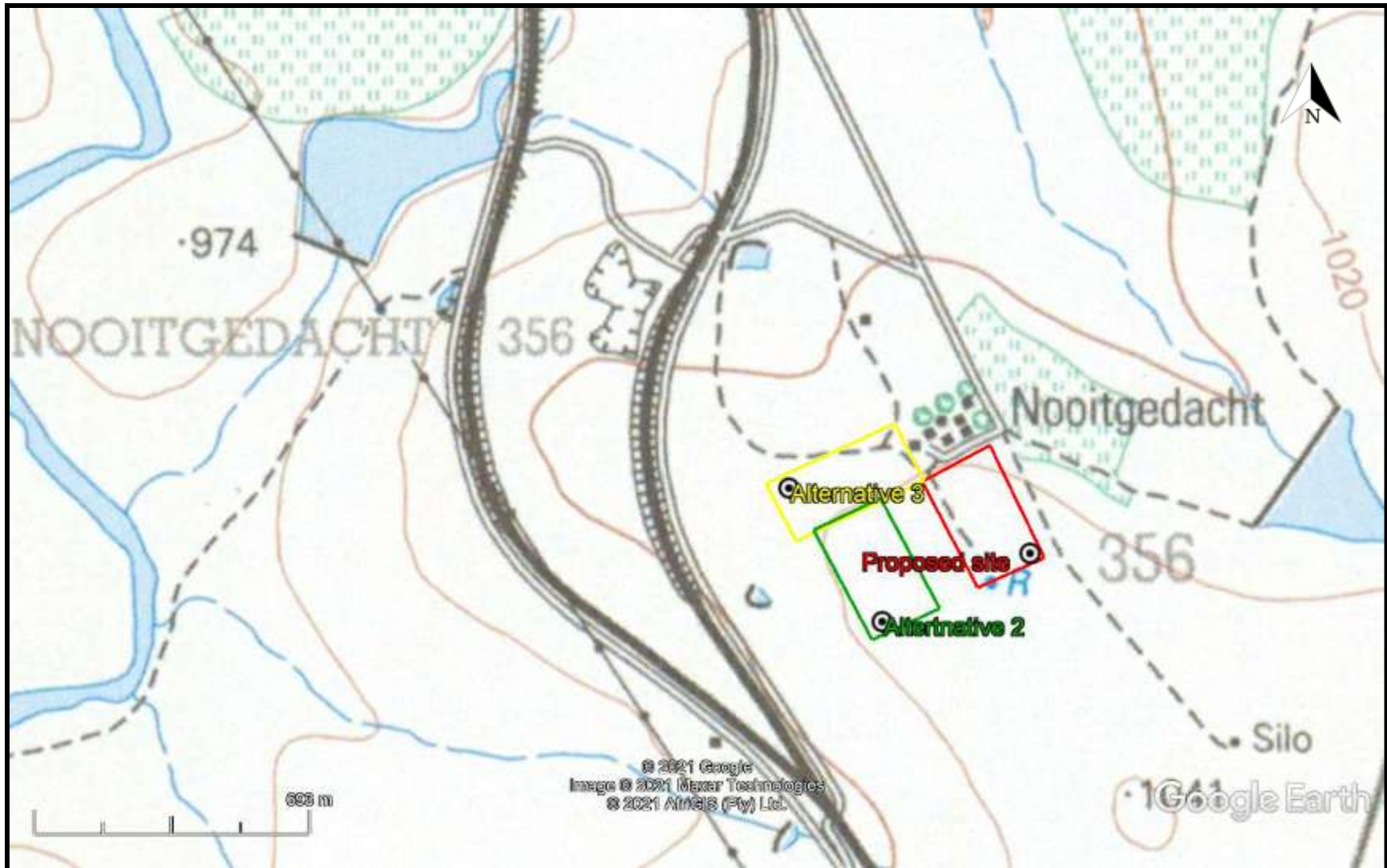


FIG. 4: SCENIC VIEWS OF THE SITE



The desktop study consisted of analysing various maps for evidence of prior habitation in the study area, as well as for previous archaeological surveys. The archaeological database indicates that there are archaeological sites in the general area (fig. 5). These sites include all types of Stone Age and Iron Age sites. No sites occur in the study area.

No national monuments, battlefields, or historical cemeteries are known to occur in the study area.

The 1942 topographical map (fig. 6) 1:50 000 topographical map indicates that the area was under wattle afforestation. The Farm Nooitgedacht occurs ~1km to the northwest. Thus the buildings in the study area are probably younger than 60 years.

The study area is of medium palaeontological sensitivity. However, the piggery will not extend into unweathered fossil bearing layers.

No buildings will be demolished for the piggery extension.

Since no heritage features occur in the study area , it should be exempt from further HIA processes.

FIG. 5: LOCATION OF KNOWN HERITAGE SITES NEAR THE STUDY AREA

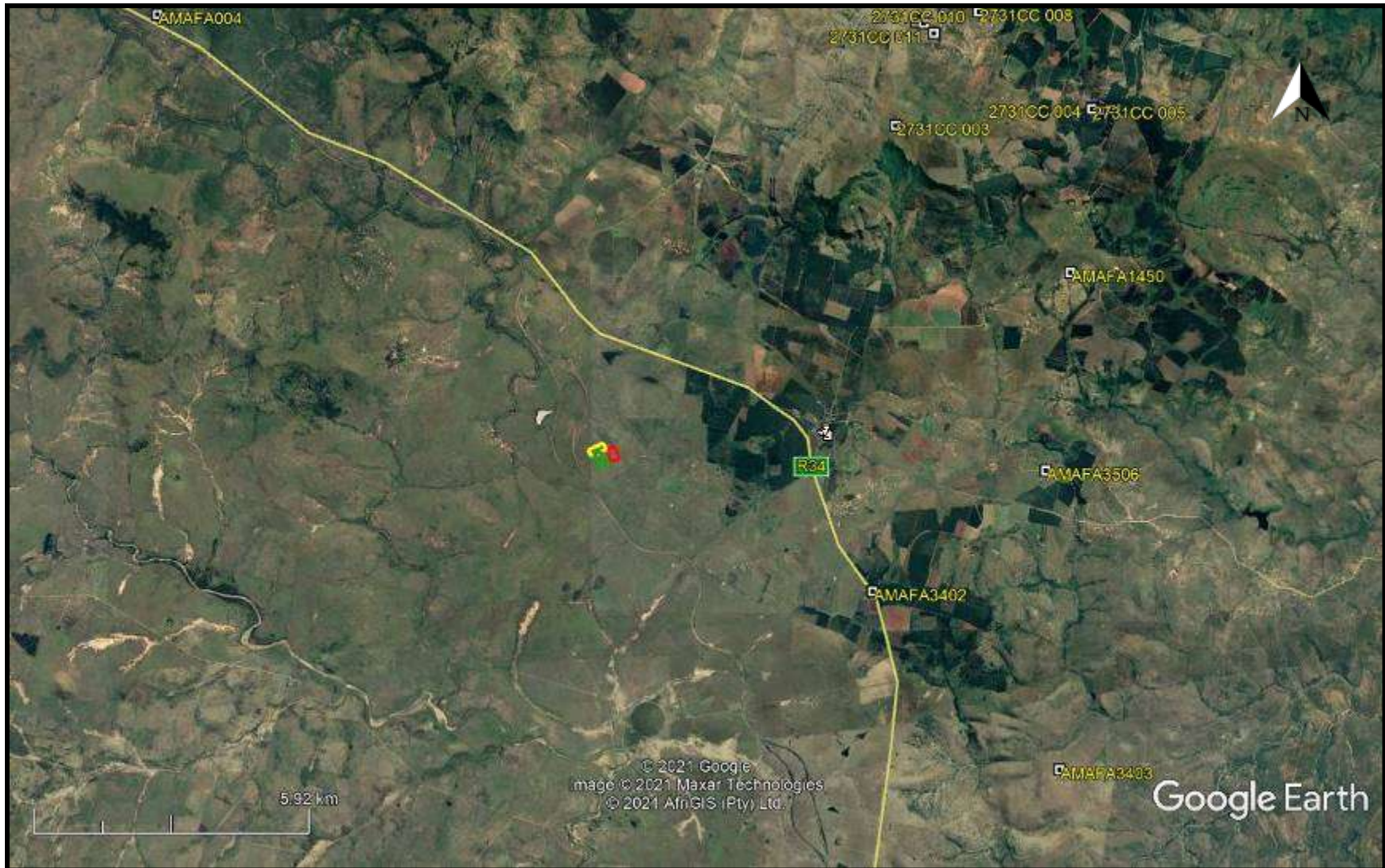


FIG. 6: STUDY AREA IN 1942

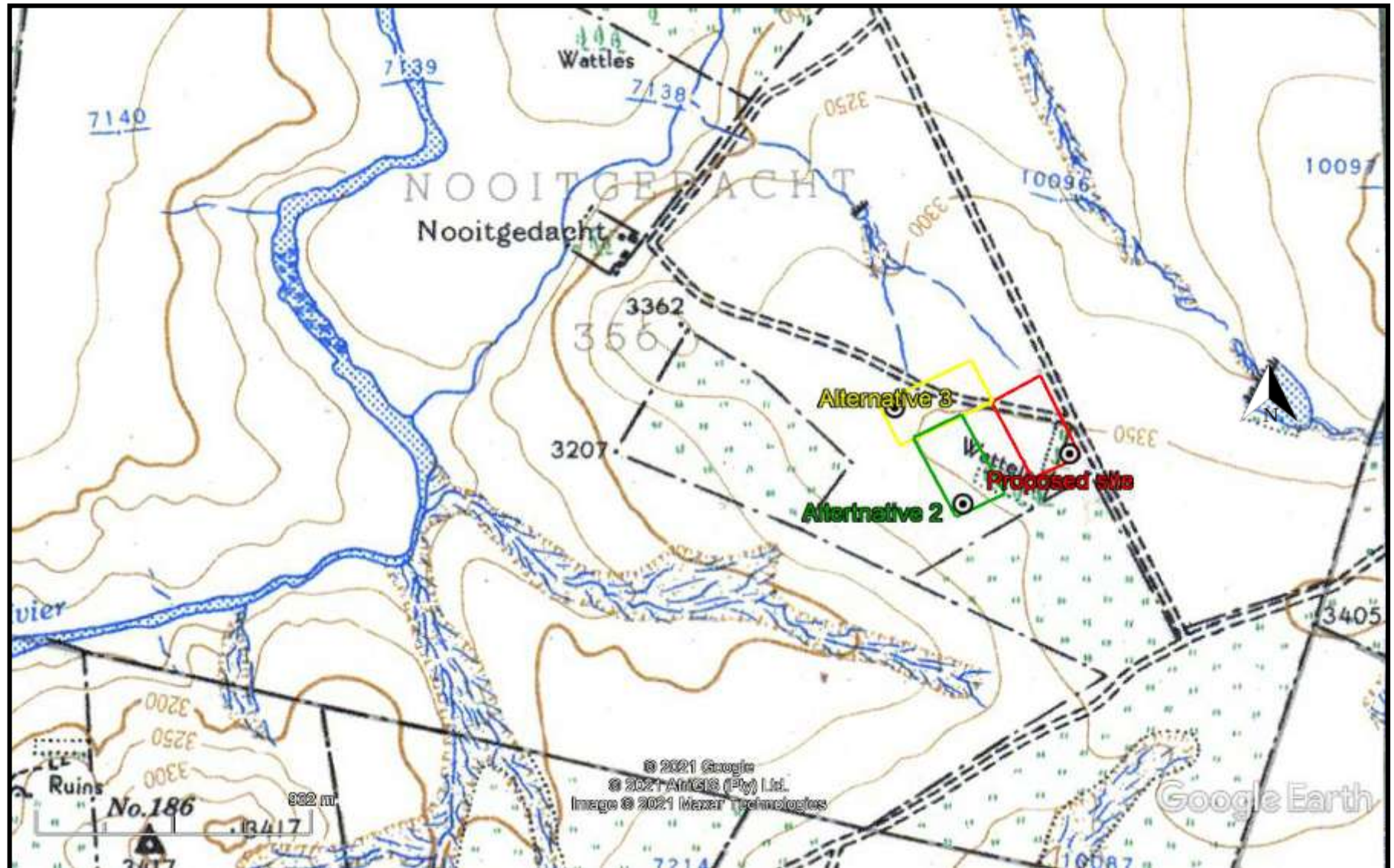


FIG. 8: PALAEOLOGICAL SENSITIVITY



COLOUR	SENSITIVITY	REQUIRED ACTION
RED	VERY HIGH	field assessment and protocol for finds is required
ORANGE/YELLOW	HIGH	desktop study is required and based on the outcome of the desktop study, a field assessment is likely
GREEN	MODERATE	desktop study is required
BLUE	LOW	no palaeontological studies are required however a protocol for finds is required
GREY	INSIGNIFICANT/ZERO	no palaeontological studies are required
WHITE/CLEAR	UNKNOWN	these areas will require a minimum of a desktop study. As more information comes to light, SAHRA will continue to populate the map.

CONCLUSION

No heritage sites were noted in the desktop analyses, nor are any likely to occur in the study area. The application should be exempt from further HIA studies.

REFERENCES

2730DD Vryheid 1942, 1996

SAHRIS Database

Umlando Database

EXPERIENCE OF THE HERITAGE CONSULTANT

Gavin Anderson has a M. Phil (in archaeology and social psychology) degree from the University of Cape Town. Gavin has been working as a professional archaeologist and heritage impact assessor since 1995. He joined the Association of Professional Archaeologists of Southern Africa in 1998 when it was formed. Gavin is rated as a Principle Investigator with expertise status in Rock Art, Stone Age and Iron Age studies. In addition to this, he was worked on both West and East Coast shell middens, Anglo-Boer War sites, and Historical Period sites.

DECLARATION OF INDEPENDENCE

I, Gavin Anderson, declare that I am an independent specialist consultant and have no financial, personal or other interest in the proposed development, nor the developers or any of their subsidiaries, apart from fair remuneration for work performed in the delivery of heritage assessment services. There are no circumstances that compromise the objectivity of my performing such work.



Gavin Anderson
Archaeologist/Heritage Impact Assessor