

CROWN LANDS
Sect. 17, Act No. 9 of 1927

S.G. No 205/1948
Approved.
Emanuel Edmuntz
Surveyor-General.
26-8-1948

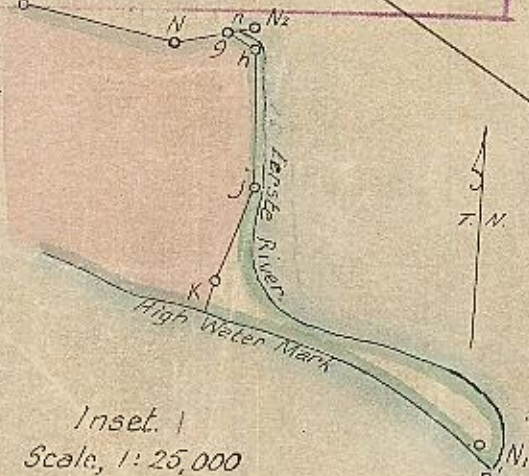
Cancellation withdrawn.
B. B. B. B. B.
Surveyor General.
21-1-1971

Sides Cape Roads	Angles	Co-ordinates	
		y	x
AB 148.25	A 74.16.20	A -3411.93	+1594.92
BC 803.34	B 100.29.50	B -4557.66	+1518.83
CD 861.77	C 225.8.10	C -4756.05	+2297.29
DE 824.38	D 167.8.10	D -5498.07	+2735.52
EF 25.00	E 142.57.40	E -6096.74	+3302.27
FG 185.93	F 137.29.10	F -6100.88	+3326.92
GH 162.15	G 139.56.20	G -5999.66	+3482.88
HJ 550.00	H 300.7.0	H -5844.56	+3530.17
JK 190.00	J 201.0.0	J -6247.28	+3904.76
KL 215.99	K 193.59.50	K -6423.53	+3975.71
LM 301.66	L 173.40.40	L -6637.46	+4005.51
MN 134.05	M 184.32.20	M -6929.84	+4079.78
NN ² 70.69	N 200.51.20	N -7061.97	+4102.40
NN ¹ 414.82	N ² 112.30.40	N ² -7131.33	+4088.74
N'S 3298.14	N' 49.38.40	N' -7361.21	+4434.04
ST 427.24	S 99.51.10	S -4083.43	+4068.14
TU 422.33	T 204.48.20	T -4057.47	+3641.69
UV 3.48	U 47.14.10	U -3857.32	+3269.80
VW 150.17	V 200.2.20	V -3860.69	+3270.67
WX 1200.47	W 269.54.50	W -4010.15	+3256.11
XY 150.00	X 269.59.30	X -3895.54	+2061.12
YZ 175.02	Y 90.2.30	Y -3746.22	+2075.42
ZA 202.89	Z 269.58.30	Z -3729.41	+1901.21
AA 345.57	A' 104.2.30	A' -3527.45	+1920.61

Macassar - 6858.275 + 4039.864
Titus Kraal - 4092.15 + 3601.63

The Figure - High Water Mark n'Eerste River n'k,l,b,g represents:-
The farm DRIFT SANDS 789
(Division of Stellenbosch)
Scale 1:75,000
C. Roads.

CANCELLED
A Portion of (Farm 789, Stellenbosch)
This cancelled portion substituted
Vide Diagram 430/71 (FARM 789)
G.R. 1973.501.25038. FILE 8.....
E. Edmuntz
SURVEYOR-GENERAL.



Inset 1
Scale, 1:25,000

The Figure A.B.C.D.E.F.G.H.J.K.L.M.N.n Eerste River n'High Water Mark Indian Ocean. s'T.U.V.W.X.Y.Z.A' represents 6830.5856 *Morges of land being the farm

DRIFT SANDS

situate in Cape Division, Province of Cape of Good Hope.
Framed in terms of Sect.39 of Act 9/1927 from a survey by A.J.L. Home in September 9/13 (Plan 2830^{o.k.})

This diagram is annexed to
No. 231/48
dd 20-11-48 in favour of
Union of South Africa

Cent. Regd. Crown Title
Ch. C. Tille
Government of the

S.G. File No 14572
Plan 2830^{o.k.}
Deg. Shs. AH-2B^c-2AA M549, M552
2A^d, BH-8C^d 8C^c AH-2AB(3276)

Registrar of Deeds

FOR EVIDENCE
SEE PAGE OF
Cape Farm 544