

HERITAGE SCREENER

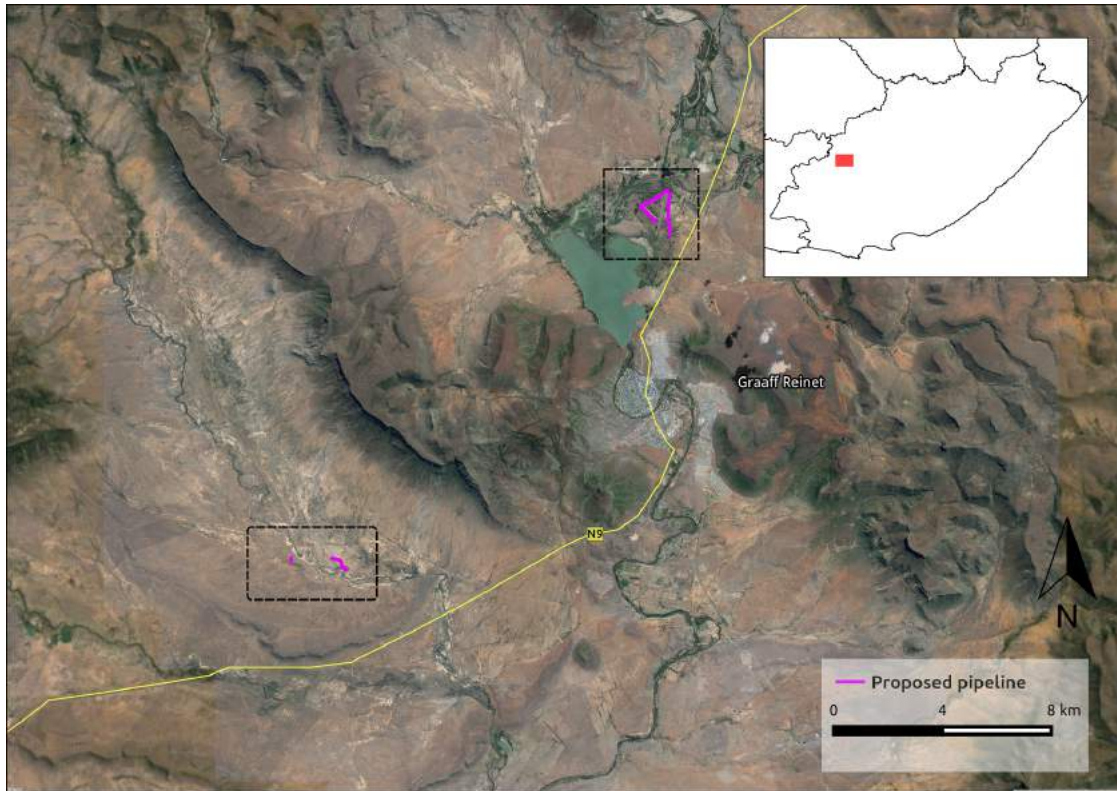
CTS Reference Number:	CTS16_009	
Client:	CEN Integrated Environmental Management	
Date:	10 February 2016	
Title:	Graaff Reinet Water Pipelines	
Recommendation by CTS Heritage Specialists: (Type 2)	<p>(2) The heritage resources and the area proposed for development are only partially recorded - It is recommended that:</p> <ul style="list-style-type: none">- an AIA be conducted in the southern location for pipelines N13-156 and N13-160. For pipeline NBF, CTS recommends a walk-through to ensure that no graves are located on either side of the road.- no PIA or monitoring be conducted and a Chance Finds Procedure should be included in the Environmental Management Plan if any material of palaeontological significance is found.	

Figure 1a. Satellite image with proposed development area indicated in the Eastern Cape province.

1. Proposed Development Summary

CEN is conducting a Basic Assessment for the Mimosadale and Northern wellfields in Graaff Reinet, as well as planned pipelines.

2. Application References

Name of relevant heritage authority(s)	Eastern Cape Provincial Heritage Resources Authority (ECPHRA)
Name of decision making authority(s)	Department of Economic Development, Environmental Affairs and Tourism (DEDEA)

3. Property Information

Farm Name and Number	Grasrand 334
Local Municipality	Camdeboo
District Municipality	Cacadu
Previous Magisterial District	Graaff-Reinet
Province	Eastern Cape
Current Use	Agricultural, Residential, Road reserve
Current Zoning	Precise zoning unknown
Total Extent	< 4.5 km

4. Nature of the Proposed Development

Surface area to be affected/destroyed	< 4.5 km, with servitude of 3 m
Depth of excavation (m)	Unknown

Height of development (m)	NA
Expected years of operation before decommission	NA

5. Category of Development

Triggers: Section 38(8) of the National Heritage Resources Act	X
Triggers: Section 38(1) of the National Heritage Resources Act	
1. Construction of a road, wall, powerline, pipeline, canal or other similar form of linear development or barrier over 300m in length.	X
2. Construction of a bridge or similar structure exceeding 50m in length.	
3. Any development or activity that will change the character of a site-	
a) exceeding 5 000m ² in extent	
b) involving three or more existing erven or subdivisions thereof	
c) involving three or more erven or divisions thereof which have been consolidated within the past five years	
4. Rezoning of a site exceeding 10 000m ²	
5. Other (state):	

6. Additional Infrastructure Required for this Development

NA

7. Mapping - Please see Appendices 3 and 4 for legend keys and methodology.

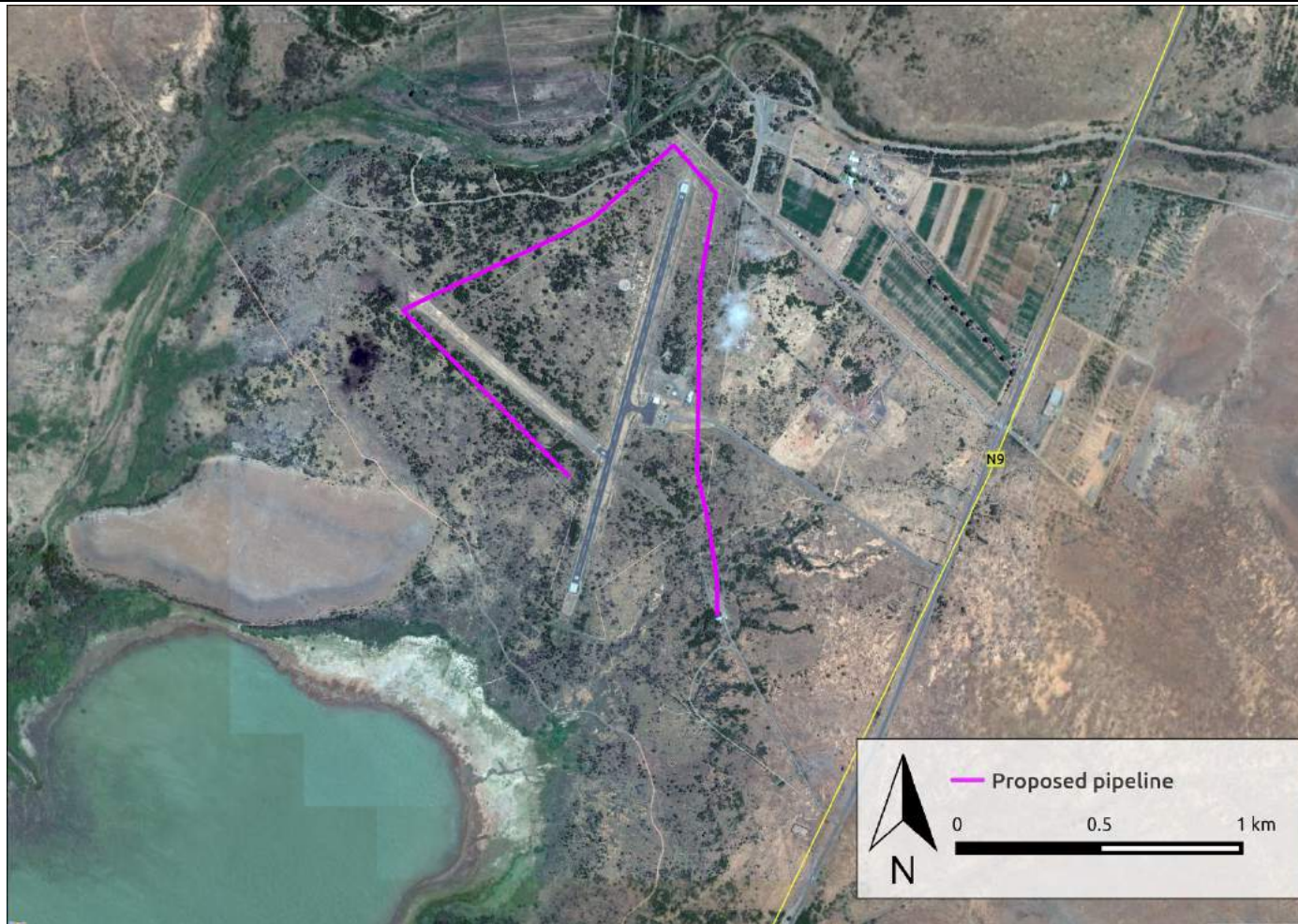


Figure 1b. Overview Map. Satellite image with proposed development indicated.



Figure 1c. Overview Map. Satellite image with proposed development indicated.

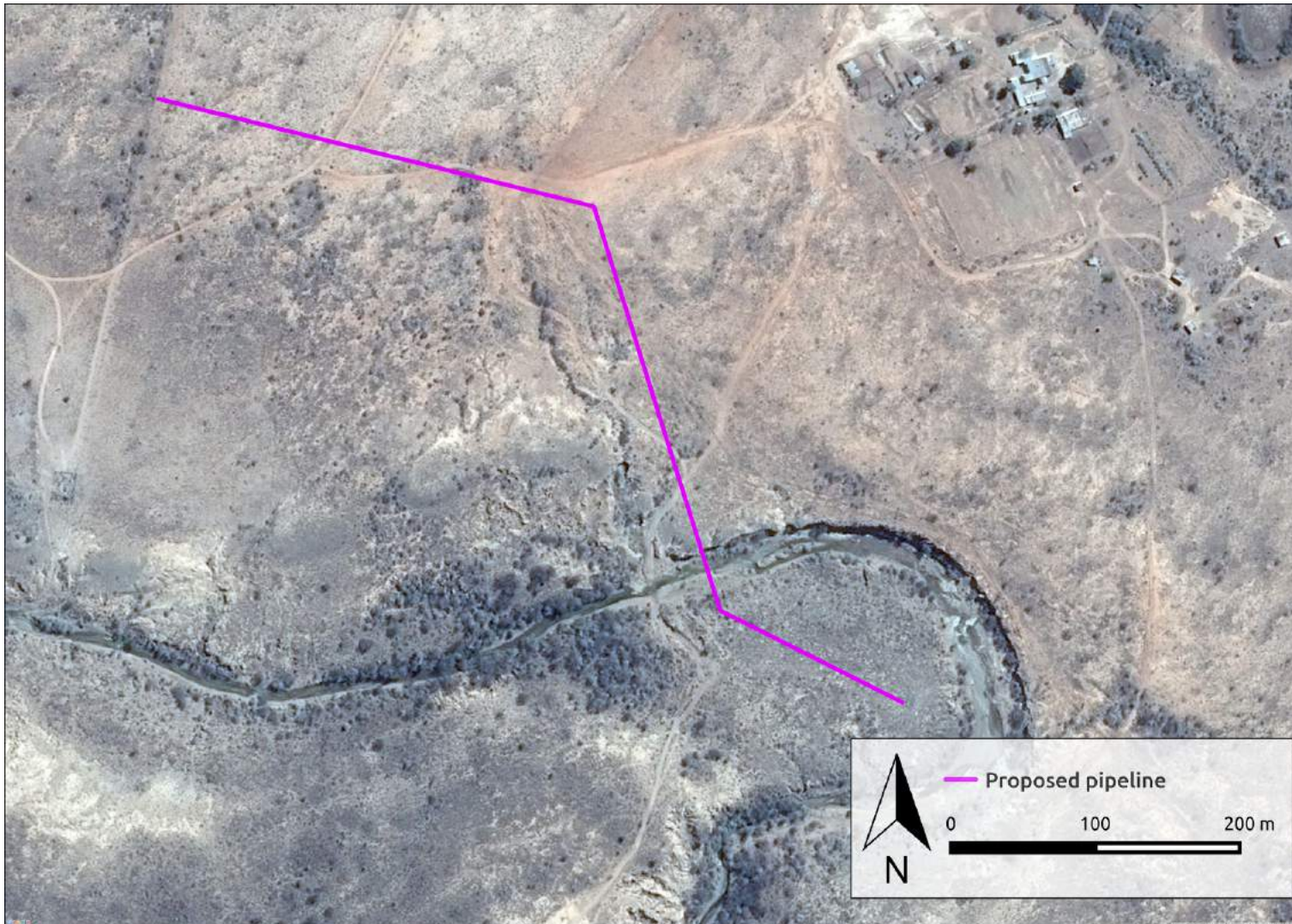
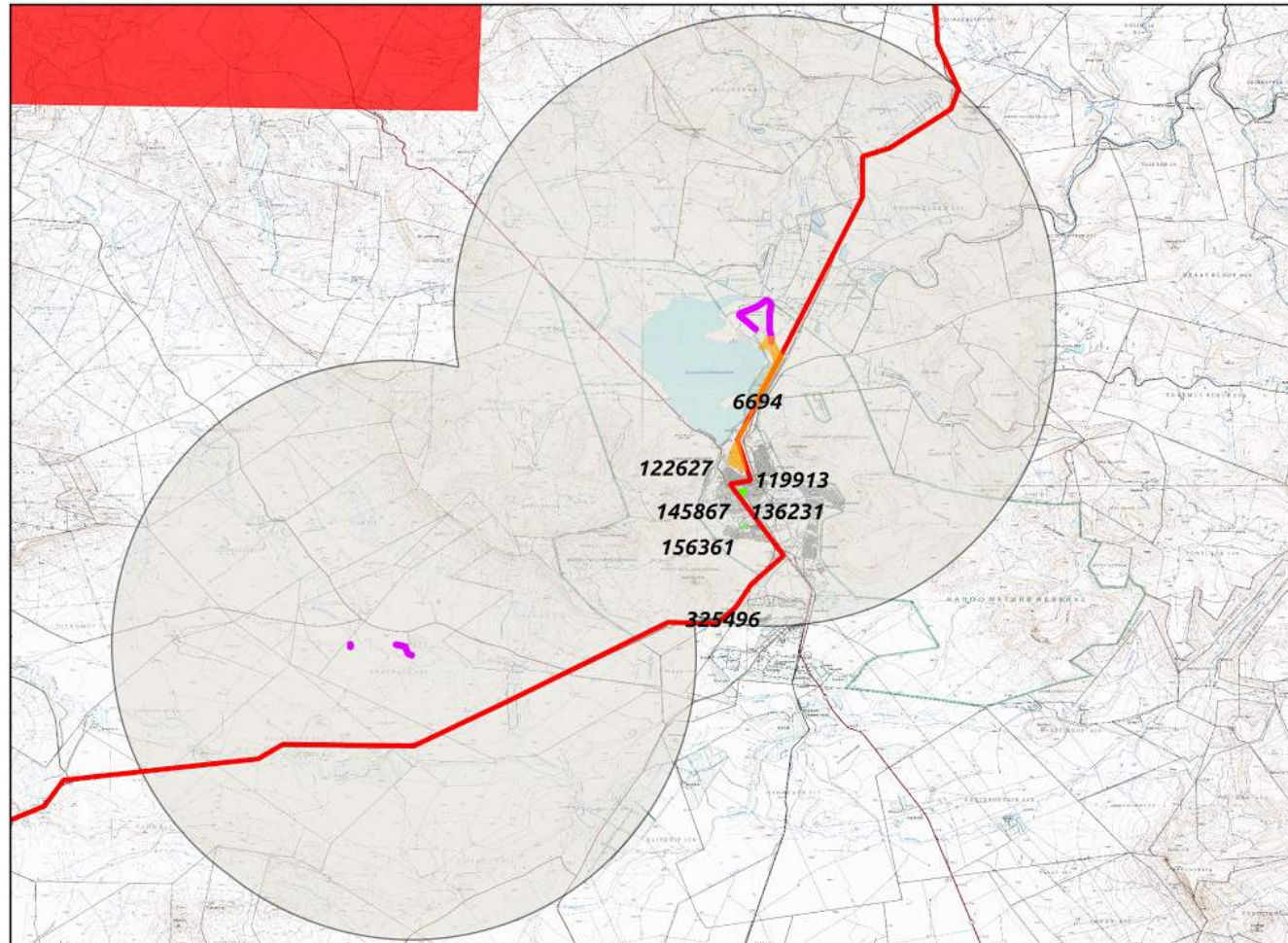


Figure 1d. Overview Map. Satellite image with proposed development indicated.



CEDAR TOWER
SERVICES



Legend

- Proposed pipeline
- Inclusion zone 10km

Area surveys

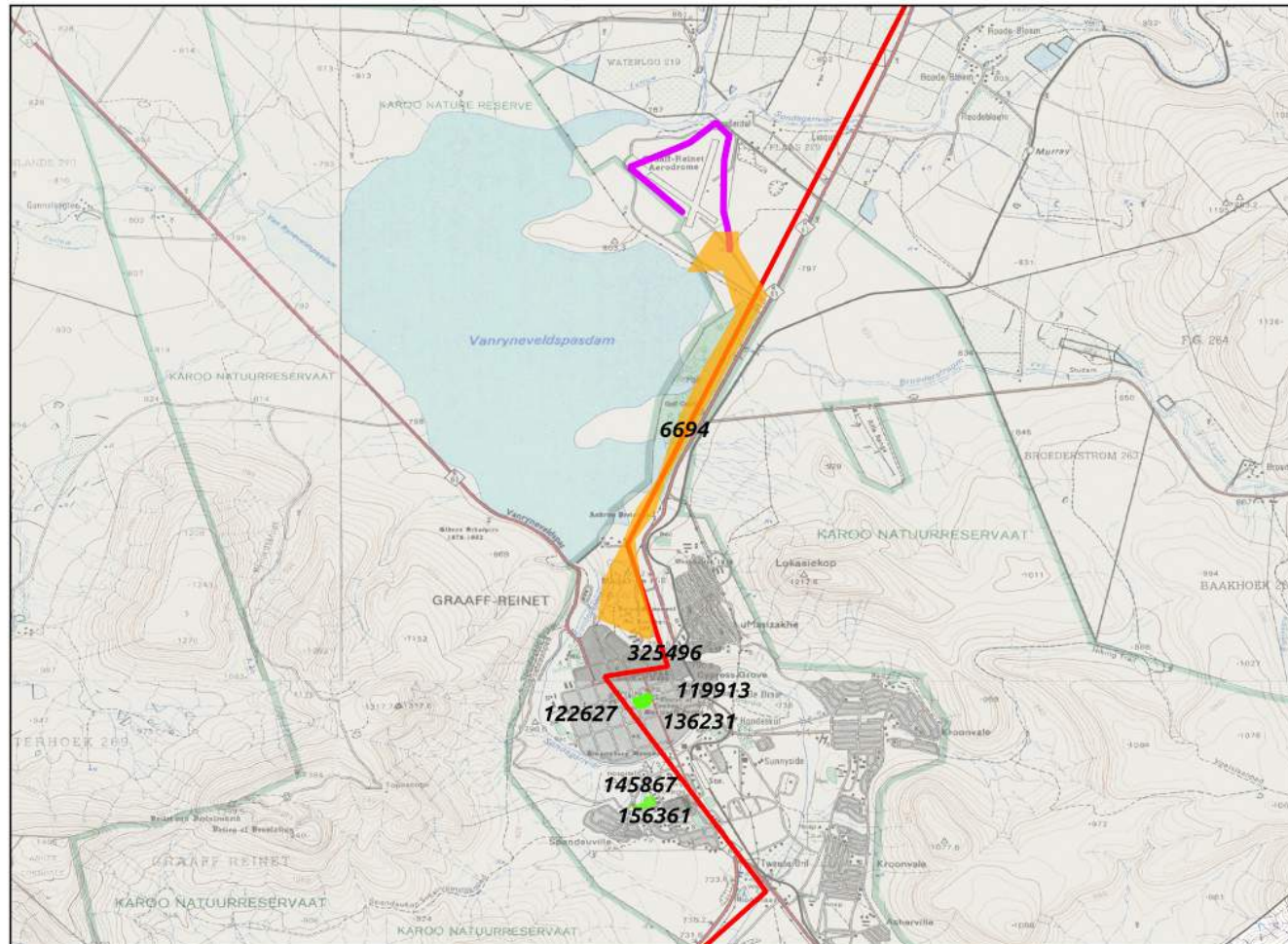
- High coverage
- Medium coverage

Line surveys

- High coverage
- Low coverage

0 5 10 km

Figure 2a. HIAs Map. Previous Heritage Impact Assessments done in and near the proposed development area (PIAs excluded) with SAHRIS NID labels indicated.



Legend

— Proposed pipeline

Area surveys

■ High coverage

■ Medium coverage

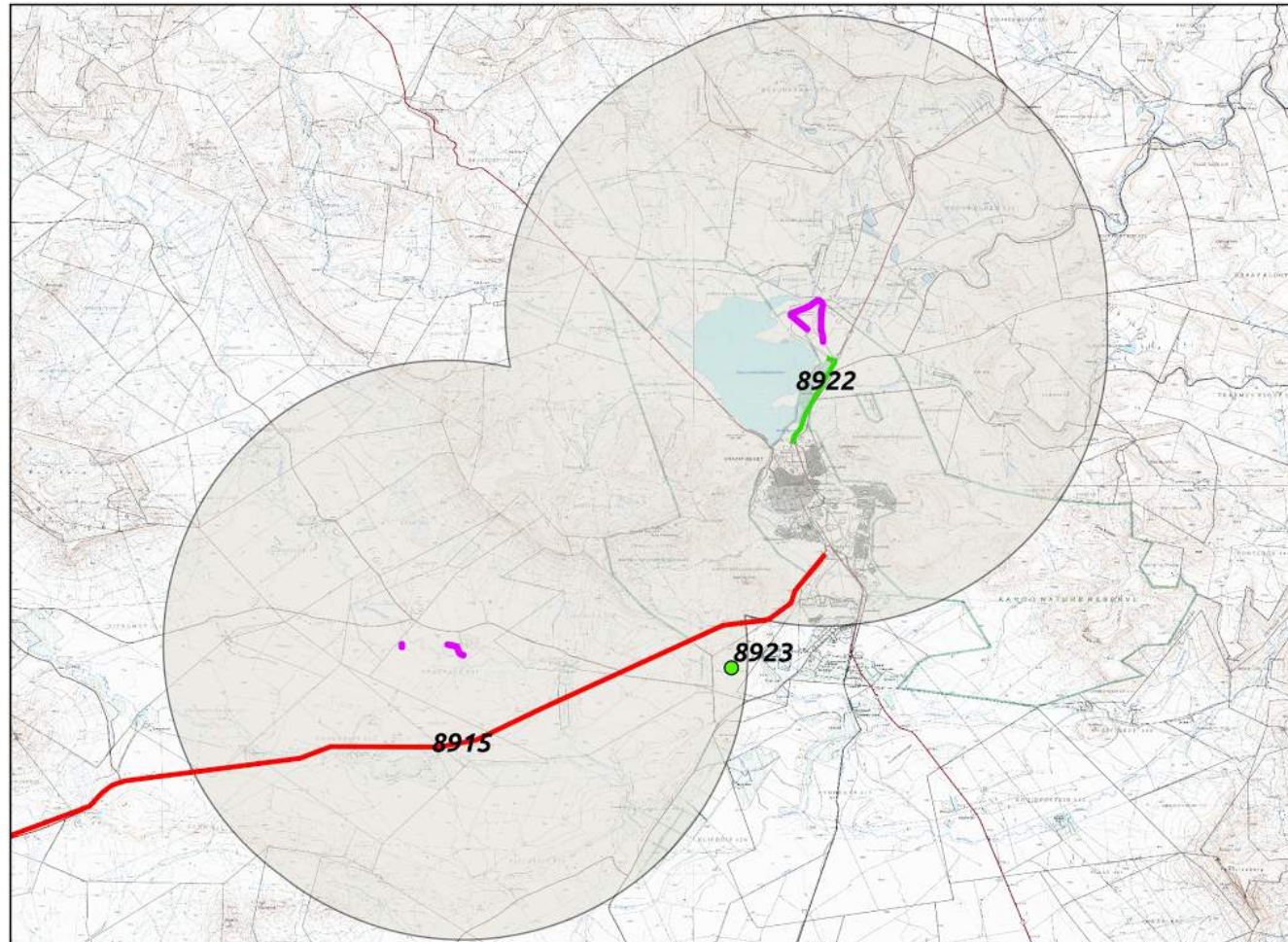
Line surveys

— High coverage

— Low coverage



Figure 2b. HIAs Map. Close-up of previous surveys (PIAs excluded) with SAHRIS NID labels indicated.



Legend

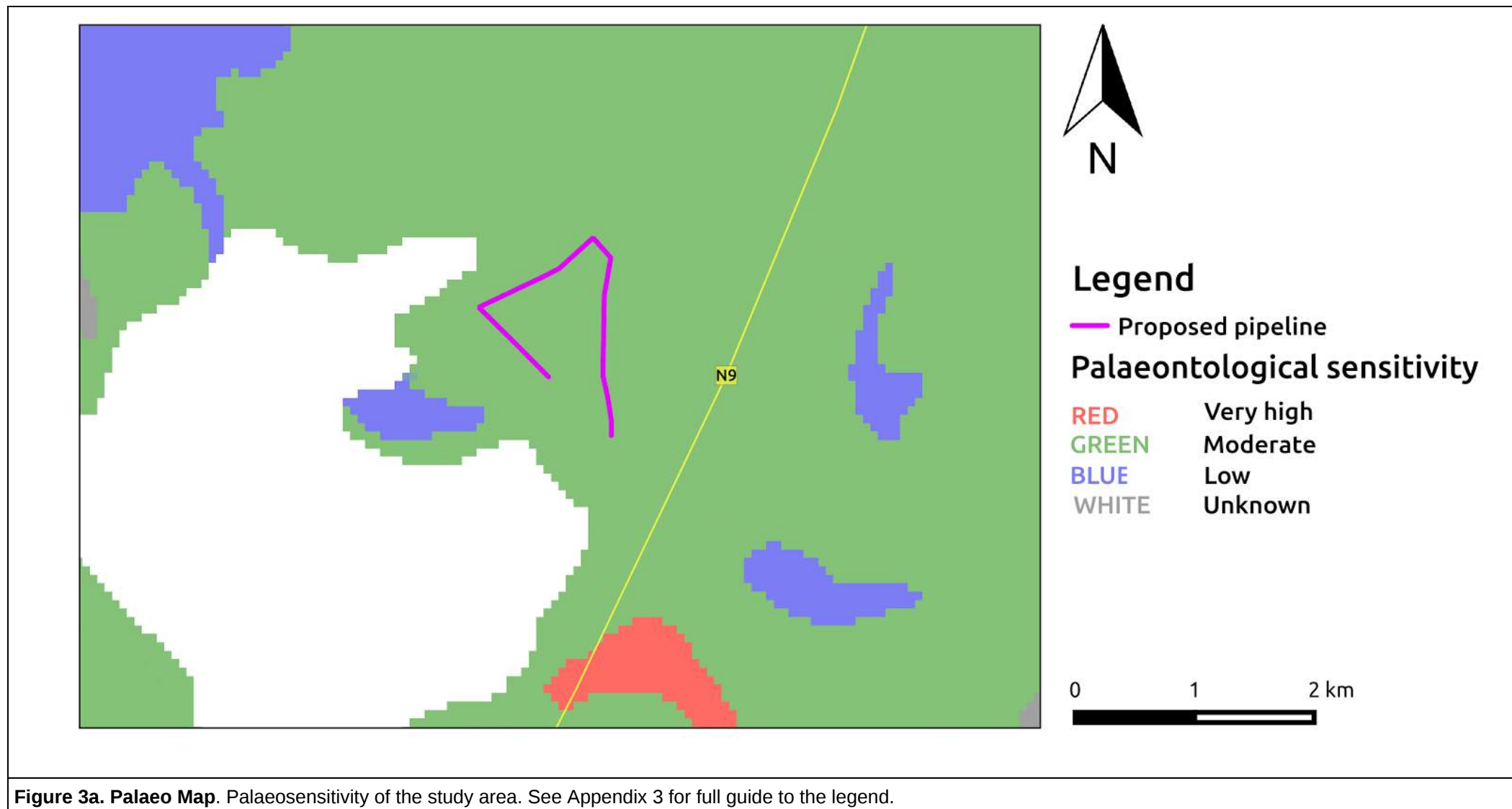
- Proposed pipeline
- Inclusion zone 10km

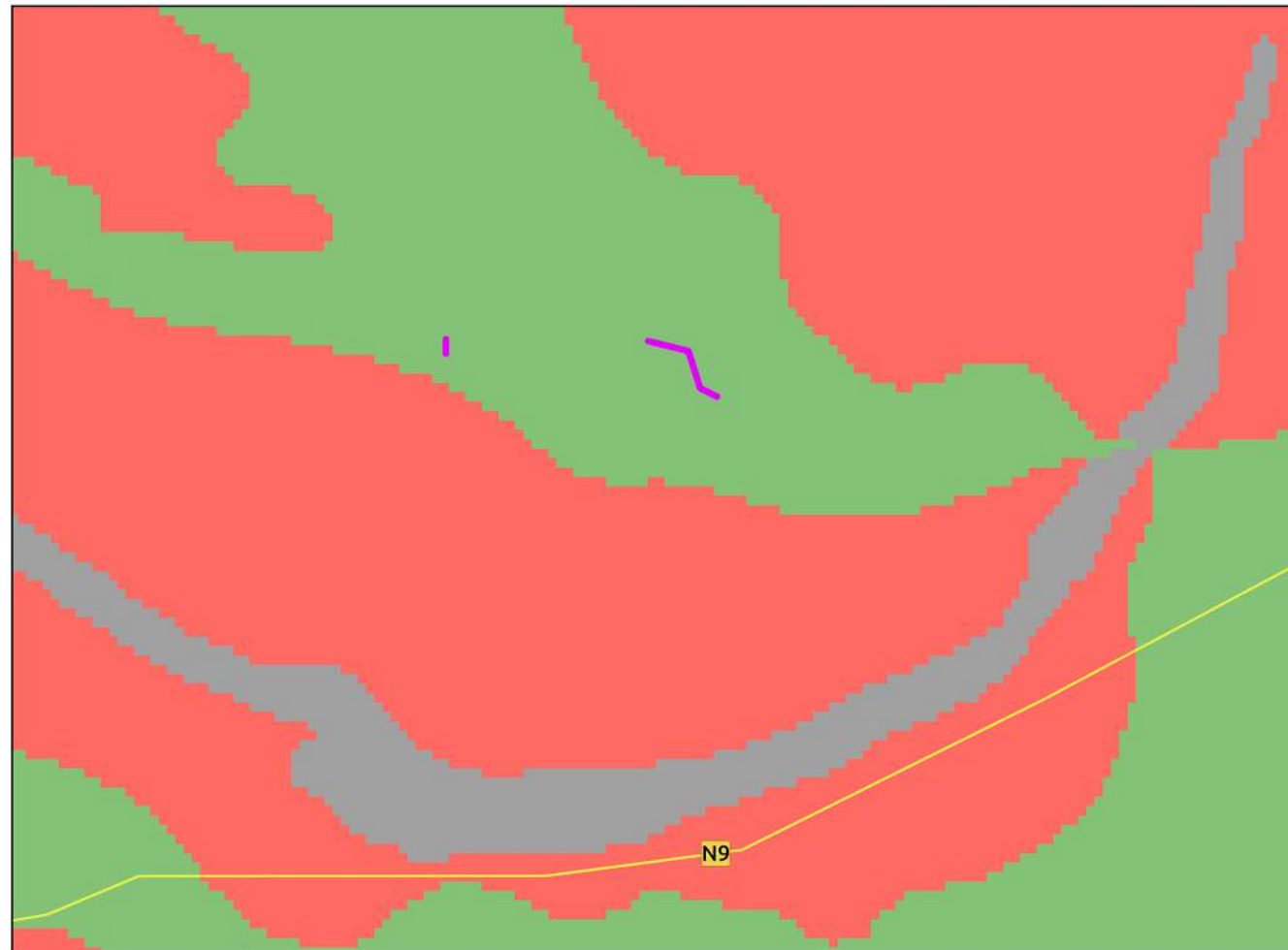
Previous PIAs

- High coverage
- Low coverage
- High coverage



Figure 2c. PIAs Map. Previous Palaeontological Impact Assessments done in and near the proposed development, with SAHRIS NID labels indicated.





Legend

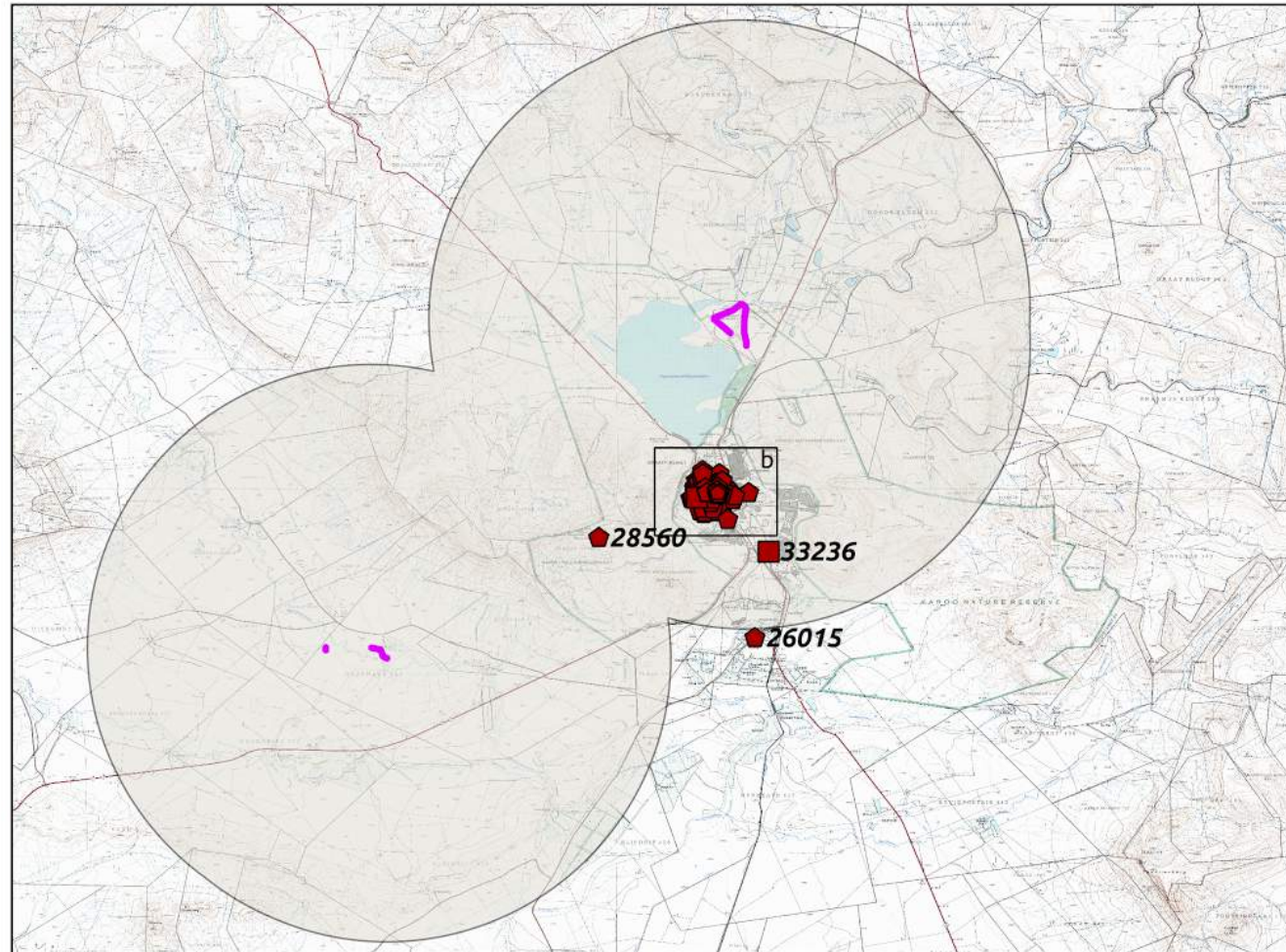
 Proposed pipeline

Palaeontological sensitivity

RED	Very high
ORANGE	High
GREEN	Moderate
BLUE	Low
GREY	Insignificant/zero
WHITE	Unknown



Figure 3b. Palaeo Map. Palaeosensitivity of the study area. See Appendix 3 for full guide to the legend.



Legend

- Proposed pipeline
- Inclusion zone 10km

Heritage resources

Type

- ◊ Structures, Monuments & Memorials
- ◻ Liv. Heritage/Sacred sites, Burial Grounds and Graves, Natural, Place
- △ Conservation Area, Cultural Landscape

Grading

DARK RED I & II



0 5 10 km



Figure 4a. Heritage Resources Map. Heritage resources previously identified in and near the study area, with SAHRIS Site IDs indicated (see figure 4b for inset).



8. Heritage statement and character of the area

CEN Integrated Environmental Management is conducting a Basic Assessment for the Mimosadale and Northern wellfields in Graaff-Reinet, as well as planned pipelines. CTS conducted the Heritage Screening for this area within a 10km inclusion zone.

Within this area, several previous assessments have been done since 2008, including five Heritage Impact Assessments (HIAs), one Archaeological Impact Assessment (AIA) and three Palaeontological Impact Assessments (PIAs). The proximity of the northernmost pipeline to the town of Graaff Reinet has resulted in a sites and surveys map that shows dense clusters of heritage resources very close to the proposed pipeline development: the four HIAs and one AIA conducted in the town (May 2013 a&b; Webley, Hart, Schietecatte 2013; Mngomezulu 2014 a&b) account for several of the Provincial Heritage Sites recorded in Graaff-Reinet. However, none of these heritage resources will be impacted by the proposed pipeline development. One HIA (Binneman 2011) was conducted in close proximity to where the northernmost pipeline will be situated, and called for an exemption from an AIA. The pipeline Northern Borehole Field is located along existing roads which are 3m wide. Therefore most of the area is already disturbed by previous linear developments. The proximity of the proposed pipeline to several rivers (including the Sondagsrivier) could result in Stone Age archaeological material being found. The southernmost proposed pipelines, however, are situated in a seemingly undisturbed area near the Droerivier, where no previous assessments have been conducted, and where Stone Age archaeology may occur. **It is therefore recommended that an AIA be conducted in the southern location for pipelines N13-156 and N13-160. For pipeline NBF, CTS recommends a walk-through to ensure that no graves are located on either side of the road**, but it is expected that no heritage resources will be impacted by the pipelines.

In terms of palaeontology, the proposed development area is underlain by Quaternary alluvium (Q-a) of apparently moderate fossil sensitivity according to the SAHRIS palaeo-map, however John Almond (2011) states that this is Quaternary superficial sediment (e.g. river alluvium, alluvial fans) of low palaeontological sensitivity. Further formations include Karoo Dolerite of no fossil sensitivity, and the Middleton Formation, which is of very high fossil sensitivity (containing grey and red mudstone and subordinate sandstone). Despite this highly sensitive formation potentially being impacted by the proposed development, a PIA conducted in 2011 by Almond on the same formation and in the same area states that no further mitigation is necessary because the majority of this proposed pipeline is not overlying these highly sensitive layers, *fossil heritage is likely to have been compromised by baking of fossiliferous bedrocks by adjacent igneous intrusions* (dolerite) (Almond 2011a, p1), and excavations deeper than 1.5m are not foreseen. This study (which has been endorsed by SAHRA) was conducted directly over the northernmost area proposed for this assessment and it is part of the same pipeline upgrade (2016).

In the southernmost area of proposal the proposed pipelines in this location are underlain by formations of only moderate sensitivity, and **it is therefore recommended that no PIA or monitoring be conducted and a Chance Finds Procedure should be included in the Environmental Management Plan.**

APPENDIX 1 - Site Lists

List of sites within 10km inclusion zone and outside proposed development area

Site ID	Site no	Full Site Name	Site Type	Grading	Declaration
33236	9/2/033/55/1	Dr R.M. Sobukwe	Monuments & Memorials, Burial Grounds & Graves	Grade I	National Heritage Site
28560	9/2/033/0024	Valley of Desolation, Graaff-Reinet District	Building	Grade II	Provincial Heritage Site
26015	Graaff-ReinetTemp	Dutch Reformed Church, Adendorp, Graaff-Reinet District	Building	Grade II	Provincial Heritage Site
28781	9/2/033/0001-006	Hyena trap, Bluegum House, Graaff-Reinet District	Building	Grade II	Provincial Heritage Site
28775	9/2/033/0002-297	83 Somerset Street, Graaff-Reinet	Building	Grade II	Provincial Heritage Site
28776	9/2/033/0002-298	7 Bourke Street, Graaff-Reinet	Building	Grade II	Provincial Heritage Site
28777	9/2/033/0002-299	10 North Street, Graaff-Reinet	Building	Grade II	Provincial Heritage Site
28778	9/2/033/0002-300	7 North Street, Graaff-Reinet	Building	Grade II	Provincial Heritage Site
28773	9/2/033/0002-301	102 Somerset Street, Graaff-Reinet	Building	Grade II	Provincial Heritage Site
28774	9/2/033/0002-302	94 Somerset Street, Graaff-Reinet	Building	Grade II	Provincial Heritage Site
28767	9/2/033/0002-303	90 and 90A Somerset Street, Graaff-Reinet	Building	Grade II	Provincial Heritage Site
28768	9/2/033/0002-304	42 Somerset Street, Graaff-Reinet	Building	Grade II	Provincial Heritage Site
28769	9/2/033/0002-305	84 Somerset Street, Graaff-Reinet	Building	Grade II	Provincial Heritage Site
28770	9/2/033/0002-306	19 North Street, Graaff-Reinet	Building	Grade II	Provincial Heritage Site
28771	9/2/033/0002-307	26 Somerset Street, Graaff-Reinet	Building	Grade II	Provincial Heritage Site
28772	9/2/033/0002-308	79 Somerset Street, Graaff-Reinet	Building	Grade II	Provincial Heritage Site
28761	9/2/033/0002-309	72 Somerset Street, Graaff-Reinet	Building	Grade II	Provincial Heritage Site
28762	9/2/033/0002-310	67 Somerset Street, Graaff-Reinet	Building	Grade II	Provincial Heritage Site
28763	9/2/033/0002-311	66 Somerset Street, Graaff-Reinet	Building	Grade II	Provincial Heritage Site
28764	9/2/033/0002-312	48 Somerset Street, Graaff-Reinet	Building	Grade II	Provincial Heritage Site

28765	9/2/033/0002-313	7 Park Street, Graaff-Reinet	Building	Grade II	Provincial Heritage Site
28766	9/2/033/0002-314	87 Somerset Street, Graaff-Reinet	Building	Grade II	Provincial Heritage Site
28755	9/2/033/0002-315	76 Caledon Street, Graaff-Reinet	Building	Grade II	Provincial Heritage Site
28756	9/2/033/0002-316	126 Cradock Street, Graaff-Reinet	Building	Grade II	Provincial Heritage Site
28757	9/2/033/0002-317	6 Park Street, Graaff-Reinet	Building	Grade II	Provincial Heritage Site
28758	9/2/033/0002-318	4 Park Street, Graaff-Reinet	Building	Grade II	Provincial Heritage Site
28759	9/2/033/0002-319	106 Caledon Street, Graaff-Reinet	Building	Grade II	Provincial Heritage Site
28760	9/2/033/0002-320	102 Caledon Street, Graaff-Reinet	Building	Grade II	Provincial Heritage Site
28750	9/2/033/0002-321	100 Caledon Street, Graaff-Reinet	Building	Grade II	Provincial Heritage Site
28751	9/2/033/0002-322	98 and 98A Caledon Street, Graaff-Reinet	Building	Grade II	Provincial Heritage Site
28752	9/2/033/0002-323	13 North Street, Graaff-Reinet	Building	Grade II	Provincial Heritage Site
28753	9/2/033/0002-324	24 Bourke Street, Graaff-Reinet	Building	Grade II	Provincial Heritage Site
28754	9/2/033/0002-325	18 North Street, Graaff-Reinet	Building	Grade II	Provincial Heritage Site
28744	9/2/033/0002-326	42 North Street, Graaff-Reinet	Building	Grade II	Provincial Heritage Site
28745	9/2/033/0002-327	38 North Street, Graaff-Reinet	Building	Grade II	Provincial Heritage Site
28746	9/2/033/0002-328	24 North Street, Graaff-Reinet	Building	Grade II	Provincial Heritage Site
28747	9/2/033/0002-329	23 North Street, Graaff-Reinet	Building	Grade II	Provincial Heritage Site
28748	9/2/033/0002-330	22 North Street, Graaff-Reinet	Building	Grade II	Provincial Heritage Site
28749	9/2/033/0002-331	21 North Street, Graaff-Reinet	Building	Grade II	Provincial Heritage Site
28738	9/2/033/0002-333	Educamus, 91 Caledon Street, Graaff-Reinet	Building	Grade II	Provincial Heritage Site
28739	9/2/033/0002-334	180 Cradock Street, Graaff-Reinet	Building	Grade II	Provincial Heritage Site
28740	9/2/033/0002-335	18 Parsonage Street, Graaff-Reinet	Building	Grade II	Provincial Heritage Site
28741	9/2/033/0002-336	16 Parsonage Street, Graaff-Reinet	Building	Grade II	Provincial Heritage Site
28742	9/2/033/0002-337	14 Parsonage Street, Graaff-Reinet	Building	Grade II	Provincial Heritage Site
28732	9/2/033/0002-338	12 Parsonage Street, Graaff-Reinet	Building	Grade II	Provincial Heritage Site

28733	9/2/033/0002-339	9 Parsonage Street, Graaff-Reinet	Building	Grade II	Provincial Heritage Site
28734	9/2/033/0002-340	8 Parsonage Street, Graaff-Reinet	Building	Grade II	Provincial Heritage Site
28735	9/2/033/0002-341	44 Somerset Street, Graaff-Reinet	Building	Grade II	Provincial Heritage Site
28736	9/2/033/0002-342	3 Parsonage Street, Graaff-Reinet	Building	Grade II	Provincial Heritage Site
28737	9/2/033/0002-343	30 Stockenström Street, Graaff-Reinet	Building	Grade II	Provincial Heritage Site
28726	9/2/033/0002-344	176 Cradock Street, Graaff-Reinet	Building	Grade II	Provincial Heritage Site
28727	9/2/033/0002-345	155 Cradock Street, Graaff-Reinet	Building	Grade II	Provincial Heritage Site
28728	9/2/033/0002-346	152 Cradock Street, Graaff-Reinet	Building	Grade II	Provincial Heritage Site
28729	9/2/033/0002-347	150 Cradock Street, Graaff-Reinet	Building	Grade II	Provincial Heritage Site
28730	9/2/033/0002-348	138A Cradock Street, Graaff-Reinet	Building	Grade II	Provincial Heritage Site
28731	9/2/033/0002-349	135 Cradock Street, Graaff-Reinet	Building	Grade II	Provincial Heritage Site
28721	9/2/033/0002-351	6 Parsonage Street, Graaff-Reinet	Building	Grade II	Provincial Heritage Site
28722	9/2/033/0002-352	Adampie Cafe, 81 Church Street, Graaff-Reinet	Building	Grade II	Provincial Heritage Site
28723	9/2/033/0002-353	27 Somerset Street, Graaff-Reinet	Building	Grade II	Provincial Heritage Site
28724	9/2/033/0002-354	25 and 25A Somerset Street, Graaff-Reinet	Building	Grade II	Provincial Heritage Site
28725	9/2/033/0002-355	17 Parsonage Street, Graaff-Reinet	Building	Grade II	Provincial Heritage Site
28715	9/2/033/0002-356	22 Parsonage Street, Graaff-Reinet	Building	Grade II	Provincial Heritage Site
28716	9/2/033/0002-357	Elifa, 90 Stockenström Street, Graaff-Reinet	Building	Grade II	Provincial Heritage Site
28717	9/2/033/0002-358	79 Stockenström Street, Graaff-Reinet	Building	Grade II	Provincial Heritage Site
28718	9/2/033/0002-359	77 Stockenström Street, Graaff-Reinet	Building	Grade II	Provincial Heritage Site
28719	9/2/033/0002-360	20 Parsonage Street, Graaff-Reinet	Building	Grade II	Provincial Heritage Site
28720	9/2/033/0002-361	49 Stockenström Street, Graaff-Reinet	Building	Grade II	Provincial Heritage Site
28710	9/2/033/0002-362	10 Stockenström Street, Graaff-Reinet	Building	Grade II	Provincial Heritage Site
28711	9/2/033/0002-363	48 Stockenström Street, Graaff-Reinet	Building	Grade II	Provincial Heritage Site
28712	9/2/033/0002-364	46 Stockenström Street, Graaff-Reinet	Building	Grade II	Provincial Heritage Site



CEDAR TOWER
SERVICES

28713	9/2/033/0002-365	45 Stockenström Street, Graaff-Reinet	Building	Grade II	Provincial Heritage Site
28714	9/2/033/0002-366	44 Stockenström Street, Graaff-Reinet	Building	Grade II	Provincial Heritage Site
28704	9/2/033/0002-367	33 Stockenström Street, Graaff-Reinet	Building	Grade II	Provincial Heritage Site
28705	9/2/033/0002-368	32 Stockenström Street, Graaff-Reinet	Building	Grade II	Provincial Heritage Site
28706	9/2/033/0002-369	8 Park Street, Graaff-Reinet	Building	Grade II	Provincial Heritage Site
28707	9/2/033/0002-370	72 Stockenström Street, Graaff-Reinet	Building	Grade II	Provincial Heritage Site
28708	9/2/033/0002-371	4 Bourke Street, Graaff-Reinet	Building	Grade II	Provincial Heritage Site
28709	9/2/033/0002-372	91 Cradock Street, Graaff-Reinet	Building	Grade II	Provincial Heritage Site
28699	9/2/033/0002-373	15 Cradock Street, Graaff-Reinet	Building	Grade II	Provincial Heritage Site
28700	9/2/033/0002-374	62 Bourke Street, Graaff-Reinet	Building	Grade II	Provincial Heritage Site
28701	9/2/033/0002-375	28 North Street, Graaff-Reinet	Building	Grade II	Provincial Heritage Site
28702	9/2/033/0002-376	3 Queen Street, Graaff-Reinet	Building	Grade II	Provincial Heritage Site
28703	9/2/033/0002-377	83 Church Street, Graaff-Reinet	Building	Grade II	Provincial Heritage Site
28693	9/2/033/0002-379	5 Donkin Street, Graaff-Reinet	Building	Grade II	Provincial Heritage Site
28694	9/2/033/0002-380	140 Cradock Street, Graaff-Reinet	Building	Grade II	Provincial Heritage Site
28695	9/2/033/0002-381	2 Bourke Street, Graaff-Reinet	Building	Grade II	Provincial Heritage Site
28696	9/2/033/0002-382	15 and 15A Rabie Street, Graaff-Reinet	Building	Grade II	Provincial Heritage Site
28697	9/2/033/0002-383	17 Caroline Street, Graaff-Reinet	Building	Grade II	Provincial Heritage Site
28698	9/2/033/0002-384	Tattersalls, 14 Market Square, Graaff-Reinet	Building	Grade II	Provincial Heritage Site
28690	9/2/033/0002-385	63 Bourke Street, Graaff-Reinet	Building	Grade II	Provincial Heritage Site
28691	9/2/033/0002-386	6 Donkin Street, Graaff-Reinet	Building	Grade II	Provincial Heritage Site
28692	9/2/033/0002-387	26 Bourke Street, Graaff-Reinet	Building	Grade II	Provincial Heritage Site
28684	9/2/033/0002-388	7 Cradock Street, Graaff-Reinet	Building	Grade II	Provincial Heritage Site
28685	9/2/033/0002-389	34 Church Street, Graaff-Reinet	Building	Grade II	Provincial Heritage Site
28686	9/2/033/0002-394	1 Bourke Street, Graaff-Reinet	Building	Grade II	Provincial Heritage Site

28687	9/2/033/0002-395	23 Cradock Street, Graaff-Reinet	Building	Grade II	Provincial Heritage Site
28688	9/2/033/0002-396	24 Donkin Street, Graaff-Reinet	Building	Grade II	Provincial Heritage Site
28689	9/2/033/0002-397	87, 89, 91 Cradock Street, Graaff-Reinet	Building	Grade II	Provincial Heritage Site
28679	9/2/033/0002-398	Camdeboo Restaurant, 32 Church Street, Graaff-Reinet	Building	Grade II	Provincial Heritage Site
28680	9/2/033/0002-399	63 Caledon Street, Graaff-Reinet	Building	Grade II	Provincial Heritage Site
28681	9/2/033/0002-400	6 Parliament Street, Graaff-Reinet	Building	Grade II	Provincial Heritage Site
28682	9/2/033/0002-401	Trinity Methodist Church, 53 Caledon Street, Graaff-Reinet	Building	Grade II	Provincial Heritage Site
28683	9/2/033/0002-402	Jan Rupert Centre, 41-43 Middle Street, Graaff-Reinet	Building	Grade II	Provincial Heritage Site
28673	9/2/033/0002-403	Manse, 57 Caledon Street, Graaff-Reinet	Building	Grade II	Provincial Heritage Site
28674	9/2/033/0002-404	Dudley Hall, 55 Caledon Street, Graaff-Reinet	Building	Grade II	Provincial Heritage Site
28675	9/2/033/0002-405	142 Cradock Street, Graaff-Reinet	Building	Grade II	Provincial Heritage Site
28676	9/2/033/0002-406	60 Bourke Street, Graaff-Reinet	Building	Grade II	Provincial Heritage Site
28677	9/2/033/0002-407	24 and 26 Somerset Street, Graaff-Reinet	Building	Grade II	Provincial Heritage Site
28678	9/2/033/0002-408	12 Church Square, Graaff-Reinet	Building	Grade II	Provincial Heritage Site
28667	9/2/033/0002-409	16 Donkin Street, Graaff-Reinet	Building	Grade II	Provincial Heritage Site
28668	9/2/033/0002-410	15 Donkin Street, Graaff-Reinet	Building	Grade II	Provincial Heritage Site
28669	9/2/033/0002-411	13 Donkin Street, Graaff-Reinet	Building	Grade II	Provincial Heritage Site
28670	9/2/033/0002-412	11 Donkin Street, Graaff-Reinet	Building	Grade II	Provincial Heritage Site
28671	9/2/033/0002-413	46 Bourke Street, Graaff-Reinet	Building	Grade II	Provincial Heritage Site
28672	9/2/033/0002-414	10 Donkin Street, Graaff-Reinet	Building	Grade II	Provincial Heritage Site
28662	9/2/033/0002-415	118 Caledon Street, Graaff-Reinet	Building	Grade II	Provincial Heritage Site
28663	9/2/033/0002-416	14 Church Square, Graaff-Reinet	Building	Grade II	Provincial Heritage Site
28664	9/2/033/0002-417	71 Donkin Street, Graaff-Reinet	Building	Grade II	Provincial Heritage Site

28665	9/2/033/0002-418	10 Church Square, Graaff-Reinet	Building	Grade II	Provincial Heritage Site
28666	9/2/033/0002-419	4 Church Square, Graaff-Reinet	Building	Grade II	Provincial Heritage Site
28658	9/2/033/0002-420	6 Church Square, Graaff-Reinet	Building	Grade II	Provincial Heritage Site
28659	9/2/033/0002-421	8 Church Square, Graaff-Reinet	Building	Grade II	Provincial Heritage Site
28660	9/2/033/0002-422	19 Park Street, Graaff-Reinet	Building	Grade II	Provincial Heritage Site
28661	9/2/033/0002-423	18 Park Street, Graaff-Reinet	Building	Grade II	Provincial Heritage Site
28653	9/2/033/0002-424	9 Park Street, Graaff-Reinet	Building	Grade II	Provincial Heritage Site
28654	9/2/033/0002-425	18 Church Square, Graaff-Reinet	Building	Grade II	Provincial Heritage Site
28655	9/2/033/0002-426	1 Milner Street, Graaff-Reinet	Building	Grade II	Provincial Heritage Site
28656	9/2/033/0002-427	7 Muller Street, Graaff-Reinet	Building	Grade II	Provincial Heritage Site
28657	9/2/033/0002-428	39 Park Street, Graaff-Reinet	Building	Grade II	Provincial Heritage Site
28648	9/2/033/0002-429	7 Cross Street, Graaff-Reinet	Building	Grade II	Provincial Heritage Site
28649	9/2/033/0002-430	4 Cross Street, Graaff-Reinet	Building	Grade II	Provincial Heritage Site
28650	9/2/033/0002-431	12 Napier Street, Graaff-Reinet	Building	Grade II	Provincial Heritage Site
28651	9/2/033/0002-432	156-158 Cradock Street, Graaff-Reinet	Building	Grade II	Provincial Heritage Site
28652	9/2/033/0002-433	10 Parliament Street, Graaff-Reinet	Building	Grade II	Provincial Heritage Site
28643	9/2/033/0002-434	64 Donkin Street, Graaff-Reinet	Building	Grade II	Provincial Heritage Site
28644	9/2/033/0002-435	3 Milner Street, Graaff-Reinet	Building	Grade II	Provincial Heritage Site
28645	9/2/033/0002-436	69 Donkin Street, Graaff-Reinet	Building	Grade II	Provincial Heritage Site
28646	9/2/033/0002-437	34 Plasket Street, Graaff-Reinet	Building	Grade II	Provincial Heritage Site
28647	9/2/033/0002-438	32 Plasket Street, Graaff-Reinet	Building	Grade II	Provincial Heritage Site
28638	9/2/033/0002-439	11 Plasket Street, Graaff-Reinet	Building	Grade II	Provincial Heritage Site
28639	9/2/033/0002-440	79 Donkin Street, Graaff-Reinet	Building	Grade II	Provincial Heritage Site
28640	9/2/033/0002-441	76 Donkin Street, Graaff-Reinet	Building	Grade II	Provincial Heritage Site
28641	9/2/033/0002-442	72 Donkin Street, Graaff-Reinet	Building	Grade II	Provincial Heritage Site

28642	9/2/033/0002-443	124 Cradock Street, Graaff-Reinet	Building	Grade II	Provincial Heritage Site
28633	9/2/033/0002-444	8 Parliament Street, Graaff-Reinet	Building	Grade II	Provincial Heritage Site
28634	9/2/033/0002-464	128 Cradock Street, Graaff-Reinet	Building	Grade II	Provincial Heritage Site
28636	9/2/033/0002-520	37 Cradock Street, Graaff-Reinet	Building	Grade II	Provincial Heritage Site
28637	9/2/033/0002-521	Camdeboo Cottages, 39-47 Bourke Street, Graaff-Reinet	Building	Grade II	Provincial Heritage Site
28630	9/2/033/0002-522	9 Bourke Street, Graaff-Reinet	Building	Grade II	Provincial Heritage Site
28631	9/2/033/0002-523	138B Cradock Street, Graaff-Reinet	Building	Grade II	Provincial Heritage Site
28632	9/2/033/0002-524	24-26 Park Street, Graaff-Reinet	Building	Grade II	Provincial Heritage Site
28623	9/2/033/0002-525	104 Church Street, Graaff-Reinet	Building	Grade II	Provincial Heritage Site
28624	9/2/033/0002-526	93 Donkin Street, Graaff-Reinet	Building	Grade II	Provincial Heritage Site
28625	9/2/033/0002-527	89 Donkin Street, Graaff-Reinet	Building	Grade II	Provincial Heritage Site
28626	9/2/033/0002-528	47 Cradock Street, Graaff-Reinet	Building	Grade II	Provincial Heritage Site
28627	9/2/033/0002-529	73 Somerset Street, Graaff-Reinet	Building	Grade II	Provincial Heritage Site
28628	9/2/033/0002-530	66 Bourke Street, Graaff-Reinet	Building	Grade II	Provincial Heritage Site
28629	9/2/033/0002-531	102 Bourke Street, Graaff-Reinet	Building	Grade II	Provincial Heritage Site
28617	9/2/033/0002-532	104 Bourke Street, Graaff-Reinet	Building	Grade II	Provincial Heritage Site
28618	9/2/033/0002-533	100 Bourke Street, Graaff-Reinet	Building	Grade II	Provincial Heritage Site
28619	9/2/033/0002-534	13 Ryneveld Square, Graaff-Reinet	Building	Grade II	Provincial Heritage Site
28620	9/2/033/0002-536	Hester Rupert Art Museum, 19 Church Street, Graaff-Reinet	Building	Grade II	Provincial Heritage Site
28621	9/2/033/0002-537	76 Cradock Street, Graaff-Reinet	Building	Grade II	Provincial Heritage Site
28622	9/2/033/0002-538	119 Cradock Street, Graaff-Reinet	Building	Grade II	Provincial Heritage Site
28611	9/2/033/0002-539	117 Cradock Street, Graaff-Reinet	Building	Grade II	Provincial Heritage Site
28612	9/2/033/0002-540	109 Cradock Street, Graaff-Reinet	Building	Grade II	Provincial Heritage Site
28613	9/2/033/0002-541	107 Cradock Street, Graaff-Reinet	Building	Grade II	Provincial Heritage Site

28614	9/2/033/0002-542	104 Cradock Street, Graaff-Reinet	Building	Grade II	Provincial Heritage Site
28615	9/2/033/0002-543	100 Cradock Street, Graaff-Reinet	Building	Grade II	Provincial Heritage Site
28616	9/2/033/0002-544	96 Cradock Street, Graaff-Reinet	Building	Grade II	Provincial Heritage Site
28605	9/2/033/0002-545	44 Cradock Street, Graaff-Reinet	Building	Grade II	Provincial Heritage Site
28606	9/2/033/0002-546	80 Cradock Street, Graaff-Reinet	Building	Grade II	Provincial Heritage Site
28607	9/2/033/0002-547	45 Cradock Street, Graaff-Reinet	Building	Grade II	Provincial Heritage Site
28608	9/2/033/0002-548	75 Cradock Street, Graaff-Reinet	Building	Grade II	Provincial Heritage Site
28609	9/2/033/0002-549	74 Cradock Street, Graaff-Reinet	Building	Grade II	Provincial Heritage Site
28610	9/2/033/0002-550	2 Parsonage Street, Graaff-Reinet	Building	Grade II	Provincial Heritage Site
28599	9/2/033/0002-551	65 and 65A Cradock Street, Graaff-Reinet	Building	Grade II	Provincial Heritage Site
28600	9/2/033/0002-552	58 Cradock Street, Graaff-Reinet	Building	Grade II	Provincial Heritage Site
28601	9/2/033/0002-553	48 Cradock Street, Graaff-Reinet	Building	Grade II	Provincial Heritage Site
28602	9/2/033/0002-554	Old Powder Magazine, Graaff-Reinet	Building	Grade II	Provincial Heritage Site
28603	9/2/033/0002-555	92 Cradock Street, Graaff-Reinet	Building	Grade II	Provincial Heritage Site
28604	9/2/033/0002-557	164 Cradock Street, Graaff-Reinet	Building	Grade II	Provincial Heritage Site
28594	9/2/033/0002-558	162 Cradock Street, Graaff-Reinet	Building	Grade II	Provincial Heritage Site
28595	9/2/033/0002-559	83 Cradock Street, Graaff-Reinet	Building	Grade II	Provincial Heritage Site
28596	9/2/033/0002-563	75-77 Donkin Street, Graaff-Reinet	Building	Grade II	Provincial Heritage Site
28597	9/2/033/0002-565	85 Cradock Street, Graaff-Reinet	Building	Grade II	Provincial Heritage Site
28598	9/2/033/0002-575	Reinet House, Murray Street, Graaff-Reinet	Building	Grade II	Provincial Heritage Site
28593	9/2/033/0002-576	10 Parsonage Street, Graaff-Reinet	Building	Grade II	Provincial Heritage Site
28592	9/2/033/0002-577	Graaff-Reinet Pharmacy, 24 Caledon Street, Graaff-Reinet	Building	Grade II	Provincial Heritage Site
28586	9/2/033/0002-578	58 Bourke Street, Graaff-Reinet	Building	Grade II	Provincial Heritage Site
28587	9/2/033/0002-579	1 Te Water Street, Graaff-Reinet	Building	Grade II	Provincial Heritage Site
28588	9/2/033/0002-580	65 Stockenstroom Street, Graaff-Reinet	Building	Grade II	Provincial Heritage Site

28589	9/2/033/0002-581	63 Stockenström Street, Graaff-Reinet	Building	Grade II	Provincial Heritage Site
28590	9/2/033/0002-582	166 Cradock Street, Graaff-Reinet	Building	Grade II	Provincial Heritage Site
28591	9/2/033/0002-583	Old Congregational Church Parsonage, 21 Parsonage Street, Graaff-Reinet	Building	Grade II	Provincial Heritage Site
28581	9/2/033/0002-584	84 Cradock Street, Graaff-Reinet	Building	Grade II	Provincial Heritage Site
28582	9/2/033/0002-586	88 Caledon Street, Graaff-Reinet	Building	Grade II	Provincial Heritage Site
28583	9/2/033/0002-587	87 Caledon Street, Graaff-Reinet	Building	Grade II	Provincial Heritage Site
28584	9/2/033/0002-588	86 Caledon Street, Graaff-Reinet	Building	Grade II	Provincial Heritage Site
28585	9/2/033/0002-589	83-85 Caledon Street, Graaff-Reinet	Building	Grade II	Provincial Heritage Site
28576	9/2/033/0002-590	86 Cradock Street, Graaff-Reinet	Building	Grade II	Provincial Heritage Site
28577	9/2/033/0002-592	62 Stockenström Street, Graaff-Reinet	Building	Grade II	Provincial Heritage Site
28578	9/2/033/0004	Urquhart House, Somerset Street, Graaff-Reinet	Building	Grade II	Provincial Heritage Site
28579	9/2/033/0005	Dewdney House, 38 Caledon Street, Graaff-Reinet	Building	Grade II	Provincial Heritage Site
28580	9/2/033/0006	Old Residency, 1 Parsonage Street, Graaff-Reinet	Building	Grade II	Provincial Heritage Site
28574	9/2/033/0008	49 Murray Street, Graaff-Reinet	Building	Grade II	Provincial Heritage Site
28575	9/2/033/0009	Rietvlei, Graaff-Reinet District	Building	Grade II	Provincial Heritage Site
28569	9/2/033/0010	Graaff-Reinet Club, 3 Church Street, Graaff-Reinet	Building	Grade II	Provincial Heritage Site
28570	9/2/033/0013	Gaol, Middle Street, Graaff-Reinet	Building	Grade II	Provincial Heritage Site
28571	9/2/033/0014	136 Cradock Street, Graaff-Reinet	Building	Grade II	Provincial Heritage Site
28572	9/2/033/0015	Vrederus, 55 Somerset Street, Graaff-Reinet	Building	Grade II	Provincial Heritage Site
28564	9/2/033/0016	St James Church, 35 Somerset Street, Graaff-Reinet	Building	Grade II	Provincial Heritage Site
28565	9/2/033/0018	SA Police Academy, College Road, Graaff-Reinet	Building	Grade II	Provincial Heritage Site
28566	9/2/033/0019	16 Parliament Street, Graaff-Reinet	Building	Grade II	Provincial Heritage Site
28567	9/2/033/0020	18 Parliament Street, Graaff-Reinet	Building	Grade II	Provincial Heritage Site
28559	9/2/033/0023	Town Hall, Church Square, Graaff-Reinet	Building	Grade II	Provincial Heritage Site
28561	9/2/033/0025	Te Water House, 32 Somerset Street, Graaff-Reinet	Building	Grade II	Provincial Heritage Site

28562	9/2/033/0026	54 Bourke Street, Graaff-Reinet	Building	Grade II	Provincial Heritage Site
28563	9/2/033/0027	Kromm's Inn, 3 Parliament Street, Graaff-Reinet	Building	Grade II	Provincial Heritage Site
28554	9/2/033/0028	8 Napier Street, Graaff-Reinet	Building	Grade II	Provincial Heritage Site
28555	9/2/033/0029	80 Somerset Street, Graaff-Reinet	Building	Grade II	Provincial Heritage Site
28556	9/2/033/0030	104 Somerset Street, Graaff-Reinet	Building	Grade II	Provincial Heritage Site
28557	9/2/033/0032	60 Stockenström Street, Graaff-Reinet	Building	Grade II	Provincial Heritage Site
28558	9/2/033/0034	Reinet Museum, 18 Church Street (Corner of Church Street and Somerset Street), Graaff-Reinet	Building	Grade II	Provincial Heritage Site
28552	9/2/033/0036	Old Congregational Church, 23 Parsonage Street, Graaff-Reinet	Building	Grade II	Provincial Heritage Site
28553	9/2/033/0038	40 Cradock Street, Graaff-Reinet	Building	Grade II	Provincial Heritage Site
28548	9/2/033/0039	73 Cradock Street, Graaff-Reinet	Building	Grade II	Provincial Heritage Site
28549	9/2/033/0042	Dutch Reformed Church, Church Street, Graaff-Reinet	Building	Grade II	Provincial Heritage Site
28550	9/2/033/0043	5 Rothman Street, Graaff-Reinet	Building	Grade II	Provincial Heritage Site
28551	9/2/033/0044	95 Cradock Street, Graaff-Reinet	Building	Grade II	Provincial Heritage Site
28546	9/2/033/0050	72 Cradock Street, Graaff-Reinet	Building	Grade II	Provincial Heritage Site
28547	9/2/033/0052	Drostdy Hotel, 28-30 Church Street, Graaff-Reinet	Building	Grade II	Provincial Heritage Site
28543	9/2/033/0057	Jewish Cemetery, Donkin Street, Graaff-Reinet	Burial Grounds & Graves	Grade II	Provincial Heritage Site
27938	9/2/073/0003	49 Havelock Street, Port Elizabeth	Building	Grade II	Provincial Heritage Site
27931	9/2/073/0008/002	58 Newington Road, Port Elizabeth	Building	Grade II	Provincial Heritage Site
27923	9/2/073/0008/010	54 Newington Road, Port Elizabeth	Building	Grade II	Provincial Heritage Site
27924	9/2/073/0008/011	56 Newington Road, Port Elizabeth	Building	Grade II	Provincial Heritage Site
27874	9/2/073/0034	14 Constitution Hill, Port Elizabeth	Building	Grade II	Provincial Heritage Site
27870	9/2/073/0037	T S Lanherne, Humewood Road, Port Elizabeth	Building	Grade II	Provincial Heritage Site
27871	9/2/073/0039	Hillside House, 14 Bird Street, Port Elizabeth	Building	Grade II	Provincial Heritage Site



CEDAR TOWER
SERVICES

25059	9/2/033/058	Drostdy Hof (Stretch Court) & Historic Slave Quarters, Graaff-Reinet	Building	Grade II	Provincial Heritage Site
25992	Outbuildings, Drostdy Hotel, Graaff-Reinet	Outbuildings on Erven 3476,3477,1176 Drostdy Hotel, Church Street, Graaff-Reinet	Building		
59	9/2/003/0049	38 Somerset Street, Grahamstown	Building		Heritage Register

APPENDIX 2 - Reference List







Nid	Report Type	Author/s	Date	Title
6694	HIA	Johan Binneman	1/2/2011	A Letter Of Recommendation (with Conditions) For The Exemption Of A Full Phase 1 Archaeological Impact Assessment For The Proposed Construction Of A Four Kilometres Water Pipeline To Upgrade The Existing Infrastructure, Graaff-reinet, Camdeboo Municipality, Eastern Cape Province
119913	HIA	Helen May	17/05/2013a	Drostdy Hotel Graaff Reinet - Draft Heritage Statement for comment
122627	HIA	Helen May	18/06/2013b	Drostdy Hotel Graaff Reinet - Development Impact Assessment [Final Heritage Statement July 2013]
136231	AIA	Lita Webley, Timothy Hart, Liesbet Schietecatte	14/10/2013	Phase 2 Archaeological Impact Assessment for the proposed refurbishment and development of the historic Drostdy Hotel Graaff Reinet.
156361	HIA	Makhosazana Mngomezulu	12/2/2014a	Application For Exemption On The Proposed Construction Of Further Education Training (fet) Colleges In Graaff Reinet, Eastern Cape Province.
145867	HIA	Makhosazana Mngomezulu	14/02/2014b	Application For Exemption On The Proposed Construction Of Further Education Training (fet) College In Aliwal North, Eastern Cape Province.
325496	HIA	Robert de Jong	8/3/2015	Specialist Study: Heritage Impact Assessment For The Installation Of The Sirius Fibre Optic Cable Between Johannesburg And Yzerfontein, Gauteng, Free State, Eastern And Western Cape Provinces
8923	PIA	Bruce Rubidge	4/11/2008	Graaff Reinet Proposed General Waste Landfill Site: Palaeontological Impact Assessment
8922	PIA	John Almond	9/3/2011a	Graaff Reinet Emergency/Contingency Water Plan, Camdeboo Local Municipality, Eastern Cape Province
8915	PIA	John Almond	8/4/2011b	FibreCO Data Cable Project: Route 3 from Graaff Reinet via George and Cape Town to Yzerfontein, Western and Eastern Cape Provinces

APPENDIX 3 - Keys/Guides

Key/Guide to Acronyms

AIA	Archaeological Impact Assessment
DEA	Department of Environmental Affairs
DEDEA	Department of Economic Development, Environmental Affairs and Tourism
DMR	Department of Mineral Resources
HIA	Heritage Impact Assessment
HWC	Heritage Western Cape
MPRDA	Mineral and Petroleum Resources Development Act, no 28 of 2002
NEMA	National Environmental Management Act, no 107 of 1998
NHRA	National Heritage Resources Act, no 25 of 1999
PIA	Palaeontological Impact Assessment
SAHRA	South African Heritage Resources Agency
SAHRIS	South African Heritage Resources Information System
VIA	Visual Impact Assessment

Full guide to Palaeosensitivity Map legend

	RED:	VERY HIGH - field assessment and protocol for finds is required
	ORANGE/YELLOW:	HIGH - desktop study is required and based on the outcome of the desktop study, a field assessment is likely
	GREEN:	MODERATE - desktop study is required
	BLUE/PURPLE:	LOW - no palaeontological studies are required however a protocol for chance finds is required
	GREY:	INSIGNIFICANT/ZERO - no palaeontological studies are required
	WHITE/CLEAR:	UNKNOWN - these areas will require a minimum of a desktop study.



APPENDIX 4 - Methodology

The Heritage Screener summarises the heritage impact assessments and studies previously undertaken within the area of the proposed development and its surroundings. Heritage resources identified in these reports are assessed by our team during the screening process.

The heritage resources will be described both in terms of **type**:

- Group 1: Archaeological, Underwater, Palaeontological and Geological sites, Meteorites, and Battlefields
- Group 2: Structures, Monuments and Memorials
- Group 3: Burial Grounds and Graves, Living Heritage, Sacred and Natural sites
- Group 4: Cultural Landscapes, Conservation Areas and Scenic routes

and **significance** (Grade I, II, IIIa, b or c, ungraded), as determined by the author of the original heritage impact assessment report or by formal grading and/or protection by the heritage authorities.

Grading of heritage sites which form part of the national estate is defined in s. 7 of the National Heritage Resources Act (NHRA) as:

*(a) **Grade I:** Heritage resources with qualities so exceptional that they are of special national significance; Examples of these sites are Mapungubwe Cultural Landscape, The Parliament of South Africa, Sarah Baartman Burial Site, Robert Sobukwe's grave, Lake Fundudzi, Voortrekker Monument, Union Buildings.*

*(b) **Grade II:** Heritage resources which, although forming part of the national estate, can be considered to have special qualities which make them significant within the context of a province or a region; they are normally declared Provincial Heritage Sites under s. 27 of the NHRA after the competent Provincial Heritage Resources Authority has established their significance. Many of the current Provincial Heritage Sites were declared National Monument under the previous heritage legislation and their status was changed to Provincial Heritage Sites when the National Heritage Resources Act was proclaimed in 1999. Amongst these sites, Mapoch's Caves in Limpopo, Umhlathuzana Rock Shelter in KwaZulu Natal, Van der Stel's Copper Mine in the Northern Cape, the old Cemetery in Grahamstown, Eastern Cape and Baboon Point, in the Western Cape.*

*(c) **Grade III:** Other heritage resources worthy of conservation, and which prescribes heritage resources assessment criteria, consistent with the criteria set out in section 3(3), which must be used by a heritage resources authority or a local authority to assess the intrinsic, comparative and contextual significance of a heritage resource and the relative benefits and costs of its protection, so that the appropriate level of grading of the resource and the consequent responsibility for its management may be allocated (...).*

The following sub-categories are currently in use for Grade III::

Grade IIIa sites are sites of such a high local significance that should be protected and retained. These sites should be included in the heritage register of each province as defined in s. 30 of the NHRA and should not be impacted upon. In the instance of buildings, any alteration must be regulated. Because of their nature, all human remains are considered of high significance. While relocation of graves is common practice, this should always be considered as the last option. Examples of these sites are all graves and burial grounds which have not been graded I or II, Peers Cave in Western Cape,



Grade IIIb sites are resources of medium local significance. They should preferably be retained where possible, but where not possible the site must be fully investigated and/or mitigated. After mitigation they may be impacted upon.

Grade IIIc sites are of low local significance. These resources must be satisfactorily studied before destruction. In many instances the recording and description of the site undertaken at the heritage impact assessment level is sufficient and further recording or mitigation may not be required. These sites include for instance small knapping sites which have been sufficiently recorded at the archaeological impact assessment level, palaeontological fossils of low significance which do not require recovery. In the case of the built environment, IIIc structures will only require protection and regulation if the significance of the environs in which they are located is sufficient to warrant protective measures.

The heritage specialist in the field should suggest a grading for the site, but it will then need to be ratified and accepted by the competent heritage authority.

DETERMINATION OF THE EXTENT OF THE INCLUSION ZONE TO BE TAKEN INTO CONSIDERATION

The extent of the inclusion zone to be considered for the Heritage Screener will be determined by CTS based on:

- the size of the development,
- the number and outcome of previous surveys existing in the area
- the potential cumulative impact of the application.

The inclusion zone will be considered as the region within a maximum distance of 50 km from the boundary of the proposed development.

DETERMINATION OF THE PALAEOONTOLOGICAL SENSITIVITY

The possible impact of the proposed development on palaeontological resources is gauged by:

- reviewing the fossil sensitivity maps available on the South African Heritage Resources Information System (SAHRIS)
- considering the nature of the proposed development
- when available, taking information provided by the applicant related to the geological background of the area into account

DETERMINATION OF THE COVERAGE RATING ASCRIBED TO A REPORT POLYGON

Each report assessed for the compilation of the Heritage Screener is colour-coded according to the level of coverage accomplished. The extent of the surveyed coverage is labeled in three categories, namely low, medium and high. In most instances the extent of the map corresponds to the extent of the development for which the specific report was undertaken.

Low coverage will be used for:

- desktop studies where no field assessment of the area was undertaken;
- reports where the sites are listed and described but no GPS coordinates were provided.



- older reports with GPS coordinates with low accuracy ratings;
- reports where the entire property was mapped, but only a small/limited area was surveyed.
- uploads on the National Inventory which are not properly mapped.

Medium coverage will be used for

- reports for which a field survey was undertaken but the area was not extensively covered. This may apply to instances where some impediments did not allow for full coverage such as thick vegetation, etc.
- reports for which the entire property was mapped, but only a specific area was surveyed thoroughly. This is differentiated from low ratings listed above when these surveys cover up to around 50% of the property.

High coverage will be used for

- reports where the area highlighted in the map was extensively surveyed as shown by the GPS track coordinates. This category will also apply to permit reports.

RECOMMENDATION GUIDE

The Heritage Screener includes a set of recommendations to the applicant based on whether an impact on heritage resources is anticipated. One of three possible recommendations is formulated:

(1) The heritage resources in the area proposed for development are sufficiently recorded - The surveys undertaken in the area adequately captured the heritage resources. There are no known sites which require mitigation or management plans. No further heritage work is recommended for the proposed development.

This recommendation is made when:

- enough work has been undertaken in the area
- it is the professional opinion of CTS that the area has already been assessed adequately from a heritage perspective for the type of development proposed

(2) The heritage resources and the area proposed for development are only partially recorded - The surveys undertaken in the area have not adequately captured the heritage resources and/or there are sites which require mitigation or management plans. Further specific heritage work is recommended for the proposed development.

This recommendation is made in instances in which there are already some studies undertaken in the area and/or in the adjacent area for the proposed development. Further studies in a limited HIA may include:

- improvement on some components of the heritage assessments already undertaken, for instance with a renewed field survey and/or with a specific specialist for the type of heritage resources expected in the area
- compilation of a report for a component of a heritage impact assessment not already undertaken in the area
- undertaking mitigation measures requested in previous assessments/records of decision.



(3) The heritage resources within the area proposed for the development have not been adequately surveyed yet - Few or no surveys have been undertaken in the area proposed for development. A full Heritage Impact Assessment with a detailed field component is recommended for the proposed development.

Note:

The responsibility for generating a response detailing the requirements for the development lies with the heritage authority. However, since the methodology utilised for the compilation of the Heritage Screeners is thorough and consistent, contradictory outcomes to the recommendations made by CTS should rarely occur. Should a discrepancy arise, CTS will immediately take up the matter with the heritage authority to clarify the dispute.

The compilation of the Heritage Screener will not include any field assessment. The Heritage Screener will be submitted to the applicant within 24 hours from receipt of full payment. **If the 24-hour deadline is not met by CTS, the applicant will be refunded in full.**