



CEDAR TOWER
SERVICES

HERITAGE SCREENER

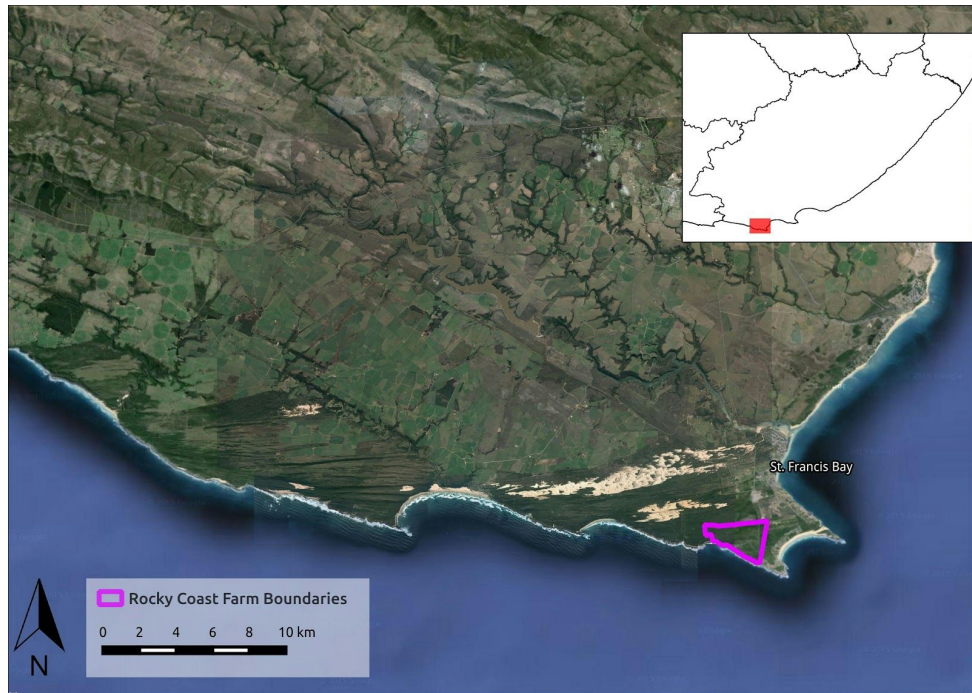
CTS Reference Number:	CTS16_015	
Client:	Public Process Consultants	
Date:	16 March 2016	
Title:	Ongegunde Vryheid (Rocky Coast Farm), Eastern Cape Province	
Recommendation by CTS Heritage Specialists:	<p>It is recommended that:</p> <ul style="list-style-type: none">- no development should take place between the High Water Mark and the calcrete ridge (roughly 200m)- a clear and approved monitoring brief must be drawn up for developments beyond the calcrete ridge up to 450m from the High Water Mark. Note that buried sites may be found during monitoring that could affect the type and scale of mitigation required.- a Palaeo Chance Find Procedure should be drawn up and included in the Environmental Management Plan for the possible presence of Middle Pleistocene to Holocene fossils.- a Conservation Management Plan should be compiled for the heritage resources within the development area where higher movement and traffic may affect the existing sites. This is applicable both to the construction and operational phase of the residential development.	

Figure 1a. Satellite image with proposed development area indicated in the Eastern Cape province.



1. Proposed Development Summary

Proposed establishment of 46 residential units with an approximate development footprint of 950 m² each.

2. Application References

Name of relevant heritage authority(s)	Eastern Cape Provincial Heritage Resources Authority (ECPHRA)
Name of decision making authority(s)	Department of Economic Development, Environmental Affairs and Tourism (DEDEAT)

3. Property Information

GPS Coordinates	S34 12 03.5 E24 48 26.42
Farm Name and Number	Portion 78 of Ongegunde Vryheid No. 746
Local Municipality	Kouga
District Municipality	Cacadu
Previous Magisterial District	Humansdorp
Province	Eastern Cape
Current Use	Vacant - recreational
Current Zoning	Agriculture 1
Total Extent	456.77 ha

4. Nature of the Proposed Development

Surface area to be affected/destroyed	Approximately 6ha
Depth of excavation (m)	NA
Height of development (m)	NA
Expected years of operation before decommission	NA

5. Category of Development

Triggers: Section 38(8) of the National Heritage Resources Act	X
Triggers: Section 38(1) of the National Heritage Resources Act	
1. Construction of a road, wall, powerline, pipeline, canal or other similar form of linear development or barrier over 300m in length.	X
2. Construction of a bridge or similar structure exceeding 50m in length.	
3. Any development or activity that will change the character of a site-	
a) exceeding 5 000m ² in extent	X
b) involving three or more existing erven or subdivisions thereof	
c) involving three or more erven or divisions thereof which have been consolidated within the past five years	
4. Rezoning of a site exceeding 10 000m ²	
5. Other (state):	

6. Additional Infrastructure Required for this Development

The development will require all additional infrastructure for water and sewerage pipelines, internal access roads and power lines
--



CEDAR TOWER
SERVICES

7. Mapping - Please see Appendices 3 and 4 for legend keys and methodology.

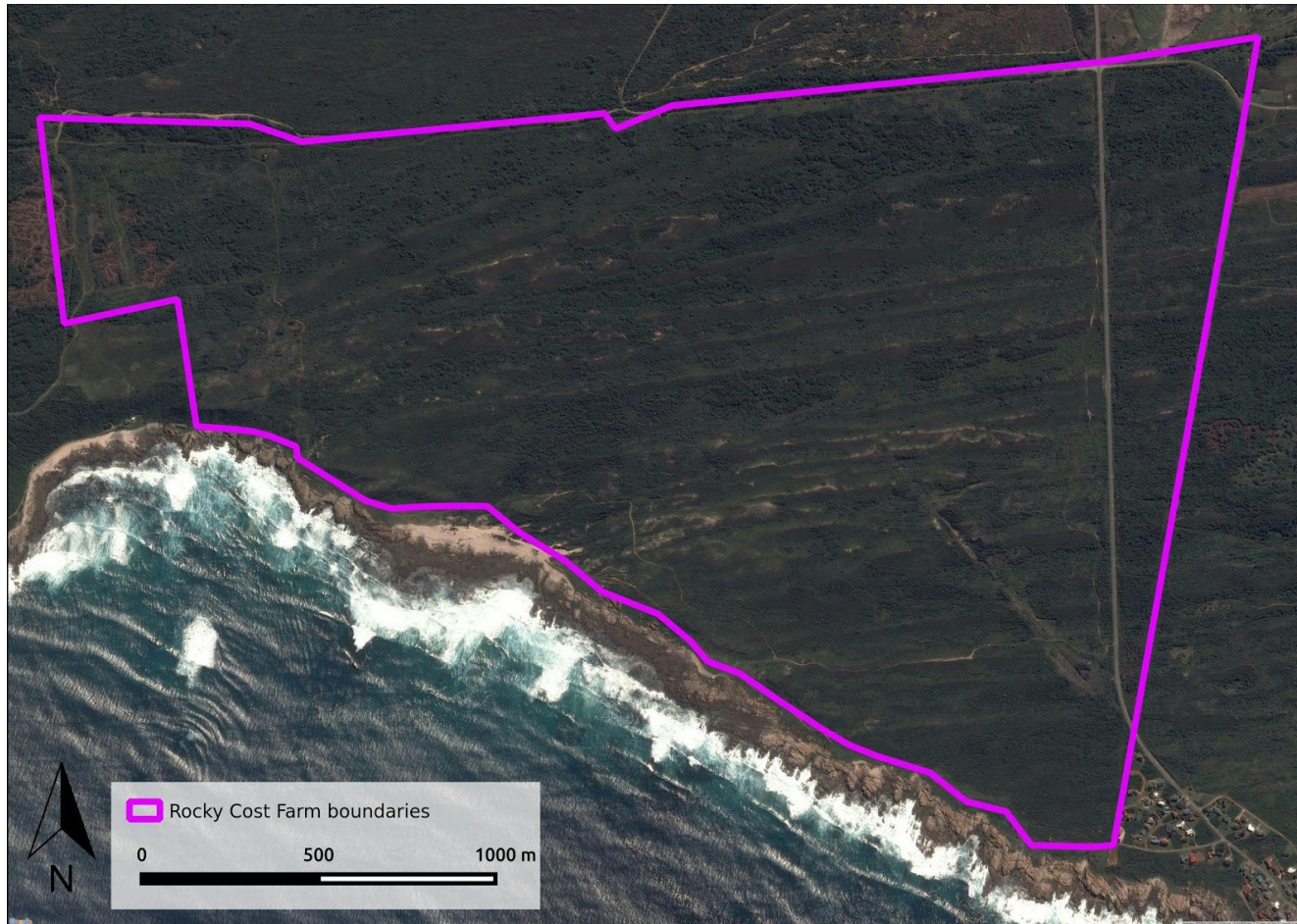


Figure 1b. Overview Map. Satellite image (2016) with proposed development indicated.



CEDAR TOWER
SERVICES

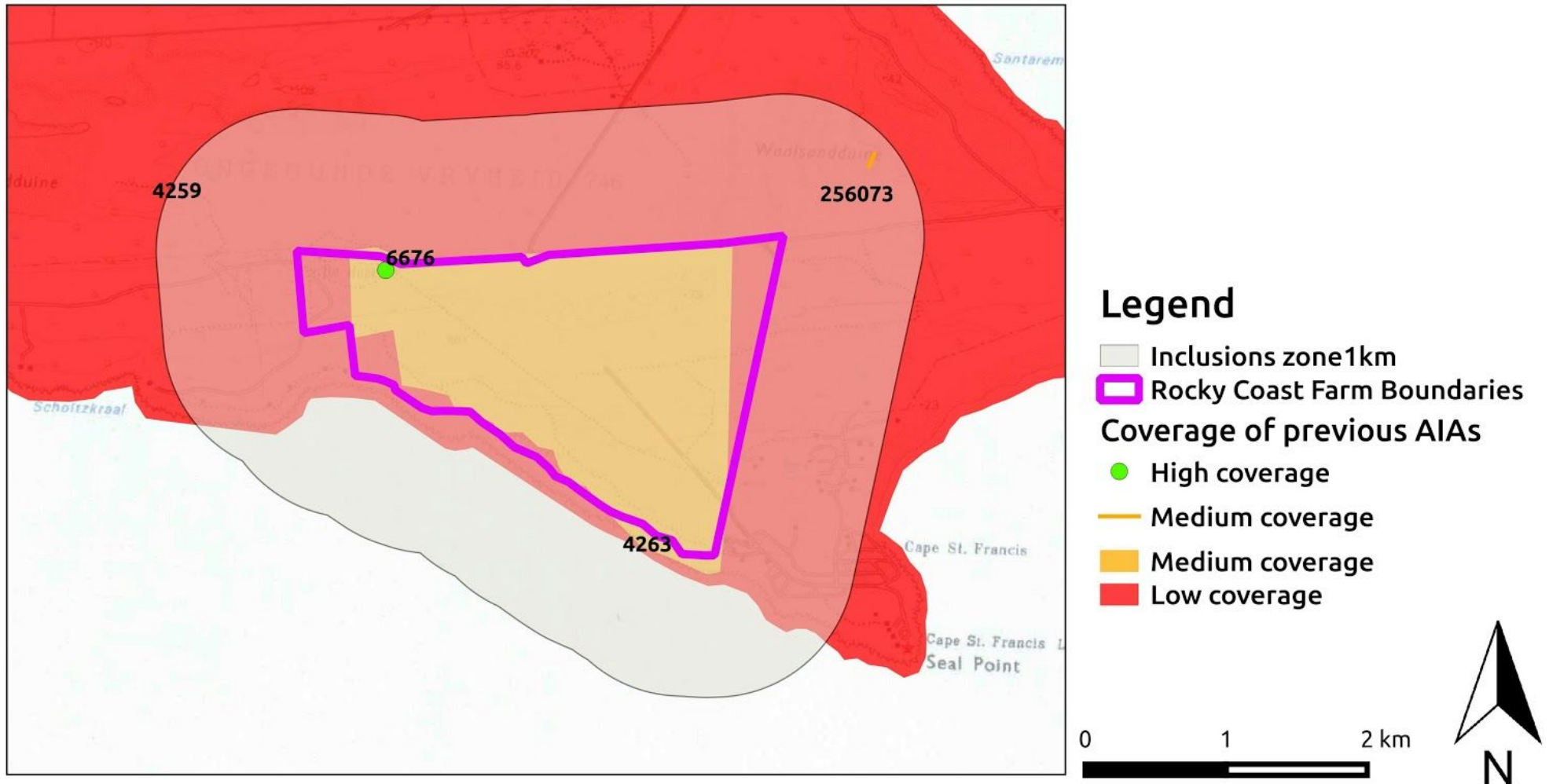
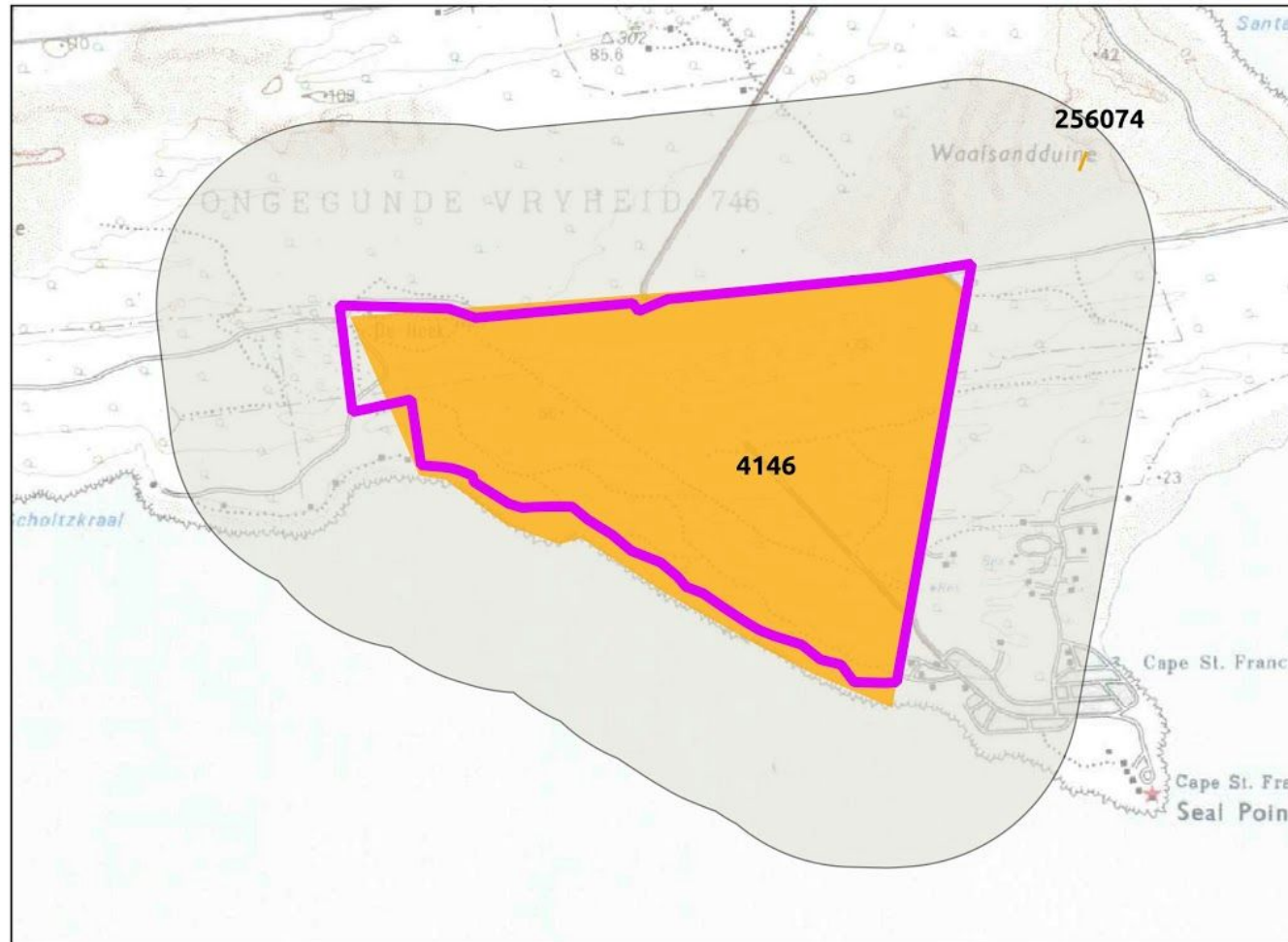


Figure 2a. HIAs Map. Previous Heritage Impact Assessments done in and near the proposed development area (PIAs excluded) with SAHRIS NID labels indicated.



CEDAR TOWER
SERVICES



Legend

- Inclusions zone1km
- Rocky Coast Farm Boundaries
- Coverage of previous PIAs
 - Medium coverage
 - Medium coverage

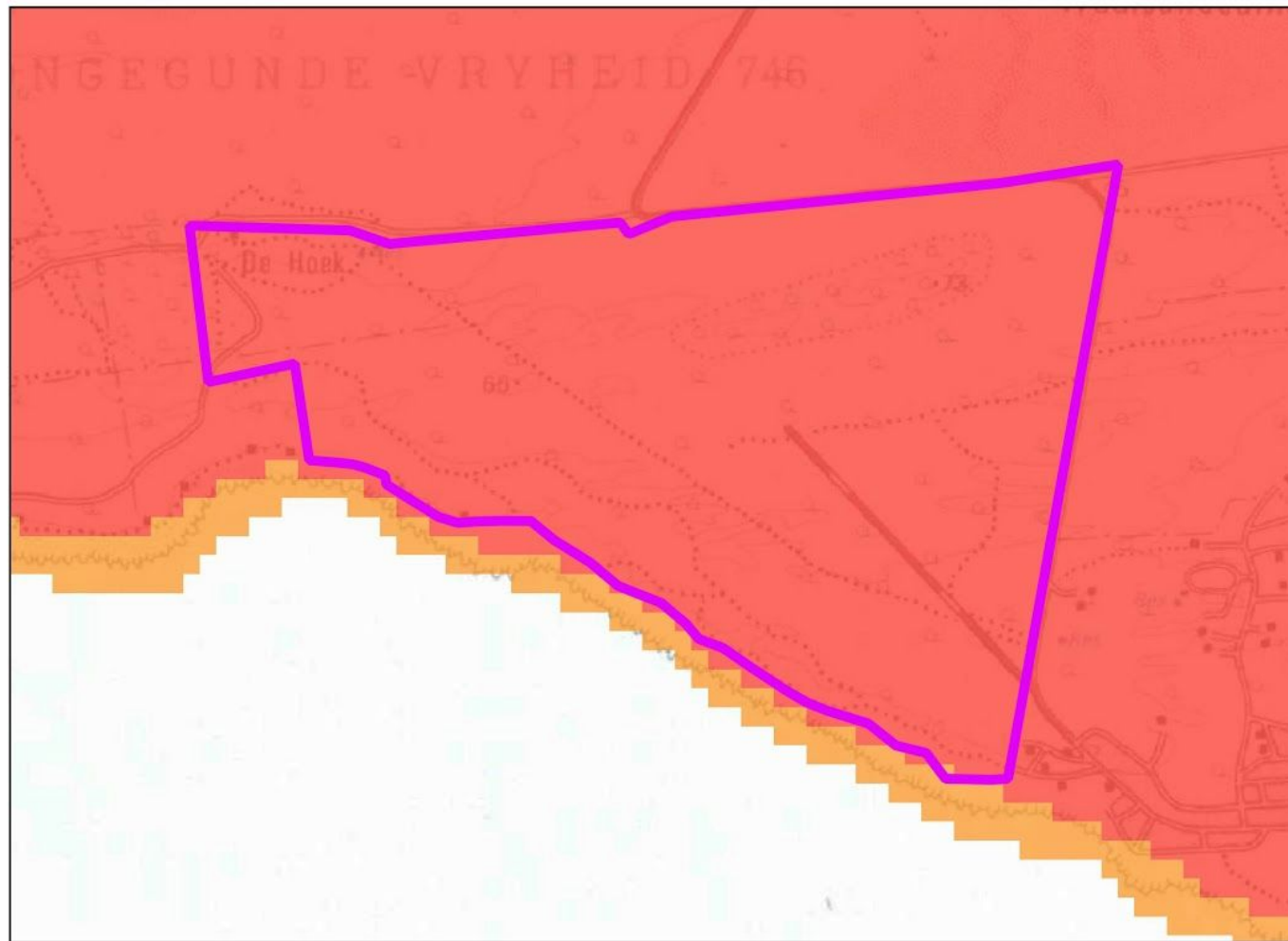
0 1 2 km



Figure 2b. PIAs Map. Previous Palaeontological Impact Assessments done in and near the proposed development area with SAHRIS NID labels indicated.



CEDAR TOWER
SERVICES



Legend

 Rocky Coast Farm Boundaries

Palaeontological sensitivity

RED Very high
ORANGE High

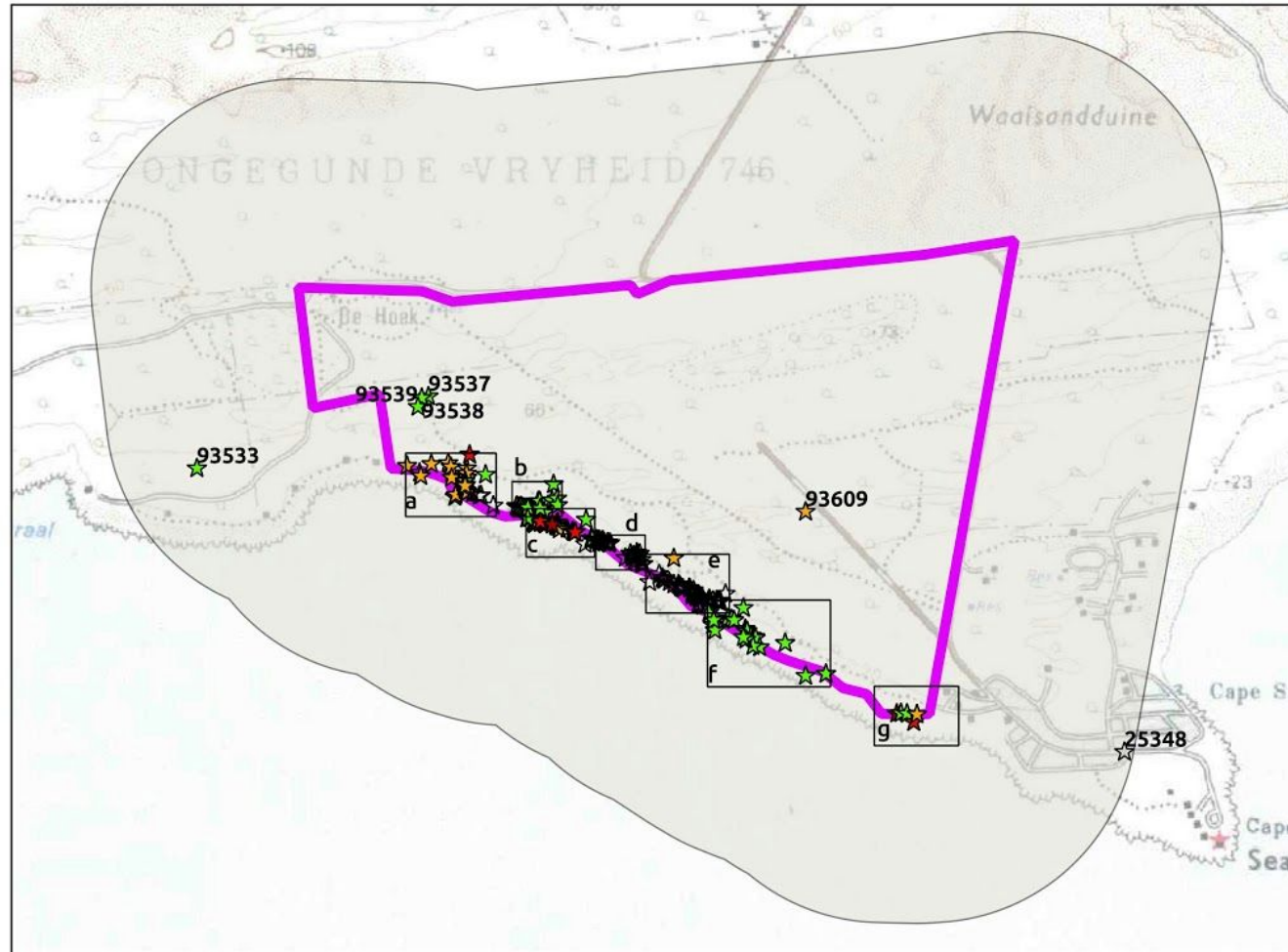


0 0.5 1 1.5 km

Figure 3. Palaeo Map. Palaeosensitivity of the study area. See Appendix 3 for full guide to the legend.



CEDAR TOWER
SERVICES



Legend

Rocky Coast Farm Boundaries

Inclusion zone 1km

Type of heritage resources

☆ Arch, Bat, Geo, Met, Pal, Und

⬠ Structures, Monuments & Memorials

□ Liv. Heritage/Sacred sites, Burial Grounds and Graves, Natural, Place

Grading

DARK RED I & II

RED IIIa

ORANGE IIIb

GREEN IIIc

CLEAR Ungraded

Figure 4.1. Heritage Resources Map. Heritage resources previously identified in and near the study area, with SAHRIS Site IDs indicated and insets which will be displayed below.



CEDAR TOWER
SERVICES

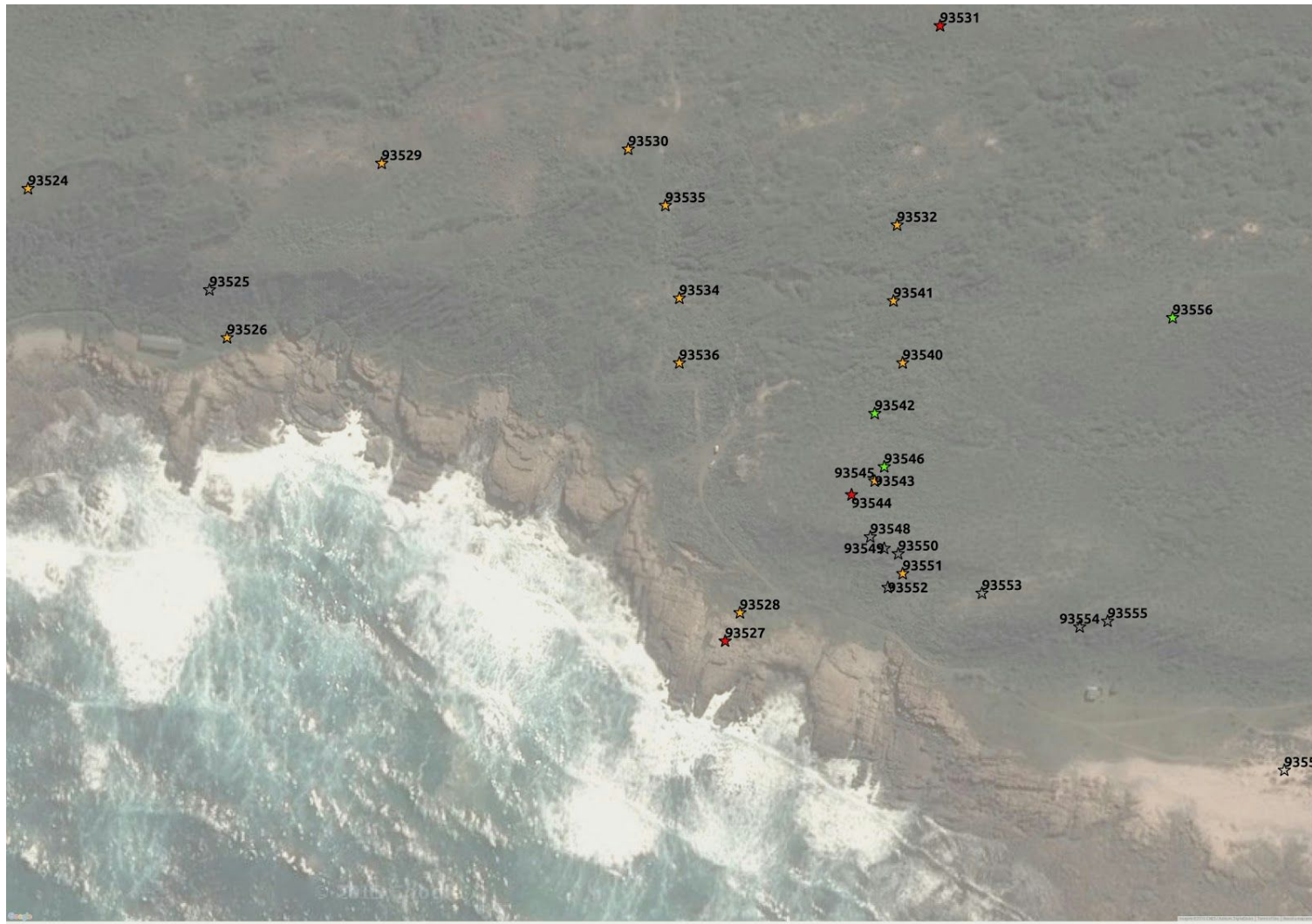


Figure 4a. Heritage Resources Map. Inset a of heritage resources previously identified in and near the study area from Figure 4, with SAHRIS Site IDs indicated.



CEDAR TOWER
SERVICES

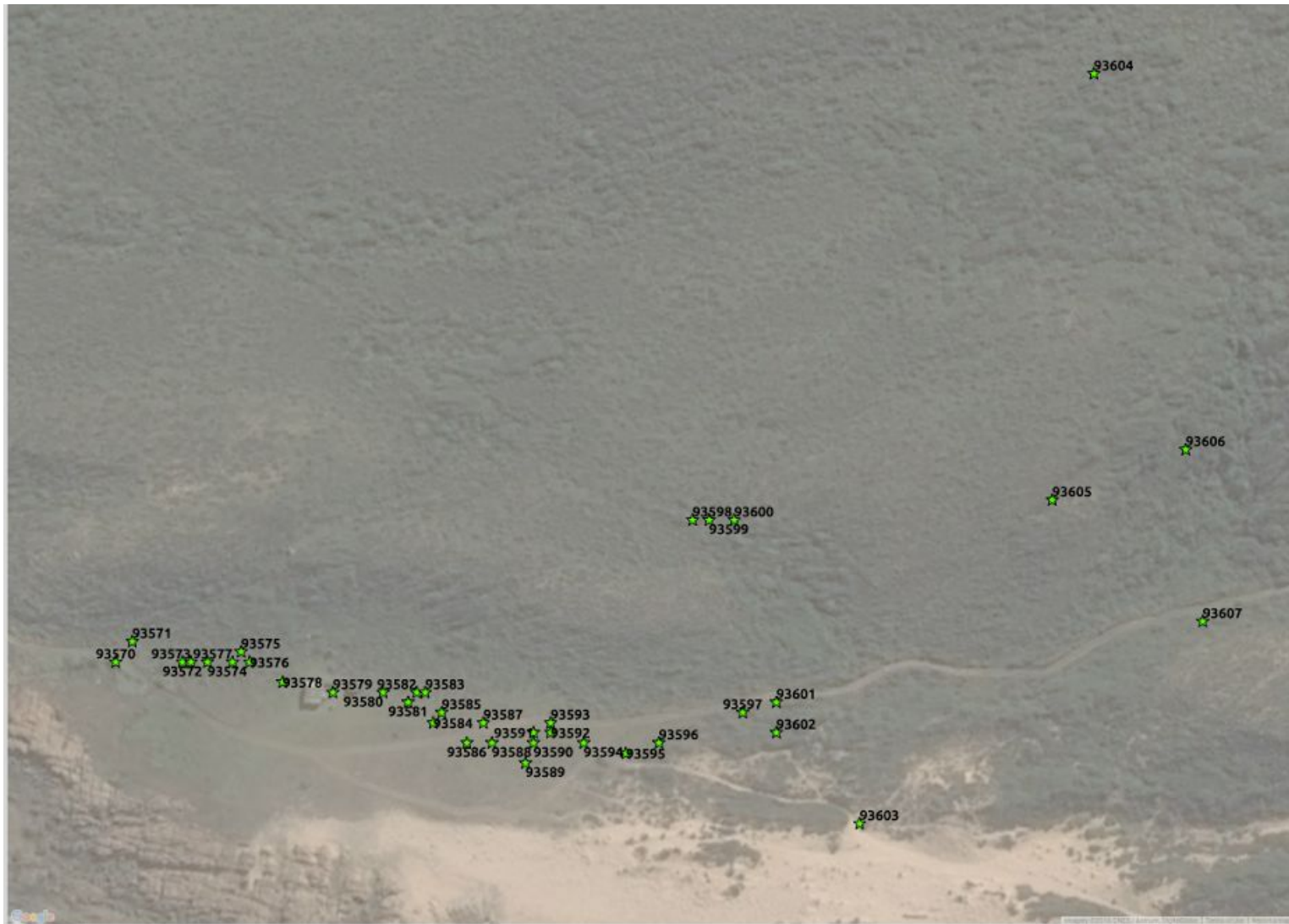


Figure 4b. Heritage Resources Map. Inset b of heritage resources previously identified in and near the study area from Figure 4, with SAHRIS Site IDs indicated.



CEDAR TOWER
SERVICES

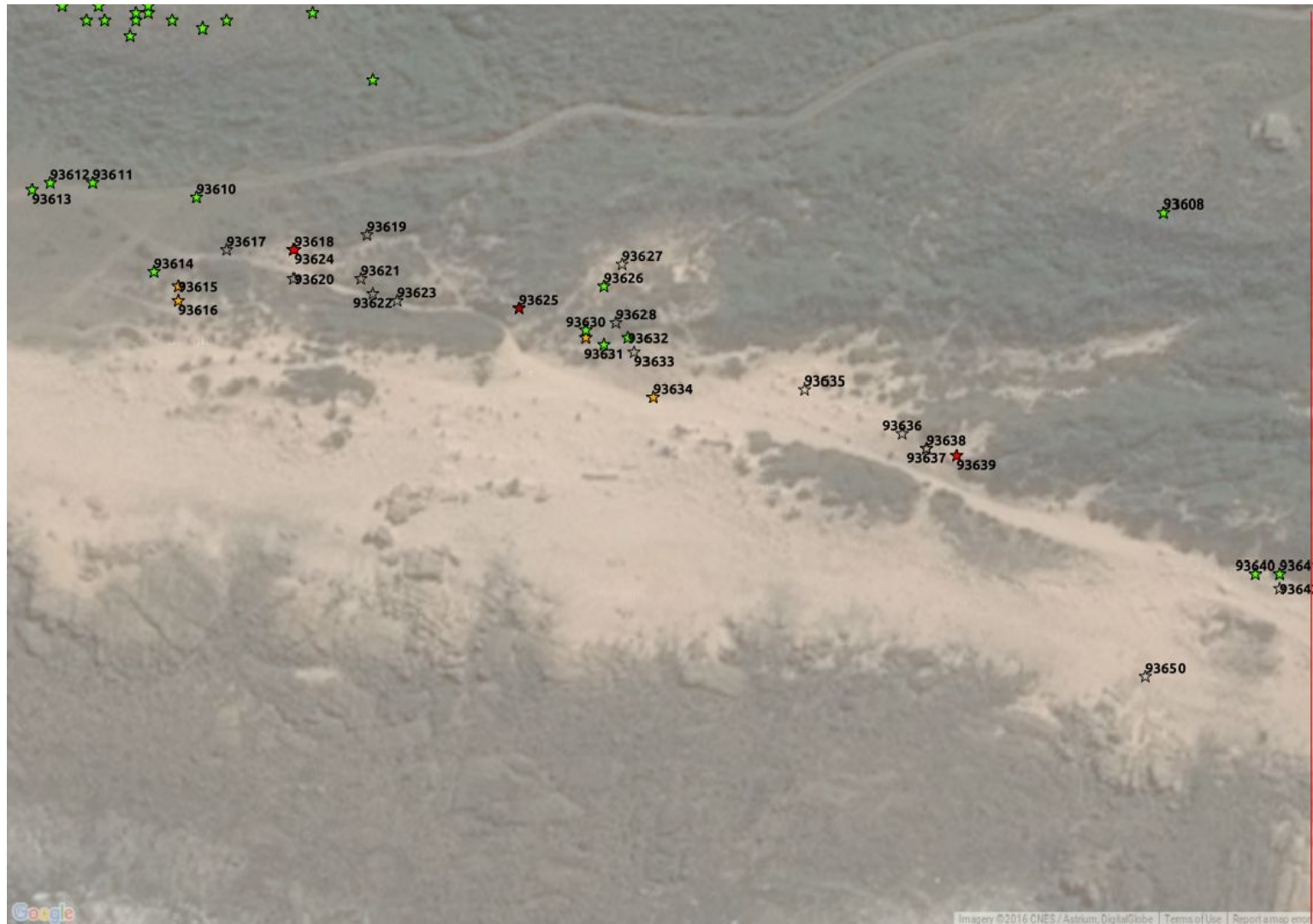


Figure 4c. Heritage Resources Map. Inset c of heritage resources previously identified in and near the study area from Figure 4, with SAHRIS Site IDs indicated.



CEDAR TOWER
SERVICES



Figure 4d. Heritage Resources Map. Inset d of heritage resources previously identified in and near the study area from Figure 4, with SAHRIS Site IDs indicated.



CEDAR TOWER
SERVICES



Figure 4e. Heritage Resources Map. Inset e of heritage resources previously identified in and near the study area from Figure 4, with SAHRIS Site IDs indicated.



CEDAR TOWER
SERVICES

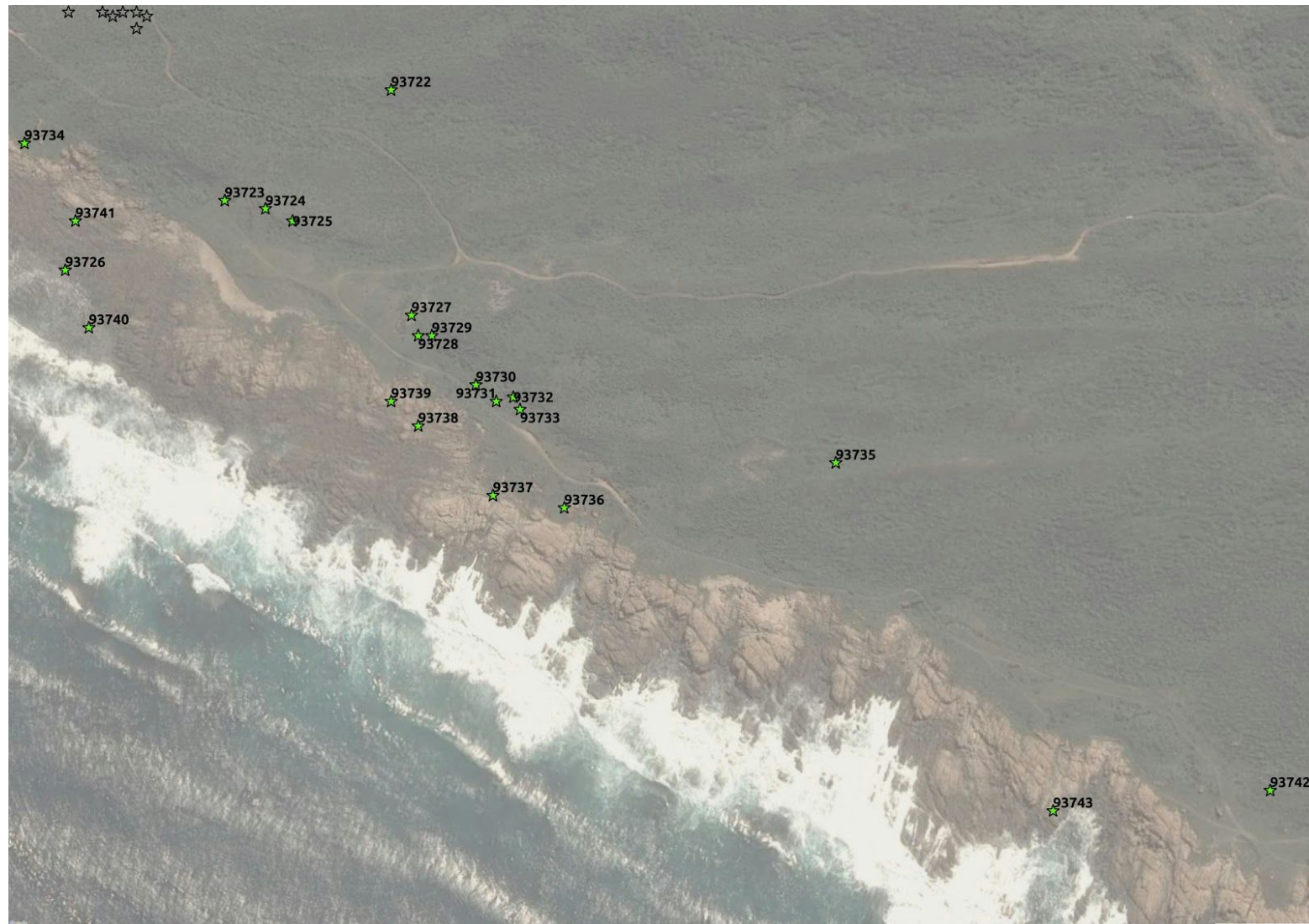


Figure 4f. Heritage Resources Map. Inset f of heritage resources previously identified in and near the study area from Figure 4, with SAHRIS Site IDs indicated.



CEDAR TOWER
SERVICES



Figure 4g. Heritage Resources Map. Inset g of heritage resources previously identified in and near the study area from Figure 4, with SAHRIS Site IDs indicated



CEDAR TOWER
SERVICES

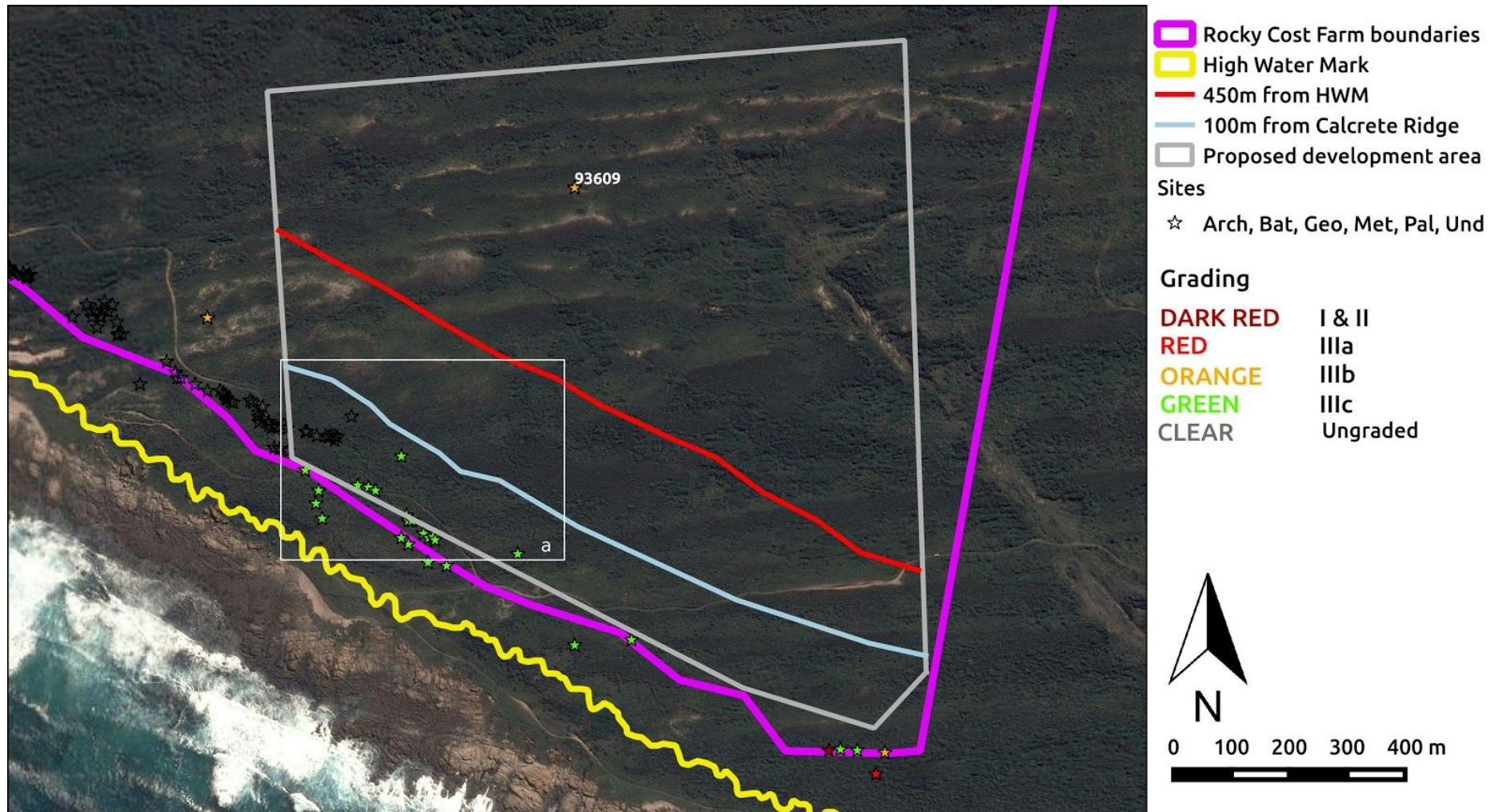


Figure 5. Area proposed for the residential development inclusive of heritage resources previously identified within it. Indicated on the map are also the High Water Mark, the area included between the HWM and 100m beyond the calcrete ridge (as defined by Binneman 2008) and the area included between the HWM and 450m from it. SAHRIS Site IDs are indicated next to the sites within the proposed development area. Inset a is displayed below.



CEDAR TOWER
SERVICES

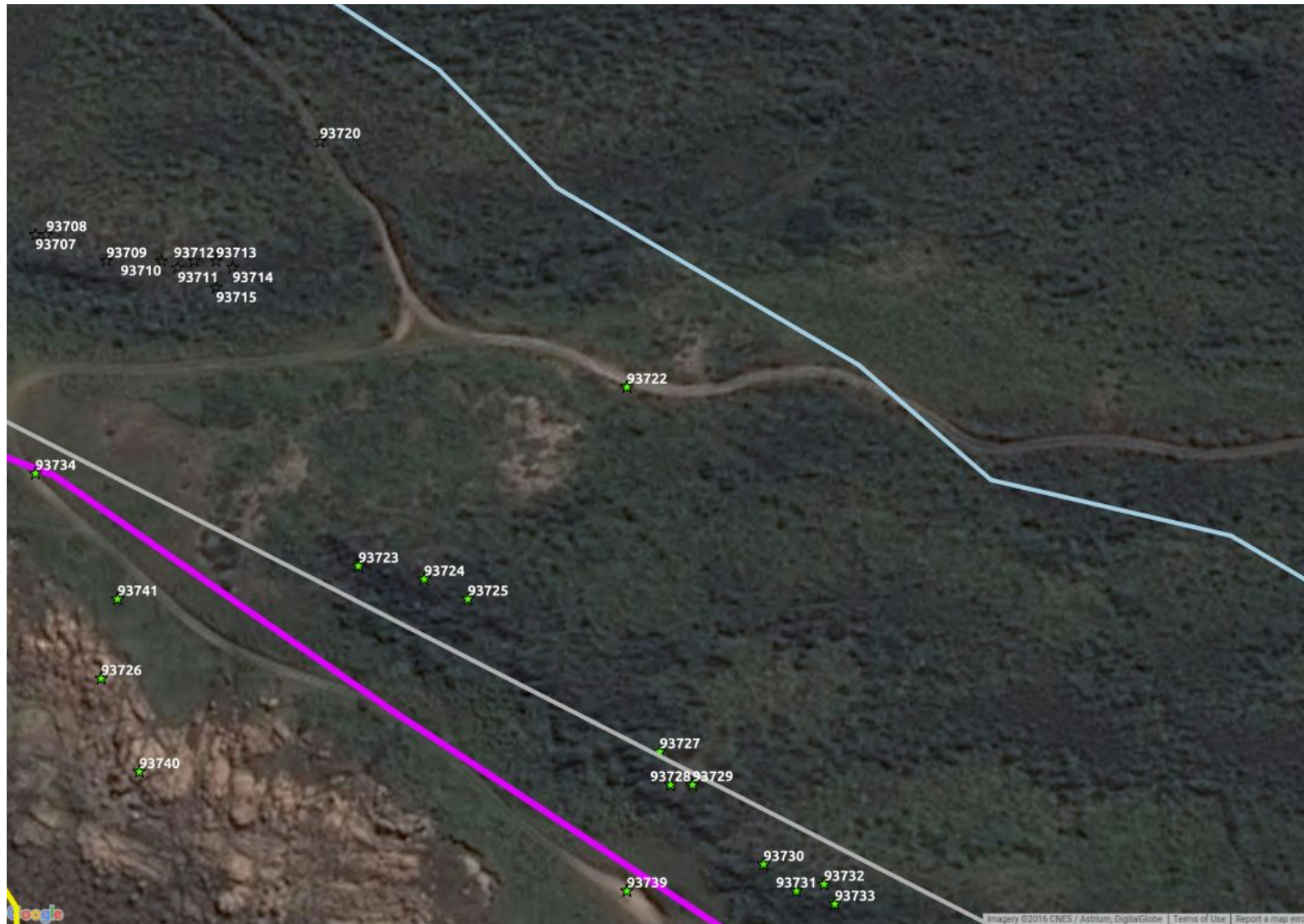


Figure 5a. Inset a of heritage resources previously identified in and near the study area from Figure 5, with SAHRIS Site IDs indicated.

8. Heritage statement and character of the area

A residential development was proposed on Rocky Coast Farm along the coastline near Cape St Francis in 2008. While the original layout included two nodes, one consisting of 21 portions of 5ha each and the second consisting of 32 erven of 910m² each, the current proposal is more limited and only includes one node with fewer units, tentatively situated in the area within the grey polygon in Figure 5. The proposed development area is located in a relatively pristine landscape on unconsolidated and semi-consolidated sand dunes of the Nanaga Formation which are covered by thick vegetation intersected by a few access roads.

SAHRA recommended that an HIA be undertaken for this project on 10th March 2008. An AIA by Dr Binneman and a desktop PIA by Dr Brink were subsequently undertaken in 2008. Binneman made 230 archaeological observations and site recordings during his survey and recommended that no development should occur between the coastline and the calcrete ridge where the densest concentration of sites were found. This would have required a setback zone of about 200m from the High Water Mark (HWM). Most of the sites identified by Binneman are Later Stone Age shell middens, shell midden scatters and stone features. In many instances it was difficult to map out the full extent of the shell middens due to the thick vegetation cover but the survey nevertheless resulted in a dense distribution of findings (see Map 4). Damage to some of the shell middens along the coastline had occurred during the establishment and use of the access roads (Galimberti, pers. observation and Binneman 2008). Binneman suggested that access to some of the roads be blocked off and limited to prevent further damage to the shell middens (Binneman 2008). He also recommended that a Conservation Management Plan be drawn up to manage the heritage resources in close proximity to the proposed development.

In terms of palaeontology there is a strong possibility that Middle Pleistocene to Holocene fossils will be identified during earthmoving activities in the Nanaga Formation. Similar fossils were accidentally discovered in the area during excavations for the Gibson Bay Wind Energy Facility which is located about 5km north west of the proposed development.

After receiving the HIA, the following recommendations and mitigatory measures were made:

- SAHRA responded to the AIA and PIA on 12th of September 2008 and recommended that the number of residential units be reduced to no more than 27 units
- SAHRA called for a setback zone of at least 450m inland from the HWM. The 450m distance was based on a general approach to predicted site densities found in other parts of the southern African coastline and was used as a cautious measure to avoid impact on the densest area of observed archaeological sites.
- SAHRA requested that monitoring by an archaeologist be conducted during all vegetation clearing and earthmoving activities. The monitoring brief had to cover both archaeology and palaeontology following the recommendations by Brink (2008).
- After the studies and responses from SAHRA in 2008, plans for the development were put on hold until 2011 when the developer requested a site visit by SAHRA.
- The recommendations following the site visit were similar to the 2008 recommendations: SAHRA maintained the requirement for the 450m setback zone from the HWM. However SAHRA added that units could be built closer to the HWM if no further significant sites were found after augering was carried out within the calcrete ridge zone 200m from the HWM.

Two other developments in the area are particularly relevant to this proposal. Previous test excavations undertaken within the extent of the Proposed Nuclear 1 precinct at Thyspunt led to the conclusion that the density of archaeological sites is significantly less beyond 500m from the HWM (Hart 2010 and 2012). However, sites can be found up to 2km or more from the



CEDAR TOWER
SERVICES

coastline as was seen during surveys for the Links Golf Estate in St Francis Bay (Nilssen 2003 and b, 2005a, b and c, 2009). The avoidance zone of 500m is therefore only a general guide before onsite surveys have taken place to establish the likelihood and distribution of sites in their local context. We therefore support Binneman's findings in 2008 which were corroborated with SAHRA's site visit in 2011 that the densest concentration of sites in this area occur between the calcrete ridge and the HWM.

In light of previous HIAs and SAHRA's recommendations prior to the handover of Section 38 functions to the ECPHRA, it is recommended that:

- **no development** should take place between the High Water Mark and 100m from the calcrete ridge (roughly 200m)
- **a clear and approved monitoring brief** must be drawn up for developments beyond 100m from the the calcrete ridge. Note that buried sites may be found during monitoring that could affect the type and scale of mitigation required. Monitoring must be conducted by an archaeologist, also bearing in mind that Quaternary fossils may be present.
- **a Palaeo Chance Find Procedure** should be drawn up and included in the Environmental Management Plan for the possible presence of Middle Pleistocene to Holocene fossils.
- **a Conservation Management Plan** should be compiled for the heritage resources within the development area where higher movement and traffic may affect the existing sites. This is applicable both to the construction and operational phase of the residential development.



CEDAR TOWER
SERVICES

APPENDIX 1 - Site Lists

List of sites within 1km inclusion zone and outside proposed development area

Site ID	Site no	Full Site Name	Site Type	Grading	Latitude	Longitude
25348	CSFB -01	Cape St Francis Bay	Deposit, Shell Midden	Ungraded	-34.208872	24.832024
39307	NUC190	Nuclear 190	Shell Midden	Grade IIIb	-34.180528	24.802028
93524	RCF001	Rocky Coast Farm 001	Archaeological	Grade IIIb	-34.1965	24.79455
93525	RCF002	Rocky Coast Farm 002	Archaeological	Ungraded	-34.1968	24.7952
93526	RCF003	Rocky Coast Farm 003	Archaeological	Grade IIIb	-34.196942	24.795263
93527	RCF004	Rocky Coast Farm 004	Archaeological	Grade IIIa	-34.197842	24.797047
93528	RCF005	Rocky Coast Farm 005	Archaeological	Grade IIIb	-34.197758	24.7971
93529	RCF006	Rocky Coast Farm 006	Archaeological	Grade IIIb	-34.196425	24.795817
93530	RCF007	Rocky Coast Farm 007	Archaeological	Grade IIIb	-34.196383	24.7967
93531	RCF008	Rocky Coast Farm 008	Archaeological	Grade IIIa	-34.196017	24.797817
93532	RCF009	Rocky Coast Farm 009	Archaeological	Grade IIIb	-34.196608	24.797663
93533	RCF010	Rocky Coast Farm 010	Archaeological	Grade IIIc	-34.196608	24.783572
93534	RCF011	Rocky Coast Farm 011	Archaeological	Grade IIIb	-34.196825	24.796883
93535	RCF012	Rocky Coast Farm 012	Archaeological	Grade IIIb	-34.19655	24.796833
93536	RCF013	Rocky Coast Farm 013	Archaeological	Grade IIIb	-34.197017	24.796883



CEDAR TOWER
SERVICES

93537	RCF014	Rocky Coast Farm 014	Archaeological	Grade IIIc	-34.1935	24.795663
93538	RCF015	Rocky Coast Farm 015	Archaeological	Grade IIIc	-34.193567	24.795313
93539	RCF016	Rocky Coast Farm 016	Archaeological	Grade IIIc	-34.19395	24.795117
93540	RCF017	Rocky Coast Farm 017	Archaeological	Grade IIIb	-34.197017	24.797683
93541	RCF018	Rocky Coast Farm 018	Archaeological	Grade IIIb	-34.196833	24.79765
93542	RCF019	Rocky Coast Farm 019	Archaeological	Grade IIIc	-34.197167	24.797583
93543	RCF020	Rocky Coast Farm 020	Archaeological	Grade IIIc	-34.197367	24.797583
93544	RCF021	Rocky Coast Farm 021	Archaeological	Grade IIIa	-34.197408	24.7975
93545	RCF022	Rocky Coast Farm 022	Archaeological	Grade IIIb	-34.197367	24.797583
93546	RCF023	Rocky Coast Farm 023	Archaeological	Grade IIIc	-34.197325	24.797617
93548	RCF026	Rocky Coast Farm 026	Archaeological	Ungraded	-34.197533	24.797567
93549	RCF027	Rocky Coast Farm 027	Archaeological	Ungraded	-34.197567	24.797617
93550	RCF028	Rocky Coast Farm 028	Archaeological	Ungraded	-34.197583	24.797667
93551	RCF029	Rocky Coast Farm 029	Archaeological	Grade IIIb	-34.197642	24.797683
93552	RCF030	Rocky Coast Farm 030	Archaeological	Ungraded	-34.197683	24.79763
93553	RCF031	Rocky Coast Farm 031	Archaeological	Ungraded	-34.1977	24.797967
93554	RCF032	Rocky Coast Farm 032	Archaeological	Ungraded	-34.1978	24.798317
93555	RCF033	Rocky Coast Farm 033	Archaeological	Ungraded	-34.197783	24.798417



CEDAR TOWER
SERVICES

93556	RCF038	Rocky Coast Farm 038	Archaeological	Grade IIIc	-34.196883	24.79865
93557	RCF039	Rocky Coast Farm 039	Archaeological	Ungraded	-34.198225	24.79905
93570	RCF052	Rocky Coast Farm 052	Archaeological	Grade IIIc	-34.198267	24.80025
93571	RCF053	Rocky Coast Farm 053	Archaeological	Grade IIIc	-34.198233	24.800283
93572	RCF054	Rocky Coast Farm 054	Archaeological	Grade IIIc	-34.198267	24.800383
93573	RCF055	Rocky Coast Farm 055	Archaeological	Grade IIIc	-34.198267	24.8004
93574	RCF056	Rocky Coast Farm 056	Archaeological	Grade IIIc	-34.198267	24.800433
93575	RCF057	Rocky Coast Farm 057	Archaeological	Grade IIIc	-34.19825	24.8005
93576	RCF058	Rocky Coast Farm 058	Archaeological	Grade IIIc	-34.198267	24.800517
93577	RCF059	Rocky Coast Farm 059	Archaeological	Grade IIIc	-34.198267	24.800483
93578	RCF060	Rocky Coast Farm 060	Archaeological	Grade IIIc	-34.1983	24.800583
93579	RCF061	Rocky Coast Farm 061	Archaeological	Grade IIIc	-34.198317	24.800683
93580	RCF062	Rocky Coast Farm 062	Archaeological	Grade IIIc	-34.198317	24.800783
93581	RCF063	Rocky Coast Farm 063	Archaeological	Grade IIIc	-34.198333	24.800833
93582	RCF064	Rocky Coast Farm 064	Archaeological	Grade IIIc	-34.198317	24.80085
93583	RCF065	Rocky Coast Farm 065	Archaeological	Grade IIIc	-34.198317	24.800867
93584	RCF066	Rocky Coast Farm 066	Archaeological	Grade IIIc	-34.198367	24.800883
93585	RCF067	Rocky Coast Farm 067	Archaeological	Grade IIIc	-34.19835	24.8009



CEDAR TOWER
SERVICES

93586	RCF068	Rocky Coast Farm 068	Archaeological	Grade IIIc	-34.1984	24.80095
93587	RCF069	Rocky Coast Farm 069	Archaeological	Grade IIIc	-34.198367	24.800983
93588	RCF070	Rocky Coast Farm 070	Archaeological	Grade IIIc	-34.1984	24.801
93589	RCF071	Rocky Coast Farm 071	Archaeological	Grade IIIc	-34.198433	24.801067
93590	RCF072	Rocky Coast Farm 072	Archaeological	Grade IIIc	-34.1984	24.801083
93591	RCF073	Rocky Coast Farm 073	Archaeological	Grade IIIc	-34.198383	24.801083
93592	RCF074	Rocky Coast Farm 074	Archaeological	Grade IIIc	-34.198383	24.801117
93593	RCF075	Rocky Coast Farm 075	Archaeological	Grade IIIc	-34.198367	24.801117
93594	RCF076	Rocky Coast Farm 076	Archaeological	Grade IIIc	-34.1984	24.801183
93595	RCF077	Rocky Coast Farm 077	Archaeological	Grade IIIc	-34.198417	24.801267
93596	RCF078	Rocky Coast Farm 078	Archaeological	Grade IIIc	-34.1984	24.801333
93597	RCF079	Rocky Coast Farm 079	Archaeological	Grade IIIc	-34.19835	24.8015
93598	RCF080	Rocky Coast Farm 080	Archaeological	Grade IIIc	-34.198033	24.8014
93599	RCF081	Rocky Coast Farm 081	Archaeological	Grade IIIc	-34.198033	24.801433
93600	RCF082	Rocky Coast Farm 082	Archaeological	Grade IIIc	-34.198033	24.801483
93601	RCF083	Rocky Coast Farm 083	Archaeological	Grade IIIc	-34.198333	24.801567
93602	RCF084	Rocky Coast Farm 084	Archaeological	Grade IIIc	-34.198383	24.801567
93603	RCF085	Rocky Coast Farm 085	Archaeological	Grade IIIc	-34.198533	24.801733



CEDAR TOWER
SERVICES

93604	RCF086	Rocky Coast Farm 086	Archaeological	Grade IIIc	-34.1973	24.8022
93605	RCF087	Rocky Coast Farm 087	Archaeological	Grade IIIc	-34.198	24.802117
93606	RCF088	Rocky Coast Farm 088	Archaeological	Grade IIIc	-34.197917	24.802383
93607	RCF089	Rocky Coast Farm 089	Archaeological	Grade IIIc	-34.1982	24.802417
93608	RCF090	Rocky Coast Farm 090	Archaeological	Grade IIIc	-34.198833	24.8039
93609	RCF091	Rocky Coast Farm 091	Archaeological	Grade IIIb	-34.198483	24.815367
93610	RCF092	Rocky Coast Farm 092	Archaeological	Grade IIIc	-34.1988	24.80125
93611	RCF093	Rocky Coast Farm 093	Archaeological	Grade IIIc	-34.198767	24.800967
93612	RCF094	Rocky Coast Farm 094	Archaeological	Grade IIIc	-34.198767	24.80085
93613	RCF095	Rocky Coast Farm 095	Archaeological	Grade IIIc	-34.198783	24.8008
93614	RCF096	Rocky Coast Farm 096	Archaeological	Grade IIIc	-34.198967	24.801133
93615	RCF097	Rocky Coast Farm 097	Archaeological	Grade IIIb	-34.199	24.8012
93616	RCF098	Rocky Coast Farm 098	Archaeological	Grade IIIb	-34.199033	24.8012
93617	RCF099	Rocky Coast Farm 099	Archaeological	Ungraded	-34.198917	24.801333
93618	RCF100	Rocky Coast Farm 100	Archaeological	Ungraded	-34.198917	24.801517
93619	RCF101	Rocky Coast Farm 101	Archaeological	Ungraded	-34.198883	24.801717
93620	RCF102	Rocky Coast Farm 102	Archaeological	Ungraded	-34.198983	24.801517
93621	RCF103	Rocky Coast Farm 103	Archaeological	Ungraded	-34.198983	24.8017



CEDAR TOWER
SERVICES

93622	RCF104	Rocky Coast Farm 104	Archaeological	Ungraded	-34.199017	24.801733
93623	RCF105	Rocky Coast Farm 105	Archaeological	Ungraded	-34.199033	24.8018
93624	RCF106	Rocky Coast Farm 106	Archaeological	Grade IIIa	-34.198917	24.801517
93625	RCF107	Rocky Coast Farm 107	Archaeological	Grade II	-34.19905	24.802133
93626	RCF108	Rocky Coast Farm 108	Archaeological	Grade IIIc	-34.199	24.802367
93627	RCF109	Rocky Coast Farm 109	Archaeological	Ungraded	-34.19895	24.802417
93628	RCF110	Rocky Coast Farm 110	Archaeological	Ungraded	-34.199083	24.8024
93629	RCF111	Rocky Coast Farm 111	Archaeological	Grade IIIb	-34.199117	24.802317
93630	RCF112	Rocky Coast Farm 112	Archaeological	Grade IIIc	-34.1991	24.802317
93631	RCF113	Rocky Coast Farm 113	Archaeological	Grade IIIc	-34.199133	24.802367
93632	RCF114	Rocky Coast Farm 114	Archaeological	Grade IIIc	-34.199117	24.802433
93633	RCF115	Rocky Coast Farm 115	Archaeological	Ungraded	-34.19915	24.80245
93634	RCF116	Rocky Coast Farm 116	Archaeological	Grade IIIb	-34.19925	24.8025
93635	RCF117	Rocky Coast Farm 117	Archaeological	Ungraded	-34.199233	24.802917
93636	RCF118	Rocky Coast Farm 118	Archaeological	Ungraded	-34.199333	24.803183
93637	RCF119	Rocky Coast Farm 119	Archaeological	Ungraded	-34.199367	24.80325
93638	RCF120	Rocky Coast Farm 120	Archaeological	Ungraded	-34.199367	24.80325
93639	RCF121	Rocky Coast Farm 121	Archaeological	Grade IIIa	-34.199383	24.803333



CEDAR TOWER
SERVICES

93640	RCF122	Rocky Coast Farm 122	Archaeological	Grade IIIc	-34.19965	24.80415
93641	RCF123	Rocky Coast Farm 123	Archaeological	Grade IIIc	-34.19965	24.804217
93642	RCF124	Rocky Coast Farm 124	Archaeological	Ungraded	-34.199683	24.804217
93643	RCF125	Rocky Coast Farm 125	Archaeological	Ungraded	-34.199683	24.804433
93644	RCF126	Rocky Coast Farm 126	Archaeological	Ungraded	-34.199733	24.8045
93645	RCF127	Rocky Coast Farm 127	Archaeological	Ungraded	-34.199733	24.80455
93646	RCF128	Rocky Coast Farm 128	Archaeological	Ungraded	-34.1997	24.80455
93647	RCF129	Rocky Coast Farm 129	Archaeological	Ungraded	-34.199717	24.8046
93648	RCF130	Rocky Coast Farm 130	Archaeological	Ungraded	-34.19975	24.804617
93649	RCF131	Rocky Coast Farm 131	Archaeological	Ungraded	-34.19985	24.804567
93650	RCF132	Rocky Coast Farm 132	Archaeological	Ungraded	-34.199883	24.80385
93651	RCF133	Rocky Coast Farm 133	Archaeological	Ungraded	-34.199717	24.804767
93652	RCF134	Rocky Coast Farm 134	Archaeological	Ungraded	-34.19975	24.804783
93653	RCF135	Rocky Coast Farm 135	Archaeological	Ungraded	-34.199783	24.8048
93654	RCF136	Rocky Coast Farm 136	Archaeological	Ungraded	-34.1998	24.804833
93655	RCF137	Rocky Coast Farm 137	Archaeological	Ungraded	-34.199833	24.804867
93656	RCF138	Rocky Coast Farm 138	Archaeological	Ungraded	-34.199817	24.805033
93657	RCF139	Rocky Coast Farm 139	Archaeological	Ungraded	-34.199867	24.805083



CEDAR TOWER
SERVICES

93658	RCF140	Rocky Coast Farm 140	Archaeological	Ungraded	-34.199883	24.8051
93659	RCF141	Rocky Coast Farm 141	Archaeological	Ungraded	-34.19985	24.805117
93660	RCF142	Rocky Coast Farm 142	Archaeological	Ungraded	-34.199833	24.80515
93661	RCF143	Rocky Coast Farm 143	Archaeological	Ungraded	-34.200483	24.80595
93662	RCF144	Rocky Coast Farm 144	Archaeological	Ungraded	-34.2003	24.806217
93663	RCF145	Rocky Coast Farm 145	Archaeological	Ungraded	-34.20025	24.80655
93664	RCF146	Rocky Coast Farm 146	Archaeological	Ungraded	-34.2003	24.8067
93665	RCF147	Rocky Coast Farm 147	Archaeological	Ungraded	-34.2004	24.8063
93666	RCF148	Rocky Coast Farm 148	Archaeological	Ungraded	-34.200383	24.806383
93667	RCF149	Rocky Coast Farm 149	Archaeological	Ungraded	-34.200383	24.806533
93668	RCF150	Rocky Coast Farm 150	Archaeological	Ungraded	-34.2004	24.806617
93670	RCF152	Rocky Coast Farm 152	Archaeological	Ungraded	-34.200483	24.806317
93671	RCF153	Rocky Coast Farm 153	Archaeological	Ungraded	-34.200483	24.806467
93672	RCF154	Rocky Coast Farm 154	Archaeological	Ungraded	-34.200483	24.806495
93673	RCF155	Rocky Coast Farm 155	Archaeological	Ungraded	-34.200567	24.806783
93674	RCF156	Rocky Coast Farm 156	Archaeological	Ungraded	-34.20065	24.806417
93675	RCF157	Rocky Coast Farm 157	Archaeological	Ungraded	-34.200767	24.8068
93676	RCF158	Rocky Coast Farm 158	Archaeological	Ungraded	-34.20075	24.806817



CEDAR TOWER
SERVICES

93677	RCF159	Rocky Coast Farm 159	Archaeological	Ungraded	-34.200767	24.8068
93678	RCF160	Rocky Coast Farm 160	Archaeological	Ungraded	-34.20075	24.806883
93679	RCF161	Rocky Coast Farm 161	Archaeological	Ungraded	-34.201183	24.807717
93680	RCF162	Rocky Coast Farm 162	Archaeological	Ungraded	-34.20135	24.807883
93681	RCF163	Rocky Coast Farm 163	Archaeological	Ungraded	-34.201433	24.807917
93682	RCF164	Rocky Coast Farm 164	Archaeological	Ungraded	-34.201433	24.807983
93683	RCF165	Rocky Coast Farm 165	Archaeological	Ungraded	-34.201533	24.807217
93684	RCF166	Rocky Coast Farm 166	Archaeological	Ungraded	-34.201533	24.80825
93685	RCF167	Rocky Coast Farm 167	Archaeological	Ungraded	-34.201633	24.808483
93686	RCF168	Rocky Coast Farm 168	Archaeological	Ungraded	-34.201633	24.808717
93687	RCF169	Rocky Coast Farm 169	Archaeological	Ungraded	-34.201667	24.808783
93688	RCF170	Rocky Coast Farm 170	Archaeological	Ungraded	-34.2017	24.8088
93689	RCF171	Rocky Coast Farm 171	Archaeological	Ungraded	-34.20175	24.808833
93690	RCF172	Rocky Coast Farm 172	Archaeological	Ungraded	-34.201767	24.80885
93691	RCF173	Rocky Coast Farm 173	Archaeological	Ungraded	-34.2018	24.808917
93692	RCF174	Rocky Coast Farm 174	Archaeological	Ungraded	-34.201817	24.808967
93693	RCF175	Rocky Coast Farm 175	Archaeological	Ungraded	-34.201783	24.809283
93694	RCF176	Rocky Coast Farm 176	Archaeological	Ungraded	-34.201817	24.809333



CEDAR TOWER
SERVICES

93695	RCF177	Rocky Coast Farm 177	Archaeological	Ungraded	-34.201883	24.809517
93696	RCF178	Rocky Coast Farm 178	Archaeological	Ungraded	-34.201967	24.809433
93697	RCF179	Rocky Coast Farm 179	Archaeological	Ungraded	-34.202033	24.809433
93698	RCF180	Rocky Coast Farm 180	Archaeological	Ungraded	-34.202117	24.80945
93699	RCF181	Rocky Coast Farm 181	Archaeological	Ungraded	-34.202067	24.809517
93700	RCF182	Rocky Coast Farm 182	Archaeological	Ungraded	-34.202117	24.809633
93701	RCF183	Rocky Coast Farm 183	Archaeological	Ungraded	-34.202167	24.809633
93702	RCF184	Rocky Coast Farm 184	Archaeological	Ungraded	-34.2022	24.809683
93703	RCF185	Rocky Coast Farm 185	Archaeological	Ungraded	-34.202183	24.809733
93704	RCF186	Rocky Coast Farm 186	Archaeological	Ungraded	-34.2022	24.8098
93705	RCF187	Rocky Coast Farm 187	Archaeological	Ungraded	-34.202167	24.809917
93706	RCF188	Rocky Coast Farm 188	Archaeological	Ungraded	-34.202217	24.809983
93707	RCF189	Rocky Coast Farm 189	Archaeological	Ungraded	-34.202267	24.810317
93708	RCF190	Rocky Coast Farm 190	Archaeological	Ungraded	-34.202267	24.81035
93709	RCF191	Rocky Coast Farm 191	Archaeological	Ungraded	-34.202333	24.810533
93710	RCF192	Rocky Coast Farm 192	Archaeological	Ungraded	-34.202333	24.8107
93711	RCF193	Rocky Coast Farm 193	Archaeological	Ungraded	-34.20235	24.81075
93712	RCF194	Rocky Coast Farm 194	Archaeological	Ungraded	-34.202333	24.8108



CEDAR TOWER
SERVICES

93713	RCF195	Rocky Coast Farm 195	Archaeological	Ungraded	-34.202333	24.810867
93714	RCF196	Rocky Coast Farm 196	Archaeological	Ungraded	-34.20235	24.810917
93715	RCF197	Rocky Coast Farm 197	Archaeological	Ungraded	-34.2024	24.810867
93716	RCF198	Rocky Coast Farm 198	Archaeological	Ungraded	-34.202567	24.81
93717	RCF199	Rocky Coast Farm 199	Archaeological	Ungraded	-34.202533	24.809833
93718	RCF200	Rocky Coast Farm 200	Archaeological	Ungraded	-34.202517	24.809733
93719	RCF201	Rocky Coast Farm 201	Archaeological	Grade IIIb	-34.2005	24.808483
93720	RCF202	Rocky Coast Farm 202	Archaeological	Ungraded	-34.202033	24.811183
93721	RCF203	Rocky Coast Farm 203	Archaeological	Grade IIIc	-34.203183	24.8
93722	RCF204	Rocky Coast Farm 204	Archaeological	Grade IIIc	-34.20265	24.812117
93723	RCF205	Rocky Coast Farm 205	Archaeological	Grade IIIc	-34.2031	24.8113
93724	RCF206	Rocky Coast Farm 206	Archaeological	Grade IIIc	-34.203133	24.8115
93725	RCF207	Rocky Coast Farm 207	Archaeological	Grade IIIc	-34.203183	24.811633
93726	RCF208	Rocky Coast Farm 208	Archaeological	Grade IIIc	-34.203383	24.810517
93727	RCF209	Rocky Coast Farm 209	Archaeological	Grade IIIc	-34.203567	24.812217
93728	RCF210	Rocky Coast Farm 210	Archaeological	Grade IIIc	-34.20365	24.81225
93729	RCF211	Rocky Coast Farm 211	Archaeological	Grade IIIc	-34.20365	24.812317
93730	RCF212	Rocky Coast Farm 212	Archaeological	Grade IIIc	-34.20385	24.812533



CEDAR TOWER
SERVICES

93731	RCF213	Rocky Coast Farm 213	Archaeological	Grade IIIc	-34.203917	24.812633
93732	RCF214	Rocky Coast Farm 214	Archaeological	Grade IIIc	-34.2039	24.812717
93733	RCF215	Rocky Coast Farm 215	Archaeological	Grade IIIc	-34.20395	24.81275
93734	RCF216	Rocky Coast Farm 216	Archaeological	Grade IIIc	-34.202867	24.810317
93735	RCF217	Rocky Coast Farm 217	Archaeological	Grade IIIc	-34.204167	24.8143
93736	RCF218	Rocky Coast Farm 218	Archaeological	Grade IIIc	-34.20435	24.812967
93737	RCF219	Rocky Coast Farm 219	Archaeological	Grade IIIc	-34.2043	24.812617
93738	RCF220	Rocky Coast Farm 220	Archaeological	Grade IIIc	-34.204017	24.81225
93739	RCF221	Rocky Coast Farm 221	Archaeological	Grade IIIc	-34.203917	24.812117
93740	RCF222	Rocky Coast Farm 222	Archaeological	Grade IIIc	-34.203617	24.810633
93741	RCF223	Rocky Coast Farm 223	Archaeological	Grade IIIc	-34.203183	24.810567
93742	RCF224	Rocky Coast Farm 224	Archaeological	Grade IIIc	-34.2055	24.816433
93743	RCF225	Rocky Coast Farm 225	Archaeological	Grade IIIc	-34.205583	24.815367
93744	RCF226	Rocky Coast Farm 226	Archaeological	Grade II	-34.207217	24.820133
93745	RCF227	Rocky Coast Farm 227	Archaeological	Grade IIIc	-34.2072	24.82035
93746	RCF228	Rocky Coast Farm 228	Archaeological	Grade IIIc	-34.207217	24.820667
93747	RCF229	Rocky Coast Farm 229	Archaeological	Grade IIIa	-34.207583	24.821017
93748	RCF230	Rocky Coast Farm 230	Archaeological	Grade IIIb	-34.20725	24.821183



CEDAR TOWER
SERVICES

APPENDIX 2 - Reference List

Nid	Author/s	Report Date	Report Title	Report Type
HIAs (excluding PIAs)				
4259	Lita Webley	18/12/2006	Phase 1 Archaeological Impact Assessment: Along the St Francis Bay Beach	AIA Phase 1
4263	Johan Binneman	01/02/2008	A Phase 1 Archaeological Heritage Impact Assessment on the Proposed Development on Portion 78 of the Farm Ongegunde Vryheid No. 746 (Rocky Coast Farm), Cape St Francis, Kouga Municipality, Humansdorp District, Eastern Cape Province	AIA Phase 1
6676	Johan Binneman	01/09/2011	A Letter Of Recommendation (WITH Conditions) For The Exemption Of A Full Phase 1 Archaeological Impact Assessment For The Proposed Drilling Of A Borehole On Portion 78 Of Ongegunde Vryheid 746, Cape St Francis, Kouga Municipality, Humansdorp District, Eastern Cape Province	AIA Exemption
256073	Johan Binneman	05/08/2014	Phase 1 Archaeological Impact Assessments Of The Proposed, Storm Water Management System And The Residential Extension For Portion 62 Of The Farm Ongegunde Vryheid No. 746, St Francis Bay, Kouga Local Municipality, Eastern Cape Province	AIA Phase 1
PIAs				
4146	James Brink	01/05/2008	A Palaeontological Desktop Study of the Area Proposed to be Developed - Part 78 of the Farm Ongegunde Vryheid 746 (Rocky Coast Farm), Cape St Francis	PIA Phase 1
256074	Robert Gess	30/07/2014	Palaeontological Impact Assessment for a Stormwater Management Plan for Portion 62 of the farm Ongegunde Vryheid No 746, St Francis Bay	Palaeontological Specialist Reports
Additional studies				
4244	Peter Nilssen	01/04/2005a	St Francis Links - Golf Estate: Phase 2 - Mitigation of Archaeological Heritage Resources, Zone 1	AIA Phase 2



CEDAR TOWER
SERVICES

4245	Peter Nilssen	04/05/2005b	St Francis Links - Golf Estate: Phase 2 - Mitigation of Archaeological Heritage Resources, Selected Sites in Zone 2	AIA Phase 2
4246	Peter Nilssen	01/06/2005c	St Francis Links - Golf Estate: Phase 2 - Mitigation of Archaeological Heritage Resources Zone 3 (Progress/Interim Report)	AIA Phase 2
7965	Peter Nilssen	06/08/2003a	Proposed St Francis Golf Estate (Heritage Impact Assessment Phase 1) Final Report	AIA Phase 1
8788	Peter Nilssen	20/08/2003b	Proposed St Francis Golf Estate Phase 2 - Mitigation of Heritage Resources Proposal for Recommended Mitigation	AIA Phase 2
8789	Peter Nilssen	06/07/2009	St Francis Links - Golf Estate. Phase 2 - Mitigation of Archaeological Heritage Resources	AIA Phase 2
194862	Tim Hart	01/10/2010	Environmental Impact Assessment for the Proposed Nuclear Power Station ("Nuclear 1") and Associated Infrastructure - Heritage Impact Assessment	HIA
	Tim Hart	01/09/2012	Environmental Impact Assessment for the Proposed Nuclear Power Station ("Nuclear 1") and Associated Infrastructure - Heritage Impact Assessment	HIA









CEDAR TOWER
SERVICES

APPENDIX 3 - Keys/Guides

Key/Guide to Acronyms

AIA	Archaeological Impact Assessment
DEA	Department of Environmental Affairs
DEDEA	Department of Economic Development, Environmental Affairs and Tourism
DMR	Department of Mineral Resources
HIA	Heritage Impact Assessment
HWC	Heritage Western Cape
MPRDA	Mineral and Petroleum Resources Development Act, no 28 of 2002
NEMA	National Environmental Management Act, no 107 of 1998
NHRA	National Heritage Resources Act, no 25 of 1999
PIA	Palaeontological Impact Assessment
SAHRA	South African Heritage Resources Agency
SAHRIS	South African Heritage Resources Information System
VIA	Visual Impact Assessment

Full guide to Palaeosensitivity Map legend

	RED:	VERY HIGH - field assessment and protocol for finds is required
	ORANGE/YELLOW:	HIGH - desktop study is required and based on the outcome of the desktop study, a field assessment is likely
	GREEN:	MODERATE - desktop study is required
	BLUE/PURPLE:	LOW - no palaeontological studies are required however a protocol for chance finds is required
	GREY:	INSIGNIFICANT/ZERO - no palaeontological studies are required
	WHITE/CLEAR:	UNKNOWN - these areas will require a minimum of a desktop study.



APPENDIX 4 - Methodology

The Heritage Screener summarises the heritage impact assessments and studies previously undertaken within the area of the proposed development and its surroundings. Heritage resources identified in these reports are assessed by our team during the screening process.

The heritage resources will be described both in terms of **type**:

- Group 1: Archaeological, Underwater, Palaeontological and Geological sites, Meteorites, and Battlefields
- Group 2: Structures, Monuments and Memorials
- Group 3: Burial Grounds and Graves, Living Heritage, Sacred and Natural sites
- Group 4: Cultural Landscapes, Conservation Areas and Scenic routes

and **significance** (Grade I, II, IIIa, b or c, ungraded), as determined by the author of the original heritage impact assessment report or by formal grading and/or protection by the heritage authorities.

Grading of heritage sites which form part of the national estate is defined in s. 7 of the National Heritage Resources Act (NHRA) as:

*(a) **Grade I:** Heritage resources with qualities so exceptional that they are of special national significance; Examples of these sites are Mapungubwe Cultural Landscape, The Parliament of South Africa, Sarah Baartman Burial Site, Robert Sobukwe's grave, Lake Fundudzi, Voortrekker Monument, Union Buildings.*

*(b) **Grade II:** Heritage resources which, although forming part of the national estate, can be considered to have special qualities which make them significant within the context of a province or a region; they are normally declared Provincial Heritage Sites under s. 27 of the NHRA after the competent Provincial Heritage Resources Authority has established their significance. Many of the current Provincial Heritage Sites were declared National Monument under the previous heritage legislation and their status was changed to Provincial Heritage Sites when the National Heritage Resources Act was proclaimed in 1999. Amongst these sites, Mapoch's Caves in Limpopo, Umhlatuzana Rock Shelter in KwaZulu Natal, Van der Stel's Copper Mine in the Northern Cape, the old Cemetery in Grahamstown, Eastern Cape and Baboon Point, in the Western Cape.*

*(c) **Grade III:** Other heritage resources worthy of conservation, and which prescribes heritage resources assessment criteria, consistent with the criteria set out in section 3(3), which must be used by a heritage resources authority or a local authority to assess the intrinsic, comparative and contextual significance of a heritage resource and the relative benefits and costs of its protection, so that the appropriate level of grading of the resource and the consequent responsibility for its management may be allocated (...).*

The following sub-categories are currently in use for Grade III::

Grade IIIa sites are sites of such a high local significance that should be protected and retained. These sites should be included in the heritage register of each province as defined in s. 30 of the NHRA and should not be impacted upon. In the instance of buildings, any alteration must be regulated. Because of their nature, all human remains are considered of high significance. While relocation of graves is common practice, this should always be considered as the last option. Examples of these sites are all graves and burial grounds which have not been graded I or II, Peers Cave in Western Cape,



Grade IIIb sites are resources of medium local significance. They should preferably be retained where possible, but where not possible the site must be fully investigated and/or mitigated. After mitigation they may be impacted upon.

Grade IIIc sites are of low local significance. These resources must be satisfactorily studied before destruction. In many instances the recording and description of the site undertaken at the heritage impact assessment level is sufficient and further recording or mitigation may not be required. These sites include for instance small knapping sites which have been sufficiently recorded at the archaeological impact assessment level, palaeontological fossils of low significance which do not require recovery. In the case of the built environment, IIIc structures will only require protection and regulation if the significance of the environs in which they are located is sufficient to warrant protective measures.

The heritage specialist in the field should suggest a grading for the site, but it will then need to be ratified and accepted by the competent heritage authority.

DETERMINATION OF THE EXTENT OF THE INCLUSION ZONE TO BE TAKEN INTO CONSIDERATION

The extent of the inclusion zone to be considered for the Heritage Screener will be determined by CTS based on:

- the size of the development,
- the number and outcome of previous surveys existing in the area
- the potential cumulative impact of the application.

The inclusion zone will be considered as the region within a maximum distance of 50 km from the boundary of the proposed development.

DETERMINATION OF THE PALAEOONTOLOGICAL SENSITIVITY

The possible impact of the proposed development on palaeontological resources is gauged by:

- reviewing the fossil sensitivity maps available on the South African Heritage Resources Information System (SAHRIS)
- considering the nature of the proposed development
- when available, taking information provided by the applicant related to the geological background of the area into account

DETERMINATION OF THE COVERAGE RATING ASCRIBED TO A REPORT POLYGON

Each report assessed for the compilation of the Heritage Screener is colour-coded according to the level of coverage accomplished. The extent of the surveyed coverage is labeled in three categories, namely low, medium and high. In most instances the extent of the map corresponds to the extent of the development for which the specific report was undertaken.

Low coverage will be used for:

- desktop studies where no field assessment of the area was undertaken;
- reports where the sites are listed and described but no GPS coordinates were provided.



- older reports with GPS coordinates with low accuracy ratings;
- reports where the entire property was mapped, but only a small/limited area was surveyed.
- uploads on the National Inventory which are not properly mapped.

Medium coverage will be used for

- reports for which a field survey was undertaken but the area was not extensively covered. This may apply to instances where some impediments did not allow for full coverage such as thick vegetation, etc.
- reports for which the entire property was mapped, but only a specific area was surveyed thoroughly. This is differentiated from low ratings listed above when these surveys cover up to around 50% of the property.

High coverage will be used for

- reports where the area highlighted in the map was extensively surveyed as shown by the GPS track coordinates. This category will also apply to permit reports.

RECOMMENDATION GUIDE

The Heritage Screener includes a set of recommendations to the applicant based on whether an impact on heritage resources is anticipated. One of three possible recommendations is formulated:

(1) The heritage resources in the area proposed for development are sufficiently recorded - The surveys undertaken in the area adequately captured the heritage resources. There are no known sites which require mitigation or management plans. No further heritage work is recommended for the proposed development.

This recommendation is made when:

- enough work has been undertaken in the area
- it is the professional opinion of CTS that the area has already been assessed adequately from a heritage perspective for the type of development proposed

(2) The heritage resources and the area proposed for development are only partially recorded - The surveys undertaken in the area have not adequately captured the heritage resources and/or there are sites which require mitigation or management plans. Further specific heritage work is recommended for the proposed development.

This recommendation is made in instances in which there are already some studies undertaken in the area and/or in the adjacent area for the proposed development. Further studies in a limited HIA may include:

- improvement on some components of the heritage assessments already undertaken, for instance with a renewed field survey and/or with a specific specialist for the type of heritage resources expected in the area
- compilation of a report for a component of a heritage impact assessment not already undertaken in the area
- undertaking mitigation measures requested in previous assessments/records of decision.



CEDAR TOWER
SERVICES

(3) The heritage resources within the area proposed for the development have not been adequately surveyed yet - Few or no surveys have been undertaken in the area proposed for development. A full Heritage Impact Assessment with a detailed field component is recommended for the proposed development.

Note:

The responsibility for generating a response detailing the requirements for the development lies with the heritage authority. However, since the methodology utilised for the compilation of the Heritage Screeners is thorough and consistent, contradictory outcomes to the recommendations made by CTS should rarely occur. Should a discrepancy arise, CTS will immediately take up the matter with the heritage authority to clarify the dispute.

The compilation of the Heritage Screener will not include any field assessment. The Heritage Screener will be submitted to the applicant within 24 hours from receipt of full payment. **If the 24-hour deadline is not met by CTS, the applicant will be refunded in full.**