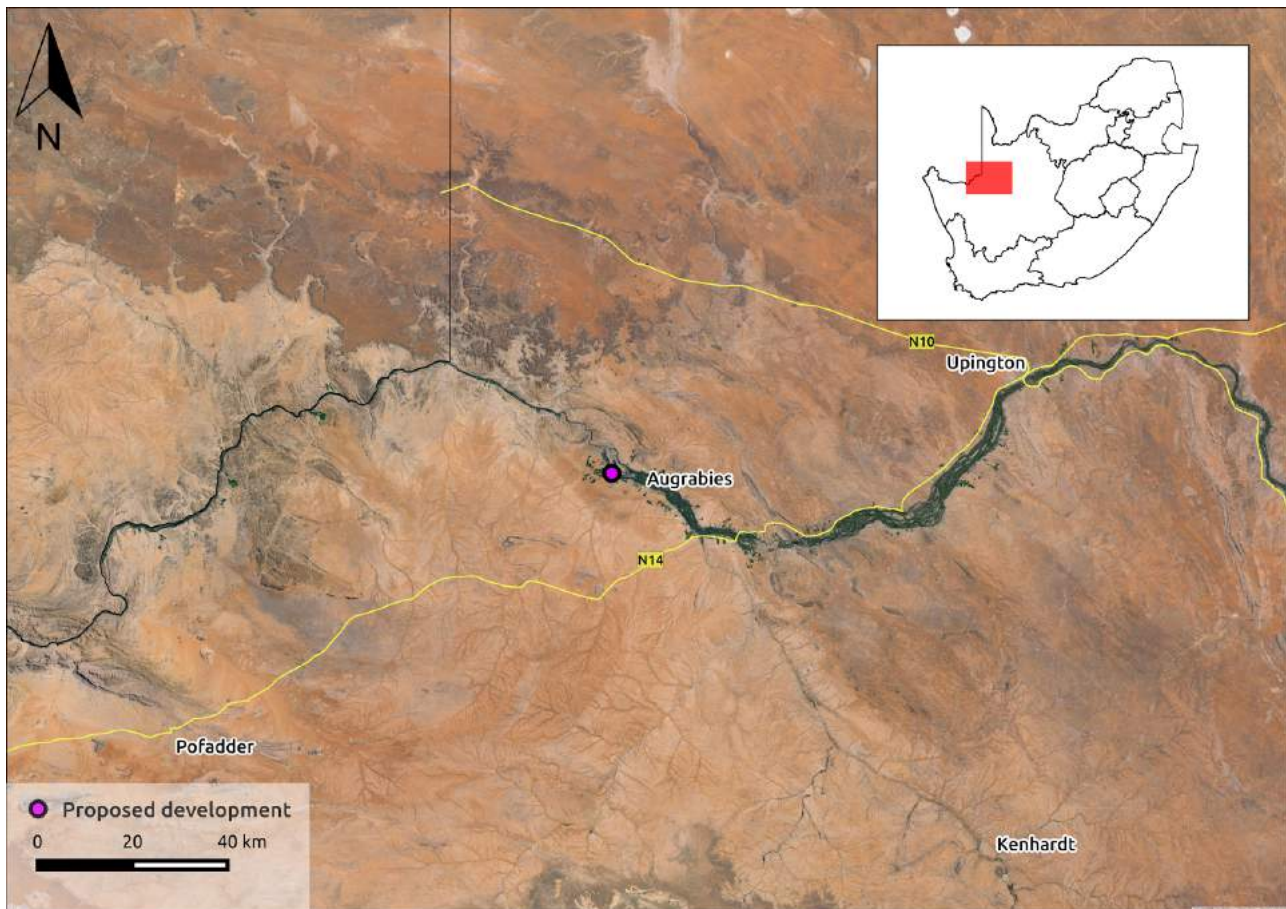


## HERITAGE SCREENER

CTS Reference Number:	CTS16_023	
Client:	EnviroAfrica	
Date:	10 May 2016	
Title:	Fuel filling station & convenience store, Augrabies, Northern Cape	
Recommendation by CTS Heritage Specialists: (Type 1)	<p>(1) The heritage resources in the area proposed for development are sufficiently recorded. - It is recommended that:</p> <ul style="list-style-type: none"><li>- No further archaeological assessment be conducted</li><li>- No further palaeontological assessment be conducted.</li></ul>	



## 1. Proposed Development Summary

It is proposed that a fuel filling station be constructed on Portion 42 of Farm Orange Fall No. 16, Augrabies. Fuel storage tanks with a volume not exceeding 500 cubic meters (500 000l) will be constructed. The filling station will also provide retail space, including space for a convenience store. The site is located off the R359.

## 2. Application References

<b>Name of relevant heritage authority(s)</b>	South African Heritage Resources Agency (SAHRA)
<b>Name of decision making authority(s)</b>	Department of Environment and Nature Conservation (DENC)

## 3. Property Information

<b>GPS Coordinates</b>	28°38'22.30"S, 20°21'00.77"E
<b>Farm Name/Number</b>	Portion 42 of Farm Orange Fall No. 16
<b>Local Municipality</b>	Kai! Garib Municipality
<b>District Municipality</b>	Siyanda
<b>Previous Magisterial District</b>	Gordonia
<b>Province</b>	Northern Cape
<b>Current Use</b>	Commercial Agriculture
<b>Current Zoning</b>	Agricultural
<b>Total Extent</b>	11 000m <sup>2</sup>

#### 4. Nature of the Proposed Development

Surface area to be affected/destroyed	11 000m <sup>2</sup>
Depth of excavation (m)	Unknown
Height of development (m)	Approximately 6.6 m (2 storeys)
Expected years of operation before decommission	NA

#### 5. Category of Development

Triggers: Section 38(8) of the National Heritage Resources Act	X
Triggers: Section 38(1) of the National Heritage Resources Act	
1. Construction of a road, wall, powerline, pipeline, canal or other similar form of linear development or barrier over 300m in length.	
2. Construction of a bridge or similar structure exceeding 50m in length.	
3. Any development or activity that will change the character of a site-	
a) exceeding 5 000m <sup>2</sup> in extent	X
b) involving three or more existing erven or subdivisions thereof	
c) involving three or more erven or divisions thereof which have been consolidated within the past five years	
4. Rezoning of a site exceeding 10 000m <sup>2</sup>	X
5. Other (state):	

#### 6. Additional Infrastructure Required for this Development

<ul style="list-style-type: none"> <li>fuel storage tanks with a volume not exceeding 500 cubic meters (500 000l)</li> <li>retail space, including a convenience store</li> </ul>
---

## 7. Mapping - Please see Appendices 3 and 4 for legend keys and methodology.

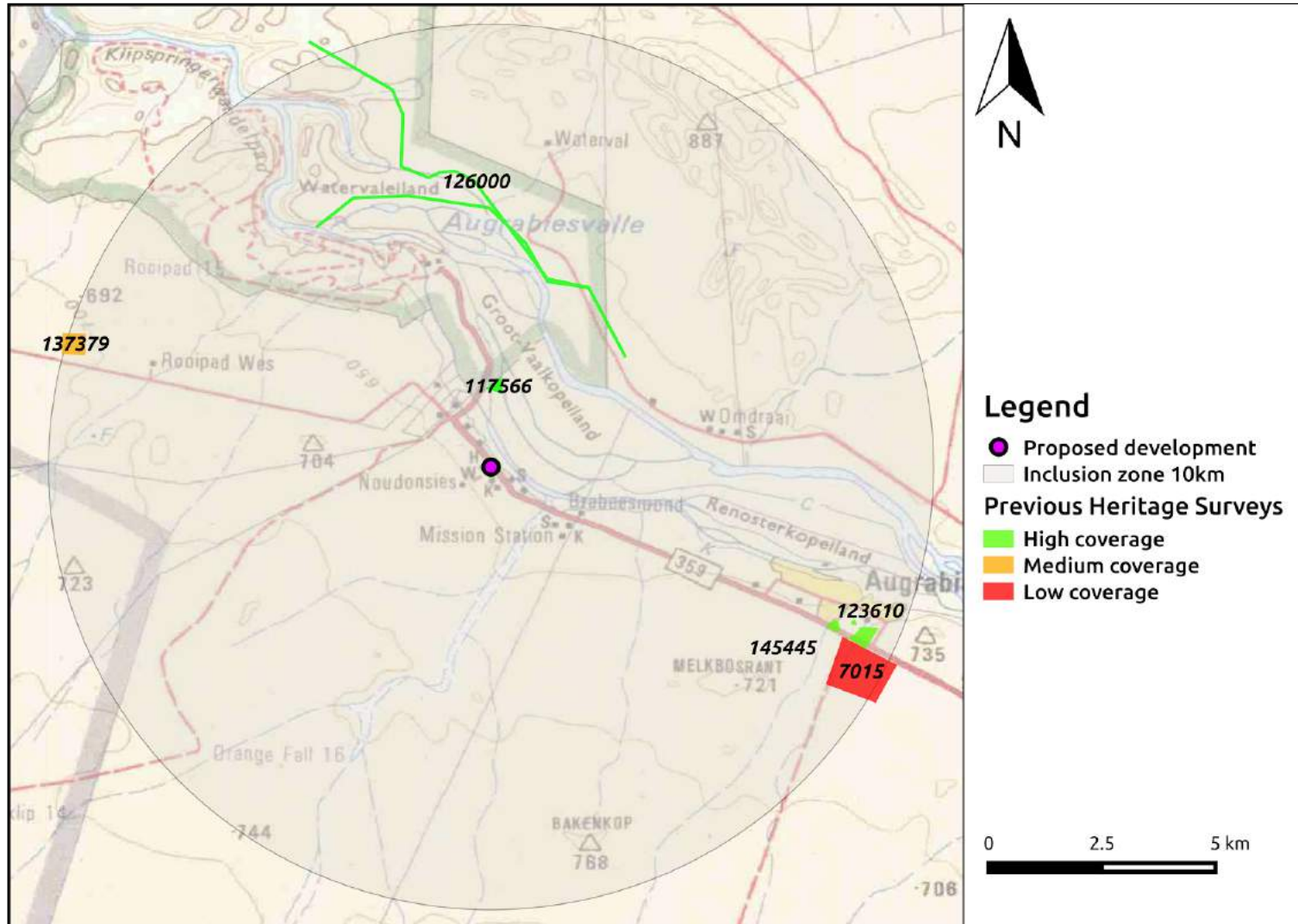


**Figure 1b. Overview Map.** Satellite image (2016) with proposed development indicated.





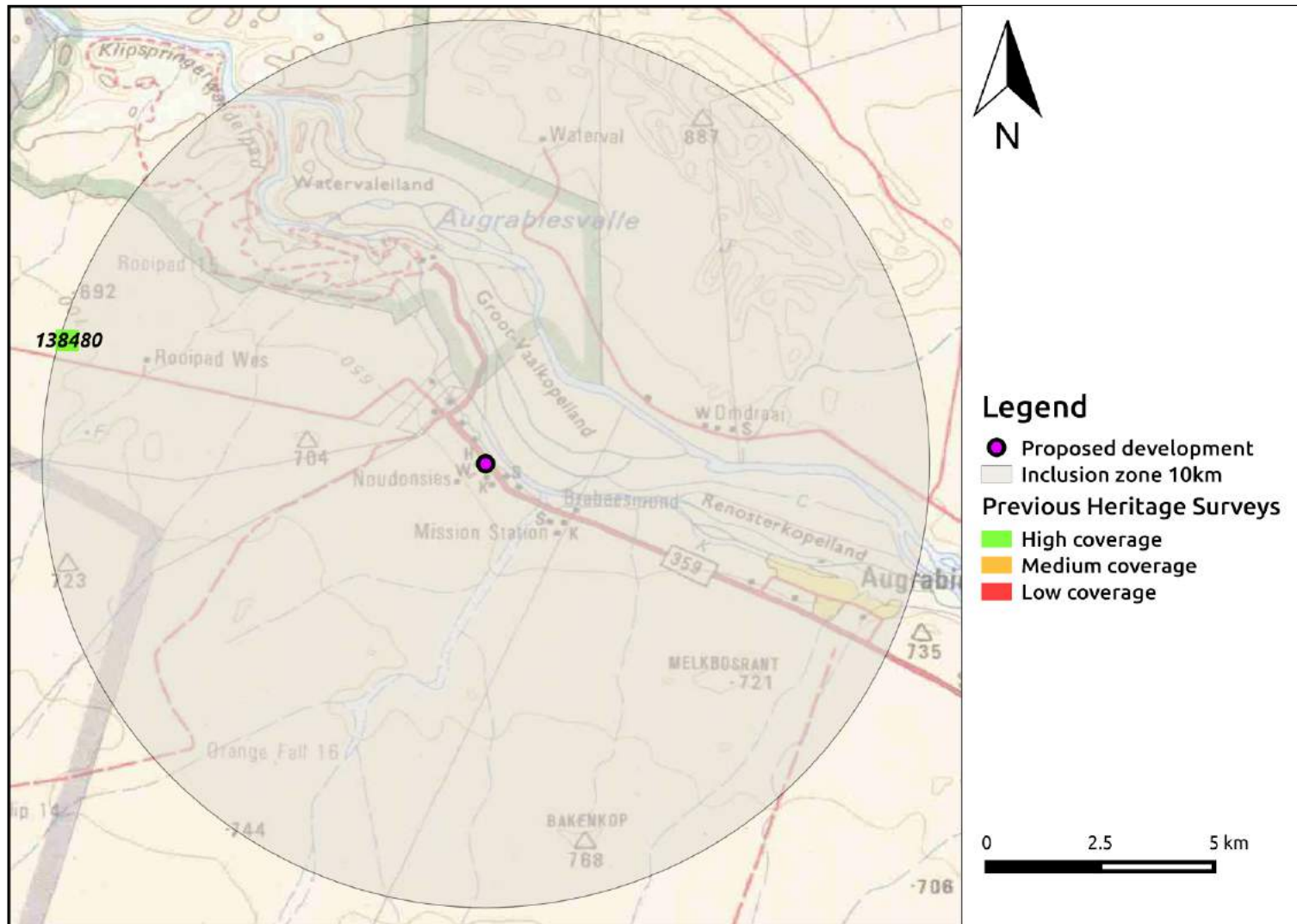
CEDAR TOWER  
SERVICES



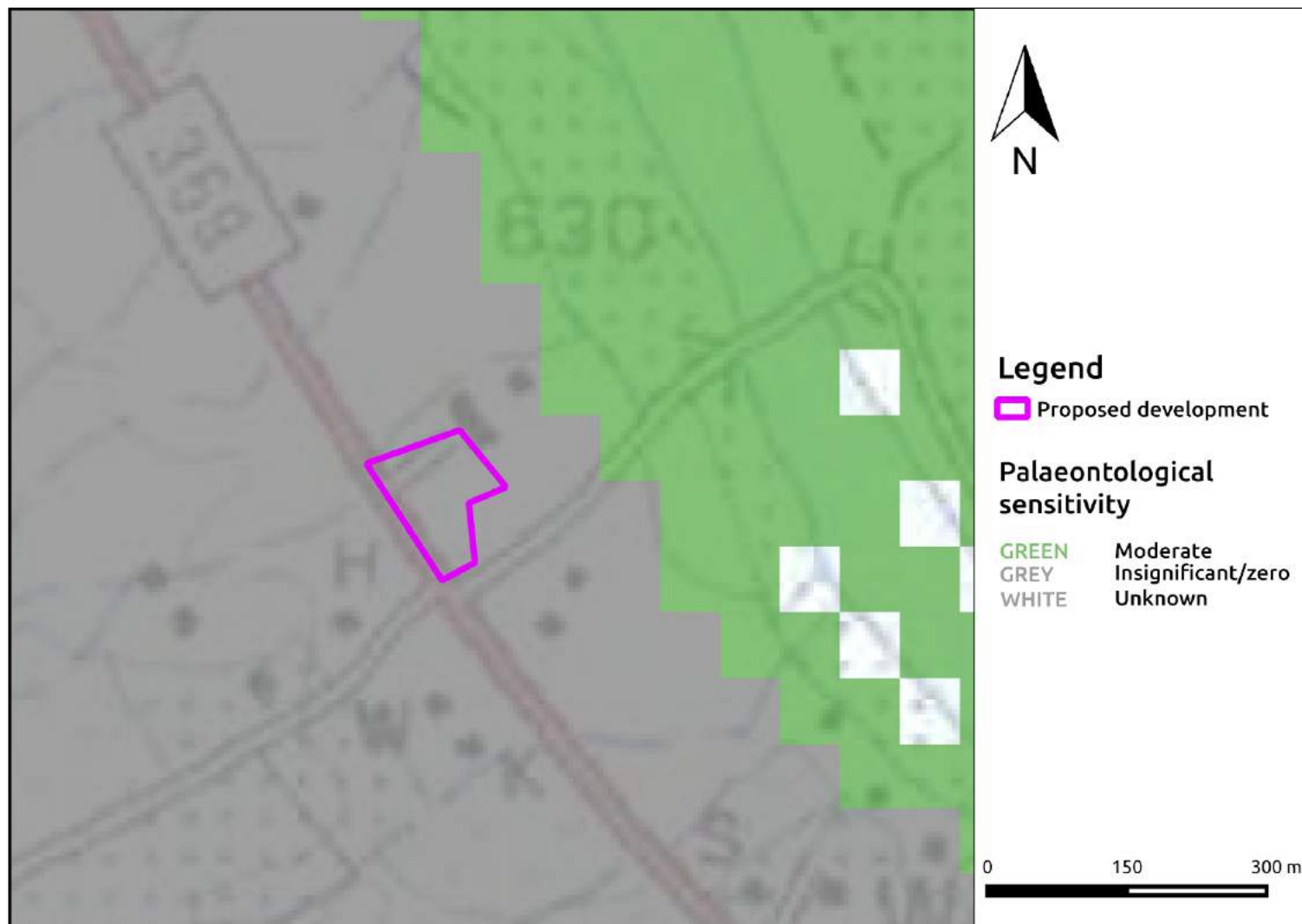
**Figure 2a. HIAs Map.** Previous Heritage Impact Assessments conducted within 10km of the proposed development area with SAHRIS NID labels indicated (excluding PIAs).



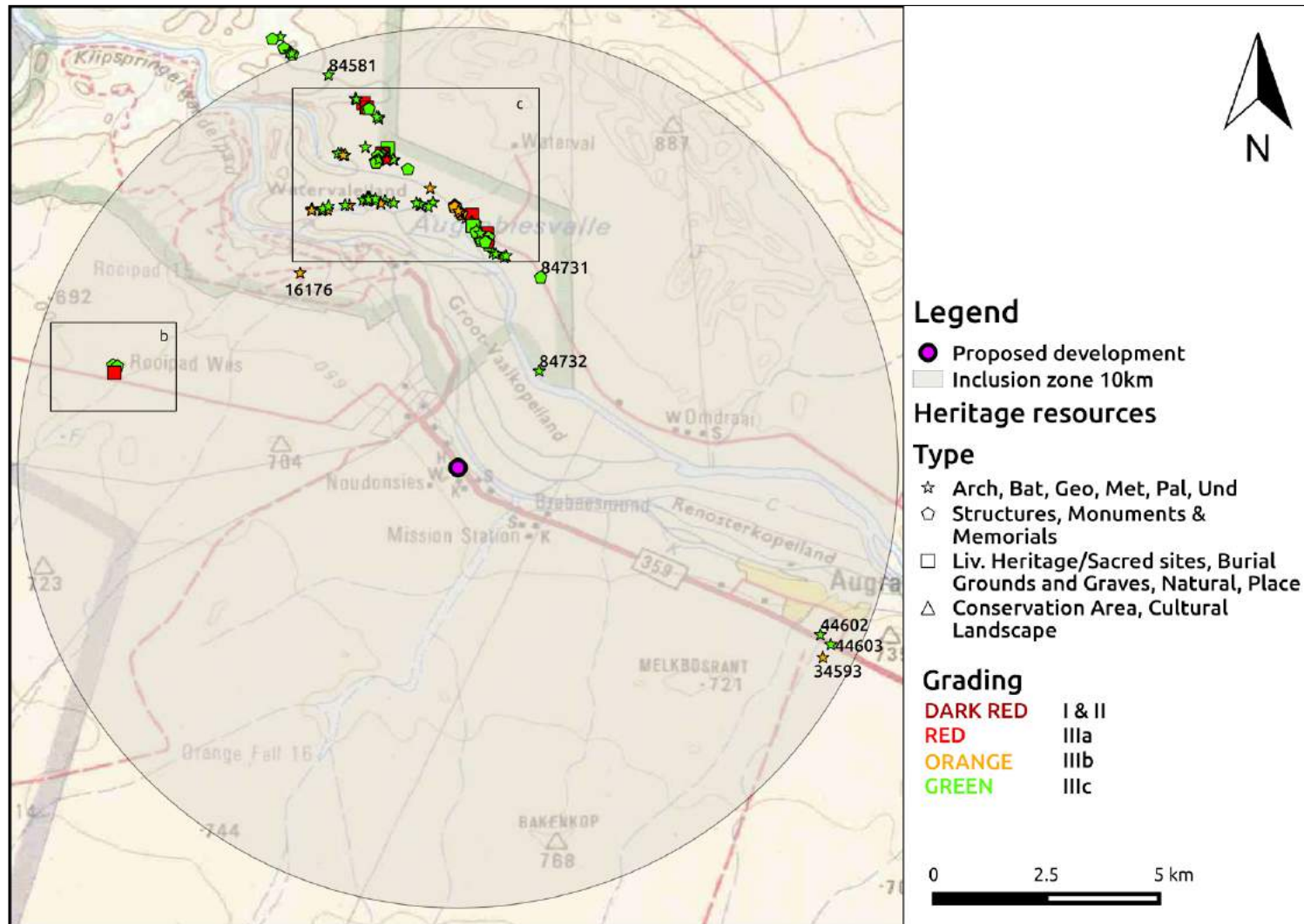
CEDAR TOWER  
SERVICES



**Figure 2b. PIAs Map.** Previous Palaeontological Impact Assessments conducted within 10km of the proposed development area with SAHRIS NID labels indicated.

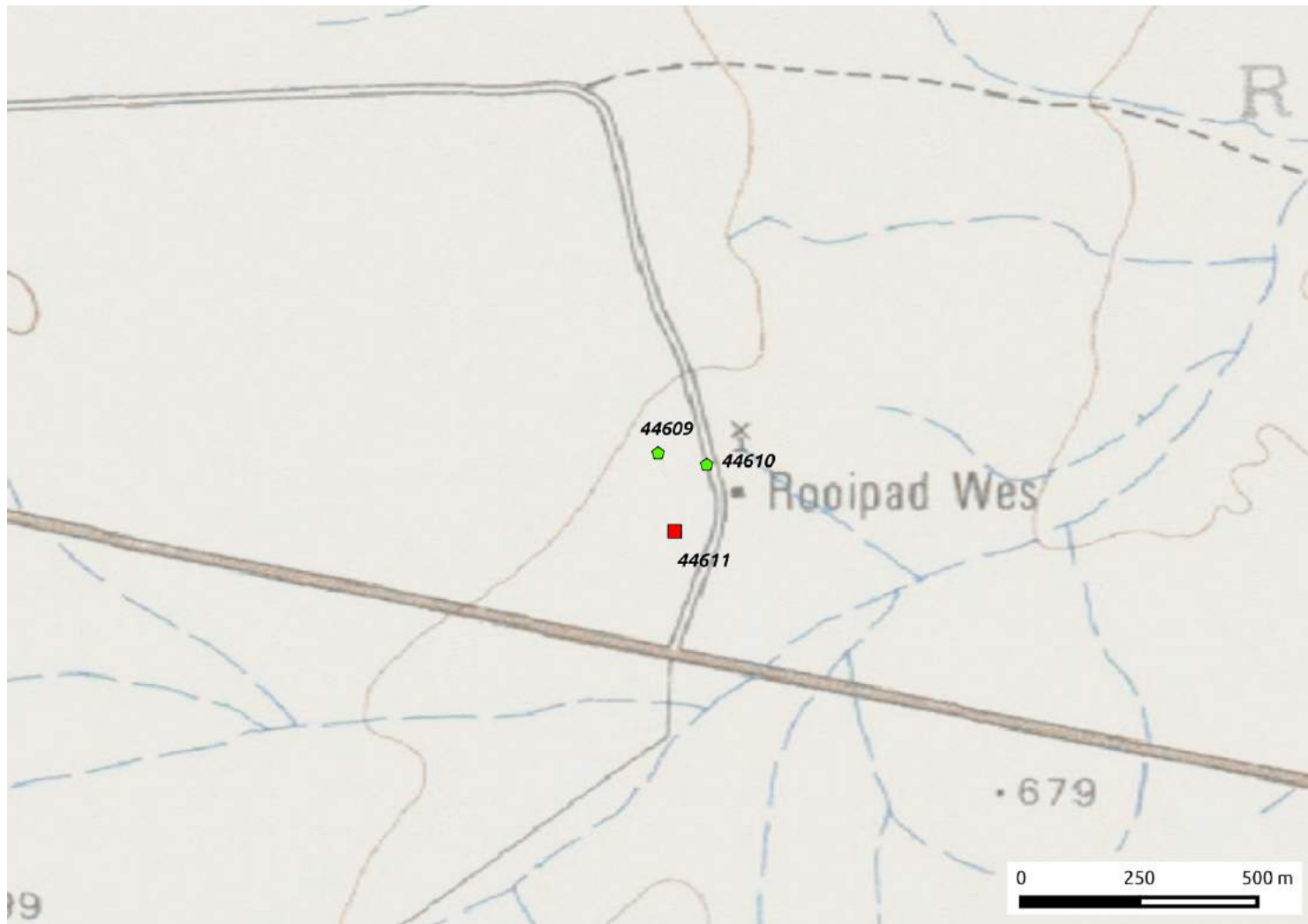


**Figure 3. Palaeo Map.** Palaeosensitivity of the study area. See Appendix 3 for full guide to the legend.



**Figure 4a. Heritage Resources Map.** Heritage resources previously identified in and near the study area, with SAHRIS Site IDs indicated (see Figures 4b & c for insets).





Heritage resources	
Type	
☆	Arch, Bat, Geo, Met, Pal, Und
◇	Structures, Monuments & Memorials
□	Liv. Heritage/Sacred sites, Burial Grounds and Graves, Natural, Place
△	Conservation Area, Cultural Landscape
Grading	
DARK RED	I & II
RED	IIIa
ORANGE	IIIb
GREEN	IIIc

Figure 4b. Inset Map.



CEDAR TOWER  
SERVICES

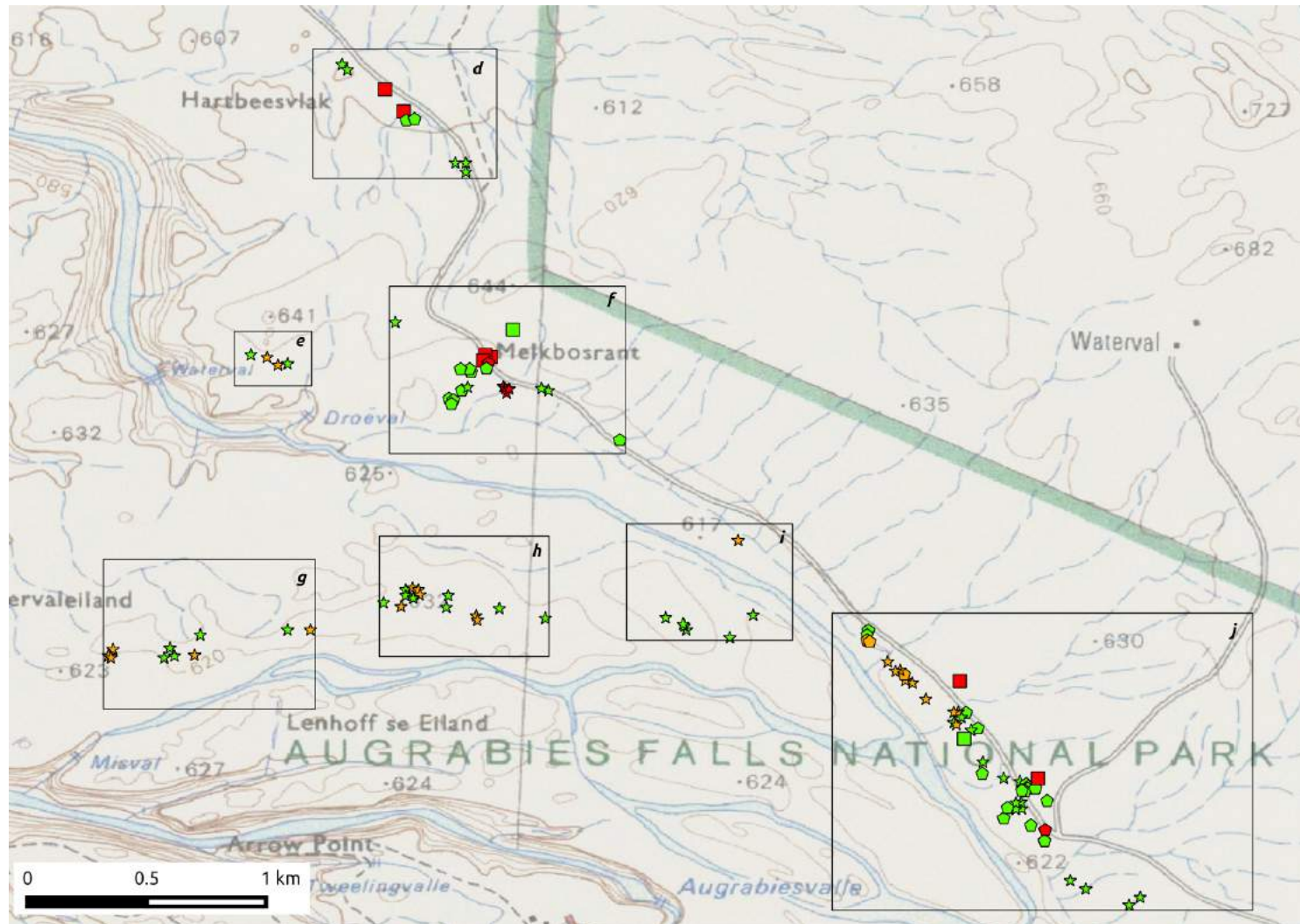


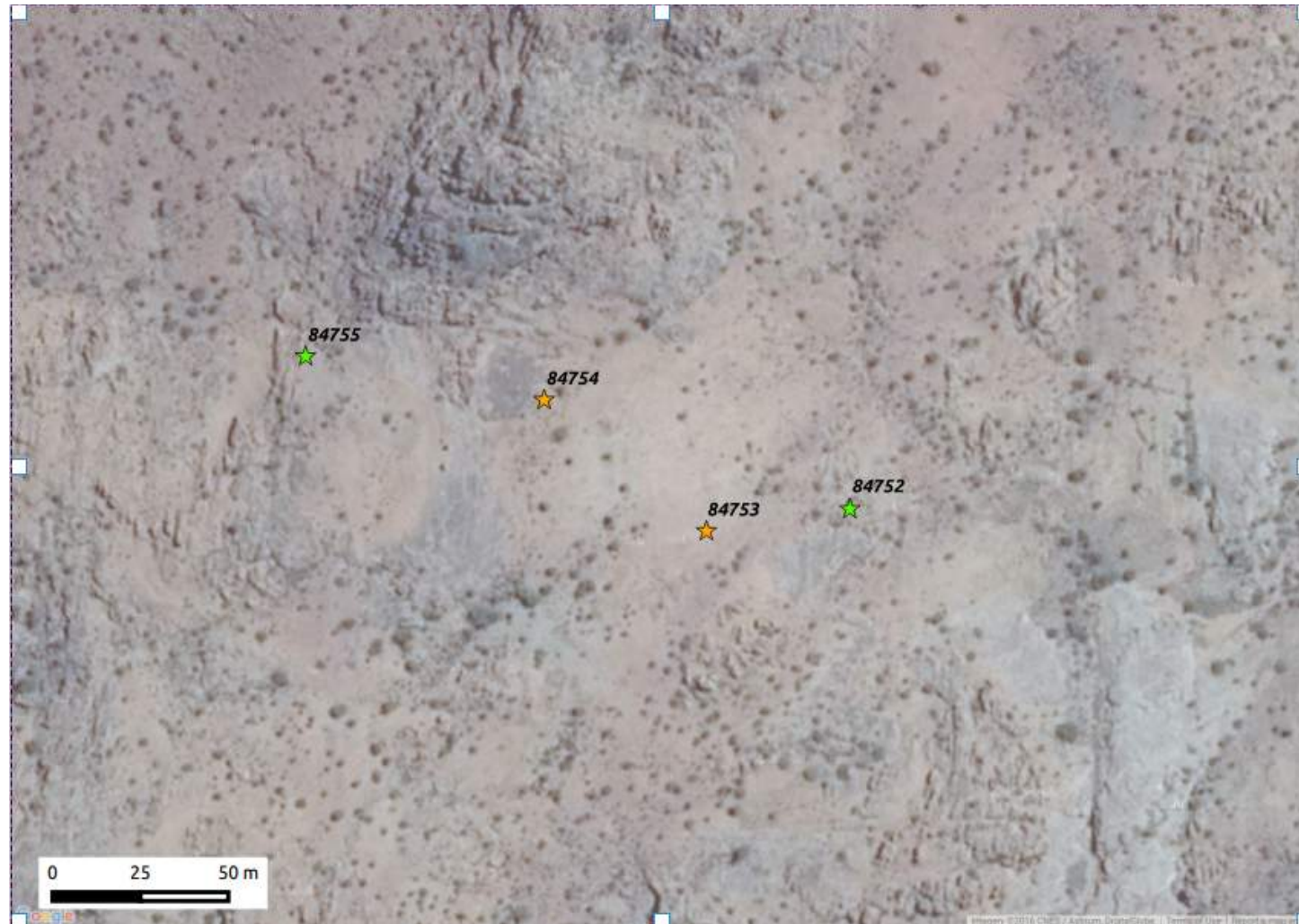
Figure 4c. Inset Map, see Figures 4d - j for insets.



Heritage resources	
Type	
☆	Arch, Bat, Geo, Met, Pal, Und
◇	Structures, Monuments & Memorials
□	Liv. Heritage/Sacred sites, Burial Grounds and Graves, Natural, Place
△	Conservation Area, Cultural Landscape
Grading	
DARK RED	I & II
RED	IIIa
ORANGE	IIIb
GREEN	IIIc

Figure 4d. Inset Map.





### Heritage resources

#### Type

- ☆ Arch, Bat, Geo, Met, Pal, Und
- ◇ Structures, Monuments & Memorials
- Liv. Heritage/Sacred sites, Burial Grounds and Graves, Natural, Place
- △ Conservation Area, Cultural Landscape

#### Grading

- |                 |        |
|-----------------|--------|
| <b>DARK RED</b> | I & II |
| <b>RED</b>      | IIIa   |
| <b>ORANGE</b>   | IIIb   |
| <b>GREEN</b>    | IIIc   |

Figure 4e. Inset Map.





Figure 4f. Inset Map.



#### Heritage resources

##### Type

- ☆ Arch, Bat, Geo, Met, Pal, Und
- ◇ Structures, Monuments & Memorials
- Liv. Heritage/Sacred sites, Burial Grounds and Graves, Natural, Place
- △ Conservation Area, Cultural Landscape

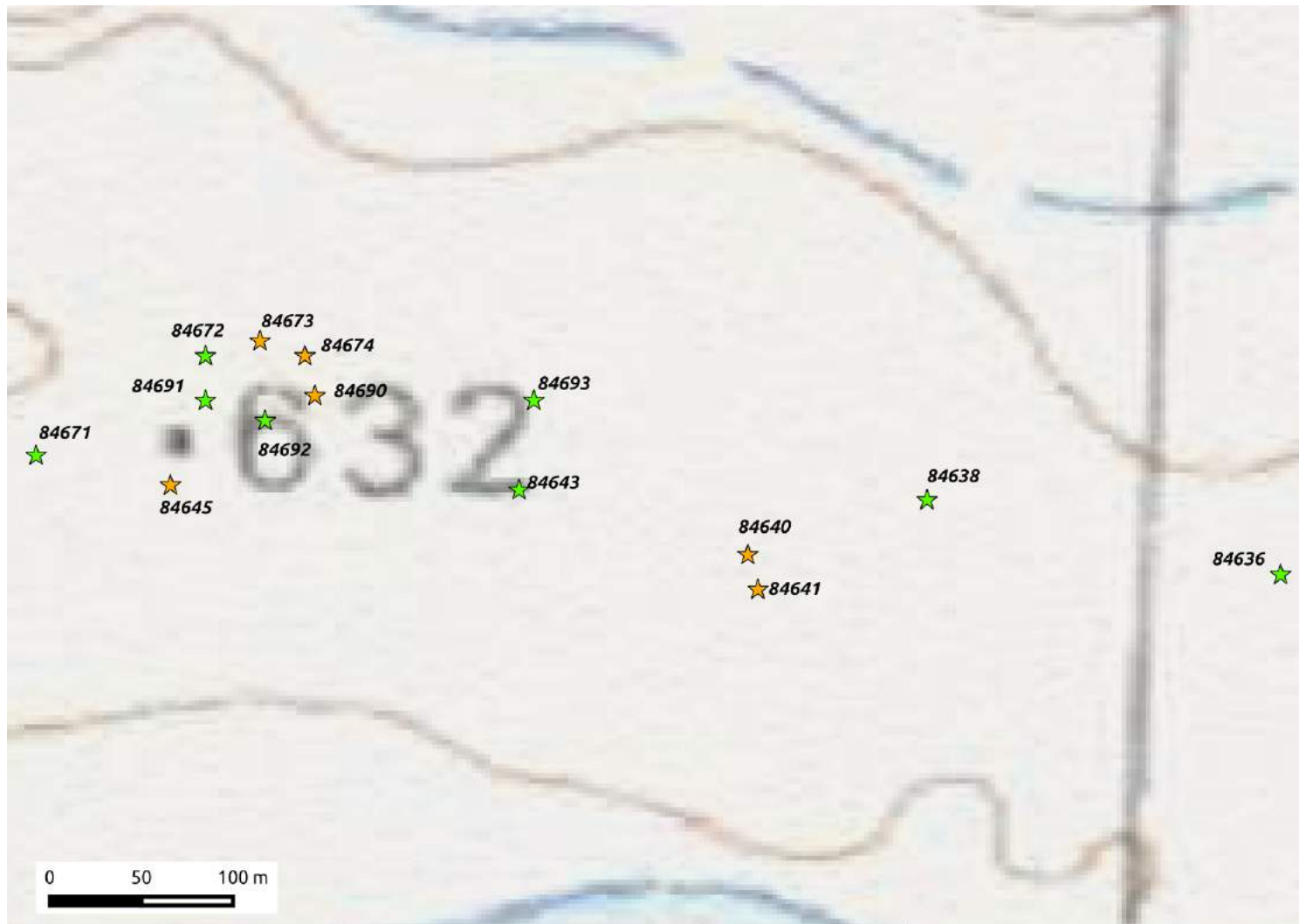
##### Grading

- |                 |        |
|-----------------|--------|
| <b>DARK RED</b> | I & II |
| <b>RED</b>      | IIIa   |
| <b>ORANGE</b>   | IIIb   |
| <b>GREEN</b>    | IIIc   |

Figure 4g. Inset Map.

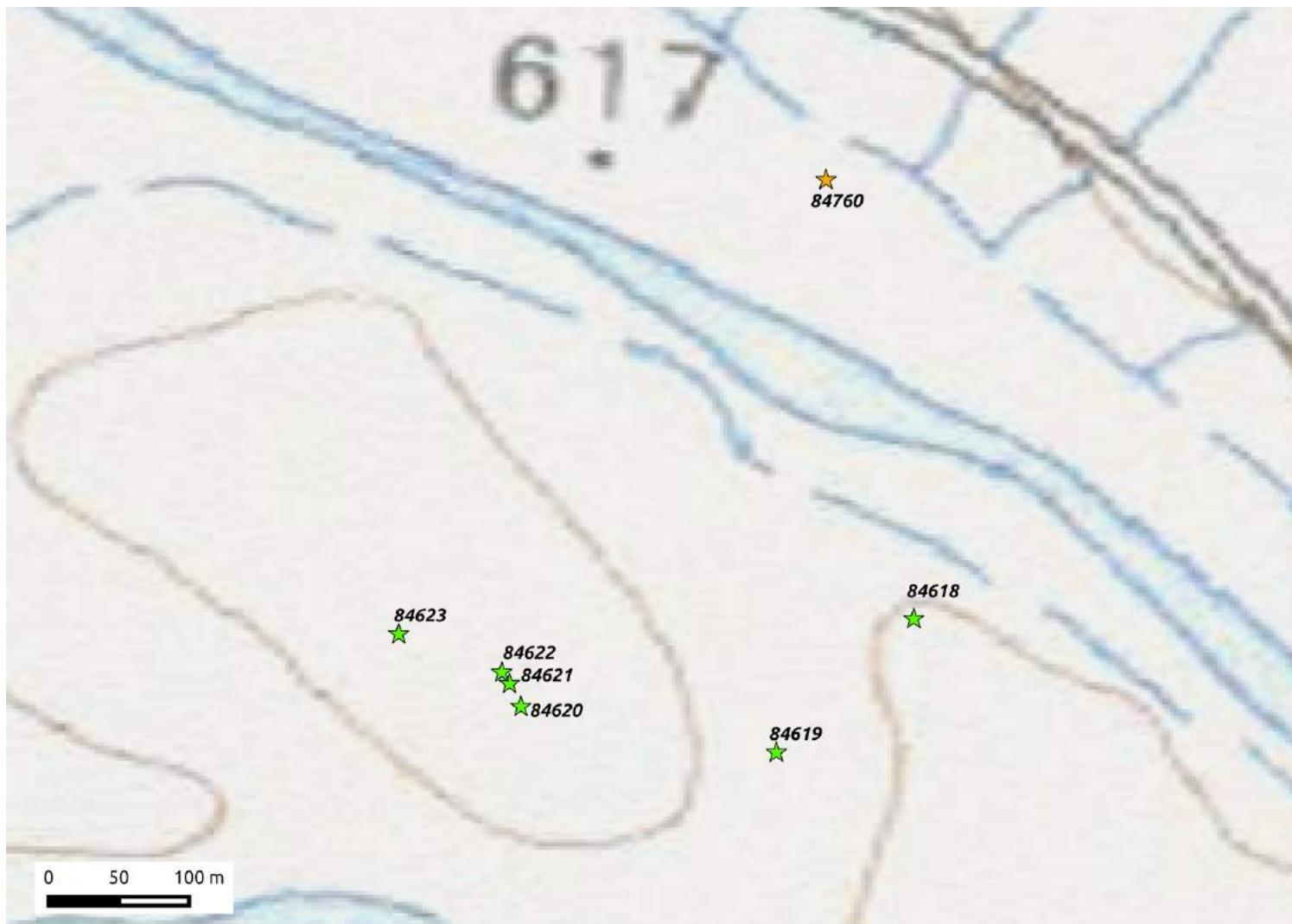


CEDAR TOWER  
SERVICES



Heritage resources	
Type	
☆	Arch, Bat, Geo, Met, Pal, Und
☆	Structures, Monuments & Memorials
□	Liv. Heritage/Sacred sites, Burial Grounds and Graves, Natural, Place
△	Conservation Area, Cultural Landscape
Grading	
DARK RED	I & II
RED	IIIa
ORANGE	IIIb
GREEN	IIIc

Figure 4h. Inset Map.



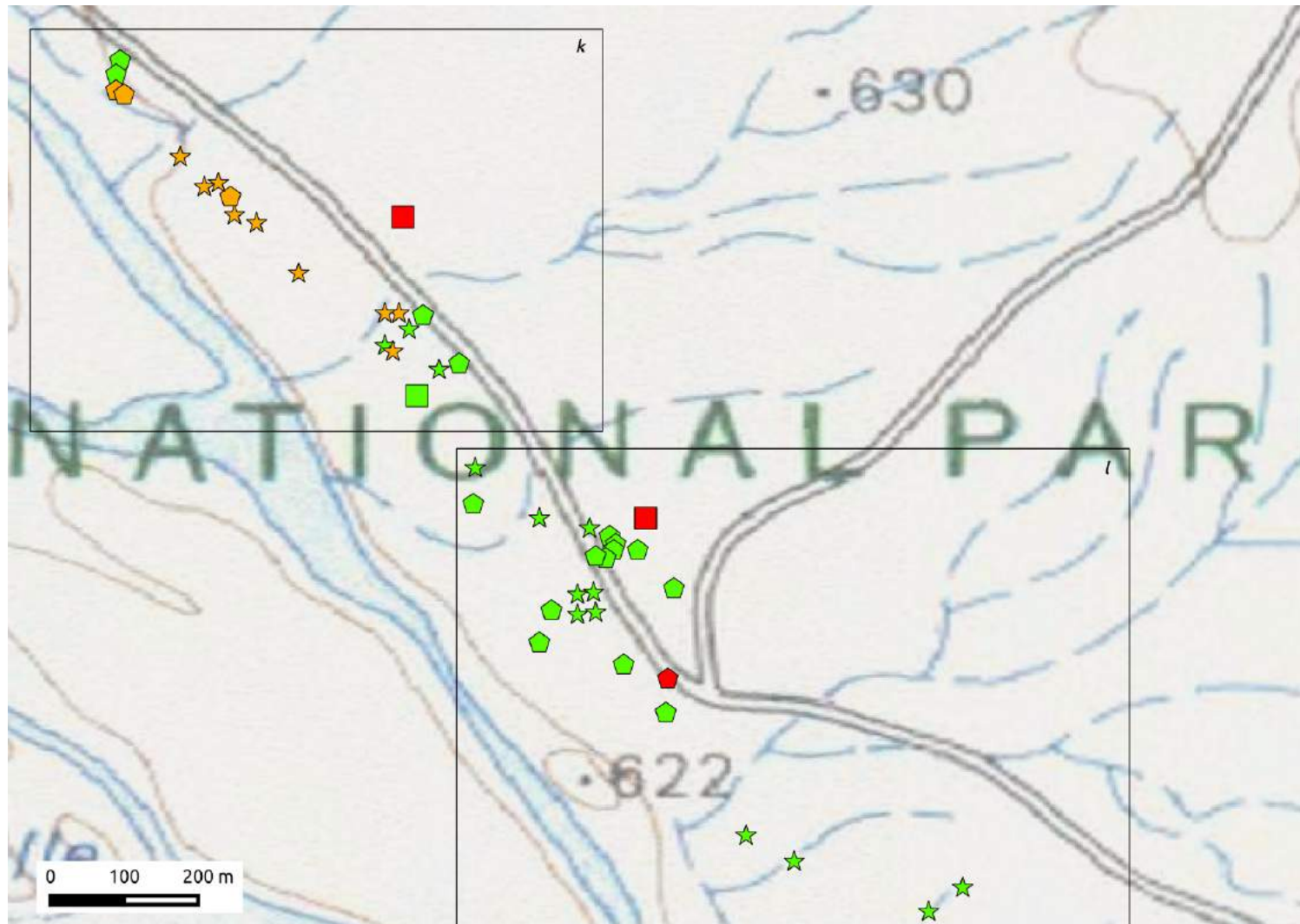
Heritage resources	
Type	
☆	Arch, Bat, Geo, Met, Pal, Und
☆	Structures, Monuments & Memorials
□	Liv. Heritage/Sacred sites, Burial Grounds and Graves, Natural, Place
△	Conservation Area, Cultural Landscape
Grading	
DARK RED	I & II
RED	IIIa
ORANGE	IIIb
GREEN	IIIc

**Figure 4i. Inset Map.**

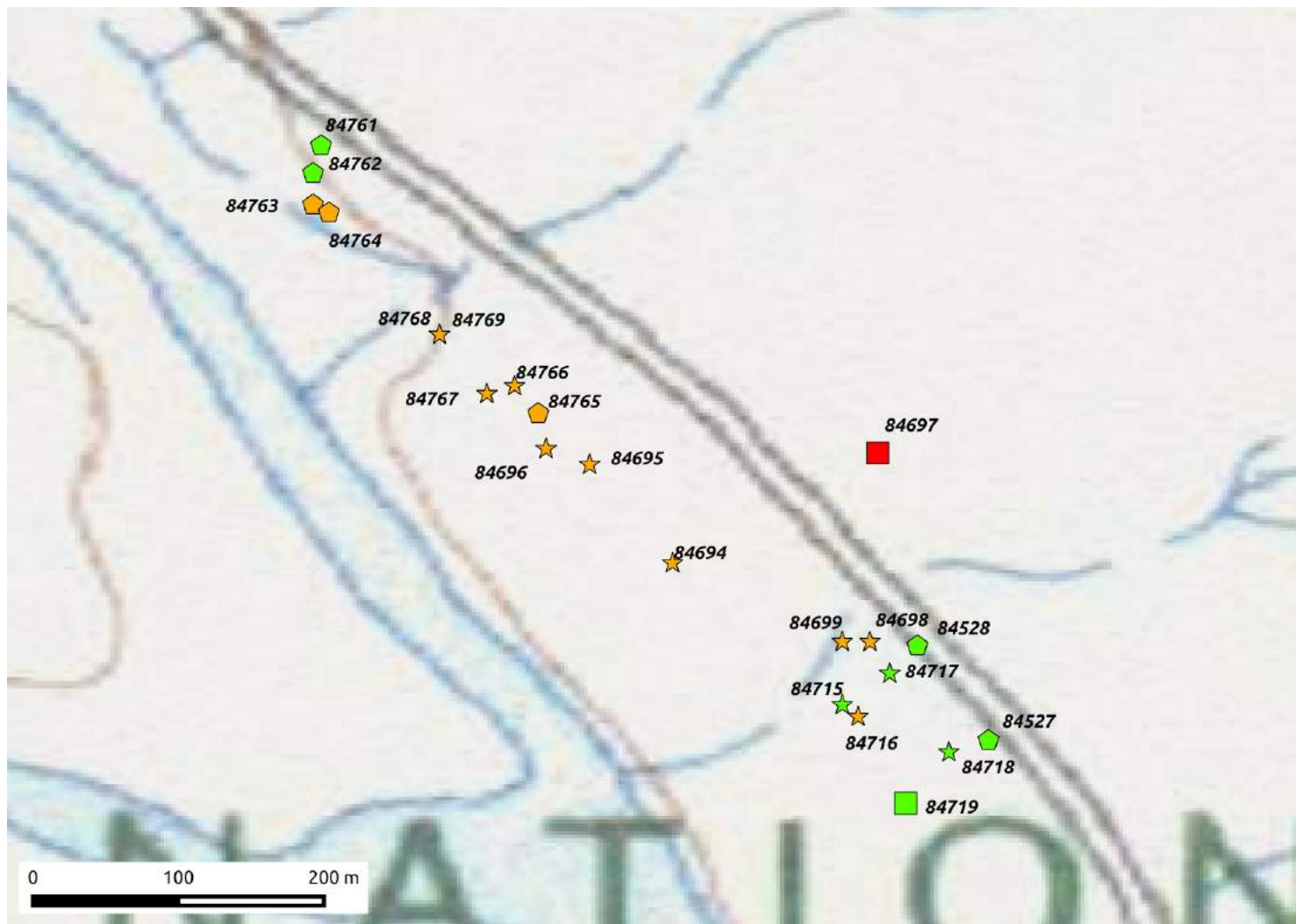




CEDAR TOWER  
SERVICES

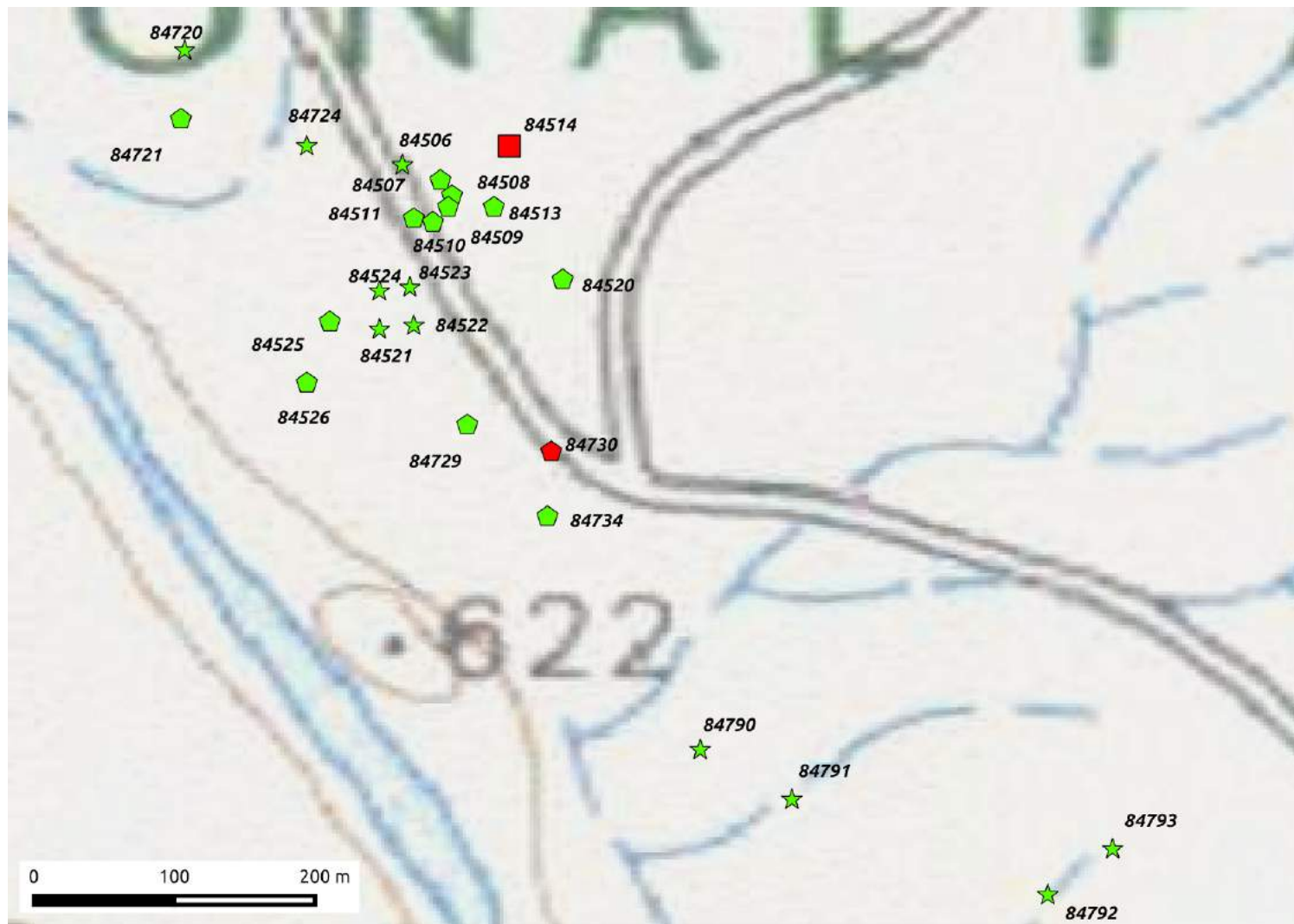


**Figure 4j. Inset Map**, see Figures 4k & l for insets.



Heritage resources	
Type	
☆	Arch, Bat, Geo, Met, Pal, Und
⬡	Structures, Monuments & Memorials
□	Liv. Heritage/Sacred sites, Burial Grounds and Graves, Natural, Place
△	Conservation Area, Cultural Landscape
Grading	
DARK RED	I & II
RED	IIIa
ORANGE	IIIb
GREEN	IIIc

Figure 4k. Inset Map.



#### Heritage resources

##### Type

- ☆ Arch, Bat, Geo, Met, Pal, Und
- ☆ Structures, Monuments & Memorials
- Liv. Heritage/Sacred sites, Burial Grounds and Graves, Natural, Place
- △ Conservation Area, Cultural Landscape

##### Grading

- |          |        |
|----------|--------|
| DARK RED | I & II |
| RED      | IIIa   |
| ORANGE   | IIIb   |
| GREEN    | IIIc   |

Figure 4l. Inset Map.



## 8. Heritage statement and character of the area

EnviroAfrica is undertaking an assessment of Portion 42 of Farm Orange Fall No. 16 in Augrabies, Northern Cape Province for a proposed fuel filling station with fuel storage tanks and retail space (including space for a convenience store). The site is located off the R359.

Not many previous Heritage Impact Assessments (HIAs) have been conducted around this area. An inclusion zone of 10km was chosen to characterise the heritage resources in the proposed development area. The HIAs within this inclusion zone (see Figure 2a &b) were done between 2008 and 2015. One of the most comprehensive HIAs conducted within the inclusion zone was done by Jayson Orton and Lita Webley in 2012 for proposed hydro-electric facilities near Riemvasmaak. During this assessment, 124 heritage resources were recorded, 115 of which are located within the inclusion zone for this development. These sites include burial ground and graves, structures and buildings, Stone Age artefact assemblages, stone walling, monuments and memorials. Similar types of sites have been recorded during other assessments in the surrounding area. This part of the country is also known for the many Stone Age and historical rock engravings carved on dolerite boulders spread across the landscape, as well as historical farmsteads.

The proposed development, however, has a very small footprint and is located on land that has been extensively farmed and disturbed (see Figure 1b). The buildings that exist within the development area were built recently (less than 60 years ago) and therefore are not protected by the National Heritage Resources Act. It is highly unlikely that any *in situ* archaeological resources will be impacted by the proposed fuel filling station or the retail space and it is therefore recommended that **no further Archaeological Impact Assessments be conducted for this project.**

Only one Palaeontological Impact Assessment (PIA) has been conducted within the inclusion zone by John Almond in 2012 for a photovoltaic solar plant. The PIA underlined the low palaeontological significance of the area. The proposed development is underlain by Augrabies granite/gneiss of no fossil sensitivity, and, according to the South African Heritage Resources Information System (SAHRIS) palaeosensitivity map, the area is of insignificant palaeontological importance. **It is therefore recommended that no further Palaeontological Impact Assessments be done for this proposed development.**



## APPENDIX 1 - Site Lists

### List of sites within 10km inclusion zone and outside proposed development area

Site ID	Site no	Full Site Name	Site Type	Grading
84697	Riemva104	Riemvasmaak Hydropower Project 104	Burial Grounds & Graves	Grade IIIa
84726	Riemva124	Riemvasmaak Hydropower Project 124	Burial Grounds & Graves	Grade IIIa
84730	Riemva118	Riemvasmaak Hydropower Project 118	Monuments & Memorials	Grade IIIa
84514	Riemva010	Riemvasmaak Hydropower Project 010	Burial Grounds & Graves	Grade IIIa
84538	Riemva029	Riemvasmaak Hydropower Project 029	Burial Grounds & Graves	Grade IIIa
84539	Riemva030	Riemvasmaak Hydropower Project 030	Burial Grounds & Graves	Grade IIIa
84540	Riemva031	Riemvasmaak Hydropower Project 031	Burial Grounds & Graves	Grade IIIa
84756	Riemva133	Riemvasmaak Hydropower Project 133	Artefacts	Grade IIIa
84541	Riemva032	Riemvasmaak Hydropower Project 032	Structures	Grade IIIa
84757	Riemva134	Riemvasmaak Hydropower Project 134	Artefacts	Grade IIIa
84758	Riemva135	Riemvasmaak Hydropower Project 135	Artefacts	Grade IIIa
84759	Riemva136	Riemvasmaak Hydropower Project 136	Artefacts	Grade IIIa
84569	Riemva045	Riemvasmaak Hydropower Project 045	Burial Grounds & Graves	Grade IIIa
44611	RPD08	Rooipad 15/9 - 08	Burial Grounds & Graves	Grade IIIa
84640	Riemva079	Riemvasmaak Hydropower Project 079	Artefacts	Grade IIIb



84641	Riemva080	Riemvasmaak Hydropower Project 080	Artefacts	Grade IIIb
84645	Riemva082	Riemvasmaak Hydropower Project 082	Artefacts	Grade IIIb
84646	Riemva083	Riemvasmaak Hydropower Project 083	Artefacts	Grade IIIb
84648	Riemva085	Riemvasmaak Hydropower Project 085	Artefacts	Grade IIIb
84659	Riemva087	Riemvasmaak Hydropower Project 087	Artefacts	Grade IIIb
84661	Riemva088	Riemvasmaak Hydropower Project 088	Artefacts	Grade IIIb
84663	Riemva089	Riemvasmaak Hydropower Project 089	Artefacts	Grade IIIb
84673	Riemva095	Riemvasmaak Hydropower Project 095	Artefacts	Grade IIIb
84674	Riemva096	Riemvasmaak Hydropower Project 096	Artefacts	Grade IIIb
84690	Riemva097	Riemvasmaak Hydropower Project 097	Artefacts	Grade IIIb
84694	Riemva101	Riemvasmaak Hydropower Project 101	Artefacts	Grade IIIb
84695	Riemva102	Riemvasmaak Hydropower Project 102	Artefacts	Grade IIIb
84696	Riemva103	Riemvasmaak Hydropower Project 103	Artefacts	Grade IIIb
84698	Riemva105	Riemvasmaak Hydropower Project 105	Artefacts	Grade IIIb
84699	Riemva106	Riemvasmaak Hydropower Project 106	Artefacts	Grade IIIb
84716	Riemva108	Riemvasmaak Hydropower Project 108	Artefacts	Grade IIIb
84754	Riemva131	Riemvasmaak Hydropower Project 131	Artefacts	Grade IIIb
84753	Riemva130	Riemvasmaak Hydropower Project 130	Artefacts	Grade IIIb
84764	Riemva141	Riemvasmaak Hydropower Project 141	Structures	Grade IIIb
84765	Riemva142	Riemvasmaak Hydropower Project 142	Structures	Grade IIIb
84767	Riemva144	Riemvasmaak Hydropower Project 144	Artefacts	Grade IIIb
84768	Riemva145	Riemvasmaak Hydropower Project 145	Artefacts	Grade IIIb
84766	Riemva143	Riemvasmaak Hydropower Project 143	Artefacts	Grade IIIb
84763	Riemva140	Riemvasmaak Hydropower Project 140	Structures	Grade IIIb
84760	Riemva137	Riemvasmaak Hydropower Project 137	Artefacts	Grade IIIb



CEDAR TOWER  
SERVICES

16176	AUGR1	Augrabies Falls 1	Artefacts	Grade IIIb
34593	KAK001	Kakamas 001	Artefacts	Grade IIIb
84611	Riemva065	Riemvasmaak Hydropower Project 065	Artefacts	Grade IIIc
84613	Riemva066	Riemvasmaak Hydropower Project 066	Artefacts	Grade IIIc
84615	Riemva068	Riemvasmaak Hydropower Project 068	Artefacts	Grade IIIc
84616	Riemva069	Riemvasmaak Hydropower Project 069	Stone walling	Grade IIIc
84617	Riemva070	Riemvasmaak Hydropower Project 070	Stone walling	Grade IIIc
84618	Riemva071	Riemvasmaak Hydropower Project 071	Artefacts	Grade IIIc
84620	Riemva073	Riemvasmaak Hydropower Project 073	Artefacts	Grade IIIc
84621	Riemva074	Riemvasmaak Hydropower Project 074	Artefacts	Grade IIIc
84622	Riemva075	Riemvasmaak Hydropower Project 075	Artefacts	Grade IIIc
84623	Riemva076	Riemvasmaak Hydropower Project 076	Artefacts	Grade IIIc
84619	Riemva072	Riemvasmaak Hydropower Project 072	Artefacts	Grade IIIc
84636	Riemva077	Riemvasmaak Hydropower Project 077	Artefacts	Grade IIIc
84638	Riemva078	Riemvasmaak Hydropower Project 078	Artefacts	Grade IIIc
84643	Riemva081	Riemvasmaak Hydropower Project 081	Artefacts	Grade IIIc
84647	Riemva084	Riemvasmaak Hydropower Project 084	Artefacts	Grade IIIc
84649	Riemva086	Riemvasmaak Hydropower Project 086	Artefacts	Grade IIIc
84665	Riemva090	Riemvasmaak Hydropower Project 090	Artefacts	Grade IIIc
84667	Riemva091	Riemvasmaak Hydropower Project 091	Artefacts	Grade IIIc
84669	Riemva092	Riemvasmaak Hydropower Project 092	Artefacts	Grade IIIc
84671	Riemva093	Riemvasmaak Hydropower Project 093	Artefacts	Grade IIIc
84672	Riemva094	Riemvasmaak Hydropower Project 094	Artefacts	Grade IIIc
84691	Riemva098	Riemvasmaak Hydropower Project 098	Artefacts	Grade IIIc
84692	Riemva099	Riemvasmaak Hydropower Project 099	Artefacts	Grade IIIc



84693	Riemva100	Riemvasmaak Hydropower Project 100	Artefacts	Grade IIIc
84715	Riemva107	Riemvasmaak Hydropower Project 107	Artefacts	Grade IIIc
84717	Riemva109	Riemvasmaak Hydropower Project 109	Artefacts	Grade IIIc
84718	Riemva110	Riemvasmaak Hydropower Project 110	Artefacts	Grade IIIc
84719	Riemva111	Riemvasmaak Hydropower Project 111	Burial Grounds & Graves	Grade IIIc
84720	Riemva112	Riemvasmaak Hydropower Project 112	Artefacts	Grade IIIc
84721	Riemva113	Riemvasmaak Hydropower Project 113	Structures	Grade IIIc
84724	Riemva116	Riemvasmaak Hydropower Project 116	Artefacts	Grade IIIc
84506	Riemva002	Riemvasmaak Hydropower Project 002	Artefacts	Grade IIIc
84729	Riemva117	Riemvasmaak Hydropower Project 117	Structures	Grade IIIc
84507	Riemva003	Riemvasmaak Hydropower Project 003	Structures	Grade IIIc
84508	Riemva004	Riemvasmaak Hydropower Project 004	Structures	Grade IIIc
84731	Riemva119	Riemvasmaak Hydropower Project 119	Structures	Grade IIIc
84509	Riemva005	Riemvasmaak Hydropower Project 005	Structures	Grade IIIc
84732	Riemva120	Riemvasmaak Hydropower Project 120	Artefacts	Grade IIIc
84510	Riemva006	Riemvasmaak Hydropower Project 006	Structures	Grade IIIc
84511	Riemva007	Riemvasmaak Hydropower Project 007	Structures	Grade IIIc
84734	Riemva121	Riemvasmaak Hydropower Project 121	Structures	Grade IIIc
84513	Riemva009	Riemvasmaak Hydropower Project 009	Structures	Grade IIIc
84520	Riemva011	Riemvasmaak Hydropower Project 011	Structures	Grade IIIc
84522	Riemva013	Riemvasmaak Hydropower Project 013	Stone walling	Grade IIIc
84523	Riemva014	Riemvasmaak Hydropower Project 014	Stone walling	Grade IIIc
84526	Riemva017	Riemvasmaak Hydropower Project 017	Structures	Grade IIIc
84521	Riemva012	Riemvasmaak Hydropower Project 012	Stone walling	Grade IIIc





84524	Riemva015	Riemvasmaak Hydropower Project 015	Stone walling	Grade IIIc
84525	Riemva016	Riemvasmaak Hydropower Project 016	Structures	Grade IIIc
84529	Riemva020	Riemvasmaak Hydropower Project 020	Structures	Grade IIIc
84537	Riemva028	Riemvasmaak Hydropower Project 028	Burial Grounds & Graves	Grade IIIc
84755	Riemva132	Riemvasmaak Hydropower Project 132	Artefacts	Grade IIIc
84542	Riemva033	Riemvasmaak Hydropower Project 033	Structures	Grade IIIc
84543	Riemva034	Riemvasmaak Hydropower Project 034	Structures	Grade IIIc
84544	Riemva035	Riemvasmaak Hydropower Project 035	Structures	Grade IIIc
84750	Riemva127	Riemvasmaak Hydropower Project 127	Structures	Grade IIIc
84751	Riemva128	Riemvasmaak Hydropower Project 128	Structures	Grade IIIc
84752	Riemva129	Riemvasmaak Hydropower Project 129	Artefacts	Grade IIIc
84527	Riemva018	Riemvasmaak Hydropower Project 018	Structures	Grade IIIc
84528	Riemva019	Riemvasmaak Hydropower Project 019	Structures	Grade IIIc
84761	Riemva138	Riemvasmaak Hydropower Project 138	Structures	Grade IIIc
84762	Riemva139	Riemvasmaak Hydropower Project 139	Structures	Grade IIIc
84769	Riemva146	Riemvasmaak Hydropower Project 146	Artefacts	Grade IIIc
84560	Riemva036	Riemvasmaak Hydropower Project 036	Structures	Grade IIIc
84561	Riemva037	Riemvasmaak Hydropower Project 037	Structures	Grade IIIc
84562	Riemva038	Riemvasmaak Hydropower Project 038	Structures	Grade IIIc
84563	Riemva039	Riemvasmaak Hydropower Project 039	Structures	Grade IIIc
84564	Riemva040	Riemvasmaak Hydropower Project 040	Structures	Grade IIIc
84565	Riemva041	Riemvasmaak Hydropower Project 041	Stone walling	Grade IIIc
84566	Riemva042	Riemvasmaak Hydropower Project 042	Artefacts	Grade IIIc
84568	Riemva044	Riemvasmaak Hydropower Project 044	Artefacts	Grade IIIc



CEDAR TOWER  
SERVICES

84567	Riemva043	Riemvasmaak Hydropower Project 043	Archaeological	Grade IIIc
84581	Riemva046	Riemvasmaak Hydropower Project 046	Artefacts	Grade IIIc
44602	KAKA03	Kakamas Suid 03	Artefacts	Grade IIIc
44603	KAKA04	Kakamas Suid 04	Artefacts	Grade IIIc
44609	RPD06	Rooipad 15/9 - 06	Structures	Grade IIIc
44610	RPD07	Rooipad 15/9 - 07	Building	Grade IIIc
84790	Riemva147	Riemvasmaak Hydropower Project 147	Archaeological	Grade IIIc
84791	Riemva148	Riemvasmaak Hydropower Project 148	Artefacts	Grade IIIc
84792	Riemva149	Riemvasmaak Hydropower Project 149	Artefacts	Grade IIIc
84793	Riemva150	Riemvasmaak Hydropower Project 150	Stone walling	Grade IIIc

**Cedar Tower Services (Pty) Ltd**

34 Harries Street, Plumstead, Cape Town, 7800

**Tel:** (021) 0130131 **Email:** info@cedartower.co.za **Web:** www.cedartower.co.za

## APPENDIX 2 - Reference List

Nid	Report Type	Author/s	Date	Title
<b>Archaeological/Heritage Impact Assessments</b>				
117566	HIA	Johnny Van Schalkwyk	15/03/2015	Heritage impact assessment for the Proposed Resort Development On A Section Of The Farm Orange Fall 16, Kai !garib Municipality, Northern Cape Province
123610	HIA	Cobus Dreyer	25/06/2013	First phase archaeological & heritage assessment of the proposed new cemetery at Augrabies, Kakamas district, Northern Cape Province
145445	HIA	Johnny Van Schalkwyk	17/09/2013	Cultural heritage impact assessment for the proposed township development on a section of the farm Kakamas Suid 28, Augrabies
126000	HIA	Jayson Orton Lita Webley	07/12/2012	Heritage Impact Assessment For Proposed Hydro-Electric Facilities Near Riemvasmaak, Northern Cape
137379	HIA	Jayson Orton	24/02/2012	Heritage Impact Assessment For The Proposed Augrabies Solar Energy Facility, Kenhardt Magisterial District, Northern Cape
7015	AIA	Peter Beaumont	27/09/2008	Phase 1 Archaeological Impact Assessment Report on Kakamas South Farm 2092 near Augrabies, Siyanda District Municipality, Northern Cape Province
<b>Palaeontological Impact Assessment</b>				
138480	PIA	John E Almond	01/02/2012	Palaeontological Assessment: Recommended Exemption From Further Palaeontological Studies: Proposed Photovoltaic Solar Plant On The Farm Rooipad No. 15 Near Augrabies, Northern Cape Province

## APPENDIX 3 - Keys/Guides

### Key/Guide to Acronyms

<b>AIA</b>	Archaeological Impact Assessment
<b>DEA</b>	Department of Environmental Affairs
<b>DEADP</b>	Department of Environmental Affairs and Development Planning
<b>DMR</b>	Department of Mineral Resources
<b>HIA</b>	Heritage Impact Assessment
<b>HWC</b>	Heritage Western Cape
<b>MPRDA</b>	Mineral and Petroleum Resources Development Act, no 28 of 2002
<b>NEMA</b>	National Environmental Management Act, no 107 of 1998
<b>NHRA</b>	National Heritage Resources Act, no 25 of 1999
<b>PIA</b>	Palaeontological Impact Assessment
<b>SAHRA</b>	South African Heritage Resources Agency
<b>SAHRIS</b>	South African Heritage Resources Information System
<b>VIA</b>	Visual Impact Assessment

### Full guide to Palaeosensitivity Map legend

<b>RED:</b>	VERY HIGH - field assessment and protocol for finds is required
<b>ORANGE/YELLOW:</b>	HIGH - desktop study is required and based on the outcome of the desktop study, a field assessment is likely
<b>GREEN:</b>	MODERATE - desktop study is required
<b>BLUE/PURPLE:</b>	LOW - no palaeontological studies are required however a protocol for chance finds is required
<b>GREY:</b>	INSIGNIFICANT/ZERO - no palaeontological studies are required
<b>WHITE/CLEAR:</b>	UNKNOWN - these areas will require a minimum of a desktop study.





## APPENDIX 4 - Methodology

The Heritage Screener summarises the heritage impact assessments and studies previously undertaken within the area of the proposed development and its surroundings. Heritage resources identified in these reports are assessed by our team during the screening process.

The heritage resources will be described both in terms of **type**:

- Group 1: Archaeological, Underwater, Palaeontological and Geological sites, Meteorites, and Battlefields
- Group 2: Structures, Monuments and Memorials
- Group 3: Burial Grounds and Graves, Living Heritage, Sacred and Natural sites
- Group 4: Cultural Landscapes, Conservation Areas and Scenic routes

and **significance** (Grade I, II, IIIa, b or c, ungraded), as determined by the author of the original heritage impact assessment report or by formal grading and/or protection by the heritage authorities.

Grading of heritage sites which form part of the national estate is defined in s. 7 of the National Heritage Resources Act (NHRA) as:

*(a) **Grade I:** Heritage resources with qualities so exceptional that they are of special national significance; Examples of these sites are Mapungubwe Cultural Landscape, The Parliament of South Africa, Sarah Baartman Burial Site, Robert Sobukwe's grave, Lake Fundudzi, Voortrekker Monument, Union Buildings.*

*(b) **Grade II:** Heritage resources which, although forming part of the national estate, can be considered to have special qualities which make them significant within the context of a province or a region; they are normally declared Provincial Heritage Sites under s. 27 of the NHRA after the competent Provincial Heritage Resources Authority has established their significance. Many of the current Provincial Heritage Sites were declared National Monument under the previous heritage legislation and their status was changed to Provincial Heritage Sites when the National Heritage Resources Act was proclaimed in 1999. Amongst these sites, Mapoch's Caves in Limpopo, Umhlathuzana Rock Shelter in KwaZulu Natal, Van der Stel's Copper Mine in the Northern Cape, the old Cemetery in Grahamstown, Eastern Cape and Baboon Point, in the Western Cape.*

*(c) **Grade III:** Other heritage resources worthy of conservation, and which prescribes heritage resources assessment criteria, consistent with the criteria set out in section 3(3), which must be used by a heritage resources authority or a local authority to assess the intrinsic, comparative and contextual significance of a heritage resource and the relative benefits and costs of its protection, so that the appropriate level of grading of the resource and the consequent responsibility for its management may be allocated (...).*

The following sub-categories are currently in use for Grade III::

**Grade IIIa** sites are sites of such a high local significance that should be protected and retained. These sites should be included in the heritage register of each province as defined in s. 30 of the NHRA and should not be impacted upon. In the instance of buildings, any alteration must be regulated. Because of their nature, all human remains are considered of high



significance. While relocation of graves is common practice, this should always be considered as the last option. Examples of these sites are all graves and burial grounds which have not been graded I or II, Peers Cave in Western Cape,

**Grade IIIb** sites are resources of medium local significance. They should preferably be retained where possible, but where not possible the site must be fully investigated and/or mitigated. After mitigation they may be impacted upon.

**Grade IIIc** sites are of low local significance. These resources must be satisfactorily studied before destruction. In many instances the recording and description of the site undertaken at the heritage impact assessment level is sufficient and further recording or mitigation may not be required. These sites include for instance small knapping sites which have been sufficiently recorded at the archaeological impact assessment level, palaeontological fossils of low significance which do not require recovery. In the case of the built environment, IIIc structures will only require protection and regulation if the significance of the environs in which they are located is sufficient to warrant protective measures.

The heritage specialist in the field should suggest a grading for the site, but it will then need to be ratified and accepted by the competent heritage authority.

#### **DETERMINATION OF THE EXTENT OF THE INCLUSION ZONE TO BE TAKEN INTO CONSIDERATION**

The extent of the inclusion zone to be considered for the Heritage Screener will be determined by CTS based on:

- the size of the development,
- the number and outcome of previous surveys existing in the area
- the potential cumulative impact of the application.

The inclusion zone will be considered as the region within a maximum distance of 50 km from the boundary of the proposed development.

#### **DETERMINATION OF THE PALAEONTOLOGICAL SENSITIVITY**

The possible impact of the proposed development on palaeontological resources is gauged by:

- reviewing the fossil sensitivity maps available on the South African Heritage Resources Information System (SAHRIS)
- considering the nature of the proposed development
- when available, taking information provided by the applicant related to the geological background of the area into account

#### **DETERMINATION OF THE COVERAGE RATING ASCRIBED TO A REPORT POLYGON**

Each report assessed for the compilation of the Heritage Screener is colour-coded according to the level of coverage accomplished. The extent of the surveyed coverage is labeled in three categories, namely low, medium and high. In most instances the extent of the map corresponds to the extent of the development for which the specific report was undertaken.



**Low coverage** will be used for:

- desktop studies where no field assessment of the area was undertaken;
- reports where the sites are listed and described but no GPS coordinates were provided.
- older reports with GPS coordinates with low accuracy ratings;
- reports where the entire property was mapped, but only a small/limited area was surveyed.
- uploads on the National Inventory which are not properly mapped.

**Medium coverage** will be used for

- reports for which a field survey was undertaken but the area was not extensively covered. This may apply to instances where some impediments did not allow for full coverage such as thick vegetation, etc.
- reports for which the entire property was mapped, but only a specific area was surveyed thoroughly. This is differentiated from low ratings listed above when these surveys cover up to around 50% of the property.

**High coverage** will be used for

- reports where the area highlighted in the map was extensively surveyed as shown by the GPS track coordinates. This category will also apply to permit reports.

## RECOMMENDATION GUIDE

The Heritage Screener includes a set of recommendations to the applicant based on whether an impact on heritage resources is anticipated. One of three possible recommendations is formulated:

**(1) The heritage resources in the area proposed for development are sufficiently recorded** - The surveys undertaken in the area adequately captured the heritage resources. There are no known sites which require mitigation or management plans. No further heritage work is recommended for the proposed development.

This recommendation is made when:

- enough work has been undertaken in the area
- it is the professional opinion of CTS that the area has already been assessed adequately from a heritage perspective for the type of development proposed

**(2) The heritage resources and the area proposed for development are only partially recorded** - The surveys undertaken in the area have not adequately captured the heritage resources and/or there are sites which require mitigation or management plans. Further specific heritage work is recommended for the proposed development.

This recommendation is made in instances in which there are already some studies undertaken in the area and/or in the adjacent area for the proposed development. Further studies in a limited HIA may include:

- improvement on some components of the heritage assessments already undertaken, for instance with a renewed field survey and/or with a specific specialist for the type of heritage resources expected in the area



- compilation of a report for a component of a heritage impact assessment not already undertaken in the area
- undertaking mitigation measures requested in previous assessments/records of decision.

**(3) The heritage resources within the area proposed for the development have not been adequately surveyed yet - Few or no surveys have been undertaken in the area proposed for development. A full Heritage Impact Assessment with a detailed field component is recommended for the proposed development.**

**Note:**

The responsibility for generating a response detailing the requirements for the development lies with the heritage authority. However, since the methodology utilised for the compilation of the Heritage Screeners is thorough and consistent, contradictory outcomes to the recommendations made by CTS should rarely occur. Should a discrepancy arise, CTS will immediately take up the matter with the heritage authority to clarify the dispute.

The compilation of the Heritage Screener will not include any field assessment. The Heritage Screener will be submitted to the applicant within 24 hours from receipt of full payment. **If the 24-hour deadline is not met by CTS, the applicant will be refunded in full.**