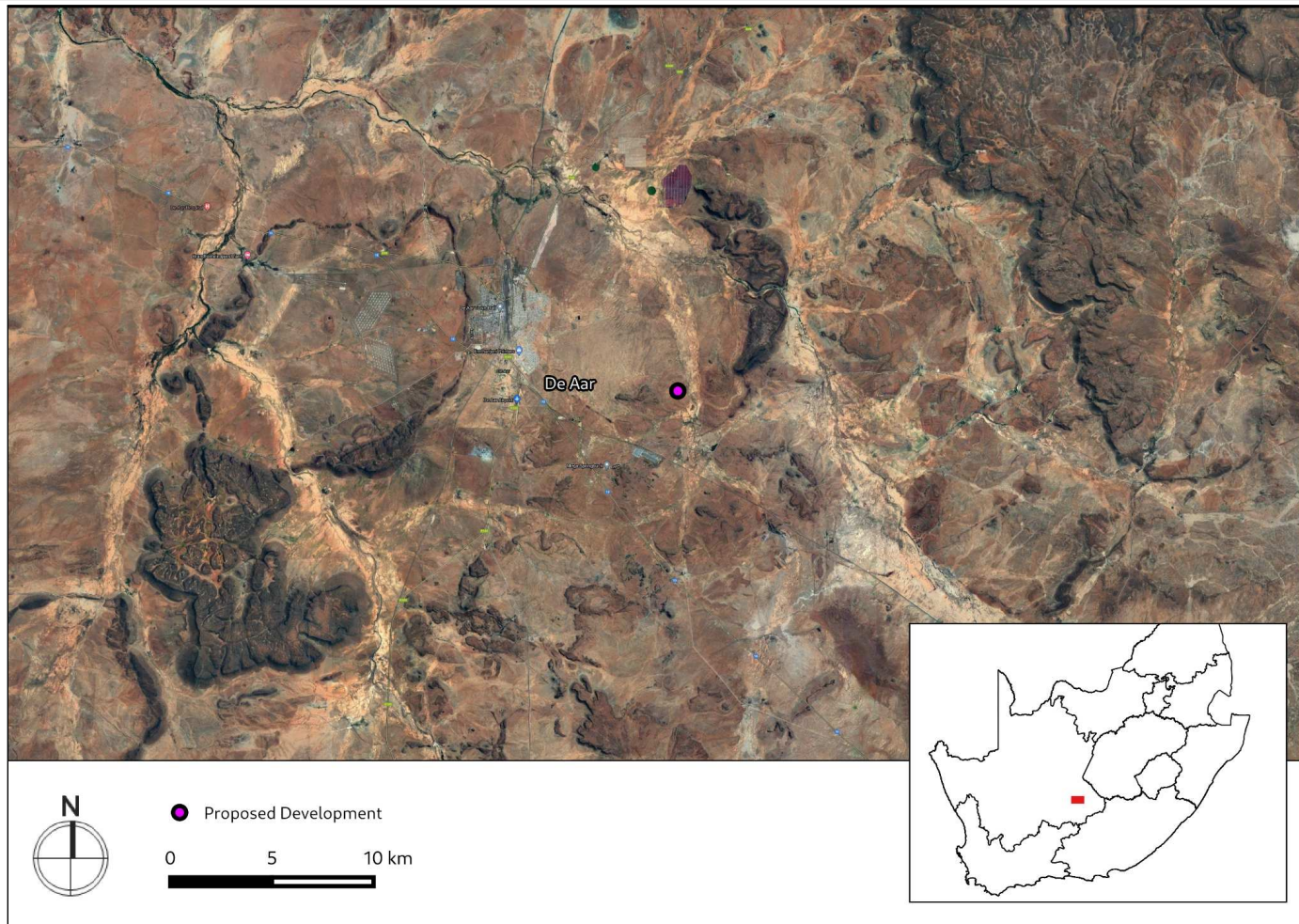




CTS HERITAGE

## HERITAGE SCREENER

CTS Reference Number:	CTS21_231	
SAHRIS Case	192	
Client:	Landscape Dynamics	
Date:	October 2021	
Title:	Proposed Development of the Vetlaagte infrastructure associated with the authorised PV Facilities near De Aar	
CTS Heritage Recommendation:	<p><b>RECOMMENDATION</b></p> <p>Based on the information available, it is not likely that the proposed development will negatively impact on significant archaeological, palaeontological or cultural landscape heritage resources and as such, it is recommended that no further heritage assessments are required in terms of section 38(3) of the NHRA.</p>	

**Figure 1a.** Satellite map indicating the location of the proposed development in the Western Cape Province

CTS Heritage

16 Edison Way, Century City, 7441

Tel: +27 (0)87 073 5739 Email: info@ctsheritage.com Web: www.ctsheritage.com



## 1. Proposed Development Summary

### *Background*

- Vetlaagte Farm consists of 3x PV farms of which Environmental Authorisation was obtained in 2012/14
- The 3x PV farms will each have a Switching Station as well as a grid connection connecting the PV farm to the new MTS
- The new MTS will connect via Loop In Loop Out (LILO) power lines to an existing 400kV power line

### *Project components and areas for assessment*

- 3x grid connections WITH A 200M CORRIDOR
- 3x switching stations (note that the Switching Stations fall within the 200m corridor)
- Main Transmission Substation – note that there are two site alternatives within the assessment area. These alternative sites need to be assessed and other sites recommended should these sites not be suitable.
- LILO lines to connect the MTS to the existing 400kV lines
- The entire assessment area (as per info provided for quoting purposes) needs to be investigated and no go areas demarcated.

### *General*

- The grid connections connecting PV1 and PV2 are running adjacent to each other and to the direct east of an existing 132kV line (the existing line is in red in the map below)
- The PV3 grid connection and switching station are situated within the assessment area.

## 2. Application References

Name of relevant heritage authority(s)	SAHRA
Name of decision making authority(s)	DFFE

## 3. Property Information

Latitude / Longitude	30°41'22.52"S 24° 5'17.76"E
Erf number / Farm number	TBA
Local Municipality	Emthanjeni
District Municipality	Pixley ka Seme
Province	Northern Cape

CTS Heritage

16 Edison Way, Century City, 7441

Tel: +27 (0)87 073 5739 Email: info@ctsheritage.com Web: www.ctsheritage.com



CTS HERITAGE

Current Use	Agriculture with approved PV facility
Current Zoning	Agriculture

## 4. Nature of the Proposed Development

Depth of excavation (m)	TBA
Height of development (m)	TBA
Total Area	TBA

## 5. Category of Development

x	Triggers: Section 38(8) of the National Heritage Resources Act
	Triggers: Section 38(1) of the National Heritage Resources Act
x	1. Construction of a road, wall, powerline, pipeline, canal or other similar form of linear development or barrier over 300m in length.
	2. Construction of a bridge or similar structure exceeding 50m in length.
	3. Any development or activity that will change the character of a site-
x	a) exceeding 5 000m <sup>2</sup> in extent
	b) involving three or more existing erven or subdivisions thereof
	c) involving three or more erven or divisions thereof which have been consolidated within the past five years
	4. Rezoning of a site exceeding 10 000m <sup>2</sup>
	5. Other (state):

## 6. Additional Infrastructure Required for this Development

Additional infrastructure listed under project summary.
---

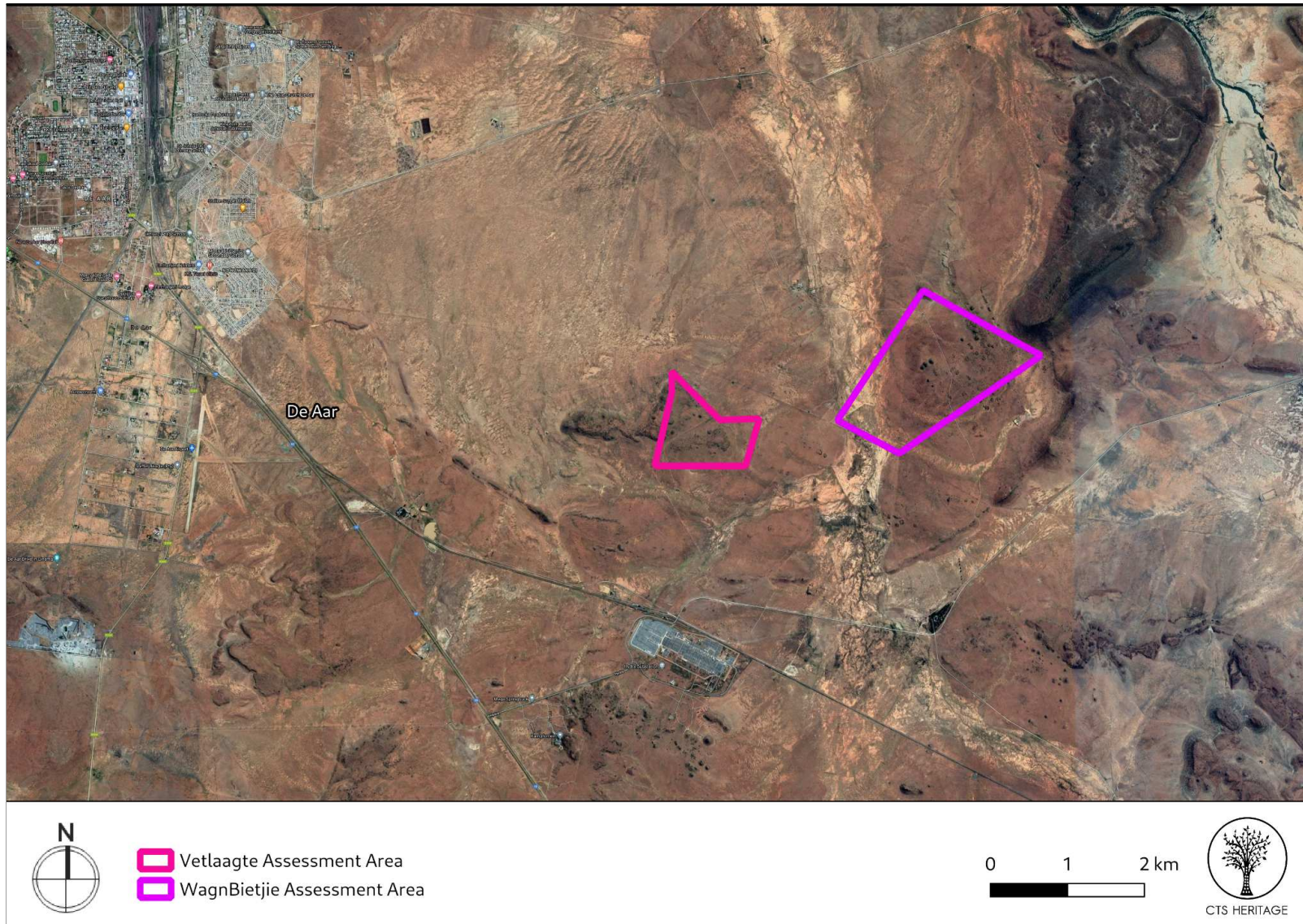
CTS Heritage

16 Edison Way, Century City, 7441

Tel: +27 (0)87 073 5739 Email: info@ctsheritage.com Web: www.ctsheritage.com



## 7. Mapping (please see Appendix 3 and 4 for a full description of our methodology and map legends)

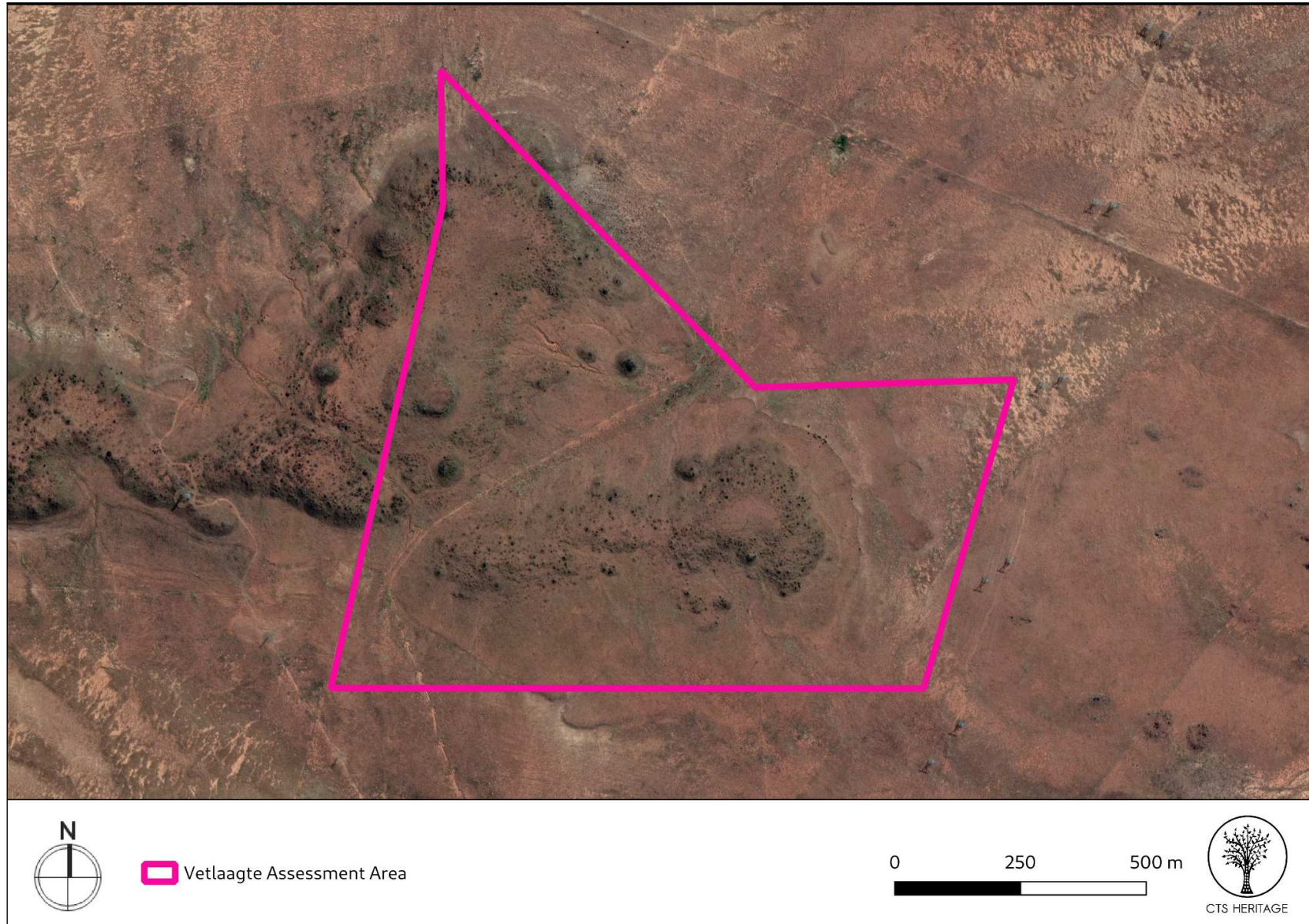


**Figure 1b Overview Map.** Satellite image (2019) indicating the proposed development area at closer range.



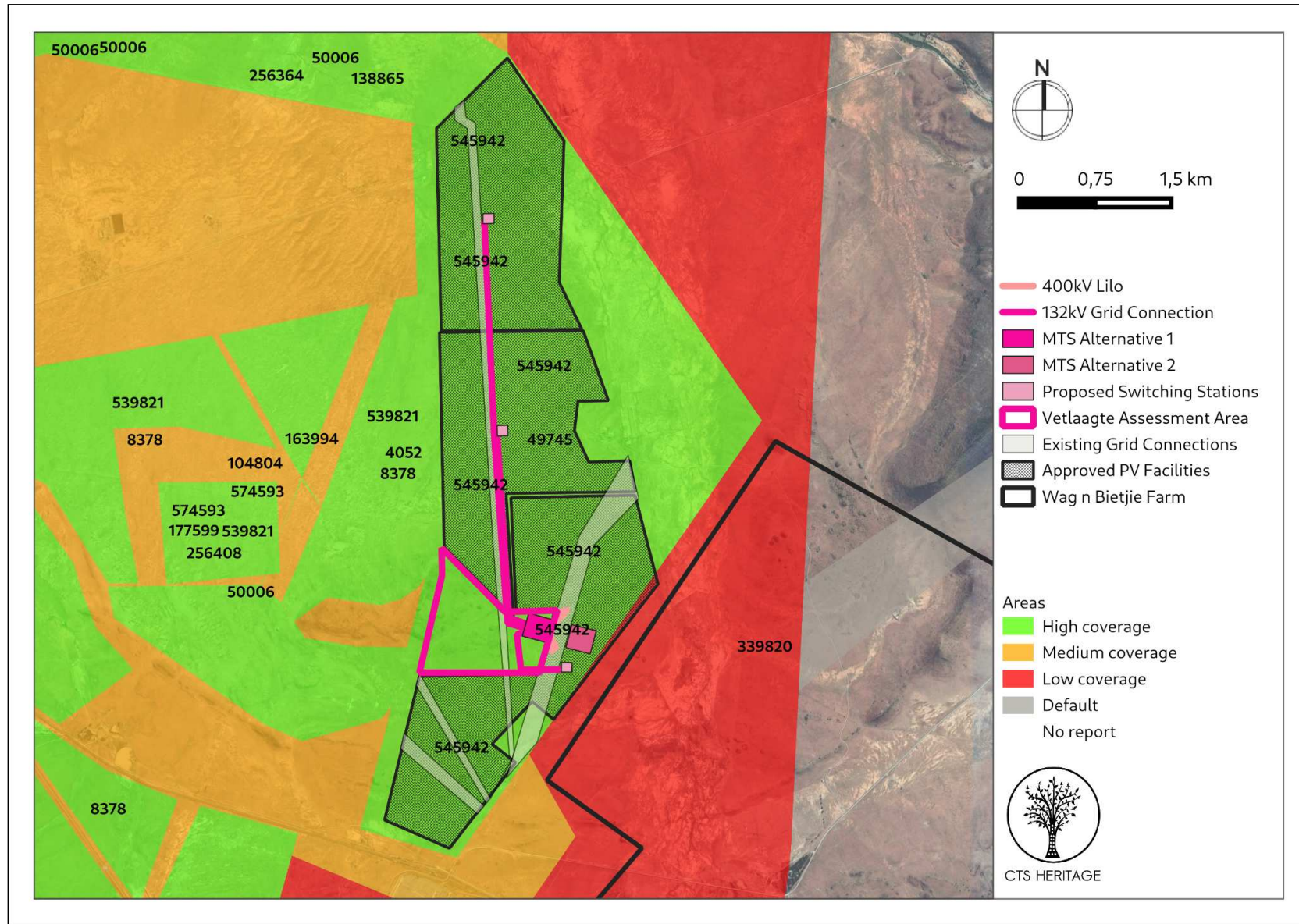






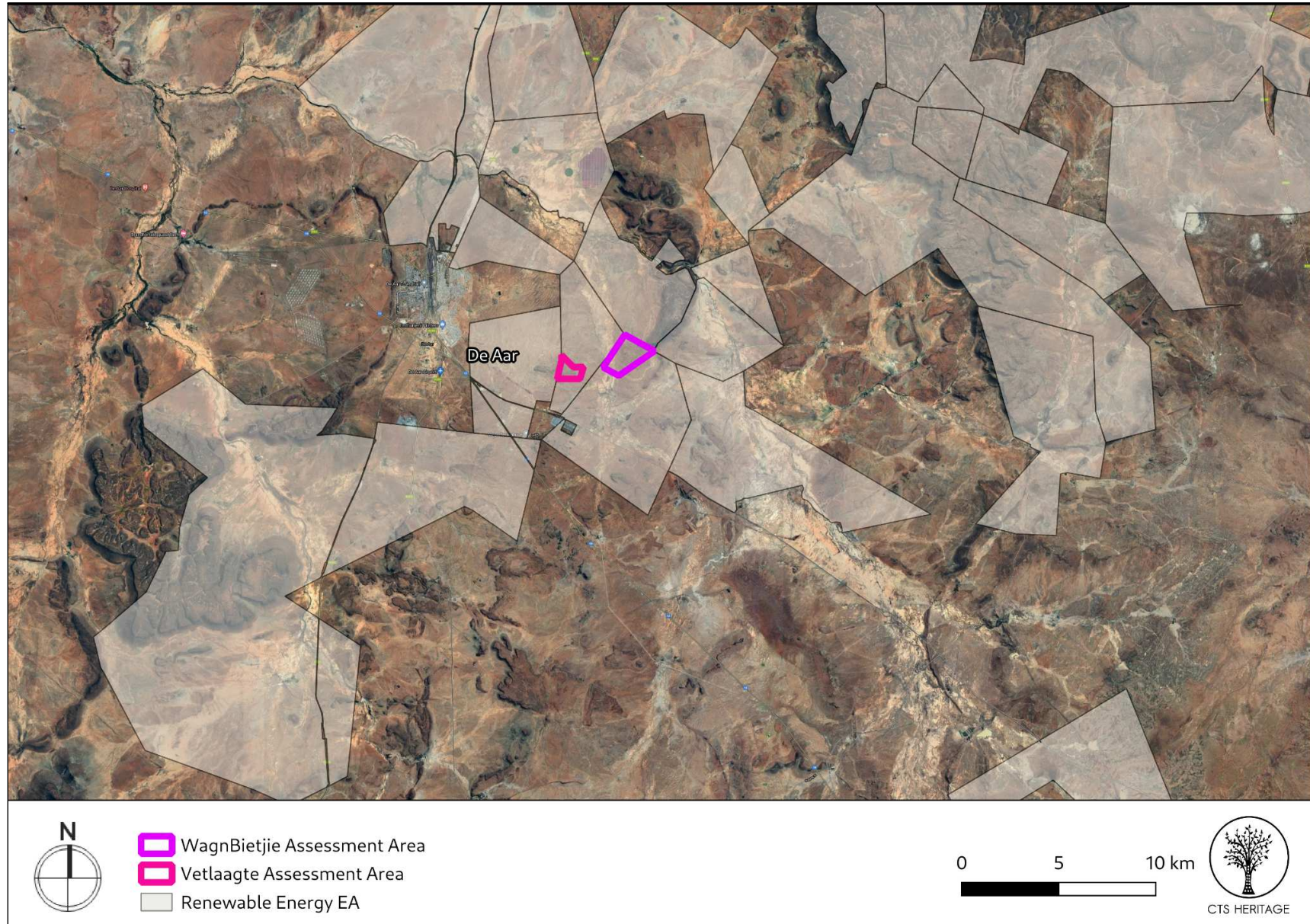
**Figure 1d Overview Map.** Satellite image (2019) indicating the proposed development area at closer range.





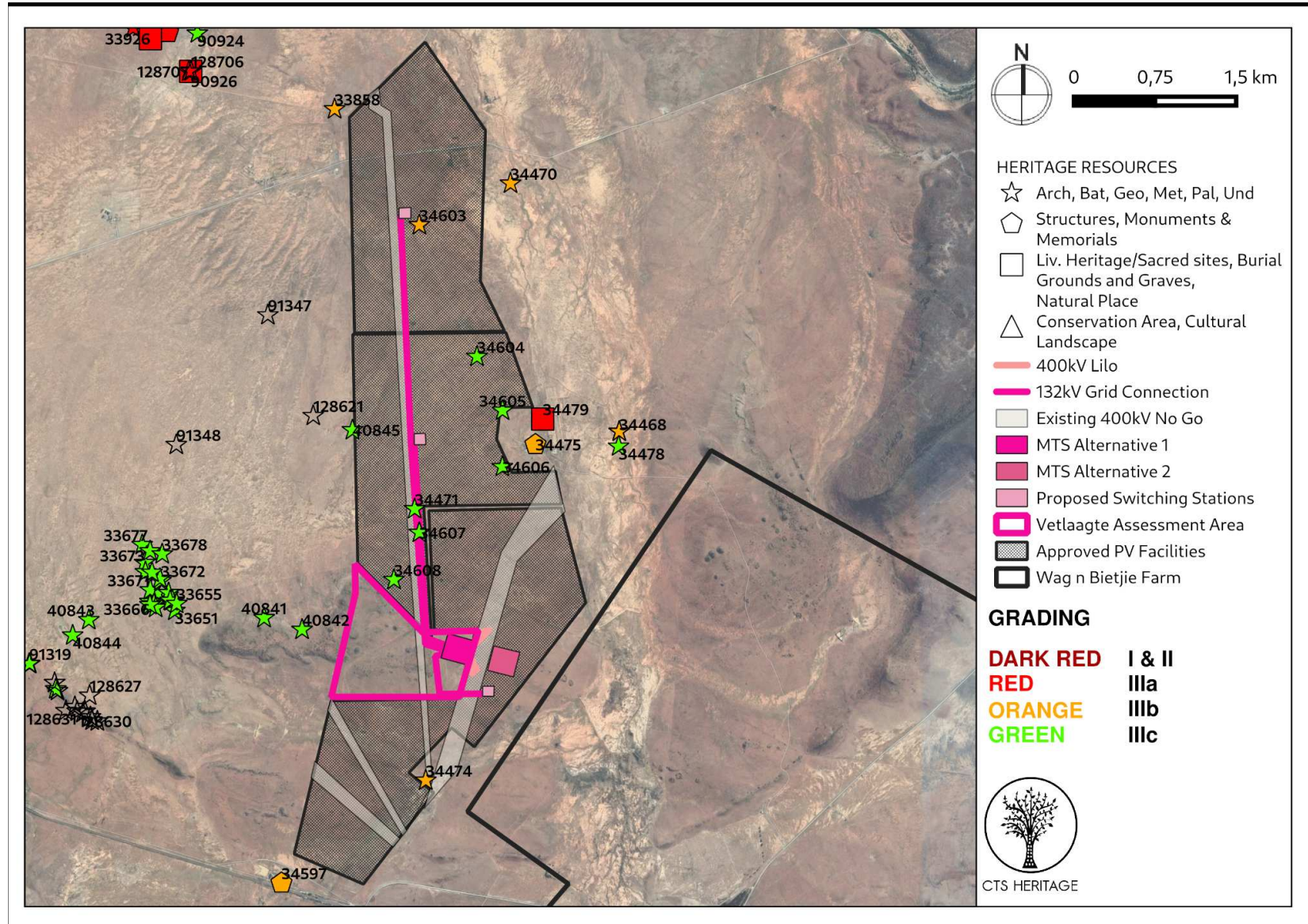
**Figure 2a. Previous HIAs Map.** Previous Heritage Impact Assessments surrounding the proposed development area within 10km, with SAHRIS NIDS indicated. Please see Appendix 2 for a full reference list.





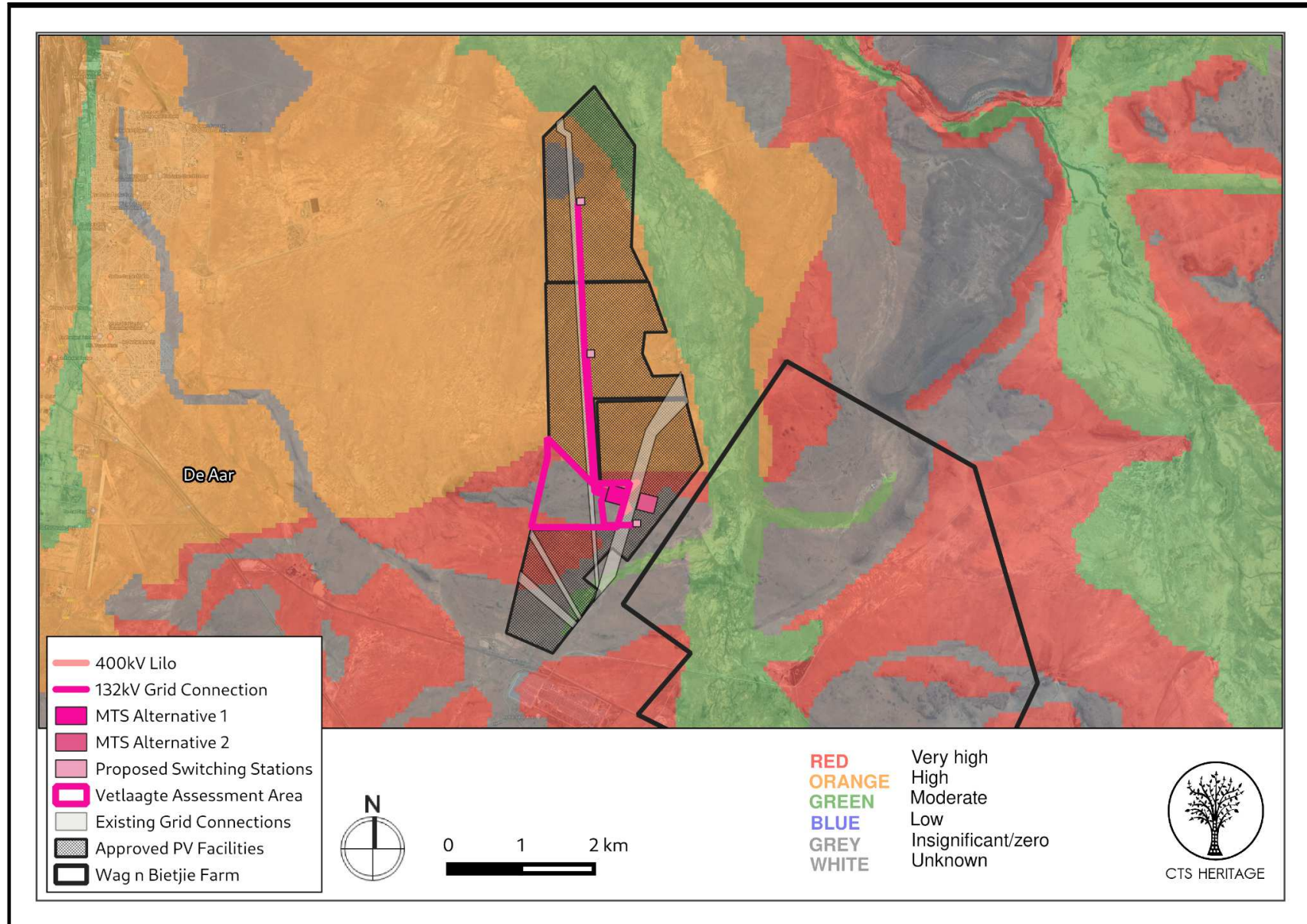
**Figure 2b. Environmental Authorisations.** Previous Environmental Authorisations issued for Renewable Energy Projects in the vicinity of the proposed development





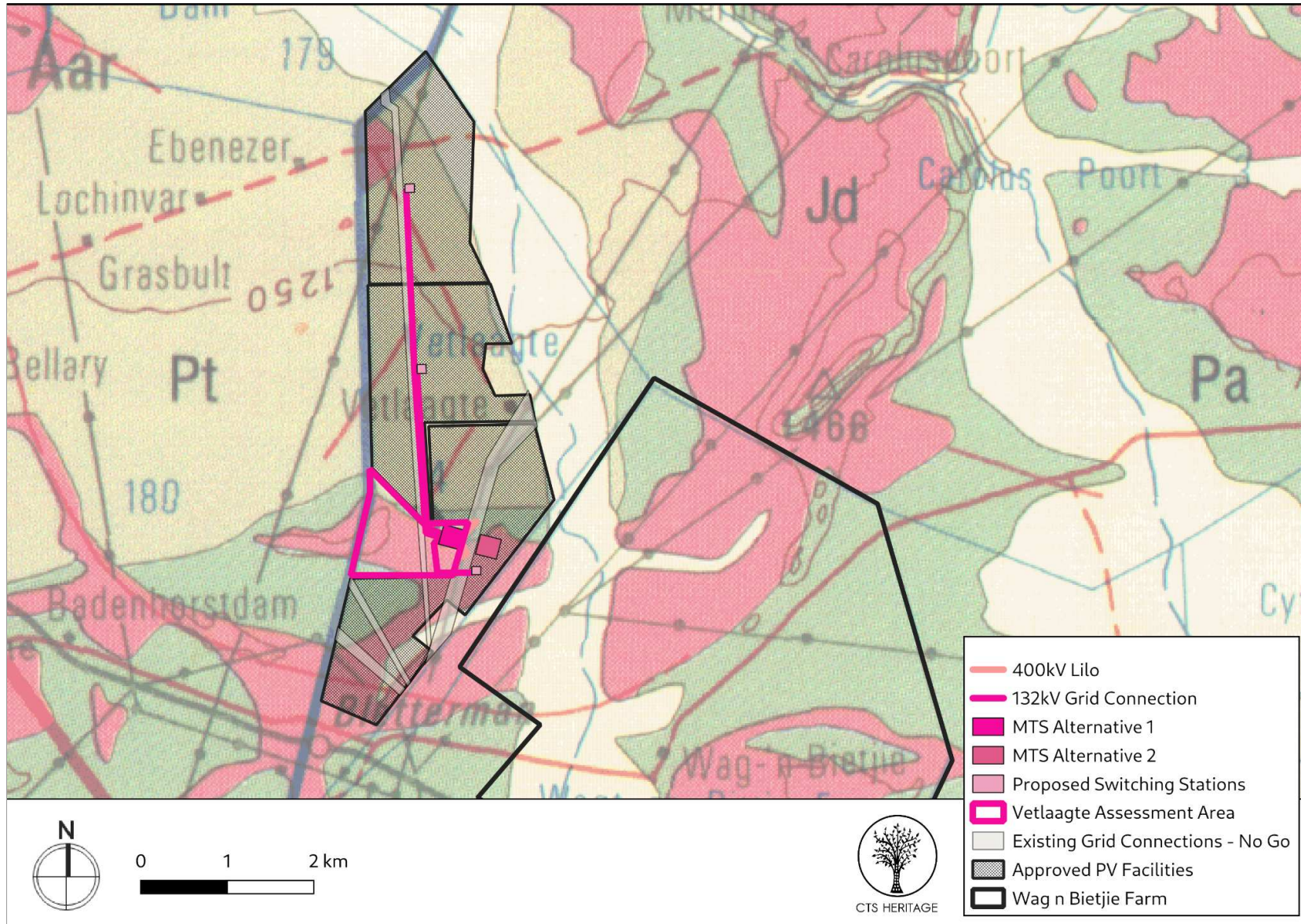
**Figure 3. Heritage Resources Map.** Heritage Resources previously identified in and near the study area, with SAHRIS Site IDs indicated. Please See Appendix 4 for a full description of heritage resource types.





**Figure 4a. Palaeosensitivity Map.** Indicating very high fossil sensitivity underlying the study area. Please See Appendix 3 for a full guide to the legend.





**Figure 4b. Geology Map.** Extracted from the Council for GeoSciences Map 3024 for Colesburg indicating that the development area is underlain by Jd: Jurassic Dolerite, Pt (lighter green): Tierberg Formation of the Eccu Group and Pa (darker green): Adelaide Subgroup of the Beaufort Group





CTS HERITAGE

## 8. Brief Heritage Summary

This application is for the proposed development of supplementary infrastructure associated with the Vetlaagte Solar Energy Facility located West of De Aar in the Northern Cape. De Aar was originally established on the Farm "De Aar." The name means "the artery," a reference to its underground water supply. The Cape Government Railways were founded in 1872, and the route that the government chose for the line to connect the Kimberley diamond fields to Cape Town on the coast, ran directly through De Aar. Because of its central location, the government also selected the location for a junction between this first railway line, and the other Cape railway networks further east, in 1881. In 1899 two brothers who ran a trading store and hotel at the junction, Isaac and Wulf Friedlander, purchased the farm of De Aar. Following the Anglo Boer War, the Friedlander brothers surveyed the land for the establishment of a town. The municipality was created a year later in 1900.

The area proposed for development has been previously approved for the establishment of the Vetlaagte Solar Energy Facility in 2012 (SAHRIS Case ID 192). As such, the development area has been subject to a previous heritage impact assessment process (Kruger, 2012 SAHRIS ID 49745) and a palaeontology assessment (Almond, 2012 SAHRIS ID 49843). Both of these reports are referred to extensively below.

Kruger (2012) describes the development area as "characterised by flat undulating Karoo vegetation comprised out of relatively sparse scrub and grasses, with dolerite hills in the surrounding landscape. Large portions of the land is currently devoted to livestock farming but a number of solar energy facilities are to be constructed on farms around De Aar. Shallow soils covers a combination of calcrete, shale and dolerite substrates, and large sections in the landscape are exposed to sheet erosion, specifically along low lying areas and drainage lines. Dolerite and sandstone is present, while exotic rocks occur in the gravel of the Orange River bed and terraces. These provided suitable material for stone tool production during the Earlier, Middle and Later Stone Ages. "

### Archaeology

As part of the 2012 process for approval of the Vetlaagte Solar Energy Facility, Kruger conducted a detailed Heritage Impact Assessment of the area proposed for development. According to Kruger (2012), "During the survey, widespread Middle Stone Age (MSA) material, including characteristic formal MSA stone tools such as points, blades and scrapers were documented in the survey area along a north-south oriented drainage on the eastern periphery of the property. The lithic remains occur in three large scatters and, almost without exception, in low lying areas along non-perennial drainage lines and wetland areas where precipitation and groundwater have exposed the stone tools, originally deposited on a decomposed calcrete rock layer approximately 30cm sub surface. Preliminary examinations of some of the lithics indicated that a number of flakes displayed faceted platforms, characteristic of the MSA."

Kruger (2012) also documented historical period remains, "specifically the old Vetlaagte homestead with restored farmhouse, outbuildings, midden and labourers quarters, as well as a dilapidated dam wall constructed in the drainage line east of the farmstead are present on the property. The date of construction of the farm house is denoted by a year count ("1930") on the front gable of the structure. The entire farmstead is situated in an area excluded from the solar farm development. A small family graveyard, associated with the farmstead at Vetlaagte, also occurs in the exclusion zone about 100m north of the farm house."

All of the heritage resources identified by Kruger (2012) have been mapped relative to the proposed development in Figure 3. No impact to any known heritage resources are anticipated. None of the infrastructure proposed as part of this development application are located near the archaeologically sensitive drainage located along the eastern periphery of the property. The sites listed in the table below are located within the development footprint however direct impact is only anticipated to Site Vetlaagte 03 (SAHRIS ID 34471) as it is located within the proposed 132kV alignment. As per Kruger (2012), it is recommended that the site be properly recorded prior to construction.

CTS Heritage

16 Edison Way, Century City, 7441

Tel: +27 (0)87 073 5739 Email: info@ctsheritage.com Web: www.ctsheritage.com





CTS HERITAGE

SAHRIS NID	Site No.	Site Name	Description	Grading	Latitude	Longitude	Mitigation
34479	VLG007	VETLAAGTE 7	Burial Grounds & Graves - A small family graveyard, associated with the farmstead at Vetlaagte. It contains a single grave of a former farm owner who passed away in 1933.	Grade IIIa	-30,669722	24,103228	No impact anticipated
34470	VLG002	Vetlaagte 2	Artefacts - High density MSA artefact and debris scatters in drainage line at Vetlaagte.	Grade IIIb	-30,65015	24,100117	No impact anticipated
34471	VLG003	VETLAAGTE 3	Artefacts - MSA, single blades and scrapers occur along with flakes and debris. The site integrity has been compromised by the mixing of artefacts caused by riverbank erosion	Grade IIIc	-30,677206	24,090869	Located within the proposed 132kV grid connection. Documentation of sites.
34474	VLG004	VETLAAGTE 4	Artefacts - High density MSA Lithics exposed as a result of calcrete erosion.	Grade IIIb	-30,699747	24,091936	No impact anticipated
34475	VLG005	VETLAAGTE 5	Building - Historical period remains, specifically the old Vetlaagte homestead with restored farmhouse, outbuildings, midden and labourers quarters. The date of construction of the farm house is denoted by a year count ("1930") on the front gable of the structure.	Grade IIIb	-30,671839	24,102522	No impact anticipated

### Palaeontology

According to the SAHRIS Palaeosensitivity Map (Figure 4a), the area proposed for development is underlain by sediments of high and very high paleontological sensitivity. According to the extract from the Council for GeoSciences Map 3024 for Colesburg, the development area is underlain by Jurassic Dolerite, the Tierberg Formation of the Eccca Group and the Adelaide Subgroup of the Beaufort Group.

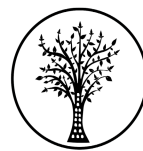
As part of the process completed in 2012, Almond completed a field-based palaeontological assessment of the area proposed for development in this application. Almond (2012) found that "The potentially fossiliferous sediments of the Late Palaeozoic Karoo Supergroup (Ecca and Lower Beaufort Groups) that underlie the study area are almost entirely mantled in a thick layer of superficial deposits of probable Pleistocene to Recent age. These include various soils, gravels and – at least in some areas - a well-developed calcrete hardpan. The upper Ecca Group bedrocks in the northern portion of the study area contain locally abundant fossil wood (of palaeontological interest for dating and palaeoenvironmental studies), as well as low diversity non-marine trace fossil assemblages typical of the Waterford Formation, rather than the Tierberg Formation as mapped. No vertebrate fossils and only scattered woody plant impressions of the Permian Glossopteris Flora were observed within the Lower Beaufort Group rocks that are very poorly exposed in the southern portion of the Vetlaagte study area. Trace fossils, silicified wood and rare vertebrate remains (therapsids, parareptiles) of the Middle Permian Pristerognathus Assemblage Zone have recently been recorded from this succession in the De Aar region (Almond 2010b). Extensive dolerite sills and dykes of the Early Jurassic Karoo Dolerite Suite intruding the Karoo Supergroup sediments are entirely unfossiliferous, as are rare intrusive kimberlite pipe rocks of Cretaceous

CTS Heritage

16 Edison Way, Century City, 7441

Tel: +27 (0)87 073 5739 Email: info@ctsheritage.com Web: www.ctsheritage.com





CTS HERITAGE

age. The diverse superficial deposits within the three study areas (e.g. soils, gravels, alluvium, calcrete hardpans) are of low palaeontological sensitivity as a whole . Abundant fragments of reworked fossil wood material of Eccca provenance occur widely within subsurface and surface gravels overlying the Eccca Group outcrop area.” The observations made by Almond (2012) are mapped relative to the proposed development in Figure 3. These observations and other known palaeontological resources located within the area proposed for development are recorded in the table below.

SAHRIS NID	Site No.	Site Name	Description	Grading	Latitude	Longitude	Mitigation
33858	DPLE8	DU PLESSIS 8	Palaeontological - Larger fragments of silicified wood in surface gravels, bioturbated Eccca sediments, ferruginous concretions.	Grade IIIb	-30,643972	24,083139	None required
34603	VLG008	Vetlaagte 008	Palaeontological - Small fragments of petrified wood in surface gravels	Grade IIIb	-30,6536	24,091317	None required
34604	VLG009	Vetlaagte 009	Palaeontological - Small fragments of petrified wood in surface gravels	Grade IIIc	-30,66455	24,096883	None required
34605	VLG010	Vetlaagte 010	Palaeontological - Small fragments of petrified wood in surface gravels. Calcrete hard pan beneath surface soils.	Grade IIIc	-30,669017	24,09935	None required
34606	VLG011	Vetlaagte 011	Palaeontological - Large ferruginous carbonate nodules within Eccca sandstones, plus fossil wood fragments	Grade IIIc	-30,6737	24,099333	None required
34607	VLG012	Vetlaagte 012	Palaeontological - Thin tempestite sandstones of Waterford Formation with moderately diverse trace fossil assemblages	Grade IIIc	-30,679167	24,091317	None required
34608	VLG013	Vetlaagte 013	Palaeontological - Baked Beaufort Group mudrocks with transported fossil plant remains	Grade IIIc	-30,683083	24,088867	None required
40845	DAR2011/034	BADENHORST DAM FARM 2011/034	Palaeontological - Surface gravels, including fragmentary ferruginous carbonate concretions	Grade IIIc	-30,670639	24,084861	None required

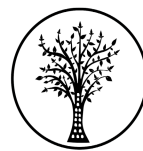
Almond (2012) concludes that “The construction of new access roads and transmission lines in this region are likewise considered to be of low significance as far as fossil heritage is concerned... In view of the overall low significance of the proposed development on palaeontological heritage resources, it is concluded that no further palaeontological heritage studies or specialist mitigation are required for these small PV projects, pending the exposure of any substantial fossil remains (e.g. vertebrate bones and teeth, large blocks of petrified wood) during the construction phase.”

CTS Heritage

16 Edison Way, Century City, 7441

Tel: +27 (0)87 073 5739 Email: info@ctsheritage.com Web: www.ctsheritage.com





CTS HERITAGE

#### **RECOMMENDATION**

**Based on the information available, it is not likely that the proposed development will negatively impact on significant archaeological, palaeontological or cultural landscape heritage resources and as such, it is recommended that no further heritage assessments are required in terms of section 38(3) of the NHRA.**

**CTS Heritage**

16 Edison Way, Century City, 7441

**Tel:** +27 (0)87 073 5739 **Email:** [info@ctsheritage.com](mailto:info@ctsheritage.com) **Web:** [www.ctsheritage.com](http://www.ctsheritage.com)



CTS HERITAGE

## APPENDIX 1

### List of built environment and archaeological heritage resources identified within 15km of the development area

Site ID	Site/Observation no.	Full Site Name/Description	Site Type	Grading
33933	DAR2011/004	BADENHORST DAM FARM 2011/004	Artefacts	Grade IIIb
33947	DAR2011/010	BADENHORST DAM FARM 2011/010	Stone walling	Grade IIIb
33955	DAR2011/014	BADENHORST DAM FARM 2011/014	Stone walling	Grade IIIb
33887	RNSB244	Renosterburg244	Palaeontological	Grade IIIb
33891	RNSB245	Renosterburg245	Palaeontological	Grade IIIb
34597	TBS003	Taaiboschfontein 003	Archaeological, Transport infrastructure	Grade IIIb
34598	TBS002	Taaiboschfontein 002	Structures	Grade IIIb
34603	VLG008	Vetlaagte 008	Palaeontological	Grade IIIb
33929	DAR2011/001	BADENHORST DAM FARM 2011/001	Stone walling	Grade IIIc
33931	DAR2011/002	BADENHORST DAM FARM 2011/002	Artefacts	Grade IIIc
33932	DAR2011/003	BADENHORST DAM FARM 2011/003	Artefacts	Grade IIIc
33934	DAR2011/005	BADENHORST DAM FARM 2011/005	Stone walling, Artefacts	Grade IIIc
33937	DAR2011/006	BADENHORST DAM FARM 2011/006	Stone walling	Grade IIIc
33941	DAR2011/007	BADENHORST DAM FARM 2011/007	Archaeological	Grade IIIc
33942	DAR2011/008	BADENHORST DAM FARM 2011/008	Stone walling, Artefacts	Grade IIIc
33943	DAR2011/009	BADENHORST DAM FARM 2011/009	Stone walling	Grade IIIc

CTS Heritage

16 Edison Way, Century City, 7441

Tel: +27 (0)87 073 5739 Email: info@ctsheritage.com Web: www.ctsheritage.com





CTS HERITAGE

33950	DAR2011/011	BADENHORST DAM FARM 2011/011	Stone walling	Grade IIIc
33949	DAR2011/012	BADENHORST DAM FARM 2011/012	Stone walling	Grade IIIc
33954	DAR2011/013	BADENHORST DAM FARM 2011/013	Stone walling	Grade IIIc
33956	DAR2011/015	BADENHORST DAM FARM 2011/015	Stone walling	Grade IIIc
33957	DAR2011/016	BADENHORST DAM FARM 2011/016	Stone walling	Grade IIIc
33958	DAR2011/017	BADENHORST DAM FARM 2011/017	Stone walling	Grade IIIc
33951	DAR2011/018	BADENHORST DAM FARM 2011/018	Artefacts	Grade IIIc
33952	DAR2011/019	BADENHORST DAM FARM 2011/019	Artefacts	Grade IIIc
33953	DAR2011/020	BADENHORST DAM FARM 2011/020	Artefacts	Grade IIIc
33948	DAR2011/021	BADENHORST DAM FARM 2011/021	Stone walling	Grade IIIc
33946	DAR2011/022	BADENHORST DAM FARM 2011/022	Archaeological	Grade IIIc
33945	DAR2011/023	BADENHORST DAM FARM 2011/023	Stone walling	Grade IIIc
33944	DAR2011/024	BADENHORST DAM FARM 2011/024	Building	Grade IIIc
33667	DASE13	De Aar South East 13	Artefacts	Grade IIIc
33668	DASE14	De Aar South East 14	Artefacts	Grade IIIc
33669	DASE15	De Aar South East 15	Artefacts	Grade IIIc
33670	DASE16	De Aar South East 16	Artefacts	Grade IIIc
33651	DASE1	De Aar South East 1	Artefacts	Grade IIIc
33666	DASE12	De Aar South East 12	Artefacts	Grade IIIc

CTS Heritage

16 Edison Way, Century City, 7441

Tel: +27 (0)87 073 5739 Email: [info@ctsheritage.com](mailto:info@ctsheritage.com) Web: [www.ctsheritage.com](http://www.ctsheritage.com)



CTS HERITAGE

33663	DASE10	De Aar South East 10	Artefacts	Grade IIIc
33671	DASE17	De Aar South East 17	Artefacts	Grade IIIc
33672	DASE18	De Aar South East 18	Artefacts	Grade IIIc
33673	DASE19	De Aar South East 19	Artefacts	Grade IIIc
33674	DASE20	De Aar South East 20	Artefacts	Grade IIIc
33675	DASE21	De Aar South East 21	Artefacts	Grade IIIc
33676	DASE22	De Aar South East 22	Artefacts	Grade IIIc
33677	DASE25	De Aar South East 25	Artefacts	Grade IIIc
33679	DASE26	De Aar South East 26	Artefacts	Grade IIIc
33678	DASE27	De Aar South East 26	Artefacts	Grade IIIc
33653	DASE4	De Aar South East 4	Artefacts	Grade IIIc
33661	DASE8	De Aar South East 8	Artefacts	Grade IIIc
33664	DASE9	De Aar South East 9	Artefacts	Grade IIIc
33662	DASE7	De Aar South East 7	Artefacts	Grade IIIc
33655	DASE6	De Aar South East 6	Artefacts	Grade IIIc
33652	DASE2	De Aar South East 2	Artefacts	Grade IIIc
33654	DASE5	De Aar South East 5	Artefacts	Grade IIIc
37209	TRANS-ECNC013	Transnet - Eastern Cape, Northern Cape 013	Ruin > 100 years, Artefacts	Grade IIIc
34468	VLG001	VETLAAGTE 1	Artefacts	Grade IIIb

CTS Heritage

16 Edison Way, Century City, 7441

Tel: +27 (0)87 073 5739 Email: info@ctsheritage.com Web: www.ctsheritage.com





CTS HERITAGE

34470	VLG002	Vetlaagte 2	Artefacts	Grade IIIb
34471	VLG003	VETLAAGTE 3	Artefacts	Grade IIIc
34474	VLG004	VETLAAGTE 4	Artefacts	Grade IIIb
34475	VLG005	VETLAAGTE 5	Building	Grade IIIb
34478	VLG006	VETLAAGTE 6	Stone walling	Grade IIIc
34604	VLG009	Vetlaagte 009	Palaeontological	Grade IIIc
34605	VLG010	Vetlaagte 010	Palaeontological	Grade IIIc
34606	VLG011	Vetlaagte 011	Palaeontological	Grade IIIc
34607	VLG012	Vetlaagte 012	Palaeontological	Grade IIIc
34608	VLG013	Vetlaagte 013	Palaeontological	Grade IIIc
40830	DAR2011/025	BADENHORST DAM FARM 2011/025	Palaeontological	Grade IIIc
40831	DAR2011/026	BADENHORST DAM FARM 2011/026	Palaeontological	Grade IIIc
40832	DAR2011/027	BADENHORST DAM FARM 2011/027	Palaeontological	Grade IIIc
40833	DAR2011/028	BADENHORST DAM FARM 2011/028	Palaeontological	Grade IIIc
40834	DAR2011/029	BADENHORST DAM FARM 2011/029	Palaeontological	Grade IIIc
40836	DAR2011/031	BADENHORST DAM FARM 2011/031	Palaeontological	Grade IIIc
40837	DAR2011/030	BADENHORST DAM FARM 2011/030	Palaeontological	Grade IIIc
40838	DAR2011/032	BADENHORST DAM FARM 2011/032	Palaeontological	Grade IIIc
40839	DAR2011/033	BADENHORST DAM FARM 2011/033	Palaeontological	Grade IIIc

CTS Heritage

16 Edison Way, Century City, 7441

Tel: +27 (0)87 073 5739 Email: [info@ctsheritage.com](mailto:info@ctsheritage.com) Web: [www.ctsheritage.com](http://www.ctsheritage.com)



CTS HERITAGE

40841	DAR2011/035	BADENHORST DAM FARM 2011/035	Palaeontological	Grade IIIc
40842	DAR2011/036	BADENHORST DAM FARM 2011/036	Palaeontological	Grade IIIc
40843	DAR2011/037	BADENHORST DAM FARM 2011/037	Palaeontological	Grade IIIc
40844	DAR2011/038	BADENHORST DAM FARM 2011/038	Palaeontological	Grade IIIc
40845	DAR2011/034	BADENHORST DAM FARM 2011/034	Palaeontological	Grade IIIc
34479	VLG007	VETLAAGTE 7	Burial Grounds & Graves	Grade IIIa
91325	BADE007	Badenhorst PV3/007	Artefacts	Grade IIIc
91326	BADE008	Badenhorst PV3/008	Structures	Grade IIIc
91319	BADE001	Badenhorst PV3/001	Stone walling	Grade IIIc
91320	BADE002	Badenhorst PV3/002	Artefacts	Grade IIIc
91321	BADE003	Badenhorst PV3/003	Artefacts	Grade IIIc
91322	BADE004	Badenhorst PV3/004	Artefacts	Grade IIIc
91323	BADE005	Badenhorst PV3/005	Artefacts	Grade IIIc
91324	BADE006	Badenhorst PV3/006	Artefacts	Grade IIIb
91328	BADE010	Badenhorst PV3/010	Stone walling	Grade IIIc
91329	BADE011	Badenhorst PV3/011	Structures	Grade IIIc
91330	BADE012	Badenhorst PV3/012	Structures	Grade IIIb
91331	BADE013	Badenhorst PV3/013	Structures	Grade IIIb
91333	BADE015	Badenhorst PV3/015	Artefacts	Grade IIIc

CTS Heritage

16 Edison Way, Century City, 7441

Tel: +27 (0)87 073 5739 Email: [info@ctsheritage.com](mailto:info@ctsheritage.com) Web: [www.ctsheritage.com](http://www.ctsheritage.com)





CTS HERITAGE

91334	BADE016	Badenhorst PV3/016	Artefacts	Grade IIIc
91335	BADE017	Badenhorst PV3/017	Structures	Grade IIIc
91336	BADE018	Badenhorst PV3/018	Burial Grounds & Graves	Grade IIIc
91337	BADE019	Badenhorst PV3/019	Structures	Grade IIIc
91338	BADE020	Badenhorst PV3/020	Structures	Grade IIIc
91339	BADE021	Badenhorst PV3/021	Artefacts	
91341	BADE022	Badenhorst PV3/022	Artefacts	
91342	BADE023	Badenhorst PV3/023	Artefacts	
91343	BADE024	Badenhorst PV3/024	Artefacts	
91344	BADE025	Badenhorst PV3/025	Artefacts	
91345	BADE026	Badenhorst PV3/026	Artefacts	
91346	BADE027	Badenhorst PV3/027	Artefacts	
91347	BADE028	Badenhorst PV3/028	Artefacts	
91348	BADE029	Badenhorst PV3/029	Artefacts	
91349	BADE030	Badenhorst PV3/030	Artefacts	
91332	BADE014	Badenhorst PV3/014	Structures	Grade IIIb
132051	DAR2013/001	BADENHORST DAM FARM	Stone walling	Grade IIIb
128603	3024CA/SEF/2012/SA01	Solar Energy Facility- site SA01	Artefacts	
128614	3024CA/SEFFDA180/2013/DAR2	Solar Energy Facilities on the Farm De Aar 180- Site	Building	Ungraded

CTS Heritage

16 Edison Way, Century City, 7441

Tel: +27 (0)87 073 5739 Email: info@ctsheritage.com Web: www.ctsheritage.com



CTS HERITAGE

	013/001	DAR2013/001		
128615	3024CA/SEFFDA180/2013/DAR2 013/002	Solar Energy Facilities on the Farm De Aar 180- Site DAR2013/002	Artefacts	Ungraded
128616	3024CA/SEFFDA180/2013/DAR2 013/003	Solar Energy Facilities on the Farm De Aar 180- Site DAR2013/003	Artefacts	Ungraded
128618	3024CA/SEFFDA180/2013/DAR2 013/004	Solar Energy Facilities on the Farm De Aar 180- Site DAR2013/004	Artefacts	Ungraded
128619	3024CA/SEFFDA180/2013/DAR2 013/005	Solar Energy Facilities on the Farm De Aar 180- Site DAR2013/005	Artefacts	Ungraded
128620	3024CA/SEFFDA180/2013/DAR2 013/013	Solar Energy Facilities on the Farm De Aar 180- Site DAR2013/013	Artefacts	Ungraded
128621	3024CA/SEFFDA180/2013/DAR2 013/014	Solar Energy Facilities on the Farm De Aar 180- Site DAR2013/014	Artefacts	Ungraded
128623	3024CA/SEFFDA180/2013/DAR2 013/015	Solar Energy Facilities on the Farm De Aar 180- Site DAR2013/015	Artefacts	Ungraded
128624	3024CA/SEFFDA180/2013/DAR2 013/016	Solar Energy Facilities on the Farm De Aar 180- Site DAR2013/016	Artefacts	Ungraded
128627	3024CA/SEFFDA180/2013/DAR2 013/017	Solar Energy Facilities on the Farm De Aar 180- Site DAR2013/017	Artefacts	Ungraded
128628	3024CA/SEFFDA180/2013/DAR2 013/018	Solar Energy Facilities on the Farm De Aar 180- Site DAR2013/018	Artefacts	Ungraded
128629	3024CA/SEFFDA180/2013/DAR2 013/019	Solar Energy Facilities on the Farm De Aar 180- Site DAR2013/019	Artefacts	Ungraded
128630	3024CA/SEFFDA180/2013/DAR2	Solar Energy Facilities on the Farm De Aar 180- Site	Artefacts	Ungraded

CTS Heritage

16 Edison Way, Century City, 7441

Tel: +27 (0)87 073 5739 Email: [info@ctsheritage.com](mailto:info@ctsheritage.com) Web: [www.ctsheritage.com](http://www.ctsheritage.com)





CTS HERITAGE

	013/020	DAR2013/020		
128631	3024CA/SEFFDA180/2013/DAR2 013/021	Solar Energy Facilities on the Farm De Aar 180- Site DAR2013/021	Artefacts	Ungraded
128632	3024CA/SEFFDA180/2013/DAR2 013/022	Solar Energy Facilities on the Farm De Aar 180- Site DAR2013/022	Artefacts	Ungraded
128633	3024CA/SEFFDA180/2013/DAR2 013/023	Solar Energy Facilities on the Farm De Aar 180- Site DAR2013/023	Artefacts	Ungraded
128634	3024CA/SEFFDA180/2013/DAR2 013/024	Solar Energy Facilities on the Farm De Aar 180- Site DAR2013/024	Building	Ungraded
128635	3024CA/SEFFDA180/2013/DAR2 013/006	Solar Energy Facilities on the Farm De Aar 180- Site DAR2013/006	Artefacts	Ungraded
128636	3024CA/SEFFDA180/2013/DAR2 013/007	Solar Energy Facilities on the Farm De Aar 180- Site DAR2013/007	Artefacts	Ungraded
128637	3024CA/SEFFDA180/2013/DAR2 013/008	Solar Energy Facilities on the Farm De Aar 180- Site DAR2013/008	Stone walling	Ungraded
128638	3024CA/SEFFDA180/2013/DAR2 013/009	Solar Energy Facilities on the Farm De Aar 180- Site DAR2013/009	Stone walling	Ungraded
128639	3024CA/SEFFDA180/2013/DAR2 013/010	Solar Energy Facilities on the Farm De Aar 180- Site DAR2013/010	Artefacts	Ungraded
128640	3024CA/SEFFDA180/2013/DAR2 013/011	Solar Energy Facilities on the Farm De Aar 180- Site DAR2013/011	Artefacts	Ungraded
128641	3024CA/SEFFDA180/2013/DAR2 013/012	Solar Energy Facilities on the Farm De Aar 180- Site DAR2013/012	Artefacts	Ungraded
128642	3024CA/SEFFDA180/2013/DAR2	Solar Energy Facilities on the Farm De Aar 180- Site	Artefacts	Ungraded

CTS Heritage

16 Edison Way, Century City, 7441

Tel: +27 (0)87 073 5739 Email: [info@ctsheritage.com](mailto:info@ctsheritage.com) Web: [www.ctsheritage.com](http://www.ctsheritage.com)



CTS HERITAGE

	011/001	DAR2011/001		
128643	3024CA/SEFFDA180/2013/DAR2 011/002	Solar Energy Facilities on the Farm De Aar 180- Site DAR2011/002	Artefacts	Ungraded
128644	3024CA/SEFFDA180/2013/DAR2 011/003	Solar Energy Facilities on the Farm De Aar 180- Site DAR2011/003	Artefacts	Ungraded
128645	3024CA/SEFFDA180/2013/DAR2 011/004	Solar Energy Facilities on the Farm De Aar 180- Site DAR2011/004	Artefacts	Ungraded
128646	3024CA/SEFFDA180/2013/DAR2 011/005	Solar Energy Facilities on the Farm De Aar 180- Site DAR2011/005	Artefacts	Ungraded
128647	3024CA/SEFFDA180/2013/DAR2 011/006	Solar Energy Facilities on the Farm De Aar 180- Site DAR2011/006	Artefacts	
128648	3024CA/SEFFDA180/2013/DAR2 011/007	Solar Energy Facilities on the Farm De Aar 180- Site DAR2011/007	Artefacts	Ungraded
128650	3024CA/SEFFDA180/2013/DAR2 011/008	Solar Energy Facilities on the Farm De Aar 180- Site DAR2011/008	Artefacts	Ungraded
128652	3024CA/SEFFDA180/2013/DAR2 011/009	Solar Energy Facilities on the Farm De Aar 180- Site DAR2011/009	Artefacts	Ungraded
128653	3024CA/SEFFDA180/2013/DAR2 011/010	Solar Energy Facilities on the Farm De Aar 180- Site DAR2011/010	Artefacts	Ungraded
128654	3024CA/SEFFDA180/2013/DAR2 011/011	Solar Energy Facilities on the Farm De Aar 180- Site DAR2011/011	Artefacts	Ungraded
128655	3024CA/SEFFDA180/2013/DAR2 011/012	Solar Energy Facilities on the Farm De Aar 180- Site DAR2011/012	Artefacts	Ungraded
128656	3024CA/SEFFDA180/2013/DAR2	Solar Energy Facilities on the Farm De Aar 180- Site	Artefacts	Ungraded

CTS Heritage

16 Edison Way, Century City, 7441

Tel: +27 (0)87 073 5739 Email: [info@ctsheritage.com](mailto:info@ctsheritage.com) Web: [www.ctsheritage.com](http://www.ctsheritage.com)





CTS HERITAGE

	011/013	DAR2011/013		
128657	3024CA/SEFFDA180/2013/DAR2 011/014	Solar Energy Facilities on the Farm De Aar 180- Site DAR2011/014	Artefacts	Ungraded
128658	3024CA/SEFFDA180/2013/DAR2 011/015	Solar Energy Facilities on the Farm De Aar 180- Site DAR2011/015	Artefacts	Ungraded
128659	3024CA/SEFFDA180/2013/DAR2 011/016	Solar Energy Facilities on the Farm De Aar 180- Site DAR2011/016	Stone walling	Ungraded
128660	3024CA/SEFFDA180/2013/DAR2 011/017	Solar Energy Facilities on the Farm De Aar 180- Site DAR2011/017	Artefacts	Ungraded
128661	3024CA/SEFFDA180/2013/DAR2 011/018	Solar Energy Facilities on the Farm De Aar 180- Site DAR2011/018	Artefacts	Ungraded
128662	3024CA/SEFFDA180/2013/DAR2 011/019	Solar Energy Facilities on the Farm De Aar 180- Site DAR2011/019	Artefacts	Ungraded
128663	3024CA/SEFFDA180/2013/DAR2 011/020	Solar Energy Facilities on the Farm De Aar 180- Site DAR2011/020	Artefacts	Ungraded
128664	3024CA/SEFFDA180/2013/DAR2 011/021	Solar Energy Facilities on the Farm De Aar 180- Site DAR2011/021	Artefacts	Ungraded
128665	3024CA/SEFFDA180/2013/DAR2 011/022	Solar Energy Facilities on the Farm De Aar 180- Site DAR2011/022	Artefacts	Ungraded
128666	3024CA/SEFFDA180/2013/DAR2 011/023	Solar Energy Facilities on the Farm De Aar 180- Site DAR2011/023	Artefacts	Ungraded
128668	3024CA/SEFFDA180/2013/DAR2 011/024	Solar Energy Facilities on the Farm De Aar 180- Site DAR2011/024	Building	Ungraded

CTS Heritage

16 Edison Way, Century City, 7441

Tel: +27 (0)87 073 5739 Email: [info@ctsheritage.com](mailto:info@ctsheritage.com) Web: [www.ctsheritage.com](http://www.ctsheritage.com)



CTS HERITAGE

## APPENDIX 2

### Reference List from SAHRIS

Heritage Impact Assessments				
Nid	Report Type	Author/s	Date	Title
104574	Heritage Scoping	Wouter Fourie	10/10/2012	Heritage Scoping Report for the Proposed Wind Farm Facility for Renosterberg Wind Energy Company (RWEC) near Petrusville, Northern Cape Province
104576	Heritage Scoping	Wouter Fourie	10/10/2012	Heritage Scoping Report for the Proposed Solar PV Facility for Renosterberg Wind Energy Company (RWEC) near Petrusville, Northern Cape Province
104804	PIA Desktop	John E Almond	01/09/2012	Palaeontological specialist assessment: desktop study PROPOSED RENOSTERBERG SOLAR PV AND WIND ENERGY FACILITIES NEAR DE AAR, NORTHERN CAPE PROVINCE
133138	HIA Phase 1	Jayson Orton, Lita Webley	09/07/2013	HERITAGE IMPACT ASSESSMENT FOR MULTIPLE PROPOSED SOLAR ENERGY FACILITIES
133536	Palaeontological Specialist Reports	John E Almond	01/07/2013	PALAEONTOLOGICAL SPECIALIST STUDY
133536	Palaeontological Specialist Reports	John E Almond	01/07/2013	PALAEONTOLOGICAL SPECIALIST STUDY
163982	Palaeontological Specialist Reports		31/08/2013	Palaeontological specialist assessment: combined desktop and field study: Proposed development PV Solar Facility near De Aar, Northern Cape Province
163994		Wouter Fourie	03/08/2013	Proposed PV Facility: Heritage Impact Report
177599	AIA Phase 1	Jonathan Kaplan	01/04/2010	ARCHAEOLOGICAL IMPACT ASSESSMENT PROPOSED PHOTOVOLTAIC POWER GENERATION FACILITY IN DE AAR NORTHERN CAPE

CTS Heritage

16 Edison Way, Century City, 7441

Tel: +27 (0)87 073 5739 Email: info@ctsheritage.com Web: www.ctsheritage.com



CTS HERITAGE

177600	Site Inspection Report	Will Archer, Jonathan Kaplan	01/05/2012	Reconnaissance and plan for further mitigation: sites impacted on by proposed photovoltaic power generation facility in De Aar Northern Cape
256408	Palaeontological Specialist Reports	John E Almond	16/07/2013	Palaeontological Specialist Study: Combined Desktop and Field-based Assessments - Proposed Photovoltaic (Solar) Energy Facilities on Badenhorst Dam Farm near De Aar, Northern Cape
256413	Heritage Impact Assessment Specialist Reports	Jayson Orton	09/07/2013	Heritage Impact Assessment for Multiple Proposed Solar Energy Facilities on De Aar 180/1 (Badenhorst Dam Farm), De Aar, Northern Cape
339820	Heritage Impact Assessment Specialist Reports	Lita Webley, Jayson Orton	01/12/2011	Proposed De Aar Wind Energy Facility on the North and South Plateau, Northern Cape Province
339824	Heritage Impact Assessment Specialist Reports	Lita Webley, David Halkett	01/06/2015	Addendum: Proposed Wind Energy Facility situated on the Eastern plateau (South) near De Aar, Northern Cape Province.
4052	HIA Phase 1	Albert van Jaarsveld	01/03/2006	Hydra-Perseus and Beta-Perseus 765 kV Transmission Power Lines Environmental Impact Assessment. Impact on Cultural Heritage Resources
49745	AIA Phase 1	Neels Kruger	01/03/2012	ARCHAEOLOGICAL IMPACT ASSESSMENT (AIA) OF DEMARCATED SURFACE AREAS ON THE OF THE FARM VETLAAGTE 4, DE AAR, NORTHERN CAPE PROVINCE
49843	PIA Phase 1	John E Almond	01/05/2012	PALAEONTOLOGICAL SPECIALIST STUDY: COMBINED DESKTOP AND FIELD-BASED ASSESSMENTS Proposed solar power generation facilities on the remaining extent of the farm Vetlaagte No. 4, De Aar, Northern Cape Province
50006	HIA Phase 1	Jayson Orton	20/02/2012	HERITAGE IMPACT ASSESSMENT FOR THREE SOLAR ENERGY FACILITIES AT DE AAR, WESTERN CAPE

CTS Heritage

16 Edison Way, Century City, 7441

Tel: +27 (0)87 073 5739 Email: info@ctsheritage.com Web: www.ctsheritage.com





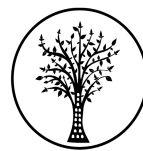
CTS HERITAGE

53198	HIA Phase 1	Elize Becker	20/04/2012	Phase 2 Heritage Impact Assessment De Aar Solar One Photovoltaic Power Project Heritage Impact Assessment Phase 2
53200	Heritage Scoping	Elize Becker	18/01/2012	HERITAGE IMPACT ASSESSMENT SCOPING REPORT Prepared for De Aar Solar One Photovoltaic Power Plant, Northern Cape
58989	PIA Desktop	James Brink	10/08/2012	A Palaeontological Desktop Study of the Area to be Affected by the Proposed Photovoltaic Power Project on Portion 3 of Farm Hartebeestplaats 135
8378	HIA Phase 1	Jayson Orton	29/02/2012	HIA for three solar energy facilities at the De Aar, Northern Cape (Paarde Valley, Badenhorst Dam Farm and Annex Du Plessis Dam Farm)
89361	HIA Phase 1	Neels Kruger	01/03/2012	ENNEX DEVELOPMENTS: PROPOSED ESTABLISHMENT OF A SOLAR ENERGY FACILITY NEAR DE AAR, NORTHERN CAPE PROVINCE Phase 1 Archaeological Impact Assessment Report

**CTS Heritage**

16 Edison Way, Century City, 7441

**Tel:** +27 (0)87 073 5739 **Email:** info@ctsheritage.com **Web:** www.ctsheritage.com



CTS HERITAGE

## APPENDIX 3 - Keys/Guides

### Key/Guide to Acronyms

<b>AIA</b>	Archaeological Impact Assessment
<b>DARD</b>	Department of Agriculture and Rural Development (KwaZulu-Natal)
<b>DEA</b>	Department of Environmental Affairs (National)
<b>DEADP</b>	Department of Environmental Affairs and Development Planning (Western Cape)
<b>DEDEAT</b>	Department of Economic Development, Environmental Affairs and Tourism (Eastern Cape)
<b>DEDECT</b>	Department of Economic Development, Environment, Conservation and Tourism (North West)
<b>DEDT</b>	Department of Economic Development and Tourism (Mpumalanga)
<b>DEDTEA</b>	Department of economic Development, Tourism and Environmental Affairs (Free State)
<b>DENC</b>	Department of Environment and Nature Conservation (Northern Cape)
<b>DMR</b>	Department of Mineral Resources (National)
<b>GDARD</b>	Gauteng Department of Agriculture and Rural Development (Gauteng)
<b>HIA</b>	Heritage Impact Assessment
<b>LEDET</b>	Department of Economic Development, Environment and Tourism (Limpopo)
<b>MPRDA</b>	Mineral and Petroleum Resources Development Act, no 28 of 2002
<b>NEMA</b>	National Environmental Management Act, no 107 of 1998
<b>NHRA</b>	National Heritage Resources Act, no 25 of 1999
<b>PIA</b>	Palaeontological Impact Assessment
<b>SAHRA</b>	South African Heritage Resources Agency
<b>SAHRIS</b>	South African Heritage Resources Information System
<b>VIA</b>	Visual Impact Assessment

### Full guide to Palaeosensitivity Map legend

<b>RED:</b>	VERY HIGH - field assessment and protocol for finds is required
<b>ORANGE/YELLOW:</b>	HIGH - desktop study is required and based on the outcome of the desktop study, a field assessment is likely
<b>GREEN:</b>	MODERATE - desktop study is required
<b>BLUE/PURPLE:</b>	LOW - no palaeontological studies are required however a protocol for chance finds is required
<b>GREY:</b>	INSIGNIFICANT/ZERO - no palaeontological studies are required
<b>WHITE/CLEAR:</b>	UNKNOWN - these areas will require a minimum of a desktop study.

CTS Heritage

16 Edison Way, Century City, 7441

Tel: +27 (0)87 073 5739 Email: info@ctsheritage.com Web: www.ctsheritage.com



CTS HERITAGE

## APPENDIX 4 - Methodology

The Heritage Screener summarises the heritage impact assessments and studies previously undertaken within the area of the proposed development and its surroundings. Heritage resources identified in these reports are assessed by our team during the screening process.

The heritage resources will be described both in terms of **type**:

- Group 1: Archaeological, Underwater, Palaeontological and Geological sites, Meteorites, and Battlefields
- Group 2: Structures, Monuments and Memorials
- Group 3: Burial Grounds and Graves, Living Heritage, Sacred and Natural sites
- Group 4: Cultural Landscapes, Conservation Areas and Scenic routes

and **significance** (Grade I, II, IIIa, b or c, ungraded), as determined by the author of the original heritage impact assessment report or by formal grading and/or protection by the heritage authorities.

Sites identified and mapped during research projects will also be considered.

### DETERMINATION OF THE EXTENT OF THE INCLUSION ZONE TO BE TAKEN INTO CONSIDERATION

The extent of the inclusion zone to be considered for the Heritage Screener will be determined by CTS based on:

- the size of the development,
- the number and outcome of previous surveys existing in the area
- the potential cumulative impact of the application.

The inclusion zone will be considered as the region within a maximum distance of 50 km from the boundary of the proposed development.

### DETERMINATION OF THE PALAEONTOLOGICAL SENSITIVITY

The possible impact of the proposed development on palaeontological resources is gauged by:

- reviewing the fossil sensitivity maps available on the South African Heritage Resources Information System (SAHRIS)
- considering the nature of the proposed development
- when available, taking information provided by the applicant related to the geological background of the area into account

### DETERMINATION OF THE COVERAGE RATING ASCRIBED TO A REPORT POLYGON

Each report assessed for the compilation of the Heritage Screener is colour-coded according to the level of coverage accomplished. The extent of the surveyed coverage is labeled in three categories, namely low, medium and high. In most instances the extent of the map corresponds to the extent of the development for which the specific report

CTS Heritage

16 Edison Way, Century City, 7441

Tel: +27 (0)87 073 5739 Email: info@ctsheritage.com Web: www.ctsheritage.com





CTS HERITAGE

was undertaken.

**Low coverage** will be used for:

- desktop studies where no field assessment of the area was undertaken;
- reports where the sites are listed and described but no GPS coordinates were provided.
- older reports with GPS coordinates with low accuracy ratings;
- reports where the entire property was mapped, but only a small/limited area was surveyed.
- uploads on the National Inventory which are not properly mapped.

**Medium coverage** will be used for

- reports for which a field survey was undertaken but the area was not extensively covered. This may apply to instances where some impediments did not allow for full coverage such as thick vegetation, etc.
- reports for which the entire property was mapped, but only a specific area was surveyed thoroughly. This is differentiated from low ratings listed above when these surveys cover up to around 50% of the property.

**High coverage** will be used for

- reports where the area highlighted in the map was extensively surveyed as shown by the GPS track coordinates. This category will also apply to permit reports.

## RECOMMENDATION GUIDE

The Heritage Screener includes a set of recommendations to the applicant based on whether an impact on heritage resources is anticipated. One of three possible recommendations is formulated:

**(1) The heritage resources in the area proposed for development are sufficiently recorded** - The surveys undertaken in the area adequately captured the heritage resources. There are no known sites which require mitigation or management plans. No further heritage work is recommended for the proposed development.

This recommendation is made when:

- enough work has been undertaken in the area
- it is the professional opinion of CTS that the area has already been assessed adequately from a heritage perspective for the type of development proposed

**(2) The heritage resources and the area proposed for development are only partially recorded** - The surveys undertaken in the area have not adequately captured the heritage resources and/or there are sites which require mitigation or management plans. Further specific heritage work is recommended for the proposed development.

This recommendation is made in instances in which there are already some studies undertaken in the area and/or in the adjacent area for the proposed development. Further studies in a limited HIA may include:

CTS Heritage

16 Edison Way, Century City, 7441

Tel: +27 (0)87 073 5739 Email: [info@ctsheritage.com](mailto:info@ctsheritage.com) Web: [www.ctsheritage.com](http://www.ctsheritage.com)



CTS HERITAGE

- improvement on some components of the heritage assessments already undertaken, for instance with a renewed field survey and/or with a specific specialist for the type of heritage resources expected in the area
- compilation of a report for a component of a heritage impact assessment not already undertaken in the area
- undertaking mitigation measures requested in previous assessments/records of decision.

**(3) The heritage resources within the area proposed for the development have not been adequately surveyed yet - Few or no surveys have been undertaken in the area proposed for development. A full Heritage Impact Assessment with a detailed field component is recommended for the proposed development.**

CTS Heritage

16 Edison Way, Century City, 7441

**Tel:** +27 (0)87 073 5739 **Email:** [info@ctsheritage.com](mailto:info@ctsheritage.com) **Web:** [www.ctsheritage.com](http://www.ctsheritage.com)