



Date: 7 April 2022

To whom it may concern,

**Proposed Development of the Wag 'n Bietjie infrastructure associated with the authorised PV Facilities near De Aar**

A Heritage Impact Assessment for the above proposed development was completed by CTS Heritage in March 2022. In this assessment (March 2022), two alternatives for a proposed 10ha MTS were assessed for the Wag 'n Bietjie PV facility. Due to a new Eskom requirement received, the site of the Wag 'n Bietjie MTS Substation must now be 36 ha in extent (instead of 10ha) (Figure 1). Fortunately this entire area falls within the study area previously assessed in the HIA completed for this project (Figure 2).

The 36ha (instead of the previously indicated 10ha) on which the Wag 'n Bietjie MTS will be placed, was assessed during the site visit (the total assessment area was 257ha) and has been addressed in the specialist report provided. The preferred alternative remains preferred from a heritage perspective due to the likely impacts to Site 014 anticipated from the alternative MTS area (Figure 3).

The impact associated with the access road to the Wag 'n Bietjie MTS which now forms part of the project components is as follows :

- A large portion of the access route has been assessed as part of the site investigation. There is however an approximately 3km portion of the road which falls outside the previously assessed area. This part of the access road is an existing gravel road which will only be upgraded for the purpose of the Wag 'n Bietjie MTS.
- The proposed route falls within an area of low sensitivity and is therefore likely to result in insignificant negative impacts on the heritage resources in the area and do not change the impact ratings determined by the Heritage Impact Assessment.
- Considering the fact that the road is existing and will only be upgraded, the proposed access road is considered acceptable from a heritage perspective and can be approved following the implementation of relevant mitigation measures described in the Specialist Report.

Kind regards

Jenna Lavin

[jenna.lavin@ctsheritage.com](mailto:jenna.lavin@ctsheritage.com)

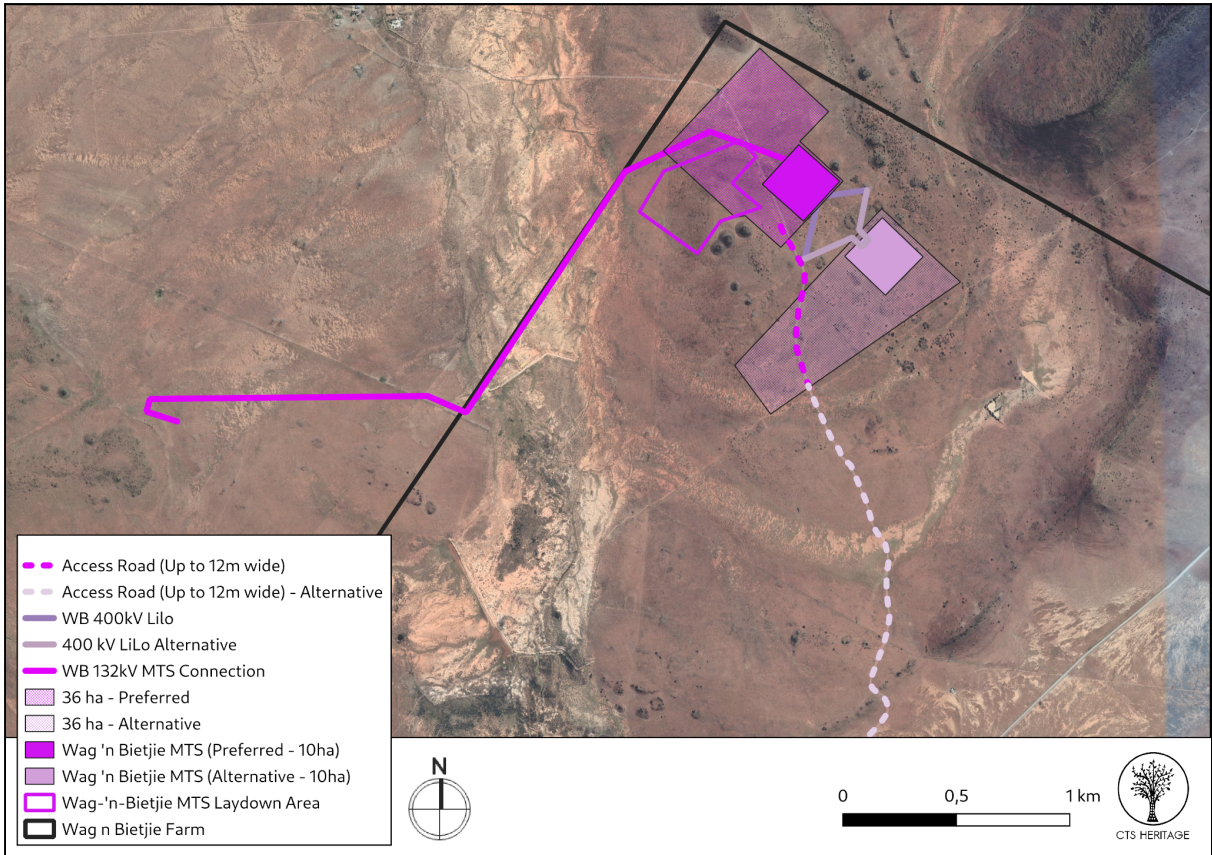


Figure 1: Updated layout overlaying original layout

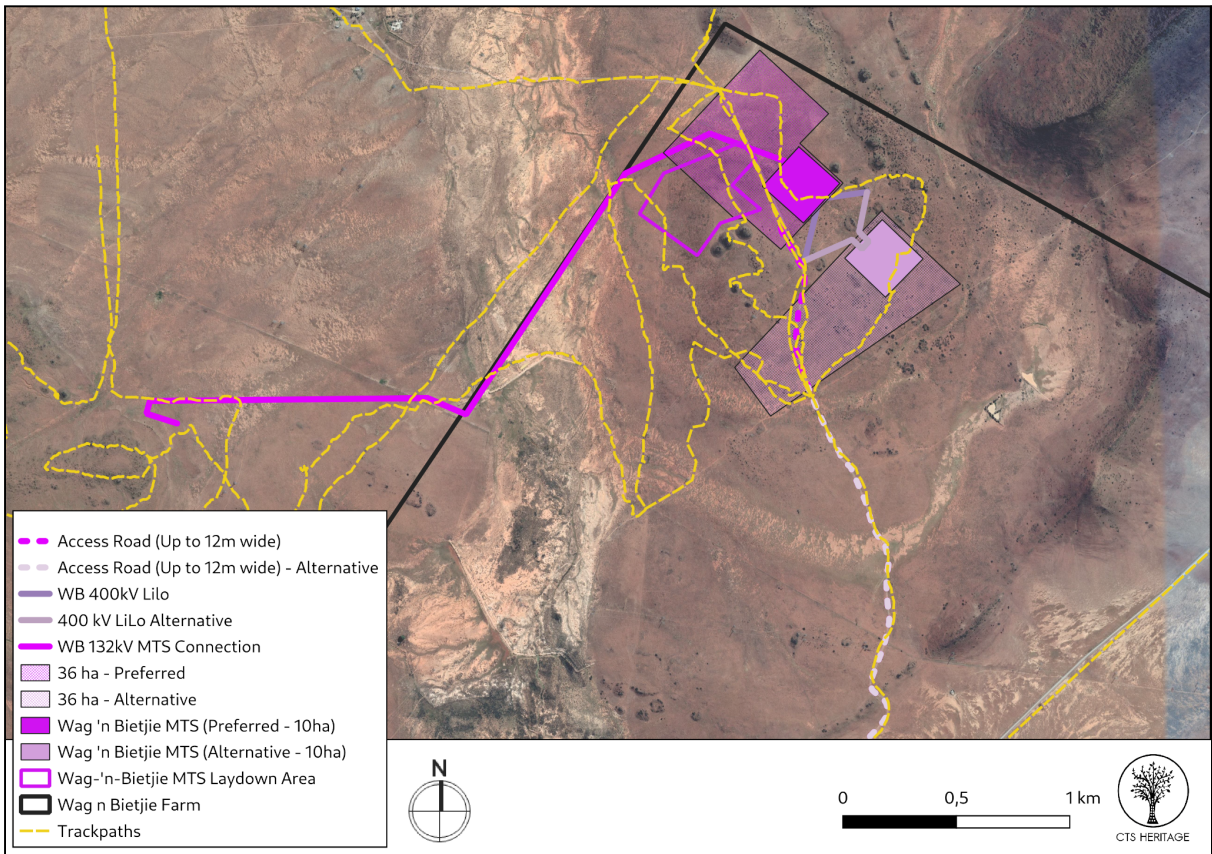


Figure 2: Track paths indicating that the area walked by the specialist covers the amendments

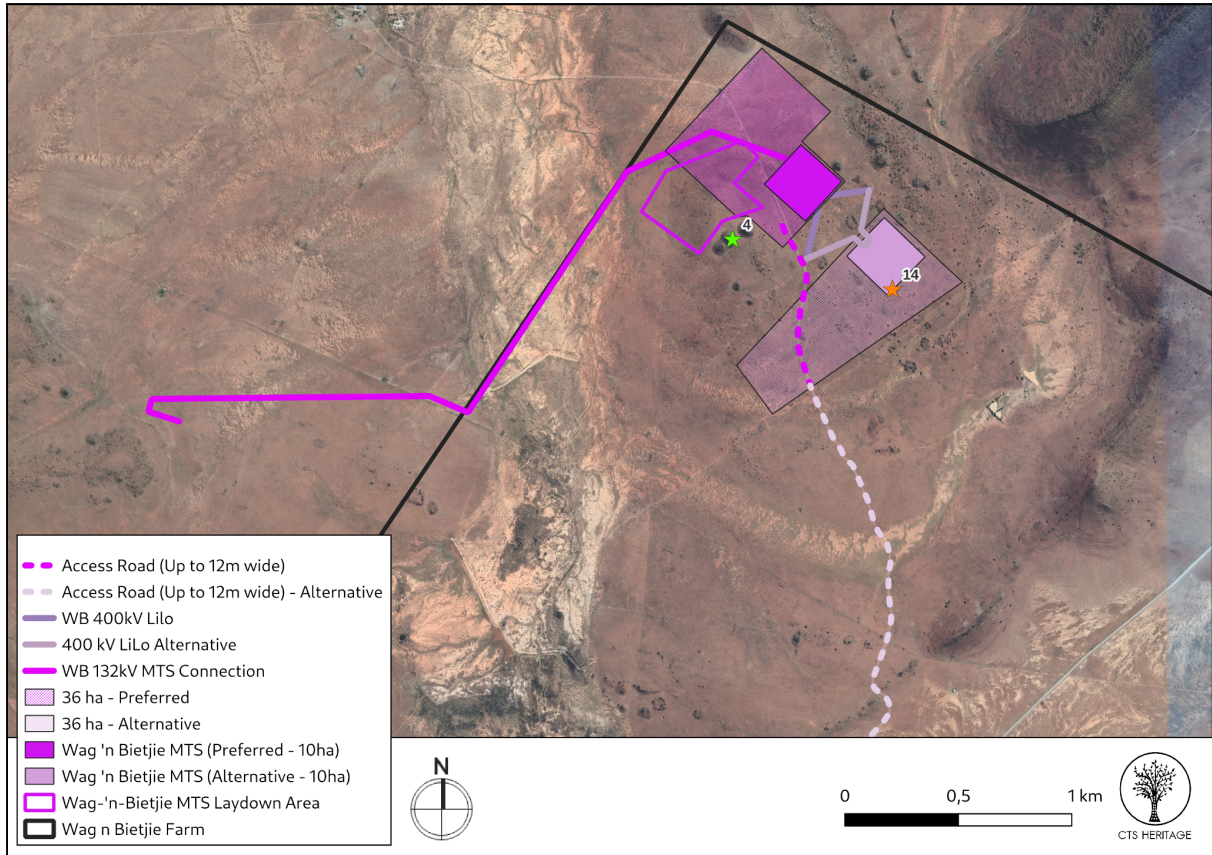


Figure 3: Significant sites identified in the field assessment relative to the amended layout