

CTS HERITAGE

HERITAGE SCREENER

CTS Reference Number:	CTS22_041
SAHRIS Reference:	
Client:	Savannah Environmental (Pty) Ltd
Date:	May 2022
Title:	Proposed development of the Kiara PV 5 Facility and Associated Infrastructure, North West Province

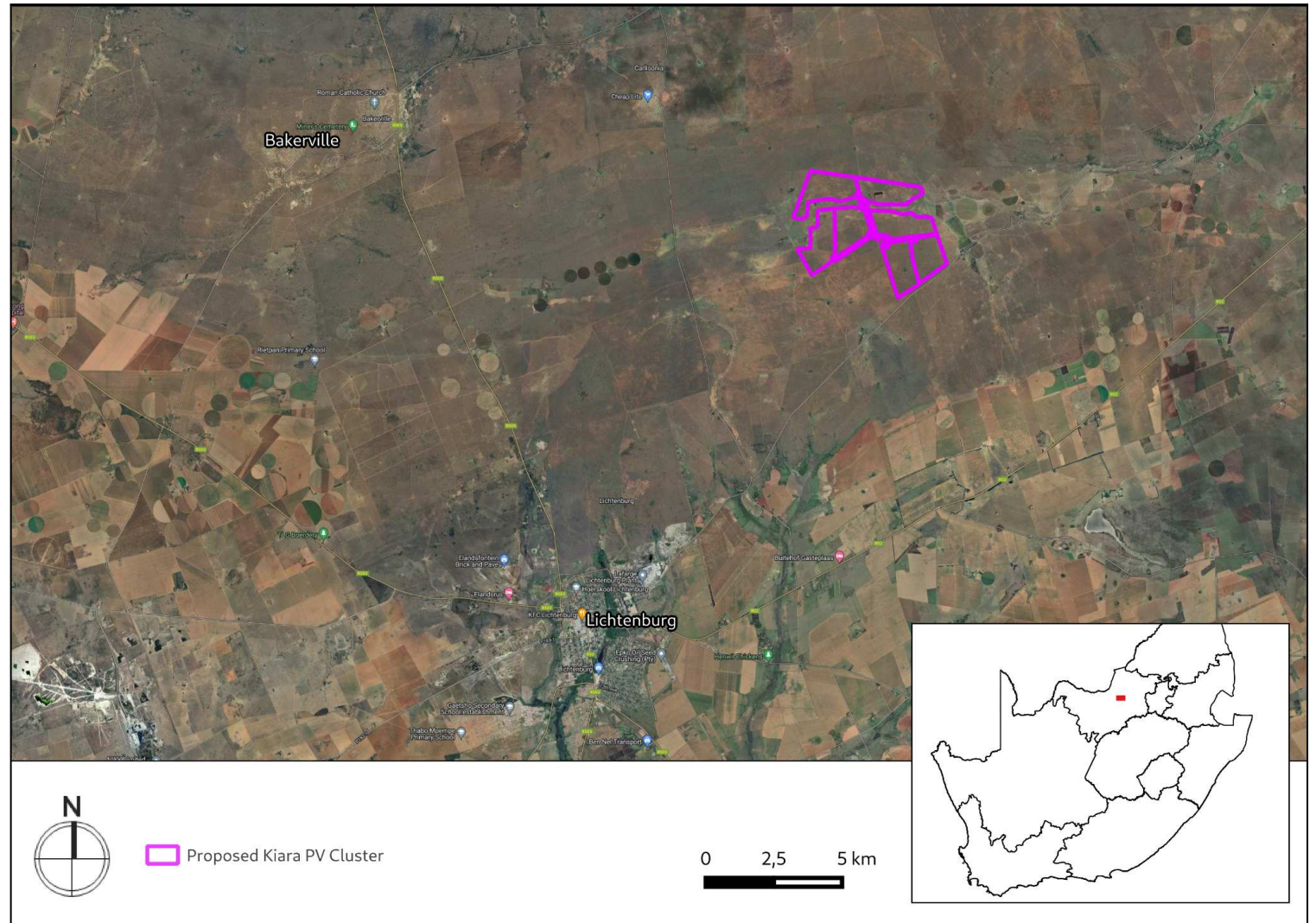


Figure 1a. Satellite map indicating the location of the proposed development in the North West Province

CTS Heritage

16 Edison Way, Century City, Cape Town

Tel: +27 (0)87 073 5739 Email: info@ctsheritage.com Web: www.ctsheritage.com



CTS HERITAGE

1. Proposed Development Summary

The Applicant, Voltalia South Africa (Pty) Ltd, is proposing the construction of a photovoltaic (PV) solar energy facility (known as the **Kiara PV 5 facility**) located on a site approximately 16km north east of the town of Lichtenburg in the North West Province. The solar PV facility will comprise several arrays of PV panels and associated infrastructure and will have a contracted capacity of up to **120MW**. The development area is situated within the Ditsobotla Local Municipality within the Ngaka Modiri Molema District Municipality. The site is accessible via an existing gravel road which provides access to the development area.

The development area for the PV facility and associated infrastructure will be located on the Remaining Extent of the Farm Hollaagte No. 8

Six additional PV facilities (Kiara PV 1, Kiara PV 2, Kiara PV 3, Kiara PV 4, Kiara PV 6, Kiara PV 7) are concurrently being considered on the project site (within Portion 2 of the Farm Hollaagte 8 and the Remaining Extent of the Farm Hollaagte No. 8) and are assessed through separate Environmental Impact Assessment (EIA) processes.

A facility development area (approximately **187ha**) as well as grid connection solution have been considered in the Scoping phase. The infrastructure associated with this PV facility includes:

- PV modules and mounting structures
- Inverters and transformers
- Battery Energy Storage System (BESS)
- Site and internal access roads (up to 8m wide)
- Site offices and maintenance buildings, including workshop areas for maintenance and storage.
- Temporary and permanent laydown area
- Grid connection solution will include:
 - Facility Substation
 - Eskom Switching Station
 - A 275kV powerline (16.6km in length) (either single or double circuit), to connect the PV facility to the Watershed MTS. The 132kV powerline from the on-site substation to the collector substation is approximately 1.2 km long.

To avoid areas of potential sensitivity and to ensure that potential detrimental environmental impacts are minimised as far as possible, the developer will identify a suitable development footprint within which the infrastructure of Kiara PV 5 facility and its associated infrastructure is proposed to be located and fully assessed during the EIA Phase.

2. Application References

Name of relevant heritage authority(s)	SAHRA
Name of decision making authority(s)	DFFE

CTS Heritage

16 Edison Way, Century City, Cape Town

Tel: +27 (0)87 073 5739 Email: info@ctsheritage.com Web: www.ctsheritage.com



3. Property Information

Latitude / Longitude	26° 1'12.68" 26°15'25.89"E
Erf number / Farm number	Remaining Extent of the Farm Hollaagte No. 8
Local Municipality	Ditsobotla Local Municipality
District Municipality	Ngaka Modiri Molema District Municipality
Province	North West Province
Current Use	Agriculture with approved PV facility
Current Zoning	Agriculture

4. Nature of the Proposed Development

Total Area	TBA
Depth of excavation (m)	TBA
Height of development (m)	TBA

5. Category of Development

x	Triggers: Section 38(8) of the National Heritage Resources Act
	Triggers: Section 38(1) of the National Heritage Resources Act
	1. Construction of a road, wall, powerline, pipeline, canal or other similar form of linear development or barrier over 300m in length.
	2. Construction of a bridge or similar structure exceeding 50m in length.
	3. Any development or activity that will change the character of a site-
x	a) exceeding 5 000m ² in extent
	b) involving three or more existing erven or subdivisions thereof



CTS HERITAGE

	c) involving three or more erven or divisions thereof which have been consolidated within the past five years
	4. Rezoning of a site exceeding 10 000m ²
	5. Other (state):

6. Additional Infrastructure Required for this Development

NA

CTS Heritage

16 Edison Way, Century City, Cape Town

Tel: +27 (0)87 073 5739 **Email:** info@ctsheritage.com **Web:** www.ctsheritage.com

7. Mapping (please see Appendix 3 and 4 for a full description of our methodology and map legends)

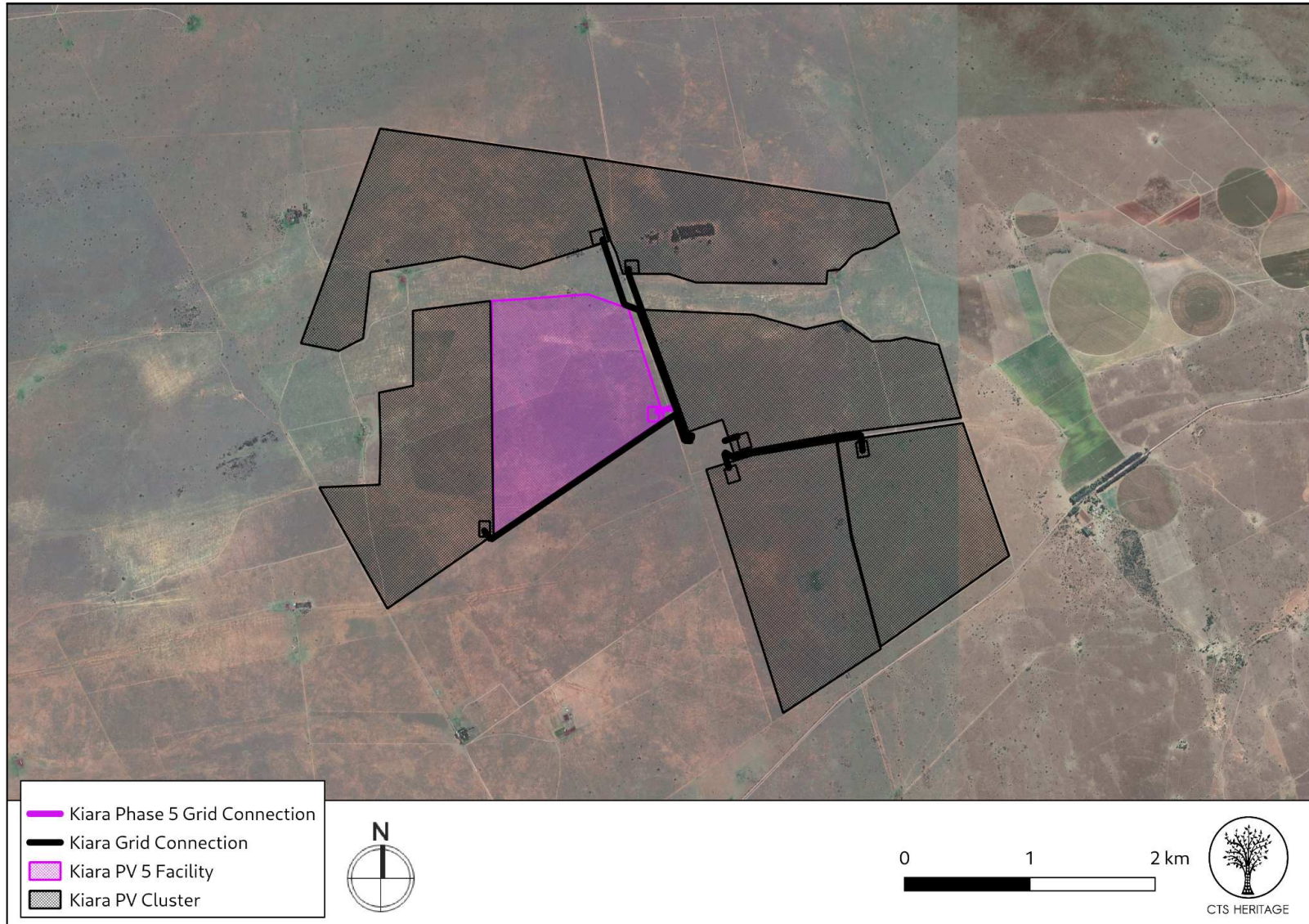
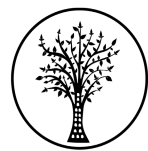


Figure 1b. Overview Map. Satellite image from GoogleEarth indicating the proposed development area relative to the Kiara PV Cluster



CTS HERITAGE

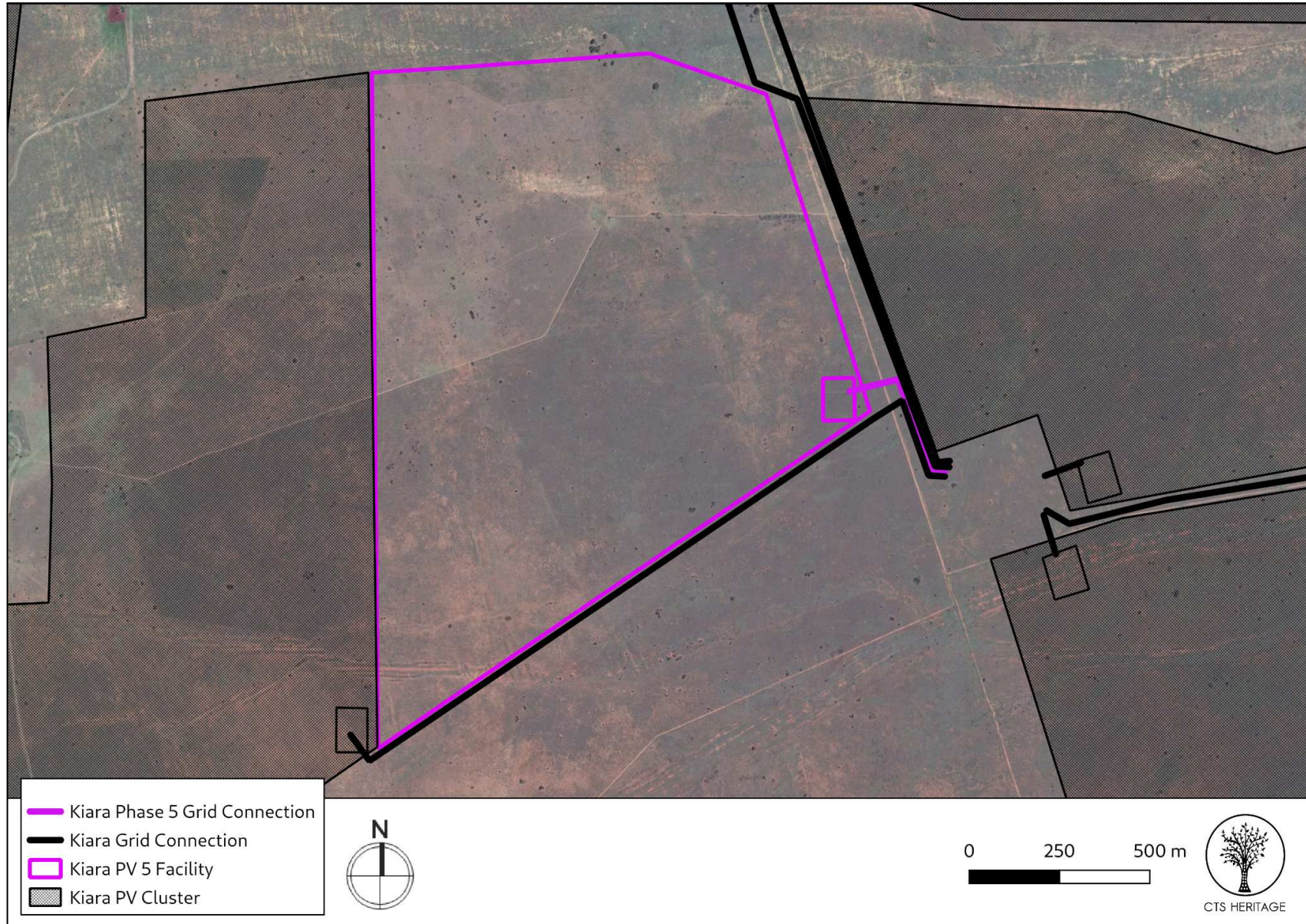
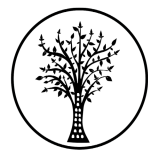


Figure 1c. Overview Map. Satellite image from GoogleEarth indicating the proposed development area

CTS Heritage

16 Edison Way, Century City, Cape Town

Tel: +27 (0)87 073 5739 Email: info@ctsheritage.com Web: www.ctsheritage.com



CTS HERITAGE

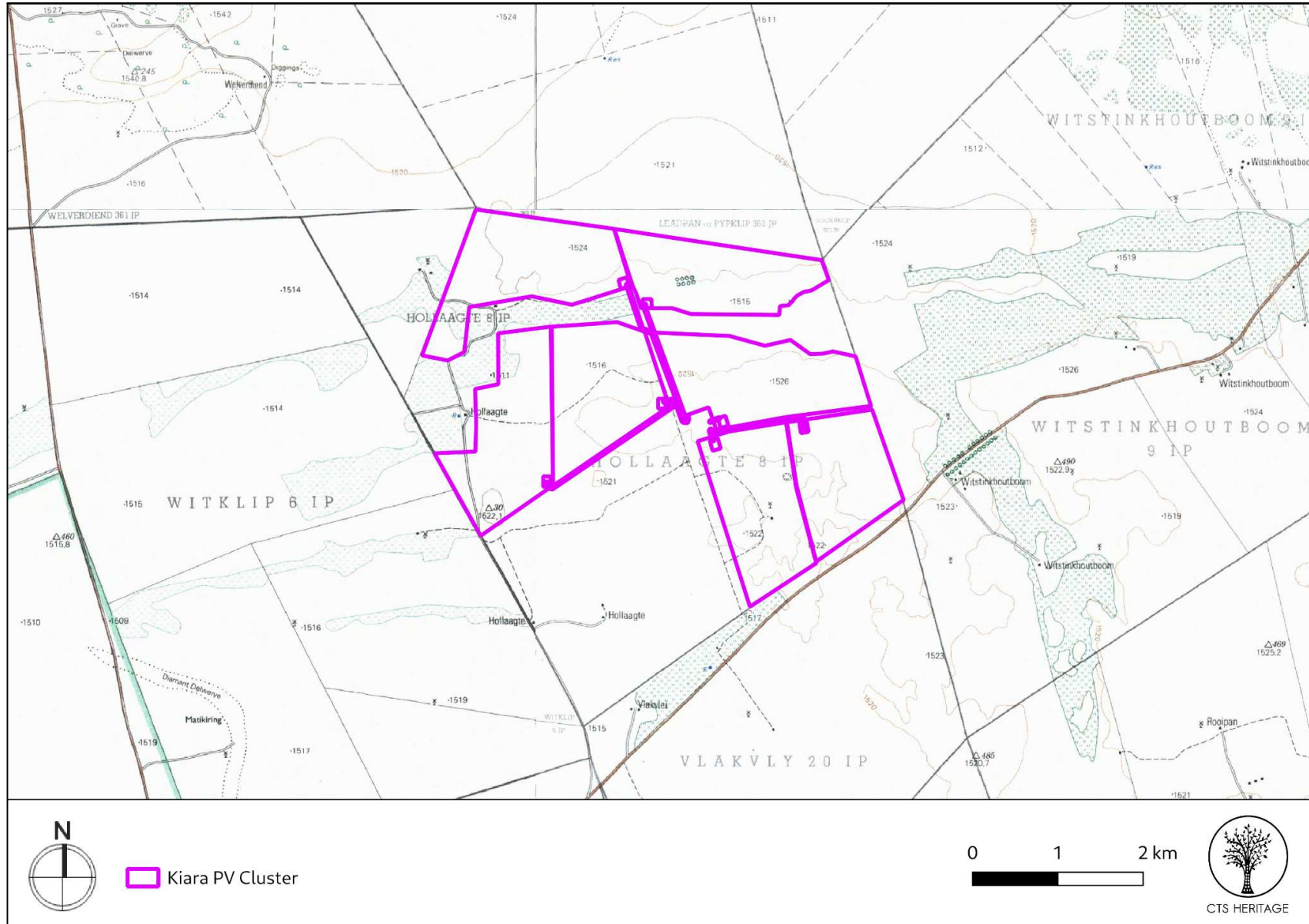


Figure 1d. Overview Map. Extract from the 1:50 000 Topo Map indicating the proposed development

CTS Heritage

16 Edison Way, Century City, Cape Town

Tel: +27 (0)87 073 5739 Email: info@ctsheritage.com Web: www.ctsheritage.com

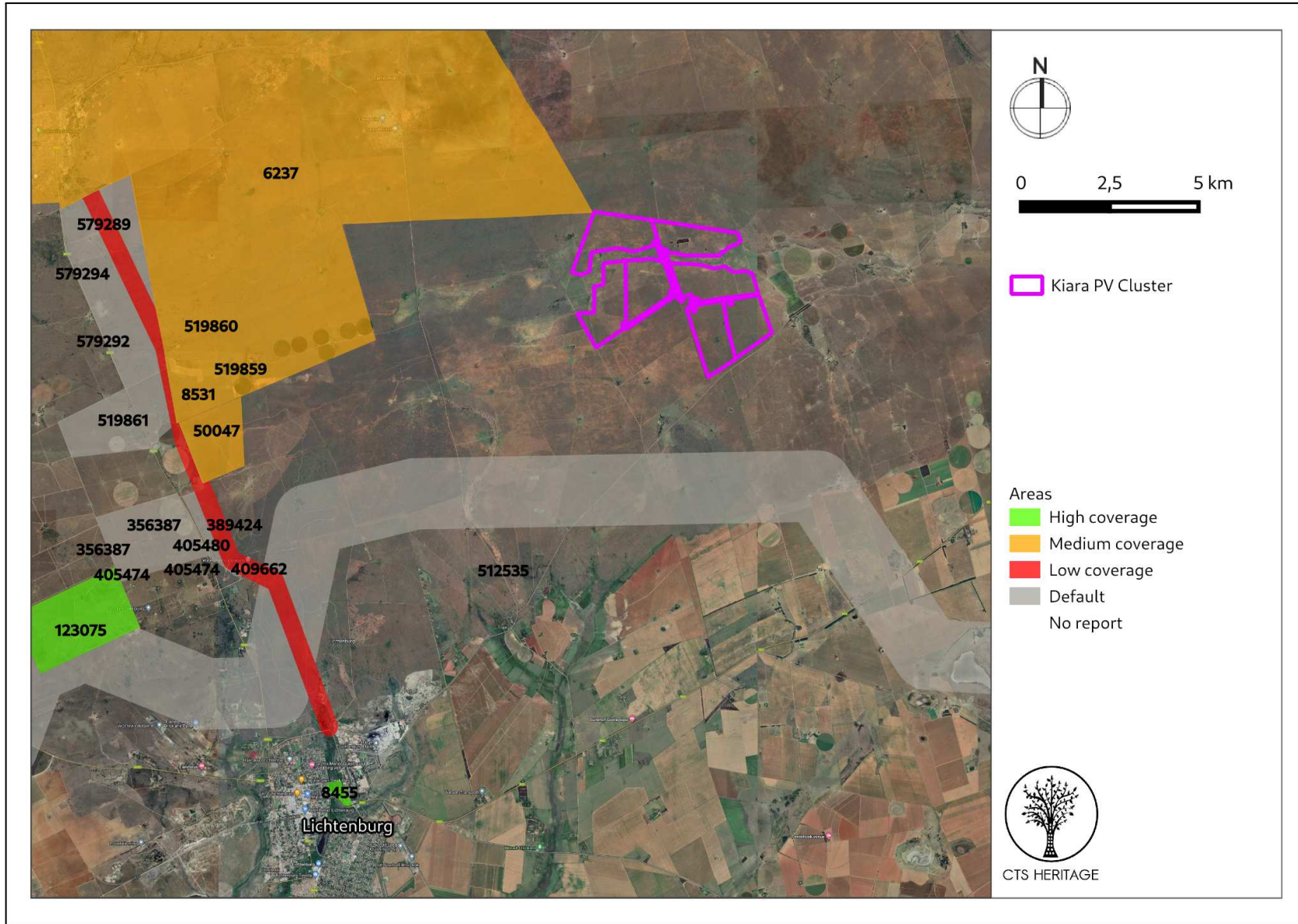


Figure 2a. Previous HIAs Map. Previous Heritage Impact Assessments covering the proposed development area with SAHRIS NIDS indicated. Please see Appendix 2 for a full reference list.



CTS HERITAGE

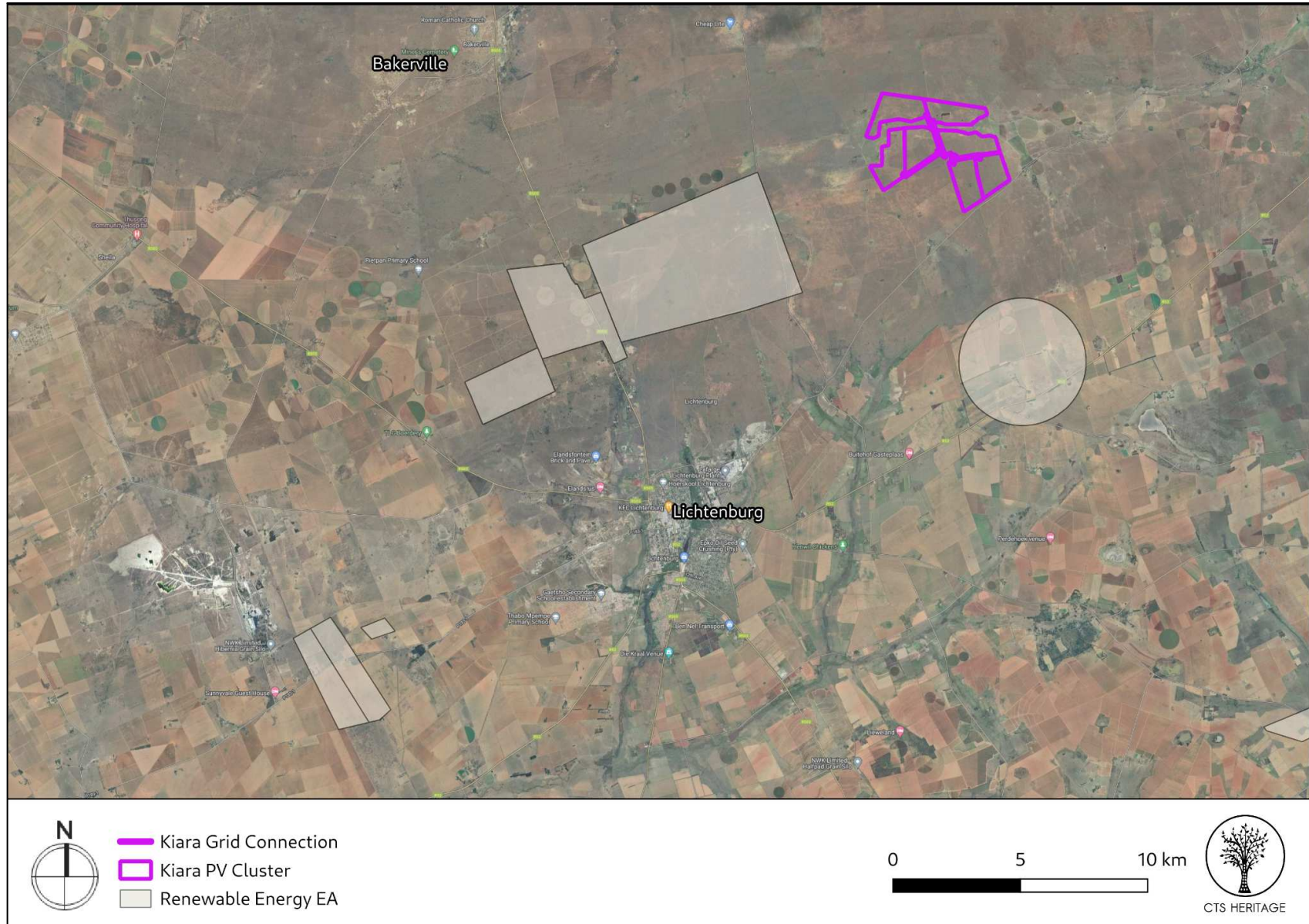


Figure 2b. Renewable Energy Environmental Authorisation. Footprints of approved REFs

CTS Heritage

16 Edison Way, Century City, Cape Town

Tel: +27 (0)87 073 5739 Email: info@ctsheritage.com Web: www.ctsheritage.com

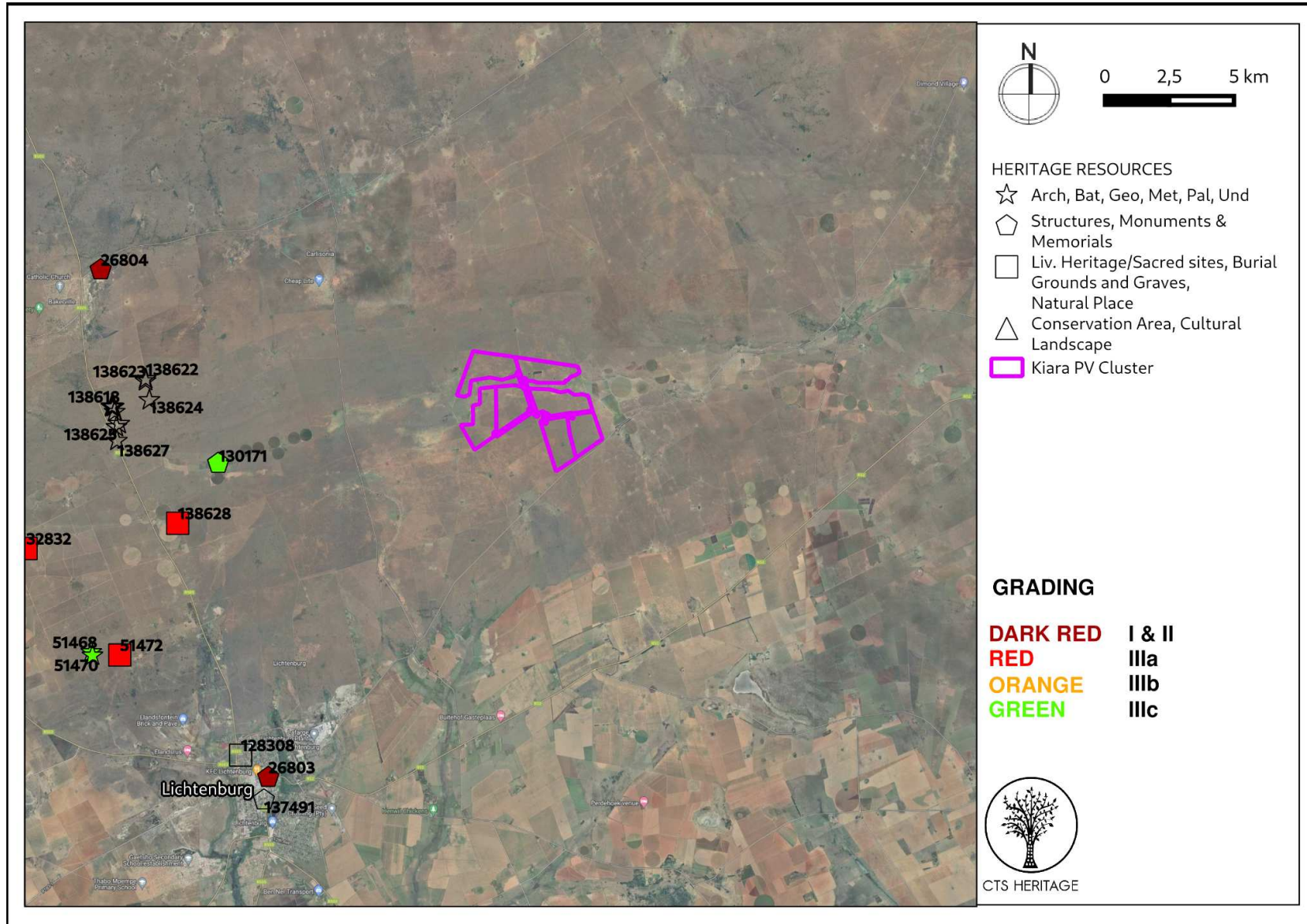
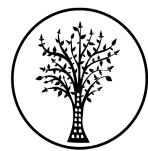


Figure 3. Heritage Resources Map. Heritage Resources previously identified within the study area, with SAHRIS Site IDs indicated in the insets below. Please See Appendix 4 for full description of heritage resource types.



CTS HERITAGE

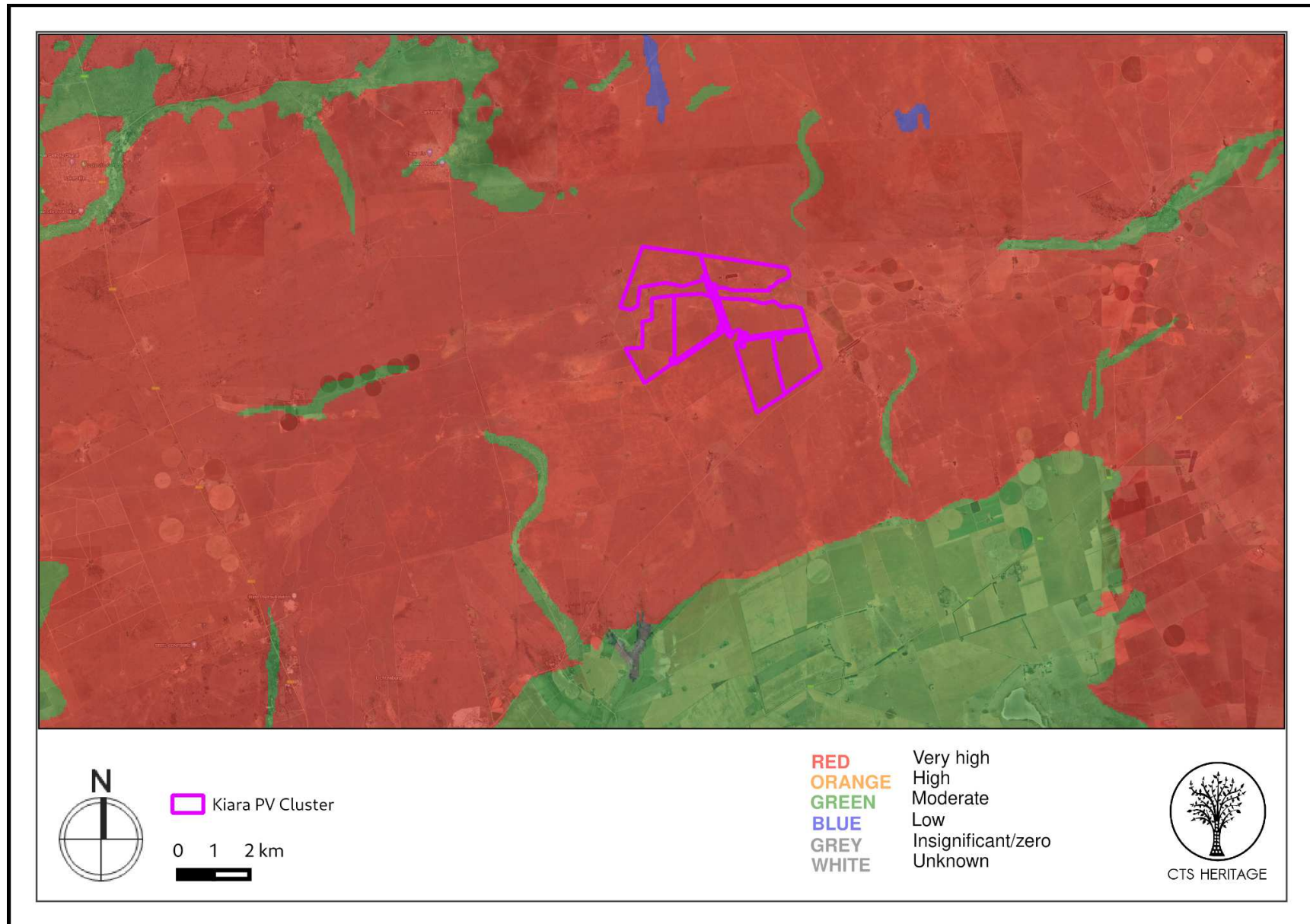


Figure 4a. Palaeosensitivity Map. Indicating fossil sensitivity underlying the study area. Please See Appendix 3 for a full guide to the legend.

CTS Heritage

16 Edison Way, Century City, Cape Town

Tel: +27 (0)87 073 5739 Email: info@ctsheritage.com Web: www.ctsheritage.com

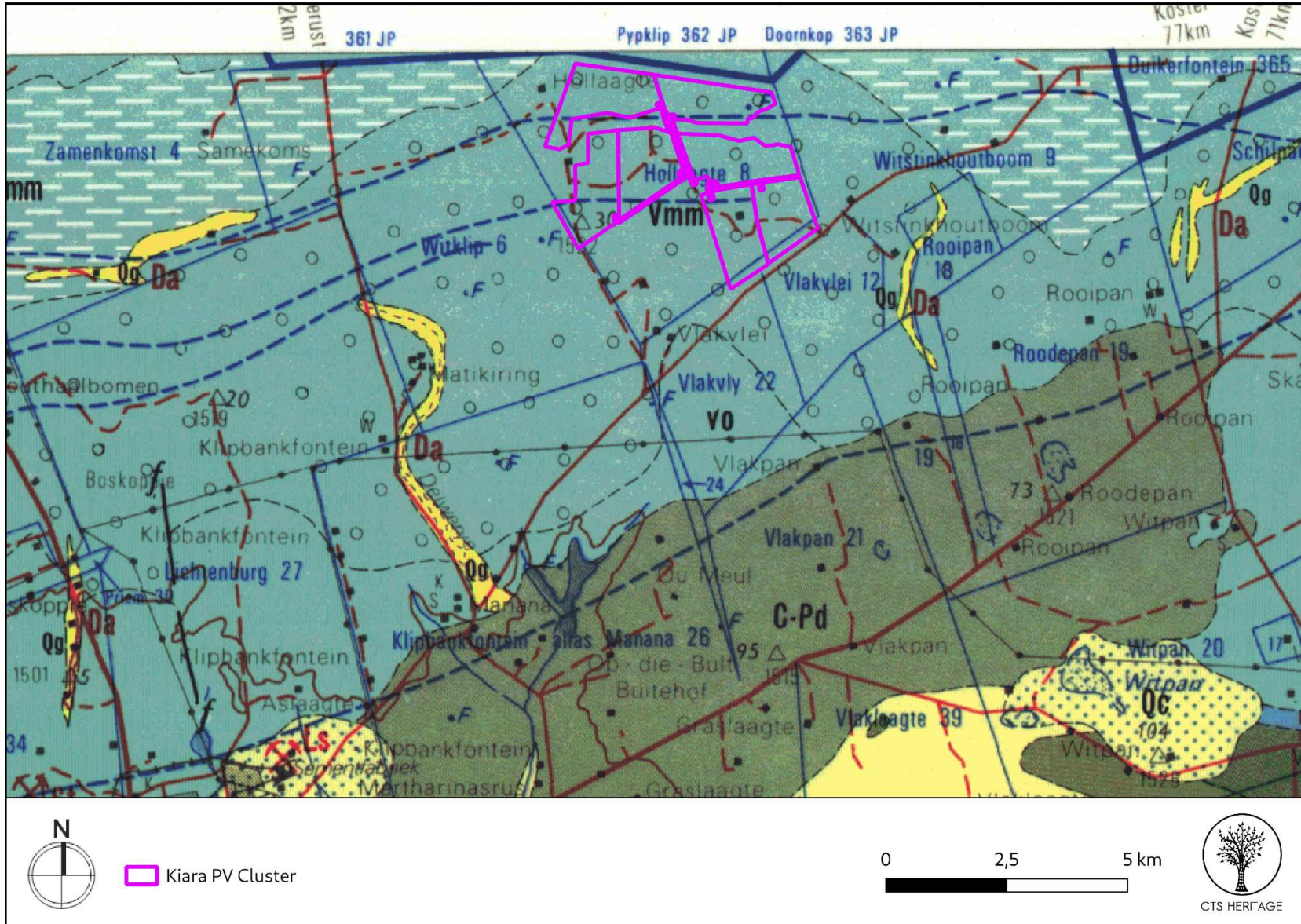


Figure 4b. Geology Map. Extract from the CGS 2626 West Rand Map indicating that the development area for the Kiara Cluster PV Facilities is underlain by sediments of the Monte Christo Formation assigned to the Chuniespoort group, within the Malmani Subgroup (Vmm).



CTS HERITAGE

8. Heritage Assessment

Background

This application is for the proposed development of a PV Facility that forms part of the proposed Kiara PV Cluster located approximately 20km north east of Lichtenburg in the North West Province. The project is located within Ward 16 of the Ditsobotla Local Municipality and the Ngaka Modiri Molema District Municipality in the North West Province.

Archaeology and Built Environment Heritage

Lichtenburg town was established in 1873 and named “Town of Light”. General Del la Rey was buried in Lichtenburg after a fatal shooting incident at Langlaagte. During the 1800’s, more and more farmers settled in the area. During the Second Boer War, the strategically important town of Lichtenburg was occupied by both Boer and Briton for short spells. In November 1900, a large British force under Col. Robert Baden-Powell was transferred to Lichtenburg and secured the town, and much of the territory with it. In addition, the town is known from Rudyard Kipling’s poem, Lichtenberg, which relays the story of a foreign combatant in the second South African War. In 1926, Lichtenburg experienced a gold rush that lasted approximately 10 years. Lichtenburg district is now mostly a farming area, combining cattle and crop-farming and large areas of former diamond mine diggings are now used as grazing.

According to van Schalkwyk et al (1995, SAHRIS NID 6237) in their report completed for the Bakerville Diamond Fields, “land use in the area goes back to the Early Stone Age, as can be determined by the number of stone artifacts found near the old mining commissioners office. This material seems to be disturbed from its primary context because of the mining activities. It is postulated that similar occurrences will be found in other parts of the diggings, but that this material would have been disturbed out of context.” As a result of the dominant land use in the area, many of the heritage resources identified by van Schalkwyk et al (1995) are associated with past and present agriculture, and consist of farming implements, a few windmills, and dipping-troughs. One such trough, located at Elandsputte on the farm Uitgevonden 355JP, was the site where the first diamond was discovered. This structure is a proclaimed national monument (now Provincial Heritage Site). Van Schalkwyk et al (1995) identified a number of burial grounds within their surveyed area (Map 5 and 5a). Heritage resources known from this area include burial grounds and graves, archaeological artefacts and old structures, often associated with farming activities or diamond mining. In his assessment completed for an adjacent PV facility, Van Schalkwyk (2021) identified no significant archaeological heritage resources, but did identify a number of informal burials. No resources are known to be located within any of the areas proposed for the development.

An archaeological field assessment was conducted for the Lichtenburg PV facilities, located approximately 15km west of the proposed development area in 2019. The field assessment conducted noted that, similar to this proposed development area, the area had been disturbed and transformed by agricultural activities. Furthermore, throughout the farming areas several heaps of rocks that were removed from the agricultural fields were identified. During the field assessment conducted in 2019, *no archaeological resources, graves or burial grounds were identified* in the project area. Another field assessment for the Houthaalbomen PV Facility located 20km from the proposed development area was completed in 2014 by Van der Walt and 2021 by CTS Heritage. Van der Walt (2014) notes that “The site lies on a featureless flat plain. The entire development footprint was extensively utilised for crop farming and ploughing through the years resulted in a lateral and downward migration of artefacts making it virtually impossible to identify knapping or manufacture sites and site extent of artefact concentrations. In some areas borrowing animals brought MSA artefacts to the surface where the sand cover is more than a metre and a half thick and the possibility of finding subsurface material cannot be excluded. Most of the Stone Age archaeology in the study area consists of low densities of scattered (and possibly mixed) MSA and LSA artefacts.” The findings of the 2021 field assessment report suggests that “the area was occupied or traversed intermittently by Stone Age groups potentially through periods in both the Middle Stone Age (MSA – 300ka:~40ka) and the Later Stone Age (LSA: 40ka: ~2ka), although artefacts that could be clearly linked with chrono-cultural periods were scarce, which is likely a function of the proximity to primary sources of raw-material. The abundance of high-quality chert rocks in the project area was likely the resource that attracted groups there and resulted in them leaving behavioural traces in the form of stone artefacts.

CTS Heritage

16 Edison Way, Century City, Cape Town

Tel: +27 (0)87 073 5739 Email: info@ctsheritage.com Web: www.ctsheritage.com



CTS HERITAGE

Indeed the majority of the stone artefacts identified look to be the result of expedient ‘testing’ of rocks for quality, and the so-called products in many of the scatters were likely transported away. In this sense no evidence of substantial densities of finds or occupational debris were identified, and the stone artefacts present are evidenced to have been produced by mobile groups moving through the area. The raw-materials exploited for stone artefact manufacture were exclusively local cherts. The presence of primary and secondary sources of chert in association with stone artefacts, are suggestive of the landscape resources that probably drew Stone Age groups to the region over an extended expanse of human evolutionary history.”

It is likely that a similar archaeological signature will be present within the area proposed for this development and as such, a field survey to assess impacts to archaeological heritage resources is recommended.

Palaeontology

The proposed development is located on geological deposits belonging to the Monte Christo Formation of the Chuniespoort Group. The Monte Christo Formation is within the Malmani Subgroup. These deposits have a very high sensitivity for impacts to palaeontological resources. This group is known to contain a range of shallow marine to intertidal stromatolites (domes, columns *etc*) and organic-walled microfossils. In addition, it is within this group that fossiliferous Late Cenozoic cave breccias have been identified, such as within the Cradle of Humankind region. A development located approximately 15km away within the same geology was surveyed on foot by Bamford et al. (2019) as part of the Heritage Impact Assessment completed for the Lichtenburg PV facilities in 2019.

According to Bamford (2019), the project area lies on rocks of the Malmani Subgroup, Chuniespoort Group. The Malmani Subgroup is up to 2000m thick and comprises five formations distinguished by the amount of chert, stromatolite morphology, intercalated shales and erosion surfaces (Eriksson et al., 2006). The basal Oaktree Formation overlies the Black Reef Formation, and is made up of carbonaceous shales, stromatolitic dolomites and locally developed quartzites. Above this is the Monte Christo Formation comprising erosive breccia, overlain by stromatolitic and oolitic platformal dolomites. Next is the Lyttleton Formation of shales quartzites and stromatolitic dolomites. The Eccles Formation comprises a series of erosional breccias and the overlying Frisco Formation is made up mostly of stromatolitic dolomites.

The palaeontological sensitivity of the area under consideration is presented in Figure 4a. The site proposed for development is in the Malmani Subgroup which contains a number of stromatolitic dolomites. These were formed in warm shallow sea and are the accumulation of layer upon layer of minerals deposited by blue-green algae (also known as cyanobacteria) and rarely some filamentous algae. Minerals deposited by the algae include calcium carbonate, calcium sulphate and magnesium carbonate. Very rarely are the algal cells preserved in the stromatolites and these are microscopic. Stromatolites are essentially trace fossils and these ones are 2750 to 2650 million years old and very abundant. Based on the nature of the project, surface activities may impact upon the fossil heritage if preserved in the development footprint. The geological structures suggest that the rocks are much too old to contain fossils other than blue-green algae. Taking account of the defined criteria, the potential impact to fossil heritage resources is negligible to extremely low.

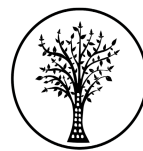
Cumulative Impacts

The proposed development is located within a belt of approved renewable energy facilities. In terms of impacts to heritage resources, it is preferred that this kind of infrastructure development is concentrated in one location and is not sprawled across an otherwise culturally significant landscape. The proposed development is therefore unlikely to result in unacceptable risk or loss, nor will the proposed development result in a complete change to the sense of place of the area or result in an unacceptable increase in impact.

CTS Heritage

16 Edison Way, Century City, Cape Town

Tel: +27 (0)87 073 5739 Email: info@ctsheritage.com Web: www.ctsheritage.com



CTS HERITAGE

9. Scoping Assessment

Impact Destruction of significant heritage resources			
Issue	Nature of Impact	Extent of Impact	No-go Areas
Destruction of archaeological heritage	Direct impact to archaeological heritage of scientific significance	Within project boundary	None identified at this stage
Destruction of palaeontological heritage	Direct impact to palaeontological heritage of scientific significance	Within project boundary	None identified at this stage
Negative impact to significant cultural landscapes	Direct and indirect impact to significant cultural landscapes and cultural landscape elements	Regional	None identified at this stage
Description of expected significance of impact Field assessment will determine the significance of the resources likely to be impacted. Impacts can be minimised through the implementation of appropriate mitigation measures.			
Gaps in knowledge & recommendations for further study The project area and the area more broadly have not been subjected to many heritage impact assessments and therefore substantial gaps in knowledge exist. Field assessment will fill these gaps.			
Recommendations with regards to general field surveys Archaeological field surveys must provide sufficient ground-coverage of the areas to be developed to be able to determine the nature of the resources likely to be impacted. Palaeontological and cultural landscape field surveys will target sensitive geological and cultural landscape features.			

CTS Heritage

16 Edison Way, Century City, Cape Town

Tel: +27 (0)87 073 5739 Email: info@ctsheritage.com Web: www.ctsheritage.com



CTS HERITAGE

APPENDIX 1

List of heritage resources within close proximity to the development area

Site ID	Site no	Full Site Name	Site Type	Grading
32832	AEPC 3	Steenkoolspruit farm, Ogies Emalahleni Mpumalanga Province MAPPED INCORRECTLY ON SAHRIS	Burial Grounds & Graves	Grade IIIa
26803	9/2/235/0005	Nerderduitse Gereformeerde Church, 27 Gerrit Maritz Street, Lichtenburg	Building	Grade II
51468	WSF 01	Watershed Solar Facility 01	Artefacts	Grade IIIc
51470	WSF 02	Watershed Solar Facility 02	Artefacts	Grade IIIc
51472	WSF 03	Watershed Solar Facility 03	Burial Grounds & Graves	Grade IIIa
128308	Grave of Vic Hamman	Grave of Vic Hamman	Burial Grounds & Graves	
138616	FHDN-001	FARM HOUTHAALDOORNS 2	Palaeontological	
138617	FHDN-002	FARM HOUTHAALDOORNS 2	Palaeontological	
138618	FHDN-003	FARM HOUTHAALDOORNS 2	Palaeontological	
138619	FHDN-004	FARM HOUTHAALDOORNS 2	Palaeontological	
138620	FHDN-005	FARM HOUTHAALDOORNS 2	Palaeontological	
138621	FHDN-006	FARM HOUTHAALDOORNS 2	Palaeontological	
138622	FHDN-007	FARM HOUTHAALDOORNS 2	Palaeontological	
138623	FHDN-008	FARM HOUTHAALDOORNS 2	Palaeontological	
138624	FHDN-009	FARM HOUTHAALDOORNS 2	Palaeontological	

CTS Heritage

16 Edison Way, Century City, Cape Town

Tel: +27 (0)87 073 5739 Email: info@ctsheritage.com Web: www.ctsheritage.com



CTS HERITAGE

138625	FHDN-010	FARM HOUTHAALDOORNS 2	Palaeontological	
138626	FHDN-011	FARM HOUTHAALDOORNS 2	Palaeontological	
138627	FHDN-012	FARM HOUTHAALDOORNS 2	Palaeontological	
138628	FHDN-013	FARM HOUTHAALDOORNS 2	Burial Grounds & Graves	Grade IIIa
130171	2626AA/ Solar/ Farm Zamenkomst 04/ Site 1	Old farm house	Structures, Structures	Grade IIIc
128694	ZKT1	Zamenkomst 1	Building	Grade IIIc
137491	Gereformeerde kerk Lichtenburg	Gereformeerde kerk Lichtenburg	Monuments & Memorials	

CTS Heritage

16 Edison Way, Century City, Cape Town

Tel: +27 (0)87 073 5739 Email: info@ctsheritage.com Web: www.ctsheritage.com



CTS HERITAGE

APPENDIX 2

Reference List with relevant AIAs and PIAs

Heritage Impact Assessments				
Nid	Report Type	Author/s	Date	Title
6237	AIA Phase 1	Johnny Van Schalkwyk, Robert de Jong, S Smith	01/08/1995	Reconnaissance of Remaining Cultural Resources in the Bakerville Diamond Fields
8330	AIA Phase 1	Francois P Coetzee	01/03/2008	Cultural Heritage Survey of the PPC Slurry Operation, near Zeerust, North West Province
8455	HIA Phase 1	Udo Kusel	25/07/2008	Cultural Heritage Resources Impact Assessment of Portion 151 of Lichtenburg Town and Townlands 27 IP (Lichtenburg Extension 10) North West Province
8531	HIA Phase 1	Johnny Van Schalkwyk	01/11/2008	Heritage Impact Report for the Proposed 88 kV Power Line from Watershed Substation, Lichtenburg, to the Mmabatho Substation, North West Gauteng Province
50047	HIA Phase 1	M Hutten	01/05/2012	Heritage Impact Assessment for the Proposed Lichtenburg Solar Park North of Lichtenburg, North West Province
50048	PIA Phase 1	Bruce Rubidge	14/07/2012	Palaeontological Assessment - Lichtenburg Solar Park
110338	HIA Phase 1	Julius CC Pistorius	01/06/2011	A PHASE I HERITAGE IMPACT ASSESSMENT (HIA) STUDY FOR THE PROPOSED MAFIKENG CEMENT PROJECT NEAR ITSOSENG IN THE NORTH-WEST PROVINCE OF SOUTH AFRICA
123075	Heritage Scoping	Jaco van der Walt	12/11/2013	Archaeological Impact Assessment Report
138895		Jaco van der Walt, John E Almond	14/10/2013	Archaeological Impact Assessment for the Proposed Hibernia Solar Project near the town of Lichtenburg in the North West Province of South Africa & Paleontological Report: Recommended Exemption From Further Palaeontological Studies: Proposed Hibernia Pv S

CTS Heritage

16 Edison Way, Century City, Cape Town

Tel: +27 (0)87 073 5739 Email: info@ctsheritage.com Web: www.ctsheritage.com



CTS HERITAGE

Additional Reports:

- Lavin, J. 2018. HERITAGE IMPACT ASSESSMENT In terms of Section 38(8) of the NHRA for the DEVELOPMENT OF THE LICHTENBURG 1, 2 and 3 PV SOLAR ENERGY FACILITY AND ASSOCIATED INFRASTRUCTURE ON A SITE NEAR LICHTENBURG, NORTH WEST PROVINCE. Unpublished Report.
- Lavin, J. 2018. ARCHAEOLOGICAL IMPACT ASSESSMENT In terms of Section 38(8) of the NHRA for the DEVELOPMENT OF THE LICHTENBURG 1, 2 and 3 PV SOLAR ENERGY FACILITY AND ASSOCIATED INFRASTRUCTURE ON A SITE NEAR LICHTENBURG, NORTH WEST PROVINCE. Unpublished Report.
- Bamford, M. 2018. Palaeontological Impact Assessment for the proposed DEVELOPMENT OF THE LICHTENBURG 1, 2 and 3 PV SOLAR ENERGY FACILITY AND ASSOCIATED INFRASTRUCTURE ON A SITE NEAR LICHTENBURG, NORTH WEST PROVINCE. Unpublished Report.
- Mucina, L. and Rutherford, M.C., 2006. *The vegetation of South Africa, Lesotho and Swaziland*. South African National Biodiversity Institute.

CTS Heritage

16 Edison Way, Century City, Cape Town

Tel: +27 (0)87 073 5739 Email: info@ctsheritage.com Web: www.ctsheritage.com



CTS HERITAGE

APPENDIX 3 - Keys/Guides

Key/Guide to Acronyms

AIA	Archaeological Impact Assessment
DARD	Department of Agriculture and Rural Development (KwaZulu-Natal)
DEA	Department of Environmental Affairs (National)
DEADP	Department of Environmental Affairs and Development Planning (Western Cape)
DEDEAT	Department of Economic Development, Environmental Affairs and Tourism (Eastern Cape)
DEDECT	Department of Economic Development, Environment, Conservation and Tourism (North West)
DEDT	Department of Economic Development and Tourism (Mpumalanga)
DEDTEA	Department of economic Development, Tourism and Environmental Affairs (Free State)
DENC	Department of Environment and Nature Conservation (Northern Cape)
DMR	Department of Mineral Resources (National)
GDARD	Gauteng Department of Agriculture and Rural Development (Gauteng)
HIA	Heritage Impact Assessment
LEDET	Department of Economic Development, Environment and Tourism (Limpopo)
MPRDA	Mineral and Petroleum Resources Development Act, no 28 of 2002
NEMA	National Environmental Management Act, no 107 of 1998
NHRA	National Heritage Resources Act, no 25 of 1999
PIA	Palaeontological Impact Assessment
SAHRA	South African Heritage Resources Agency
SAHRIS	South African Heritage Resources Information System
VIA	Visual Impact Assessment

Full guide to Palaeosensitivity Map legend

	RED:	VERY HIGH - field assessment and protocol for finds is required
	ORANGE/YELLOW:	HIGH - desktop study is required and based on the outcome of the desktop study, a field assessment is likely
	GREEN:	MODERATE - desktop study is required
	BLUE/PURPLE:	LOW - no palaeontological studies are required however a protocol for chance finds is required
	GREY:	INSIGNIFICANT/ZERO - no palaeontological studies are required
	WHITE/CLEAR:	UNKNOWN - these areas will require a minimum of a desktop study.

CTS Heritage

16 Edison Way, Century City, Cape Town

Tel: +27 (0)87 073 5739 Email: info@ctsheritage.com Web: www.ctsheritage.com



CTS HERITAGE

APPENDIX 4 - Methodology

The Heritage Screener summarises the heritage impact assessments and studies previously undertaken within the area of the proposed development and its surroundings. Heritage resources identified in these reports are assessed by our team during the screening process.

The heritage resources will be described both in terms of **type**:

- Group 1: Archaeological, Underwater, Palaeontological and Geological sites, Meteorites, and Battlefields
- Group 2: Structures, Monuments and Memorials
- Group 3: Burial Grounds and Graves, Living Heritage, Sacred and Natural sites
- Group 4: Cultural Landscapes, Conservation Areas and Scenic routes

and **significance** (Grade I, II, IIIa, b or c, ungraded), as determined by the author of the original heritage impact assessment report or by formal grading and/or protection by the heritage authorities.

Sites identified and mapped during research projects will also be considered.

DETERMINATION OF THE EXTENT OF THE INCLUSION ZONE TO BE TAKEN INTO CONSIDERATION

The extent of the inclusion zone to be considered for the Heritage Screener will be determined by CTS based on:

- the size of the development,
- the number and outcome of previous surveys existing in the area
- the potential cumulative impact of the application.

The inclusion zone will be considered as the region within a maximum distance of 50 km from the boundary of the proposed development.

DETERMINATION OF THE PALAEOLOGICAL SENSITIVITY

The possible impact of the proposed development on palaeontological resources is gauged by:

- reviewing the fossil sensitivity maps available on the South African Heritage Resources Information System (SAHRIS)
- considering the nature of the proposed development
- when available, taking information provided by the applicant related to the geological background of the area into account

DETERMINATION OF THE COVERAGE RATING ASCRIBED TO A REPORT POLYGON

Each report assessed for the compilation of the Heritage Screener is colour-coded according to the level of coverage accomplished. The extent of the surveyed coverage is labeled in three categories, namely low, medium and high. In most instances the extent of the map corresponds to the extent of the development for which the specific report was undertaken.

CTS Heritage

16 Edison Way, Century City, Cape Town

Tel: +27 (0)87 073 5739 Email: info@ctsheritage.com Web: www.ctsheritage.com



CTS HERITAGE

Low coverage will be used for:

- desktop studies where no field assessment of the area was undertaken;
- reports where the sites are listed and described but no GPS coordinates were provided.
- older reports with GPS coordinates with low accuracy ratings;
- reports where the entire property was mapped, but only a small/limited area was surveyed.
- uploads on the National Inventory which are not properly mapped.

Medium coverage will be used for

- reports for which a field survey was undertaken but the area was not extensively covered. This may apply to instances where some impediments did not allow for full coverage such as thick vegetation, etc.
- reports for which the entire property was mapped, but only a specific area was surveyed thoroughly. This is differentiated from low ratings listed above when these surveys cover up to around 50% of the property.

High coverage will be used for

- reports where the area highlighted in the map was extensively surveyed as shown by the GPS track coordinates. This category will also apply to permit reports.

RECOMMENDATION GUIDE

The Heritage Screener includes a set of recommendations to the applicant based on whether an impact on heritage resources is anticipated. One of three possible recommendations is formulated:

(1) The heritage resources in the area proposed for development are sufficiently recorded - The surveys undertaken in the area adequately captured the heritage resources. There are no known sites which require mitigation or management plans. No further heritage work is recommended for the proposed development.

This recommendation is made when:

- enough work has been undertaken in the area
- it is the professional opinion of CTS that the area has already been assessed adequately from a heritage perspective for the type of development proposed

(2) The heritage resources and the area proposed for development are only partially recorded - The surveys undertaken in the area have not adequately captured the heritage resources and/or there are sites which require mitigation or management plans. Further specific heritage work is recommended for the proposed development.

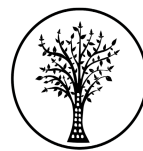
This recommendation is made in instances in which there are already some studies undertaken in the area and/or in the adjacent area for the proposed development. Further studies in a limited HIA may include:

- improvement on some components of the heritage assessments already undertaken, for instance with a renewed field survey and/or with a specific specialist for the type of heritage resources expected in the area
- compilation of a report for a component of a heritage impact assessment not already undertaken in the area

CTS Heritage

16 Edison Way, Century City, Cape Town

Tel: +27 (0)87 073 5739 Email: info@ctsheritage.com Web: www.ctsheritage.com



CTS HERITAGE

- undertaking mitigation measures requested in previous assessments/records of decision.

(3) The heritage resources within the area proposed for the development have not been adequately surveyed yet - Few or no surveys have been undertaken in the area proposed for development. A full Heritage Impact Assessment with a detailed field component is recommended for the proposed development.

Note:

The responsibility for generating a response detailing the requirements for the development lies with the heritage authority. However, since the methodology utilised for the compilation of the Heritage Screeners is thorough and consistent, contradictory outcomes to the recommendations made by CTS should rarely occur. Should a discrepancy arise, CTS will immediately take up the matter with the heritage authority to clarify the dispute.

APPENDIX 5 -Summary of Specialist Expertise

Jenna Lavin, an archaeologist with an MSc in Archaeology and Palaeoenvironments, and currently completing an MPhil in Conservation Management, heads up the heritage division of the organisation since 2016, and has a wealth of experience in the heritage management sector. Jenna's previous position as the Assistant Director for Policy, Research and Planning at Heritage Western Cape has provided her with an in-depth understanding of national and international heritage legislation. Her 8 years of experience at various heritage authorities in South Africa means that she has dealt extensively with permitting, policy formulation, compliance and heritage management at national and provincial level and has also been heavily involved in rolling out training on SAHRIS to the Provincial Heritage Resources Authorities and local authorities.

Jenna is on the Executive Committee of the Association of Professional Heritage Practitioners (APHP), and is also an active member of the International Committee on Monuments and Sites (ICOMOS) as well as the International Committee on Archaeological Heritage Management (ICAHM). In addition, Jenna has been a member of the Association of Southern African Professional Archaeologists (ASAPA) since 2009. Recently, Jenna has been responsible for conducting training in how to write Wikipedia articles for the Africa Centre's WikiAfrica project.

Since 2016, Jenna has drafted over 100 Heritage Impact Assessments and Screening Assessments throughout South Africa.

CTS Heritage

16 Edison Way, Century City, Cape Town

Tel: +27 (0)87 073 5739 Email: info@ctsheritage.com Web: www.ctsheritage.com