

Exemption of Phase 1 Archaeological and Palaeontological Impact Assessment for a 3 km long 132 kV Power line on Farm Kwaggafontein 2300, Bloemfontein, Free State Province*.

Site: Farm Kwaggafontein 2300, Bloemfontein

Map Ref.: 2926 AA Bloemfontein

General Site Coordinates: 29° 6'5.82"S 26° 6'28.48"E to 29° 5'57.11"S 26° 7'53.21"E

Enviroworks Environmental Consultants requested an archaeological and palaeontological impact assessment for a proposed new 3km long 132 kV power line and substation near the suburb of Langenhovenpark, Bloemfontein. The proposed power line will be located next to Koppie Road, on the farm Kwaggafontein 2300 (**Fig. 1 & 2**). It will run beside an existing power line where prior construction activities, including agricultural activities and the establishment of the Bainsvlei Treatment Works (29° 6'3.01"S 26° 6'54.69"E) have noticeably impacted on the environment in the area (**Fig. 3**).

The route is situated in the outcrop area of Beaufort Group (Adelaide Subgroup) strata, assigned to the *Dicynodon* Assemblage Zone (vertebrate biozone). The bedrock sediments are capped by a thick mantle Quaternary to Recent residual deposits and agricultural soils.

Potential **archaeological** impact along the proposed route is considered to be non-existent. The soil overburden (residual deposits) is not palaeontologically vulnerable and the likelihood of **palaeontological** impact on underlying bedrock sediments below the recent agricultural overburden is considered to be extremely low.

It is recommended that that the proposed development is exempted from a Phase 1 archaeological and palaeontological impact assessment.

Yours truly,

A handwritten signature in black ink, appearing to read 'L. Rossouw'. The signature is fluid and cursive, with a large initial 'L' and 'R'.

Dr Lloyd Rossouw
National Museum
PO Box 266
Bloemfontein
9300

* Report prepared for Enviroworks, Private Bag X01, Brandhof , 9324

2013/09/03

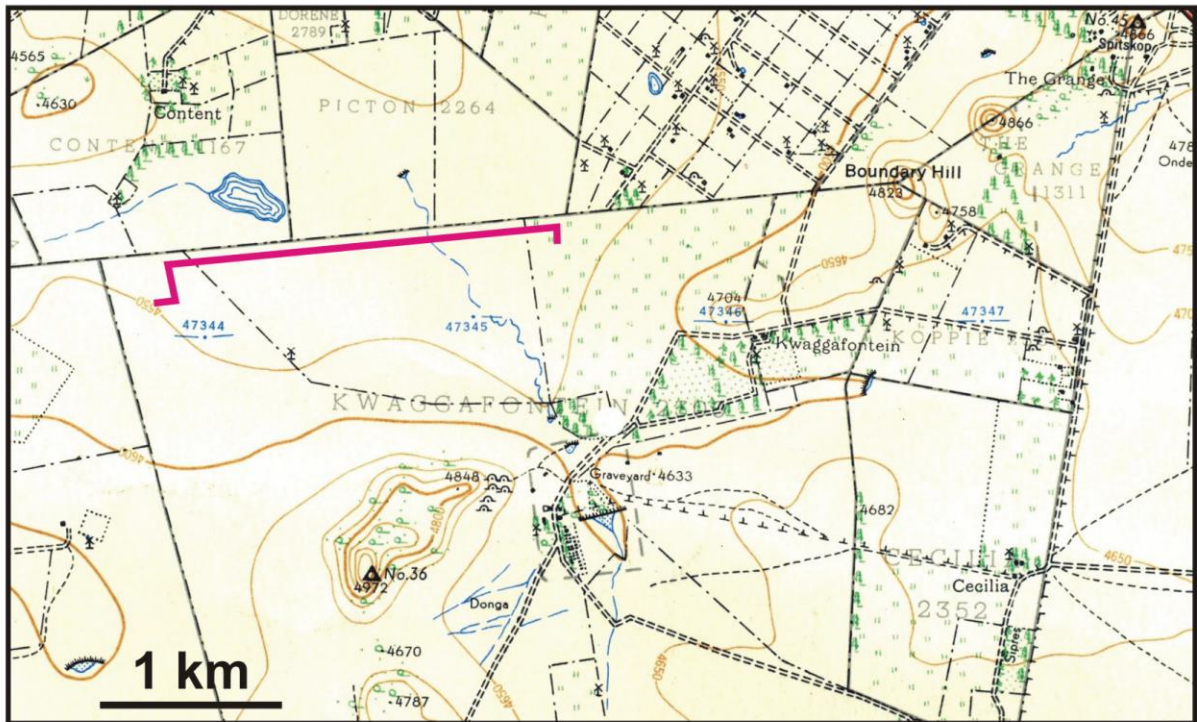
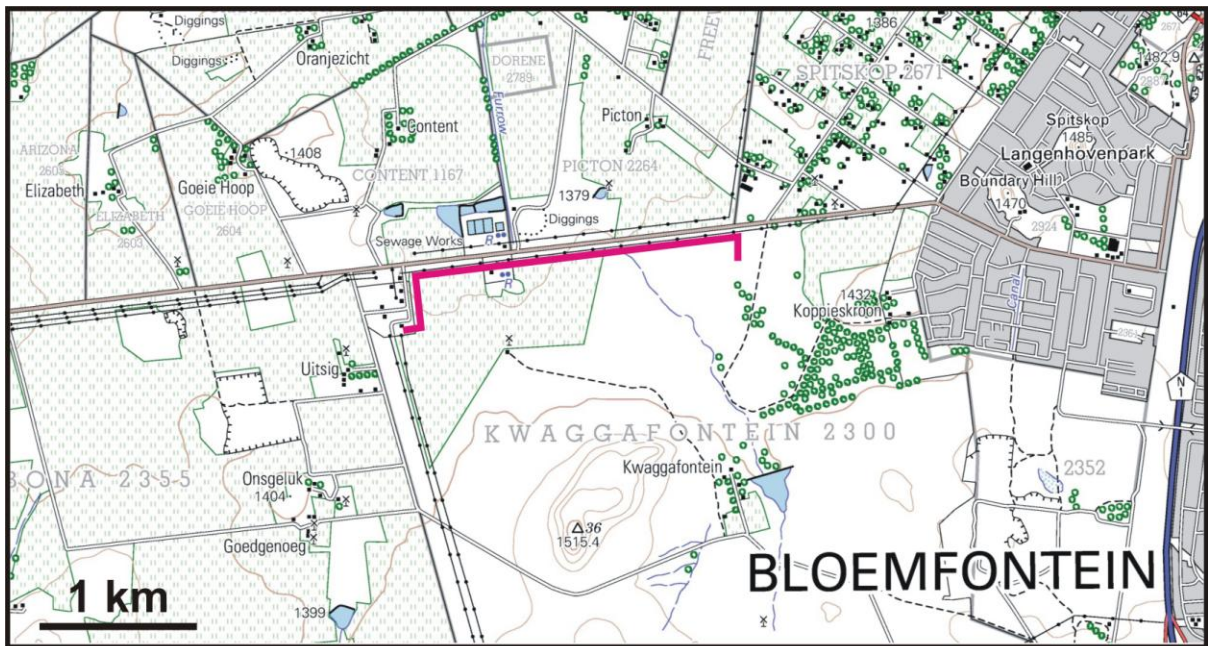


Figure 1. Map locality of the proposed power line shown on portions of the 1993 version (above) and 1951 version (below) topographic maps 2926 AA Bloemfontein (1:50 000 scale).



Figure 2. Aerial view of the proposed 3 km long power line development.



Figure 3. General view of the proposed route: Kwaggafontein Substation, western terminal (A), looking towards the treatment works from Koppie Road (B) and eastern terminal, general area (C).