



Engineering & Construction  
ENGINEERING

CODICE - CODE  
D.73.ZA.W.74565.14.017.00

PAGINA - PAGE  
1 di/of 9

TITOLO - TITLE

LINGUE DISPONIBILI - AVAILABLE LANGUAGE: IT

## SPECIFICA TECNICA

### 132kV OHL PROFILE SHEETS

D.73.ZA.W.74565.14.017.00

### TEMPLATED PROFILE Sheet 1 to 8

### Route Index Map

**ISSUED FOR  
CONSTRUCTION**

C W Hoffman

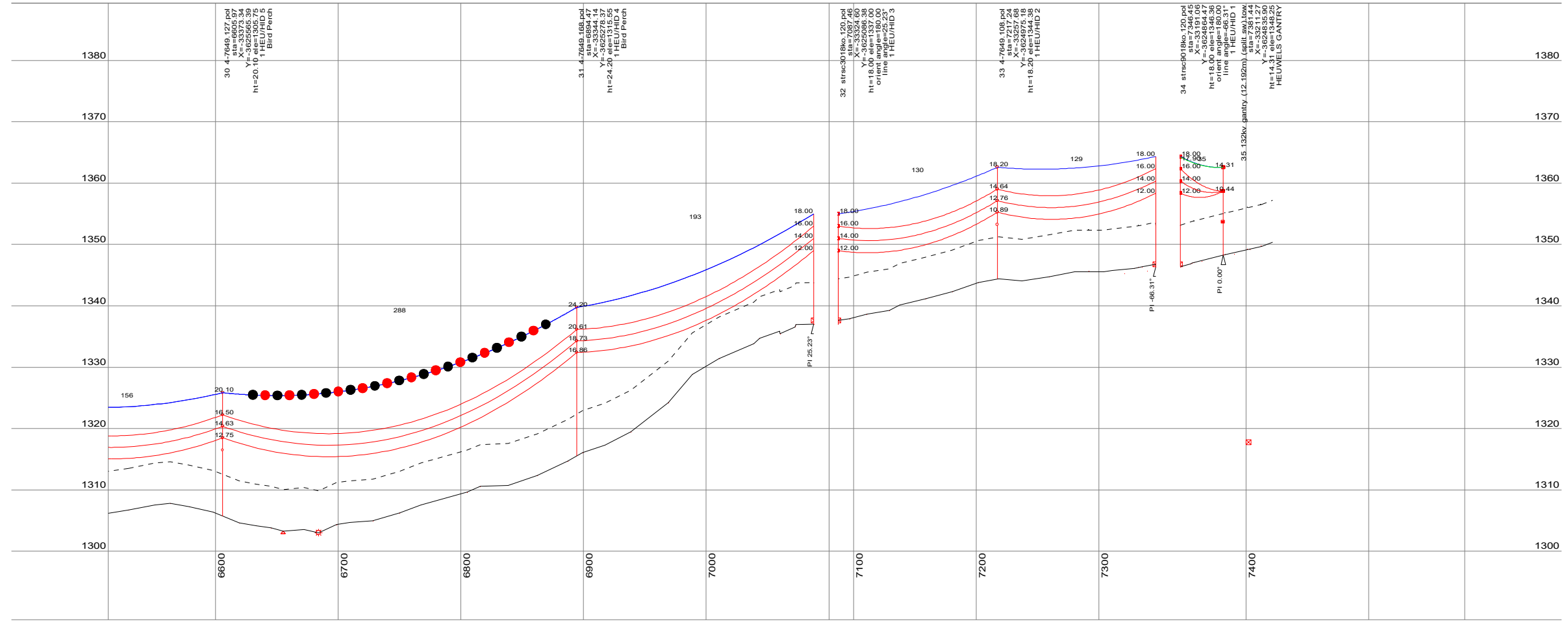
<b>00</b>	18/11/2019	<b>Issue for Construction (IFC) - 132kV OHL Profile Drawings and Route Map</b>	Aurecon	S Paliso	C Hoffman
<b>0A</b>	17/09/2019	<b>Issue for Validation - 132kV OHL Profile Drawings and Route Map</b>	Aurecon	J Kriel	C Hoffman
<b>REV. REV.</b>	<b>DATA DATE</b>	<b>DESCRIZIONE DESCRIPTION</b>	<b>PREPARATO PREPARED</b>	<b>CONTROLLATO CHECKED</b>	<b>APPROVATO APPROVED</b>
<b>Scopo di utilizzo / Utilization Scope</b>					
<b>Eskom Selfbuild Works</b>			S Mehlomakulu	S Mehlomakulu	Shahil Juggernath
		<b>EGP DATA DATE</b>	<b>EGP VERIFICATO EGP VERIFIED</b>	<b>EGP CONTRIBUTI CONTRIBUTED</b>	<b>EGP VALIDATO EGP VALIDATED</b>
<b>PROGETTO / IMPIANTO PROJECT / PLANT</b>		<b>CODICE - CODE</b>			
<b>Soetwater Wind Farm</b>		<b>TIPO TYPE</b>	<b>EMITT. ISSUER</b>	<b>PAESE COUNTRY</b>	<b>TEC. TEC.</b>
		<b>IMPIANTO PLANT</b>	<b>SISTEMA SYSTEM</b>	<b>PROGRESSIVO PROGRESSIVE</b>	<b>REV. REV.</b>
		<b>D 7 3 Z A W 7 4 5 6 5 1 4 0 1 7 0 0</b>			
<b>CLASSIFICAZIONE CLASSIFICATION</b>		<input type="checkbox"/> PUBBLICO PUBLIC	<input checked="" type="checkbox"/> AZIENDALE COMPANY	<input type="checkbox"/> RISERVATO CONFIDENTIAL	<input type="checkbox"/> RISTRETTO RESTRICTED
		<b>RIF. ARCHIVIO ARCHIVE ID</b>			<b>00000000</b>

Questo documento contiene informazioni di proprietà di Enel Green Power s.p.a e deve essere utilizzato esclusivamente dal destinatario in relazione alle finalità per le quali è stato ricevuto. E' vietata qualsiasi forma di riproduzione o di divulgazione senza l'esplicito consenso di Enel Green Power s.p.a

*This document is property of Enel Green Power s.p.a It is strictly forbidden to reproduce this document, in whole or in part, and to provide to others any related information without the previous written consent by Enel Green Power s.p.a*



19 - 32, 0KV, ash-d(e)bb 48 smf (aa a20aa 149.20 - 16.1), Ruling Span 242 (m), Catenary 2100 (m) at 15 (deg C) Creep  
 32 - 34, 0KV, ash-d(e)bb 48 smf (aa a20aa 149.20 - 16.1), Ruling Span 129 (m), Catenary 2100 (m) at 15 (deg C) Creep  
 34 - 35, 0KV, ash-d(e)bb 48 smf (aa a20aa 149.20 - 16.1), Ruling Span 129 (m), Catenary 2100 (m) at 15 (deg C) Creep  
 34 - 35, 0KV, ash-d(e)bb 48 smf (aa a20aa 149.20 - 16.1), Ruling Span 129 (m), Catenary 2100 (m) at 15 (deg C) Creep  
 19 - 32, 132KV, kinbird acsr-wir, Ruling Span 242 (m), Catenary 1800 (m) at 15 (deg C) Creep  
 32 - 34, 132KV, kinbird acsr-wir, Ruling Span 129 (m), Catenary 1800 (m) at 15 (deg C) Creep  
 34 - 35, 132KV, kinbird acsr-wir, Ruling Span 35 (m), Catenary 300 (m) at 15 (deg C) Creep



PLS-CADD Drawing

- ⊗ Railway Line Crossing
- 🏠 Building
- △ Road Crossing
- ⊕ Railway Line
- ✕ Telephone Pole
- MV Pole
- Clearance Line
- Servitude Width 31m
- Contour Line
- Farm boundary
- Bird Diverters

40.0 m Horiz. Scale  
 8.0 m Vert. Scale

**aurecon**  
CAPE TOWN

1 Century City Drive, Waterford Precinct, Century City 7441  
P O Box 494, Cape Town, South Africa  
Email : capetown@arecongroup.com

Tel: +27 526 9400  
Fax : +27 526 9500

CLIENT

**aurecon**  
Issued for Construction  
Fayaz Ali Sattar (Pr Eng 20110103)  
Date: 15 Nov 2019

REV	DATE	REVISION DETAILS	APPROVED
0	12/06/19	ISSUED FOR COMMENT	F ALI SATTAR
1	9/10/19	BIRD DIVERTERS ADDED	F A SATTAR
2	15/11/19	ISSUED FOR CONSTRUCTION	F A SATTAR

SCALE	SIZE	FOR COMMENT
AS SHOWN	A3	FOR COMMENT

DRAWN	DESIGNED	CHECKED	APPROVED	DATE
T MATIZA	F A SATTAR	F A SATTAR	FA SATTAR	15 NOV 2019

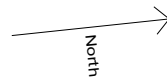
PROJECT  
132KV  
HIDDEN VALLEY - HEUWELS  
OVERHEAD POWER LINE

TITLE  
TEMPLATED PROFILE  
SHEET 8 OF 8

PROJECT No.	WBS	TYPE	DISC	NUMBER	REV
112177	OHL	DRG	ES	8	2

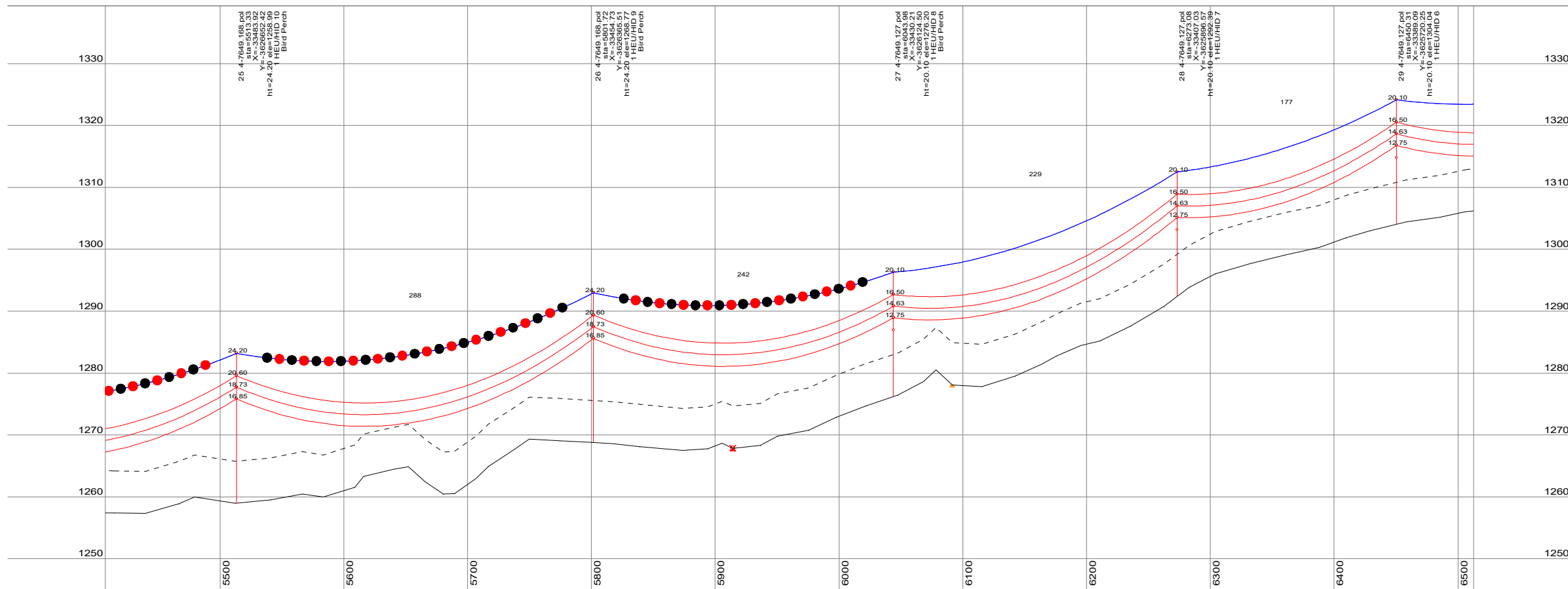


19 - 32, 0kV, asih-d(e)bb 48 smf (aa a20aa 149.20 - 16.1), Ruling Span 242 (m), Catenary 2100 (m) at 15 (deg C) Creep  
 19 - 32, 132kV, kingbird\_acsr.wir, Ruling Span 242 (m), Catenary 1800 (m) at 15 (deg C) Creep



- Railway Line Crossing
- Building
- Road Crossing
- Railway Line
- Telephone Pole
- MV Pole
- Clearance Line
- Servitude Width 31m
- Contour Line
- Farm boundary
- Bird Diverters

40.0 m Horiz. Scale  
 8.0 m Vert. Scale



**aurecon**  
 CAPE TOWN

1 Century City Drive, Waterford Precinct, Century City 7441  
 P O Box 494, Cape Town, South Africa  
 Email : capetown@aurecongroup.com

Tel : +27 526 9400  
 Fax : +27 526 9500

**aurecon**  
 Issued for Construction  
 Fayaz Ali Sattar (Pr Eng 20110103)  
 Date: 15 Nov 2019

REV	DATE	REVISION DETAILS	APPROVED
0	12/06/19	ISSUED FOR COMMENT	F ALI SATTAR
1	9/10/19	BIRD DIVERTERS ADDED	F A SATTAR
2	15/11/19	ISSUED FOR CONSTRUCTION	F A SATTAR

SCALE	SIZE	FOR COMMENT
AS SHOWN	A3	FOR COMMENT

DRAWN	DESIGNED	CHECKED	APPROVED	DATE
T MATIZA	F A SATTAR	F A SATTAR	FA SATTAR	15 NOV 2019

PROJECT  
 132KV  
 HIDDEN VALLEY - HEUWELS  
 OVERHEAD POWER LINE

TITLE  
 TEMPLATED PROFILE  
 SHEET 7 OF 8

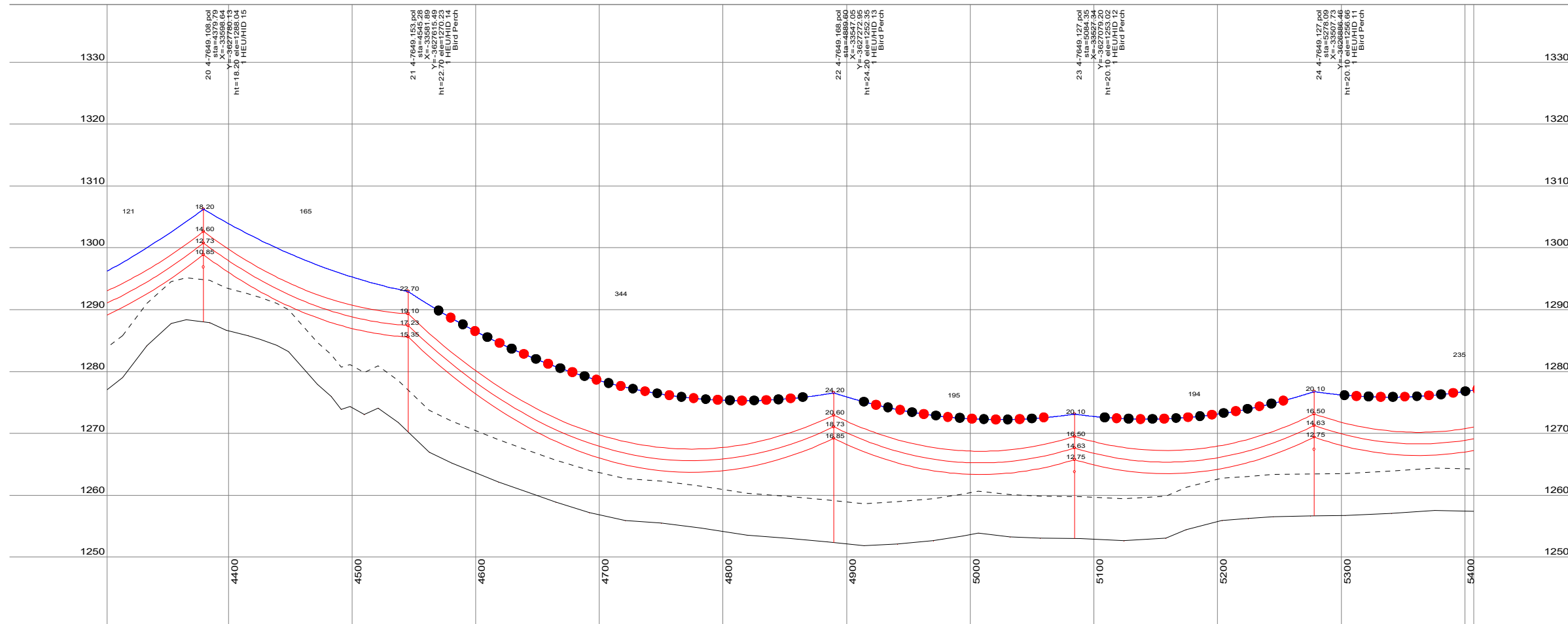
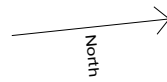
PROJECT No.	WBS	TYPE	DESC	NUMBER	REV
112177	OHL	DRG	ES	7	2

- Railway Line Crossing
- Building
- Road Crossing
- Railway Line
- Telephone Pole
- MV Pole
- Clearance Line
- Servitude Width 31m
- Contour Line
- Farm boundary
- Bird Diverters

40.0 m Horiz. Scale  
8.0 m Vert. Scale



19 - 32, 0kV, ash-d(e)bb 48 smf (aa a20aa 149.20 - 16.1); Ruling Span 242 (m), Catenary 2100 (m) at 15 (deg C) Creep  
19 - 32, 132kV, Kingbird\_acsr.wir, Ruling Span 242 (m), Catenary 1800 (m) at 15 (deg C) Creep



**aurecon**  
CAPE TOWN

1 Century City Drive, Waterford Precinct, Century City 7441 Tel: +27 526 9400  
P O Box 494, Cape Town, South Africa Fax: +27 526 9500  
Email: capetown@arecongroup.com

**aurecon**  
Issued for Construction  
Fayaz Ali Sattar (Pr Eng 20110103)  
Date: 15 Nov 2019

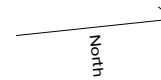
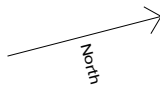
REV	DATE	REVISION DETAILS	APPROVED
0	12/06/19	ISSUED FOR COMMENT	F ALI SATTAR
1	9/10/19	BIRD DIVERTERS ADDED	F A SATTAR
2	15/11/19	ISSUED FOR CONSTRUCTION	F A SATTAR

SCALE	SIZE	FOR COMMENT
AS SHOWN	A3	
DRAWN	DESIGNED	APPROVED
PLS CADD	T MATIZA	
CHECKED	F SATTAR	FA SATTAR
		DATE
		15 NOV 2019

PROJECT  
132KV  
HIDDEN VALLEY - HEUWELS  
OVERHEAD POWER LINE

TITLE  
TEMPLATED PROFILE  
SHEET 6 OF 8

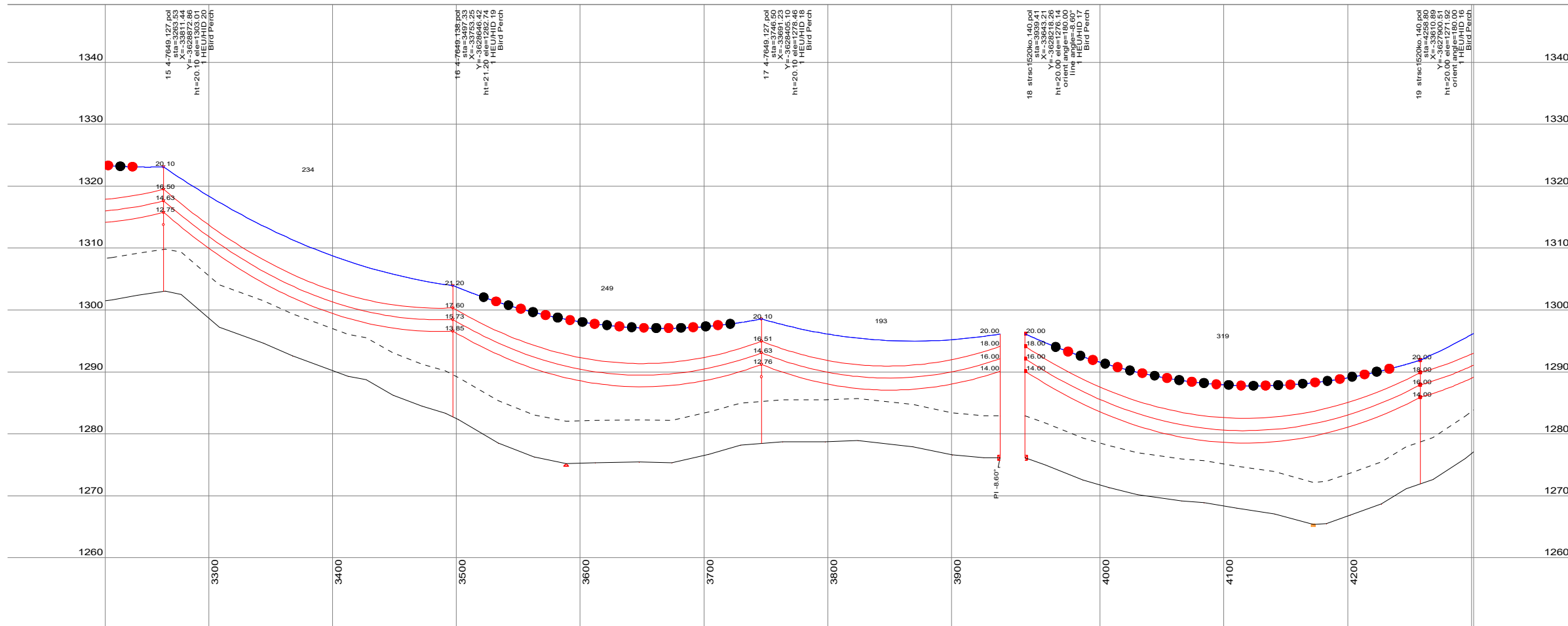
DRAWING NUMBER					
PROJECT No.	WBS	TYPE	DISC	NUMBER	REV
112177	OHL	DRG	ES	6	2



9 - 18, 0kV, ash-(s)bb 48 smf (aa a20sa 149 20 - 16.1), Ruling Span 284 (m), Catenary 2100 (m) at 15 (deg C) Creep  
 18 - 19, 0kV, ash-(s)bb 48 smf (aa a20sa 149 20 - 16.1), Ruling Span 319 (m), Catenary 2100 (m) at 15 (deg C) Creep  
 9 - 18, 132kV, kingbird\_acsr-wir, Ruling Span 284 (m), Catenary 1800 (m) at 15 (deg C) Creep  
 18 - 19, 132kV, kingbird\_acsr-wir, Ruling Span 319 (m), Catenary 1800 (m) at 15 (deg C) Creep  
 18 - 32, 132kV, kingbird\_acsr-wir, Ruling Span 242 (m), Catenary 1800 (m) at 15 (deg C) Creep

- ⊗ Railway Line Crossing
- 🏠 Building
- △ Road Crossing
- ⊕ Railway Line
- ✕ Telephone Pole
- MV Pole
- Clearance Line
- Servitude Width 31m
- Contour Line
- Farm boundary
- Bird Diverters

40.0 m Horiz. Scale  
 8.0 m Vert. Scale



**aurecon**  
 CAPE TOWN

1 Century City Drive, Waterford Precinct, Century City 7441 Tel: +27 526 9400  
 P O Box 494, Cape Town, South Africa Fax: +27 526 9500  
 Email: capetown@aurecongroup.com

**aurecon**  
 Issued for Construction  
 Fayaaz Ali Sattar (Pr Eng 20110103)  
 Date: 15 Nov 2019

REV	DATE	REVISION DETAILS	APPROVED
0	12/06/19	ISSUED FOR COMMENT	F ALI SATTAR
1	9/10/19	BIRD DIVERTERS ADDED	F A SATTAR
2	15/11/19	ISSUED FOR CONSTRUCTION	F A SATTAR

SCALE	SIZE	FOR COMMENT
AS SHOWN	A3	FOR COMMENT
DRAWN	PLS CADD	APPROVED
DESIGNED	T MATIZA	FA SATTAR
CHECKED	F SATTAR	DATE
		15 NOV 2019

PROJECT  
 132KV  
 HIDDEN VALLEY - HEUWELS  
 OVERHEAD POWER LINE

TITLE  
 TEMPLATED PROFILE  
 SHEET 5 OF 8

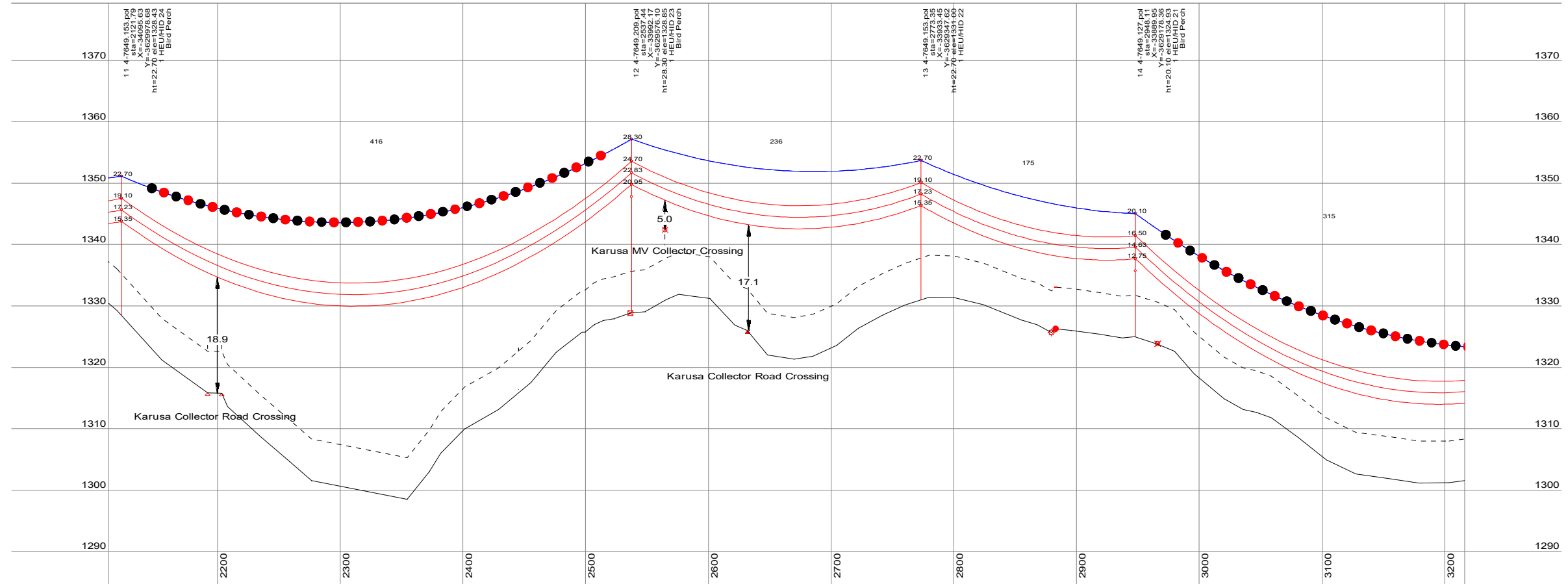
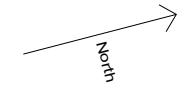
DRAWING NUMBER					
PROJECT No.	WBS	TYPE	DISC	NUMBER	REV
112177	OHL	DRG	ES	5	2



9 - 18, 0kV, aslh-(s)bb 48 smf (aa a20sa 149 20 - 16, 1), Ruling Span 284 (m), Catenary 2100 (m) at 15 (deg C) Creep  
 9 - 18, 132kV, kingbird\_acsr.wir, Ruling Span 284 (m), Catenary 1800 (m) at 15 (deg C) Creep

- ⊗ Railway Line Crossing
- 🏠 Building
- △ Road Crossing
- + Railway Line
- ✕ Telephone Pole
- MV Pole
- Clearance Line
- Servitude Width 31m
- Contour Line
- Farm boundary
- Bird Diverters

40.0 m Horiz. Scale  
 8.0 m Vert. Scale



# aurecon

CAPE TOWN

1 Century City Drive, Waterford Precinct, Century City 7441 Tel: +27 526 9400  
 P O Box 494, Cape Town, South Africa Fax: +27 526 9500  
 Email: capetown@aurecongroup.com

**CLIENT**

Issued for Construction  
 Fayaaz Ali Sattar (Pr Eng 20110103)  
 Date: 15 Nov 2019

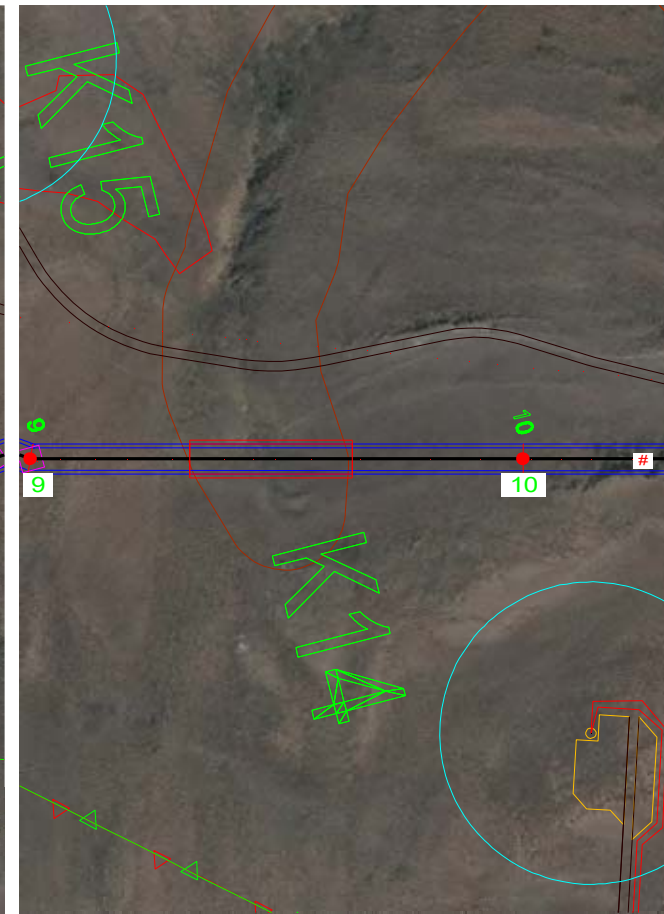
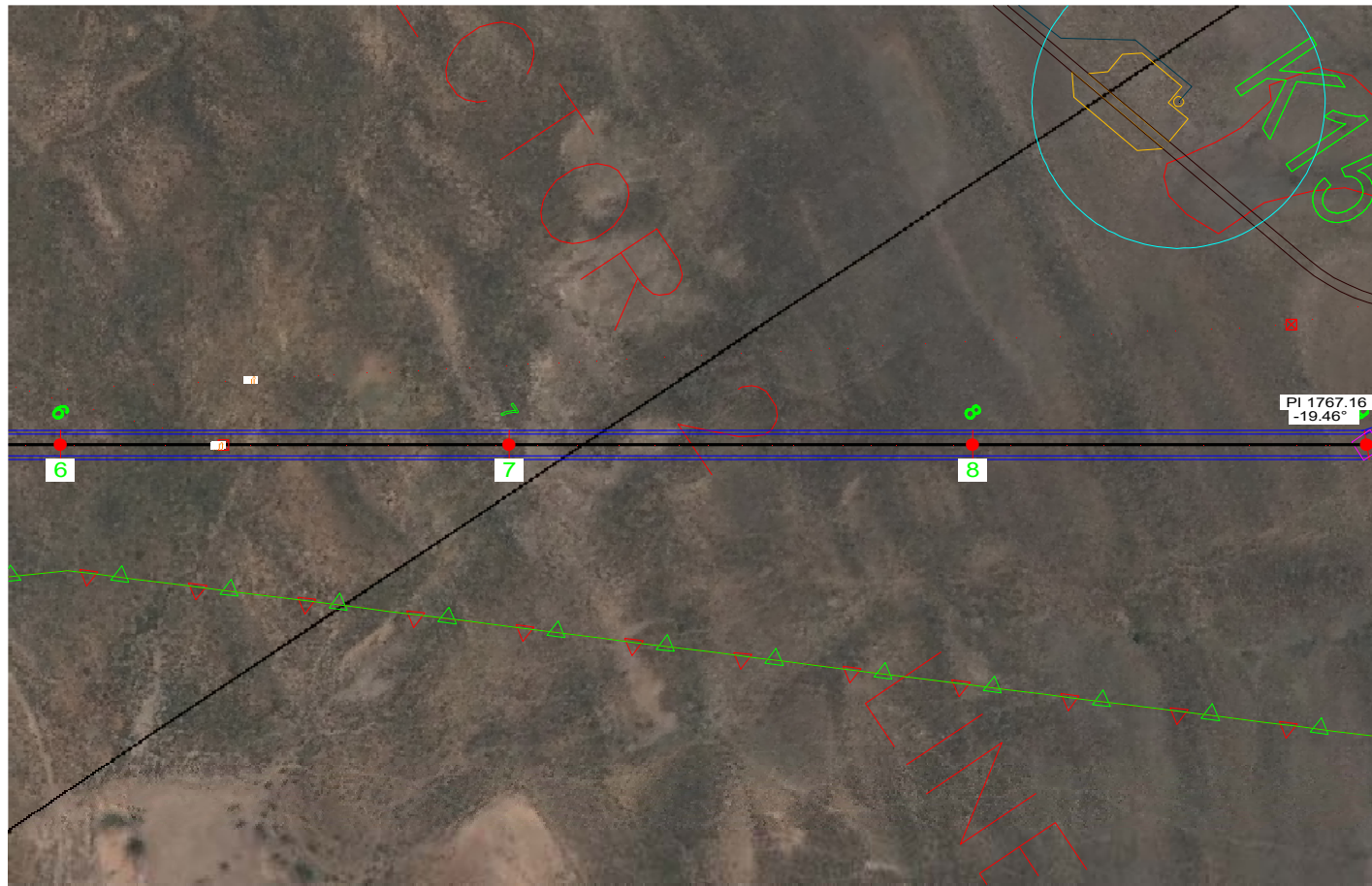
REV	DATE	REVISION DETAILS	APPROVED
0	12/06/19	ISSUED FOR COMMENT	F ALI SATTAR
1	9/10/19	BIRD DIVERTERS ADDED	F A SATTAR
2	15/11/19	ISSUED FOR CONSTRUCTION	F A SATTAR

SCALE	SIZE	FOR COMMENT
AS SHOWN	A3	
DRAWN	PLS CADD	APPROVED
DESIGNED	T MATIZA	FA SATTAR
CHECKED	F SATTAR	
		DATE
		15 NOV 2019

**PROJECT**  
 132KV  
 HIDDEN VALLEY - HEUWELS  
 OVERHEAD POWER LINE

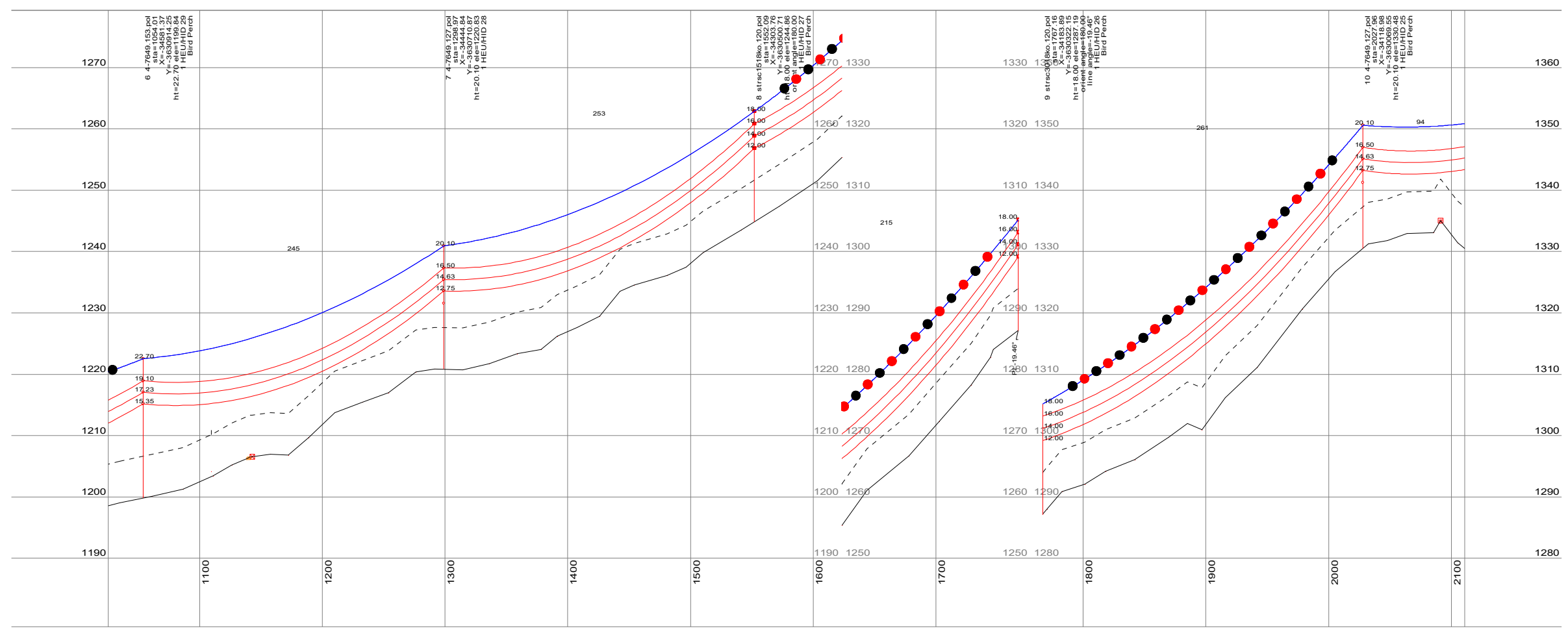
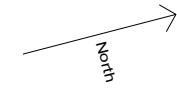
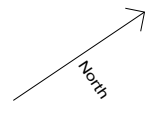
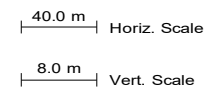
**TITLE**  
 TEMPLATED PROFILE  
 SHEET 4 OF 8

DRAWING NUMBER					
PROJECT No.	WBS	TYPE	DISC	NUMBER	REV
112177	OHL	DRG	ES	4	2



— 4 - 8, 0KV, asih-df(e)bb 48 smf (aa a20aa 149.20 - 16.1), Ruling Span 276 (m), Catenary 2100 (m) at 15 (deg C) Creep  
— 8 - 9, 0KV, asih-df(e)bb 48 smf (aa a20aa 149.20 - 16.1), Ruling Span 211 (m), Catenary 2100 (m) at 15 (deg C) Creep  
— 4 - 8, 132KV, kingbird\_acsr.wir, Ruling Span 276 (m), Catenary 1800 (m) at 15 (deg C) Creep  
— 8 - 9, 132KV, kingbird\_acsr.wir, Ruling Span 211 (m), Catenary 1800 (m) at 15 (deg C) Creep  
— 9 - 18, 132KV, kingbird\_acsr.wir, Ruling Span 284 (m), Catenary 1800 (m) at 15 (deg C) Creep

- ⊗ Railway Line Crossing
- 🏠 Building
- △ Road Crossing
- ⊕ Railway Line
- ⊗ Telephone Pole
- MV Pole
- Clearance Line
- Servitude Width 31m
- Contour Line
- Farm boundary
- Bird Diverters



**aurecon**  
CAPE TOWN

1 Century City Drive, Waterford Precinct, Century City 7441 Tel: +27 526 9400  
P O Box 494, Cape Town, South Africa Fax: +27 526 9500  
Email: capetown@aurecongroup.com

**aurecon**  
Issued for Construction  
Fayaz Ali Sattar (Pr Eng 20110103)  
Date: 15 Nov 2019

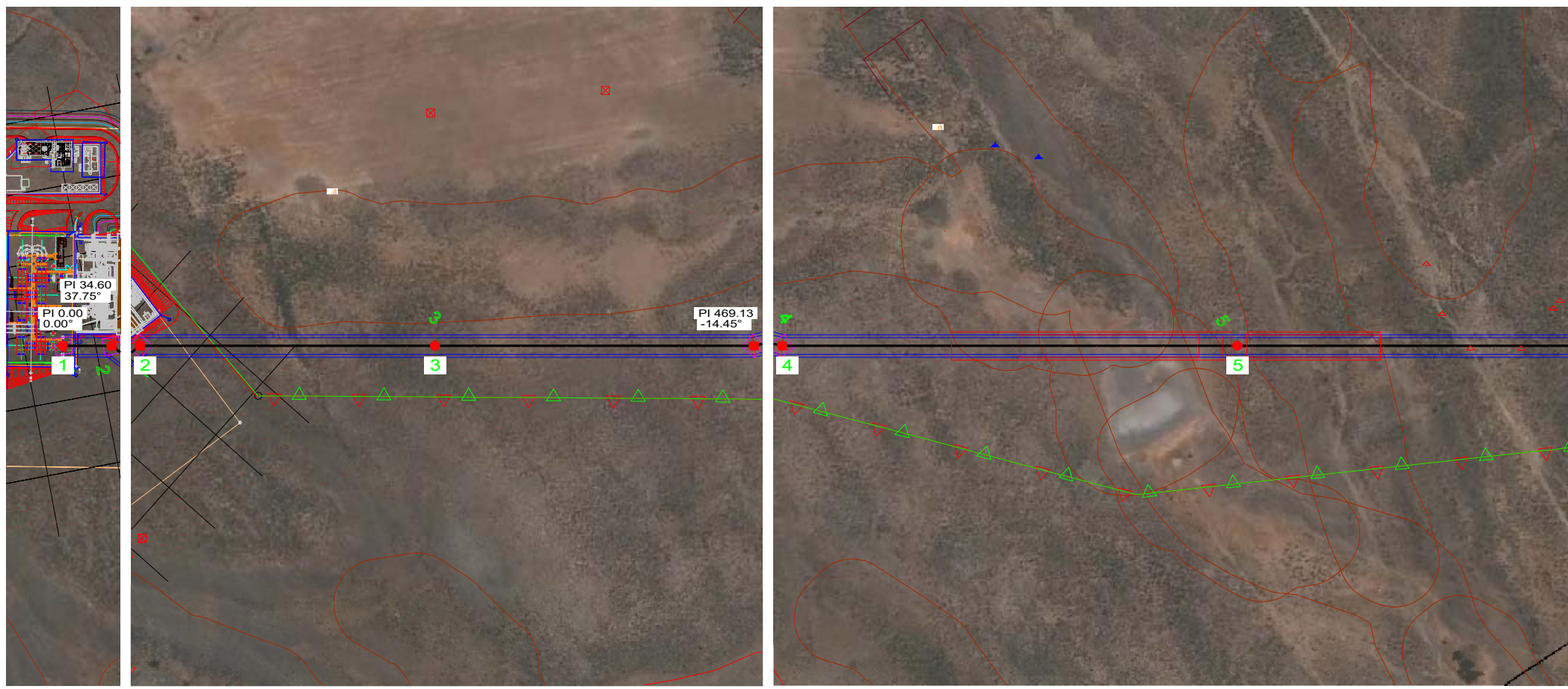
REV	DATE	REVISION DETAILS	APPROVED
0	12/06/19	ISSUED FOR COMMENT	F ALI SATTAR
1	9/10/19	BIRD DIVERTERS ADDED	F A SATTAR
2	15/11/19	ISSUED FOR CONSTRUCTION	F A SATTAR

SCALE	AS SHOWN	SIZE	A3	FOR COMMENT
DRAWN	PLS CADD	DESIGNED	T MATIZA	APPROVED
CHECKED	F SATTAR			FA SATTAR
				DATE
				15 NOV 2019

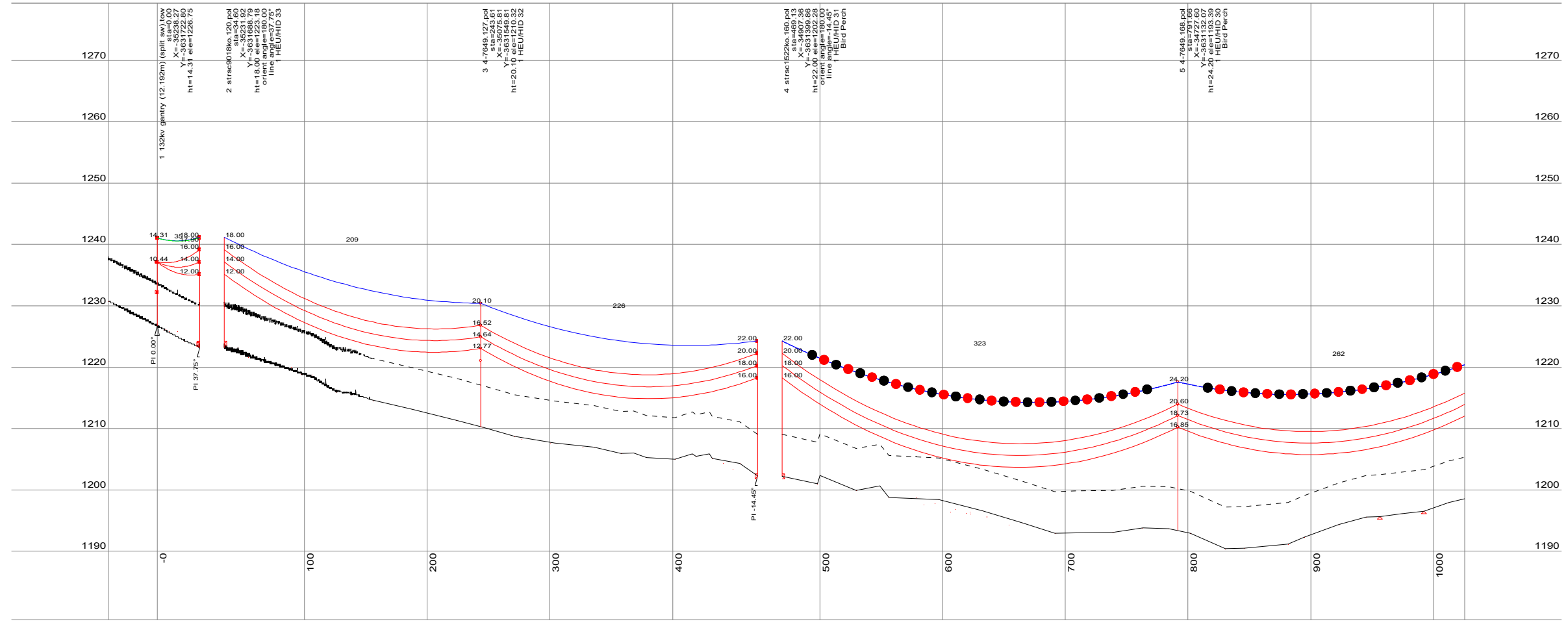
PROJECT  
132KV  
HIDDEN VALLEY - HEUWELS  
OVERHEAD POWER LINE

TITLE  
TEMPLATED PROFILE  
SHEET 3 OF 8

DRAWING NUMBER					
PROJECT No.	WBS	TYPE	DISC	NUMBER	REV
112177	OHL	DRG	ES	3	2



2-4, 0KV, asih-df(e)bb 48 smf (aa a20aa 149 20 - 16.1), Ruling Span 218 (m), Catenary 2100 (m) at 15 (deg C) Creep  
 4-8, 0KV, asih-df(e)bb 48 smf (aa a20aa 149 20 - 16.1), Ruling Span 276 (m), Catenary 2100 (m) at 15 (deg C) Creep  
 1-2, 0KV, asih-df(e)bb 48 smf (aa a20aa 149 20 - 16.1), Ruling Span 206 (m), Catenary 300 (m) at 15 (deg C) Creep  
 1-2, 0KV, asih-df(e)bb 48 smf (aa a20aa 149 20 - 16.1), Ruling Span 35 (m), Catenary 300 (m) at 15 (deg C) Creep  
 1-2, 132KV, kingbird acsr.wir, Ruling Span 35 (m), Catenary 300 (m) at 15 (deg C) Creep  
 2-4, 132KV, kingbird acsr.wir, Ruling Span 218 (m), Catenary 1800 (m) at 15 (deg C) Creep  
 4-8, 132KV, kingbird\_acsr.wir, Ruling Span 276 (m), Catenary 1800 (m) at 15 (deg C) Creep



PLS-CADD Drawing

- ⊗ Railway Line Crossing
- 🏠 Building
- △ Road Crossing
- ⊕ Railway Line
- ⊗ Telephone Pole
- MV Pole
- Clearance Line
- Servitude Width 31m
- Contour Line
- Farm boundary
- Bird Diverters

40.0 m Horiz. Scale  
 8.0 m Vert. Scale

**aurecon**  
 CAPE TOWN

1 Century City Drive, Waterford Precinct, Century City 7441  
 P O Box 494, Cape Town, South Africa  
 Email : capetown@aurecongroup.com

Tel: +27 526 9400  
 Fax : +27 526 9500

CLIENT

**aurecon**  
 Issued for Construction  
 Fayaaz Ali Sattar (Pr Eng 20110103)

Date: 15 Nov 2019

REV	DATE	REVISION DETAILS	APPROVED
0	12/06/19	ISSUED FOR COMMENT	F ALI SATTAR
1	9/10/19	BIRD DIVERTERS ADDED	F A SATTAR
2	15/11/19	ISSUED FOR CONSTRUCTION	F A SATTAR

SCALE	SIZE	FOR COMMENT
AS SHOWN	A3	FOR COMMENT

DRAWN	APPROVED	DATE
PLS CADD	FA SATTAR	15 NOV 2019

PROJECT

132KV  
 HIDDEN VALLEY - HEUWELS  
 OVERHEAD POWER LINE

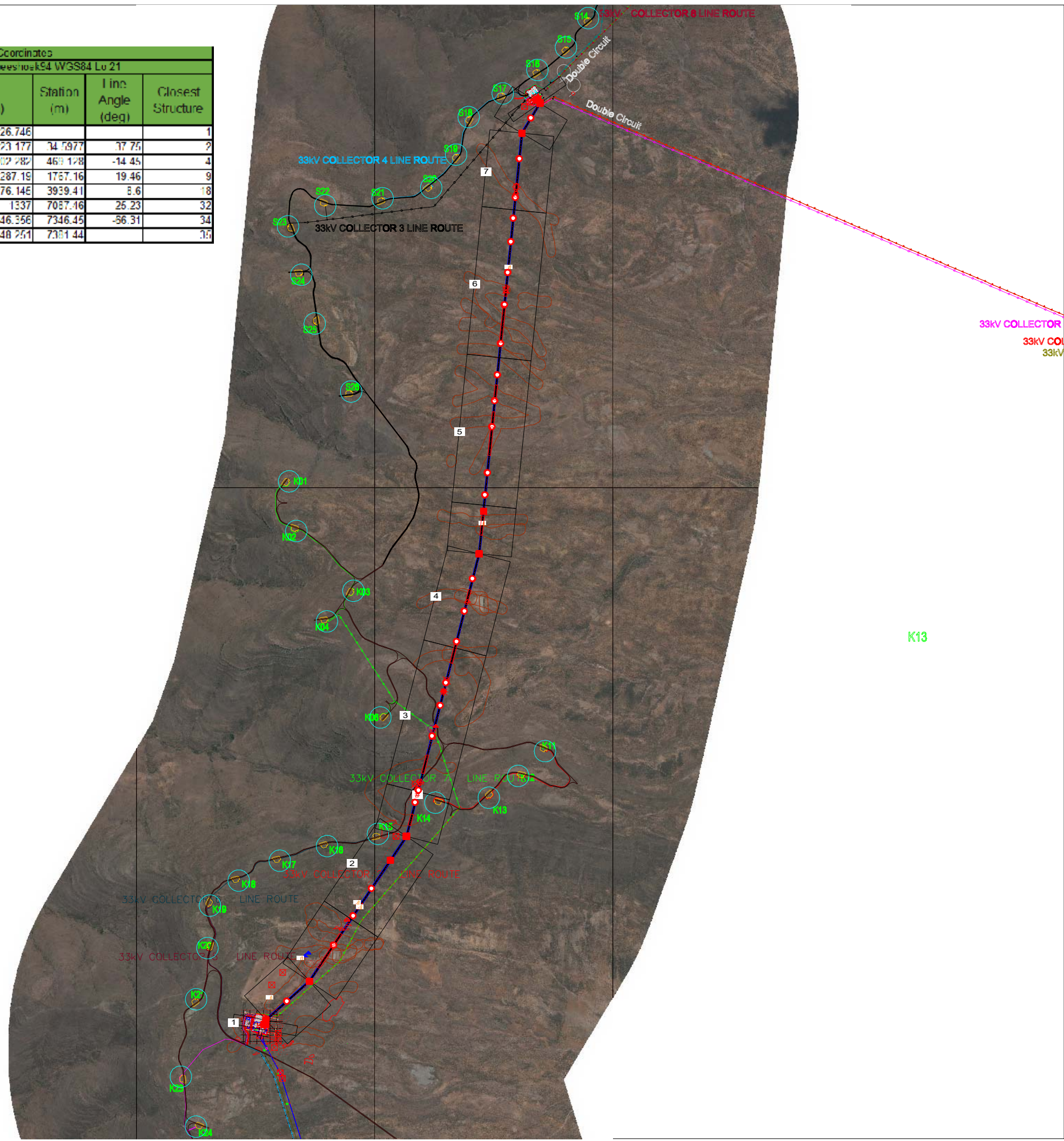
TITLE

TEMPLATED PROFILE  
 SHEET 2 OF 8

DRAWING NUMBER					
PROJECT No.	WBS	TYPE	DISC	NUMBER	REV
112177	OHL	DRG	ES	2	2



Bend Point Coordinates						
Coordinate System: Fatalebeshoek94 WGS84 Lu 21						
Bend	X (m)	Y (m)	Z (m)	Station (m)	Line Angle (deg)	Closest Structure
1	-35238.27	-3631722.3	1226.746			1
2	-35231.92	-3631603.73	1223.177	34.5977	17.75	2
3	-34907.363	-3631399.862	1202.282	463.128	-14.45	4
4	-34183.894	-3630322.145	1287.19	1767.16	19.46	9
5	-33643.213	-3628218.261	1276.145	3939.41	8.6	18
6	-33321.605	-3626086.377	1337	7087.46	25.23	32
7	-33191.05	-3624864.27	1346.356	7346.45	-56.31	34
8	-33211.27	-3624075.9	1348.251	7381.44		35



- ⊗ Railway Line Crossing
- 🏠 Building
- △ Road Crossing
- ⊕ Railway Line
- ⊗ Telephone Pole
- MV Pole
- Clearance Line
- Servitude Width 31m
- Contour Line
- Farm boundary
- Bird Diverters

**aurecon**  
CAPE TOWN

1 Century City Drive, Waterford Precinct,  
Century City 7441  
P O Box 494, Cape Town, South Africa  
Email : capetown@aurecongroup.com

Tel: +27 526 9400  
Fax : +27 526 9500

**aurecon**  
Issued for Construction  
Fayaz Ali Sattar (Pr Eng 20110103)

Date: 15 Nov 2019

REV	DATE	REVISION DETAILS	APPROVED
0	12/06/19	ISSUED FOR COMMENT	F ALI SATTAR
1	9/10/19	BIRD DIVERTERS ADDED	F A SATTAR
2	15/11/19	ISSUED FOR CONSTRUCTION	F A SATTAR

SCALE	SIZE
AS SHOWN	A3

DRAWN	APPROVED	DATE
PLS CADD	FA SATTAR	15 NOV 2019
DESIGNED		
T MATIZA		
CHECKED		
F SATTAR		

PROJECT  
132KV  
HIDDEN VALLEY - HEUWELS  
OVERHEAD POWER LINE

TITLE  
TEMPLATED PROFILE  
SHEET 1 OF 8  
Route Index Map

DRAWING NUMBER						
PROJECT No.	WBS	TYPE	DISC	NUMBER	REV	
112177	OHL	DRG	ES		1	2