

Appendix A

Proposed construction of two 132kV transmission lines from the South & North Wind Energy Facilities on the Eastern Plateau (De Aar 2) near De Aar, Northern Cape - Impact Assessment of the Corridor Alternative B

During the field assessments conducted by the avifaunal specialist for the Environmental Impact Assessment it became apparent that the Alternative Alignment A as assessed in the Heritage Impact Assessment was not viable due to the presence of wetlands and nesting localities, as indicated in **Figure 1** below.

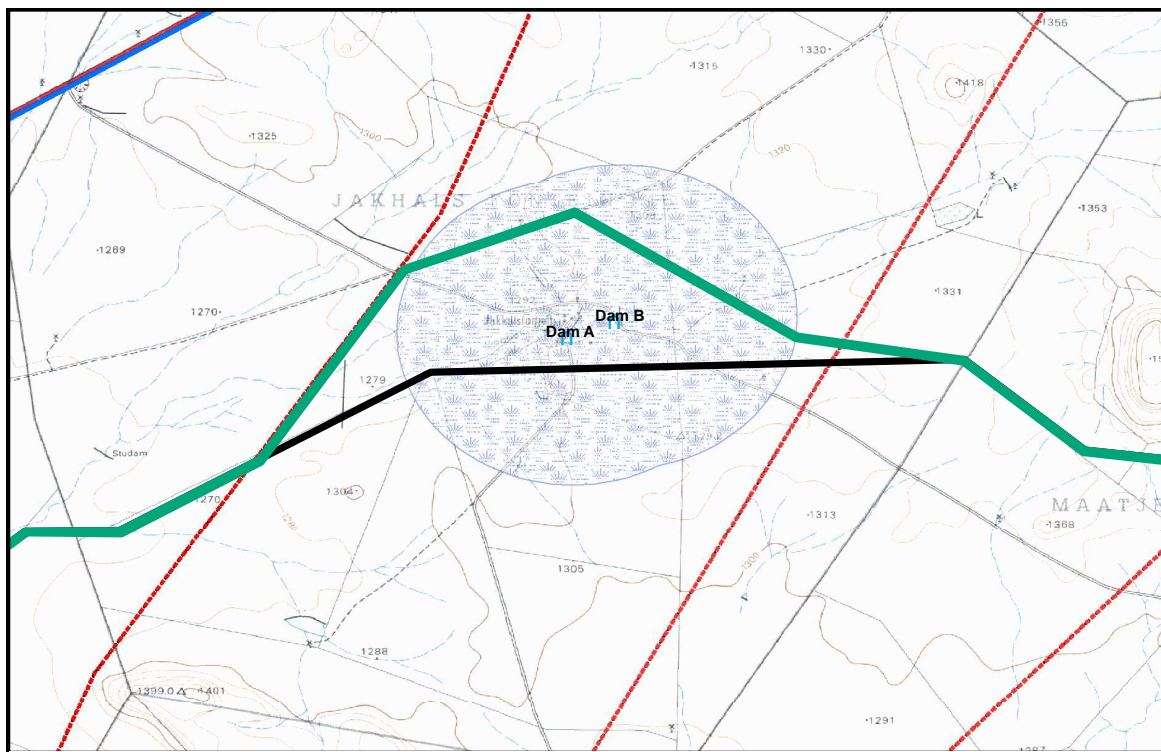


Figure 1: Areas identified as environmentally sensitive (Dam A and B and surrounding wetland)

Due to these constraints an environmentally preferred alternative was selected based on the specialist studies and feedback received from the client. The recommended corridor alternative is indicated in **Figure 2** below.

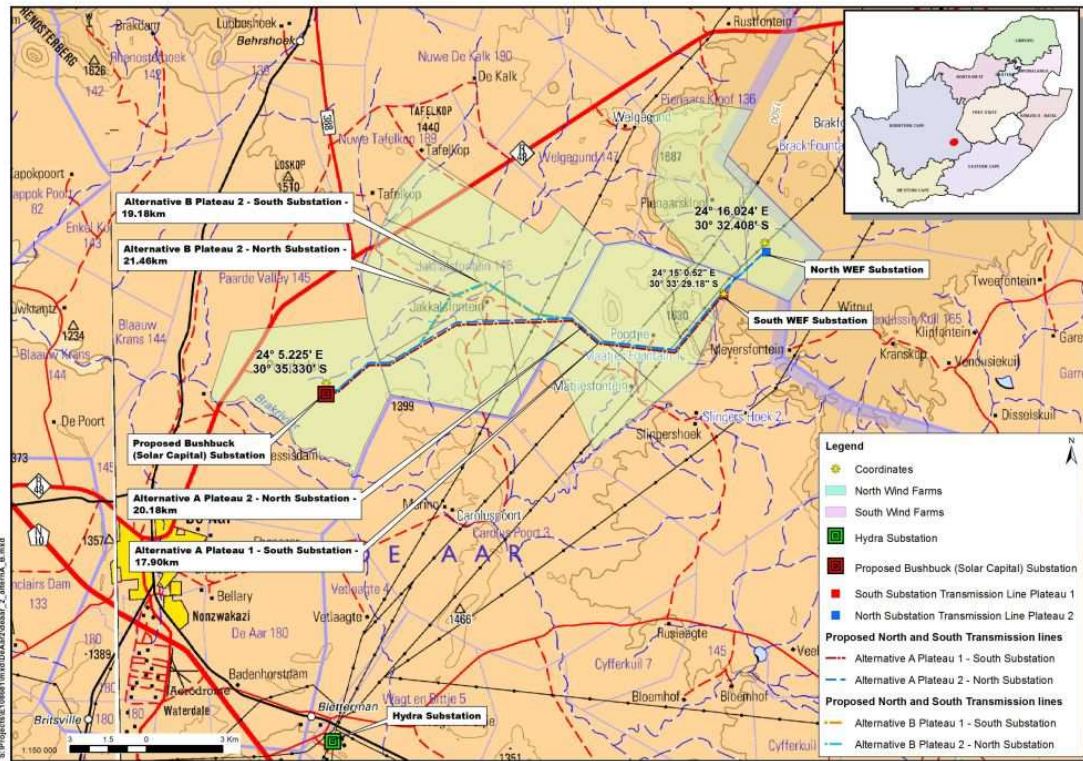


Figure 2: Corridor alternatives A and B

In order to address any additional heritage issues that may result from the Alternative Alignment B, all specialists were requested to assess the proposed extension area, and propose additional mitigation measures, if required. The additional impacts on heritage resources, over and above those mentioned in the Heritage Impact Assessment Report, that are anticipated, as a result of the proposed Alternative provided in the table below.

The desktop evaluation has indicated that although the Alternative Alignment B traverses some drainage areas, which may be associated with archaeological material, this alignment will have a low negative impact as appose to the moderate negative impact on the cultural landscape of the Alternative Alignment A that will pass closer to the Jakkalsfontein farmstead than Alternative Alignment B.

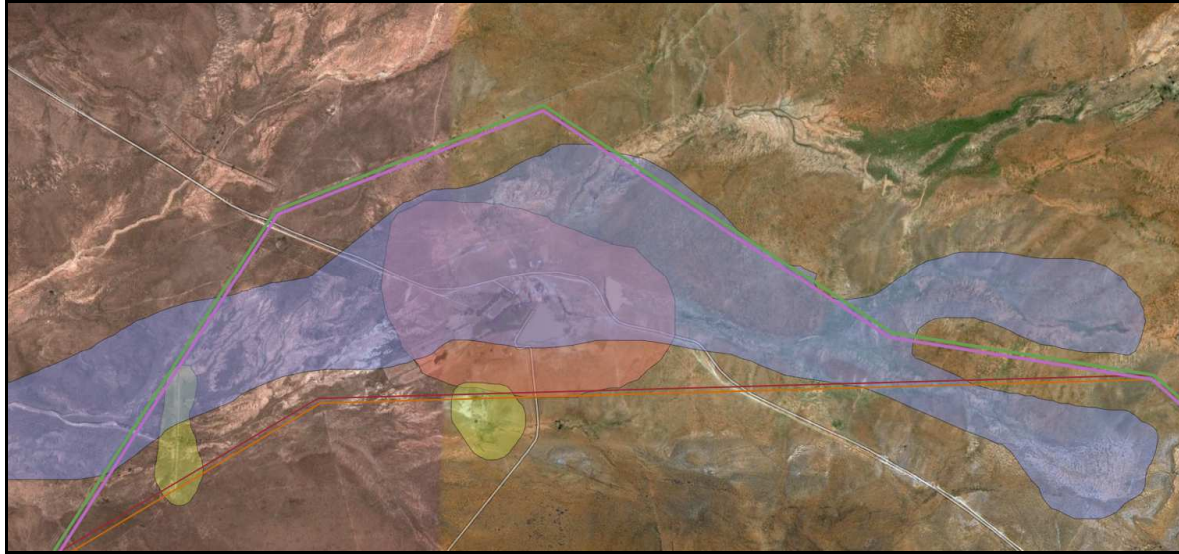


Figure 3: Corridor alternatives A and B with possible heritage sensitive areas (homestead – orange, drainage lines – blue, yellow – structures)

Table 1: Additional Heritage Impacts and Recommendations

Additional Impacts	Additional Mitigation Measures
<p>Discovery of previously unidentified heritage sites (archaeological, historical or grave sites) during construction</p>	<p>Walkdown of the proposed alternative alignment before construction commence but after final design of alignment. The aim is to identify all heritage resources and implement the relevant mitigation measures.</p> <p>The desktop evaluation indicates the same type of terrain and sensitive areas as assessed for Alternative Alignment A (Figure 3), and as such similar heritage resources can be expected and mitigation of such resources identified during the proposed walk down through buffering and moving of pylons will be possible.</p>